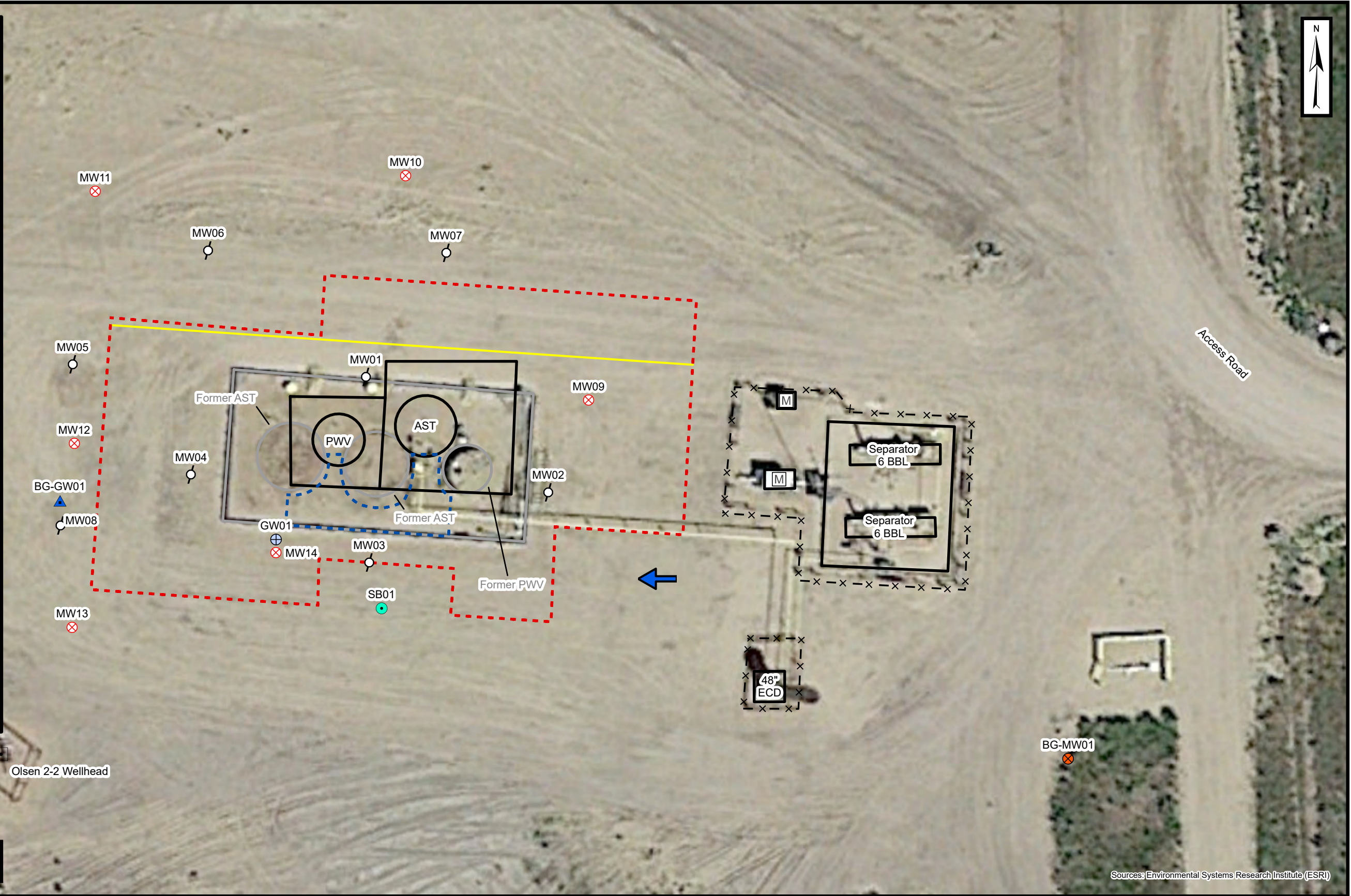
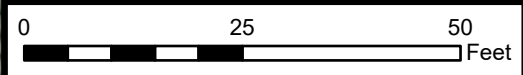


Legend

- Wellhead
- Active Groundwater Monitoring Well
- Abandoned Groundwater Monitoring Well
- Background Groundwater Monitoring Well
- Groundwater Sample Location
- Background Groundwater Sample Location
- Soil Boring Location
- Former Sales Line
- Former Berm
- Metal Berm
- Fence
- Infrastructure
- Former Infrastructure
- Meter House
- Excavation Extent (2021)
- Excavation Extent (2013)
- Surveyed Groundwater Flow Direction

Notes
BBL: Barrel
AST: Above Ground Storage Tank
PWV: Produced Water Vessel
ECD: Emission Control Device



Sources: Environmental Systems Research Institute (ESRI)



Site Map
Clack 1-2A, Olsen 2-2
Kerr-McGee Oil & Gas Onshore, LP
NWNE SEC 2-T3N-R67W
Weld County, CO
Project Number: 09A1662021

FIGURE
1