

Inspection Photos
Operator: Omimex Petroleum Inc (66190)
Lease: Bledsoe 6-2-5-45
Facility ID/API, 289934 / 05-125-10794



1. No Lease sign on location

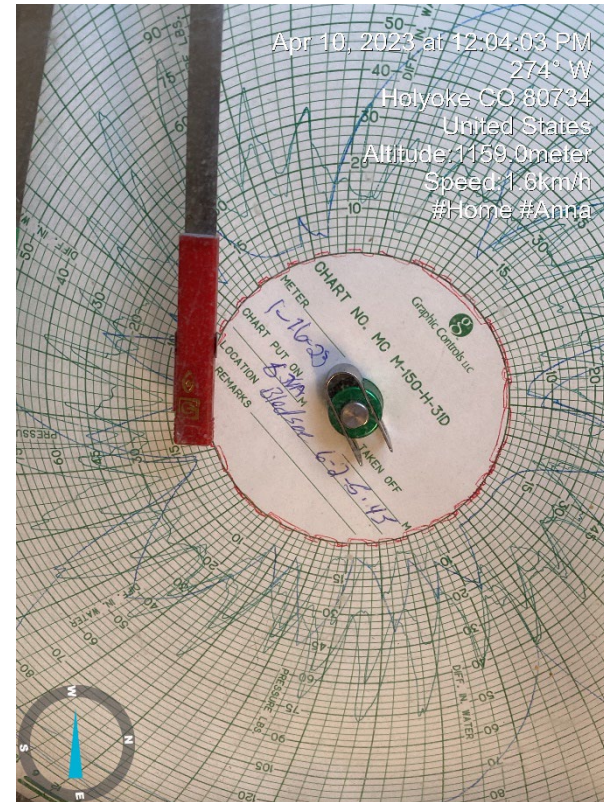


2. Wellhead

Inspection Photos
Operator: Omimex Petroleum Inc (66190)
Lease: Bledsoe 6-2-5-45
Facility ID/API, 289934 / 05-125-10794



3. VGS and meter run in meter shed



4. Chart was last changed on 1/16/2023