

Inspection Photos

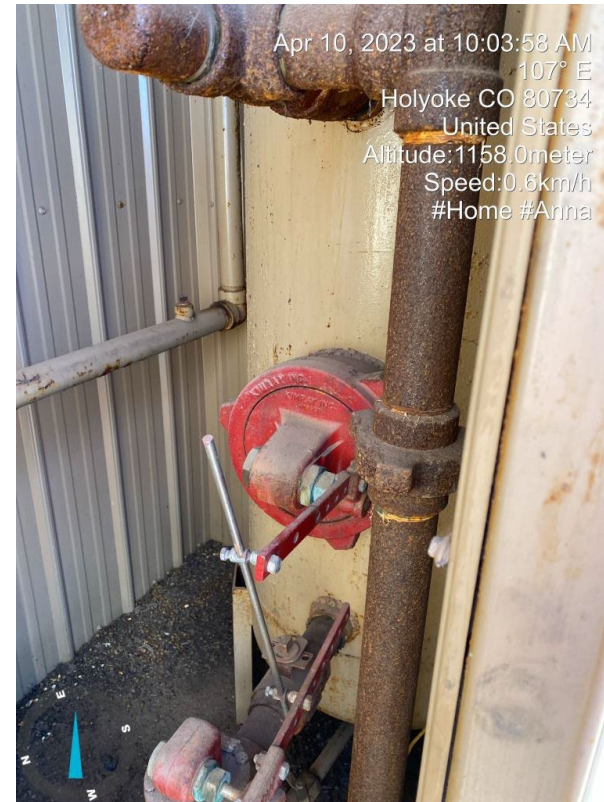
Operator: Omimex Petroleum Inc (66190)

Lease: Sagehorn 14-34-6-45

Facility ID/API, 440196 / 05-095-06469



1. Lease sign on Meter shed

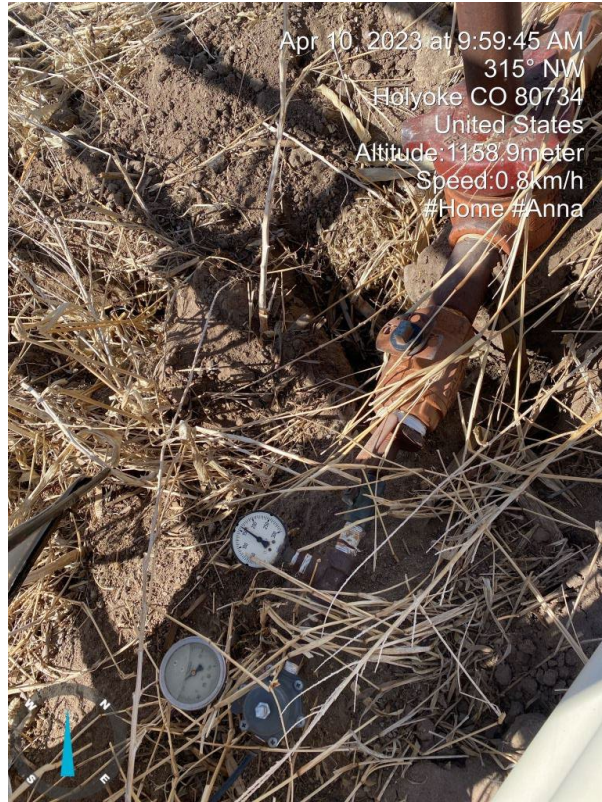


2. Inside Meter shed, Vertical gas separator

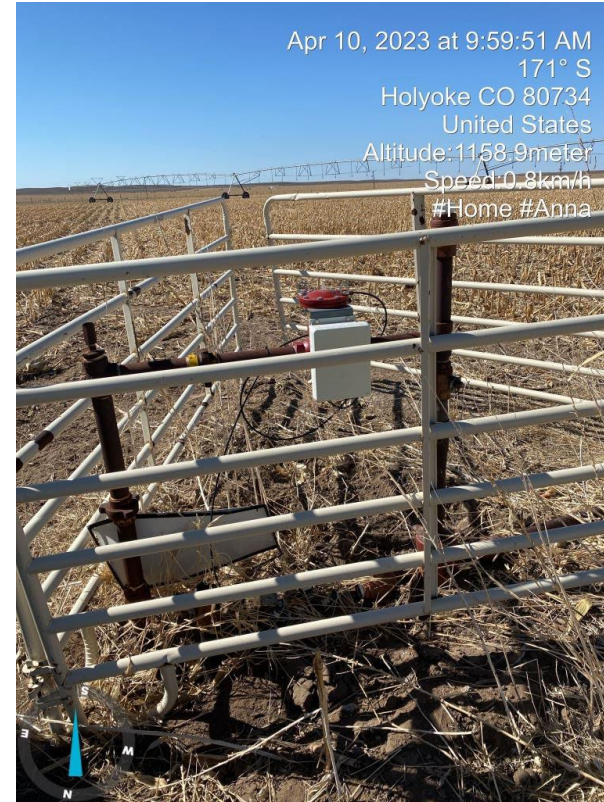


COLORADO
Oil & Gas Conservation
Commission
Department of Natural Resources

Inspection Photos
Operator: Omimex Petroleum Inc (66190)
Lease: Sagehorn 14-34-6-45
Facility ID/API, 440196 / 05-095-06469



3. Wellhead



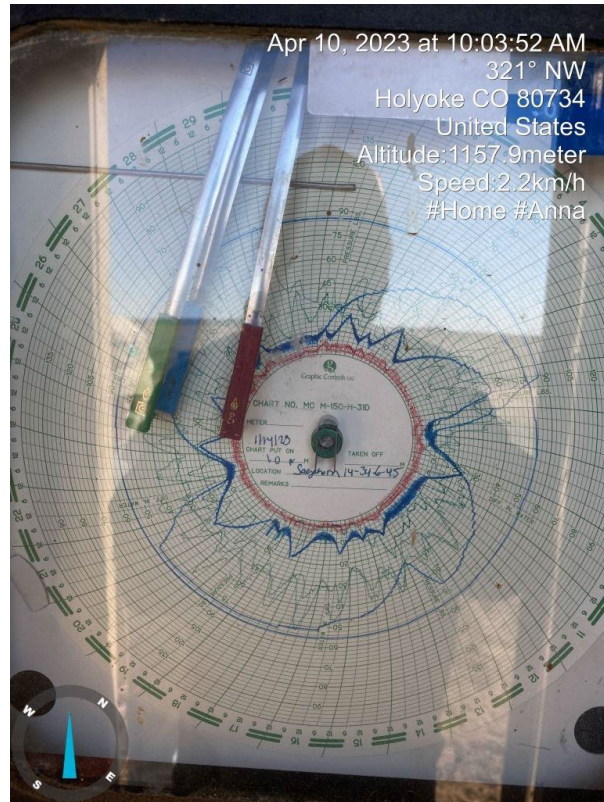
4. Wellhead

Inspection Photos

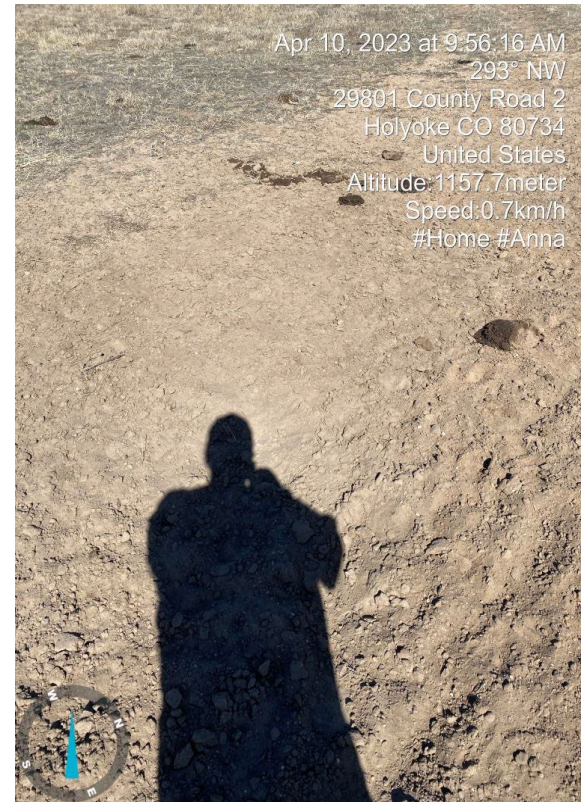
Operator: Omimex Petroleum Inc (66190)

Lease: Sagehorn 14-34-6-45

Facility ID/API, 440196 / 05-095-06469



5. Meter, Chart has not been changed since January 2023
Well is producing.



6. Road going into location, no tracks



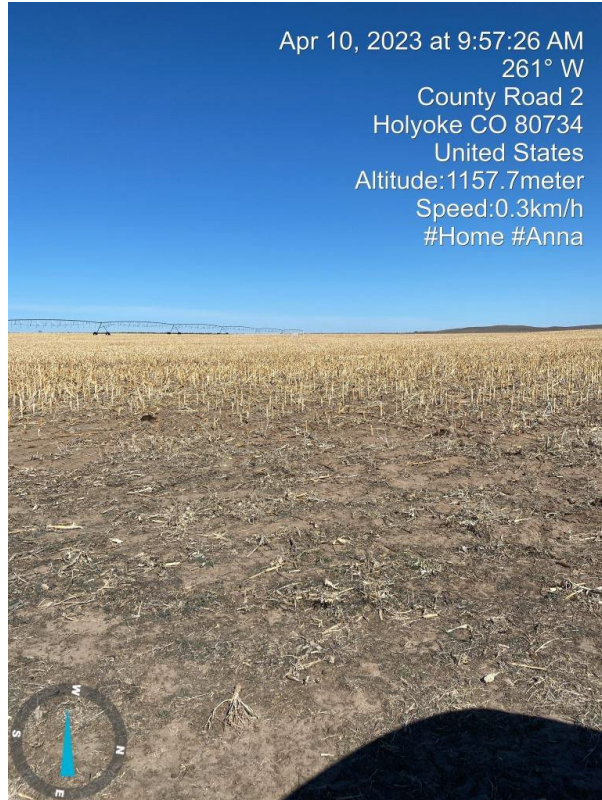
COLORADO
Oil & Gas Conservation
Commission
Department of Natural Resources

Inspection Photos

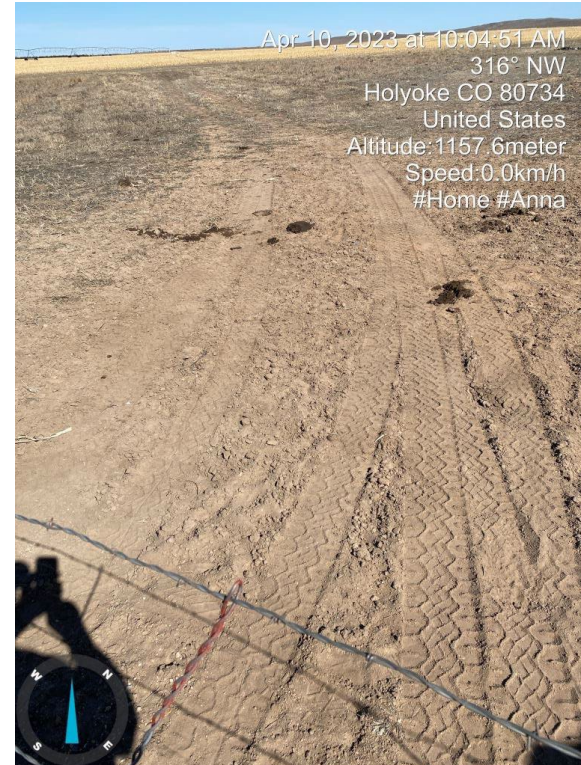
Operator: Omimex Petroleum Inc (66190)

Lease: Sagehorn 14-34-6-45

Facility ID/API, 440196 / 05-095-06469



7. Well out in crop circle, No tracks.



8. Road going into and out of location showing inspectors tracks.



COLORADO
Oil & Gas Conservation
Commission
Department of Natural Resources