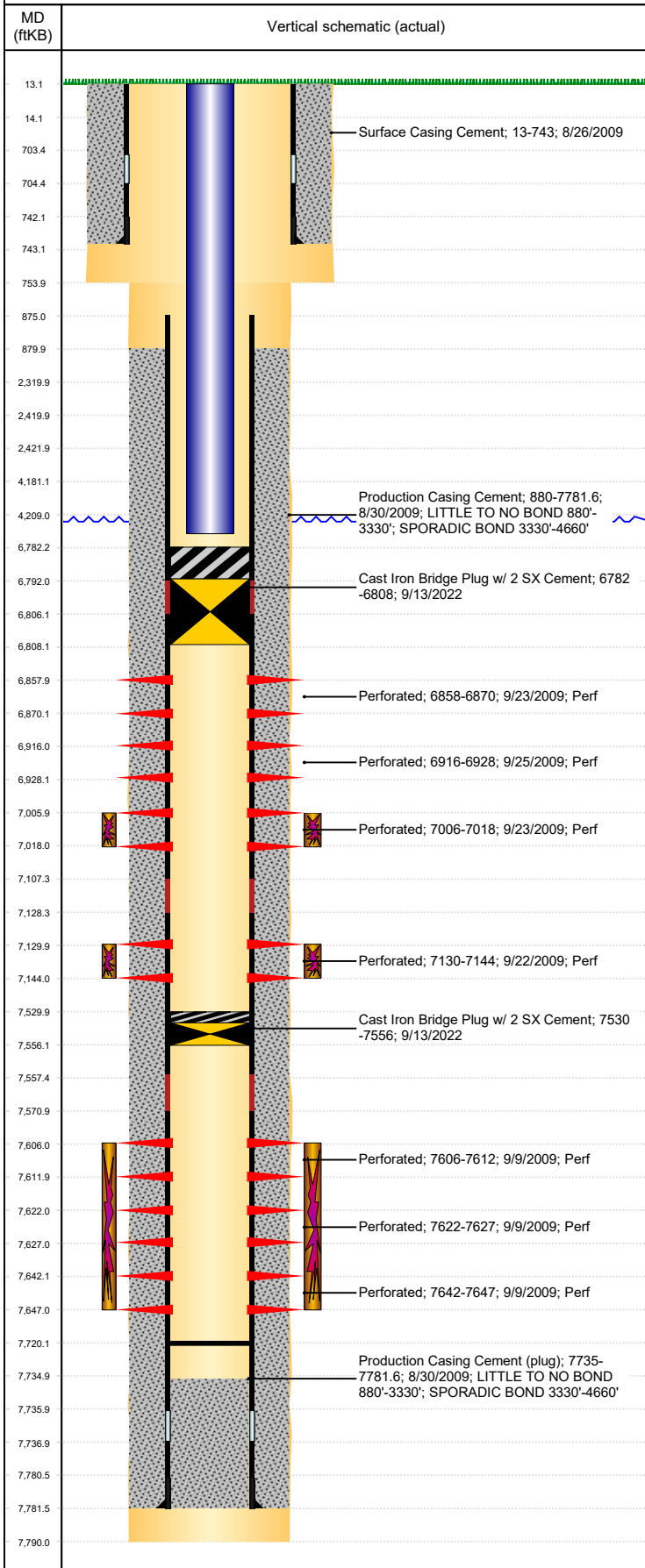




P&A Wellbore For State

Well Name: STROH H12-20

Land, Original Hole, 3/15/2023 11:35:00 AM



Well Header									
Surface UWI 0512330487		Business Unit Rockies			Gov Auth Dist		Prod Tree Loc Land		
Orig. KB to Gnd (ft) 13.00		Original Spud Date 8/26/2009		Abandon Date		Well Sub-Status PR			High... N
Comment LAST TAG @ 6775' VERY STICKY. WIRELINE TOOLS STUCK DWN HOLE: 1' CABLE HEAD 1 11/16" OD, 10' SINKER BARS 3 1/8",OD, 2' CCL 3 1/8" OD, 6' BAKER SETTING TOOL 3" OD.									
Surface Location (Congressional)									
Qtr 3 SE	Qtr 4 NW	Section 12	Twnshp 3	Twنش... N	Range 65	Rng E/... W	Latitude (°) 40.24046978 6	Longitude (°) -104.615621202	
Wellbore Sections									
Section Des		Hole Size (in)			Act Top (ftKB)		Act Btm (ftKB)		
SURFACE		12 1/4			13.0		754.0		
PRODUCTION		7 7/8			754.0		7,790.0		
Casing Strings									
Csg Des		Run Date	OD (in)	Wt/Len (lb/ft)	Grade	Top Depth (MD) (ftKB)	Set Depth (MD) (ftKB)		
Surface		8/26/2009	8 5/8	24.00	J-55	13	743		
Production Casing		8/29/2009	4 1/2	11.60	PS-80	13.1	7781.6		
Cement									
Des			Start Date		Top (ftKB)		Btm (ftKB)		
Surface Casing Cement			8/26/2009		13.0		743.0		
Production Casing Cement			8/30/2009		880.0		7,781.6		
Zone Statuses									
Zone Name	Status Date	Status	Fluid Type	Job			Prod Method		
NIOBRARA	9/30/2009	PR		DRILLING/COMPLETION - ORIGINAL, 8/26/2009...					
J SAND	9/30/2009	PR		DRILLING/COMPLETION - ORIGINAL, 8/26/2009...					
CODELL	9/30/2009	PR		DRILLING/COMPLETION - ORIGINAL, 8/26/2009...					
Perforation Data									
Linked Zone		Explosive Type	Entered Shot Total	Top (ftKB)		Btm (ftKB)		Date	
NIOBRARA, Original Hole		A	24	6,858.0		6,870.0		9/23/2009	
NIOBRARA, Original Hole		B	24	6,916.0		6,928.0		9/25/2009	
NIOBRARA, Original Hole		C	24	7,006.0		7,018.0		9/23/2009	
CODELL, Original Hole			56	7,130.0		7,144.0		9/22/2009	
J SAND, Original Hole			24	7,606.0		7,612.0		9/9/2009	
J SAND, Original Hole			20	7,622.0		7,627.0		9/9/2009	
J SAND, Original Hole			20	7,642.0		7,647.0		9/9/2009	
Stimulation Intervals									
Zone			Start Date		Top (ftKB)		Btm (ftKB)		
NIOBRARA, Original Hole			9/23/2009		7,006.0		7,018.0		
CODELL, Original Hole			9/23/2009		7,130.0		7,144.0		
J SAND, Original Hole			9/21/2009		7,606.0		7,647.0		
Other In Hole									
Run Date	Des		Make		OD (in)	Top (ftKB)	Btm (ftKB)		
9/13/2022	Cast Iron Bridge Plug w/ 2 SX Cement				4	6,782.0	6,808.0		
9/13/2022	Cast Iron Bridge Plug w/ 2 SX Cement				4	7,530.0	7,556.0		
Logs									
Date	Type					Depth Top (MD) (ftKB)		Btm (ftKB)	
8/29/2009	SPECTRAL DENSITY/Pe/DSN NEUTRON/SP/ARRAY COMPENSATED TRUE RESISTIVITY/6 ARM CALIPER					3,800		7,796.0	
8/29/2009	SPECTRAL GAMMA RAY					6,150		7,748.0	
9/3/2009	CBL/CCL/GR					770		7,713.0	
Plug Back Total Depths									
Date	Type		Com					PBTD (ftKB)	
10/10/2009	FILL		WIRELINE TOOLS STUCK DWN HOLE: 1' CABLE HEAD 1 11/16"...					6,775	
11/20/2009	PLUG REMNANTS							7,720	