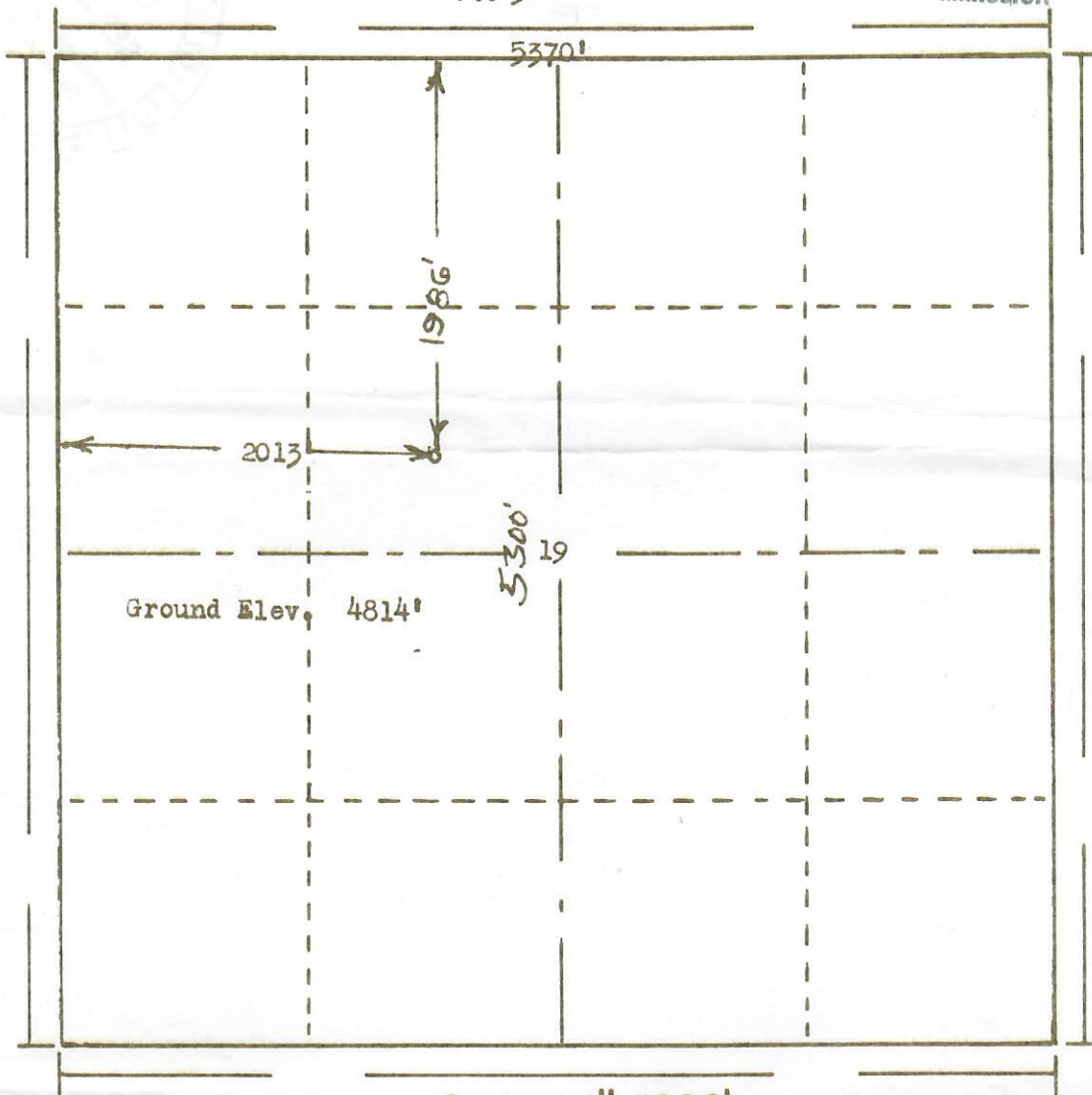




00837619

R. 56W

SEP 30 1965

OIL & GAS
CONSERVATION COMMISSIONT.
3
8

Scale ... 1" = 1000'

Powers Surveyors, Inc. of Denver, Colorado
has in accordance with a request from Mr. Koble
for Arrowhead Exploration Co. determined the
Location of No. 22-19 Schug et al
to be CSE NW Section 19 Township 38
Range 56W of the 6th Principal Meridian
Washington County, Colorado

I hereby certify that this plat is an
accurate representation of a correct
survey showing the location of

Date:

9-22-65

Bill G. Hoo
Licensed Land Surveyor No. 2853
State of Colorado