

Final Reclamation Inspection

October 05, 2022

Operator: NOBLE ENERGY INC- 100322

Location ID: 414489

Inspection Document #: 708000151

Weld County, CO

SWNE Section 11 4N64W 6

Kasen Huwa

Reclamation Contractor, COGCC



COLORADO

**Oil & Gas Conservation
Commission**

Department of Natural Resources

Inspection Photos
Location Name: MILLAGE C 11-18
Location ID: 414489



Photo 1. Google Earth aerial imagery taken 7/2019 during active operations. Photo illustrates the well location (red circle), tank battery (red square), flowline (red line), and well location access road (white arrow).

Inspection Photos
Location Name: MILLAGE C 11-18
Location ID: 414489



Photo 2. COGCC Online Map aerial imagery 2019 with subject well (blue dot), related wells (red dots), tank battery (north center) and flowlines (black lines).

N →



Photo 3. Orthomosaic drone aerial imagery taken from 200 ft (Oct. 2022). Illustrates mature crop growth on and around the well location (red circle) and flowline (red line) through the field. Access road (blue line) is on edge on field/property line. Tank Battery is addressed in Location 305093 report.



Photo 4. Zoomed in Orthomosaic taken from 200 ft (Oct. 2022). Illustrates mature crop growth on and around the well location (red circle).

N →

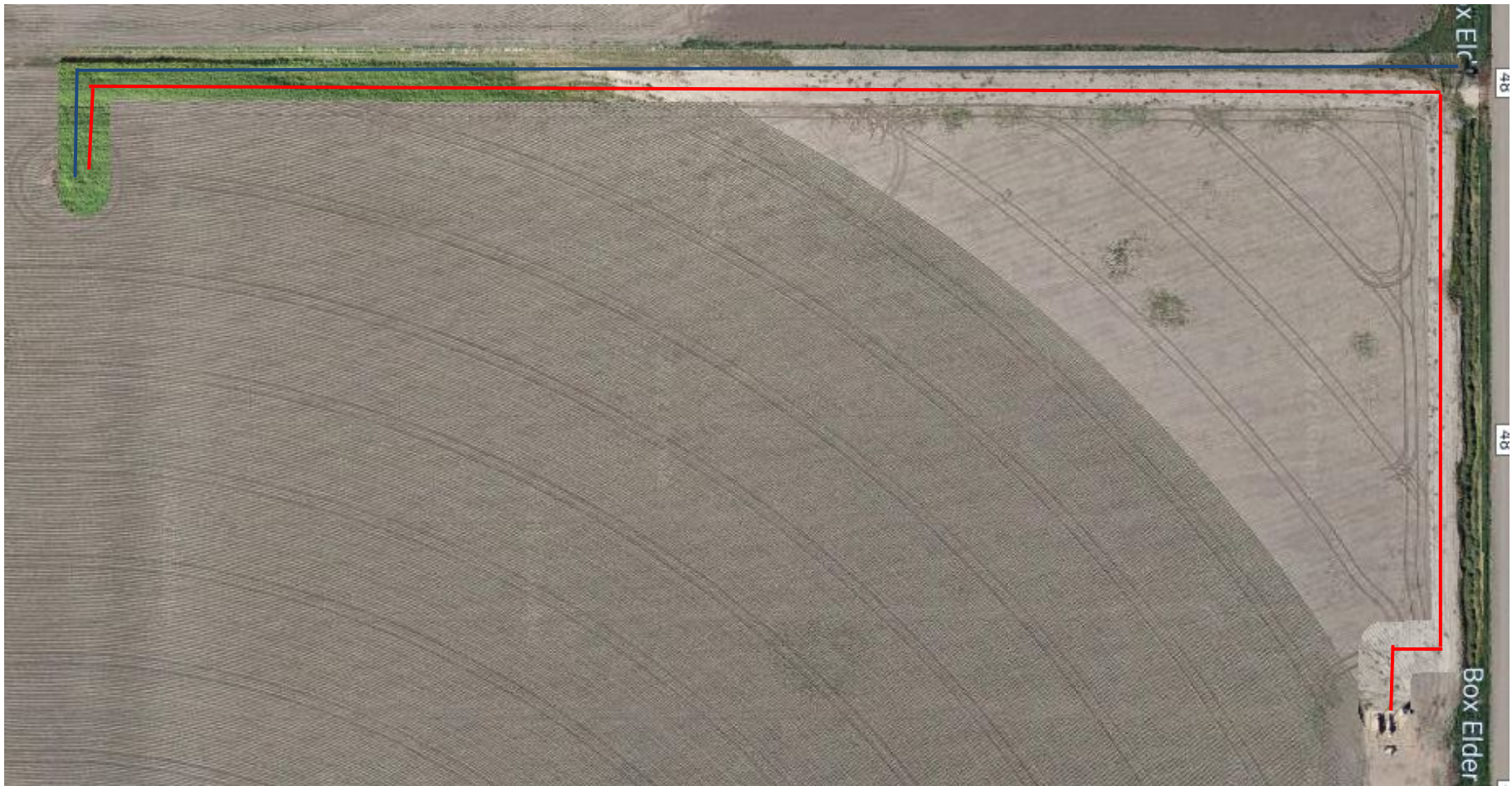


Photo 5. Orthomosaic taken from 200 ft (Oct. 2022). Illustrates mature crop growth on and around the flowline (red line) and access road (blue line) in the field and shows the corridor along the field/property line of access road and flowline.

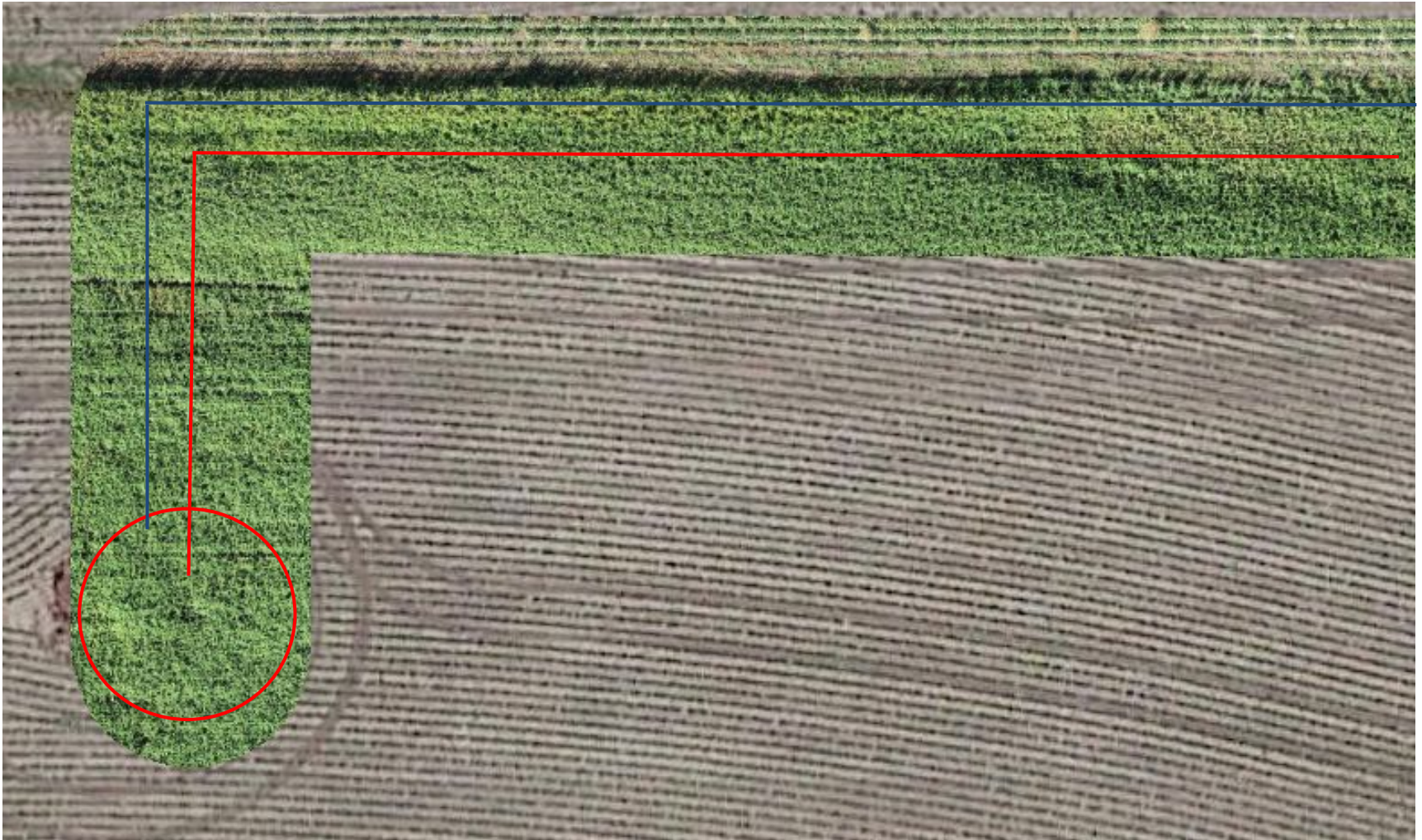


Photo 6. Zoomed in Orthomosaic taken from 200 ft (Oct. 2022). Illustrates mature crop growth on and around the well location (red circle), flowline (red line) and access road in the field (blue line).