

KP Kauffman Company INC, State 32-16
005-06698
Inspection #688313279
10/12/2022
High Priority Inspection



Colorado Oil and Gas Conservation Commission
39.61708, -104.33021, 5564.3ft, 344°
10/12/2022 03:20:39 PM



Colorado Oil and Gas Conservation Commission

39.61707, -104.3302, 5577.4ft, 285

10/12/2022 03:21:06 PM



Access road through
field not
used/maintained.

Colorado Oil and Gas Conservation Commission
39.61707, -104.33021, 5570.9ft, 194°
10/12/2022 03:20:48 PM



Colorado Oil and Gas Conservation Commission
39.61709, -104.33023, 5580.7ft, 339
10/12/2022 03:20:58 PM



State 16-13 PAd on
11/8/2014.

State 16-22 PAd on
5/8/2015.

Can removed wells
from tank battery
sign.

This well is in
Arapahoe County, not
Weld Count as the
sing states.

Colorado Oil and Gas Conservation Commission
39° 6' 15.99", -104° 32' 36.3", 5587.3ft, 356°
10/12/2022 03:10:56 PM



Control
weeds.

Colorado Oil and Gas Conservation Commission

39.616, -104.32362, 5587.3ft, 16°

10/12/2022 03:11:10 PM



Animal
hole in
tank
berms.

Colorado Oil and Gas Conservation Commission
39.616, -104.32362, 5587.3ft, 5°
10/12/2022 03:11:17 PM



Colorado Oil and Gas Conservation Commission
39.616, -104.32371, 5561.0ft, 355°
10/12/2022 03:12:35 PM



Animal
hole in
crude oil
tank
berms.

Colorado Oil and Gas Conservation Commission
39.61604, -104.32367, 5551.2ft, 290°
10/12/2022 03:13:14 PM



Pickup
old sign.

Colorado Oil and Gas Conservation Commission
39.61599, -104.32364, 5574.1ft, 7°
10/12/2022 03:12:53 PM

Crude oil
tank is
leaking.

Colorado Oil and Gas Conservation Commission
39.61604, -104.32367, 5551.2ft, 290°
10/12/2022 03:13:14 PM

Tank
valve is
leaking.



Colorado Oil and Gas Conservation Commission
39.61604, -104.32367, 5534.8ft, 360°
10/12/2022 03:13:22 PM



Separator
and shed
control
weeds.

Colorado Oil and Gas Conservation Commission
39.61599, -104.32362, 5551.2ft, 227°
10/12/2022 03:12:16 PM



Anadarko's gas sales
riser marked in
orange fencing.

Colorado Oil and Gas Conservation Commission
39.61589, -104.32361, 5557.7ft, 252°
10/12/2022 03:14:02 PM



Colorado Oil and Gas Conservation Commission
39.61585, -104.32361, 5557.7ft, 331°
10/12/2022 03:14:18 PM



Colorado Oil and Gas Conservation Commission
39.61582, -104.32365, 5570.9ft, 190°
10/12/2022 03:14:35 PM



State 1-16
injection well
was Pad on
7/22/2020.



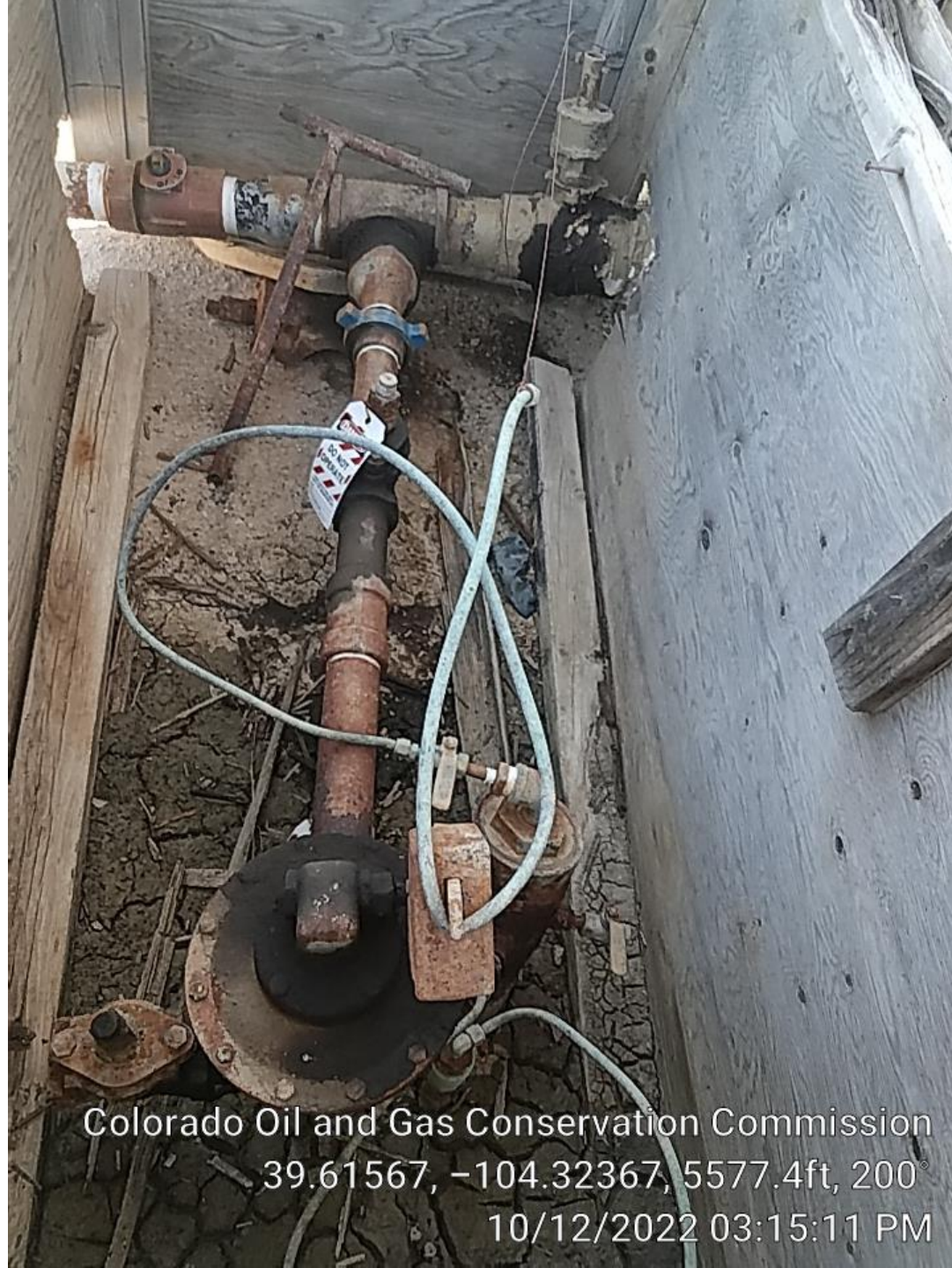
Control weeds.

Colorado Oil and Gas Conservation Commission
39.61582, -104.32365, 5570.9ft, 190°
10/12/2022 03:14:35 PM



Produced
water tank,
maintain
labels.

Colorado Oil and Gas Conservation Commission
39.61568, -104.32365, 5574.1ft, 238°
10/12/2022 03:15:02 PM



Stained soil
inside pump box
on east side of
produced water
tank.

Colorado Oil and Gas Conservation Commission
39.61567, -104.32367, 5577.4ft, 200°
10/12/2022 03:15:11 PM



Colorado Oil and Gas Conservation Commission
39.61556, -104.32364, 5574.1ft, 218°
10/12/2022 03:15:32 PM



Colorado Oil and Gas Conservation Commission
39.61562, -104.32364, 5580.7ft, 233°
10/12/2022 03:15:23 PM



Colorado Oil and Gas Conservation Commission
39.61562, -104.32364, 5580.7ft, 233°
10/12/2022 03:15:23 PM



Colorado Oil and Gas Conservation Commission
39.61556, -104.32364, 5574.1ft, 218°
10/12/2022 03:15:32 PM



Colorado Oil and Gas Conservation Commission
39.61556, -104.32364, 5574.1ft, 218°
10/12/2022 03:15:32 PM



Colorado Oil and Gas Conservation Commission

39.61553, -104.32369, 5567.6ft, 261°

10/12/2022 03:15:43 PM



Colorado Oil and Gas Conservation Commission
39-61553, -104.32369, 5567.6ft, 261
10/12/2022 03:15:43 PM