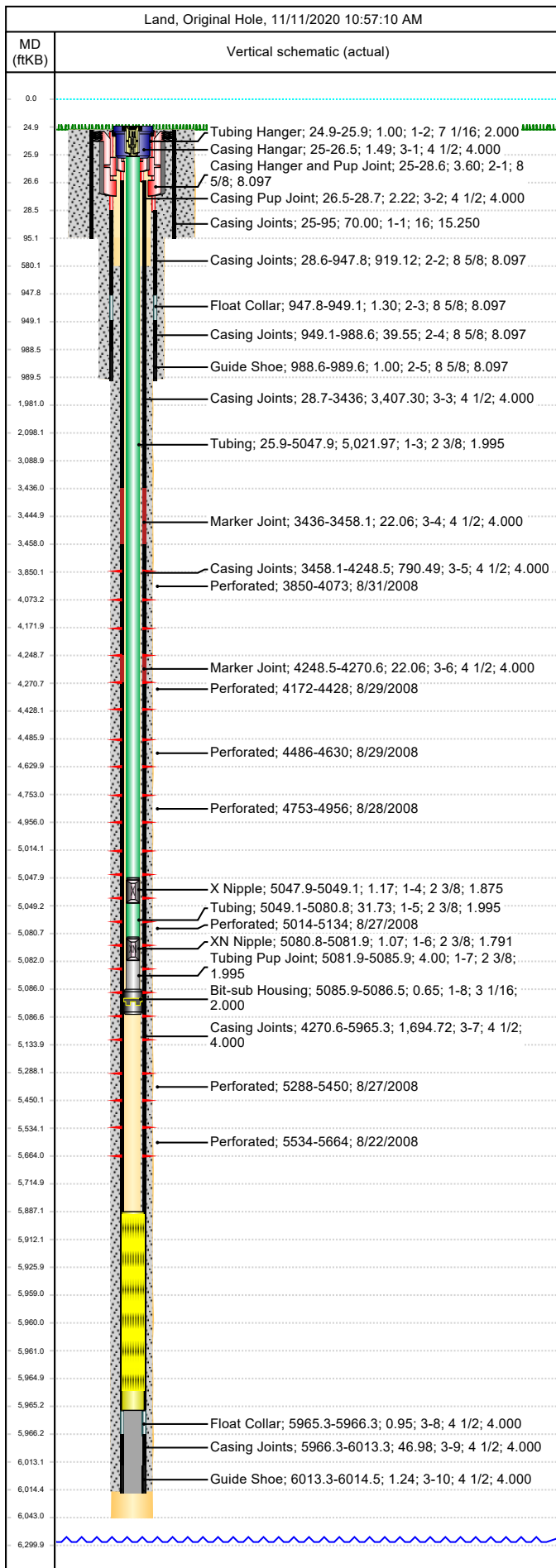




Wellbore Schematic

Well Name SKR-598-35-AV-14	Lease Chevron USA	Field Name Skinner Ridge	Business Unit Mid-Continent
-------------------------------	----------------------	-----------------------------	--------------------------------

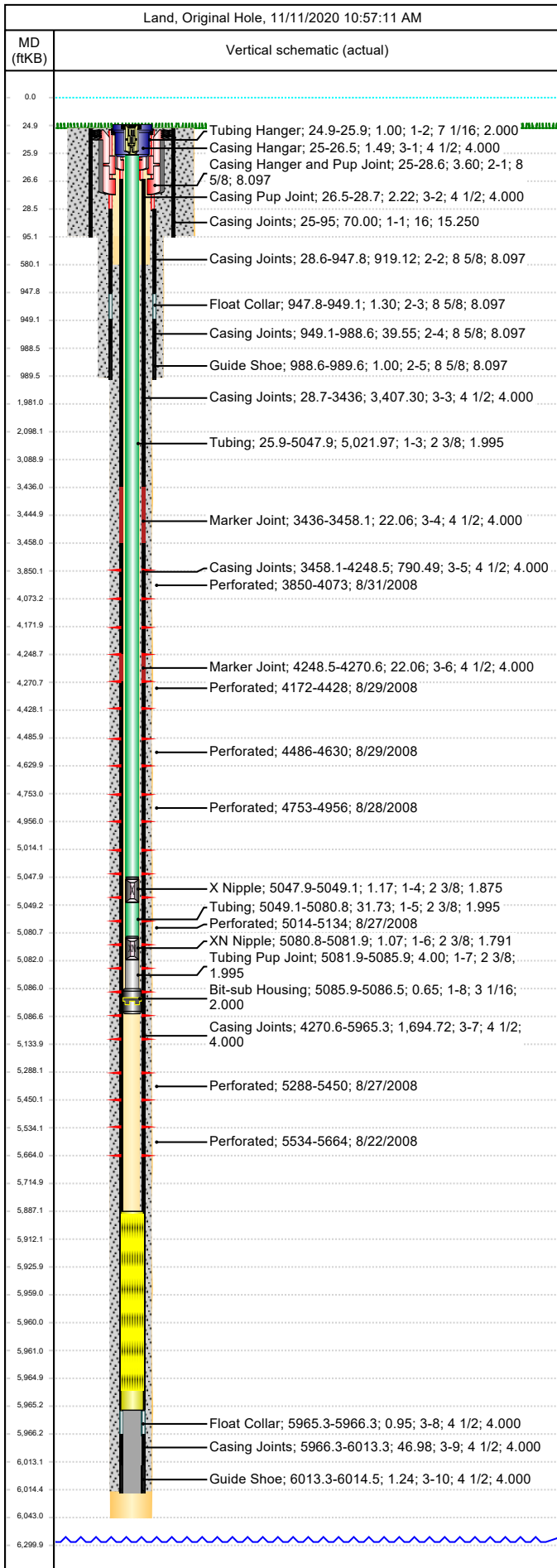


Job Details							
Job Category				Start Date		Rig/Unit End Date	
Well Services				10/22/2013		10/22/2013	
Casing Strings							
Csg Des	OD (in)	Wt/Len (lb/ft)	Grade	Top Thread	Set Depth (MD) (ftKB)		
Conductor	16				95		
Surface	8 5/8	24.00	K-55		989.6		
Production Casing	4 1/2	11.60	N-80	LTC	6014.5		
Tubing Strings							
Tubing - Production set at 5,086.5ftKB on 10/28/2008 12:00							
Tubing Description			Run Date		String Length (ft)		Set Depth (MD) (ftKB)
Tubing - Production			10/28/2008		5,086.59		5,086.5
Item Des		Jts	OD (in)	Wt (lb/ft)	Grade	Len (ft)	Btm (ftKB)
KBGL						25.00	24.9
Tubing Hanger			7 1/16		4140	1.00	25.9
Tubing		159	2 3/8	4.70	L-80	5,021.97	5,047.9
X Nipple			2 3/8			1.17	5,049.1
Tubing		1	2 3/8	4.70	L-80	31.73	5,080.8
XN Nipple			2 3/8			1.07	5,081.9
Tubing Pup Joint			2 3/8	4.70	L-80	4.00	5,085.9
Bit-sub Housing			3 1/16			0.65	5,086.5
Tubing Landed @							5,086.5
Perforations							
Date	Top (ftKB)	Btm (ftKB)	Shot Dens (shots/ft)	Entered Shot Total	Linked Zone		
8/31/2008	3,850.0	4,073.0	3.0	27	Mesa Verde - WMFK - Williams Fork, Original Hole		
8/29/2008	4,172.0	4,428.0	3.0	27	Mesa Verde - WMFK - Williams Fork, Original Hole		
8/29/2008	4,486.0	4,630.0	3.0	30	Mesa Verde - WMFK - Williams Fork, Original Hole		
8/28/2008	4,753.0	4,956.0	3.0	24	Mesa Verde - WMFK - Williams Fork, Original Hole		
8/27/2008	5,014.0	5,134.0	3.0	15	Mesa Verde - WMFK - Cameo, Original Hole		
8/27/2008	5,288.0	5,450.0	3.0	24	Mesa Verde - WMFK - Cameo, Original Hole		
8/22/2008	5,534.0	5,664.0	3.0	21	Mesa Verde - WMFK - Cameo, Original Hole		
Other Strings							
Run Date	Pull Date	Set Depth (ftKB)	Com				
Other In Hole							
Des	Top (ftKB)	Btm (ftKB)	Run Date	Pull Date	Com		
Composite solid BP	3,820.0	3,822.0	8/31/2008	10/23/2008	Bear Claw, Solid 10K BP		
Composite flow thru BP	4,093.0	4,095.0	8/31/2008	10/23/2008	Bear Claw, Flow thru 10K BP		
Composite flow thru BP	4,448.0	4,450.0	8/29/2008	10/24/2008	Bear Claw, Flow thru 10K BP		
Composite flow thru BP	4,650.0	4,652.0	8/29/2008	10/24/2008	Bear Claw, Flow thru 10K BP		
Composite flow thru BP	4,986.0	4,988.0	8/28/2008	10/24/2008	Bear Claw, Flow thru 10K BP		
Tubing Plunger	5,045.8	5,046.8	2/10/2010	10/22/2013			
Bumper Spring	5,046.8	5,047.8	2/10/2010	10/22/2013			
Composite solid BP	5,154.0	5,156.0	8/27/2008	10/27/2008	Halco Fasdril, 8K BP Solid		
Composite solid BP	5,470.0	5,472.0	8/27/2008	10/27/2008	Halco Fasdril, 8K BP Solid		
Fill, 10/22/2013	5,887.0	5,926.0	10/22/2013		Tag w/ slickline 10/22/2013 (39 ft more fill from 2/10/2010) PLS pulled Plunger & Spring (Assembly not re-installed while D&C was on location)		



Wellbore Schematic

Well Name SKR-598-35-AV-14	Lease Chevron USA	Field Name Skinner Ridge	Business Unit Mid-Continent
-------------------------------	----------------------	-----------------------------	--------------------------------



Other In Hole					
Des	Top (ftKB)	Btm (ftKB)	Run Date	Pull Date	Com
Fill (Sand / Mud / Debris)	5,887.0	5,965.0	9/8/2020		Spot in PLS Slick line Unit, RUOW. Fished plunger and Bumper spring. Ran Static Pressure Survey from X nipple @ 5049'. Ran 1.625" Blind Box/TFF @ 5887'. Dropped new Bumper Spring and Plunger, Chased down to the X nipple.
Fill, 2/10/2010	5,926.0	5,965.0	2/10/2010		Tag w/ slick-line, 2/10/10
Pumped off	5,959.2	5,960.0	10/28/2008		Pumped Off Bit-sub
Mill	5,960.0	5,961.0	10/28/2008		
Fill, 10/28/2008	5,961.0	5,965.3	10/28/2008		Sand Fill
PBTD	5,965.3	6,014.5	10/31/2007		PBTD