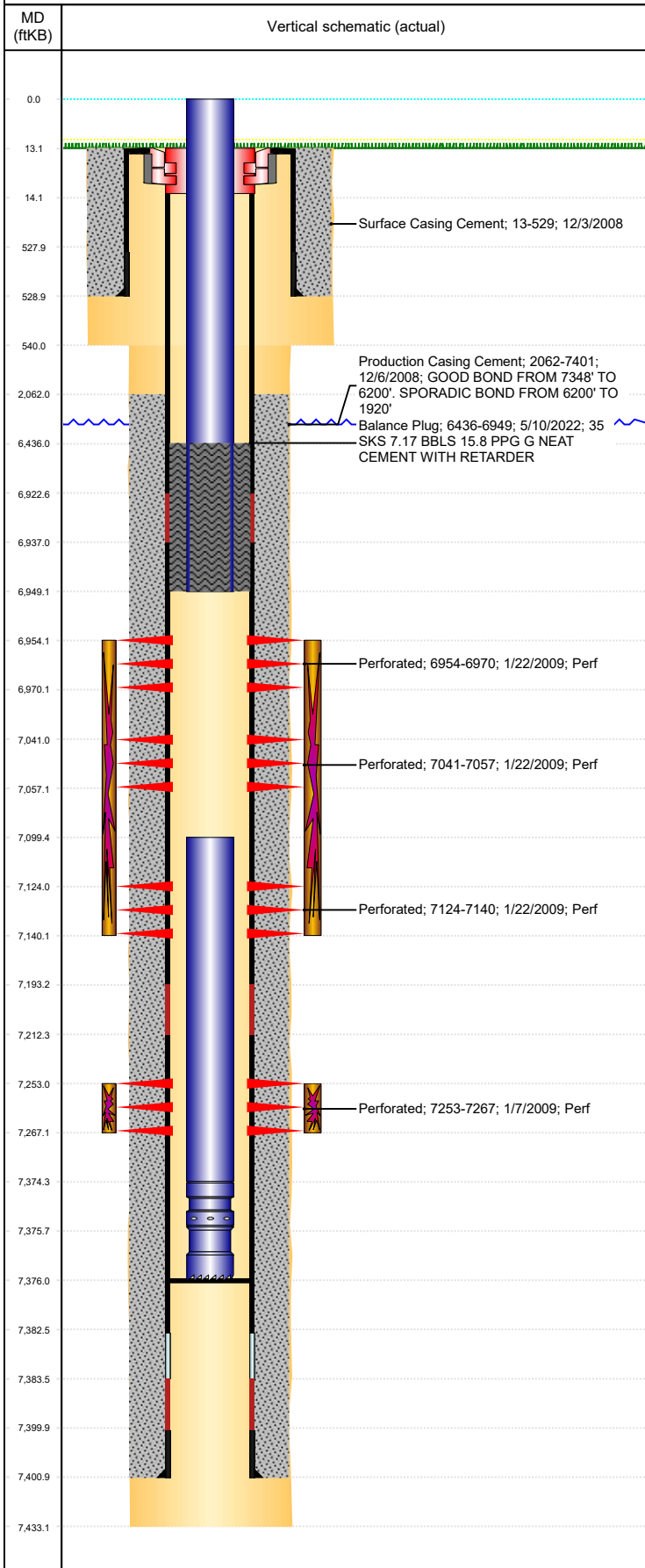




# P&A Wellbore For State

Well Name: KISSLER K21-25

Land, Original Hole, 6/3/2022 3:15:10 PM



Well Header									
Surface UWI 0512326957			Business Unit Rockies			Gov Auth Dist		Prod Tree Loc Land	
Orig. KB to Gnd (ft) 13.00		Original Spud Date 12/3/2008		Abandon Date		Well Sub-Status TA			High... N
Comment FIELD OPS NOTICE- FLOWLINES ABANDONED PER RULE 1103, RCVD 6/29/17 & 9/1/17.									
Surface Location (Congressional)									
Qtr 3 SE	Qtr 4 SW	Section 21	Twnshp 4	Twnsh... N	Range 66	Rng E/... W	Latitude (°) 40.29335039 1	Longitude (°) -104.786776443	
Wellbore Sections									
Section Des			Hole Size (in)			Act Top (ftKB)		Act Btm (ftKB)	
SURFACE			12 1/4			13.0		540.0	
PRODUCTION			7 7/8			540.0		7,433.0	
Casing Strings									
Csg Des			Run Date		OD (in)	Wt/Len (lb/ft)	Grade	Top Depth (MD) (ftKB)	Set Depth (MD) (ftKB)
Surface			12/3/2008		8 5/8	24.00	J-55	13	529
Production Casing			12/6/2008		4 1/2	11.60	M-80	13	7401
Cement									
Des					Start Date		Top (ftKB)		Btm (ftKB)
Surface Casing Cement					12/3/2008		13.0		529.0
Production Casing Cement					12/6/2008		2,062.0		7,401.0
Balance Plug					5/10/2022		6,436.0		6,949.0
Zone Statuses									
Zone Name		Status Date	Status	Fluid Type	Job			Prod Method	
NIOBRARA		1/23/2009	PR		DRILLING/COMPLETION - ORIGINAL, 12/3/2008...			Flowing	
NIOBRARA		5/10/2022	TA		SET CEMENT PLUG, 5/9/2022 00:00			Flowing	
CODELL		1/23/2009	PR		DRILLING/COMPLETION - ORIGINAL, 12/3/2008...			Flowing	
CODELL		5/10/2022	TA		SET CEMENT PLUG, 5/9/2022 00:00			Flowing	
Perforation Data									
Linked Zone			Explosive Type	Entered Shot Total	Top (ftKB)		Btm (ftKB)		Date
NIOBRARA, Original Hole			A	32	6,954.0		6,970.0		1/22/2009
NIOBRARA, Original Hole			B	32	7,041.0		7,057.0		1/22/2009
NIOBRARA, Original Hole			C	32	7,124.0		7,140.0		1/22/2009
CODELL, Original Hole				56	7,253.0		7,267.0		1/7/2009
Stimulation Intervals									
Zone				Start Date		Top (ftKB)		Btm (ftKB)	
NIOBRARA, Original Hole				1/22/2009		6,954.0		7,140.0	
CODELL, Original Hole				1/22/2009		7,253.0		7,267.0	
Other In Hole									
Run Date		Des			Make		OD (in)	Top (ftKB)	Btm (ftKB)
Logs									
Date		Type					Depth Top (MD) (ftKB)		Btm (ftKB)
12/6/2008		Caliper/Comp. Density/Neutron/GR/SP/ML					2,440		7,433.0
12/6/2008		DIL/GR/SP/Caliper					529		7,433.0
12/23/2008		CBL/CCL/GR					1,800		7,348.0
Plug Back Total Depths									
Date		Type			Com				PBTD (ftKB)
12/23/2008		FILL			DEPTH LOGGER ON CBL				7,355
3/6/2009		PLUG REMNANTS			109' OF RATHOLE.				7,376