



---

# **Terra Energy Partners, LLC**

## **SURFACE POST JOB REPORT**

**FEDERAL RWF 443-9 05-045-24394**  
**S:9 T:6S R:94W Garfield CO**

CallSheet #: 79881  
Proposal #: 57115



**SURFACE Post Job Report**

**Attention:** Dustin Childers | (936) 524-8828 | dchilders@terraep.com  
Terra Energy Partners, LLC  
4828 Loop Central Dr., Suite 900 | Houston, TX 77081

---

Dear Dustin Childers,

Thank you for the opportunity to provide cementing services on this well. American Cementing strives to achieve complete customer satisfaction. If you have any questions regarding the services or data provided, please contact American Cementing at any time.

Sincerely,

**Michael Harold**

Field Engineer II | (970) 773-3636 | michael.harold@americacementing.com

**Field Office**      28730 US-6, Rifle, CO 81650  
Phone: (970) 657-1157

## Job Details & Summary

### Geometry

Type	Function	OD (in)	ID (in)	Weight (lb/ft)	Thread	Top (ft)	Bottom (ft)	Excess (%)
Open Hole	Outer	n/a	13.5	n/a	n/a	0	500	16
Open Hole	Outer	n/a	13.5	n/a	n/a	500	1128	16
Casing	Inner	9.625	8.921	36	n/a	0	1121.29	0

### Equipment / People

Unit Type	Unit	Power Unit	Employee #1
Cement Trailer	CTF-242	TRC(TRB)-195	Martin, Chuck
Light Duty Vehicles	LDV-063		Castillo, Francisco
Cement Pump	CPF-058	TRH-855	McNeal, Lawrence

### Timing

Event	Date/Time
Call Out	1/15/2022 15:00
Depart Facility	1/15/2022 17:30
On Location	1/15/2022 18:00
Rig Up Iron	1/15/2022 18:30
Job Started	1/15/2022 21:38
Job Completed	1/15/2022 22:20
Rig Down Iron	1/15/2022 22:30
Depart Location	1/15/2022 23:45

### General Job Information

Metrics	Value
Well Fluid Density	9.1 lb/gal
Well Fluid Type	WBM
Rig Circulation Vol	300 bbls
Rig Circulation Time	0.5 hours
Calculated Displacement	83 bbls
Actual Displacement	83 bbls
Total Spacer to Surface	20 bbls
Total CMT to Surface	18 bbls
Well Topped Out	No

### Job Details

Metrics	Value
Flare Prior to Job	No
Flare Prior to Job	0 units
Flare During Job	No
Flare During Job	0 units
Flare at End of Job	No
Flare at End of Job	0 units
Well Full Prior to Job	Yes
Well Fluid Density Into Well	9.1 lb/gal
Well Fluid Density Out of Well	9.1 lb/gal

### Job Details (cont.)

Metrics	Value
BHCT	80 °F
BHST	97 °F

### Water Analysis

Metrics	Value	Recommended
Water Source	Upright Rig Tank	
Temperature	55 °F	50-80 °F
pH Level	6	5.5-8.5
Chlorides	0 mg/L	0-3000 mg/L
Total Alkalinity	240	0-1000
Total Hardness	250 mg/L	0-500 mg/L
Carbonates	0 mg/L	0-100 mg/L
Sulfates	200 mg/L	0-1500 mg/L
Potassium	250 mg/L	0-3000 mg/L
Iron	0 mg/L	0-300 mg/L

### Circulation

Lost Circulation Experienced	Losses into Spacer	Losses into Cement	Losses into Displacement
No			

## Job Execution Information

Fluid	Product	Function	Density (lb/gal)	Yield (ft <sup>3</sup> /sk)	Water Rq. (gal/sk)	Water Rq. (gal/bbl)	Volume (sks)	Volume (bbl)	Designed Top (ft)
1	Water	Flush	8.34			42.00		20.00	0
2	Lead Cement	Lead	12.30	2.34	13.42		122.00	50.81	0
3	Tail Cement	Tail	12.80	2.08	11.46		174.00	64.35	500
4	Water	DisplacementFinal	8.34			42.00		83.00	0

## Job Fluid Details

Fluid	Type	Fluid	Product	Function	Conc.	Uom
2	Lead	Lead Cement	ASTM TYPE I/II	Cement	100.00	%
2	Lead	Lead Cement	A-10	Accelerator	5.00	%BWOB
2	Lead	Lead Cement	A-2	Accelerator	2.00	lb/sk
2	Lead	Lead Cement	A-7P	Accelerator	2.00	lb/sk
2	Lead	Lead Cement	FP-24	Defoamer	0.30	%BWOB
2	Lead	Lead Cement	IntegraSeal POLI	LostCirculation	0.25	lb/sk
2	Lead	Lead Cement	STATIC FREE	Other	0.01	lb/sk
3	Tail	Tail Cement	ASTM TYPE I/II	Cement	100.00	%
3	Tail	Tail Cement	A-10	Accelerator	5.00	%BWOB
3	Tail	Tail Cement	A-2	Accelerator	2.00	lb/sk
3	Tail	Tail Cement	A-7P	Accelerator	2.00	lb/sk
3	Tail	Tail Cement	FP-24	Defoamer	0.30	%BWOB
3	Tail	Tail Cement	IntegraSeal POLI	LostCirculation	0.25	lb/sk
3	Tail	Tail Cement	STATIC FREE	Other	0.01	lb/sk

## Job Logs

Line	Event	Date (MM/DD/YY)	Time (HH:MM)	Density (lb/gal)	Pump Rate (bpm)	Pump Volume (bbls)	Pipe Pressure (psi)	Comment
1	CALLOUT	1/15/2022	15:00					ON LOCATION AT 18:00 HRS
2	LEAVE YARD	1/15/2022	17:30					CREW LEAVE THE YARD
3	ON LOCATION	1/15/2022	18:00					CREW ON LOCATION
4	RIG UP	1/15/2022	18:30					RIG UP MEETING, RIG UP
5	SAFETY MEETING	1/15/2022	21:00					PRE-JOB SAFETY MEETING
6	PRESSURE TEST	1/15/2021	21:35				3829	PRESSURE TEST LINES
7	PUMP SPACER	1/15/2022	21:38	8.34	4.5	20	345	WATER SPACER
8	LEAD CEMENT	1/15/2022	21:43	12.3	6	51	433	LEAD 122 SKS/51 BBLs AT 12.3 PPG
9	TAIL CEMENT	1/15/2022	21:52	12.8	6	64	463	TAIL 174 SKS/64 BBLs AT 12.8 PPG, TOP OF TAIL 420'
10	SHUTDOWN	1/15/2022	21:55					SHUTDOWN, DROP PLUG
11	DISPLACEMENT	1/15/2022	21:56	8.34	10	73	1107	DISPLACEMENT WATER
12	SLOW RATE	1/15/2022	22:14	8.34	3	10	380	SLOW RATE
13	LAND PLUG	1/15/2022	22:17				997	LAND PLUG, 18 BBLs CMT TO SURFACE
14	CHECK FLOATS	1/15/2022	22:20					FLOATS HELD, 0.5 BBL FLOW BACK
15	RIG DOWN	1/15/2022	22:30					RIG DOWN MEETING, RIG DOWN
16	LEAVE LOCATION	1/15/2022	23:45					CREW LEAVE LOCATION

## Pump Diagrams

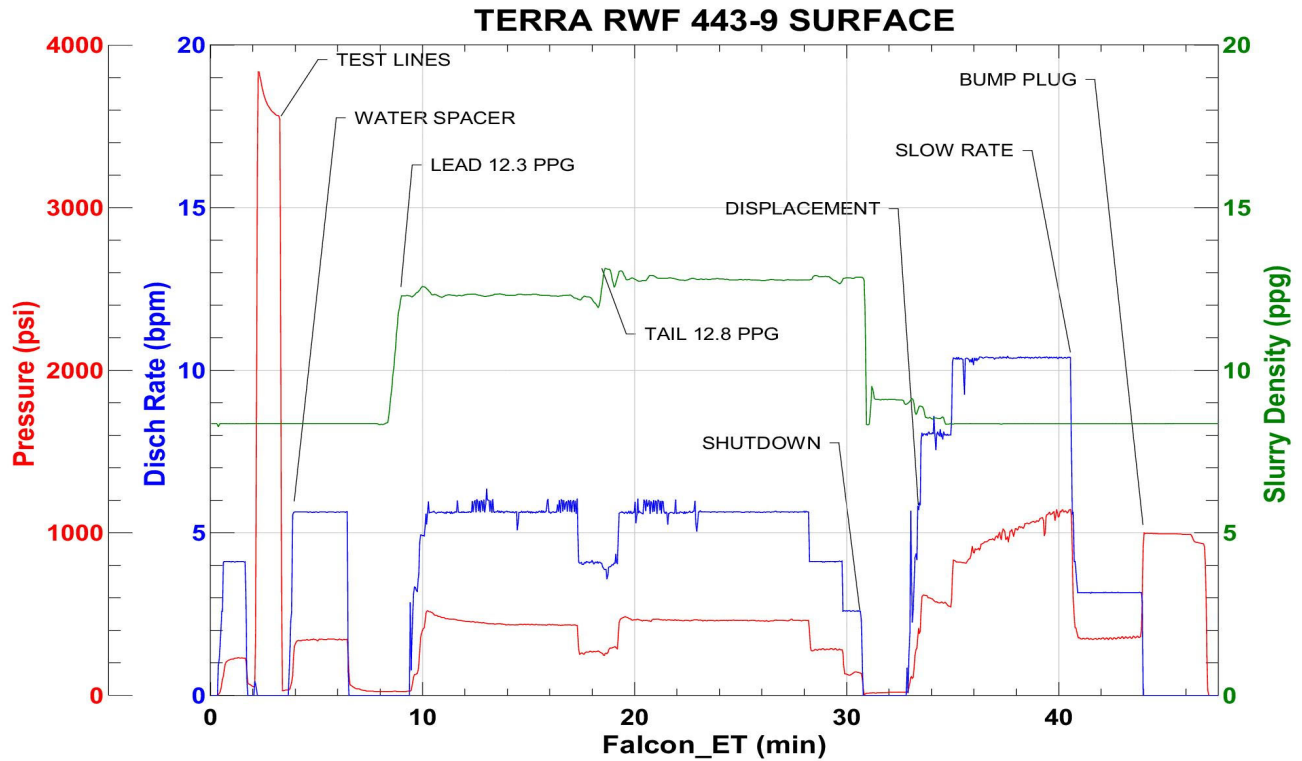


JobMaster Program Version 5.01C1

Job Number: 79881

Customer: TERRA

Well Name: RWF 443-9



BJ Services

Job Start: Saturday, January 15, 2022