

Name	Arrive Wellsite	Depart Wellsite	Name	Arrive Wellsite	Depart Wellsite	Name	Arrive Wellsite	Depart Wellsite
Tien Bui	2022-02-17	2022-02-21						

Mud Properties Record

Date / Time	Run No.	Depth (ft)	Mud Type	Density (ppg)	Viscosity (cP)	pH	Fluid Loss (cm3)	Oil / Water	Source	Total Chlorides (ppm)	K+ (%)
2022-02-17 16:09	1	1959.00	Oil Based Mud	9.3	11	N/A	18.0	79.5/20.5	Active Pit	25000	0.00
2022-02-19 09:10	1	9342.00	Oil Based Mud	10.1	13	N/A	16.5	79.3/20.7	Active Pit	29000	0.00
2022-02-20 09:22	1	15690.00	Oil Based Mud	10.1	16	N/A	18.7	80.3/19.7	Active Pit	25000	0.00

Equipment and Service Data

Run No.	Tool	Serial Number	Measurement	Sensor Offset (ft)	Bit Offset (ft)	Max O.D. (in)	Min I.D. (in)
1	AutoTrak Curve Steering Unit	14547137	Near Bit VSS	5.93	6.78	6.750	4.330
1	AutoTrak Curve Steering Unit	14547137	Near Bit Inclination	5.93	6.78	6.750	4.330
1	AutoTrak Curve MWD	12200463	Gamma (single)	2.78	12.95	6.750	3.250
1	AutoTrak Curve MWD	12200463	Directional (mag)	12.27	22.44	6.750	3.250

Service and Tool Mnemonics

Mnemonic	Name	Description
ATC SU	AutoTrak Curve SU	Auto Trak Curve Steering Unit
ATC MWD	AutoTrak Curve MWD	Auto Trak Curve MWD
ATC LCPM	AutoTrak Curve LCPM	Auto Trak Curve LCPM

Comments

1	Baker Hughes Company runs 1 utilized 6 ¾ inch NaviGamma services (Gamma Ray and Directional) behind an 8 ½ inch PDC bit and rotary steerable assembly from 1959 to 17252 feet MD (1959 to 6660 feet TVD).
2	The Gamma Ray Apparent (GRAM) data is presented 0 to 300 API, per the customer's request.
3	Depth measurements were obtained from a depth control system not supplied or operated by Baker Hughes. Due to a lack of control by Baker Hughes logging engineers, depth calibrations and measurements could not be independently verified and the unverified depths as supplied to Baker Hughes are being used to present logging data.

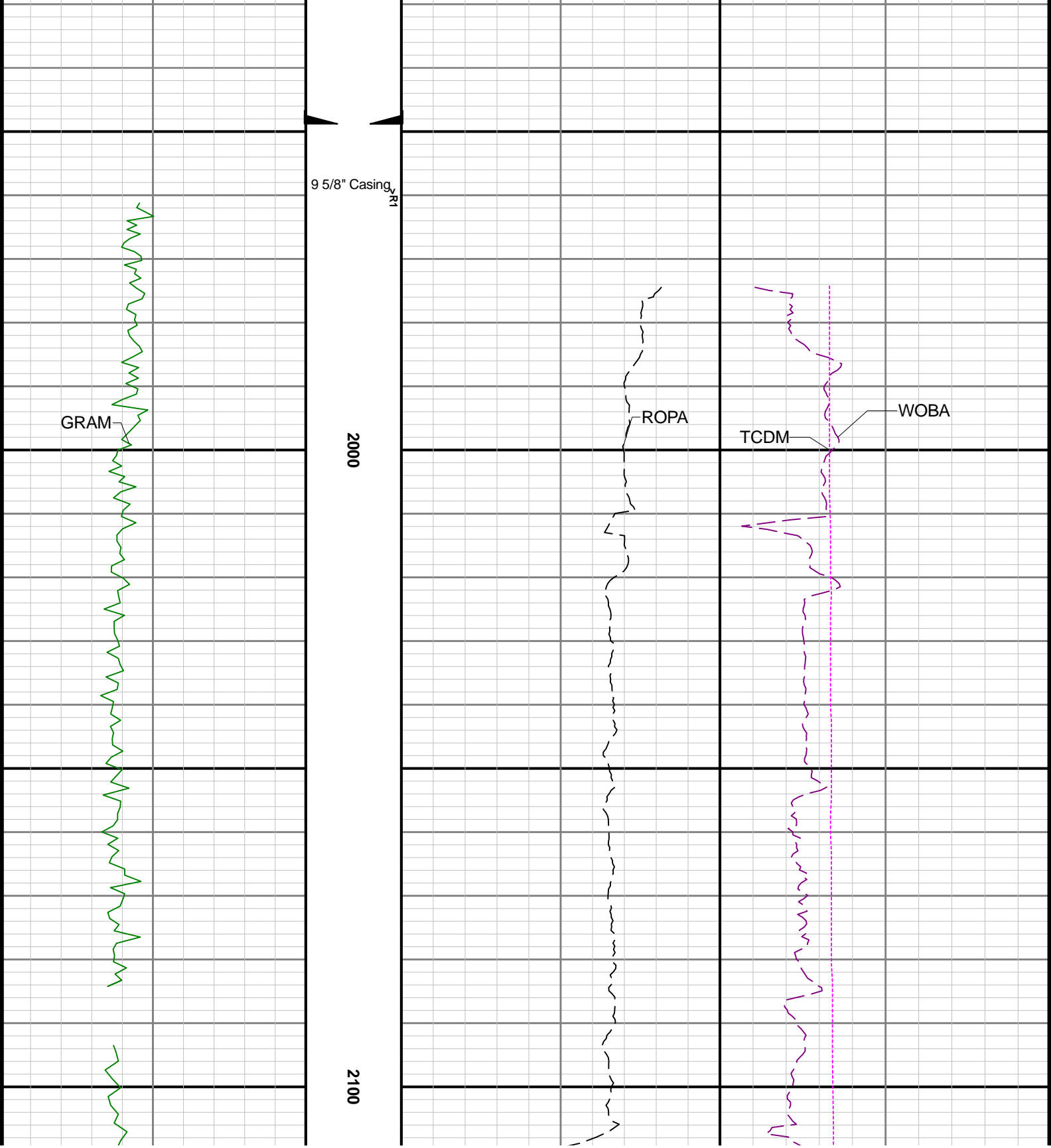
Remarks

Number	Depth (ft)	Hole Section (in)	Run No.	Remark
1	2942.00	8.500	1	The interval from 2942 to 3414 feet MD (2937 to 3406 feet TVD) was not logged due to a temporary failure of third party depth tracking system.

Curve Mnemonics

Presented Curves	Description	Units
ROPA	Depth Averaged ROP 3 ft Average	ft/h
WOBA	Weight On Bit, Average 1 ft Average	klb
GRAM	Gamma Ray - Apparent - Memory 0.5 ft Average	API
TCDM	Directional Real-Time Survey Temperature	degF

Gamma Ray - Apparent 0.5 ft Average GRAM	TVD 1:240 feet	Depth Averaged ROP 3 ft Average ROPA	Weight On Bit, Average 1 ft Average WOBA
0 300		1000 0	0 50
API		ft/h	klb
			Downhole Temperature TCDM
			0 300
			degF



9 5/8" Casing

GRAM

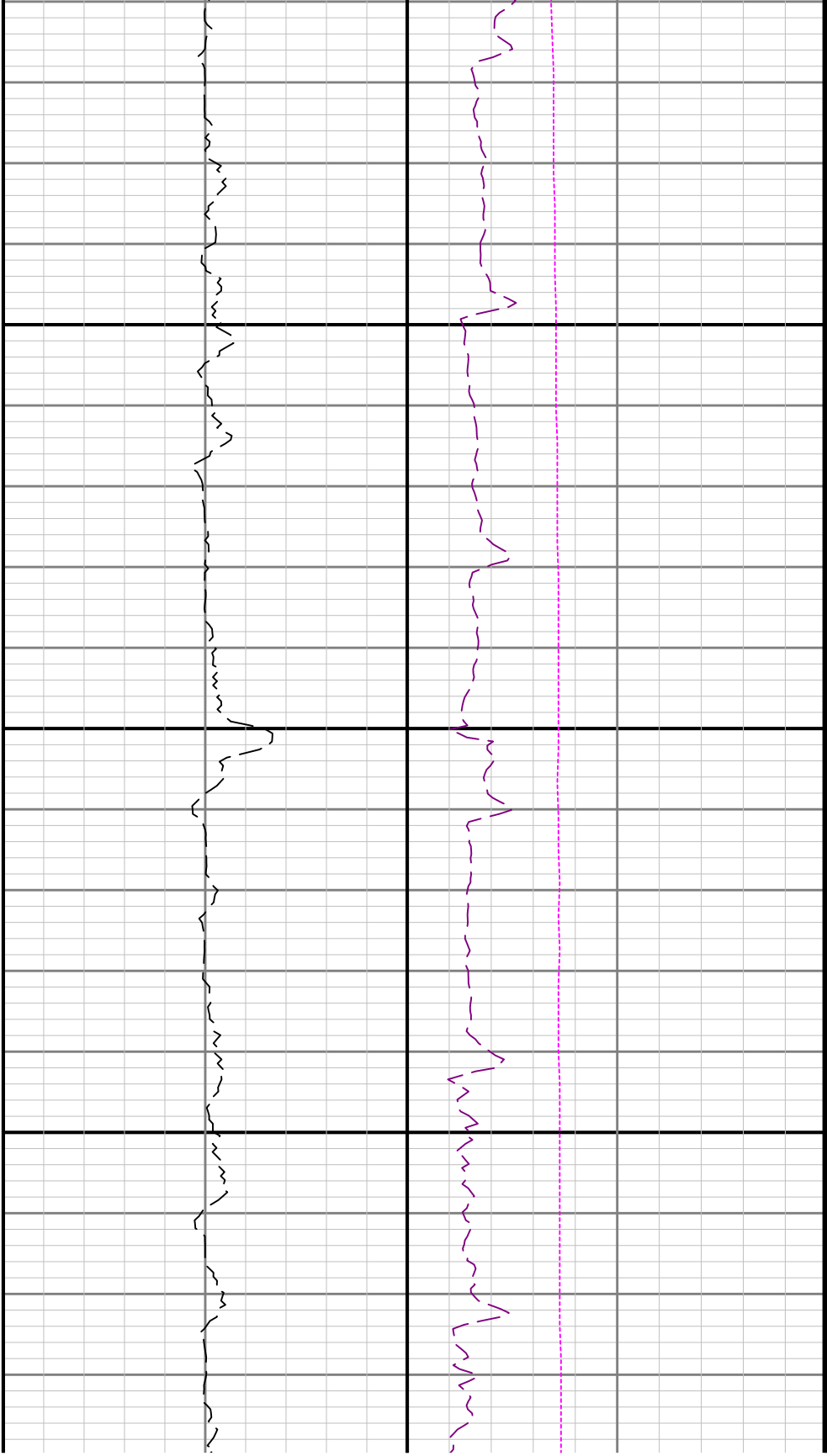
2000

2100

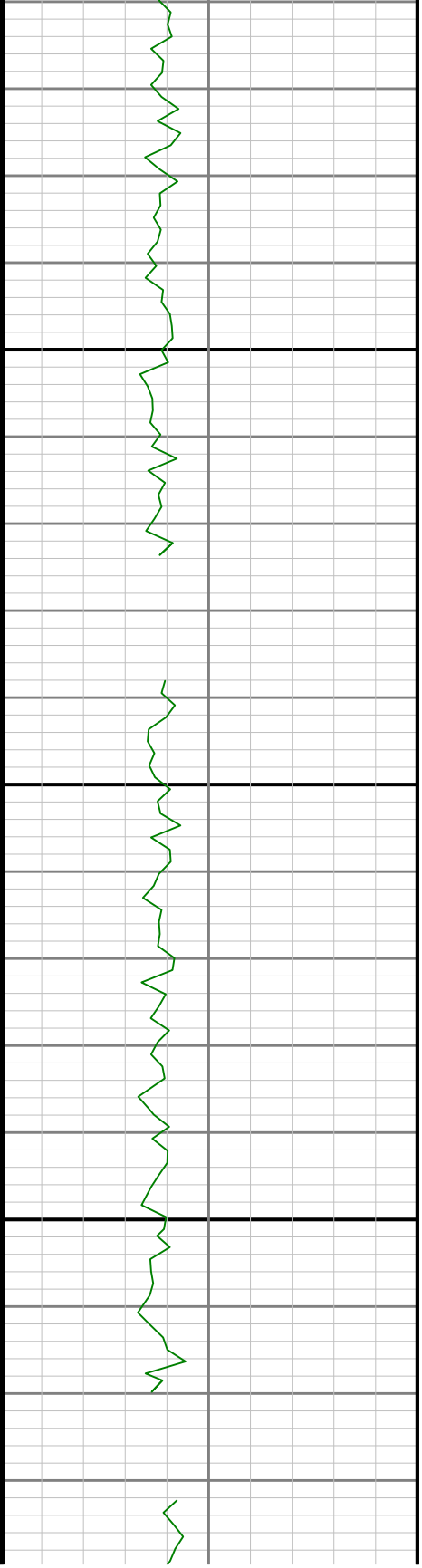
ROPA

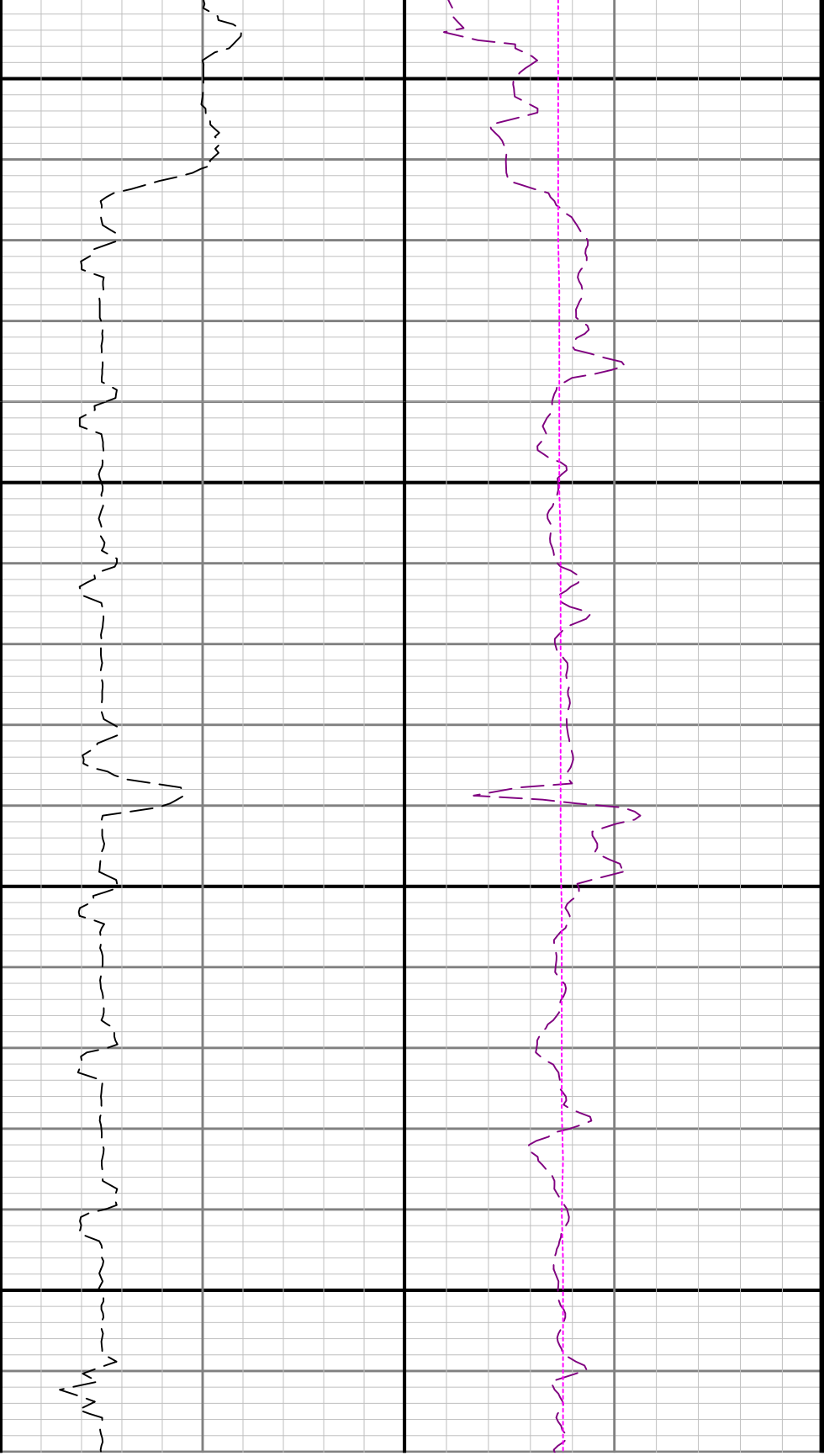
TCDM

WOBA



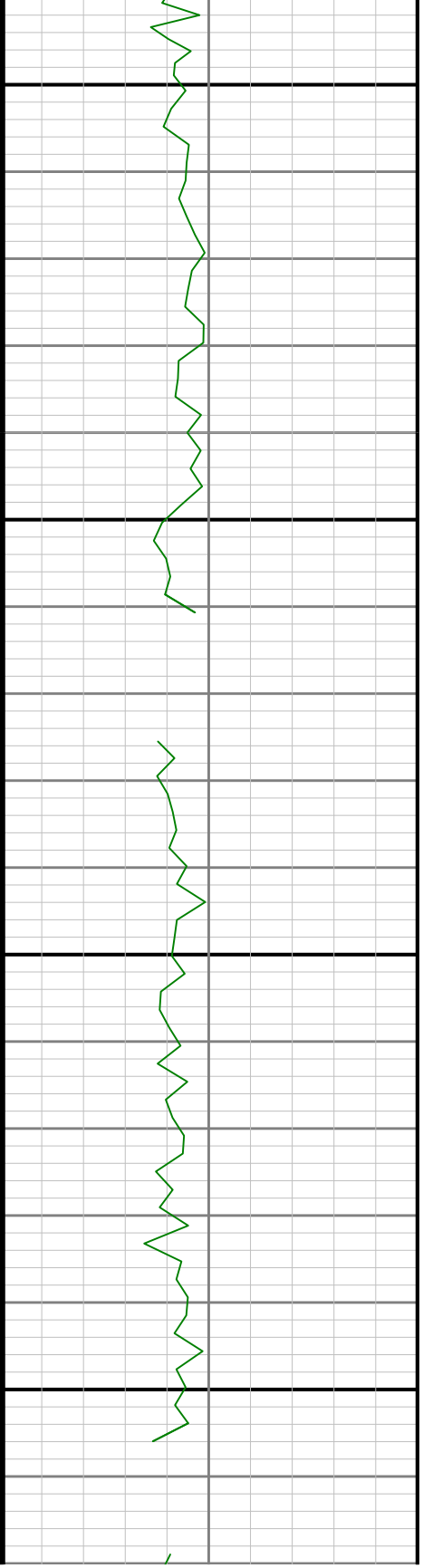
2200

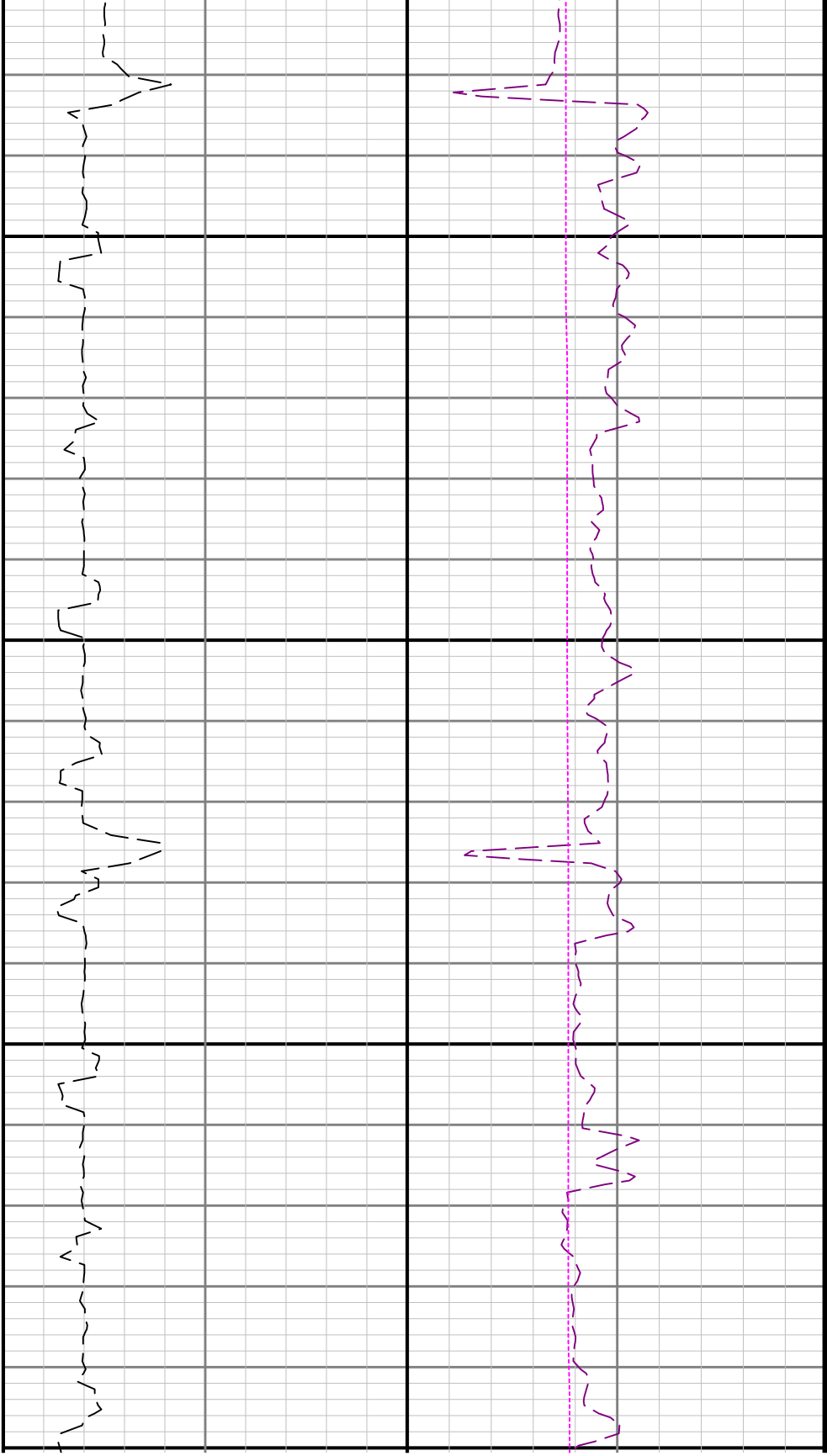




2300

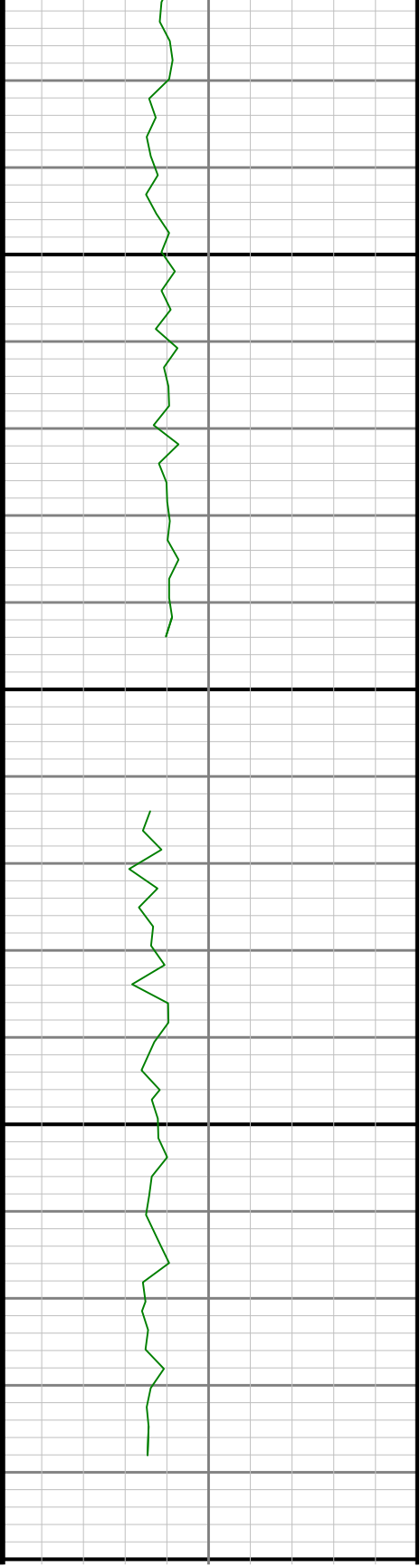
2400

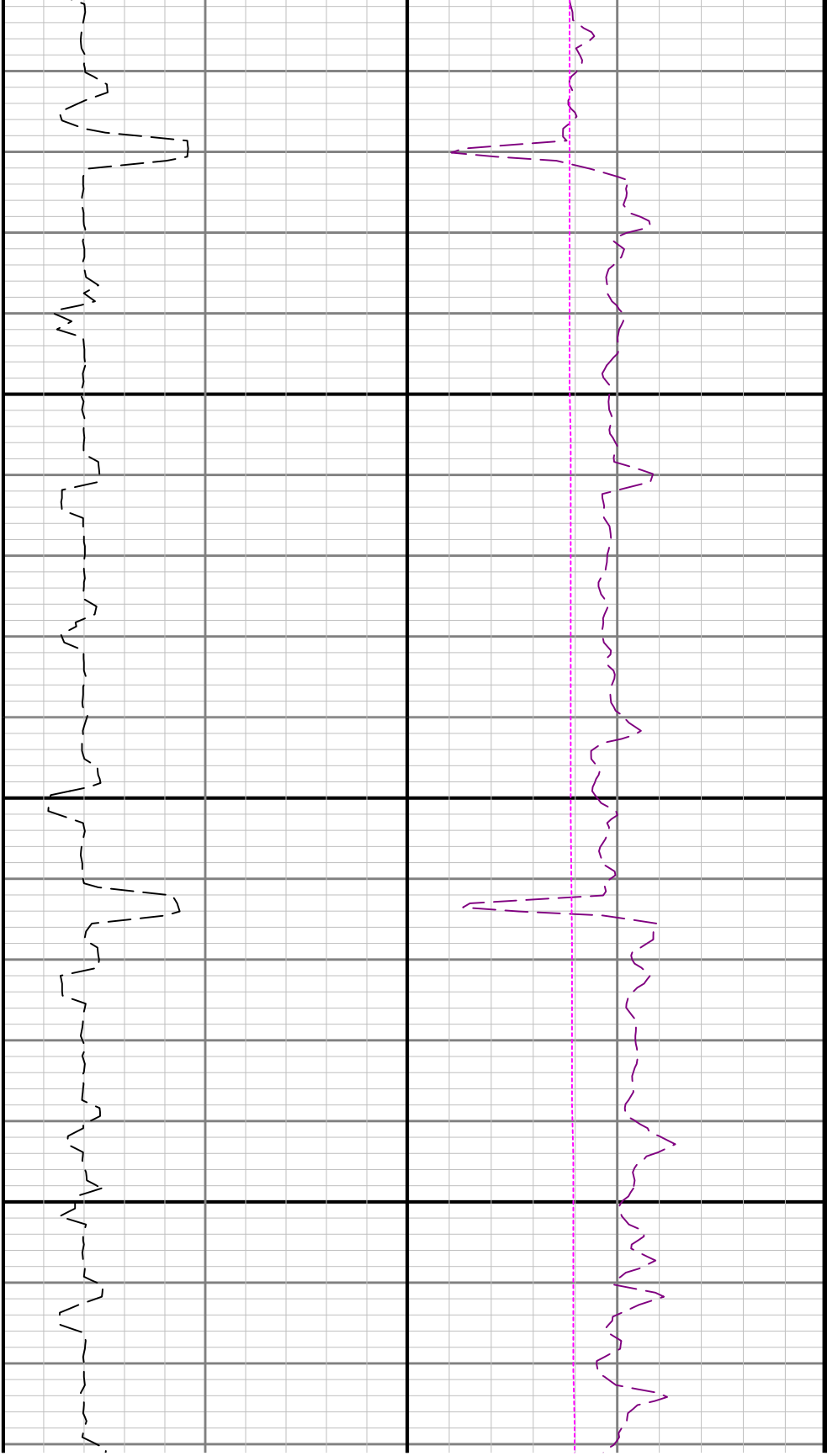




2500

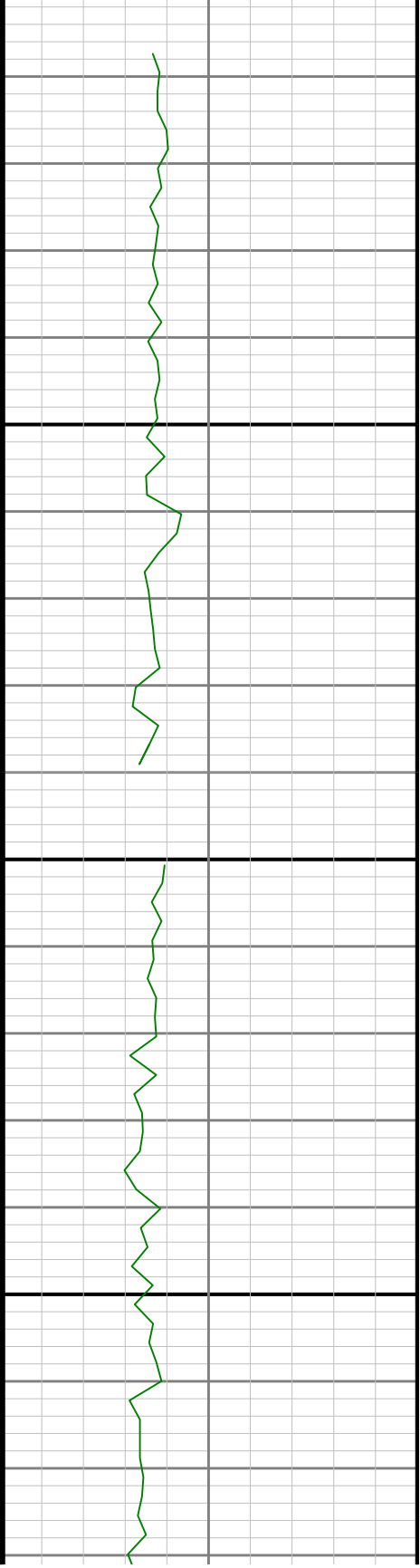
2600

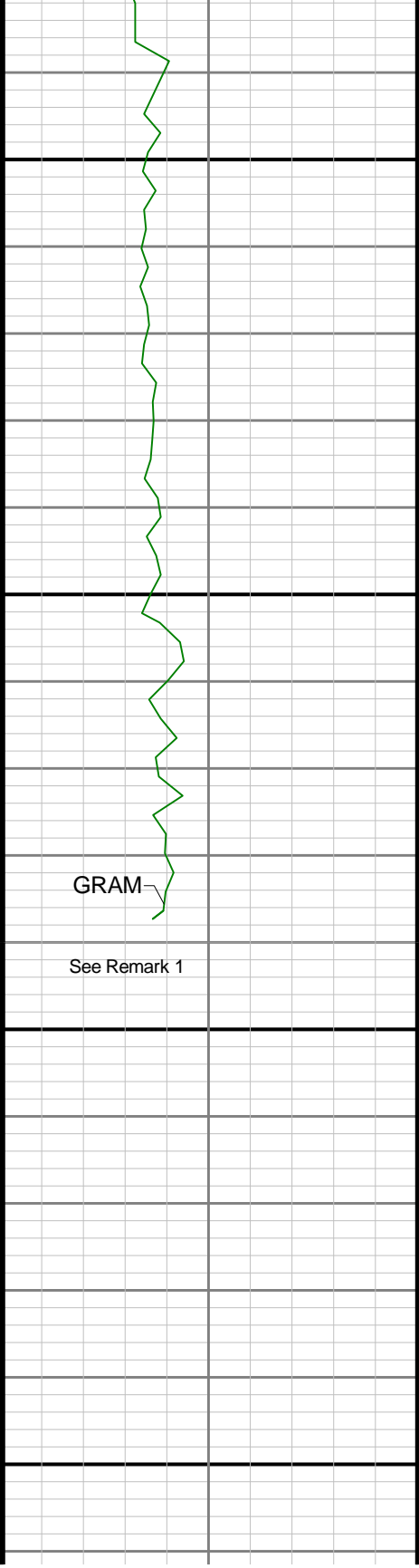




2700

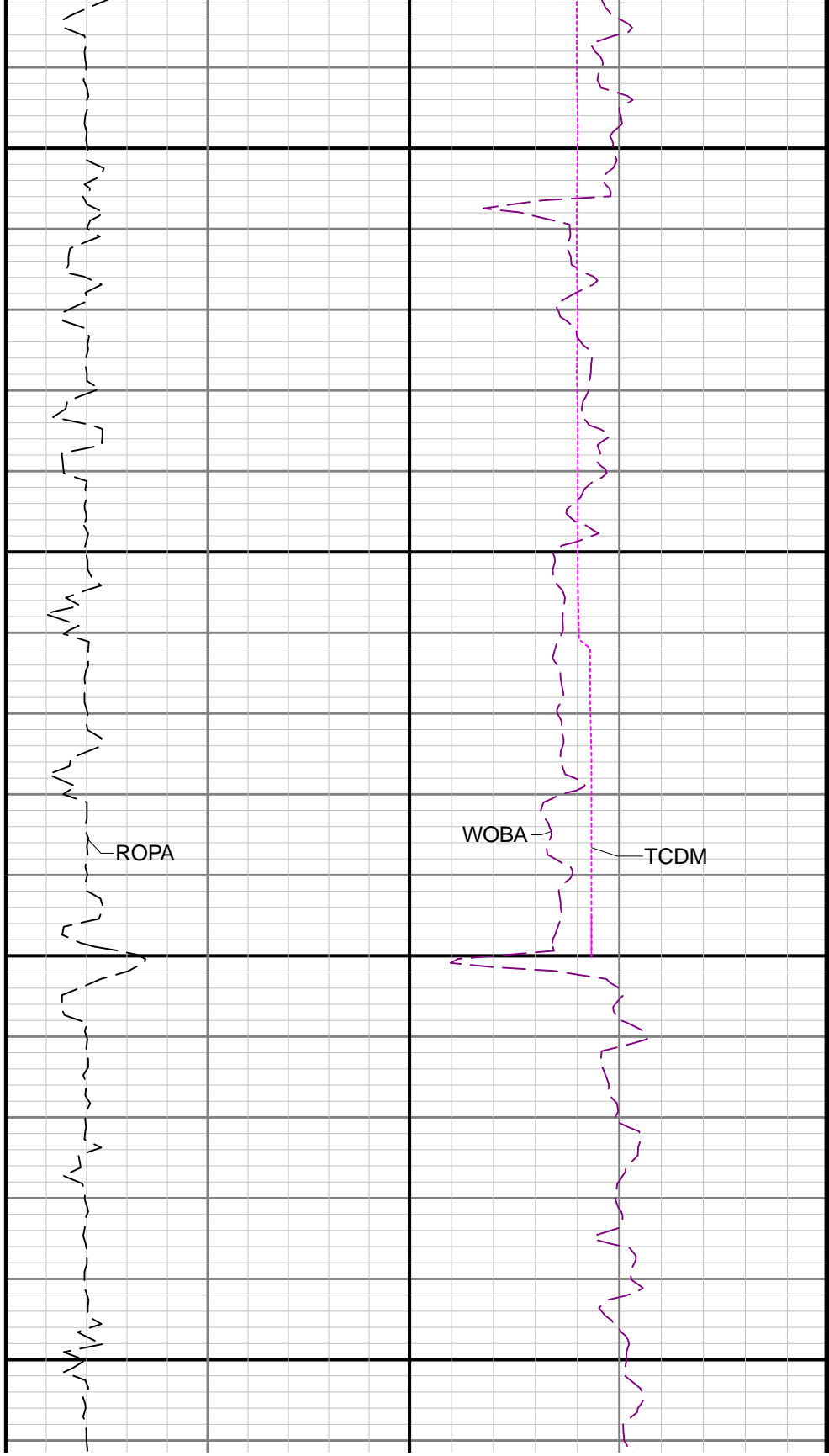
2800

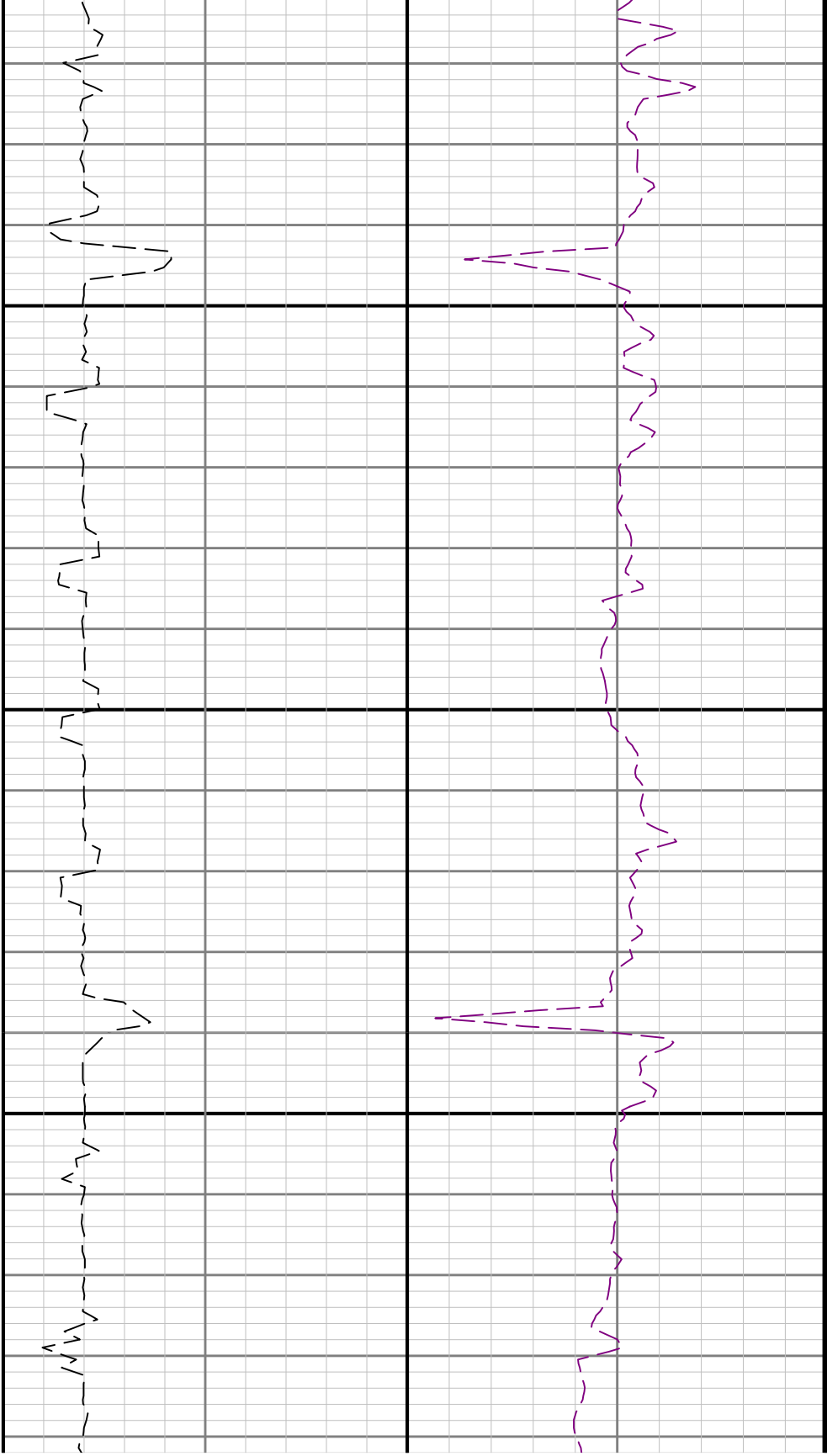




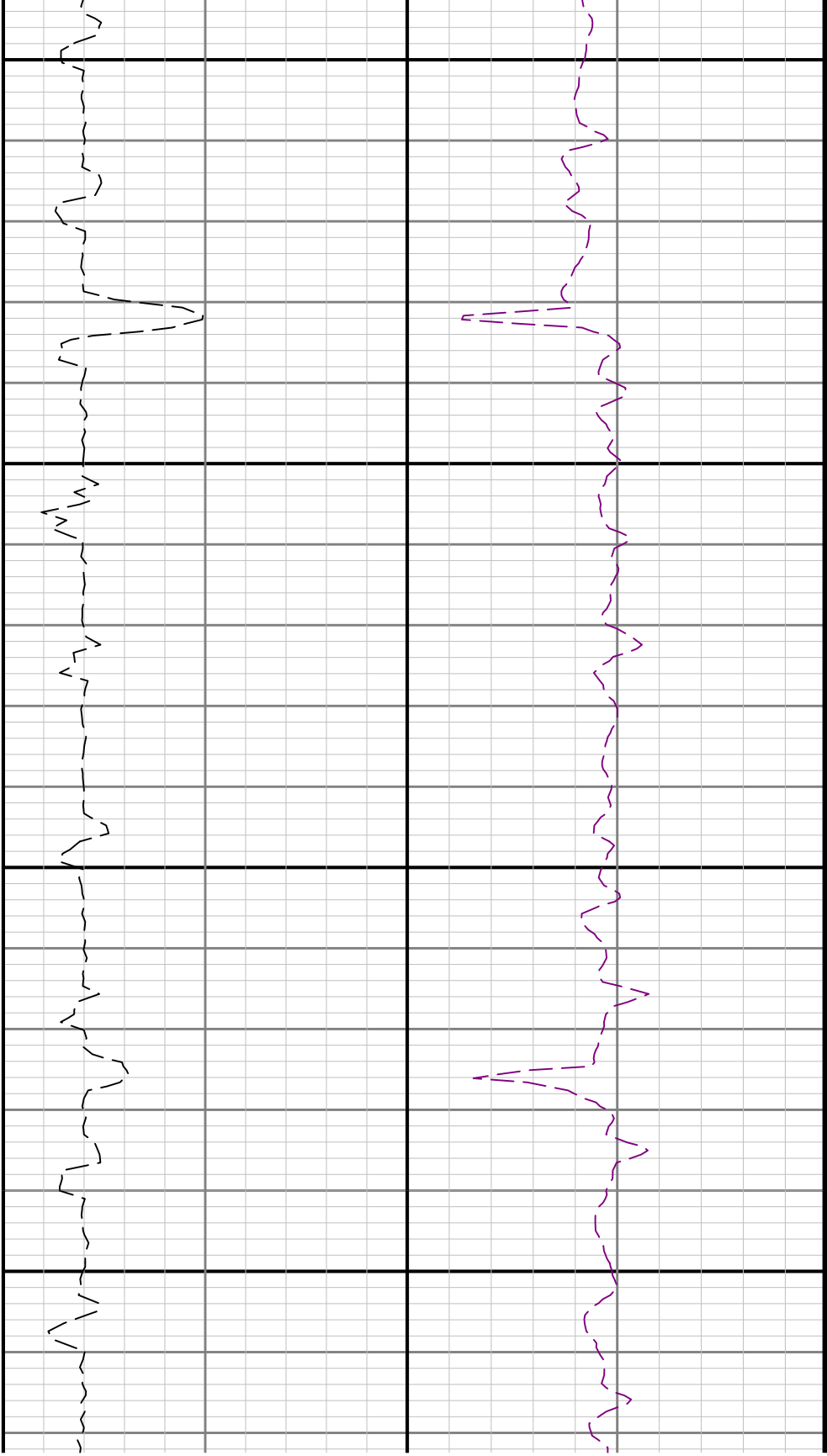
2900

3000



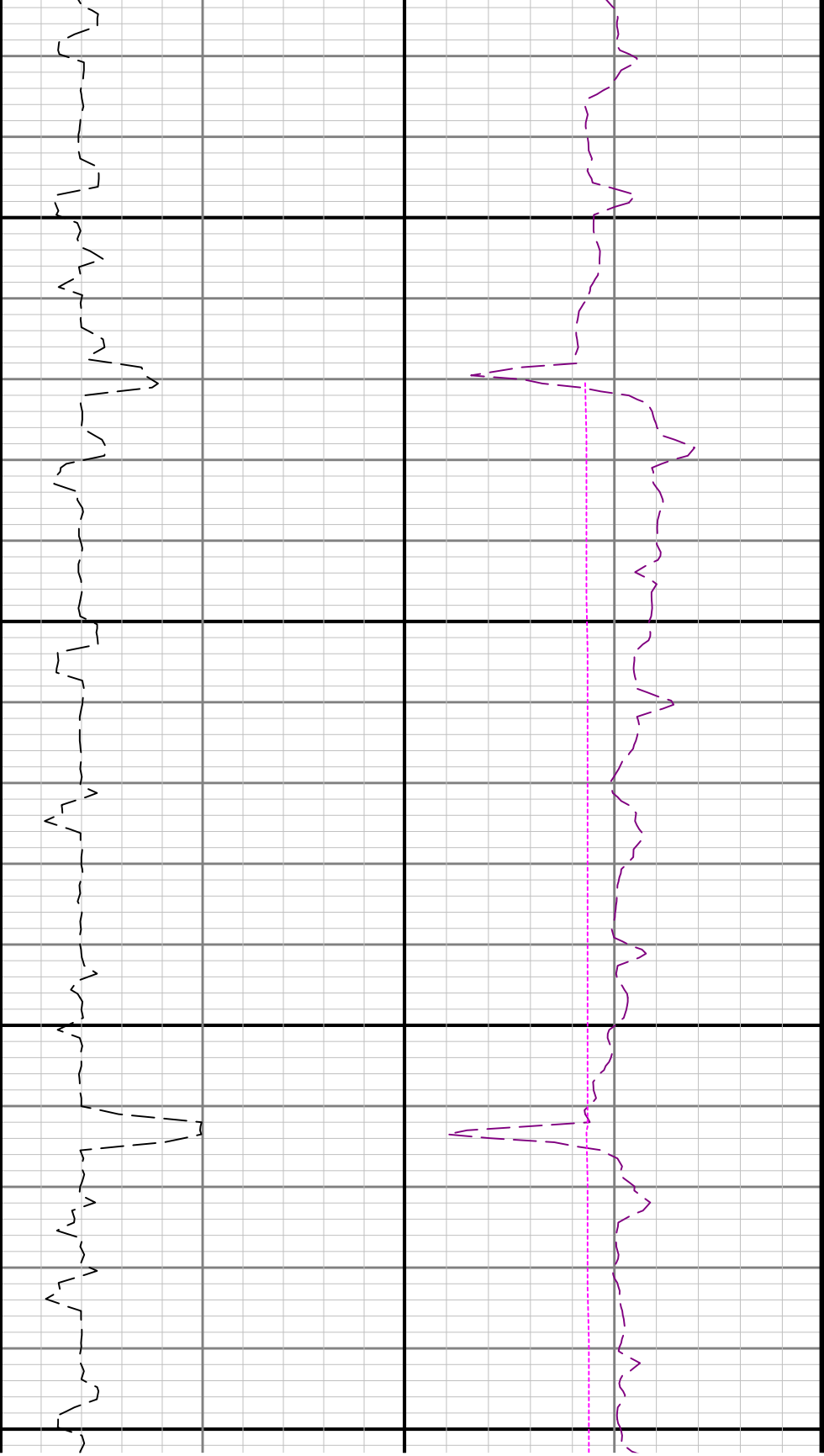


3100



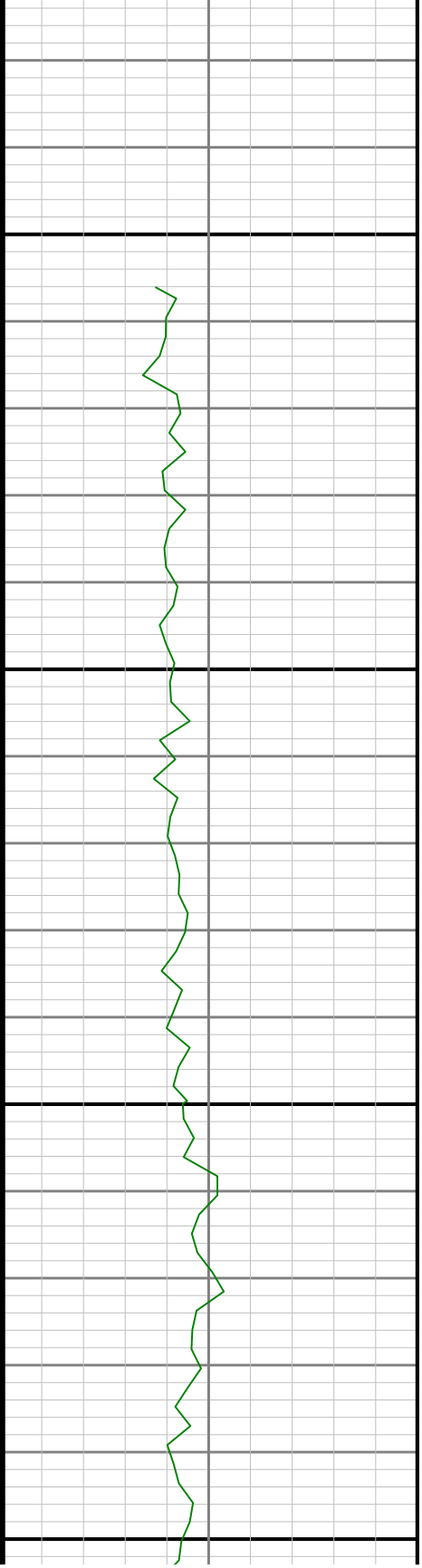
3200

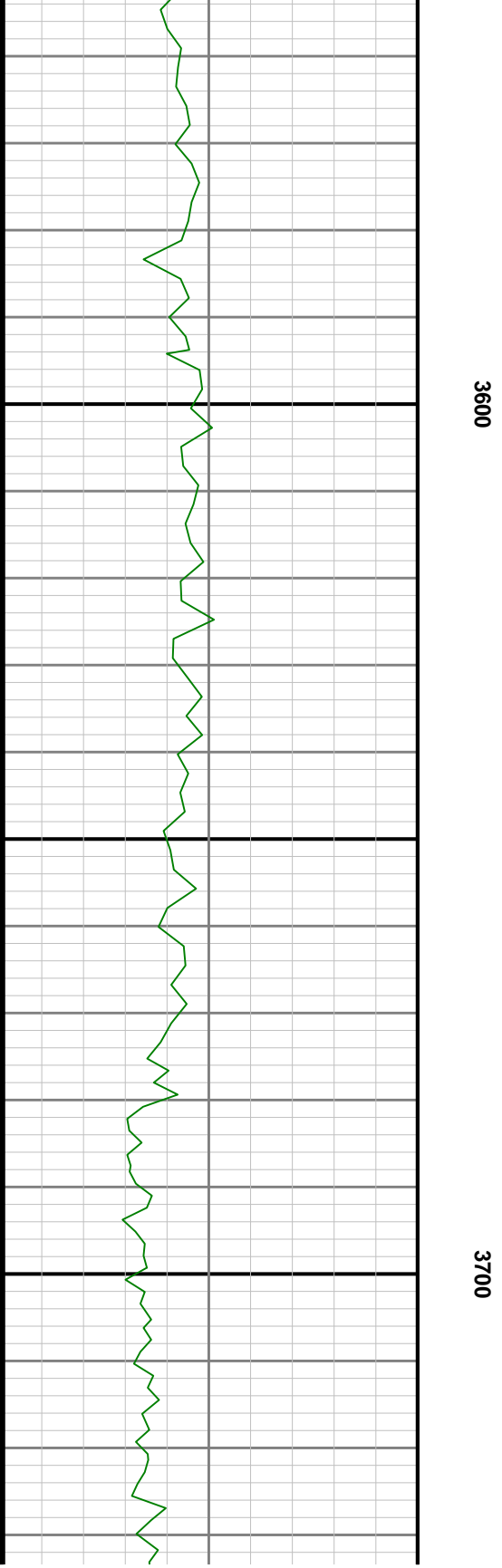
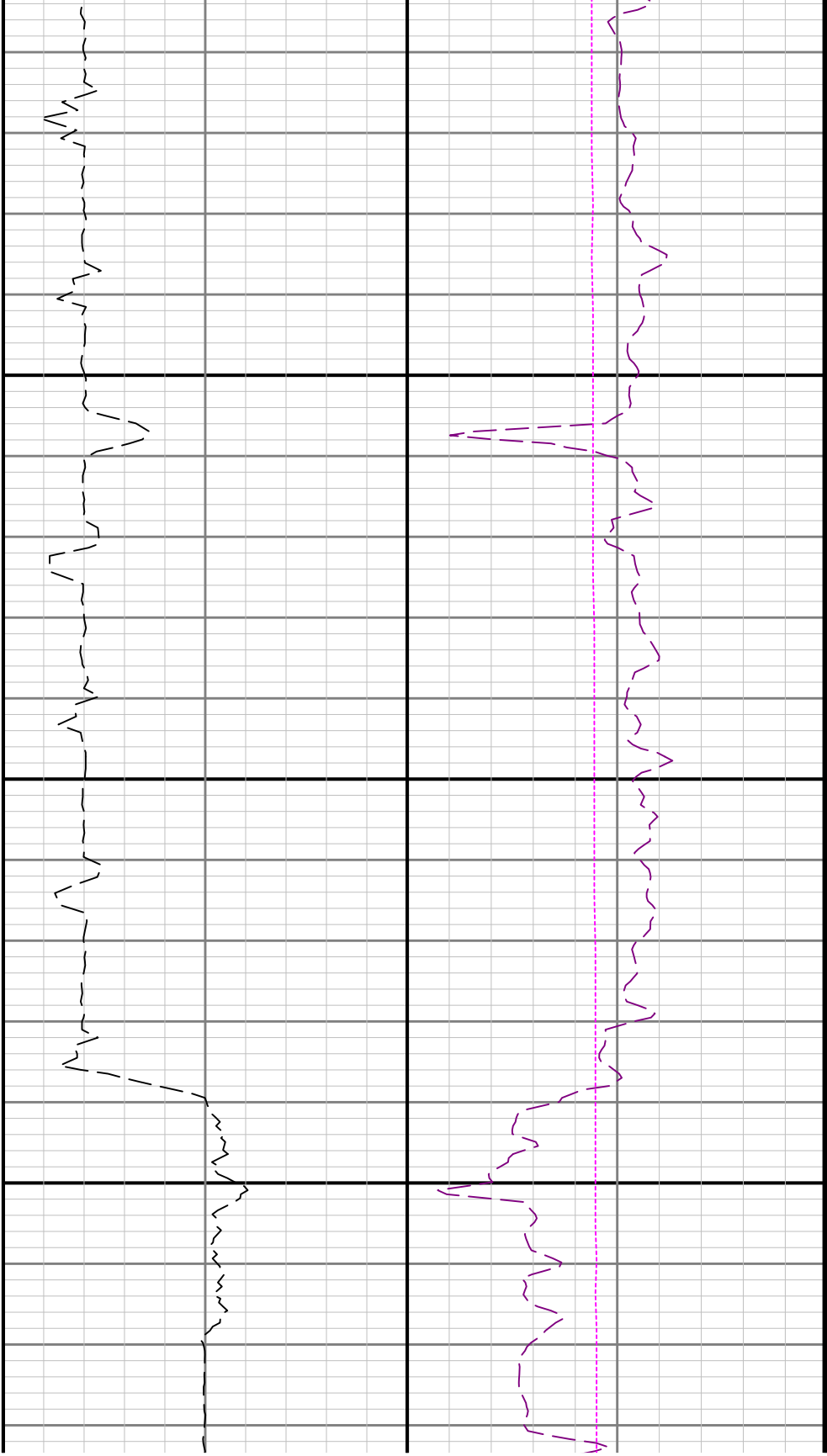
3300

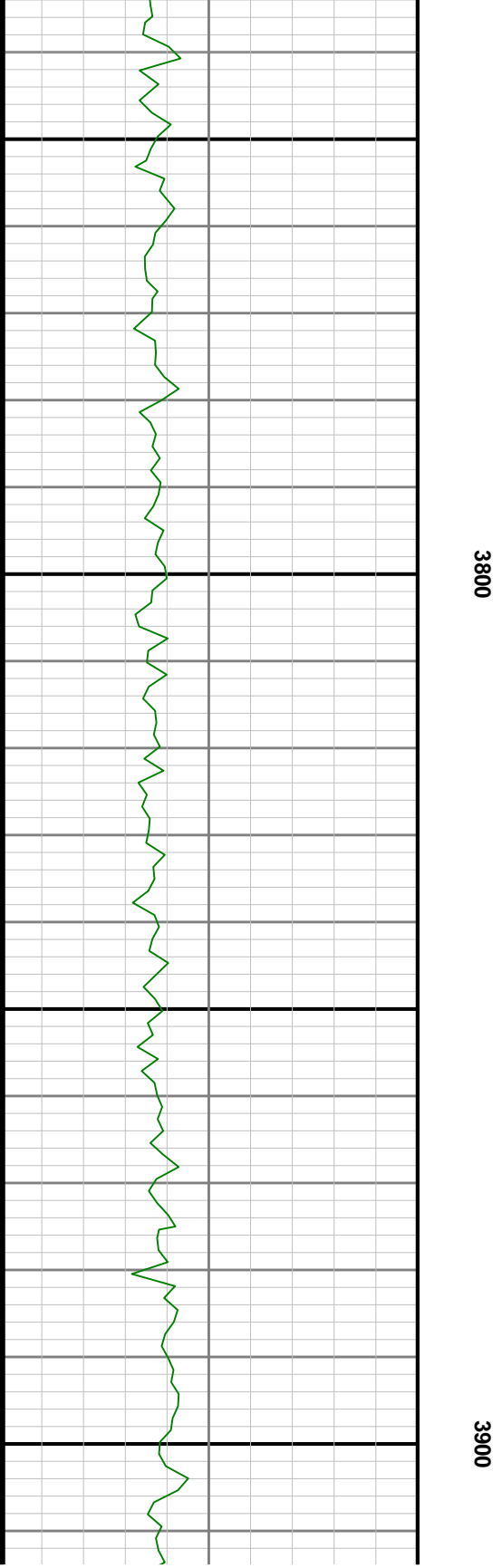
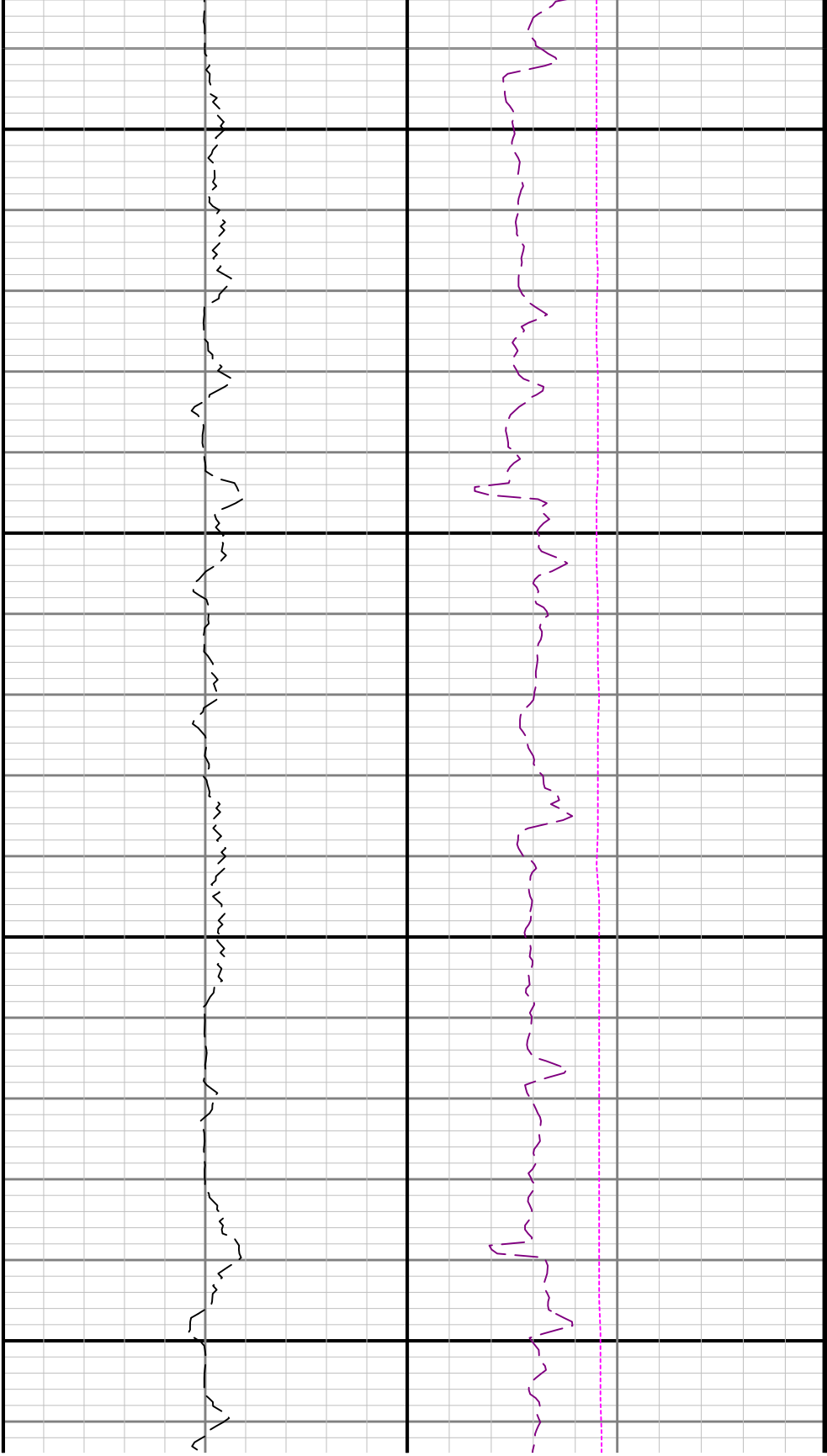


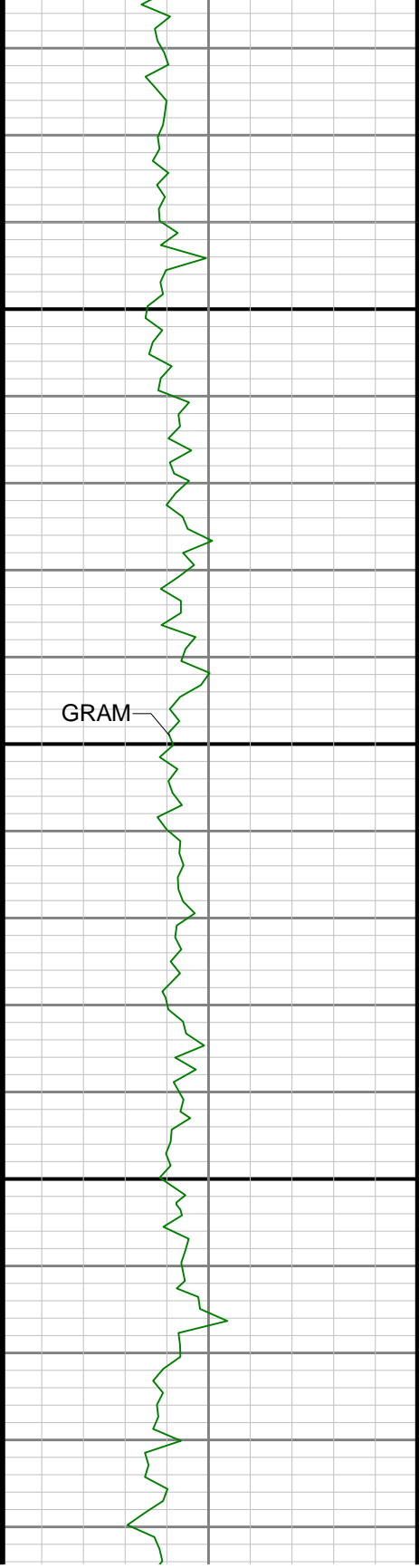
3400

3500

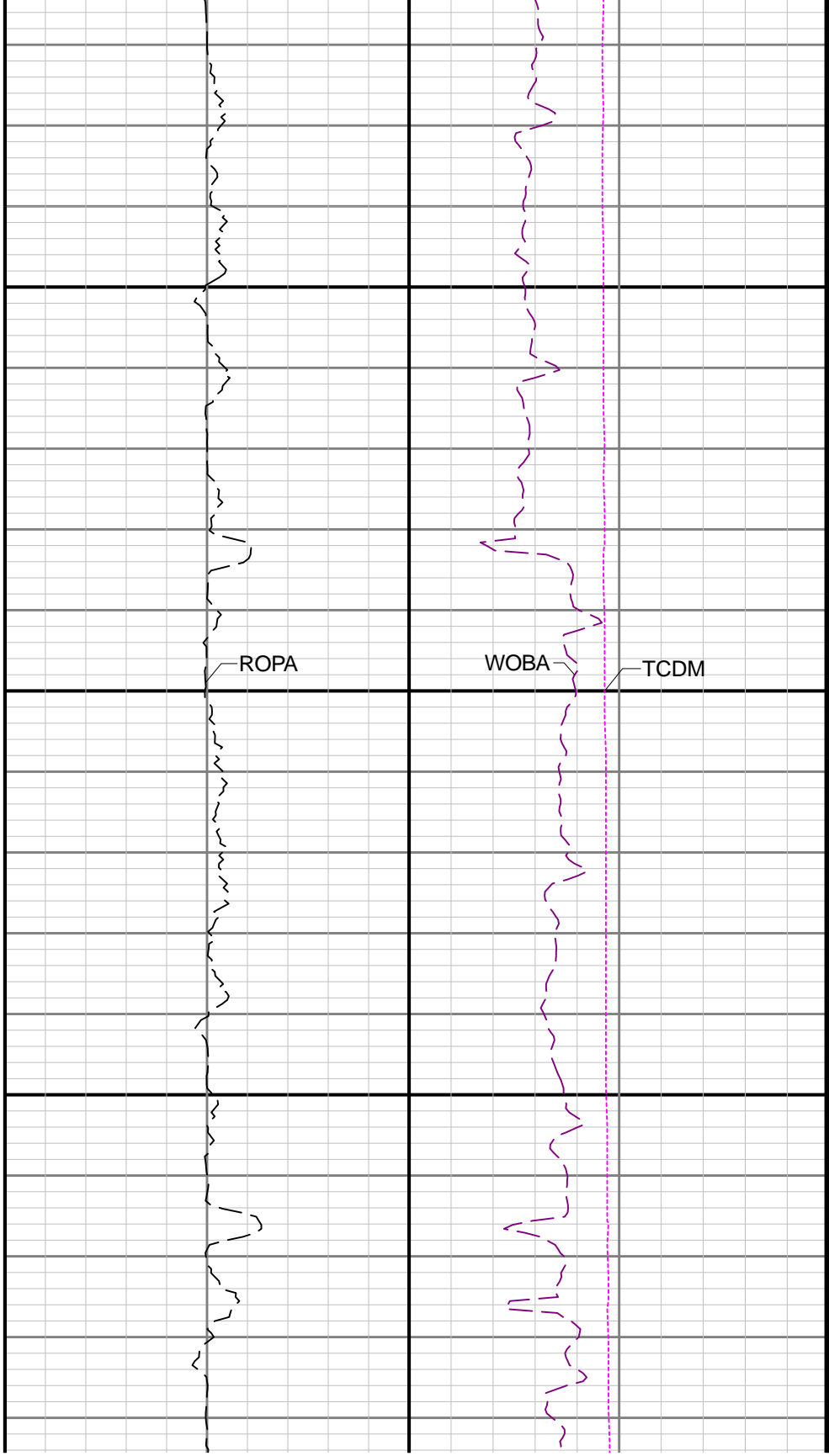


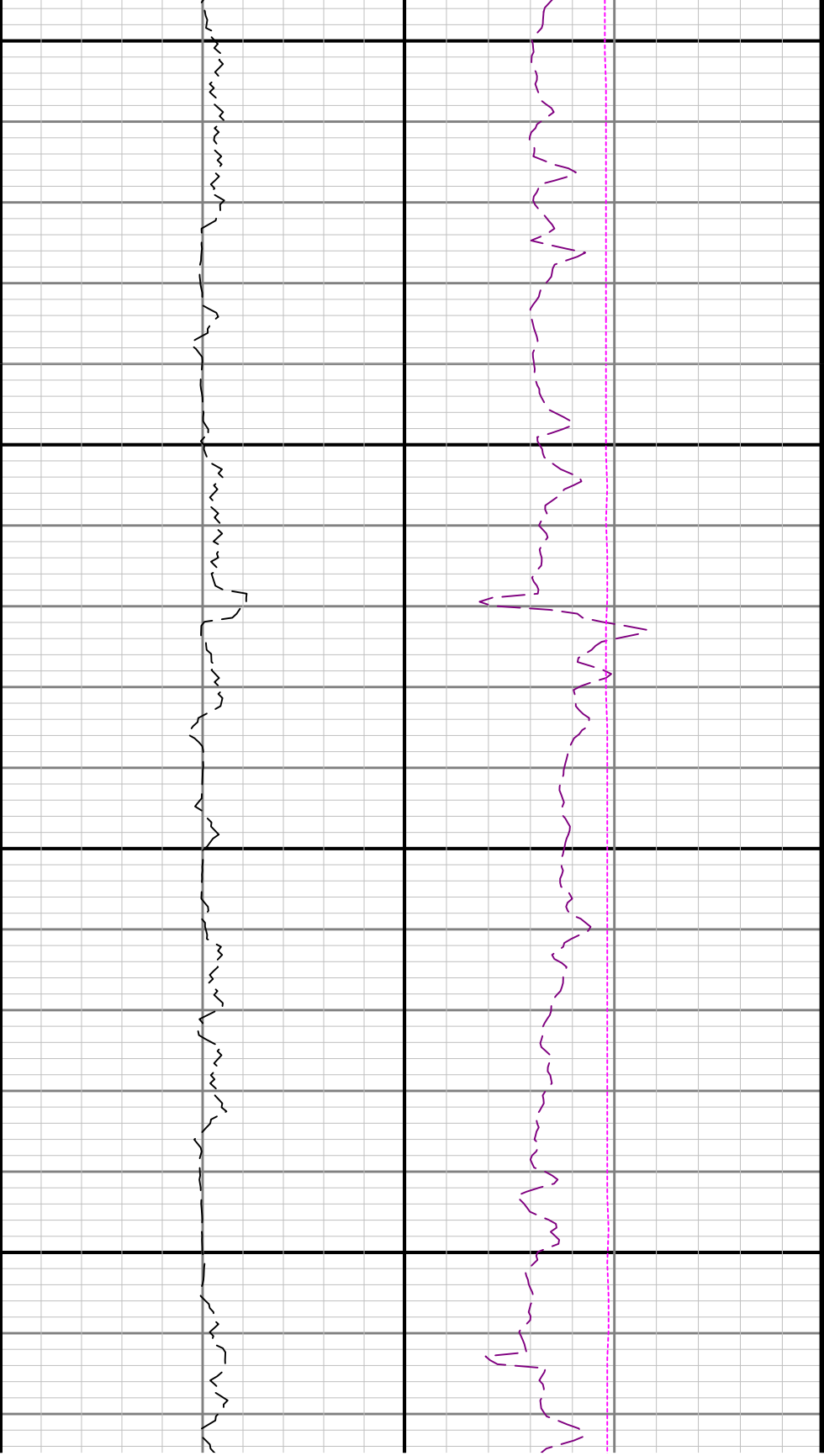






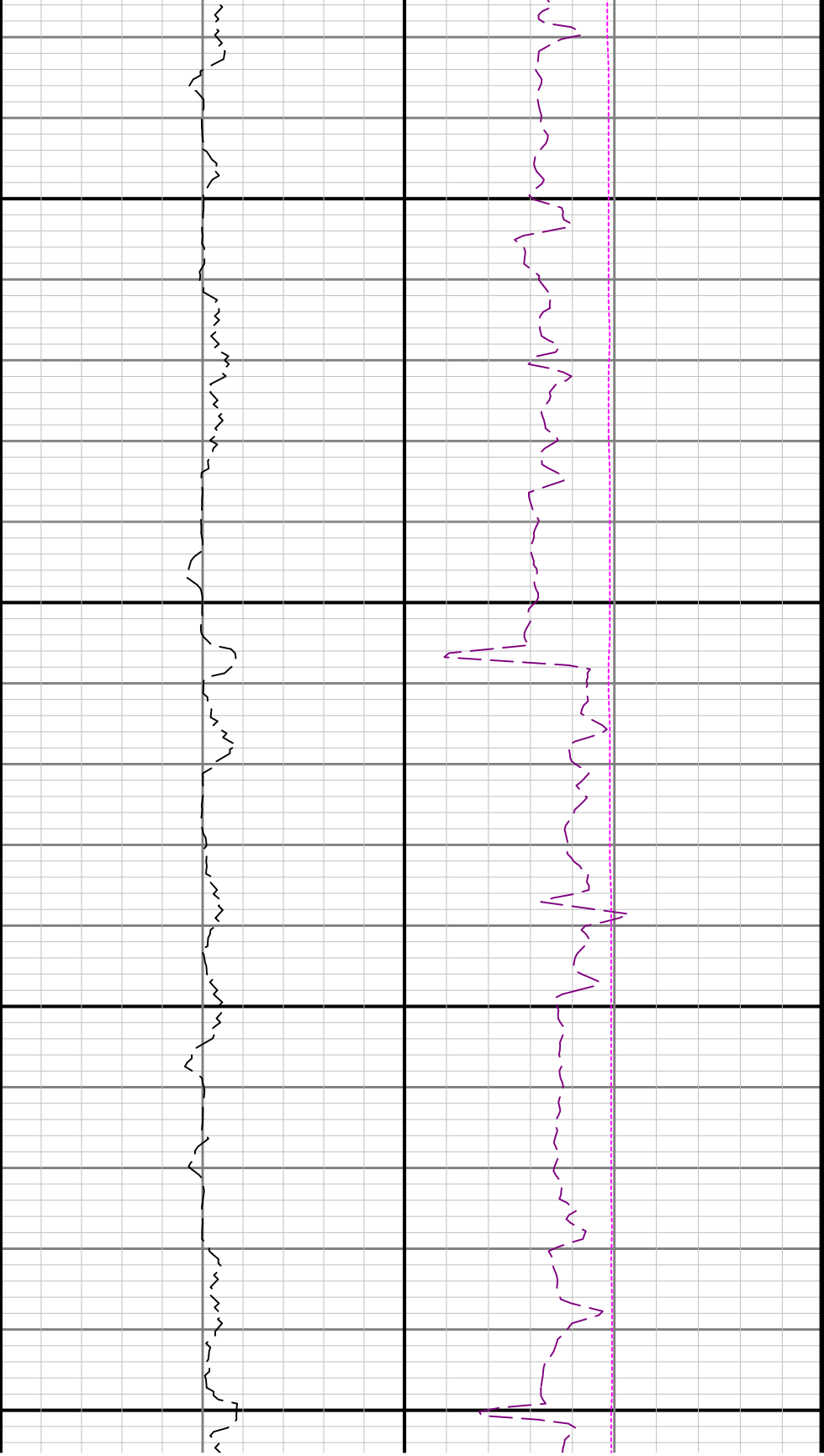
4000





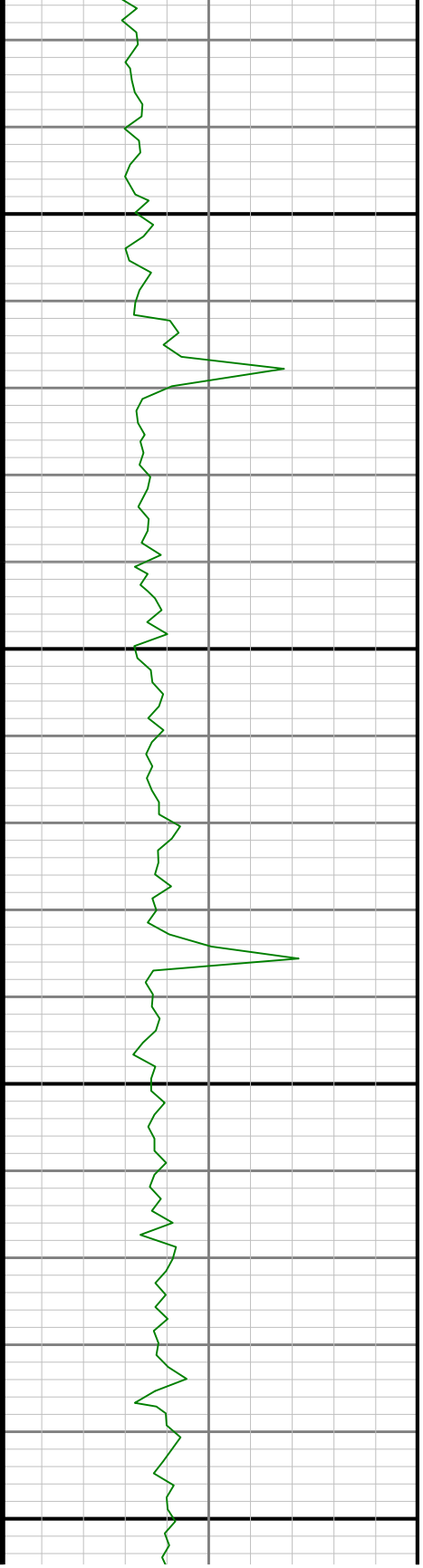
4100

4200



4300

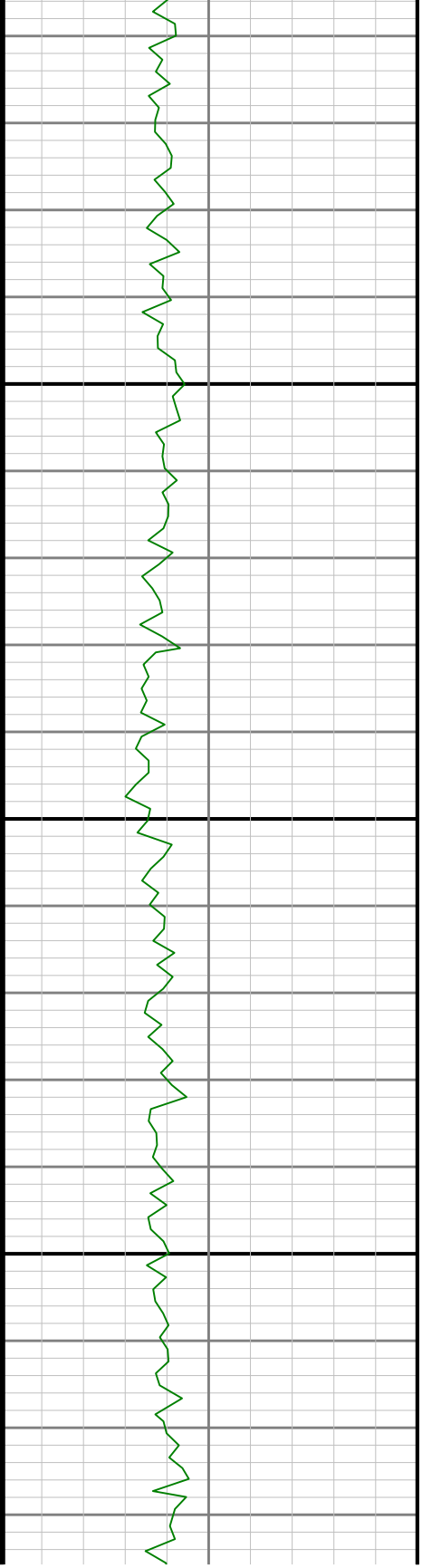
4400

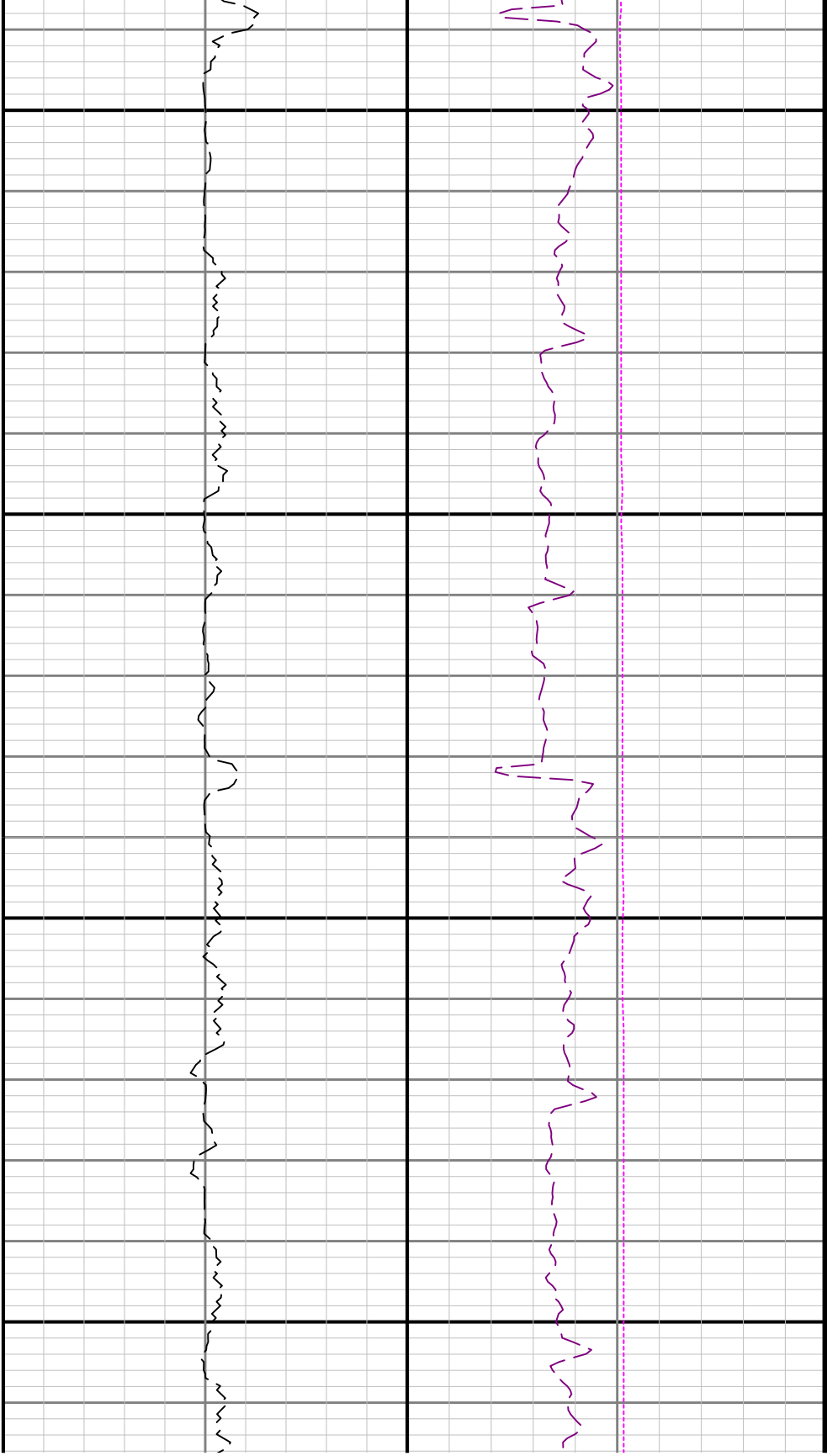




4500

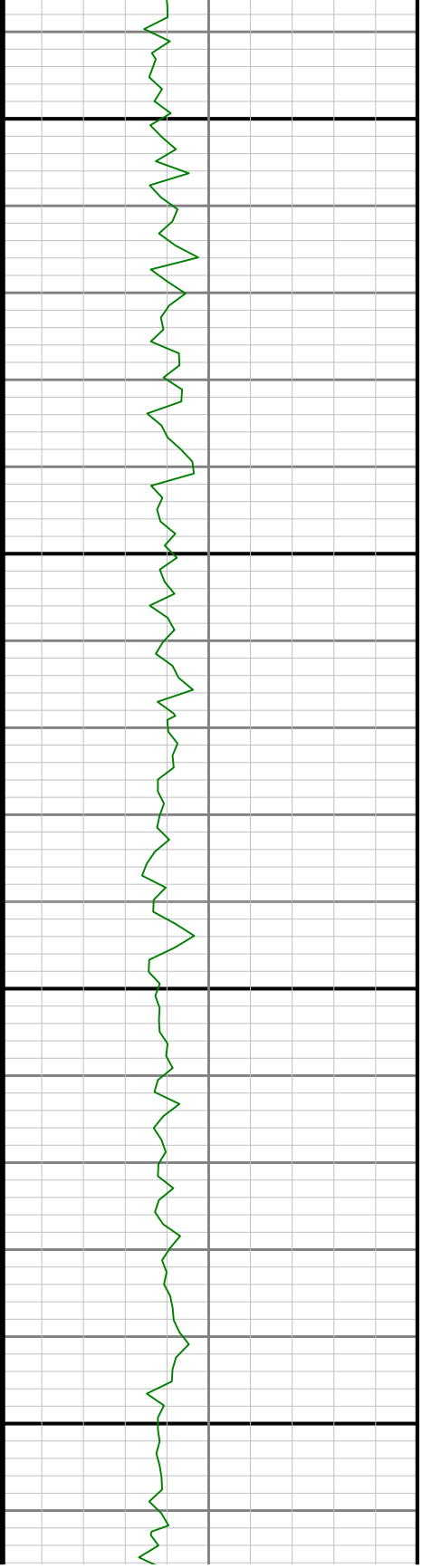
4600

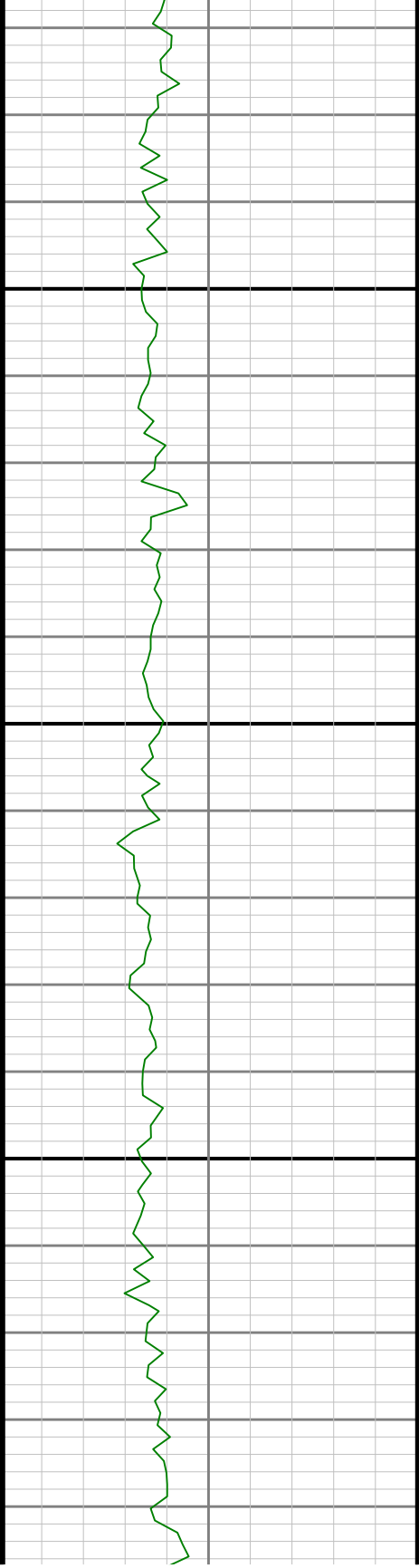




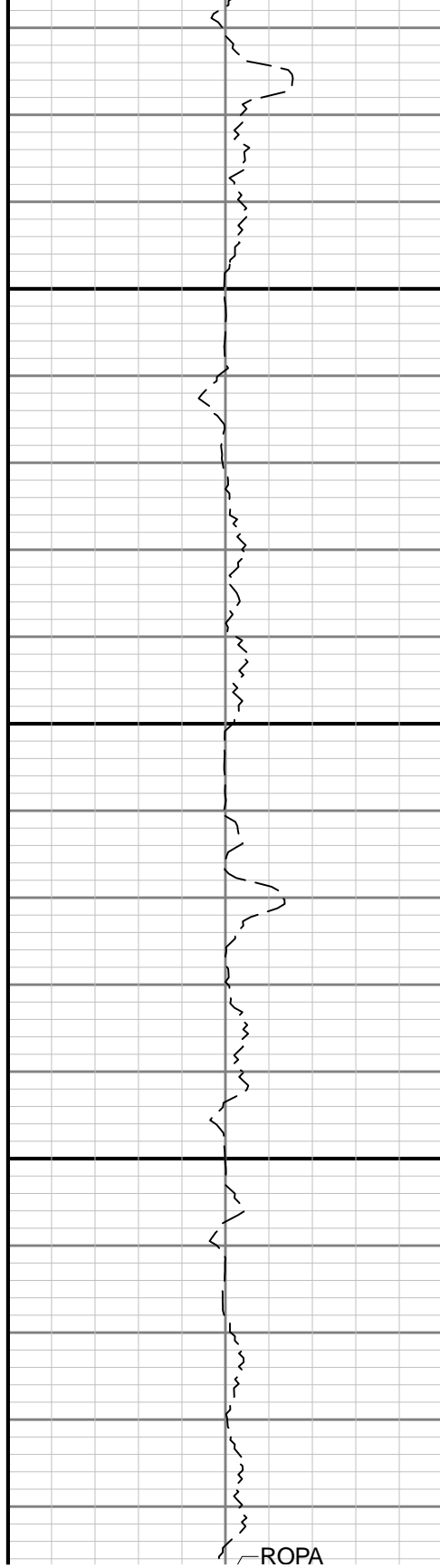
4700

4800

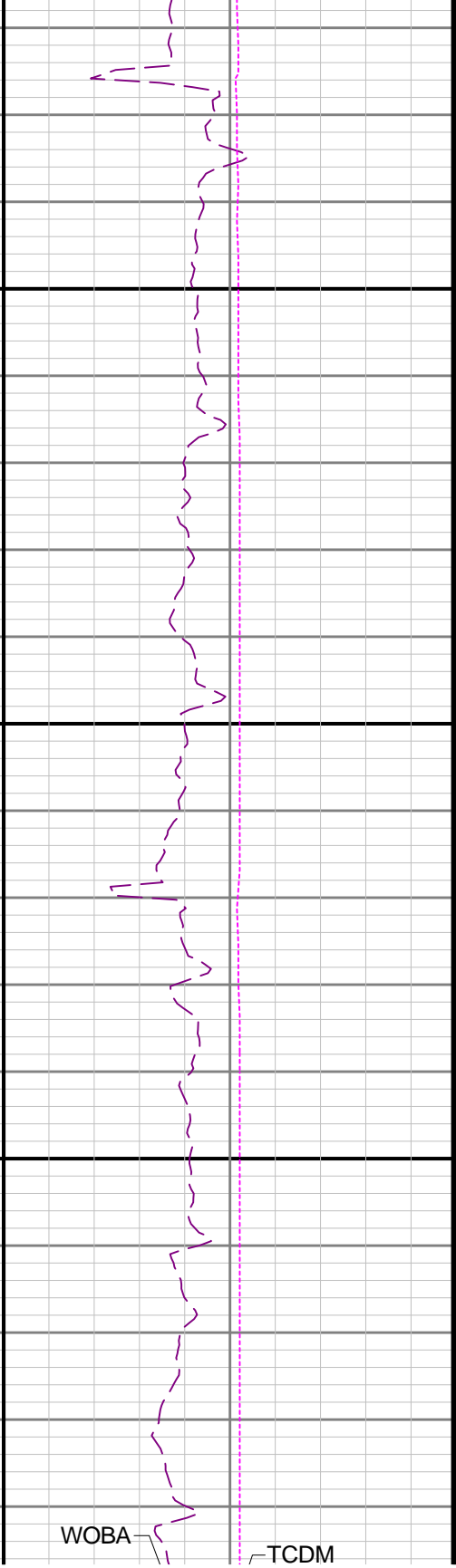




4900

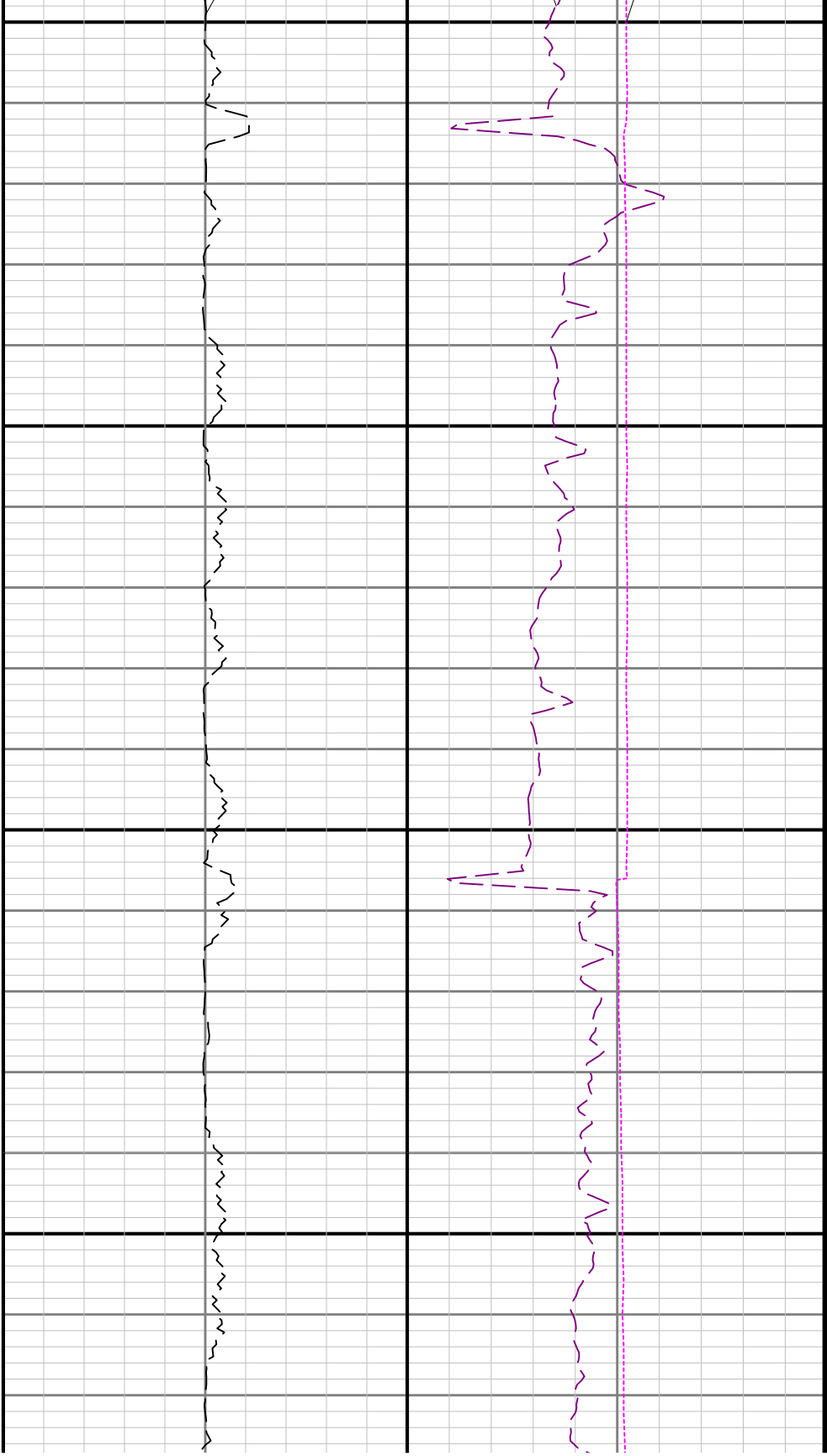


ROPA



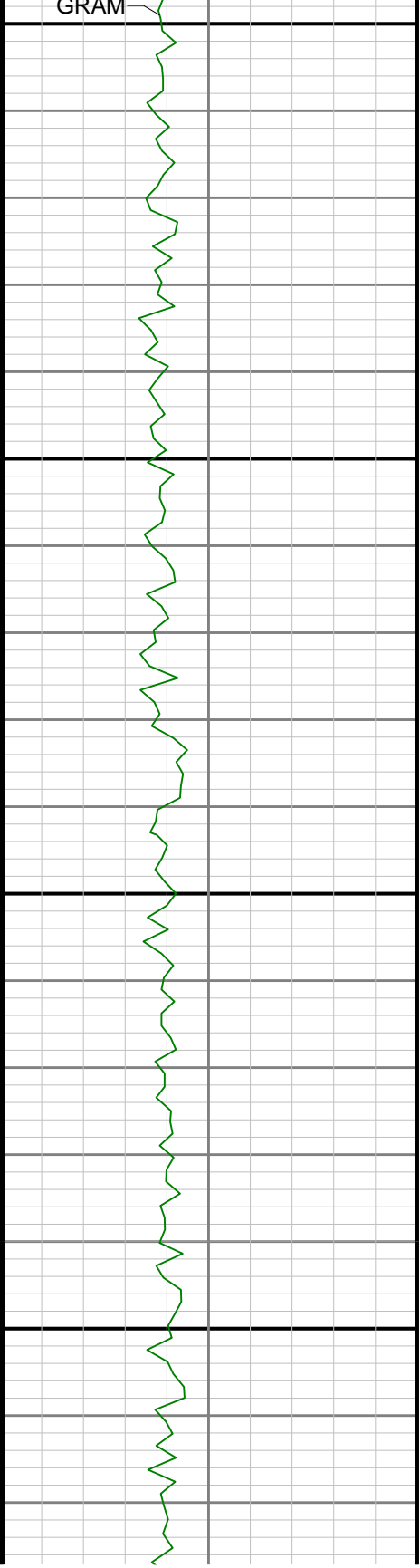
WOBA

TCDM

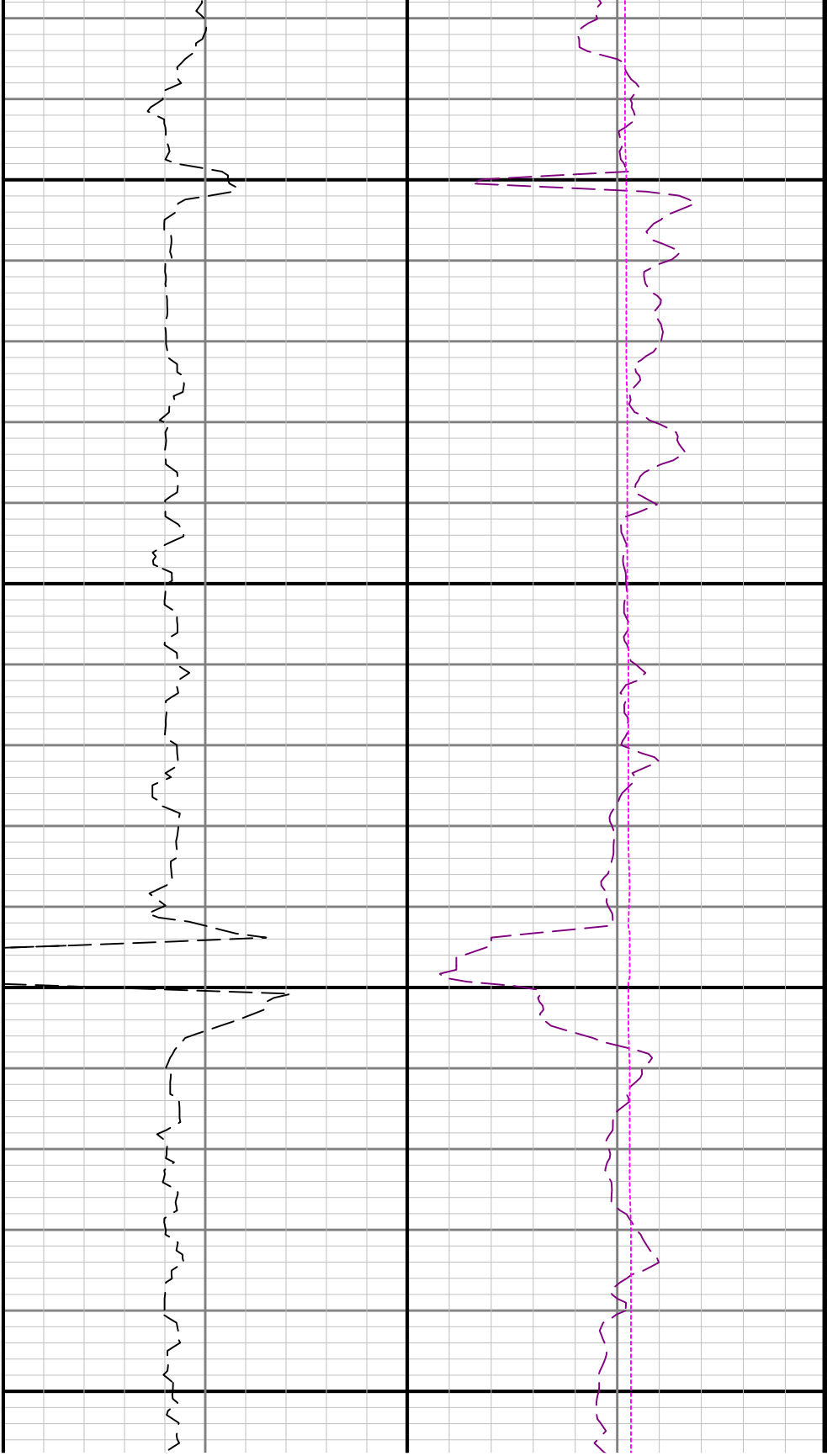


5000

5100

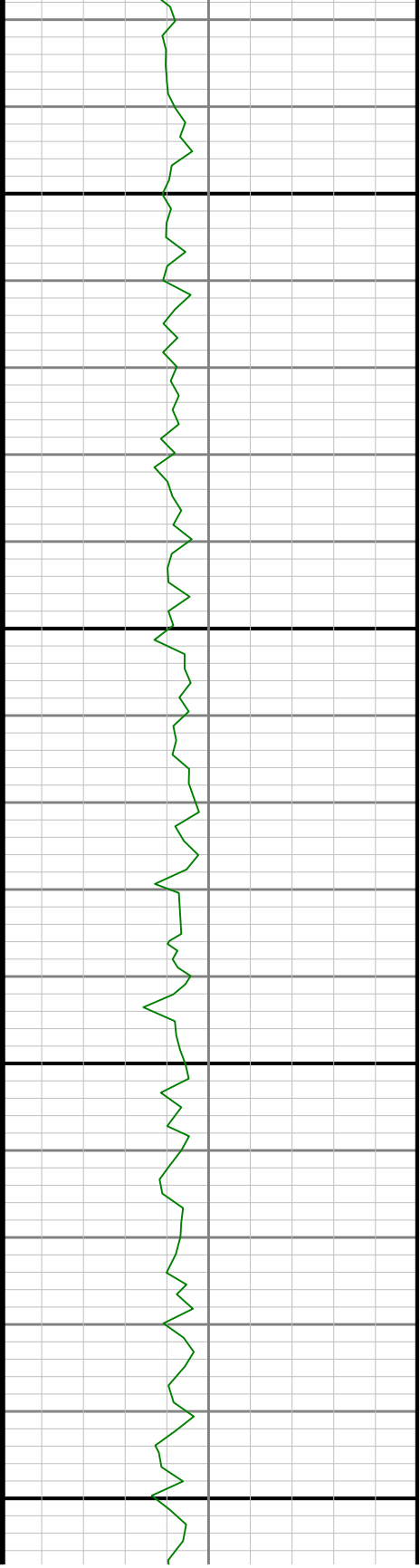


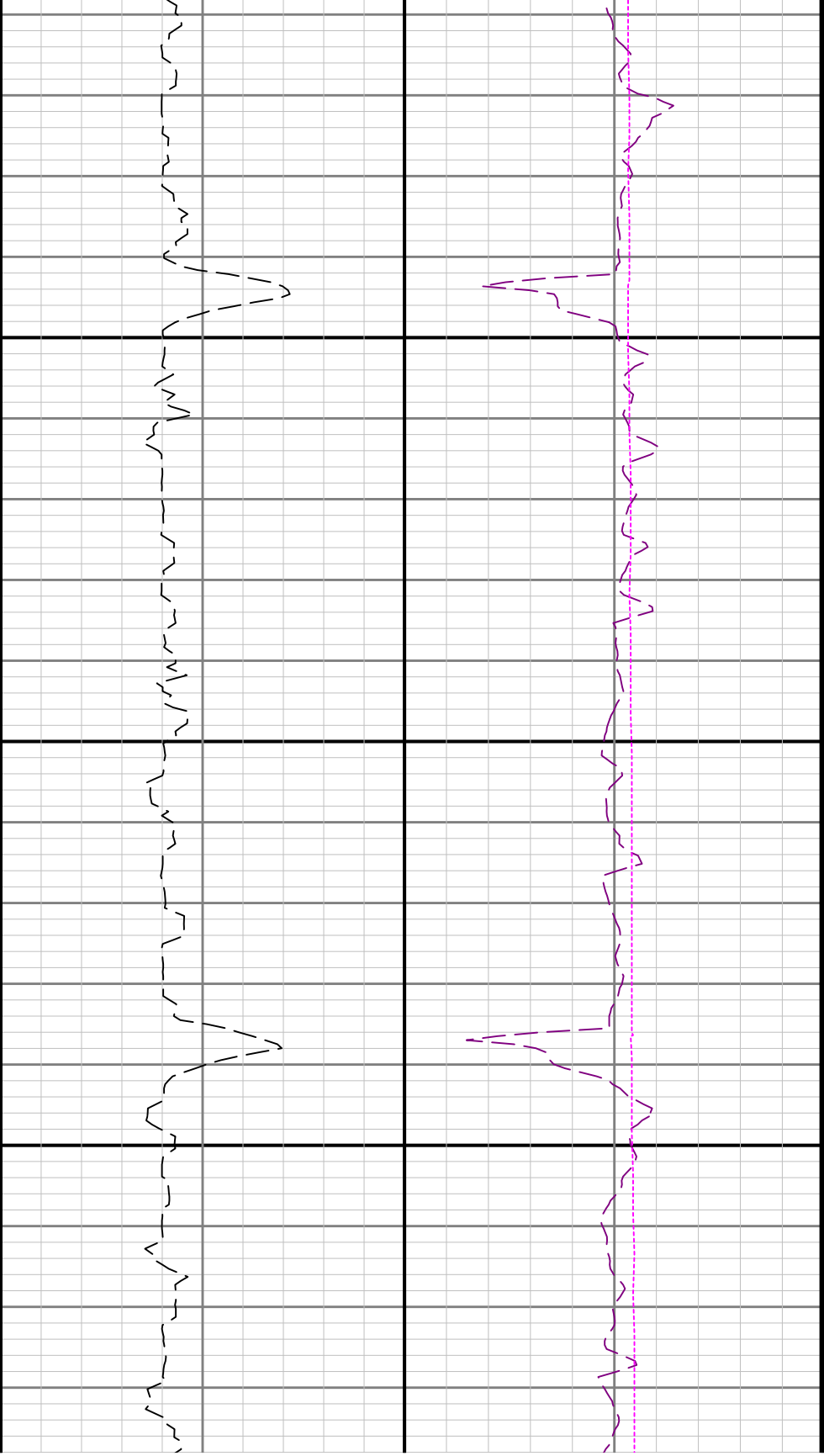
GRAM



5200

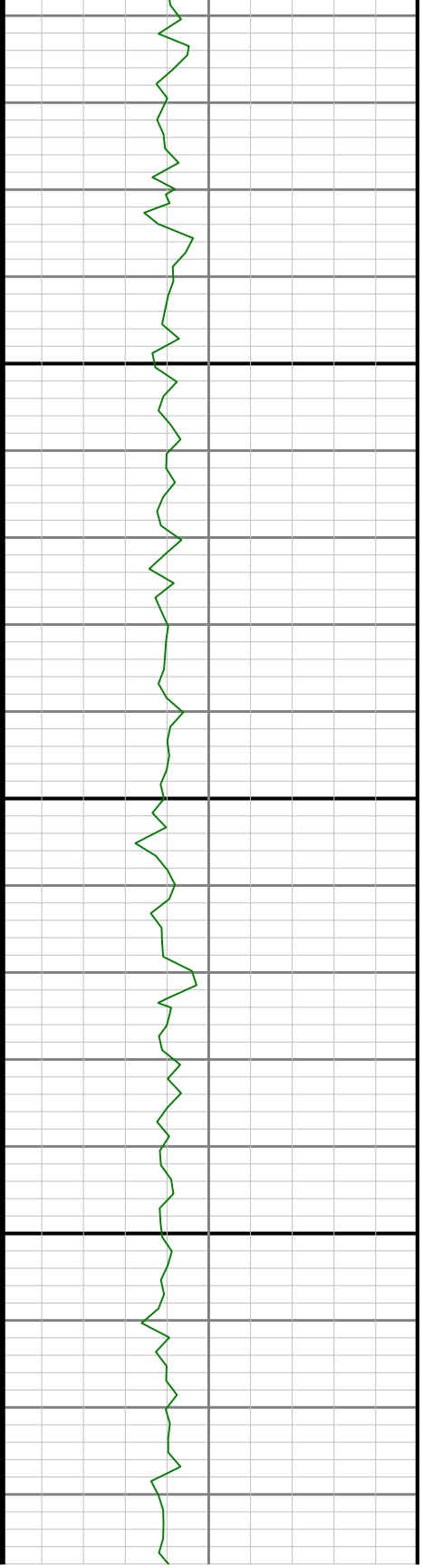
5300

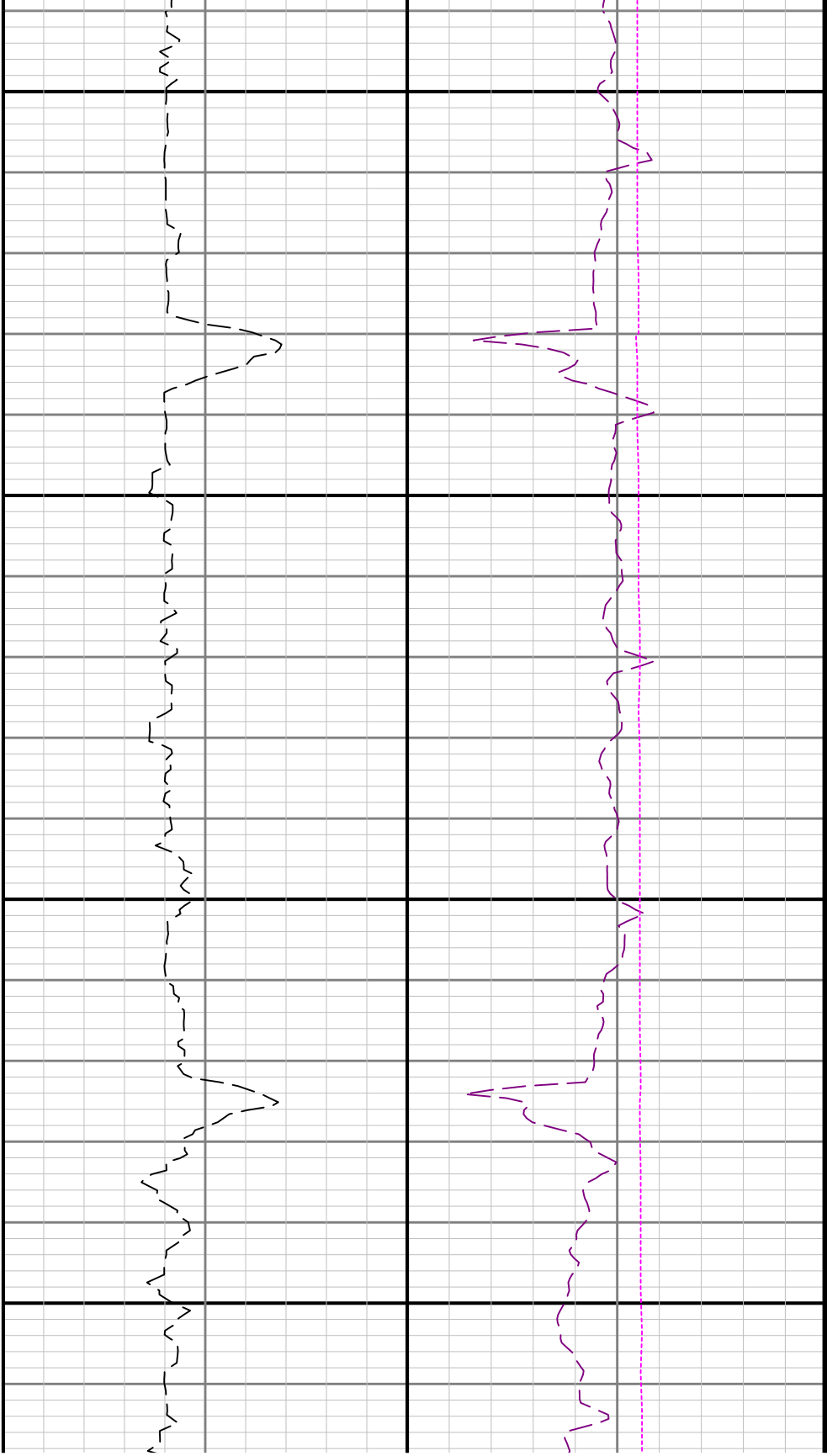




5400

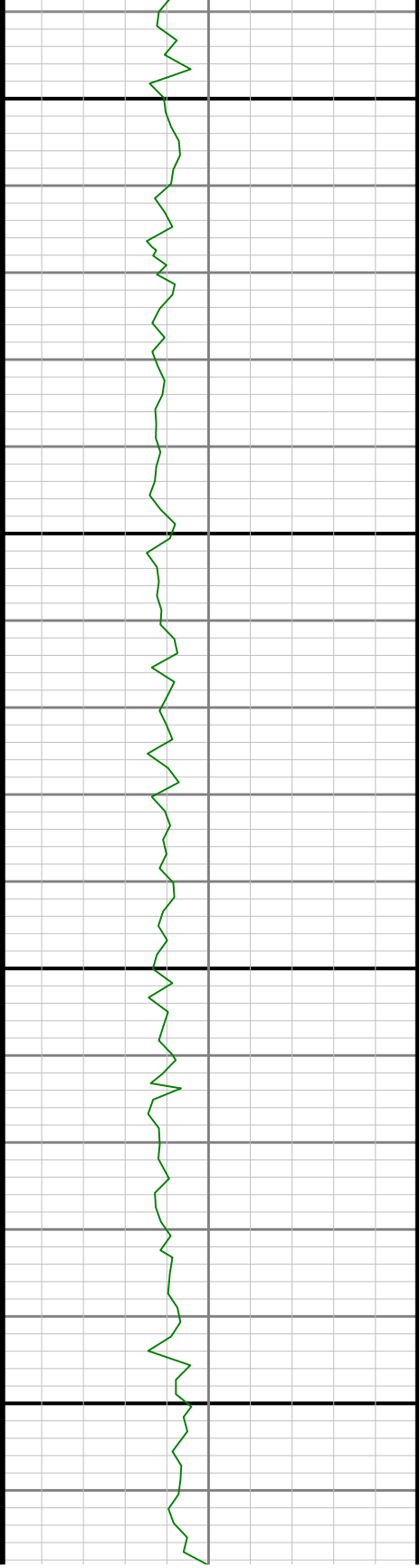
5500

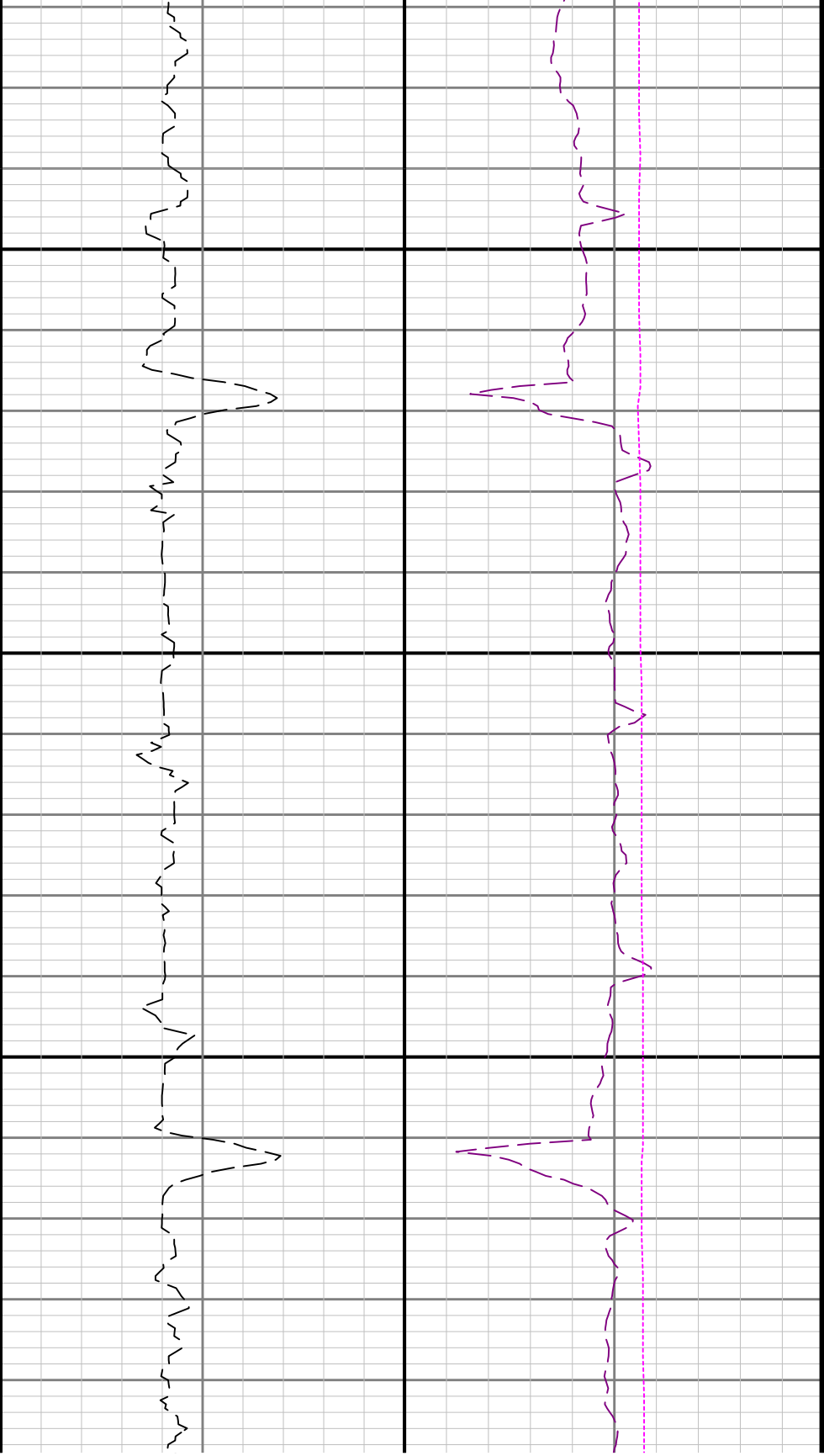




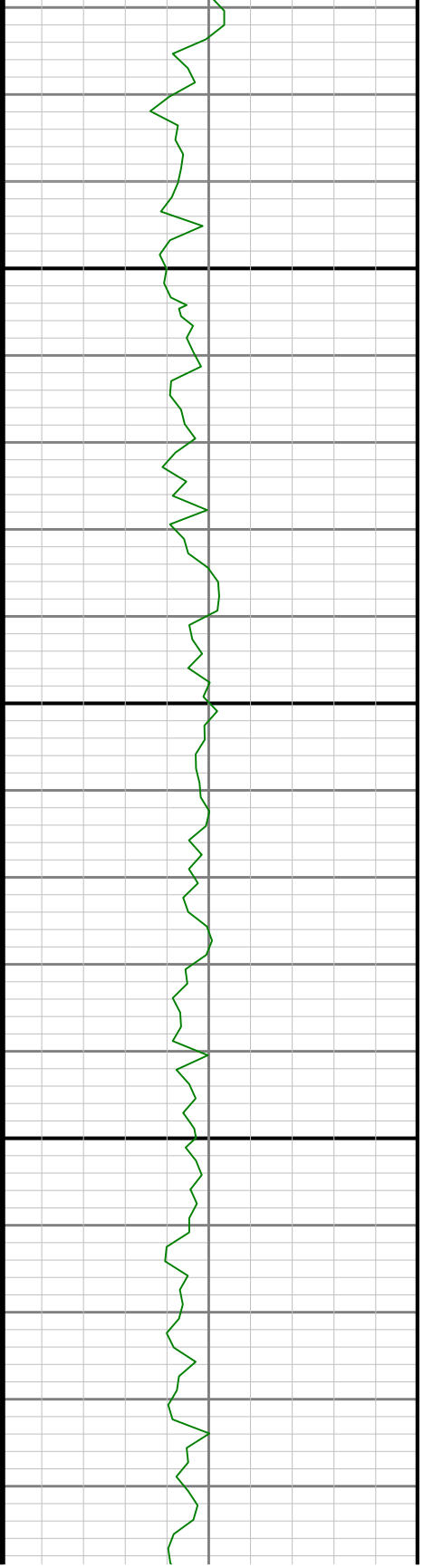
5600

5700

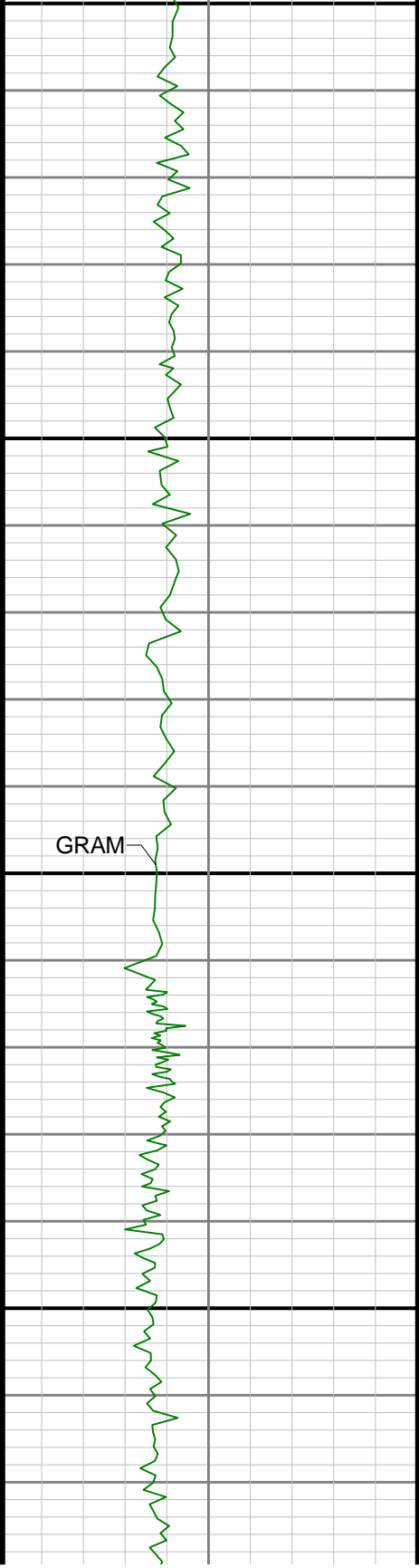




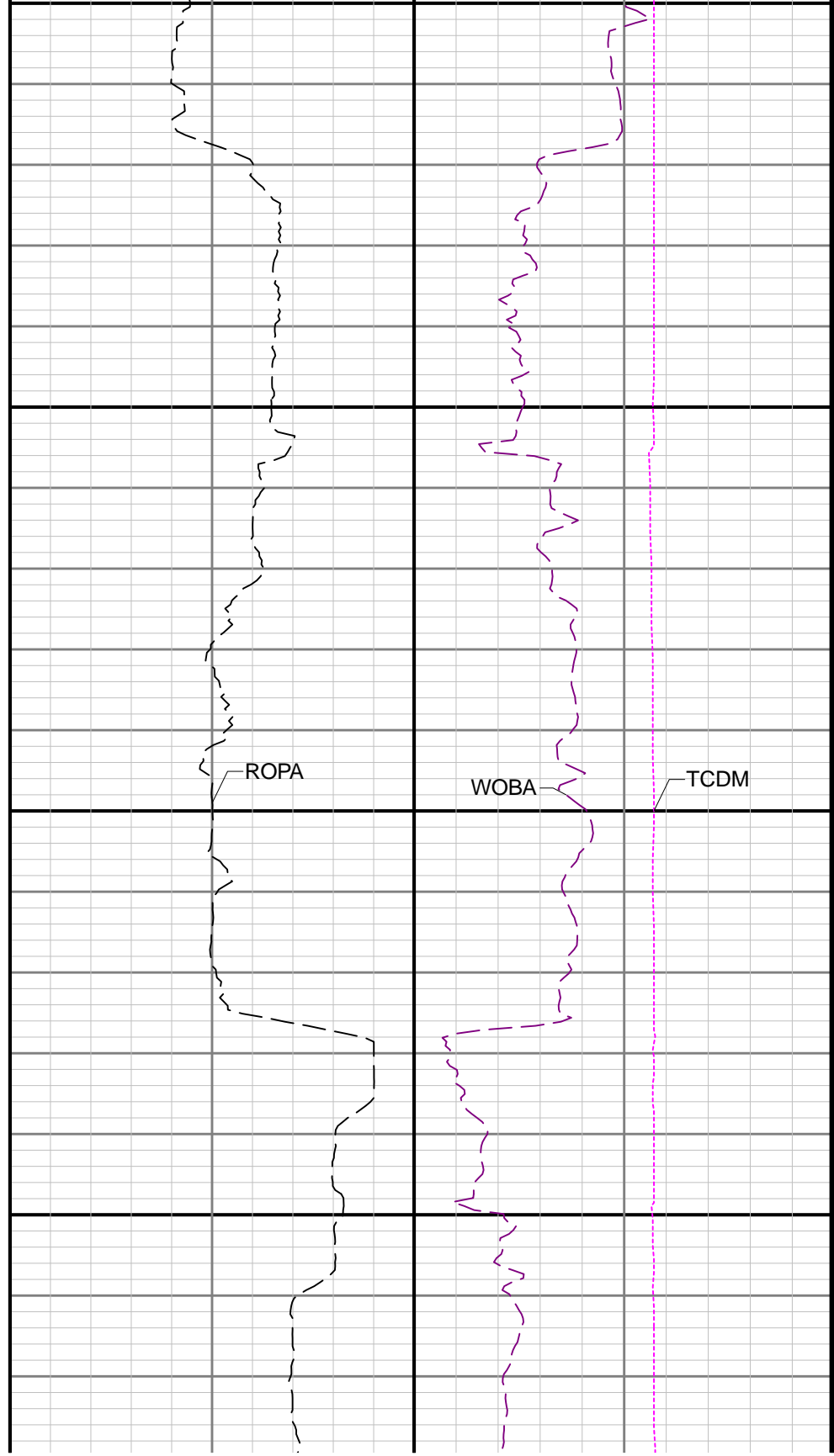
5800

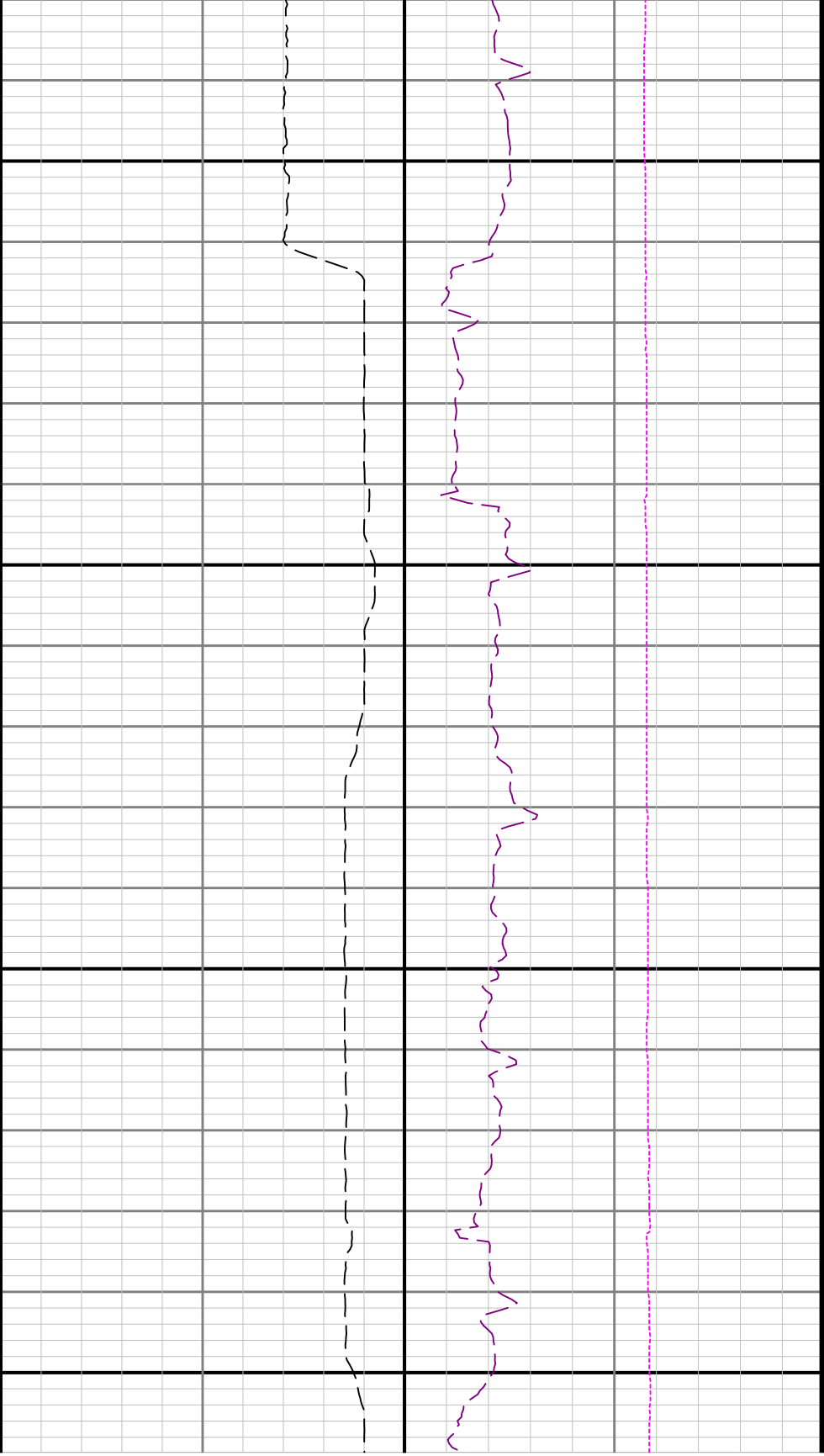


51



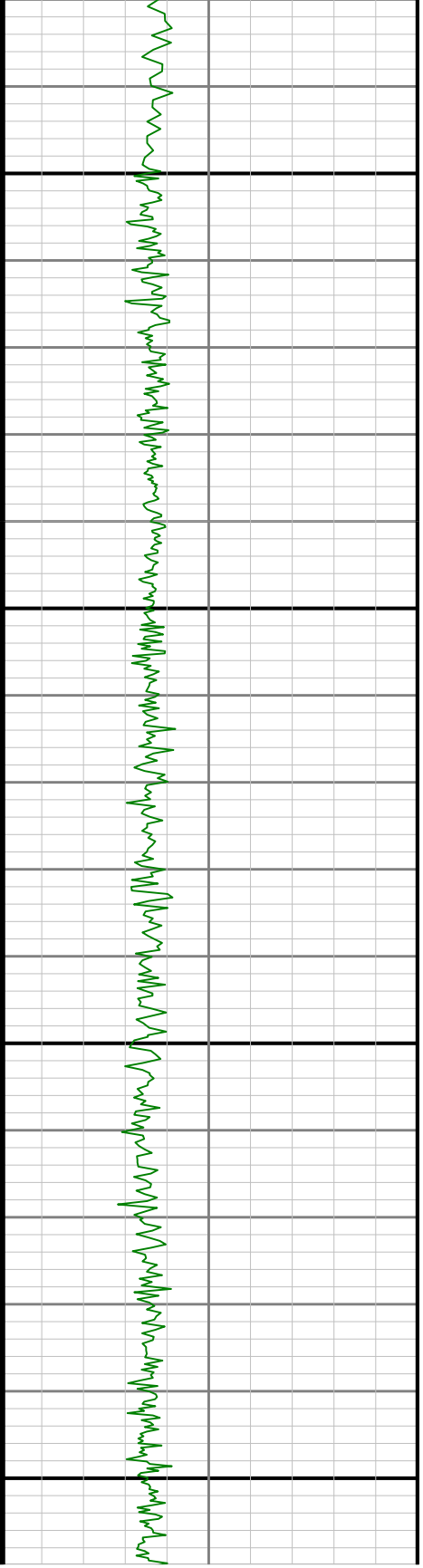
0009 00

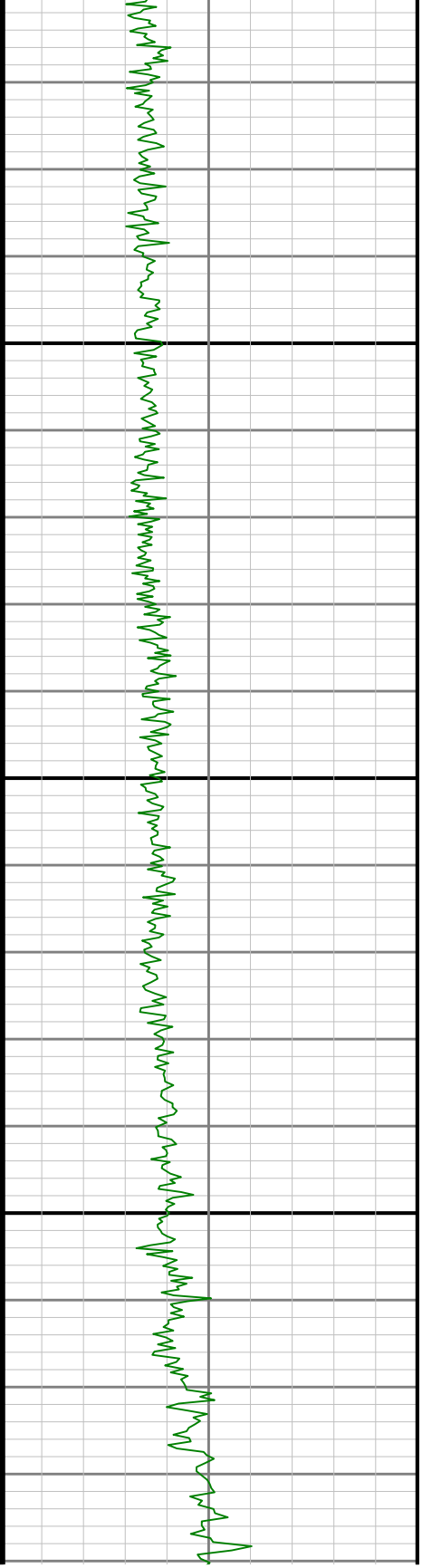
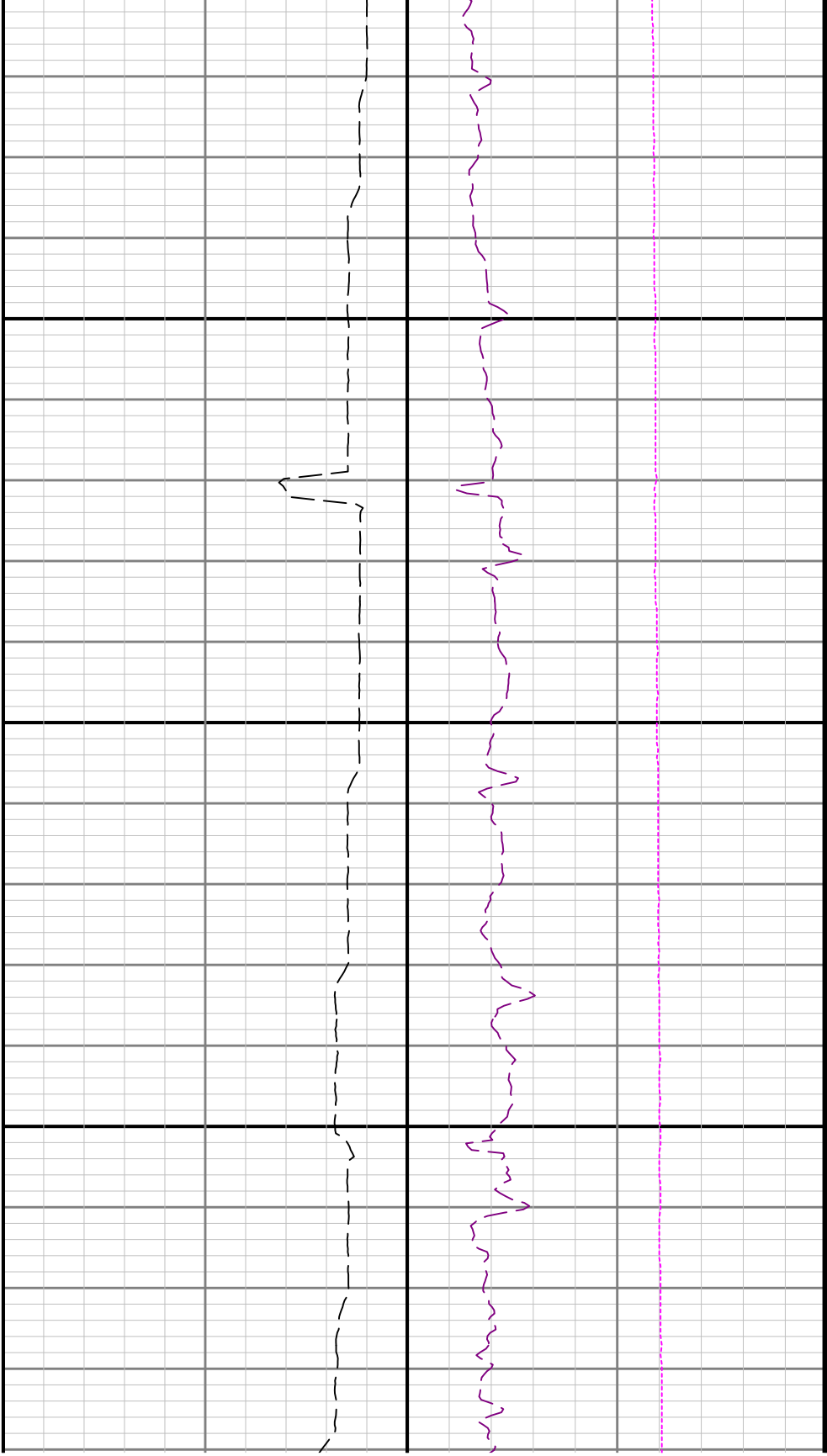


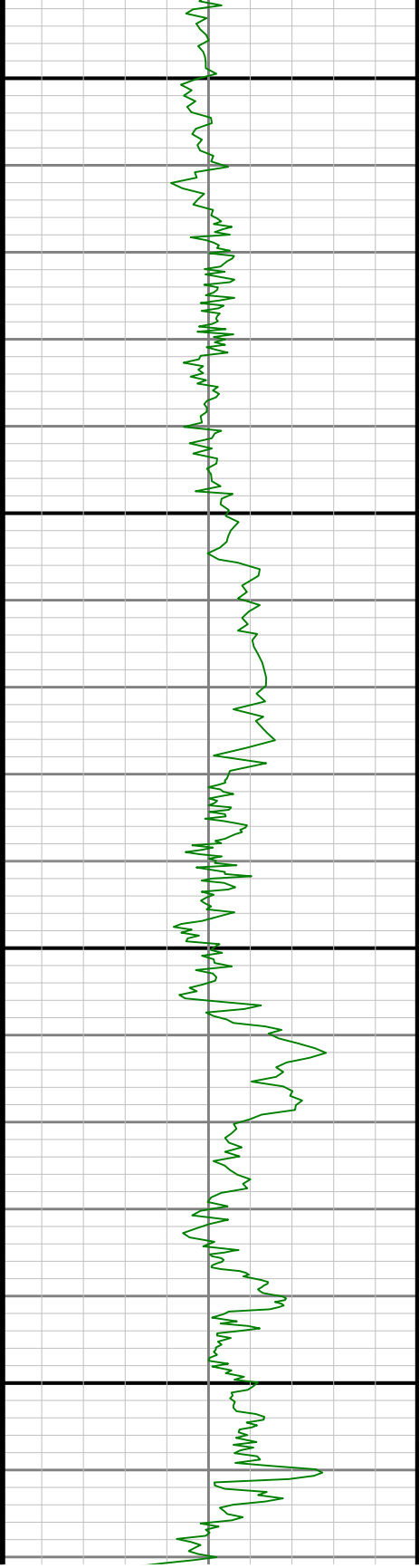


6100

6200

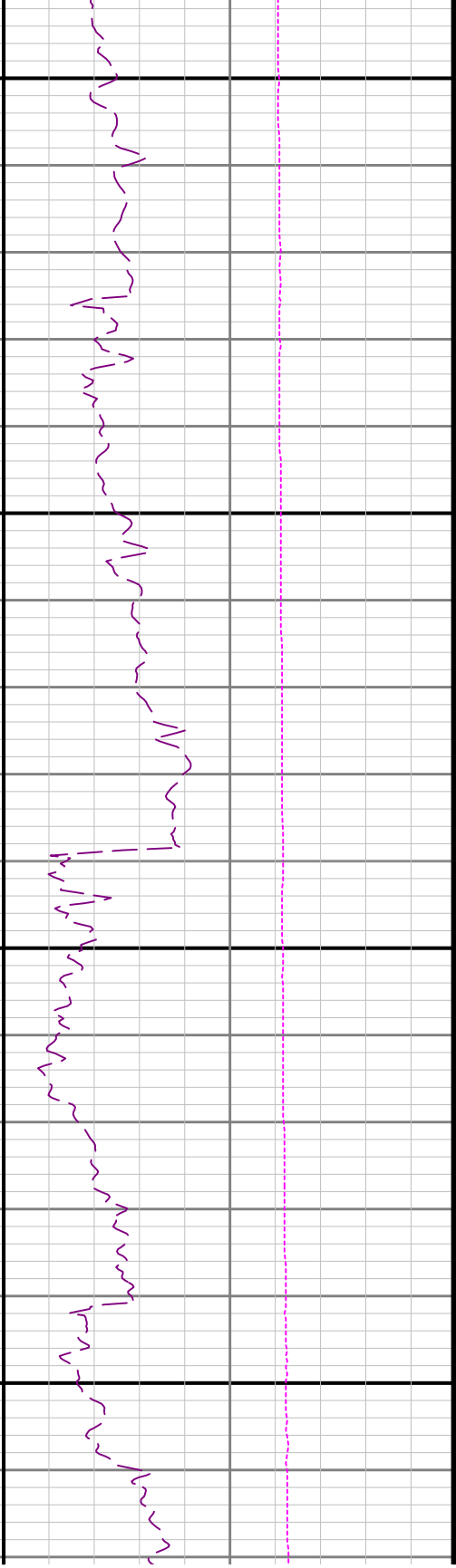
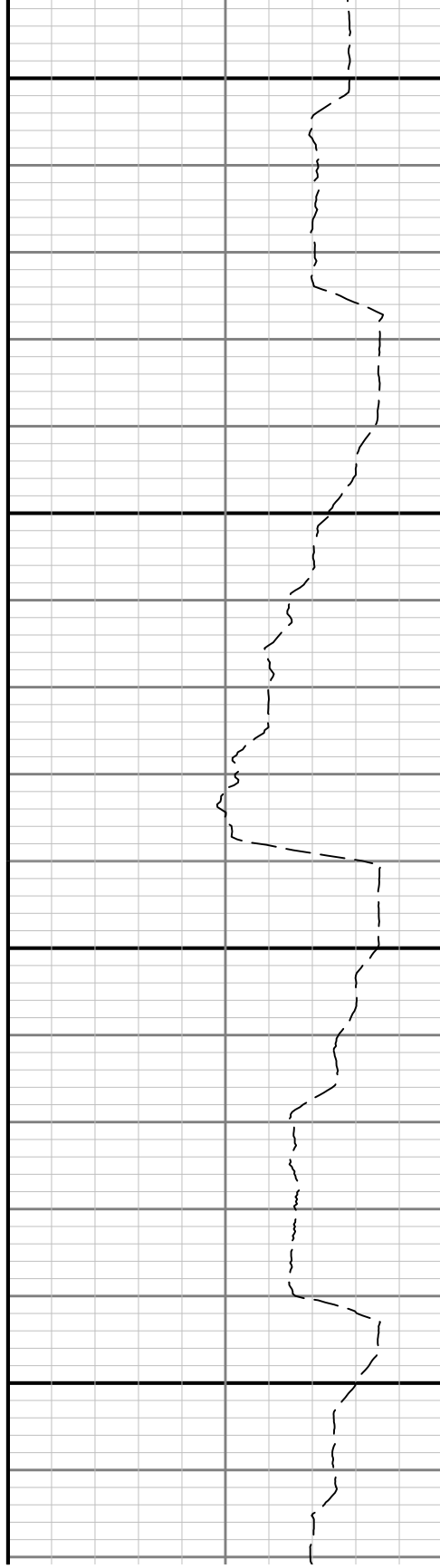


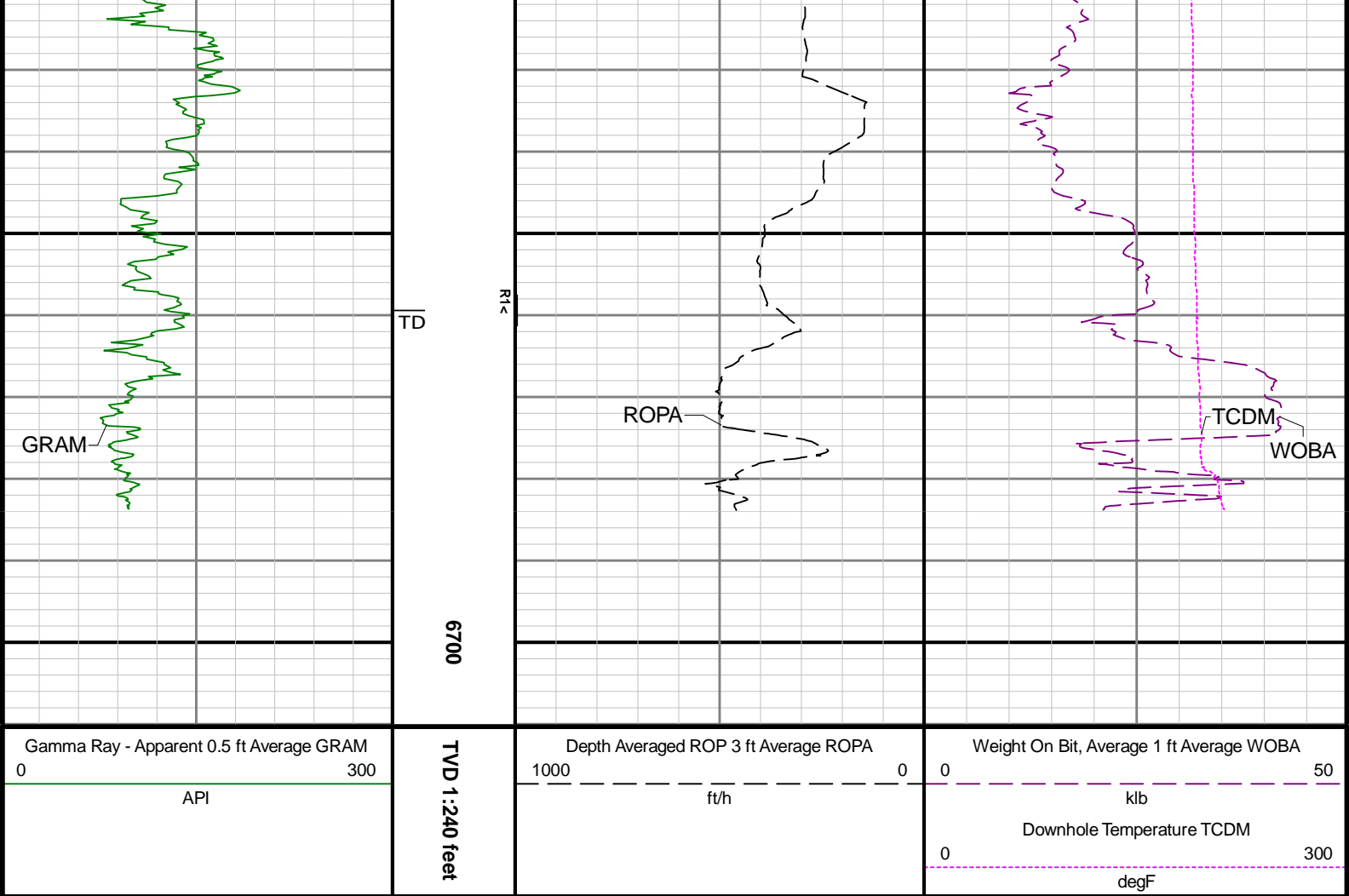




0099

6500





Directional Survey Summary													
Latitude:		40° 15' 46.908" N				Longitude:		104° 32' 01.716" W					
North Reference:		Grid				Drill Depth Zero:		Rig Floor					
Vertical Datum is:		Mean Sea Level				Vertical Datum to DDZ: (ft)		4727.00					
Vertical Section North: (ft)		0.00				Vertical Section East: (ft)		0.00					
Vertical Section Azimuth: (deg)		182.74											
Grid Convergence: (deg)		-0.62				Magnetic Declination: (deg)		7.87					
Total Correction: (deg)		7.25				TVD Calculation Method:		Minimum Curvature					
Magnetic Correction:		Off				Local Magnetic Field: (nT)		51771					
Local Magnetic Dip Angle: (deg)		66.57				Local Gravity Field: (m/s2)		9.800					
Tie-In / Projection	Measured Depth (ft)	Inclination (deg)	Azimuth (deg)	Temperature (degF)	North (ft)	East (ft)	True Vertical Depth (ft)	TVD Subsea (ft)	Vertical Section (ft)	Course Length (ft)	Dog Leg Severity (deg/100ft)	Build Rate (deg/100ft)	Turn Rate (deg/100ft)
Tie-In	0.00	0.00	0.00	N/A	0.00	0.00	0.00	-4727.00	0.00	0.00	0.00	0.00	0.00
	87.07	0.37	303.45	N/A	0.15	-0.23	87.07	-4639.93	-0.14	87.07	0.42	0.42	-64.95
	181.22	0.43	340.06	N/A	0.65	-0.61	181.22	-4545.78	-0.62	94.15	0.27	0.06	38.88
	272.00	0.46	322.77	N/A	1.27	-0.95	271.99	-4455.01	-1.22	90.78	0.15	0.03	-19.05
	366.42	0.42	0.82	N/A	1.91	-1.17	366.41	-4360.59	-1.85	94.42	0.31	-0.04	40.30
	461.07	0.40	321.45	N/A	2.52	-1.37	461.06	-4265.94	-2.45	94.65	0.29	-0.02	-41.60
	555.65	0.71	259.64	N/A	2.67	-2.15	555.64	-4171.36	-2.56	94.58	0.67	0.33	-65.35
	650.38	0.33	181.76	N/A	2.29	-2.74	650.36	-4076.64	-2.16	94.73	0.76	-0.40	-82.21
	745.00	0.24	89.07	N/A	2.02	-2.55	744.98	-3982.02	-1.90	94.62	0.44	-0.10	-97.96

	839.47	0.17	153.27	N/A	1.90	-2.29	839.45	-3887.55	-1.79	94.47	0.24	-0.07	67.96
	934.26	0.17	137.06	N/A	1.67	-2.13	934.24	-3792.76	-1.57	94.79	0.05	0.00	-17.10
	1028.77	0.12	260.80	N/A	1.55	-2.13	1028.75	-3698.25	-1.45	94.51	0.27	-0.05	130.93
	1123.23	0.22	244.85	N/A	1.46	-2.39	1123.21	-3603.79	-1.35	94.46	0.12	0.11	-16.89
	1217.59	0.64	267.79	N/A	1.36	-3.08	1217.57	-3509.43	-1.22	94.36	0.47	0.45	24.31
	1312.12	0.48	312.27	N/A	1.61	-3.90	1312.09	-3414.91	-1.42	94.53	0.48	-0.17	47.05
	1406.28	0.50	326.84	N/A	2.22	-4.42	1406.25	-3320.75	-2.01	94.16	0.13	0.02	15.47
	1500.74	0.61	325.82	N/A	2.98	-4.93	1500.71	-3226.29	-2.74	94.46	0.12	0.12	-1.08
	1595.28	0.30	328.81	N/A	3.61	-5.34	1595.24	-3131.76	-3.35	94.54	0.33	-0.33	3.16
	1689.84	0.48	311.69	N/A	4.08	-5.76	1689.80	-3037.20	-3.80	94.56	0.22	0.19	-18.10
	1784.21	0.58	285.27	N/A	4.47	-6.52	1784.17	-2942.83	-4.16	94.37	0.28	0.11	-28.00
	1878.69	0.36	299.79	N/A	4.75	-7.24	1878.64	-2848.36	-4.39	94.48	0.26	-0.23	15.37
	1943.60	0.13	31.38	N/A	4.91	-7.38	1943.55	-2783.45	-4.55	64.91	0.59	-0.35	141.10
	1987.00	0.21	182.61	98.7	4.87	-7.35	1986.95	-2740.05	-4.52	43.40	0.76	0.18	348.46
	2082.00	2.58	266.17	101.4	4.56	-9.50	2081.92	-2645.08	-4.10	95.00	2.70	2.49	87.96
	2176.00	5.04	263.93	106.8	3.98	-15.71	2175.71	-2551.29	-3.22	94.00	2.62	2.62	-2.38
	2271.00	4.97	264.78	106.8	3.16	-23.96	2270.34	-2456.66	-2.01	95.00	0.11	-0.07	0.89
	2365.00	6.16	264.58	109.5	2.32	-33.04	2363.90	-2363.10	-0.73	94.00	1.27	1.27	-0.21
	2460.00	6.32	264.61	112.2	1.34	-43.32	2458.34	-2268.66	0.73	95.00	0.17	0.17	0.03
	2554.00	6.29	263.24	112.2	0.25	-53.58	2551.77	-2175.23	2.31	94.00	0.16	-0.03	-1.46
	2649.00	5.88	265.00	114.9	-0.79	-63.60	2646.23	-2080.77	3.83	95.00	0.47	-0.43	1.85
	2744.00	6.40	262.12	117.6	-1.94	-73.69	2740.69	-1986.31	5.46	95.00	0.64	0.55	-3.03
	2932.00	6.36	260.37	120.3	-5.11	-94.34	2927.52	-1799.48	9.62	188.00	0.11	-0.02	-0.93
	3027.00	6.61	264.27	125.7	-6.54	-104.96	3021.91	-1705.09	11.55	95.00	0.53	0.26	4.11
	3121.00	6.08	266.68	125.7	-7.37	-115.32	3115.34	-1611.66	12.87	94.00	0.63	-0.56	2.56
	3215.00	6.15	263.93	125.7	-8.19	-125.29	3208.80	-1518.20	14.17	94.00	0.32	0.07	-2.93
	3310.00	6.32	264.31	128.4	-9.25	-135.56	3303.24	-1423.76	15.72	95.00	0.18	0.18	0.40
	3405.00	6.26	265.31	128.4	-10.19	-145.92	3397.67	-1329.33	17.15	95.00	0.13	-0.06	1.05
	3499.00	6.15	265.30	131.1	-11.02	-156.05	3491.12	-1235.88	18.47	94.00	0.12	-0.12	-0.01
	3594.00	6.14	264.49	133.8	-11.92	-166.18	3585.57	-1141.43	19.85	95.00	0.09	-0.01	-0.85
	3688.00	6.25	264.38	133.8	-12.91	-176.27	3679.02	-1047.98	21.32	94.00	0.12	0.12	-0.12
	3783.00	6.48	263.55	136.5	-14.02	-186.75	3773.44	-953.56	22.93	95.00	0.26	0.24	-0.87
	3878.00	6.43	263.67	136.5	-15.21	-197.36	3867.84	-859.16	24.62	95.00	0.05	-0.05	0.13
	3972.00	6.40	263.55	139.2	-16.37	-207.80	3961.25	-765.75	26.29	94.00	0.03	-0.03	-0.13
	4066.00	6.37	263.04	141.9	-17.60	-218.18	4054.67	-672.33	28.00	94.00	0.07	-0.03	-0.54
	4161.00	6.48	265.17	144.6	-18.69	-228.75	4149.07	-577.93	29.60	95.00	0.28	0.12	2.24
	4255.00	6.38	264.98	144.6	-19.59	-239.24	4242.48	-484.52	31.00	94.00	0.11	-0.11	-0.20
	4350.00	6.44	263.86	144.6	-20.62	-249.80	4336.88	-390.12	32.54	95.00	0.15	0.06	-1.18
	4444.00	6.38	264.16	147.3	-21.72	-260.23	4430.30	-296.70	34.13	94.00	0.07	-0.06	0.32
	4539.00	6.33	263.88	150.0	-22.81	-270.69	4524.71	-202.29	35.73	95.00	0.06	-0.05	-0.29
	4633.00	6.48	263.22	150.0	-23.99	-281.11	4618.13	-108.87	37.40	94.00	0.18	0.16	-0.70
	4728.00	6.33	264.93	152.7	-25.09	-291.65	4712.53	-14.47	39.00	95.00	0.26	-0.16	1.80
	4822.00	6.41	264.26	155.4	-26.07	-302.03	4805.95	78.95	40.48	94.00	0.12	0.09	-0.71
	4917.00	6.42	264.12	155.4	-27.14	-312.59	4900.36	173.36	42.05	95.00	0.02	0.01	-0.15
	5011.00	6.34	264.79	155.4	-28.15	-322.99	4993.78	266.78	43.56	94.00	0.12	-0.09	0.71
	5105.00	6.35	264.50	152.7	-29.12	-333.33	5087.20	360.20	45.02	94.00	0.04	0.01	-0.31
	5199.00	6.63	263.98	155.4	-30.19	-343.90	5180.60	453.60	46.59	94.00	0.30	0.30	-0.55
	5294.00	6.71	264.60	158.1	-31.29	-354.88	5274.95	547.95	48.22	95.00	0.11	0.08	0.65
	5389.00	6.72	265.15	160.8	-32.28	-365.95	5369.30	642.30	49.74	95.00	0.07	0.01	0.58
	5483.00	6.74	265.65	160.8	-33.16	-376.93	5462.65	735.65	51.14	94.00	0.07	0.02	0.53
	5577.00	6.91	266.30	163.5	-33.95	-388.07	5555.99	828.99	52.46	94.00	0.20	0.18	0.69
	5672.00	6.92	266.34	166.2	-34.68	-399.48	5650.30	923.30	53.74	95.00	0.01	0.01	0.04
	5766.00	6.99	265.25	168.9	-35.51	-410.83	5743.61	1016.61	55.11	94.00	0.16	0.07	-1.16
	5861.00	6.91	265.61	168.9	-36.43	-422.29	5837.91	1110.91	56.58	95.00	0.10	-0.08	0.38
	5956.00	6.86	265.64	168.9	-37.30	-433.65	5932.22	1205.22	57.99	95.00	0.05	-0.05	0.03
	6050.00	7.02	219.54	171.6	-42.16	-442.91	6025.60	1298.60	63.28	94.00	5.77	0.17	-49.04
	6145.00	8.99	203.24	171.6	-53.46	-449.54	6119.69	1392.69	74.89	95.00	3.14	2.07	-17.16
	6239.00	16.27	202.21	174.3	-72.42	-457.42	6211.35	1484.35	94.21	94.00	7.75	7.74	-1.10
	6333.00	24.24	196.20	177.0	-103.20	-467.80	6299.47	1572.47	125.44	94.00	8.75	8.48	-6.39
	6428.00	32.60	194.88	179.7	-146.74	-479.83	6382.95	1655.95	169.51	95.00	8.82	8.80	-1.39

	6522.00	41.30	189.81	182.5	-201.89	-491.65	6458.02	1731.02	225.17	94.00	9.80	9.26	-5.39
	6617.00	50.12	188.17	185.2	-269.00	-502.19	6524.29	1797.29	292.70	95.00	9.37	9.28	-1.73
	6711.00	58.04	186.41	185.2	-344.45	-511.78	6579.40	1852.40	368.53	94.00	8.56	8.43	-1.87
	6806.00	66.20	183.63	187.9	-428.03	-519.05	6623.79	1896.79	452.35	95.00	8.97	8.59	-2.93
	6900.00	75.02	182.70	190.6	-516.48	-523.92	6654.97	1927.97	540.93	94.00	9.43	9.38	-0.99
	6994.00	83.12	182.63	196.0	-608.59	-528.21	6672.78	1945.78	633.15	94.00	8.62	8.62	-0.07
	7089.00	89.91	182.14	196.0	-703.28	-532.15	6678.55	1951.55	727.91	95.00	7.17	7.15	-0.52
	7183.00	89.66	181.39	198.7	-797.23	-535.04	6678.90	1951.90	821.90	94.00	0.84	-0.27	-0.80
	7278.00	90.15	181.14	201.4	-892.21	-537.14	6679.06	1952.06	916.87	95.00	0.58	0.52	-0.26
	7372.00	89.45	181.81	204.1	-986.18	-539.56	6679.39	1952.39	1010.84	94.00	1.03	-0.74	0.71
	7467.00	89.01	181.37	209.5	-1081.13	-542.20	6680.66	1953.66	1105.81	95.00	0.65	-0.46	-0.46
	7561.00	88.77	180.19	209.5	-1175.10	-543.48	6682.48	1955.48	1199.74	94.00	1.28	-0.26	-1.26
	7656.00	89.75	180.51	209.5	-1270.09	-544.06	6683.71	1956.71	1294.65	95.00	1.09	1.03	0.34
	7750.00	90.15	180.99	209.5	-1364.08	-545.29	6683.79	1956.79	1388.59	94.00	0.66	0.43	0.51
	7845.00	90.71	180.46	212.2	-1459.07	-546.49	6683.08	1956.08	1483.53	95.00	0.81	0.59	-0.56
	7939.00	90.34	180.99	214.9	-1553.06	-547.68	6682.22	1955.22	1577.47	94.00	0.69	-0.39	0.56
	8034.00	90.71	180.63	212.2	-1648.05	-549.02	6681.35	1954.35	1672.41	95.00	0.54	0.39	-0.38
	8129.00	89.94	180.32	214.9	-1743.04	-549.81	6680.81	1953.81	1767.33	95.00	0.87	-0.81	-0.33
	8223.00	90.00	180.72	214.9	-1837.04	-550.66	6680.86	1953.86	1861.26	94.00	0.43	0.06	0.43
	8318.00	90.28	179.90	214.9	-1932.04	-551.18	6680.63	1953.63	1956.17	95.00	0.91	0.29	-0.86
	8412.00	90.62	180.65	217.6	-2026.03	-551.63	6679.89	1952.89	2050.08	94.00	0.88	0.36	0.80
	8506.00	90.28	180.86	220.3	-2120.02	-552.87	6679.15	1952.15	2144.02	94.00	0.43	-0.36	0.22
	8601.00	90.22	180.21	220.3	-2215.01	-553.75	6678.74	1951.74	2238.95	95.00	0.69	-0.06	-0.68
	8695.00	90.15	180.97	223.0	-2309.01	-554.72	6678.43	1951.43	2332.89	94.00	0.81	-0.07	0.81
	8790.00	90.68	180.79	225.7	-2403.99	-556.18	6677.74	1950.74	2427.83	95.00	0.59	0.56	-0.19
	8885.00	90.31	180.77	225.7	-2498.98	-557.47	6676.92	1949.92	2522.77	95.00	0.39	-0.39	-0.02
	8979.00	91.08	180.97	228.4	-2592.96	-558.90	6675.78	1948.78	2616.72	94.00	0.85	0.82	0.21
	9074.00	90.55	180.28	231.1	-2687.95	-559.94	6674.43	1947.43	2711.64	95.00	0.92	-0.56	-0.73
	9168.00	90.86	180.15	228.4	-2781.94	-560.29	6673.28	1946.28	2805.54	94.00	0.36	0.33	-0.14
	9357.00	91.66	179.45	228.4	-2970.89	-559.63	6669.12	1942.12	2994.24	189.00	0.56	0.42	-0.37
	9451.00	89.51	179.72	231.1	-3064.88	-558.95	6668.16	1941.16	3088.09	94.00	2.31	-2.29	0.29
	9546.00	89.32	179.76	233.8	-3159.87	-558.52	6669.13	1942.13	3182.96	95.00	0.20	-0.20	0.04
	9640.00	89.38	179.99	233.8	-3253.86	-558.31	6670.20	1943.20	3276.83	94.00	0.25	0.06	0.24
	9735.00	89.26	180.15	236.5	-3348.86	-558.43	6671.32	1944.32	3371.72	95.00	0.21	-0.13	0.17
	9829.00	89.17	180.29	236.5	-3442.85	-558.79	6672.61	1945.61	3465.62	94.00	0.18	-0.10	0.15
	9923.00	89.54	180.11	239.2	-3536.84	-559.12	6673.67	1946.67	3559.52	94.00	0.44	0.39	-0.19
	10018.00	89.38	179.92	239.2	-3631.84	-559.14	6674.56	1947.56	3654.41	95.00	0.26	-0.17	-0.20
	10112.00	89.45	178.87	241.9	-3725.82	-558.15	6675.52	1948.52	3748.25	94.00	1.12	0.07	-1.12
	10206.00	89.69	180.08	241.9	-3819.82	-557.29	6676.23	1949.23	3842.09	94.00	1.31	0.26	1.29
	10301.00	89.14	179.81	241.9	-3914.81	-557.20	6677.20	1950.20	3936.97	95.00	0.64	-0.58	-0.28
	10395.00	89.91	180.27	241.9	-4008.81	-557.26	6677.98	1950.98	4030.86	94.00	0.95	0.82	0.49
	10490.00	89.97	180.19	244.6	-4103.81	-557.64	6678.08	1951.08	4125.77	95.00	0.11	0.06	-0.08
	10584.00	90.18	179.56	244.6	-4197.80	-557.44	6677.96	1950.96	4219.65	94.00	0.71	0.22	-0.67
	10679.00	90.43	179.57	247.3	-4292.80	-556.72	6677.45	1950.45	4314.51	95.00	0.26	0.26	0.01
	10774.00	90.15	180.42	247.3	-4387.80	-556.71	6676.97	1949.97	4409.39	95.00	0.94	-0.29	0.89
	10868.00	89.88	180.27	247.3	-4481.79	-557.28	6676.94	1949.94	4503.31	94.00	0.33	-0.29	-0.16
	10963.00	89.78	179.88	250.0	-4576.80	-557.40	6677.23	1950.23	4598.21	95.00	0.42	-0.11	-0.41
	11057.00	90.22	180.41	250.0	-4670.79	-557.64	6677.23	1950.23	4692.11	94.00	0.73	0.47	0.56
	11152.00	89.88	180.46	250.0	-4765.79	-558.36	6677.14	1950.14	4787.04	95.00	0.36	-0.36	0.05
	11246.00	89.88	179.26	250.0	-4859.79	-558.13	6677.34	1950.34	4880.91	94.00	1.28	-0.00	-1.28
	11341.00	90.00	179.17	250.0	-4954.78	-556.83	6677.44	1950.44	4975.73	95.00	0.16	0.13	-0.09
	11436.00	90.37	178.96	250.0	-5049.77	-555.28	6677.13	1950.13	5070.54	95.00	0.45	0.39	-0.22
	11530.00	90.95	179.36	252.7	-5143.75	-553.90	6676.05	1949.05	5164.35	94.00	0.75	0.62	0.43
	11625.00	90.12	179.06	252.7	-5238.74	-552.59	6675.16	1948.16	5259.16	95.00	0.93	-0.87	-0.32
	11719.00	90.22	177.94	255.4	-5332.70	-550.13	6674.88	1947.88	5352.90	94.00	1.20	0.11	-1.19
	11814.00	90.31	178.69	255.4	-5427.66	-547.34	6674.44	1947.44	5447.62	95.00	0.80	0.09	0.79
	11908.00	90.40	179.08	255.4	-5521.64	-545.51	6673.86	1946.86	5541.40	94.00	0.43	0.10	0.41
	12097.00	89.97	179.82	255.4	-5710.63	-543.69	6673.25	1946.25	5730.09	189.00	0.45	-0.23	0.39
	12192.00	90.00	180.18	258.1	-5805.63	-543.69	6673.28	1946.28	5824.98	95.00	0.38	0.03	0.38
	12287.00	89.54	179.80	252.7	-5900.63	-543.68	6673.66	1946.66	5919.87	95.00	0.63	-0.48	-0.40

	12381.00	90.34	178.35	252.7	-5994.61	-542.16	6673.76	1946.76	6013.68	94.00	1.76	0.85	-1.54
	12476.00	90.37	181.02	255.4	-6089.60	-541.64	6673.17	1946.17	6108.53	95.00	2.81	0.03	2.81
	12570.00	90.03	180.01	258.1	-6183.59	-542.48	6672.84	1945.84	6202.46	94.00	1.13	-0.36	-1.07
	12665.00	90.09	179.92	258.1	-6278.59	-542.42	6672.74	1945.74	6297.35	95.00	0.11	0.06	-0.09
	12760.00	90.09	180.08	258.1	-6373.59	-542.42	6672.59	1945.59	6392.24	95.00	0.17	0.00	0.17
	12854.00	89.97	179.93	260.8	-6467.59	-542.43	6672.54	1945.54	6486.13	94.00	0.20	-0.13	-0.16
	12949.00	89.85	179.14	260.8	-6562.59	-541.66	6672.69	1945.69	6580.98	95.00	0.84	-0.13	-0.83
	13044.00	89.88	178.10	260.8	-6657.56	-539.37	6672.92	1945.92	6675.73	95.00	1.10	0.03	-1.09
	13138.00	90.16	179.45	260.8	-6751.54	-537.36	6672.88	1945.88	6769.51	94.00	1.47	0.30	1.44
	13233.00	90.25	179.75	260.8	-6846.53	-536.70	6672.54	1945.54	6864.36	95.00	0.33	0.09	0.32
	13327.00	89.91	179.56	263.5	-6940.53	-536.13	6672.41	1945.41	6958.23	94.00	0.41	-0.36	-0.20
	13422.00	90.10	179.73	263.5	-7035.53	-535.54	6672.40	1945.40	7053.09	95.00	0.27	0.20	0.18
	13516.00	90.28	179.53	263.5	-7129.53	-534.94	6672.09	1945.09	7146.95	94.00	0.29	0.19	-0.21
	13611.00	90.22	179.36	263.5	-7224.52	-534.02	6671.68	1944.68	7241.79	95.00	0.19	-0.06	-0.18
	13706.00	90.01	179.51	263.5	-7319.52	-533.08	6671.49	1944.49	7336.63	95.00	0.27	-0.22	0.16
	13800.00	90.16	178.99	263.5	-7413.51	-531.85	6671.35	1944.35	7430.46	94.00	0.58	0.16	-0.55
	13895.00	89.27	178.27	263.5	-7508.48	-529.58	6671.82	1944.82	7525.21	95.00	1.21	-0.94	-0.76
	13989.00	89.11	177.43	263.5	-7602.40	-526.05	6673.15	1946.15	7618.86	94.00	0.91	-0.17	-0.89
	14178.00	90.22	180.79	263.5	-7791.35	-523.12	6674.25	1947.25	7807.45	189.00	1.87	0.59	1.78
	14273.00	90.22	180.45	263.5	-7886.34	-524.15	6673.89	1946.89	7902.38	95.00	0.36	0.00	-0.36
	14368.00	90.37	180.30	263.5	-7981.34	-524.77	6673.40	1946.40	7997.30	95.00	0.22	0.16	-0.16
	14462.00	89.67	179.69	263.5	-8075.34	-524.76	6673.37	1946.37	8091.19	94.00	0.99	-0.74	-0.65
	14557.00	90.19	180.05	260.8	-8170.33	-524.54	6673.48	1946.48	8186.07	95.00	0.67	0.55	0.38
	14651.00	90.01	179.23	252.7	-8264.33	-523.95	6673.32	1946.32	8279.93	94.00	0.89	-0.19	-0.87
	14746.00	90.44	181.71	255.4	-8359.32	-524.73	6672.95	1945.95	8374.85	95.00	2.65	0.45	2.61
	14841.00	90.13	180.91	258.1	-8454.29	-526.90	6672.47	1945.47	8469.82	95.00	0.90	-0.33	-0.84
	14935.00	90.10	180.71	260.8	-8548.28	-528.23	6672.28	1945.28	8563.76	94.00	0.22	-0.03	-0.21
	15030.00	90.47	180.42	260.8	-8643.28	-529.17	6671.81	1944.81	8658.69	95.00	0.49	0.39	-0.31
	15125.00	90.25	180.38	263.5	-8738.27	-529.83	6671.21	1944.21	8753.61	95.00	0.24	-0.23	-0.04
	15219.00	90.31	180.49	263.5	-8832.27	-530.55	6670.76	1943.76	8847.53	94.00	0.13	0.06	0.12
	15314.00	90.28	179.90	266.2	-8927.27	-530.87	6670.27	1943.27	8942.44	95.00	0.62	-0.03	-0.62
	15409.00	90.01	179.98	266.2	-9022.27	-530.77	6670.03	1943.03	9037.32	95.00	0.30	-0.28	0.08
	15503.00	90.25	180.29	266.2	-9116.27	-530.99	6669.81	1942.81	9131.23	94.00	0.42	0.26	0.33
	15598.00	90.37	180.23	269.0	-9211.26	-531.42	6669.30	1942.30	9226.14	95.00	0.14	0.13	-0.06
	15692.00	90.16	180.47	266.2	-9305.26	-532.00	6668.86	1941.86	9320.05	94.00	0.34	-0.22	0.26
	15786.00	90.53	180.11	269.0	-9399.26	-532.47	6668.30	1941.30	9413.97	94.00	0.55	0.39	-0.38
	15881.00	90.16	179.81	269.0	-9494.26	-532.41	6667.73	1940.73	9508.85	95.00	0.50	-0.39	-0.32
	15975.00	90.37	180.05	266.2	-9588.25	-532.29	6667.29	1940.29	9602.74	94.00	0.34	0.22	0.26
	16164.00	90.22	180.07	269.0	-9777.25	-532.49	6666.32	1939.32	9791.53	189.00	0.08	-0.08	0.01
	16259.00	90.22	179.84	269.0	-9872.25	-532.42	6665.95	1938.95	9886.42	95.00	0.24	0.00	-0.24
	16353.00	90.28	179.98	271.7	-9966.25	-532.27	6665.54	1938.54	9980.30	94.00	0.16	0.06	0.15
	16447.00	90.50	179.50	271.7	-10060.25	-531.84	6664.90	1937.90	10074.17	94.00	0.56	0.23	-0.51
	16542.00	90.25	179.87	271.7	-10155.24	-531.32	6664.28	1937.28	10169.03	95.00	0.47	-0.26	0.39
	16636.00	90.41	179.56	271.7	-10249.24	-530.85	6663.74	1936.74	10262.90	94.00	0.37	0.17	-0.33
	16730.00	90.53	179.70	271.7	-10343.23	-530.24	6662.97	1935.97	10356.76	94.00	0.20	0.13	0.15
	16825.00	90.19	179.49	271.7	-10438.23	-529.57	6662.37	1935.37	10451.61	95.00	0.42	-0.36	-0.22
	16919.00	90.47	179.70	271.7	-10532.23	-528.91	6661.83	1934.83	10545.47	94.00	0.37	0.30	0.22
	17014.00	90.31	179.91	271.7	-10627.22	-528.59	6661.18	1934.18	10640.34	95.00	0.28	-0.17	0.22
	17108.00	90.31	179.64	274.4	-10721.22	-528.22	6660.68	1933.68	10734.21	94.00	0.29	0.00	-0.29
	17203.00	90.37	179.30	269.0	-10816.22	-527.34	6660.11	1933.11	10829.06	95.00	0.36	0.06	-0.36
Projection	17252.00	90.37	179.30	N/A	-10865.21	-526.74	6659.80	1932.80	10877.97	49.00	0.00	-0.00	-0.00