

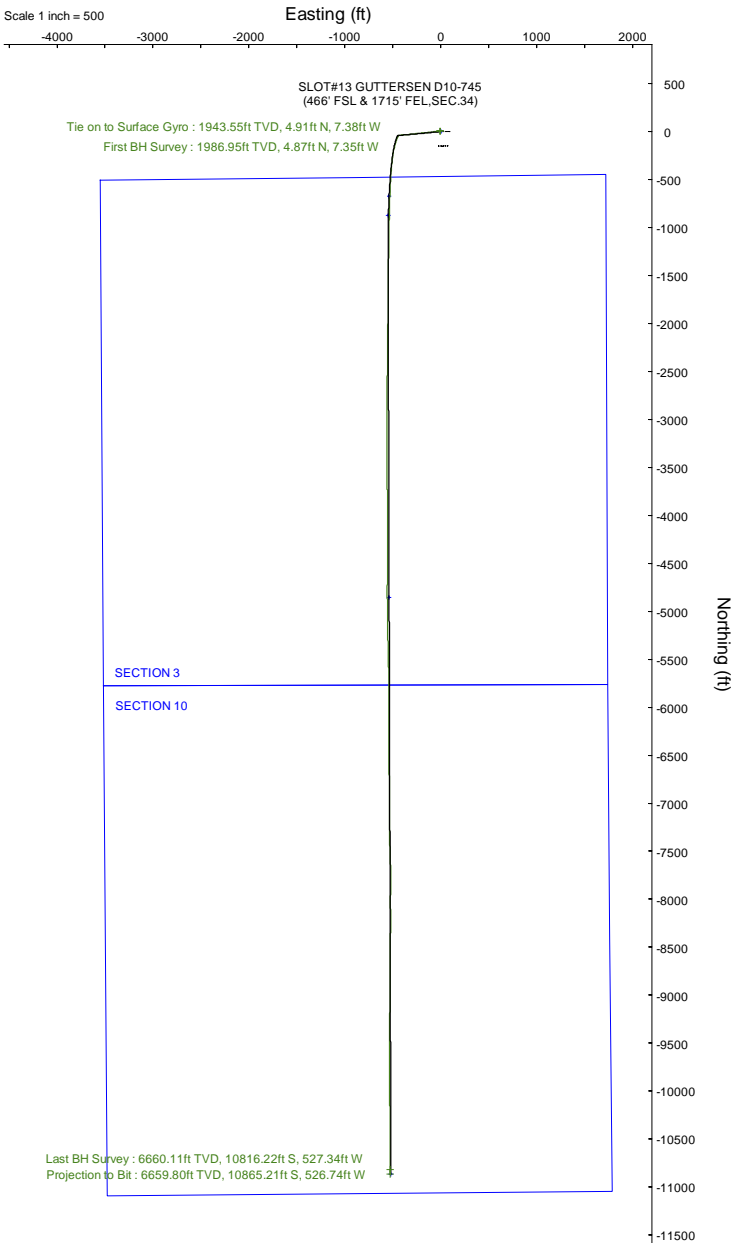
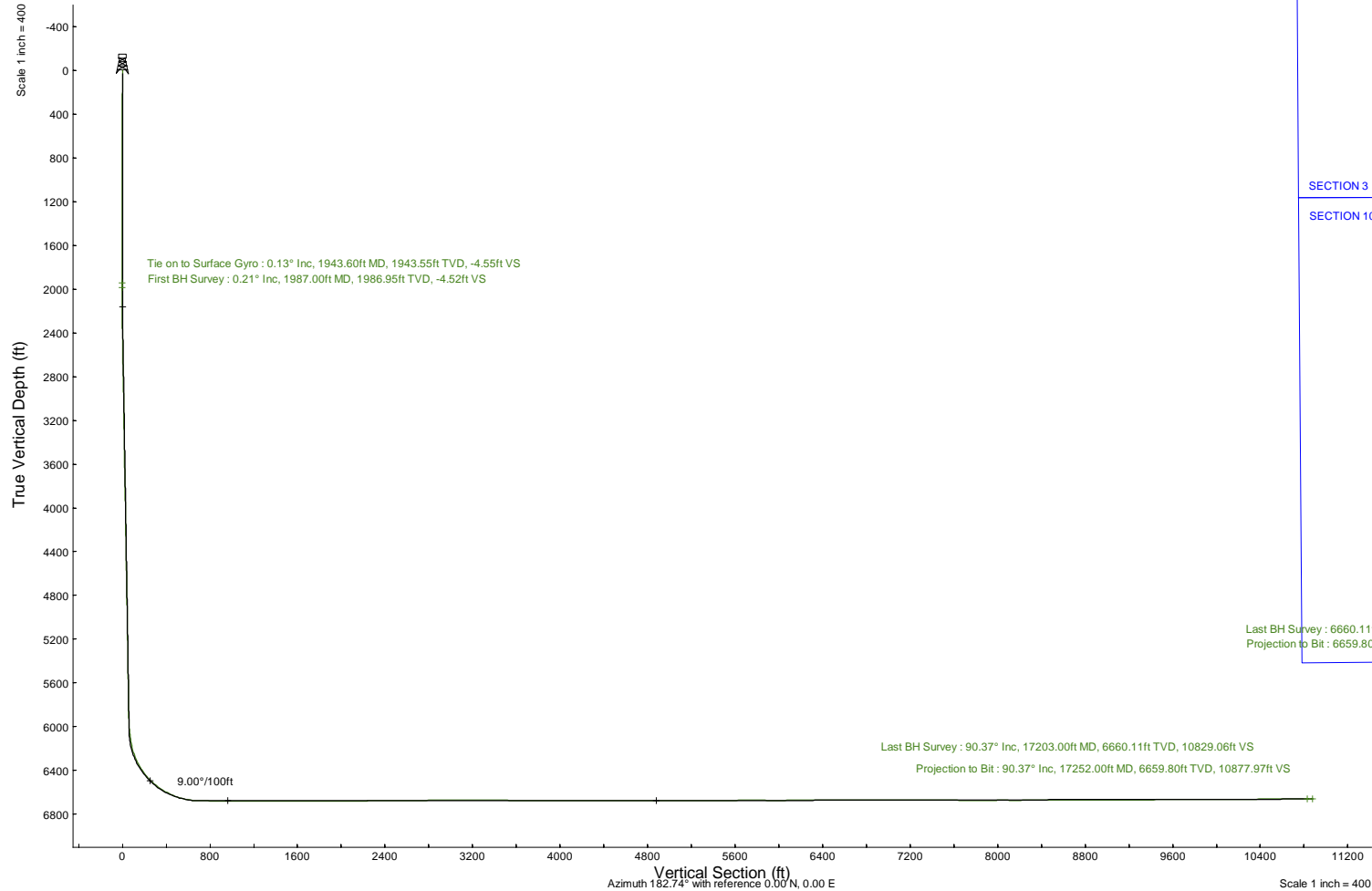
# NOBLE ENERGY, INC



Location:	COLORADO	Slot:	SLOT#13 GUTTERSEN D10-745 (466' FSL & 1715' FEL,SEC.34)
Field:	WELD COUNTY (NOBLE NAD 83 GRID)	Well:	GUTTERSEN D10-745
Facility:	SEC.34-T04N-R64W	Wellbore:	GUTTERSEN D10-745 PWB

Plot reference wellpath is GUTTERSEN D10-745 (REV-B.0) PWP	Grid System: NAD83 / Lambert Colorado SP, Northern Zone (501), US feet
True vertical depths are referenced to H&P 517 (30KB) (RKB)	North Reference: Grid north
Reference wellpath measured depths are referenced to H&P 517 (30KB) (RKB)	Scale: True distance
H&P 517 (30KB) (RKB) to Mean Sea Level: 4727 feet	Coordinates are in feet referenced to Slot
Mean Sea Level to Ground level (At Slot: SLOT#13 GUTTERSEN D10-745 (466' FSL & 1715' FEL,SEC.34)): 0 feet	Depths are in feet
Offset wellpath MDs are referenced to each path's default MD datum	Created by: guenaler on 2022-04-06; Database: WA_Denver

Location Information						
Facility Name			Grid East (US ft)	Grid North (US ft)	Latitude	Longitude
SEC.34-T04N-R64W			3268299.973	1340227.112	40°15'47.9880"N	104°32'18.8880"W
Slot	Local N (ft)	Local E (ft)	Grid East (US ft)	Grid North (US ft)	Latitude	Longitude
SLOT#13 GUTTERSEN D10-745 (466' FSL & 1715' FEL,SEC.34)	-94.82	1332.34	3269632.258	1340132.300	40°15'46.9080"N	104°32'1.7160"W
H&P 517 (30KB) (RKB) to Ground level (At Slot: SLOT#13 GUTTERSEN D10-745 (466' FSL & 1715' FEL,SEC.34))					4727ft	
Mean Sea Level to Ground level (At Slot: SLOT#13 GUTTERSEN D10-745 (466' FSL & 1715' FEL,SEC.34))					0ft	
H&P 517 (30KB) (RKB) to Mean Sea Level					4727ft	





Actual Wellpath Report

GUTTERSEN D10-745 AWP

Page 1 of 7



REFERENCE WELLPATH IDENTIFICATION			
Operator	NOBLE ENERGY, INC	Well	GUTTERSEN D10-745
Field	WELD COUNTY (NOBLE NAD 83 GRID)	API/Legal	
Facility	SEC.34-T04N-R64W	Wellbore	GUTTERSEN D10-745 AWB
Slot	SLOT#13 GUTTERSEN D10-745 (466' FSL & 1715' FEL,SEC.34)		

REPORT SETUP INFORMATION			
Projection System	NAD83 / Lambert Colorado SP, Northern Zone (501), US feet	Software System	WellArchitect® 6.0
North Reference	Grid	User	Guenaler
Scale	0.999957	Report Generated	4/6/2022 at 10:27:24 AM
Convergence at slot	0.62° East	Database	WA_Denver

WELLPATH LOCATION						
	Local coordinates		Grid coordinates		Geographic coordinates	
	North[ft]	East[ft]	Easting[US ft]	Northing[US ft]	Latitude	Longitude
Slot Location	-94.82	1332.34	3269632.26	1340132.30	40°15'46.9080"N	104°32'1.7160"W
Facility Reference Pt			3268299.97	1340227.11	40°15'47.9880"N	104°32'18.8880"W
Field Reference Pt			3000000.00	4454105.15	48°46'34.3150"N	105°30'0.0000"W

WELLPATH DATUM			
Calculation method	Minimum curvature	H&P 517 (30'KB) (RKB) to Facility Vertical Datum	4727.00ft
Horizontal Reference Pt	Slot	H&P 517 (30'KB) (RKB) to Mean Sea Level	4727.00ft
Vertical Reference Pt	H&P 517 (30'KB) (RKB)	H&P 517 (30'KB) (RKB) to Ground Level at Slot (SLOT#13 GUTTERSEN D10-745 (466' FSL & 1715' FEL,SEC.34))	4727.00ft
MD Reference Pt	H&P 517 (30'KB) (RKB)	Section Origin	N 0.00, E 0.00 ft
Field Vertical Reference	Mean Sea Level	Section Azimuth	182.74°



Actual Wellpath Report  
GUTTERSEN D10-745 AWP  
Page 2 of 7



REFERENCE WELLPATH IDENTIFICATION			
Operator	NOBLE ENERGY, INC	Well	GUTTERSEN D10-745
Field	WELD COUNTY (NOBLE NAD 83 GRID)	API/Legal	
Facility	SEC.34-T04N-R64W	Wellbore	GUTTERSEN D10-745 AWB
Slot	SLOT#13 GUTTERSEN D10-745 (466' FSL & 1715' FEL,SEC.34)		

WELLPATH DATA (180 stations)										
MD [ft]	Inclination [°]	Azimuth [°]	TVD [ft]	Vert Sect [ft]	North [ft]	East [ft]	Latitude	Longitude	DLS [°/100ft]	Comments
0.00	0.000	303.450	0.00	0.00	0.00	0.00	40°15'46.9080"N	104°32'1.7160"W	0.00	
87.07	0.370	303.450	87.07	-0.14	0.15	-0.23	40°15'46.9096"N	104°32'1.7190"W	0.42	
181.22	0.430	340.060	181.22	-0.62	0.65	-0.61	40°15'46.9145"N	104°32'1.7238"W	0.27	
272.00	0.460	322.770	271.99	-1.22	1.27	-0.95	40°15'46.9206"N	104°32'1.7280"W	0.15	
366.42	0.420	0.820	366.41	-1.85	1.91	-1.17	40°15'46.9270"N	104°32'1.7308"W	0.31	
461.07	0.400	321.450	461.06	-2.45	2.52	-1.37	40°15'46.9330"N	104°32'1.7333"W	0.29	
555.65	0.710	259.640	555.64	-2.56	2.67	-2.15	40°15'46.9346"N	104°32'1.7434"W	0.67	
650.38	0.330	181.760	650.36	-2.16	2.29	-2.74	40°15'46.9309"N	104°32'1.7510"W	0.76	
745.00	0.240	89.070	744.98	-1.90	2.02	-2.55	40°15'46.9283"N	104°32'1.7486"W	0.44	
839.47	0.170	153.270	839.45	-1.79	1.90	-2.29	40°15'46.9270"N	104°32'1.7452"W	0.24	
934.26	0.170	137.060	934.24	-1.57	1.67	-2.13	40°15'46.9248"N	104°32'1.7432"W	0.05	
1028.77	0.120	260.800	1028.75	-1.45	1.55	-2.13	40°15'46.9236"N	104°32'1.7433"W	0.27	
1123.23	0.220	244.850	1123.21	-1.35	1.46	-2.39	40°15'46.9227"N	104°32'1.7467"W	0.12	
1217.59	0.640	267.790	1217.57	-1.22	1.36	-3.08	40°15'46.9218"N	104°32'1.7556"W	0.47	
1312.12	0.480	312.270	1312.09	-1.42	1.61	-3.90	40°15'46.9243"N	104°32'1.7661"W	0.48	
1406.28	0.500	326.840	1406.25	-2.01	2.22	-4.42	40°15'46.9304"N	104°32'1.7727"W	0.13	
1500.74	0.610	325.820	1500.71	-2.74	2.98	-4.93	40°15'46.9380"N	104°32'1.7792"W	0.12	
1595.28	0.300	328.810	1595.24	-3.35	3.61	-5.34	40°15'46.9442"N	104°32'1.7844"W	0.33	
1689.84	0.480	311.690	1689.80	-3.80	4.08	-5.76	40°15'46.9490"N	104°32'1.7898"W	0.22	
1784.21	0.580	285.270	1784.17	-4.16	4.47	-6.52	40°15'46.9529"N	104°32'1.7995"W	0.28	
1878.69	0.360	299.790	1878.64	-4.39	4.75	-7.24	40°15'46.9557"N	104°32'1.8087"W	0.26	
1943.60	0.130	31.380	1943.55	-4.55	4.91	-7.38	40°15'46.9573"N	104°32'1.8105"W	0.59	Tie on to Surface Gyro
1987.00	0.210	182.610	1986.95	-4.52	4.87	-7.35	40°15'46.9569"N	104°32'1.8102"W	0.76	First BH Survey
2082.00	2.580	266.170	2081.92	-4.10	4.56	-9.50	40°15'46.9540"N	104°32'1.8379"W	2.70	
2176.00	5.040	263.930	2175.71	-3.22	3.98	-15.71	40°15'46.9490"N	104°32'1.9181"W	2.62	
2271.00	4.970	264.780	2270.34	-2.01	3.16	-23.96	40°15'46.9418"N	104°32'2.0246"W	0.11	
2365.00	6.160	264.580	2363.90	-0.73	2.32	-33.04	40°15'46.9344"N	104°32'2.1418"W	1.27	
2460.00	6.320	264.610	2458.34	0.73	1.34	-43.32	40°15'46.9259"N	104°32'2.2745"W	0.17	
2554.00	6.290	263.240	2551.77	2.31	0.25	-53.58	40°15'46.9162"N	104°32'2.4071"W	0.16	
2649.00	5.880	265.000	2646.23	3.83	-0.79	-63.60	40°15'46.9071"N	104°32'2.5364"W	0.47	
2744.00	6.400	262.120	2740.69	5.46	-1.94	-73.69	40°15'46.8968"N	104°32'2.6668"W	0.64	
2932.00	6.360	260.370	2927.52	9.62	-5.11	-94.34	40°15'46.8676"N	104°32'2.9335"W	0.11	
3027.00	6.610	264.270	3021.91	11.55	-6.54	-104.96	40°15'46.8547"N	104°32'3.0708"W	0.53	
3121.00	6.080	266.680	3115.34	12.88	-7.37	-115.32	40°15'46.8476"N	104°32'3.2045"W	0.63	
3215.00	6.150	263.930	3208.80	14.17	-8.19	-125.29	40°15'46.8406"N	104°32'3.3333"W	0.32	
3310.00	6.320	264.310	3303.24	15.72	-9.25	-135.56	40°15'46.8312"N	104°32'3.4658"W	0.18	
3405.00	6.260	265.310	3397.67	17.16	-10.19	-145.92	40°15'46.8230"N	104°32'3.5996"W	0.13	
3499.00	6.150	265.300	3491.12	18.47	-11.02	-156.05	40°15'46.8159"N	104°32'3.7303"W	0.12	
3594.00	6.140	264.490	3585.57	19.86	-11.92	-166.18	40°15'46.8081"N	104°32'3.8611"W	0.09	
3688.00	6.250	264.380	3679.02	21.33	-12.91	-176.27	40°15'46.7994"N	104°32'3.9915"W	0.12	
3783.00	6.480	263.550	3773.44	22.93	-14.02	-186.75	40°15'46.7896"N	104°32'4.1267"W	0.26	
3878.00	6.430	263.670	3867.84	24.63	-15.21	-197.36	40°15'46.7790"N	104°32'4.2638"W	0.05	
3972.00	6.400	263.550	3961.25	26.30	-16.37	-207.80	40°15'46.7686"N	104°32'4.3986"W	0.03	
4066.00	6.370	263.040	4054.67	28.01	-17.60	-218.18	40°15'46.7576"N	104°32'4.5327"W	0.07	
4161.00	6.480	265.170	4149.07	29.61	-18.69	-228.75	40°15'46.7480"N	104°32'4.6692"W	0.28	



Actual Wellpath Report  
GUTTERSEN D10-745 AWP  
Page 3 of 7



REFERENCE WELLPATH IDENTIFICATION			
Operator	NOBLE ENERGY, INC	Well	GUTTERSEN D10-745
Field	WELD COUNTY (NOBLE NAD 83 GRID)	API/Legal	
Facility	SEC.34-T04N-R64W	Wellbore	GUTTERSEN D10-745 AWB
Slot	SLOT#13 GUTTERSEN D10-745 (466' FSL & 1715' FEL,SEC.34)		

WELLPATH DATA (180 stations)										
MD [ft]	Inclination [°]	Azimuth [°]	TVD [ft]	Vert Sect [ft]	North [ft]	East [ft]	Latitude	Longitude	DLS [°/100ft]	Comments
4255.00	6.380	264.980	4242.48	31.01	-19.59	-239.24	40°15'46.7402"N	104°32'4.8046"W	0.11	
4350.00	6.440	263.860	4336.88	32.55	-20.62	-249.80	40°15'46.7311"N	104°32'4.9409"W	0.15	
4444.00	6.380	264.160	4430.30	34.14	-21.72	-260.23	40°15'46.7214"N	104°32'5.0757"W	0.07	
4539.00	6.330	263.880	4524.71	35.73	-22.81	-270.69	40°15'46.7117"N	104°32'5.2107"W	0.06	
4633.00	6.480	263.220	4618.13	37.41	-23.99	-281.11	40°15'46.7012"N	104°32'5.3453"W	0.18	
4728.00	6.330	264.930	4712.53	39.01	-25.09	-291.65	40°15'46.6915"N	104°32'5.4814"W	0.26	
4822.00	6.410	264.260	4805.95	40.49	-26.07	-302.03	40°15'46.6829"N	104°32'5.6154"W	0.12	
4917.00	6.420	264.120	4900.36	42.07	-27.14	-312.59	40°15'46.6734"N	104°32'5.7518"W	0.02	
5011.00	6.340	264.790	4993.78	43.57	-28.15	-322.99	40°15'46.6646"N	104°32'5.8860"W	0.12	
5105.00	6.350	264.500	5087.20	45.03	-29.12	-333.33	40°15'46.6561"N	104°32'6.0196"W	0.04	
5199.00	6.630	263.980	5180.60	46.61	-30.19	-343.90	40°15'46.6467"N	104°32'6.1561"W	0.30	
5294.00	6.710	264.600	5274.95	48.23	-31.29	-354.88	40°15'46.6370"N	104°32'6.2978"W	0.11	
5389.00	6.720	265.150	5369.30	49.75	-32.28	-365.95	40°15'46.6284"N	104°32'6.4407"W	0.07	
5483.00	6.740	265.650	5462.65	51.16	-33.16	-376.93	40°15'46.6209"N	104°32'6.5824"W	0.07	
5577.00	6.910	266.300	5555.99	52.47	-33.95	-388.07	40°15'46.6143"N	104°32'6.7263"W	0.20	
5672.00	6.920	266.340	5650.30	53.75	-34.68	-399.48	40°15'46.6083"N	104°32'6.8736"W	0.01	
5766.00	6.990	265.250	5743.61	55.13	-35.51	-410.83	40°15'46.6013"N	104°32'7.0201"W	0.16	
5861.00	6.910	265.610	5837.91	56.59	-36.43	-422.29	40°15'46.5934"N	104°32'7.1681"W	0.10	
5956.00	6.860	265.640	5932.22	58.00	-37.30	-433.65	40°15'46.5861"N	104°32'7.3147"W	0.05	
6050.00	7.020	219.540	6025.60	63.30	-42.16	-442.91	40°15'46.5391"N	104°32'7.4348"W	5.77	
6145.00	8.990	203.240	6119.69	74.90	-53.46	-449.54	40°15'46.4281"N	104°32'7.5218"W	3.14	
6239.00	16.270	202.210	6211.35	94.22	-72.42	-457.42	40°15'46.2416"N	104°32'7.6262"W	7.75	
6333.00	24.240	196.200	6299.47	125.46	-103.20	-467.80	40°15'45.9386"N	104°32'7.7644"W	8.75	
6428.00	32.600	194.880	6382.95	169.52	-146.74	-479.83	40°15'45.5097"N	104°32'7.9257"W	8.82	
6522.00	41.300	189.810	6458.02	225.18	-201.89	-491.65	40°15'44.9659"N	104°32'8.0858"W	9.80	
6617.00	50.120	188.170	6524.29	292.72	-269.00	-502.19	40°15'44.3039"N	104°32'8.2312"W	9.37	
6711.00	58.040	186.410	6579.40	368.54	-344.45	-511.78	40°15'43.5594"N	104°32'8.3656"W	8.56	
6806.00	66.200	183.630	6623.79	452.37	-428.03	-519.05	40°15'42.7343"N	104°32'8.4710"W	8.97	
6900.00	75.020	182.700	6654.97	540.95	-516.48	-523.92	40°15'41.8609"N	104°32'8.5462"W	9.43	
6994.00	83.120	182.630	6672.78	633.17	-608.59	-528.21	40°15'40.9511"N	104°32'8.6144"W	8.62	
7089.00	89.910	182.140	6678.55	727.93	-703.28	-532.15	40°15'40.0159"N	104°32'8.6786"W	7.17	
7183.00	89.660	181.390	6678.90	821.92	-797.23	-535.04	40°15'39.0879"N	104°32'8.7291"W	0.84	
7278.00	90.150	181.140	6679.06	916.88	-892.21	-537.14	40°15'38.1496"N	104°32'8.7695"W	0.58	
7372.00	89.450	181.810	6679.39	1010.86	-986.18	-539.56	40°15'37.2213"N	104°32'8.8138"W	1.03	
7467.00	89.010	181.370	6680.66	1105.83	-1081.13	-542.20	40°15'36.2833"N	104°32'8.8612"W	0.65	
7561.00	88.770	180.190	6682.48	1199.76	-1175.10	-543.48	40°15'35.3549"N	104°32'8.8908"W	1.28	
7656.00	89.750	180.510	6683.71	1294.67	-1270.09	-544.06	40°15'34.4164"N	104°32'8.9116"W	1.09	
7750.00	90.150	180.990	6683.79	1388.61	-1364.08	-545.29	40°15'33.4877"N	104°32'8.9407"W	0.66	
7845.00	90.710	180.460	6683.08	1483.55	-1459.07	-546.49	40°15'32.5493"N	104°32'8.9695"W	0.81	
7939.00	90.340	180.990	6682.22	1577.48	-1553.06	-547.68	40°15'31.6207"N	104°32'8.9980"W	0.69	
8034.00	90.710	180.630	6681.35	1672.42	-1648.05	-549.02	40°15'30.6822"N	104°32'9.0287"W	0.54	
8129.00	89.940	180.320	6680.81	1767.35	-1743.04	-549.81	40°15'29.7436"N	104°32'9.0522"W	0.87	
8223.00	90.000	180.720	6680.86	1861.28	-1837.04	-550.66	40°15'28.8149"N	104°32'9.0763"W	0.43	
8318.00	90.280	179.900	6680.63	1956.19	-1932.04	-551.18	40°15'27.8763"N	104°32'9.0963"W	0.91	
8412.00	90.620	180.650	6679.89	2050.10	-2026.03	-551.63	40°15'26.9475"N	104°32'9.1153"W	0.88	



Actual Wellpath Report  
GUTTERSEN D10-745 AWP  
Page 4 of 7



REFERENCE WELLPATH IDENTIFICATION			
Operator	NOBLE ENERGY, INC	Well	GUTTERSEN D10-745
Field	WELD COUNTY (NOBLE NAD 83 GRID)	API/Legal	
Facility	SEC.34-T04N-R64W	Wellbore	GUTTERSEN D10-745 AWB
Slot	SLOT#13 GUTTERSEN D10-745 (466' FSL & 1715' FEL,SEC.34)		

WELLPATH DATA (180 stations)										
MD [ft]	Inclination [°]	Azimuth [°]	TVD [ft]	Vert Sect [ft]	North [ft]	East [ft]	Latitude	Longitude	DLS [°/100ft]	Comments
8506.00	90.280	180.860	6679.15	2144.04	-2120.02	-552.87	40°15'26.0189"N	104°32'9.1445"W	0.43	
8601.00	90.220	180.210	6678.74	2238.97	-2215.01	-553.75	40°15'25.0804"N	104°32'9.1692"W	0.69	
8695.00	90.150	180.970	6678.43	2332.90	-2309.01	-554.72	40°15'24.1517"N	104°32'9.1949"W	0.81	
8790.00	90.680	180.790	6677.74	2427.85	-2403.99	-556.18	40°15'23.2133"N	104°32'9.2270"W	0.59	
8885.00	90.310	180.770	6676.92	2522.79	-2498.98	-557.47	40°15'22.2748"N	104°32'9.2570"W	0.39	
8979.00	91.080	180.970	6675.78	2616.73	-2592.96	-558.90	40°15'21.3463"N	104°32'9.2886"W	0.85	
9074.00	90.550	180.280	6674.43	2711.66	-2687.95	-559.94	40°15'20.4078"N	104°32'9.3153"W	0.92	
9168.00	90.860	180.150	6673.28	2805.56	-2781.94	-560.29	40°15'19.4791"N	104°32'9.3330"W	0.36	
9357.00	91.660	179.450	6669.12	2994.26	-2970.89	-559.63	40°15'17.6120"N	104°32'9.3510"W	0.56	
9451.00	89.510	179.720	6668.16	3088.11	-3064.88	-558.95	40°15'16.6832"N	104°32'9.3554"W	2.31	
9546.00	89.320	179.760	6669.13	3182.97	-3159.87	-558.52	40°15'15.7445"N	104°32'9.3632"W	0.20	
9640.00	89.380	179.990	6670.20	3276.85	-3253.86	-558.31	40°15'14.8157"N	104°32'9.3737"W	0.25	
9735.00	89.260	180.150	6671.32	3371.74	-3348.86	-558.43	40°15'13.8770"N	104°32'9.3885"W	0.21	
9829.00	89.170	180.290	6672.61	3465.64	-3442.85	-558.79	40°15'12.9483"N	104°32'9.4063"W	0.18	
9923.00	89.540	180.110	6673.67	3559.54	-3536.84	-559.12	40°15'12.0196"N	104°32'9.4238"W	0.44	
10018.00	89.380	179.920	6674.56	3654.43	-3631.84	-559.14	40°15'11.0809"N	104°32'9.4374"W	0.26	
10112.00	89.450	178.870	6675.52	3748.26	-3725.82	-558.15	40°15'10.1521"N	104°32'9.4378"W	1.12	
10206.00	89.690	180.080	6676.23	3842.10	-3819.82	-557.29	40°15'9.2232"N	104°32'9.4399"W	1.31	
10301.00	89.140	179.810	6677.20	3936.98	-3914.81	-557.20	40°15'8.2845"N	104°32'9.4520"W	0.64	
10395.00	89.910	180.270	6677.98	4030.88	-4008.81	-557.26	40°15'7.3557"N	104°32'9.4660"W	0.95	
10490.00	89.970	180.190	6678.08	4125.78	-4103.81	-557.64	40°15'6.4171"N	104°32'9.4843"W	0.11	
10584.00	90.180	179.560	6677.96	4219.67	-4197.80	-557.44	40°15'5.4882"N	104°32'9.4948"W	0.71	
10679.00	90.430	179.570	6677.45	4314.52	-4292.80	-556.72	40°15'4.5494"N	104°32'9.4988"W	0.26	
10774.00	90.150	180.420	6676.97	4409.41	-4387.80	-556.71	40°15'3.6107"N	104°32'9.5120"W	0.94	
10868.00	89.880	180.270	6676.94	4503.32	-4481.80	-557.28	40°15'2.6820"N	104°32'9.5325"W	0.33	
10963.00	89.780	179.880	6677.23	4598.22	-4576.80	-557.40	40°15'1.7433"N	104°32'9.5474"W	0.42	
11057.00	90.220	180.410	6677.23	4692.12	-4670.79	-557.64	40°15'0.8145"N	104°32'9.5637"W	0.73	
11152.00	89.880	180.460	6677.14	4787.05	-4765.79	-558.36	40°14'59.8758"N	104°32'9.5863"W	0.36	
11246.00	89.880	179.260	6677.34	4880.93	-4859.79	-558.13	40°14'58.9470"N	104°32'9.5965"W	1.28	
11341.00	90.000	179.170	6677.44	4975.75	-4954.78	-556.83	40°14'58.0082"N	104°32'9.5930"W	0.16	
11436.00	90.370	178.960	6677.13	5070.55	-5049.77	-555.28	40°14'57.0695"N	104°32'9.5864"W	0.45	
11530.00	90.950	179.360	6676.05	5164.36	-5143.75	-553.90	40°14'56.1406"N	104°32'9.5818"W	0.75	
11625.00	90.120	179.060	6675.16	5259.17	-5238.74	-552.59	40°14'55.2019"N	104°32'9.5782"W	0.93	
11719.00	90.220	177.940	6674.88	5352.91	-5332.70	-550.13	40°14'54.2731"N	104°32'9.5596"W	1.20	
11814.00	90.310	178.690	6674.44	5447.63	-5427.66	-547.34	40°14'53.3345"N	104°32'9.5369"W	0.80	
11908.00	90.400	179.080	6673.86	5541.41	-5521.64	-545.51	40°14'52.4057"N	104°32'9.5265"W	0.43	
12097.00	89.970	179.820	6673.25	5730.10	-5710.63	-543.69	40°14'50.5380"N	104°32'9.5296"W	0.45	
12192.00	90.000	180.180	6673.28	5824.99	-5805.63	-543.69	40°14'49.5993"N	104°32'9.5429"W	0.38	
12287.00	89.540	179.800	6673.66	5919.88	-5900.63	-543.68	40°14'48.6606"N	104°32'9.5560"W	0.63	
12381.00	90.340	178.350	6673.76	6013.68	-5994.61	-542.16	40°14'47.7318"N	104°32'9.5497"W	1.76	
12476.00	90.370	181.020	6673.17	6108.54	-6089.60	-541.64	40°14'46.7931"N	104°32'9.5562"W	2.81	
12570.00	90.030	180.010	6672.84	6202.47	-6183.59	-542.48	40°14'45.8644"N	104°32'9.5803"W	1.13	
12665.00	90.090	179.920	6672.74	6297.35	-6278.59	-542.42	40°14'44.9257"N	104°32'9.5929"W	0.11	
12760.00	90.090	180.080	6672.59	6392.25	-6373.59	-542.42	40°14'43.9869"N	104°32'9.6062"W	0.17	
12854.00	89.970	179.930	6672.54	6486.14	-6467.59	-542.43	40°14'43.0581"N	104°32'9.6195"W	0.20	





Actual Wellpath Report  
GUTTERSEN D10-745 AWP  
Page 5 of 7



REFERENCE WELLPATH IDENTIFICATION			
Operator	NOBLE ENERGY, INC	Well	GUTTERSEN D10-745
Field	WELD COUNTY (NOBLE NAD 83 GRID)	API/Legal	
Facility	SEC.34-T04N-R64W	Wellbore	GUTTERSEN D10-745 AWB
Slot	SLOT#13 GUTTERSEN D10-745 (466' FSL & 1715' FEL,SEC.34)		

WELLPATH DATA (180 stations) † = interpolated, ‡ = extrapolated station										
MD [ft]	Inclination [°]	Azimuth [°]	TVD [ft]	Vert Sect [ft]	North [ft]	East [ft]	Latitude	Longitude	DLS [°/100ft]	Comments
12949.00	89.850	179.140	6672.69	6580.99	-6562.59	-541.66	40°14'42.1193"N	104°32'9.6229"W	0.84	
13044.00	89.880	178.100	6672.92	6675.74	-6657.56	-539.37	40°14'41.1806"N	104°32'9.6067"W	1.10	
13138.00	90.160	179.450	6672.88	6769.51	-6751.54	-537.36	40°14'40.2518"N	104°32'9.5939"W	1.47	
13233.00	90.250	179.750	6672.54	6864.37	-6846.53	-536.70	40°14'39.3130"N	104°32'9.5987"W	0.33	
13327.00	89.910	179.560	6672.41	6958.23	-6940.53	-536.13	40°14'38.3842"N	104°32'9.6046"W	0.41	
13422.00	90.100	179.730	6672.40	7053.09	-7035.53	-535.54	40°14'37.4454"N	104°32'9.6103"W	0.27	
13516.00	90.280	179.530	6672.09	7146.96	-7129.53	-534.94	40°14'36.5165"N	104°32'9.6156"W	0.29	
13611.00	90.220	179.360	6671.68	7241.80	-7224.52	-534.02	40°14'35.5777"N	104°32'9.6171"W	0.19	
13706.00	90.010	179.510	6671.49	7336.64	-7319.52	-533.08	40°14'34.6390"N	104°32'9.6183"W	0.27	
13800.00	90.160	178.990	6671.35	7430.46	-7413.51	-531.85	40°14'33.7101"N	104°32'9.6156"W	0.58	
13895.00	89.270	178.270	6671.82	7525.22	-7508.48	-529.58	40°14'32.7714"N	104°32'9.5997"W	1.21	
13989.00	89.110	177.430	6673.15	7618.86	-7602.40	-526.05	40°14'31.8429"N	104°32'9.5674"W	0.91	
14178.00	90.220	180.790	6674.25	7807.45	-7791.35	-523.12	40°14'29.9756"N	104°32'9.5560"W	1.87	
14273.00	90.220	180.450	6673.89	7902.38	-7886.34	-524.15	40°14'29.0370"N	104°32'9.5826"W	0.36	
14368.00	90.370	180.300	6673.40	7997.30	-7981.34	-524.77	40°14'28.0984"N	104°32'9.6039"W	0.22	
14462.00	89.670	179.690	6673.37	8091.19	-8075.34	-524.76	40°14'27.1696"N	104°32'9.6170"W	0.99	
14557.00	90.190	180.050	6673.48	8186.07	-8170.33	-524.54	40°14'26.2308"N	104°32'9.6275"W	0.67	
14651.00	90.010	179.230	6673.32	8279.93	-8264.33	-523.95	40°14'25.3020"N	104°32'9.6331"W	0.89	
14746.00	90.440	181.710	6672.95	8374.85	-8359.32	-524.73	40°14'24.3634"N	104°32'9.6565"W	2.65	
14841.00	90.130	180.910	6672.47	8469.82	-8454.29	-526.90	40°14'23.4252"N	104°32'9.6978"W	0.90	
14935.00	90.100	180.710	6672.28	8563.77	-8548.28	-528.23	40°14'22.4966"N	104°32'9.7281"W	0.22	
15030.00	90.470	180.420	6671.81	8658.70	-8643.28	-529.17	40°14'21.5580"N	104°32'9.7535"W	0.49	
15125.00	90.250	180.380	6671.21	8753.61	-8738.27	-529.83	40°14'20.6194"N	104°32'9.7753"W	0.24	
15219.00	90.310	180.490	6670.76	8847.54	-8832.27	-530.55	40°14'19.6907"N	104°32'9.7977"W	0.13	
15314.00	90.280	179.900	6670.27	8942.44	-8927.27	-530.87	40°14'18.7520"N	104°32'9.8152"W	0.62	
15409.00	90.010	179.980	6670.03	9037.33	-9022.27	-530.77	40°14'17.8133"N	104°32'9.8272"W	0.30	
15503.00	90.250	180.290	6669.81	9131.23	-9116.27	-530.99	40°14'16.8845"N	104°32'9.8433"W	0.42	
15598.00	90.370	180.230	6669.30	9226.14	-9211.26	-531.42	40°14'15.9458"N	104°32'9.8621"W	0.14	
15692.00	90.160	180.470	6668.86	9320.06	-9305.26	-532.00	40°14'15.0171"N	104°32'9.8827"W	0.34	
15786.00	90.530	180.110	6668.30	9413.97	-9399.26	-532.47	40°14'14.0883"N	104°32'9.9020"W	0.55	
15881.00	90.160	179.810	6667.73	9508.85	-9494.26	-532.41	40°14'13.1496"N	104°32'9.9145"W	0.50	
15975.00	90.370	180.050	6667.29	9602.74	-9588.25	-532.29	40°14'12.2207"N	104°32'9.9262"W	0.34	
16164.00	90.220	180.070	6666.32	9791.53	-9777.25	-532.49	40°14'10.3532"N	104°32'9.9552"W	0.08	
16259.00	90.220	179.840	6665.95	9886.42	-9872.25	-532.42	40°14'9.4145"N	104°32'9.9676"W	0.24	
16353.00	90.280	179.980	6665.54	9980.30	-9966.25	-532.27	40°14'8.4856"N	104°32'9.9789"W	0.16	
16447.00	90.500	179.500	6664.90	10074.17	-10060.25	-531.84	40°14'7.5568"N	104°32'9.9865"W	0.56	
16542.00	90.250	179.870	6664.28	10169.03	-10155.24	-531.32	40°14'6.6180"N	104°32'9.9931"W	0.47	
16636.00	90.410	179.560	6663.74	10262.90	-10249.24	-530.85	40°14'5.6892"N	104°32'10.0003"W	0.37	
16730.00	90.530	179.700	6662.97	10356.76	-10343.23	-530.24	40°14'4.7603"N	104°32'10.0056"W	0.20	
16825.00	90.190	179.490	6662.37	10451.61	-10438.23	-529.57	40°14'3.8216"N	104°32'10.0103"W	0.42	
16919.00	90.470	179.700	6661.83	10545.47	-10532.23	-528.91	40°14'2.8927"N	104°32'10.0149"W	0.37	
17014.00	90.310	179.910	6661.18	10640.34	-10627.22	-528.59	40°14'1.9539"N	104°32'10.0240"W	0.28	
17108.00	90.310	179.640	6660.68	10734.22	-10721.22	-528.22	40°14'1.0251"N	104°32'10.0324"W	0.29	
17203.00	90.370	179.300	6660.11	10829.06	-10816.22	-527.34	40°14'0.0863"N	104°32'10.0344"W	0.36	Last BH Survey
17252.00‡	90.370	179.300	6659.80	10877.97	-10865.21	-526.74	40°13'59.6021"N	104°32'10.0336"W	0.00	Projection to Bit



Actual Wellpath Report

GUTTERSEN D10-745 AWP

Page 6 of 7



REFERENCE WELLPATH IDENTIFICATION			
Operator	NOBLE ENERGY, INC	Well	GUTTERSEN D10-745
Field	WELD COUNTY (NOBLE NAD 83 GRID)	API/Legal	
Facility	SEC.34-T04N-R64W	Wellbore	GUTTERSEN D10-745 AWB
Slot	SLOT#13 GUTTERSEN D10-745 (466' FSL & 1715' FEL,SEC.34)		

HOLE & CASING SECTIONS - Ref Wellbore: GUTTERSEN D10-745 AWB    Ref Wellpath: GUTTERSEN D10-745 AWP									
String/Diameter	Start MD [ft]	End MD [ft]	Interval [ft]	Start TVD [ft]	End TVD [ft]	Start N/S [ft]	Start E/W [ft]	End N/S [ft]	End E/W [ft]
13.5in Open Hole	30.00	1959.00	1929.00	30.00	1958.95	0.02	-0.03	4.92	-7.36
9.625in Casing Surface	30.00	1949.00	1919.00	30.00	1948.95	0.02	-0.03	4.92	-7.37
8.5in Open Hole	1959.00	17252.00	15293.00	1958.95	6659.80	4.92	-7.36	-10865.21	-526.74

TARGETS								
Name	TVD [ft]	North [ft]	East [ft]	Grid East [US ft]	Grid North [US ft]	Latitude	Longitude	Shape
GUTTERSEN D10-745 SECTION 10	0.00	0.00	0.00	3269632.26	1340132.30	40°15'46.9080"N	104°32'1.7160"W	polygon
	2D Polygon: dimensions not calculated							
GUTTERSEN D10-745 SECTION 3	0.00	0.00	0.00	3269632.26	1340132.30	40°15'46.9080"N	104°32'1.7160"W	polygon
	2D Polygon: dimensions not calculated							
GUTTERSEN D10-745 REV-1 BHL from Plan (200'FSL&2307'FEL,SEC.10)	6662.00	-10866.40	-520.43	3269111.85	1329266.39	40°13'59.5897"N	104°32'9.9524"W	point
GUTTERSEN D10-745 LP/TPZ (200'FNL&2258'FEL,SEC.3)	6677.00	-672.98	-539.03	3269093.25	1339459.35	40°15'40.3161"N	104°32'8.7631"W	point
GUTTERSEN D10-745 REV-1 TARGET 1	6677.00	-872.79	-547.75	3269084.53	1339259.55	40°15'38.3426"N	104°32'8.9036"W	point
GUTTERSEN D10-745 T2	6677.00	-4854.79	-538.74	3269093.54	1335277.73	40°14'58.9943"N	104°32'9.3458"W	point

WELLPATH COMPOSITION - Ref Wellbore: GUTTERSEN D10-745 AWB    Ref Wellpath: GUTTERSEN D10-745 AWP				
Start MD [ft]	End MD [ft]	Positional Uncertainty Model	Log Name/Comment	Wellbore
0.00	1943.60	Gyrodatta 2015 - GC+DROP+COND	Surface Gyros GC+Drop+Cond <87.07-1943.6'>	GUTTERSEN D10-745 AWB
1943.60	17252.00	OWSG MWD rev2 (MS+IFR1)	OWSG MWD rev2 + IFR1 8.5" Hole 1987'-17203'>	GUTTERSEN D10-745 AWB



Actual Wellpath Report

GUTTERSEN D10-745 AWP

Page 7 of 7



REFERENCE WELLPATH IDENTIFICATION			
Operator	NOBLE ENERGY, INC	Well	GUTTERSEN D10-745
Field	WELD COUNTY (NOBLE NAD 83 GRID)	API/Legal	
Facility	SEC.34-T04N-R64W	Wellbore	GUTTERSEN D10-745 AWB
Slot	SLOT#13 GUTTERSEN D10-745 (466' FSL & 1715' FEL,SEC.34)		

WELLPATH COMMENTS				
MD [ft]	Inclination [°]	Azimuth [°]	TVD [ft]	Comment
1943.60	0.130	31.380	1943.55	Tie on to Surface Gyro
1987.00	0.210	182.610	1986.95	First BH Survey
17203.00	90.370	179.300	6660.11	Last BH Survey
17252.00	90.370	179.300	6659.80	Projection to Bit