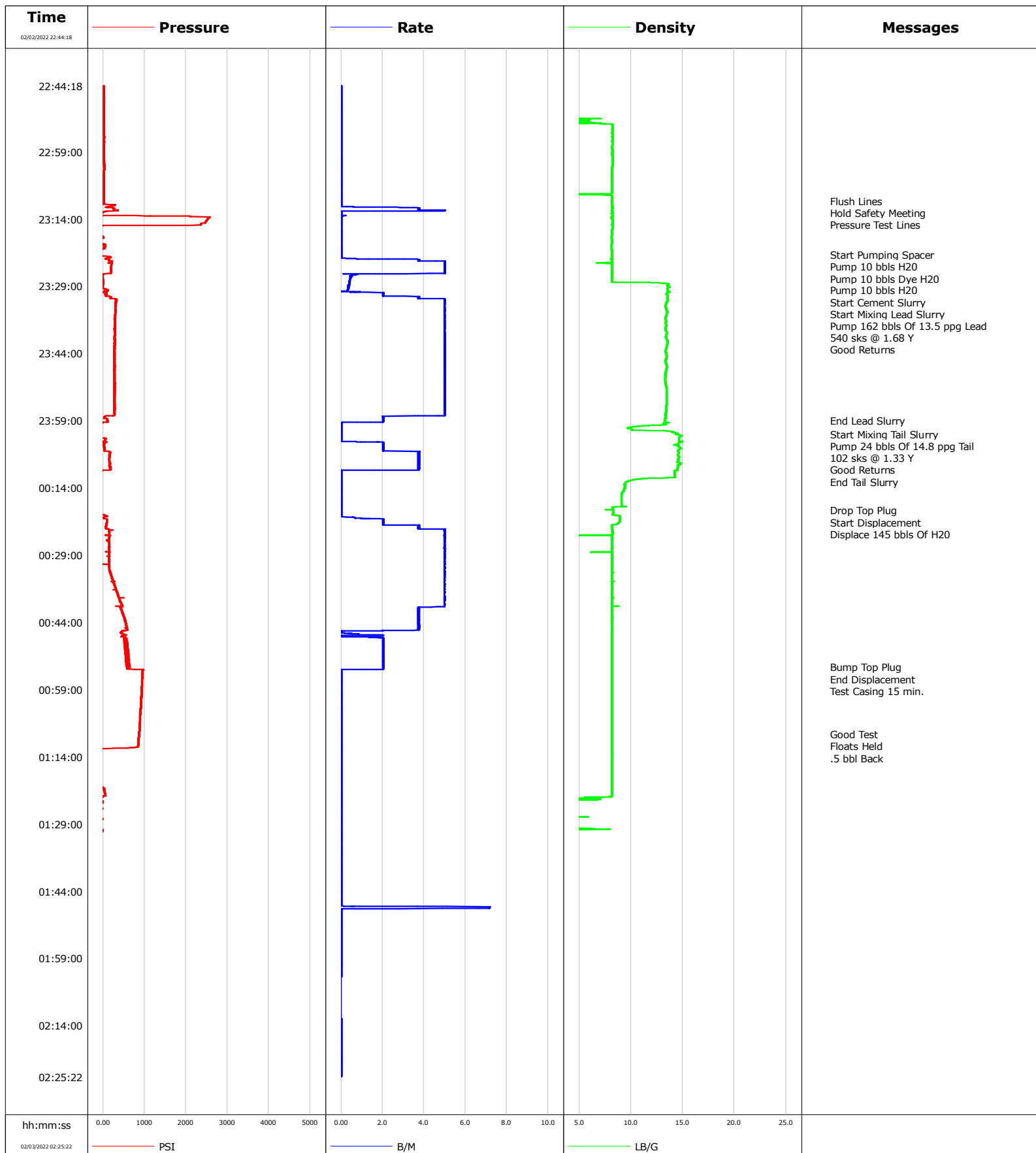


Well	Guttersen D10-745	Client	Chevron
Field	DJ	SIR No.	
Engineer	Justin Zika	Job Type	Surface
Country	United States	Job Date	02-02-2022



Cementing Service Report

				Customer Chevron				Job Number			
Well Guttersen D10-745			Location (legal)			Schlumberger Location			Job Start Feb/02/2022		
Field DJ		Formation Name/Type Shale		Deviation deg		Bit Size in		Well MD 1959.0 ft		Well TVD ft	
County Weld		State/Province Colorado		BHP psi		BHST 120 degF		BHCT 90 degF		Pore Press. Gradient lb/gal	
Well Master 0065876341		API/UWI 05-123-48918									
Rig Name		Drilled For Oil		Service Via Land		Casing/ Liner					
						Depth, ft		Size, in		Weight, lb/ft	
										Grade	
Offshore Zone		Well Class New		Well Type Development		1949.0		9.6		36.0	
						0.0		0.0		0.0	
Drilling Fluid Type		Max. Density lb/gal		Plastic Viscosity cP		Tubing/Drill Pipe					
						T/D		Depth, ft		Size, in	
										Weight, lb/ft	
										Grade	
Service Line Cementing		Job Type Surface									
Max. Allowed Tub. Press 800 psi		Max. Allowed Ann. Press psi		WH Connection		Perforations/Open Hole					
						Top, ft		Bottom, ft		shot/ft	
						ft		ft		No. of Shots	
						ft		ft		Total Interval ft	
						ft		ft		Diameter in	
Service Instructions Rig Up/ Hold Safety Meeting Flush Lines/ Psi Test Pump 30 bbls H2O Pump 162 bbls Of 13.5 ppg @ 540 sks @ 1.68 Y Mix H2O 8.93 qps Pump 24 bbls Of 14.8 ppg @ 102 sks @ 1.33 Y Mix H2O 6.37 qps Drop Top Plug Displace 145 bbls H2O						Treat Down Casing		Displacement 145.0 bbl		Packer Type	
										Packer Depth ft	
						Tubing Vol. bbl		Casing Vol. 148.0 bbl		Annular Vol. bbl	
										Openhole Vol. bbl	
Casing/Tubing Secured <input checked="" type="checkbox"/>		1 Hole Vol. Circulated prior to Cement <input checked="" type="checkbox"/>				Casing Tools		Squeeze Job			
Lift Pressure 8000 psi						Shoe Type Float		Squeeze Type			
Pipe Rotated <input type="checkbox"/>		Pipe Reciprocated <input type="checkbox"/>				Shoe Depth 1949.0 ft		Tool Type			
No. Centralizers		Top Plugs 1		Bottom Plugs		Stage Tool Type		Tool Depth ft			
Cement Head Type						Stage Tool Depth ft		Tail Pipe Size in			
Job Scheduled For Feb/02/2022		Arrived on Location Feb/02/2022		Leave Location Feb/02/2022		Collar Type Float		Tail Pipe Depth ft			
						Collar Depth 1903.0 ft		Sqz. Total Vol. bbl			
Date	Time 24-hr clock	Treating Pressure PSI	Flow Rate B/M	Density LB/G	Volume BBL	Message					
02/02/2022	22:44:18	22	0.0	0.06	0.0	Started Acquisition					
02/02/2022	22:49:18	22	0.0	0.06	0.0						
02/02/2022	22:54:18	22	0.0	8.21	0.0						
02/02/2022	22:59:18	22	0.0	8.20	0.0						
02/02/2022	23:04:18	22	0.0	8.20	0.0						
02/02/2022	23:09:18	17	0.0	8.20	0.0						
02/02/2022	23:10:00	13	0.0	8.19	0.0	Flush Lines					
02/02/2022	23:14:18	2503	0.0	8.22	3.4						
02/02/2022	23:19:18	-65	0.0	8.18	3.4						
02/02/2022	23:22:00	-60	0.0	8.18	3.4	Start Pumping Spacer					
02/02/2022	23:24:18	196	5.0	8.18	9.6						
02/02/2022	23:28:00	4	0.4	8.19	20.1	Start Cement Slurry					
02/02/2022	23:29:00	-1	0.4	13.56	20.5	Start Mixing Lead Slurry					
02/02/2022	23:29:18	-5	0.4	13.63	20.6						
02/02/2022	23:34:18	306	5.0	13.44	37.2						
02/02/2022	23:39:18	287	5.0	13.46	62.2						
02/02/2022	23:44:18	274	5.0	13.41	87.2						
02/02/2022	23:49:18	269	5.0	13.33	112.3						
02/02/2022	23:54:18	283	5.0	13.46	137.3						
02/02/2022	23:59:00	104	2.0	13.30	157.7	End Lead Slurry					
02/02/2022	23:59:18	114	2.0	13.28	158.3						

Well			Field		Job Start	Customer		Job Number
Guttersen D10-745			DJ		Feb/02/2022	Chevron		
Date	Time 24-hr clock	Treating Pressure PSI	Flow Rate B/M	Density LB/G	Volume BBL	Message		
02/03/2022	00:04:18	13	2.0	14.61	159.6			
02/03/2022	00:09:18	173	3.8	14.53	175.7			
02/03/2022	00:11:00	-42	0.0	14.23	178.6	End Tail Slurry		
02/03/2022	00:14:18	-47	0.0	9.35	178.6			
02/03/2022	00:19:00	-51	0.0	8.28	178.6	Drop Top Plug		
02/03/2022	00:19:18	-51	0.0	8.28	178.6			
02/03/2022	00:20:00	-10	0.0	8.25	178.6	Start Displacement		
02/03/2022	00:24:18	159	5.0	8.23	190.6			
02/03/2022	00:29:18	146	5.0	8.20	215.6			
02/03/2022	00:34:18	219	5.0	8.18	240.5			
02/03/2022	00:39:18	420	5.0	8.18	265.5			
02/03/2022	00:44:18	553	3.8	8.18	285.9			
02/03/2022	00:49:18	526	2.0	8.18	296.2			
02/03/2022	00:54:00	622	2.0	8.18	305.7	Bump Top Plug		
02/03/2022	00:54:18	622	2.0	8.18	306.3			
02/03/2022	00:59:18	937	0.0	8.18	306.8			
02/03/2022	01:04:18	901	0.0	8.18	306.8			
02/03/2022	01:09:00	869	0.0	8.19	306.8	Good Test		
02/03/2022	01:09:18	864	0.0	8.19	306.8			
02/03/2022	01:14:18	-38	0.0	8.19	306.8			
02/03/2022	01:19:18	-38	0.0	8.19	306.8			
02/03/2022	01:24:18	-24	0.0	0.20	306.8			
02/03/2022	01:29:18	-47	0.0	0.12	306.8			
02/03/2022	01:34:18	-51	0.0	0.10	306.8			
02/03/2022	01:39:18	-51	0.0	0.09	306.8			
02/03/2022	01:44:18	-56	0.0	0.09	306.8			
02/03/2022	01:49:18	-51	0.0	0.09	310.2			
02/03/2022	01:54:18	-3750	0.0	-6.25	310.2			
02/03/2022	01:59:18	-3750	0.0	-6.25	310.2			
02/03/2022	02:14:18	-3750	0.0	-6.25	310.2			
02/03/2022	02:19:18	-3750	0.0	-6.25	310.2			

Post Job Summary

Average Pump Rates, bbl/min					Volume of Fluid Injected, bbl			
Slurry 4.0	N2	Mud	Maximum Rate 7.2		Total Slurry 186.0	Mud 0.0	Spacer 30.0	N2
Treating Pressure Summary, psi					Breakdown Fluid			
Maximum 2585	Final 590	Average 337	Bump Plug to 1050	Breakdown	Type	Volume bbl	Density lb/gal	
Avg. N2 Percent %		Designed Slurry Volume 186.0 bbl		Displacement 145.0 bbl	Mix Water Temp 80 degF	Cement Circulated to Surface? <input checked="" type="checkbox"/>	Volume 20.0 bbl	
						Washed Thru Perfs <input checked="" type="checkbox"/>	To ft	
Customer or Authorized Representative Jim Turner			Schlumberger Supervisor Justin Zika			Circulation Lost <input type="checkbox"/>	Job Completed <input checked="" type="checkbox"/>	
						-	-	