



Well Services
E - L I N E

RADIAL BOND TOOL
GAMMA RAY
CCL

Company		OCCIDENTAL PETROLEUM CO		Country USA	
Well		BALLANTINE 3-30			
Field		WATTENBERG			
County		WELD			
State		CO			
Location:		API # : 05-123-23298		Other Services	
Permanent Datum		GL		Elevation 4990'	
Log Measured From		KB 12'		K.B. 5002'	
Drilling Measured From		GL		D.F. 5001'	
		LAT 40.114844 LONG -105.049142		G.L. 4990'	
		SEC 30 TWP 2N RGE 68W			
Company		OCCIDENTAL PETROLEUM CO			
Well		BALLANTINE 3-30			
Field		WATTENBERG			
County		WELD			
State		CO			
Country		USA			

Date	8/30/2021
Run Number	ONE
Depth Driller	7771'
Depth Logger	296'
Bottom Logged Interval	2500'
Top Log Interval	SURFACE
Open Hole Size	7.875"
Type Fluid	WATER
Density / Viscosity	N/A
Max. Recorded Temp.	111.60°
Estimated Cement Top	N/A
Time Well Ready	ON ARRIVAL
Time Logger on Bottom	N/A
Equipment Number	7770
Location	GREELEY, CO
Recorded By	CODY JENSEN
Witnessed By	S CHAPPELL


Borehole Record			Tubing Record				
Run Number	Bit	From	To	Size	Weight	From	To
Casing Record	Size			Wgt/Ft	Top		Bottom
Surface String	8.625"			24#	SURFACE		817'
Prot. String							
Production String	4.5"			11.6#	SURFACE		7763'
Liner							

<<< Fold Here >>>

All interpretations are opinions based on inferences from electrical or other measurements and we cannot and do not guarantee the accuracy or correctness of any interpretation, and we shall not, except in the case of gross or willful negligence on our part, be liable or responsible for any loss, costs, damages, or expenses incurred or sustained by anyone resulting from any interpretation made by any of our officers, agents or employees. These interpretations are also subject to our general terms and conditions set out in our current Price Schedule.


Comments

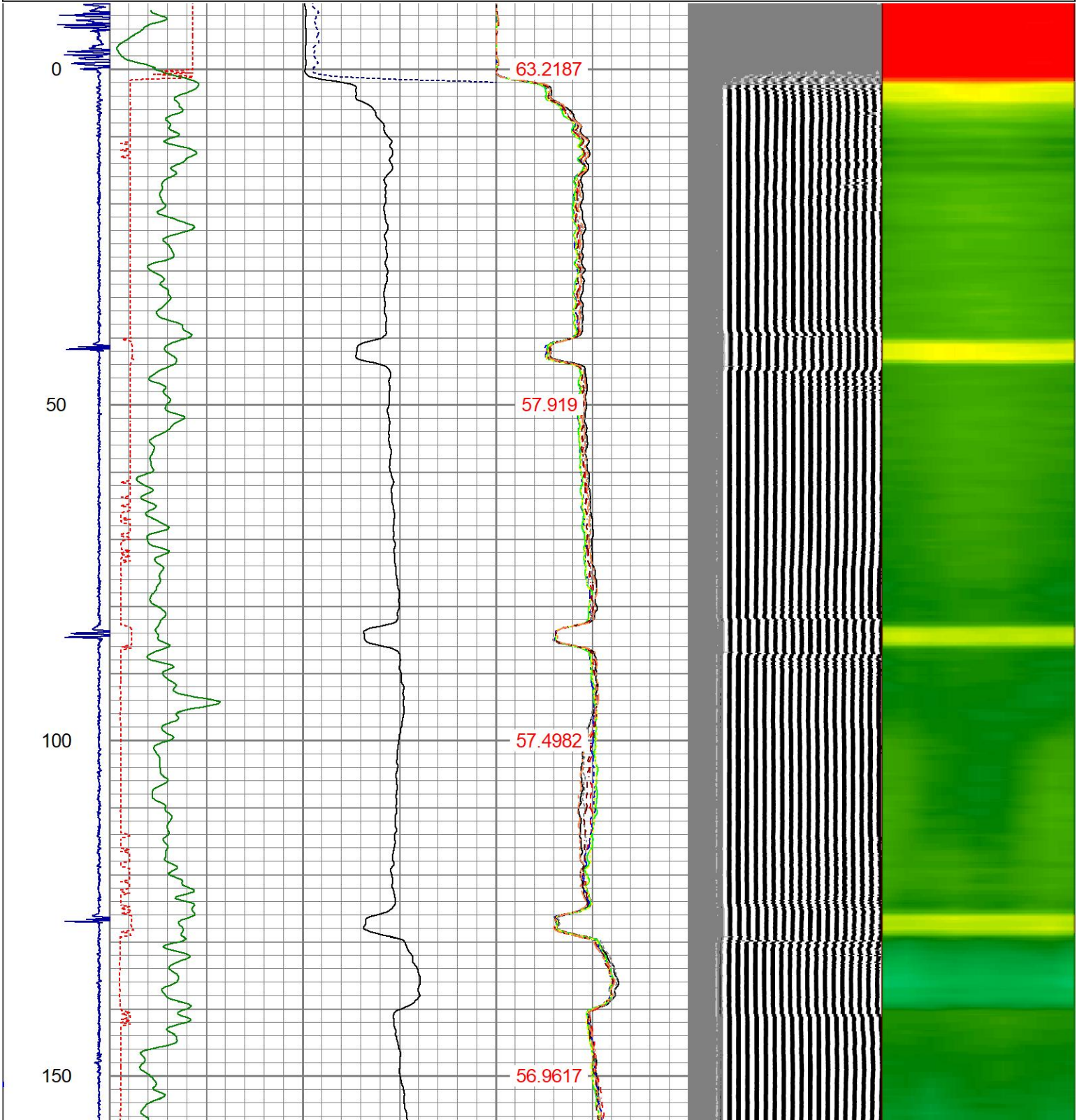
RAN CBL TO VERIFY CEMENT BOND
WELL LOADED UPON ARRIVAL

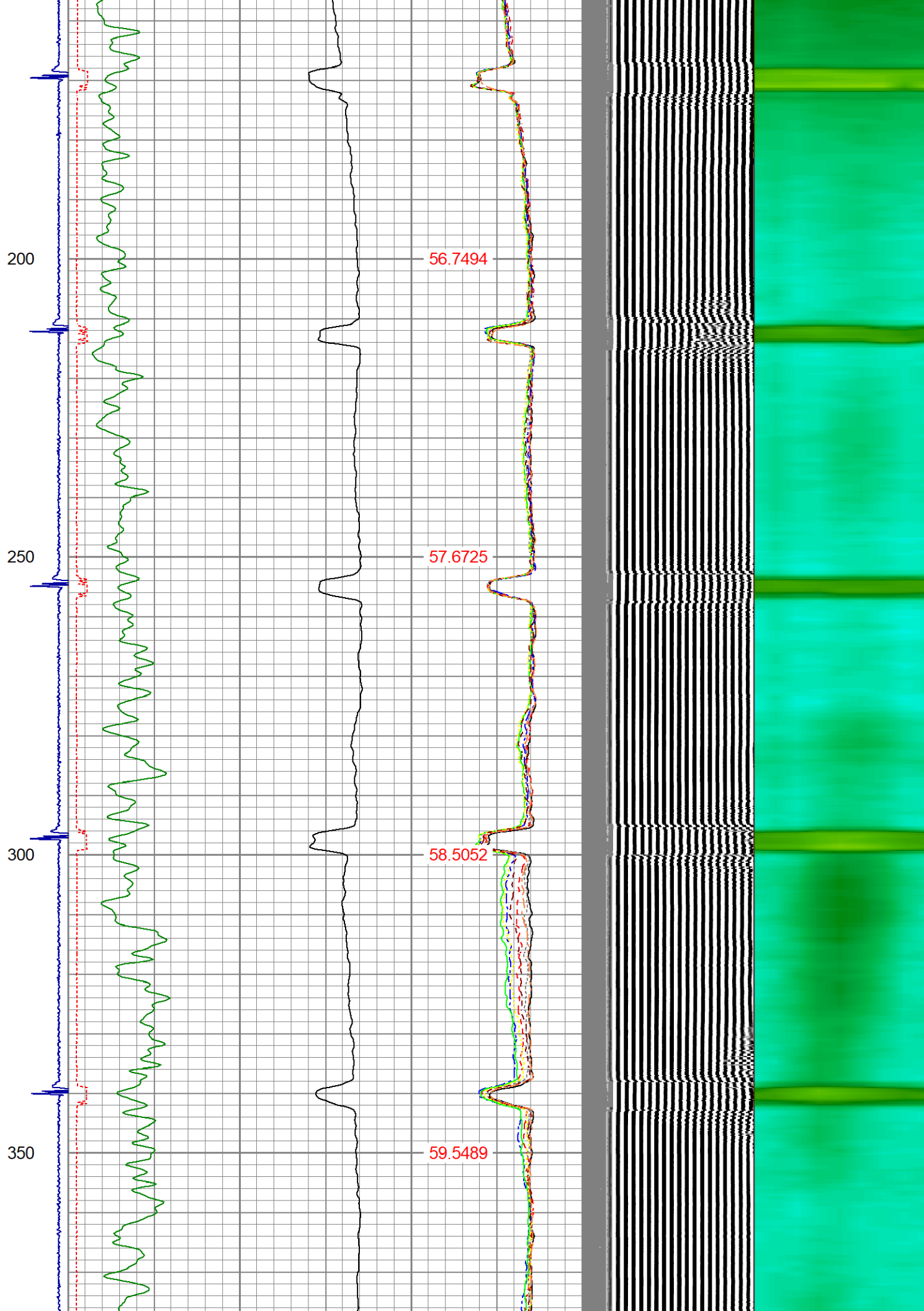
Sensor	Offset (ft)	Schematic	Description	Length (ft)	O.D. (in)	Weight (lb)
			CHD-1_11/16_Cablehead 1 11/16 Cablehead	1.00	1.68	5.00

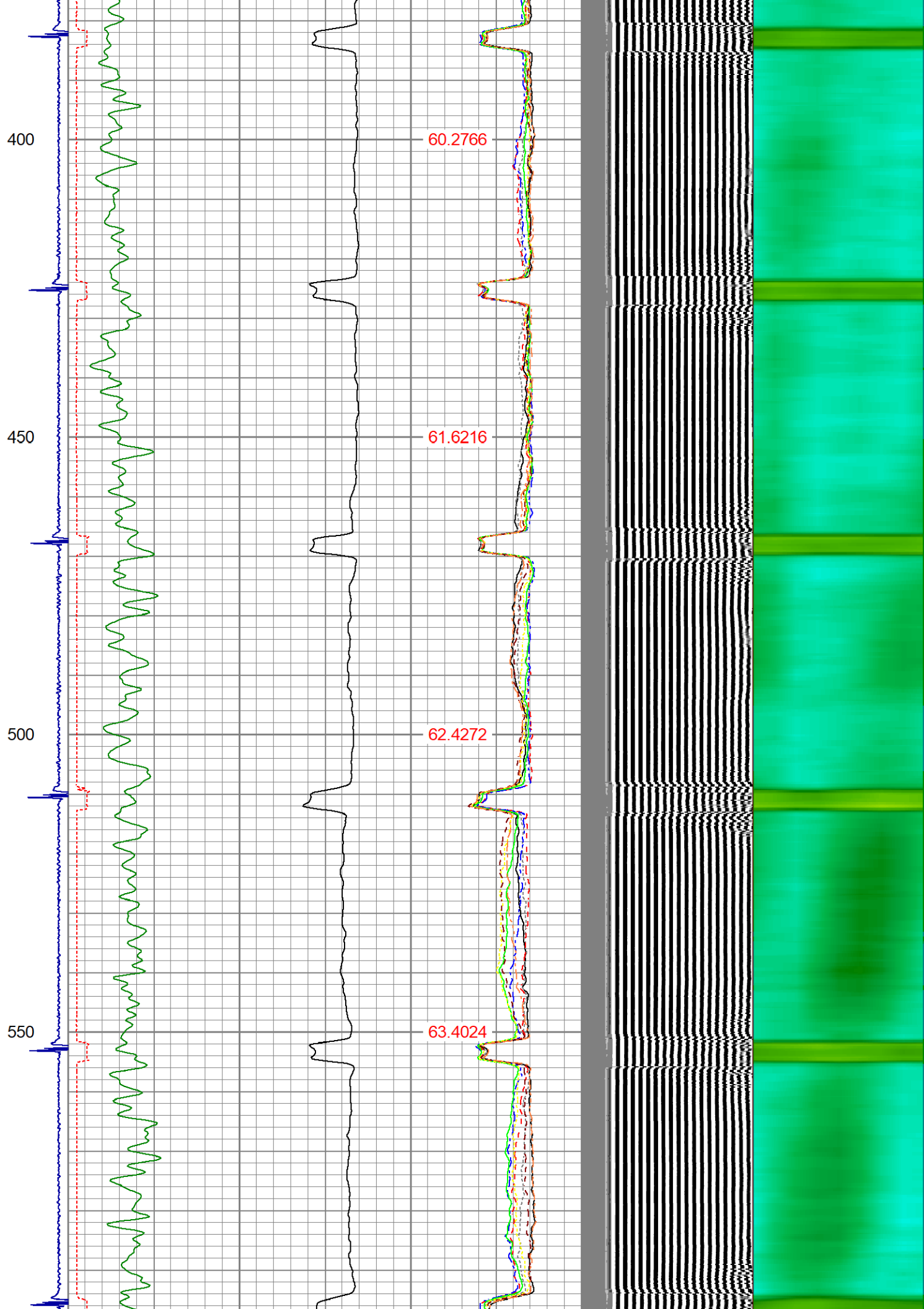
			CENT-1.69variable 1.69" Centrilizer Variable Length	3.00	1.69	15.00
HEADVOLT	16.88					
Temp	14.02					
WVFS8	11.79		RBT-27SBT10 (Greeley Ext Temp) Probe 2.75" Radial with Integral Temperature Sub	9.39	2.75	
WVFS7	11.79					
WVFS6	11.79					
WVFS5	11.79					
WVFS4	11.79					
WVFS3	11.79					
WVFS2	11.79					
WVFS1	11.79					
WVF3FT	11.79					
WVF5FT	10.79					
WVFCAL	7.54					
HEADVOLT	7.54					
			CENT-1.69variable 1.69" Centrilizer Variable Length	3.00	1.69	15.00
CCL	3.63					
			GR-27GRL10 (27GRL10-XXXX) 2-3/4" Probe Gamma Ray	4.54	2.75	50.00
GR	0.89					
Dataset: ballantine 3-30 .db: field/well/run1/pass8 Total length: 20.93 ft Total weight: 85.00 lb O.D.: 2.75 in						

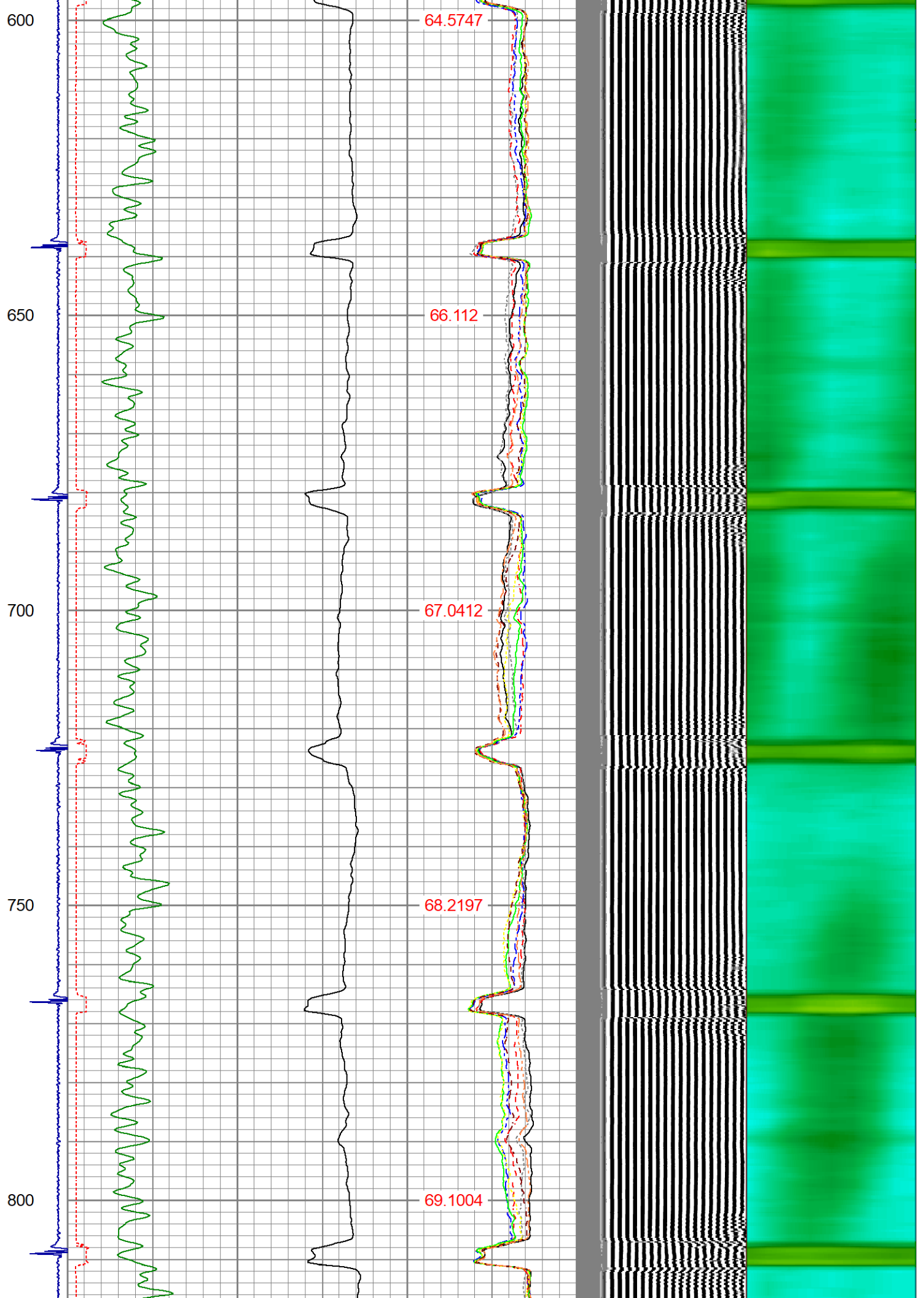
Database File ballantine 3-30 .db
 Dataset Pathname pass8
 Presentation Format ips_rbtcolor
 Dataset Creation Mon Aug 30 08:11:27 2021
 Charted by Depth in Feet scaled 1:240

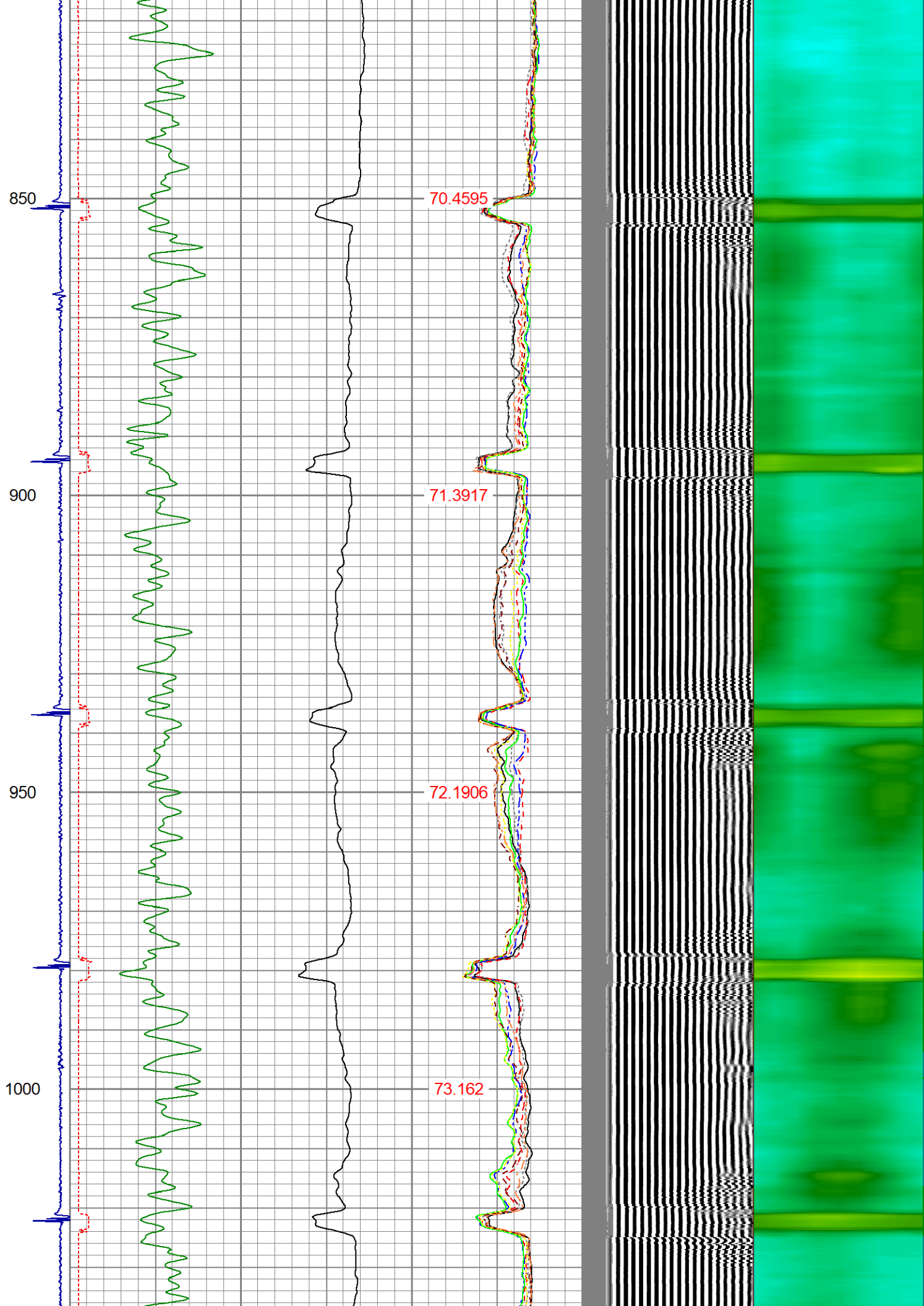
Charted by			Depth in Feet scaled 1.240														
-9	CCL	1	200	TT (usec)	1000	0	AMP (mV)	100	0	AMPS1	100	200	VDL (usec)	1200	1	Cement Map	8
LSPD (ft/min)	0		0	GR (GAPI)	200	0	AMPx5 (mV)	20	0	AMPS2	100						
	200		200	GR (GAPI)	400												
	0		250							0	AMPS3	100					
									0	AMPS4	100						
									0	AMPS5	100						
									0	AMPS6	100						
									0	AMPS7	100						
									0	AMPS8	100						
									TEMP								
									(degF)								











1050

1100

1150

1200

1250

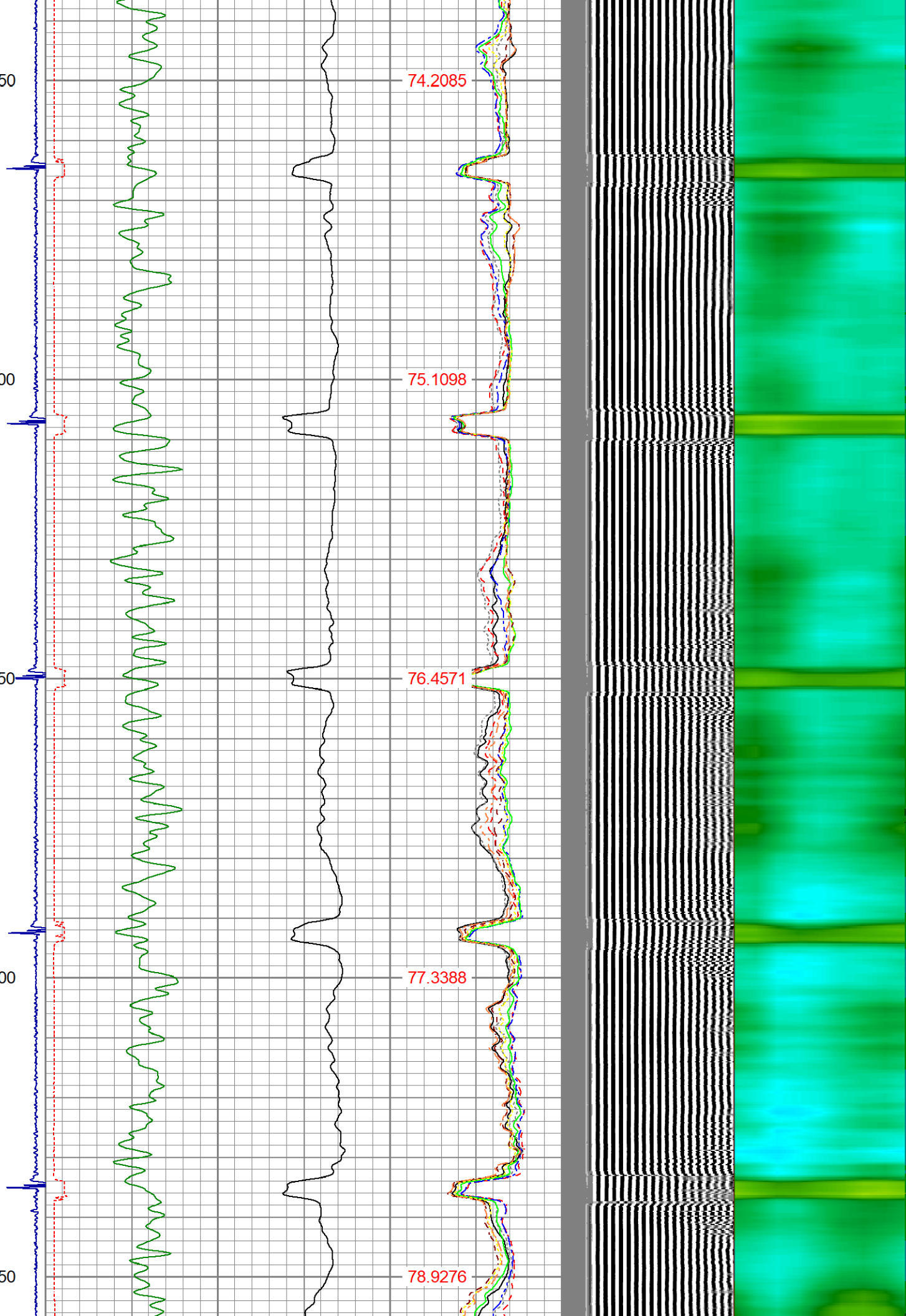
74.2085

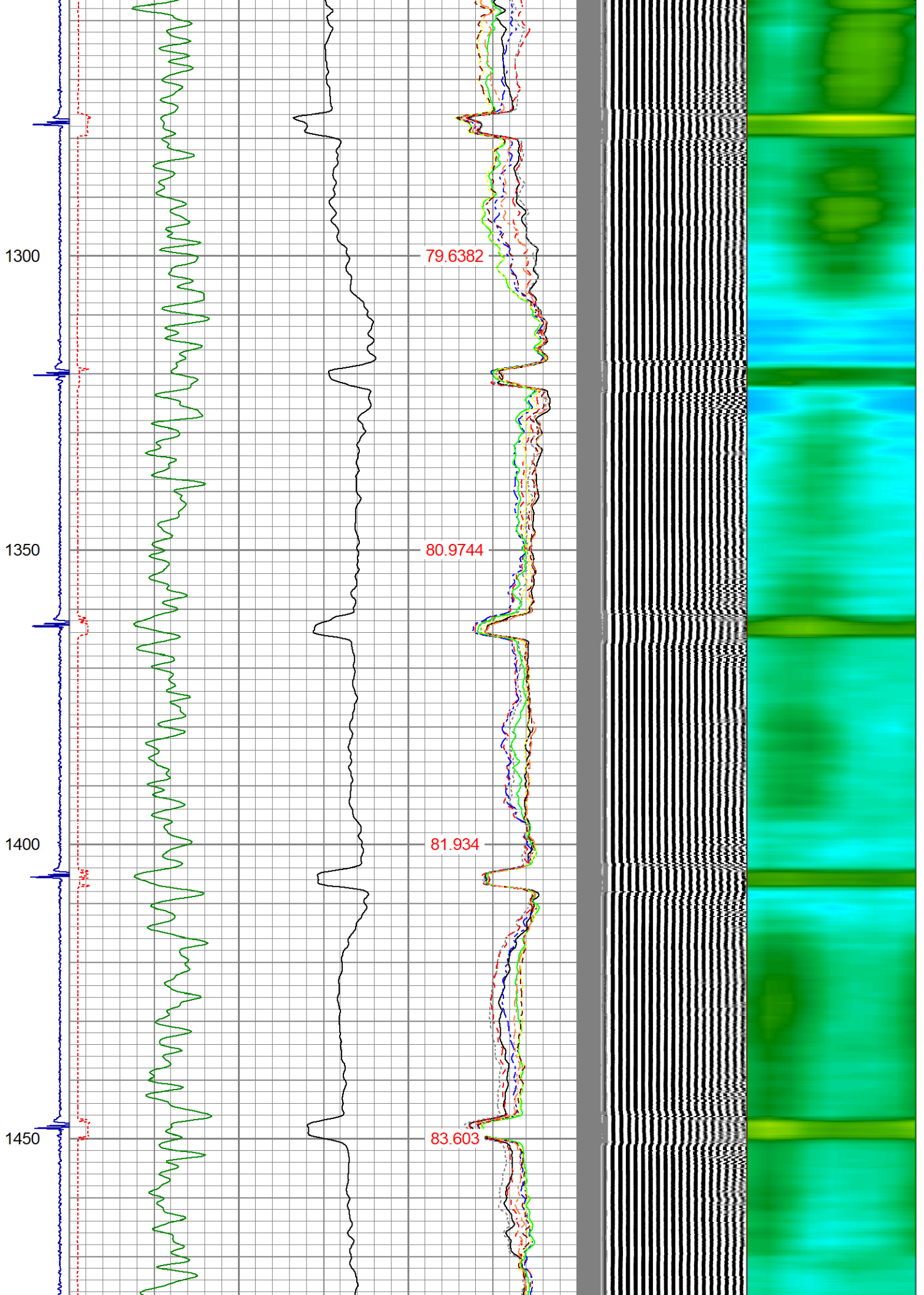
75.1098

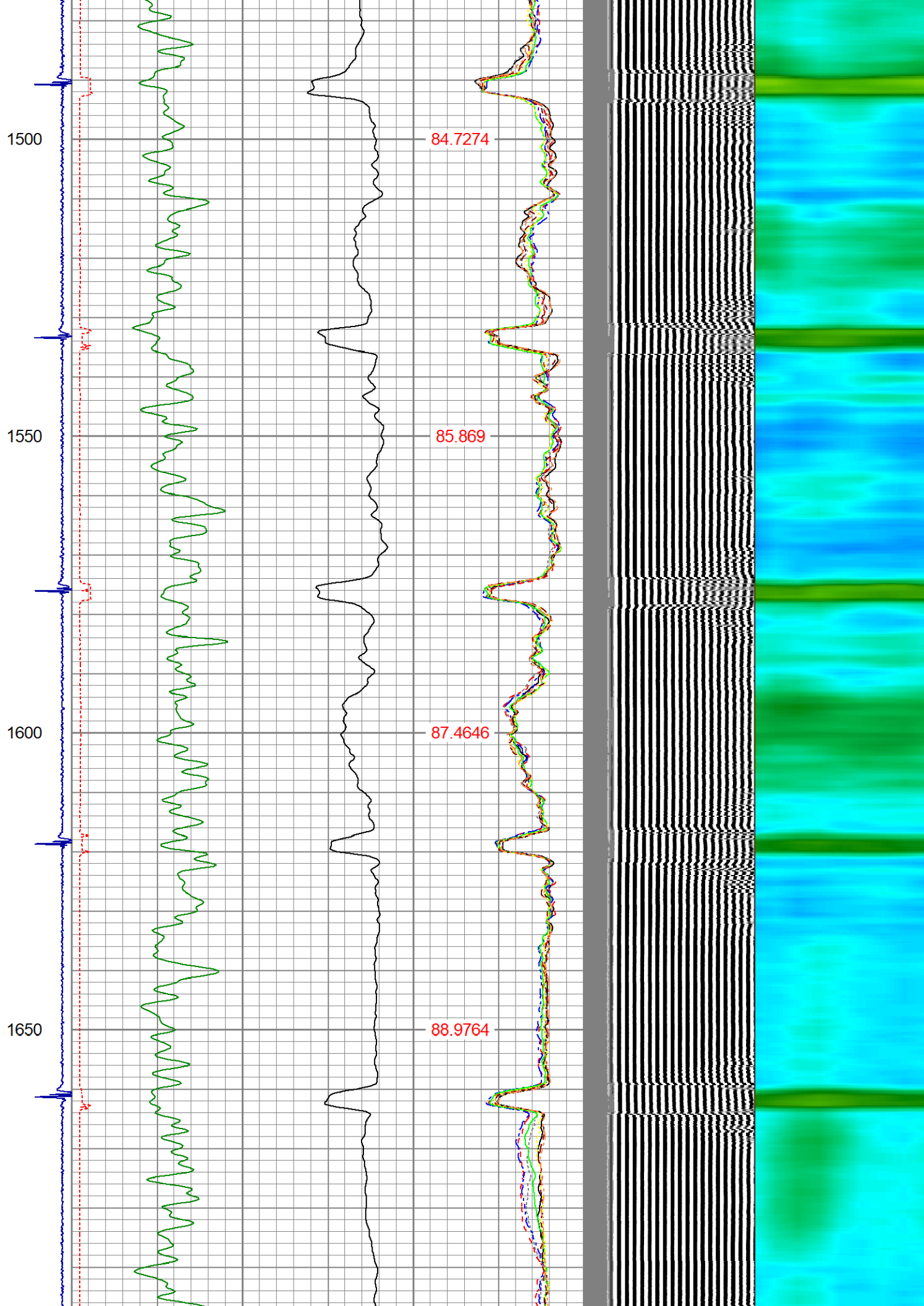
76.4571

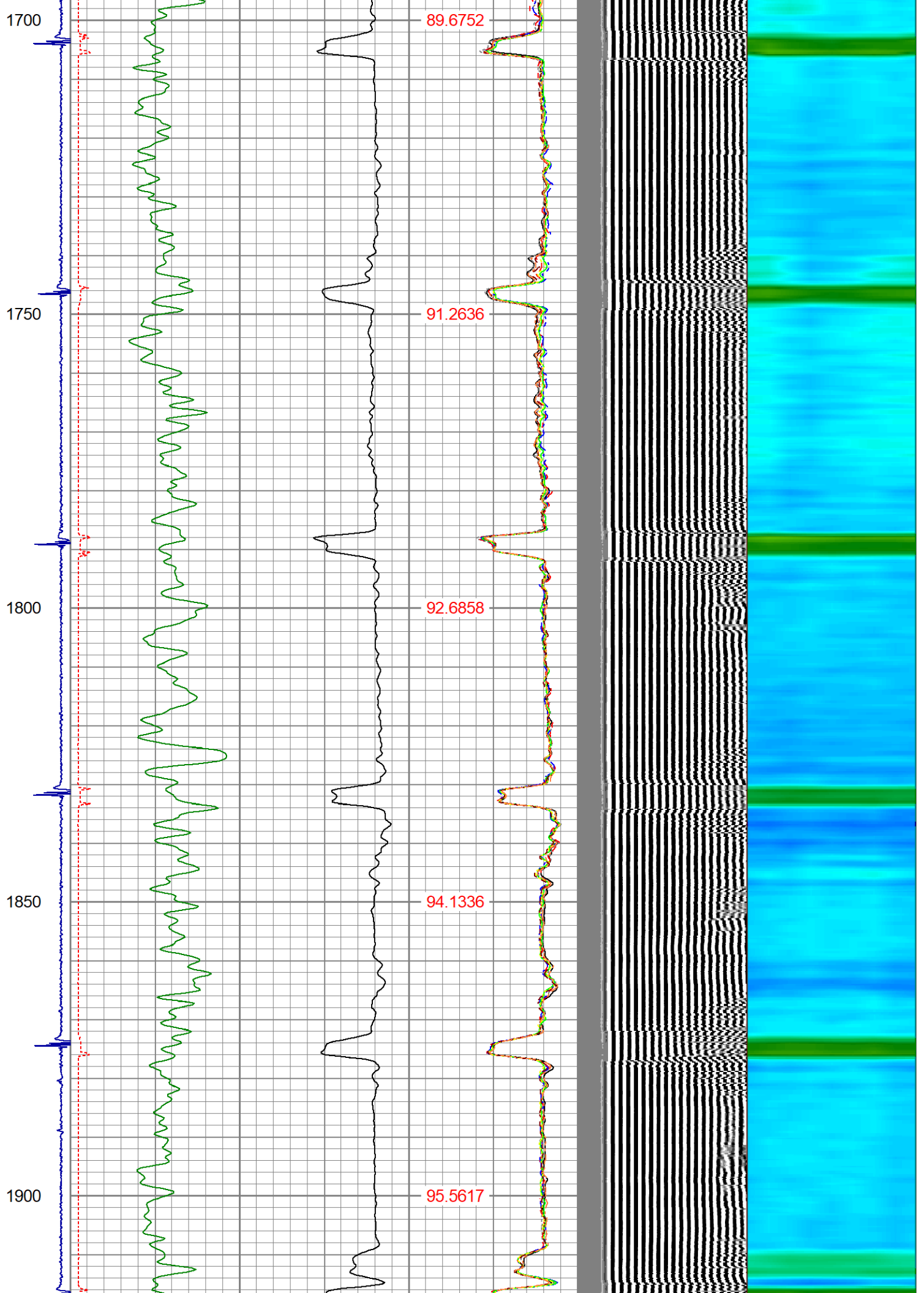
77.3388

78.9276









1950

2000

2050

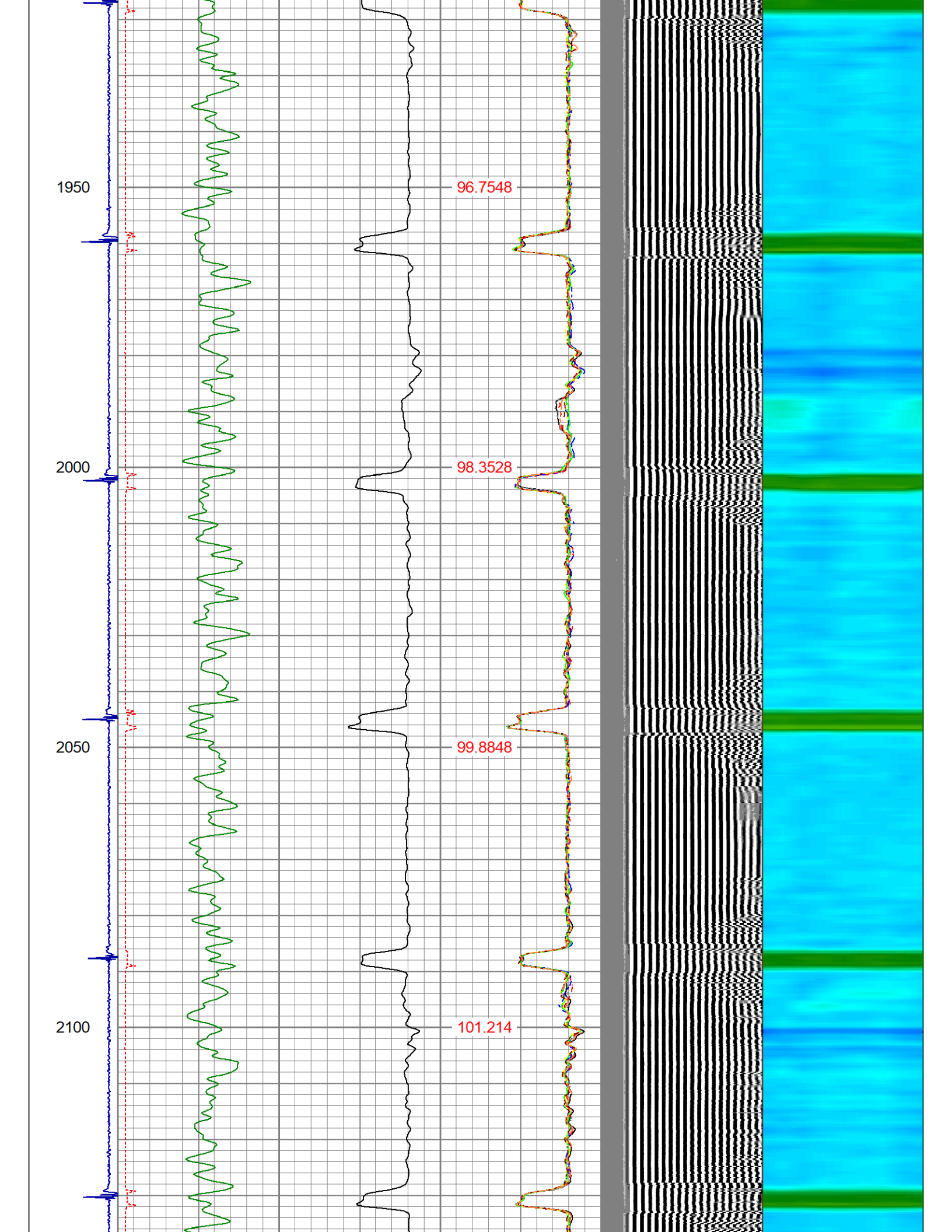
2100

96.7548

98.3528

99.8848

101.214



2150

102.688

2200

104.45

2250

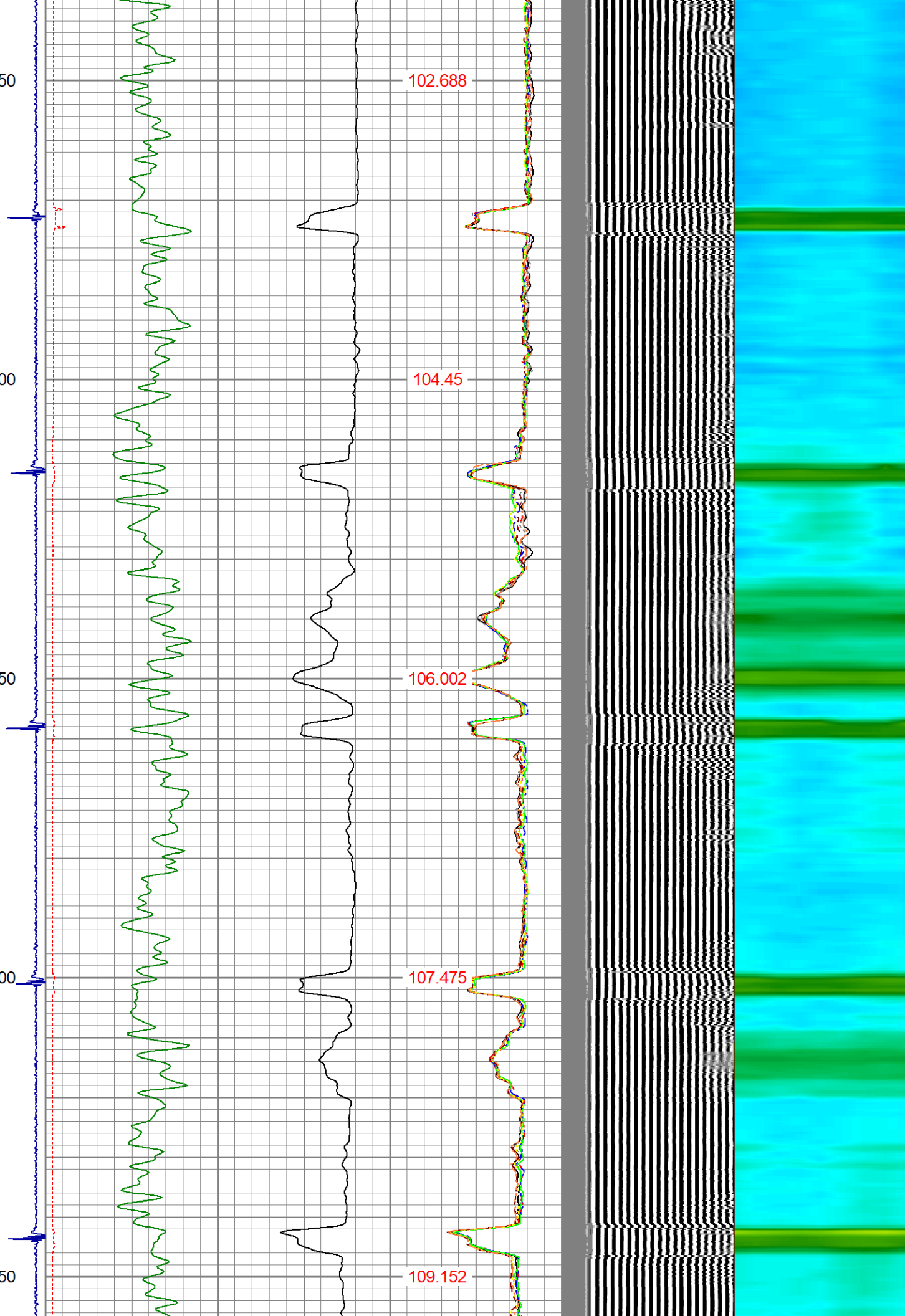
106.002

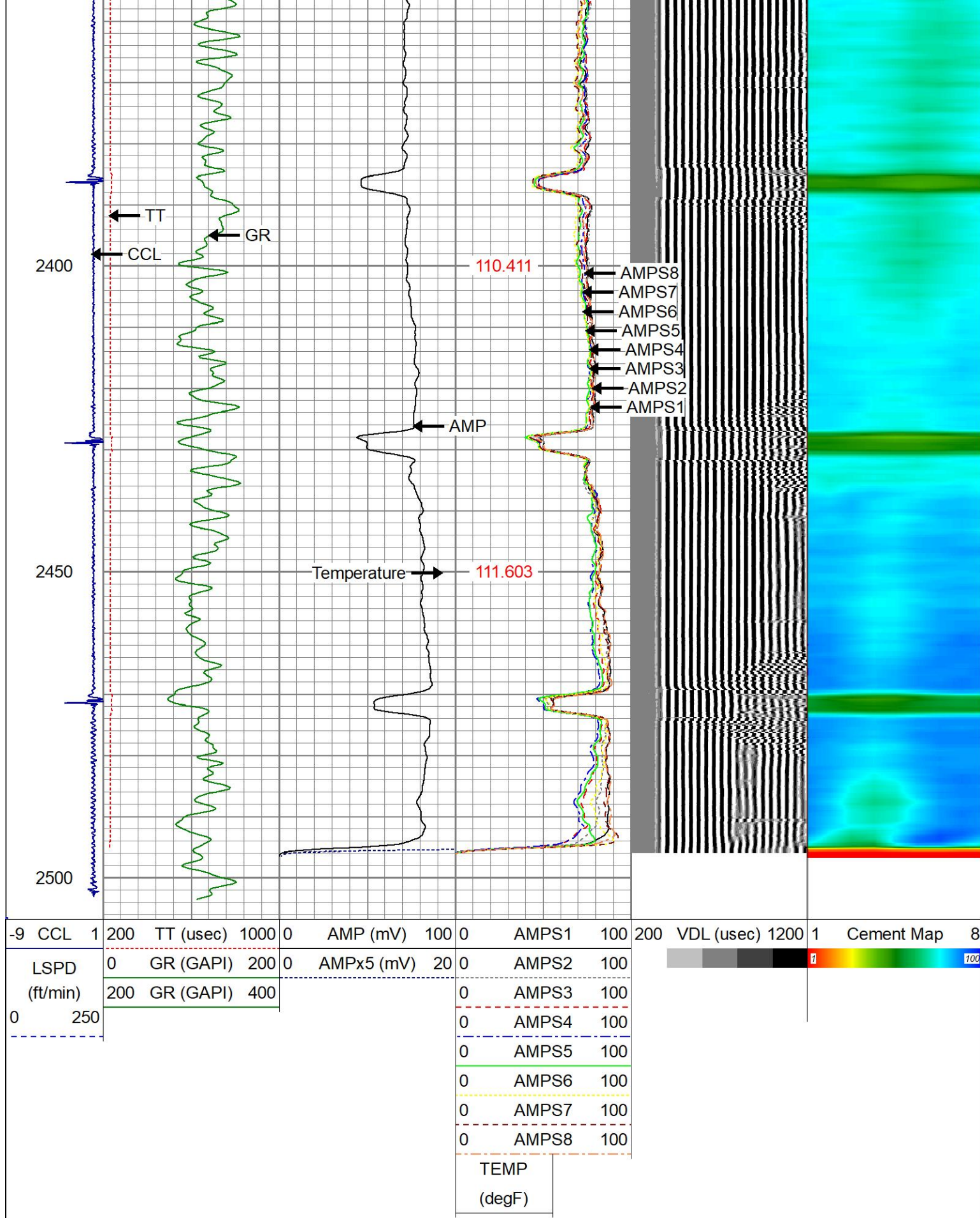
2300

107.475

2350

109.152





Calibration Report

Database File ballantine 3-30 .db
 Dataset Pathname pass8
 Dataset Creation Mon Aug 30 08:11:27 2021

Gamma Ray Calibration Report						
Serial Number:	27GRL10-XXXX					
Tool Model:	27GRL10					
Performed:	(Not Performed)					
Calibrator Value:	1.0	GAPI				
Background Reading:	0.0	cps				
Calibrator Reading:	1.0	cps				
Sensitivity:	1.0000	GAPI/cps				
Segmented Cement Bond Log Calibration Report						
Serial Number:	Greeley Ext Temp					
Tool Model:	27SBT10					
Calibration Casing Diameter:	4.500	in				
Calibration Depth:	1893.550	ft				
Master Calibration, performed Mon Aug 30 08:07:27 2021:						
	Raw (v)		Calibrated (mv)		Results	
	Zero	Cal	Zero	Cal	Gain	Offset
3'	0.008	0.854	1.000	81.196	94.832	0.207
CAL	1.490	1.031				
5'	0.017	0.773	1.000	81.196	106.092	-0.766
SUM						
S1	0.009	0.808	0.000	81.196	101.642	-0.923
S2	0.015	0.890	0.000	81.196	92.772	-1.360
S3	0.016	0.916	0.000	81.196	90.275	-1.477
S4	0.015	0.891	0.000	81.196	92.737	-1.414
S5	0.011	0.853	0.000	81.196	96.512	-1.110
S6	0.009	0.839	0.000	81.196	97.786	-0.890
S7	0.008	0.815	0.000	81.196	100.603	-0.811
S8	0.008	0.800	0.000	81.196	102.597	-0.854
Internal Reference Calibration, performed (Not Performed):						
	Raw (v)		Calibrated (v)		Results	
	Zero	Cal	Zero	Cal	Gain	Offset
CAL	0.000	0.000	1.490	1.031	1.000	0.000
Air Zero Calibration, performed Mon Aug 30 07:34:38 2021:						
	Raw (v)		Calibrated (v)		Results	
	Zero		Zero			Offset
3'	0.000		0.000			0.000
5'	0.000		0.000			0.000
SUM						
S1	0.000		0.000			0.000
S2	0.000		0.000			0.000
S3	0.000		0.000			0.000
S4	0.000		0.000			0.000
S5	0.000		0.000			0.000
S6	0.000		0.000			0.000
S7	0.000		0.000			0.000
S8	0.000		0.000			0.000



Well Services
E - L I N E

Company	OCCIDENTAL PETROLEUM CO		
Well	BALLANTINE 3-30		
Field	WATTENBERG		
County	WELD		
State	CO	Country	USA