

FREMONT ENVIRONMENTAL INC.

December 3, 2021

Mr. Jason Davidson
Great Western Operating Company, LLC
1001 17th Street, Suite 2000
Denver, CO 80202

Subject: **Flow Line Closure Submittal**
 Heinze 31-44 Flow Line
 API # 05-123-24929
 SESE Sec 31, T7N, R63W
 Weld County, Colorado
 Facility #465757, Remediation #16818
 Fremont Project No. C021-016

Dear Mr. Davidson:

As you requested, Fremont Environmental Inc. (Fremont) personnel conducted facility closure activities for the Great Western Heinze 31-44 flow line on November 15th and 16th, 2021. Facility closure sampling of the well head was completed by Fremont in April 2021. The flow line was left in place until after the landowner could harvest crop.

The flow line was observed to be in good condition and hydrocarbon impacts were not observed. Please see the attached Flow Line Facility Closure Check List and Photo Documentation.

Due to the proximity to operating facilities at the production site. A short section of the flow line was left in place beneath the existing separator and associated facility lines. That section will be removed during facility closure activities at a later date. Approximately 65 feet of flow line remains in the subsurface beneath.

Please contact me at (303) 956-8714 if you require any additional information. Fremont appreciates the opportunity to provide this service.

Sincerely,

FREMONT ENVIRONMENTAL INC.



Paul V. Henehan, P.E.
Senior Consultant

Attachments:

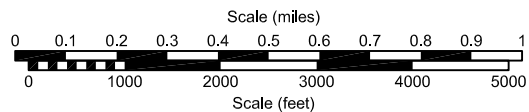
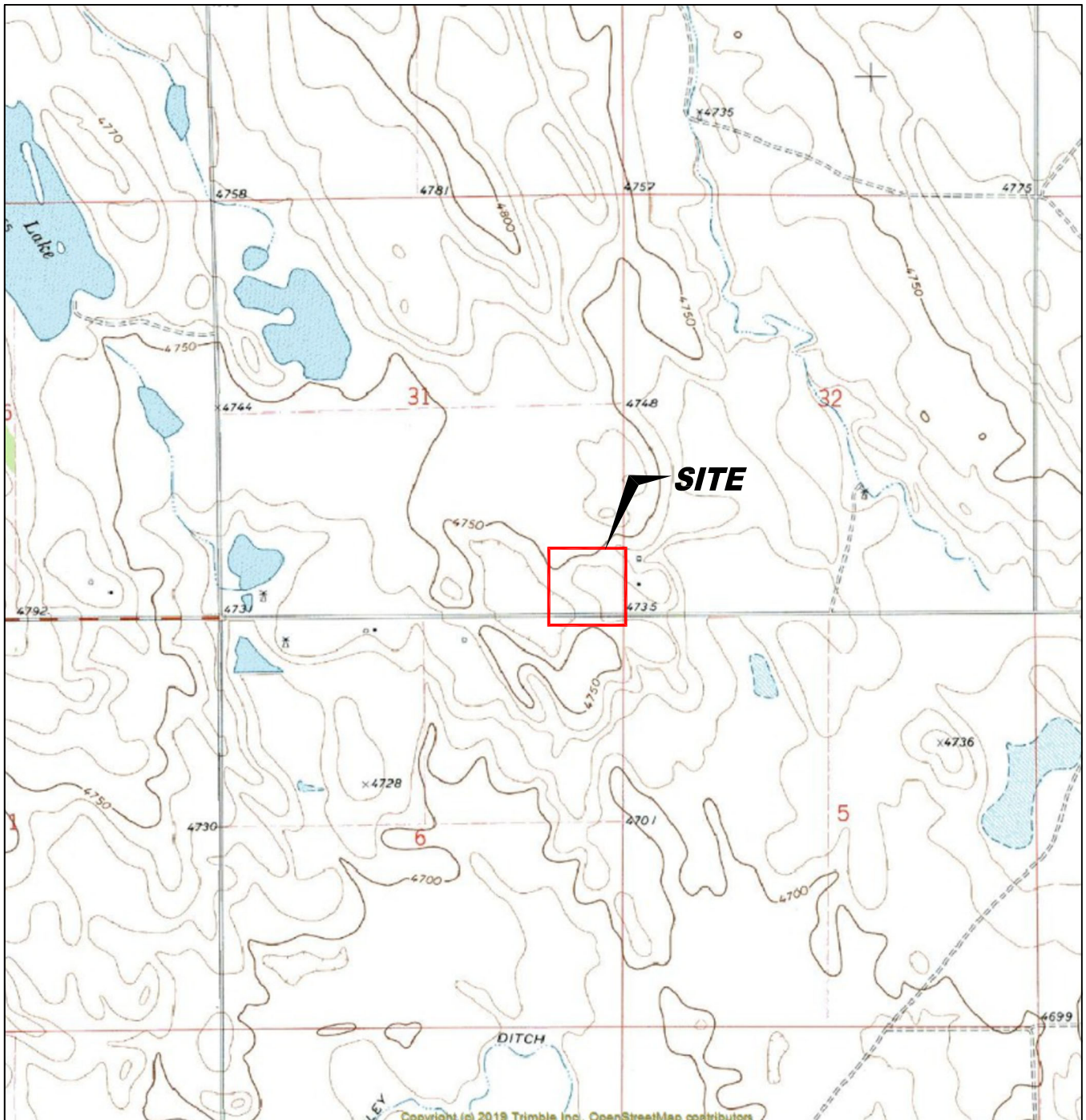
Flow Line Closure Checklist
Figures
Photo Document

**1759 REDWING LANE, BROOMFIELD, CO 80020
(303) 956-8714 (DIRECT)**

Flowline Closure Checklist

COGCC Rule 911.a.(4) Environmental Site Closure Assessment Field Form

| | | | | | | | | |
|---|--|-------------------------------|--|------------------|---|-------------|--|-------------------------------------|
| Additional Attachments: | | Tank Battery Closure | | Wellhead Closure | | Pit Closure | | Partially Buried Vault Closure |
| Site Name & COGCC Facility Number: Heinze-31-44 & 465757 | | Date: 11/15-16/2021 | | | | | | Remediation Project #: 16818 |
| Associated Wells: Heinze # 31-44 | | Age of Site: 8/24/2008 | | | | | | Number of Photos Attached: 5 |
| Starting point: (GPS coordinates and descriptions) (40.524860 / -104.472330)- Wellhead Heinze-31-44- ID#-306570 | | | | | | | | |
| End point: (GPS coordinates and descriptions) 40.52477,-104.475137) - Production Facility - HEINZE-67N63W- ID#- 417318 | | | | | | | | |
| USCS Soil Type: Silty sand | | | | | Estimated Depth to Groundwater: NF | | | |
| Hydrocarbon Impacted Soils / Spills: (Note estimated size and if impact appears to be surficial or extends to an unknown depth) None observed, No odor, No Staining. PID - 0.0 | | | | | | | | |
| Salt Crusted Soils or Impacted Vegetation: (Note estimated size and if impact appears to be surficial or extends to an unknown depth) None observed, Surface in good condition. | | | | | | | | |
| Flowlines | | | | | | | | |
| Flowline type | wellhead | | | | | | | |
| Depth | 4-5' bgs | | | | | | | |
| Age | 2008 | | | | | | | |
| Length | Approx-730' | | | | | | | |
| Construction Material | Steel | | | | | | | |
| Were flowlines pulled? | Yes, partially. 65 ft left in ground until separator and ancillary equipment is removed | | | | | | | |
| Visual Integrity of lines | Good Condition | | | | | | | |
| Visual impacts if trenched | No Staining | | | | | | | |
| PID Readings if trenched | 0.0 | | | | | | | |
| Sample taken? Location/Sample ID# | None | | | | | | | |
| Photo Number(s) | 1-6 | | | | | | | |
| Other observations regarding on location flowlines: Segment of the flow line left in place. Section could not be removed due to site constraints including: operating separator, dump and flow lines from adjacent facilities. GWOC to abandon remaining flow line at later date. Approximately 65' remain in subsurface. | | | | | | | | |
| Summary | | | | | | | | |
| Was impacted soil identified? X No Yes - less than 10 cubic yards Yes - more than 10 cubic yards | | | | | | | | |
| Total number of samples field screened: Six (6) | | | | | Total number of samples collected: 6 | | | |
| Highest PID Reading: 0.0 | | | | | Total number of samples submitted to lab for analysis: 0 | | | |
| If more than 10 cubic yards of impacted soil were observed: None observed | | | | | | | | |
| Vertical extent: NA | | | | | Estimated spill volume: NA | | | |
| Lateral extent: NA | | | | | Volume of soil removed: NA | | | |
| Is additional investigation required? NA | | | | | | | | |
| Was groundwater encountered during the investigation? X No Yes - not impacted or in contact with impacted soils Yes - groundwater impacted and/or in contact with impacted soils | | | | | | | | |
| Measured depth to groundwater: Not found | | | | | Was remedial groundwater removal conducted? Yes X No | | | |
| Date Groundwater was encountered: Not encountered | | | | | Commencement date of removal: NA | | | |
| Sheen on groundwater? Yes X No | | | | | Volume of groundwater removed prior to sampling: NA | | | |
| Free product observed? Yes X No | | | | | Volume of groundwater removed post sampling: NA | | | |
| Total number of samples collected: NA | | | | | Total Volume of groundwater removed: NA | | | |
| Total number of samples submitted to lab for analysis: NA | | | | | | | | |



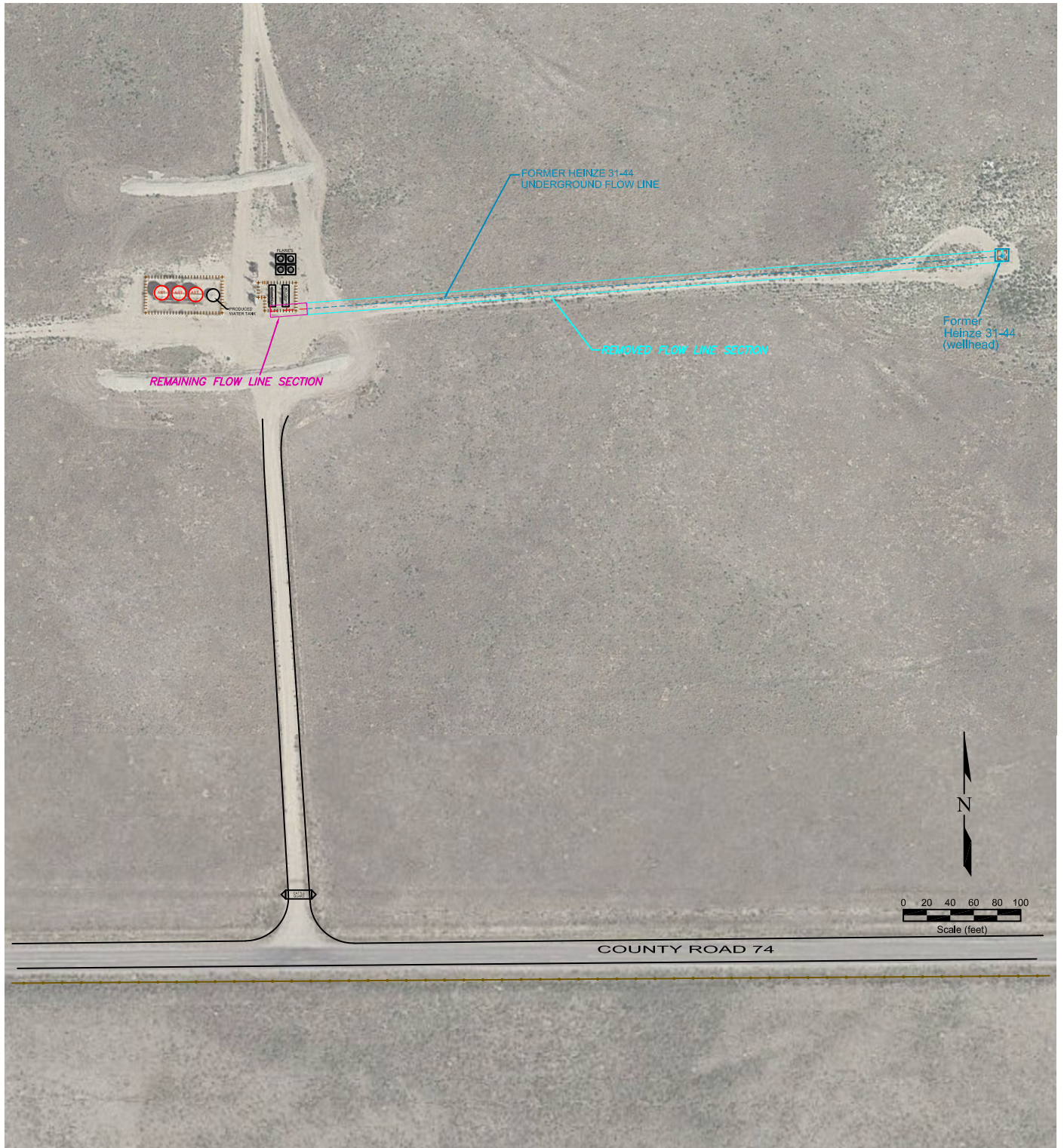
USGS 7.5 MINUTE SERIES (TOPOGRAPHIC)

Figure 1
SITE LOCATION MAP

Great Western Operating Company
Heinze 31-44 Wellhead & Flow Line
SESE Sec. 31, T7N, R63W 6th PM
Weld County, Colorado

| | | |
|-----------------------------------|-----------------------------------|------------------------------|
| Project Number C021-016 | API Number 05-123-24929 | Facility ID 465757 |
| Date 12/03/21 | Reviewed by NL | Filename 21016T |





LEGEND

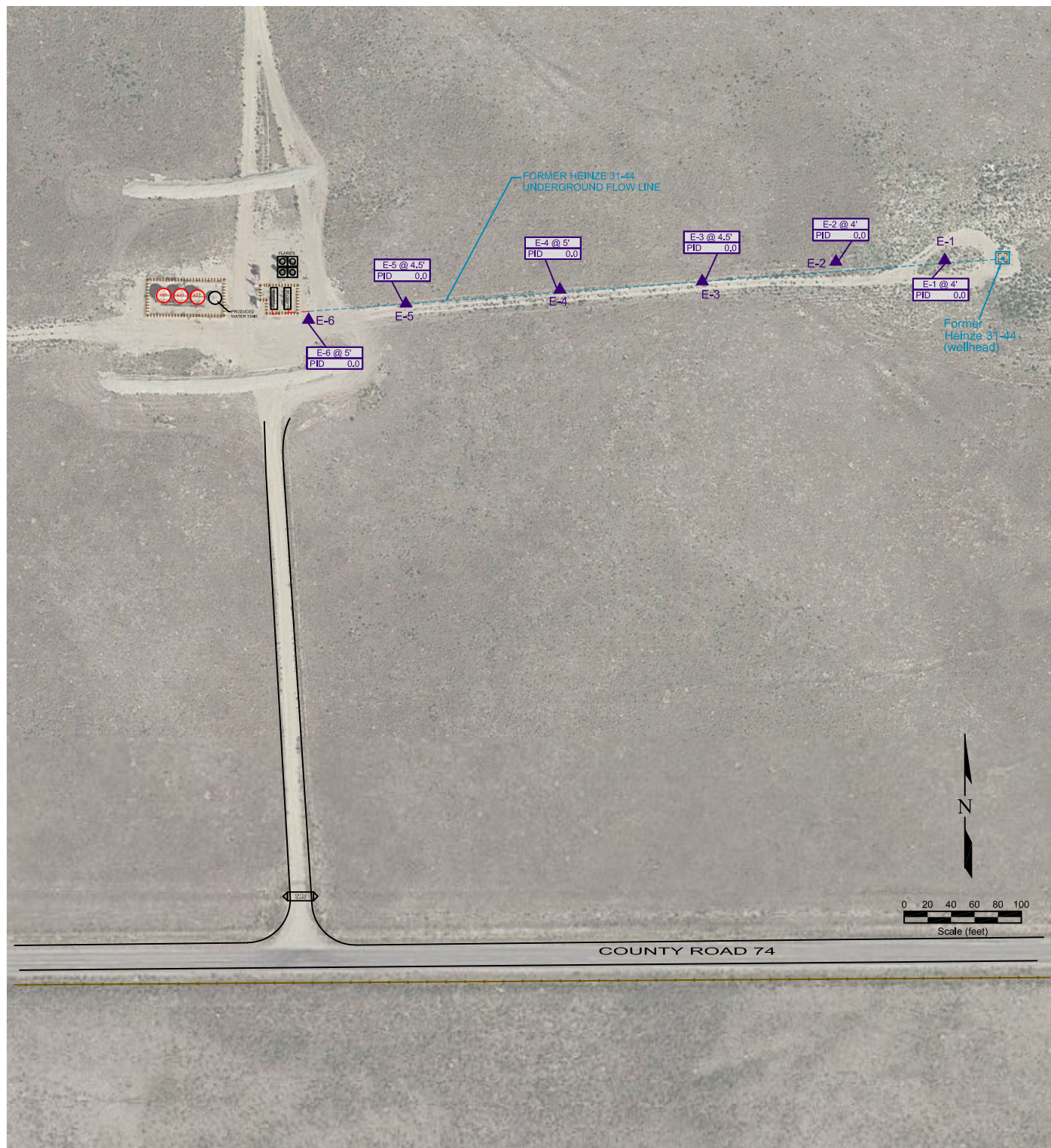
- WELLHEAD LOCATION
- ABOVE GROUND STORAGE TANK
- FORMER FORMER FACILITY
- FENCE LINE
- ||||| CONTAINMENT BERM
- CONTAINMENT WALL
- - - - - EXTENT OF EXCAVATION
- - - - - UNDERGROUND FLOW LINE
- - - - - REMOVED FLOW LINE SECTION
- REMAINING FLOW LINE SECTION

Figure 2
FLOW LINE REMOVAL

Great Western Operating Company
Heinze 31-44 Wellhead & Flow Line
SESE Sec. 31, T7N, R63W 6th PM
Weld County, Colorado

| | | |
|-----------------------------------|-----------------------------------|------------------------------|
| Project Number C021-016 | API Number 05-123-24929 | Facility ID 465757 |
| Date 12/03/21 | Reviewed by NL | Filename 21016Q |





LEGEND

| | | | |
|--------|---------------------------|------------------|------------------------|
| ● | WELLHEAD LOCATION | E-1 @ 4' PID 0.0 | SAMPLE ID & DEPTH (ft) |
| ▲ | PID SAMPLE LOCATION | PID 0.0 | PID READING (ppm) |
| ○ | ABOVE GROUND STORAGE TANK | | |
| FORMER | FORMER FACILITY | | |
| — | FENCE LINE | | |
| | CONTAINMENT BERM | | |
| — | CONTAINMENT WALL | | |
| - - - | EXTENT OF EXCAVATION | | |
| - - - | UNDERGROUND FLOW LINE | | |

Figure 3
FLOW LINE REMOVAL PID READINGS

Great Western Operating Company
Heinze 31-44 Wellhead & Flow Line
SESE Sec. 31, T7N, R63W 6th PM
Weld County, Colorado

| | | |
|-----------------------------------|-----------------------------------|------------------------------|
| Project Number C021-016 | API Number 05-123-24929 | Facility ID 465757 |
| Date 12/03/21 | Reviewed by NL | Filename 21016Q |



PID = PHOTO IONIZATION DETECTOR / (ppm) = PARTS PER MILLION

Heinze Flowline removal- Wellhead 31-44 November 15-16, 2021.

E1- Facing southeast PID-0.0



E2 – Facing west PID 0.0



Heinze Flowline removal- Wellhead 31-44 November 15-16, 2021.

E-3 -Facing northwest- PID-0.0



E-4 – Facing Southeast PID-0.0



Heinze Flowline removal- Wellhead 31-44 November 15-16, 2021.

E-6 Facing southwest- PID 0.0 End of removed section. Portion remains in subsurface, capped at separator.

