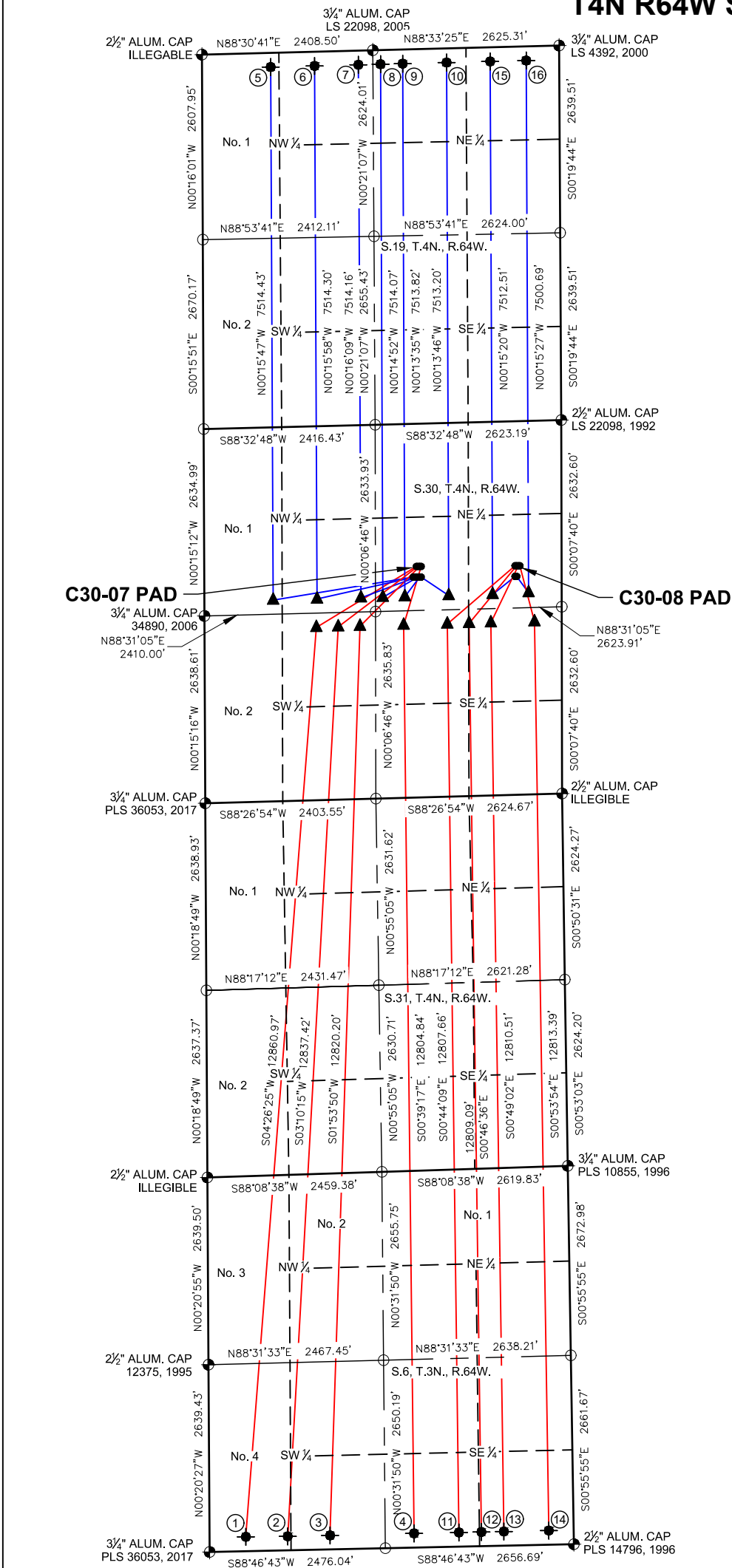
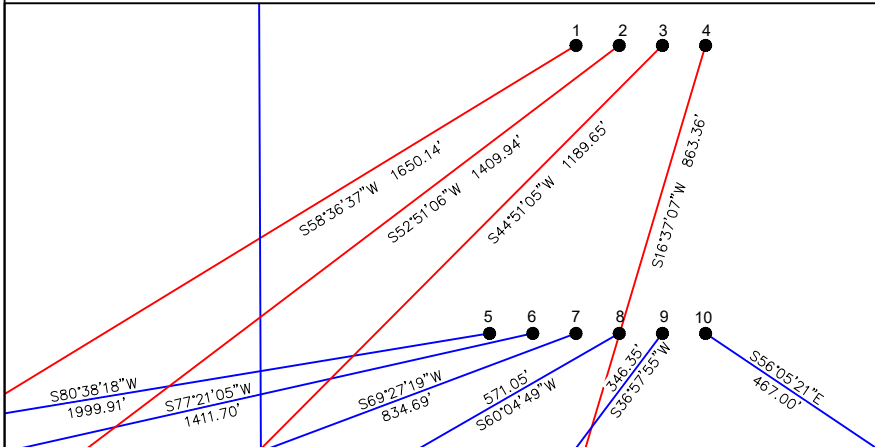


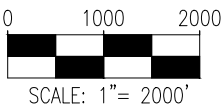
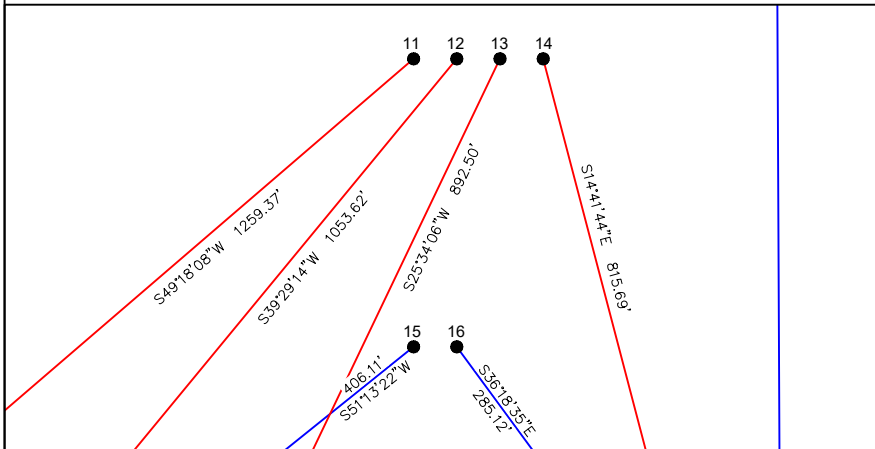
C30-07 PAD & C30-08 PAD
MULTI-WELL LOCATION PLAT / MULTI-WELL PLAN
T4N R64W SECTION 30



PROPOSED WELLBORE DIRECTION DATA
C30-07 PAD
SLOTS 1-10



PROPOSED WELLBORE DIRECTION DATA
C30-08 PAD
SLOTS 11-16



- LEGEND**
- FOUND MONUMENT
 - CALCULATED POSITION
 - PROPOSED WELL
 - BOTTOM HOLE
 - TOP OF PRODUCTION ZONE

- Notes:**
- All bearings are Grid Bearings of the Colorado State Plane Coordinate System, North Zone, North American Datum 1983/2011. The lineal dimensions as shown herein are grid distances based upon the "U.S. Survey Foot." To get ground distances multiply shown distance by 1.0002717.
 - Distances are measured at 90° from section line of the Sixth Principal Meridian, County of Weld, State of Colorado.
 - Ground elevations are based on an observed GPS elevation (NAVD 1988 DATUM).
 - Surface use: "RANGELAND"
 - Instrument Operator: Ryan Desmond
 - This map does not represent a boundary survey.

DISCLAIMER:
THIS PLOT DOES NOT REPRESENT A MONUMENTED LAND SURVEY AND SHOULD NOT BE RELIED UPON TO DETERMINE BOUNDARY LINES, PROPERTY OWNERSHIP OR OTHER PROPERTY INTERESTS. PARCEL LINES, IF DEPICTED HAVE NOT BEEN FIELD VERIFIED AND MAY BE BASED UPON PUBLICLY AVAILABLE DATA THAT ALSO HAS NOT BEEN INDEPENDENTLY VERIFIED.

SURFACE HOLE LOCATION							TOP OF PRODUCTIVE ZONE		BOTTOM HOLE LOCATION	
SLOT	WELL NAME	LATITUDE	LONGITUDE	FOOTAGE		QTR-QTR	ELEV.	FOOTAGE		FOOTAGE
1	JOHNSON D06-785	40.28505°N	104.59157°W	2011' FNL	2046' FEL	SWNE	4877'	2435' FSL	1576' FWL	200' FSL 510' FWL
2	JOHNSON D06-777	40.28505°N	104.59149°W	2012' FNL	2023' FEL	SWNE	4878'	2435' FSL	1883' FWL	200' FSL 1103' FWL
3	JOHNSON D06-766	40.28504°N	104.59141°W	2012' FNL	2001' FEL	SWNE	4879'	2434' FSL	2191' FWL	200' FSL 1696' FWL
4	JOHNSON D06-761	40.28504°N	104.59133°W	2013' FNL	1978' FEL	SWNE	4881'	2434' FSL	2227' FEL	200' FSL 2249' FEL
5	JOHNSON C30-775	40.28464°N	104.59174°W	2160' FNL	2091' FEL	SWNE	4876'	2435' FNL	968' FWL	200' FNL 968' FWL
6	JOHNSON C30-766	40.28463°N	104.59166°W	2161' FNL	2068' FEL	SWNE	4876'	2435' FNL	1587' FWL	200' FNL 1586' FWL
7	JOHNSON C30-760	40.28463°N	104.59158°W	2161' FNL	2046' FEL	SWNE	4876'	2434' FNL	2205' FWL	200' FNL 2204' FWL
8	JOHNSON C30-752	40.28463°N	104.59150°W	2162' FNL	2023' FEL	SWNE	4877'	2434' FNL	2519' FEL	200' FNL 2517' FEL
9	JOHNSON C30-743	40.28463°N	104.59142°W	2162' FNL	2001' FEL	SWNE	4877'	2434' FNL	2210' FEL	200' FNL 2205' FEL
10	JOHNSON C30-734	40.28463°N	104.59134°W	2163' FNL	1978' FEL	SWNE	4878'	2433' FNL	1591' FEL	200' FNL 1587' FEL
11	JOHNSON D06-756	40.28503°N	104.58659°W	2037' FNL	655' FEL	SENE	4843'	2433' FSL	1612' FEL	200' FSL 1616' FEL
12	JOHNSON D06-744	40.28503°N	104.58651°W	2037' FNL	633' FEL	SENE	4842'	2433' FSL	1305' FEL	200' FSL 1299' FEL
13	JOHNSON D06-734	40.28503°N	104.58643°W	2038' FNL	610' FEL	SENE	4841'	2433' FSL	997' FEL	200' FSL 983' FEL
14	JOHNSON D06-730	40.28503°N	104.58635°W	2038' FNL	588' FEL	SENE	4840'	2432' FSL	383' FEL	200' FSL 350' FEL
15	JOHNSON C30-725	40.28462°N	104.58660°W	2186' FNL	656' FEL	SENE	4847'	2433' FNL	973' FEL	200' FNL 972' FEL
16	JOHNSON C30-717	40.28462°N	104.58652°W	2187' FNL	633' FEL	SENE	4846'	2421' FNL	465' FEL	200' FNL 464' FEL

8620 Wolff Court
Westminster, CO 80031
(303) 928-7128
www.ascentgeomatics.com

FIELD DATE:
09-15-18

DRAWN BY:
CLP

DRAWING DATE:
09-07-21

CHECKED BY:
IJM

SURFACE LOCATION:
SEC. 30, T4N, R64W, 6TH P.M.
WELD COUNTY, COLORADO

PUBLICLY AVAILABLE DATA SOURCES HAVE NOT BEEN INDEPENDENTLY VERIFIED BY ASCENT.