

Inspection Photos

5/6/2021

Operator: SG INTERESTS I LTD - 77330

Location ID: 414132

Gunnison County, CO

Aaron Trujillo

NW Reclamation Specialist

COGCC



COLORADO
Oil & Gas Conservation
Commission
Department of Natural Resources

Inspection Photos
Operator Name: SG INTERESTS I LTD - 77330
Location ID: 414132



Photo 1: Photo taken from the east end of the production area, facing south. Photos 1-5 provide an overview of the Location from south, southwest, west, northwest to north. Photos also show areas on the southwest end of the Location not needed for production; photo shows areas not needed for production have not been reclaimed.

Inspection Photos
Operator Name: SG INTERESTS I LTD - 77330
Location ID: 414132



Photo 2: See comments under photo 1.

Inspection Photos
Operator Name: SG INTERESTS I LTD - 77330
Location ID: 414132



Photo 3: See comments under photo 1.



Inspection Photos
Operator Name: SG INTERESTS I LTD - 77330
Location ID: 414132



Photo 4: See comments under photo 1.



Inspection Photos
Operator Name: SG INTERESTS I LTD - 77330
Location ID: 414132



Photo 5: See comments under photo 1.



Inspection Photos
Operator Name: SG INTERESTS I LTD - 77330
Location ID: 414132



Photo 6: Photo taken from the southwest corner of the Location, facing north. Photos 6-8 show areas on the southwest corner of the Location have not been reclaimed in accordance with 1003 rules and corrective actions.

Inspection Photos
Operator Name: SG INTERESTS I LTD - 77330
Location ID: 414132



Photo 7: See comments under photo 6.



Inspection Photos
Operator Name: SG INTERESTS I LTD - 77330
Location ID: 414132



Photo 8: See comments under photo 6.



Inspection Photos
Operator Name: SG INTERESTS I LTD - 77330
Location ID: 414132



Photo 9: Photo taken from the southeast corner of the Location. Photo shows slope drain. Previous inspections documented that the slope drain was not been constructed with an appropriate outlet per good engineering practices. Photo shows slope drain has not been constructed with an appropriate outlet.



Inspection Photos
Operator Name: SG INTERESTS I LTD - 77330
Location ID: 414132



Photo 10: Photo taken from the southeast corner of the Location. Photo shows inlet of the slope drain remains filled with sediment and not in proper functioning condition.

Inspection Photos
Operator Name: SG INTERESTS I LTD - 77330
Location ID: 414132



Photo 11: Photo taken from the southwest corner of the Location. Photo shows slope drain. Previous inspections documented that the slope drain was not been constructed with an appropriate outlet per good engineering practices. Photo shows slope drain has not been constructed with an appropriate outlet.



Inspection Photos
Operator Name: SG INTERESTS I LTD - 77330
Location ID: 414132



Photo 12: See comments under photo 11.



Inspection Photos
Operator Name: SG INTERESTS I LTD - 77330
Location ID: 414132



Photo 13: Photo taken from the southwest corner of the Location. Photo shows sediment trap. Previous inspections documented that the sediment trap was not been constructed with an appropriate outlet per good engineering practices. Photo shows outlet has not been constructed with an appropriate outlet.



Inspection Photos
Operator Name: SG INTERESTS I LTD - 77330
Location ID: 414132



20210506

Photo 14: See comments under photo 13..

Inspection Photos
Operator Name: SG INTERESTS I LTD - 77330
Location ID: 414132



Photo 15: See comments under photo 13. Outlet not been installed with a geotextile liner beneath the riprap in accordance with good engineering practice.

Inspection Photos
Operator Name: SG INTERESTS I LTD - 77330
Location ID: 414132



Photo 16: Photo taken from the slopes on the west end of the Location. Previous inspections documented that control measures to protect/stabilize slopes on the Location were missing or insufficient. Photo shows control measures to protect/stabilize slopes on the Location remain missing or insufficient.



Inspection Photos
Operator Name: SG INTERESTS I LTD - 77330
Location ID: 414132



Photo 17: See comments under photo 16.



Inspection Photos
Operator Name: SG INTERESTS I LTD - 77330
Location ID: 414132



Photo 18: Photo taken from the topsoil stockpile on the west end of the Location. Previous inspections documented that control measures to protect/stabilize slopes on the Location were missing or insufficient. Photo shows control measures to protect/stabilize slopes on the Location remain missing or insufficient.

Inspection Photos
Operator Name: SG INTERESTS I LTD - 77330
Location ID: 414132



Photo 19: See comments under photo 18.

Inspection Photos
Operator Name: SG INTERESTS I LTD - 77330
Location ID: 414132

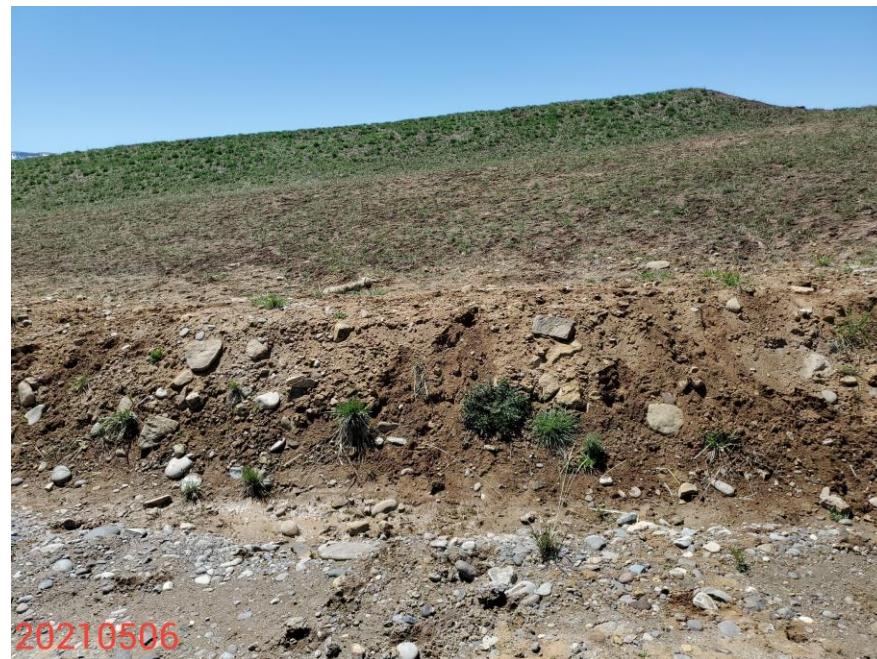


Photo 20: Photos taken from the west end of the Location. Photo shows what appear to be Bull thistle rosettes establishing on the Location.

Inspection Photos
Operator Name: SG INTERESTS I LTD - 77330
Location ID: 414132



Photo 21: Photo taken from the north end of the Location. Previous inspections documented that control measures to protect/stabilize slopes on the Location were missing or insufficient. Photo shows control measures to protect/stabilize slopes on the Location remain missing or insufficient

Inspection Photos
Operator Name: SG INTERESTS I LTD - 77330
Location ID: 414132



Photo 22: See comments under photo 21.

Inspection Photos
Operator Name: SG INTERESTS I LTD - 77330
Location ID: 414132



Photo 23: Photo taken from the northeast end of the Location. Previous inspections documented that control measures to protect/stabilize slopes on the Location were missing or insufficient. Photo shows control measures to protect/stabilize slopes on the Location remain missing or insufficient



Inspection Photos
Operator Name: SG INTERESTS I LTD - 77330
Location ID: 414132



Photo 24: See comments under photo 23.

Inspection Photos
Operator Name: SG INTERESTS I LTD - 77330
Location ID: 414132



Photo 25: See comments under photo 23.

Inspection Photos
Operator Name: SG INTERESTS I LTD - 77330
Location ID: 414132



Photo 26: See comments under photo 23.

