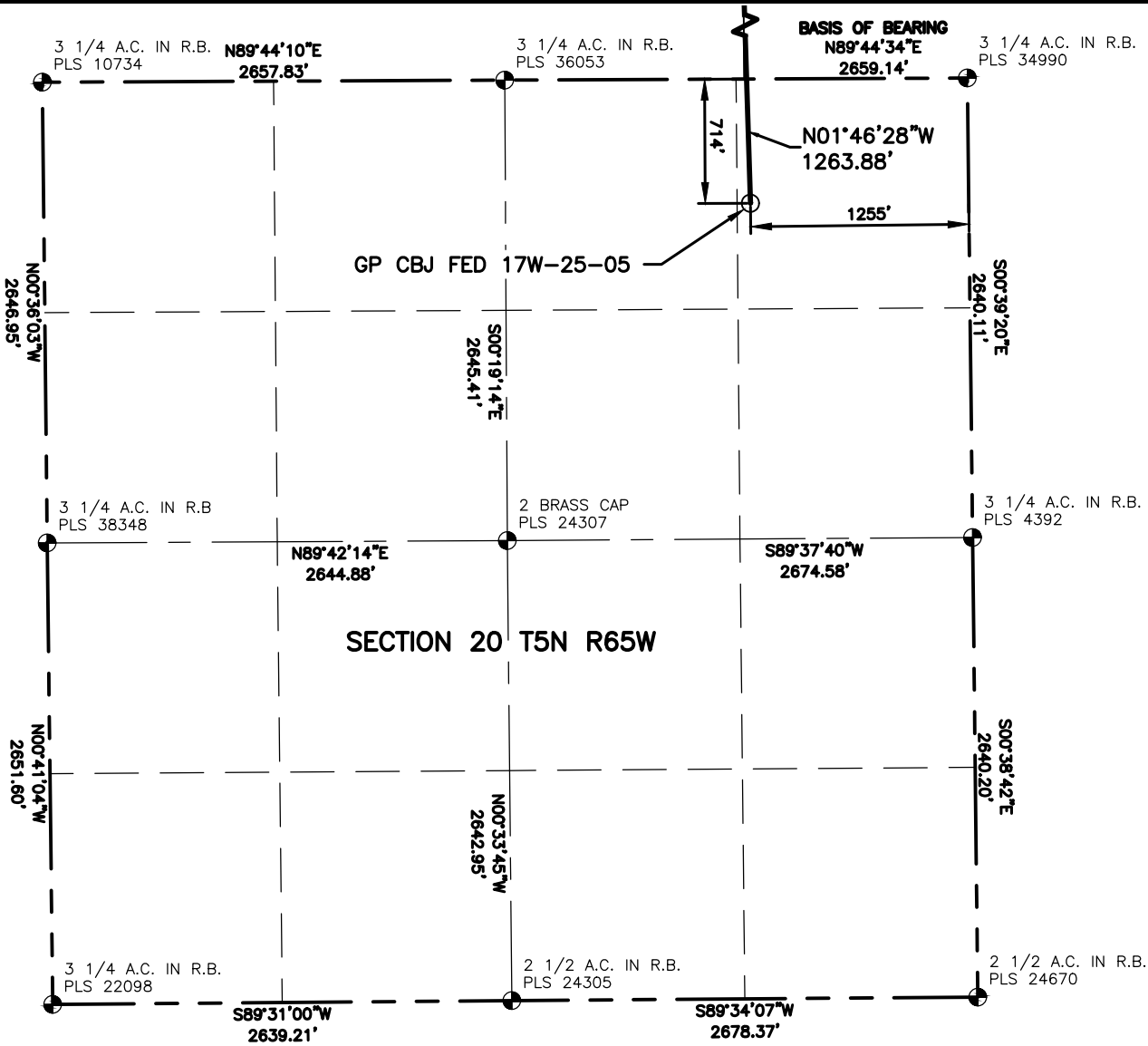


L:\Engineering\0218001.01 XOG - Greeley Directional GP CDA\SURVEY\DRAWINGS\EXHIBITS\CURRENT\GP CBJ FED 17W-25-05-A-NEW.dwg, 3/24/2021 1:19:00 PM, JOSHUA A. CROAK, LAMP RYNEARSON



LAND SURVEYOR'S CERTIFICATION

LAMP RYNEARSON INC., OF FT. COLLINS, COLORADO HAS, IN ACCORDANCE WITH A REQUEST FROM TROY OWENS AT EXTRACTION OIL & GAS, DETERMINED THE SURFACE LOCATION OF THE WELL DESIGNATED AS GP CBJ FED 17W-25-05 TO BE 714' FROM THE NORTH LINE AND 1255' FROM THE EAST LINE OF SECTION 20, TOWNSHIP 5 NORTH, RANGE 65 WEST OF THE 6TH P.M., WELD COUNTY, COLORADO.



MICHAEL G. STRATTON COLORADO PLS 38621
DATE OF SURVEY: 12/17/2019 (SECTION CONTROL)
DATE OF SURVEY: 03/02/2021 (WELL LOCATION)

SURFACE POINT				
LATITUDE	LONGITUDE	ELEVATION	PDOP	OPERATOR
40.389901	-104.682328	4673	1.962	C.WESTHOLMES

LANDING POINT		BOTTOM HOLE	
LATITUDE	LONGITUDE	LATITUDE	LONGITUDE
40.393368	-104.682426	40.393384	-104.641558

SURFACE POINT				LANDING POINT/BEGIN HORIZONTAL COMPLETION ZONE			
714'	FNL	1255'	FEL	550'	FSL	1277'	FEL
BOTTOM HOLE/END HORIZONTAL COMPLETION ZONE				550'	FSL	460'	FEL

NOTES:

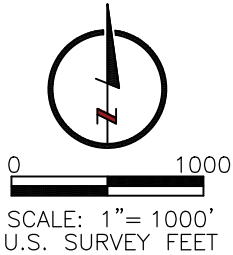
- DISTANCES ARE MEASURED PERPENDICULAR TO NEAREST SECTION LINE AND ARE SHOWN ON THE SAME SIDE OF THE SECTION LINE WHERE THE WELL IS LOCATED.
- THIS MAP DOES NOT REPRESENT A MONUMENTED BOUNDARY SURVEY. SIXTEENTH CORNER LOCATIONS AND LINES ARE COMPUTED, UNLESS OTHERWISE NOTED.
- BOTTOM HOLE LOCATIONS AND HORIZONTAL COMPLETION ZONE PROVIDED BY OTHERS.
- ALL REBAR AND CAPS ARE MEASURED IN INCHES.
- ELEVATIONS ARE BASED ON THE NORTH AMERICAN VERTICAL DATUM OF 1988 AS MEASURED BY GNSS OBSERVATIONS USING GEOID 12A.

BASIS OF BEARING:

THE NORTH LINE OF THE NORTHEAST QUARTER OF SECTION 20-T5N-R65W BEARS NORTH 89°44'34" WEST FOR 2659.14 FEET BETWEEN THE NORTH QUARTER CORNER OF SECTION 20 MONUMENTED WITH A 3-1/4" ALUMINUM CAP STAMPED "PLS 36053" AND THE NORTHEAST CORNER OF SECTION 20 MONUMENTED WITH A 3-1/4" ALUMINUM CAP STAMPED "PLS 34990" SAID BEARING BEING A GRID BEARING OF THE COLORADO STATE PLANE SYSTEM, NORTH ZONE, NORTH AMERICAN DATUM OF 1983.

LEGEND

- COMPUTED ALIQUOT CORNER
- ALIQUOT CORNER
- BOTTOM HOLE
- LANDING POINT
- PROPOSED WELL
- A.C. ALUMINUM CAP
- R.B. RANGE BOX
- B.C. BRASS CAP
- WC WITNESS CORNER



**LAMP
RYNEARSON**

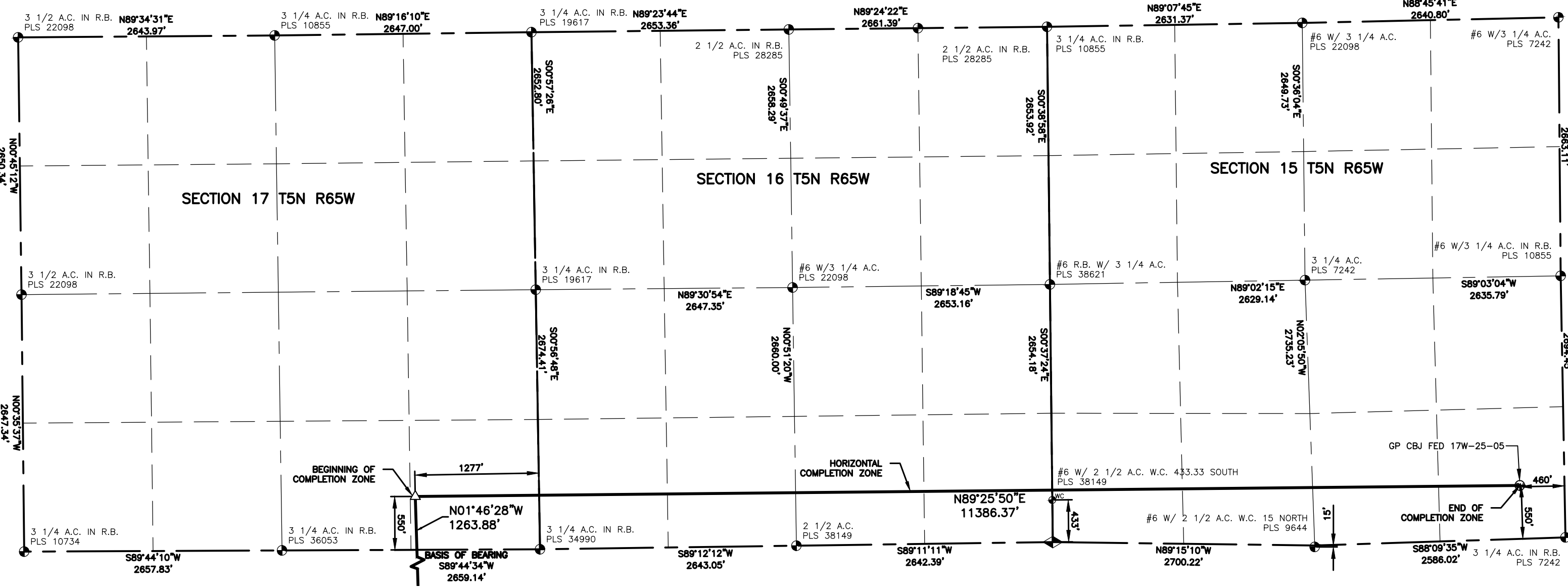
4715 INNOVATION DR., STE. 100
FORT COLLINS, CO 80525
970.226.0342
LampRynearson.com



DESIGNER / DRAFTER
JAIME POMPA
ENGINEER
MICHAEL STRATTON
PROJECT NUMBER
0218001.01
DATE
03/24/2021
SURFACE LOCATION
NE/4 NE/4 SEC20 T5N R65W
BOOK AND PAGE

PROPOSED WELL LOCATION EXHIBIT

GP CBJ FED 17W-25-05



LAND SURVEYOR'S CERTIFICATION
LAMP RYNEARSON INC., OF FT. COLLINS, COLORADO HAS, IN ACCORDANCE WITH A REQUEST FROM TROY OWENS AT EXTRACTION OIL & GAS, DETERMINED THE SURFACE LOCATION OF THE WELL DESIGNATED AS GP CBJ FED 17W-25-05 TO BE 714' FROM THE NORTH LINE AND 1255' FROM THE EAST LINE OF SECTION 20, TOWNSHIP 5 NORTH, RANGE 65 WEST OF THE 6TH P.M., WELD COUNTY, COLORADO.



MICHAEL G. STRATTON COLORADO PLS 38621
DATE OF SURVEY: 12/17/2019 (SECTION CONTROL)
DATE OF SURVEY: 03/02/2021 (WELL LOCATION)

SURFACE POINT				
LATITUDE	LONGITUDE	ELEVATION	PDOP	OPERATOR
40.389901	-104.682328	4673	1.962	C.WESTHOLMES

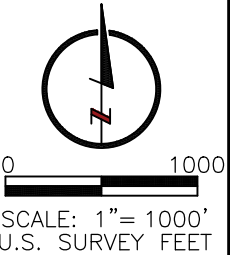
LANDING POINT		BOTTOM HOLE	
LATITUDE	LONGITUDE	LATITUDE	LONGITUDE
40.393368	-104.682426	40.393384	-104.641558

SURFACE POINT				LANDING POINT/BEGIN HORIZONTAL COMPLETION ZONE			
714'	FNL	1255'	FEL	550'	FSL	1277'	FEL
BOTTOM HOLE/END HORIZONTAL COMPLETION ZONE				550'	FSL	460'	FEL

- NOTES:**
- DISTANCES ARE MEASURED PERPENDICULAR TO NEAREST SECTION LINE AND ARE SHOWN ON THE SAME SIDE OF THE SECTION LINE WHERE THE WELL IS LOCATED.
 - THIS MAP DOES NOT REPRESENT A MONUMENTED BOUNDARY SURVEY. SIXTEENTH CORNER LOCATIONS AND LINES ARE COMPUTED, UNLESS OTHERWISE NOTED.
 - BOTTOM HOLE LOCATIONS AND HORIZONTAL COMPLETION ZONE PROVIDED BY OTHERS.
 - ALL REBAR AND CAPS ARE MEASURED IN INCHES.
 - ELEVATIONS ARE BASED ON THE NORTH AMERICAN VERTICAL DATUM OF 1988 AS MEASURED BY GNSS OBSERVATIONS USING GEOID 12A.

BASIS OF BEARING:
THE NORTH LINE OF THE NORTHEAST QUARTER OF SECTION 20-T5N-R65W BEARS NORTH 89°44'34" WEST FOR 2659.14 FEET BETWEEN THE NORTH QUARTER CORNER OF SECTION 20 MONUMENTED WITH A 3-1/4" ALUMINUM CAP STAMPED "PLS 36053" AND THE NORTHEAST CORNER OF SECTION 20 MONUMENTED WITH A 3-1/4" ALUMINUM CAP STAMPED "PLS 34990" SAID BEARING BEING A GRID BEARING OF THE COLORADO STATE PLANE SYSTEM, NORTH ZONE, NORTH AMERICAN DATUM OF 1983.

- LEGEND**
- COMPUTED ALIQUOT CORNER
 - ALIQUOT CORNER
 - BOTTOM HOLE
 - LANDING POINT
 - PROPOSED WELL
 - A.C. ALUMINUM CAP
 - R.B. RANGE BOX
 - B.C. BRASS CAP
 - WC WITNESS CORNER



LAMP RYNEARSON

4715 INNOVATION DR., STE. 100
FORT COLLINS, CO 80525
970.226.0342
LampRyNearson.com



DESIGNER / DRAFTER
JAIME POMPA
ENGINEER
MICHAEL STRATTON
PROJECT NUMBER
0218001.01
DATE
03/24/2021
SURFACE LOCATION
NE/4 NE/4 SEC20 T5N R65W
BOOK AND PAGE

PROPOSED WELL LOCATION EXHIBIT

GP CBJ FED 17W-25-05