

Sec 20, T6S, R96W
GM 431-19
Q201095 & RM-200868
Plan 4

Company Name: Terra Energy Partners, LLP
GM 431-19
Garfield County, CO
Rig: KB=24" @ 5771.90usft (H&P #318)
Created by: Chase Chambers
Date: 2:59, January 03 2021

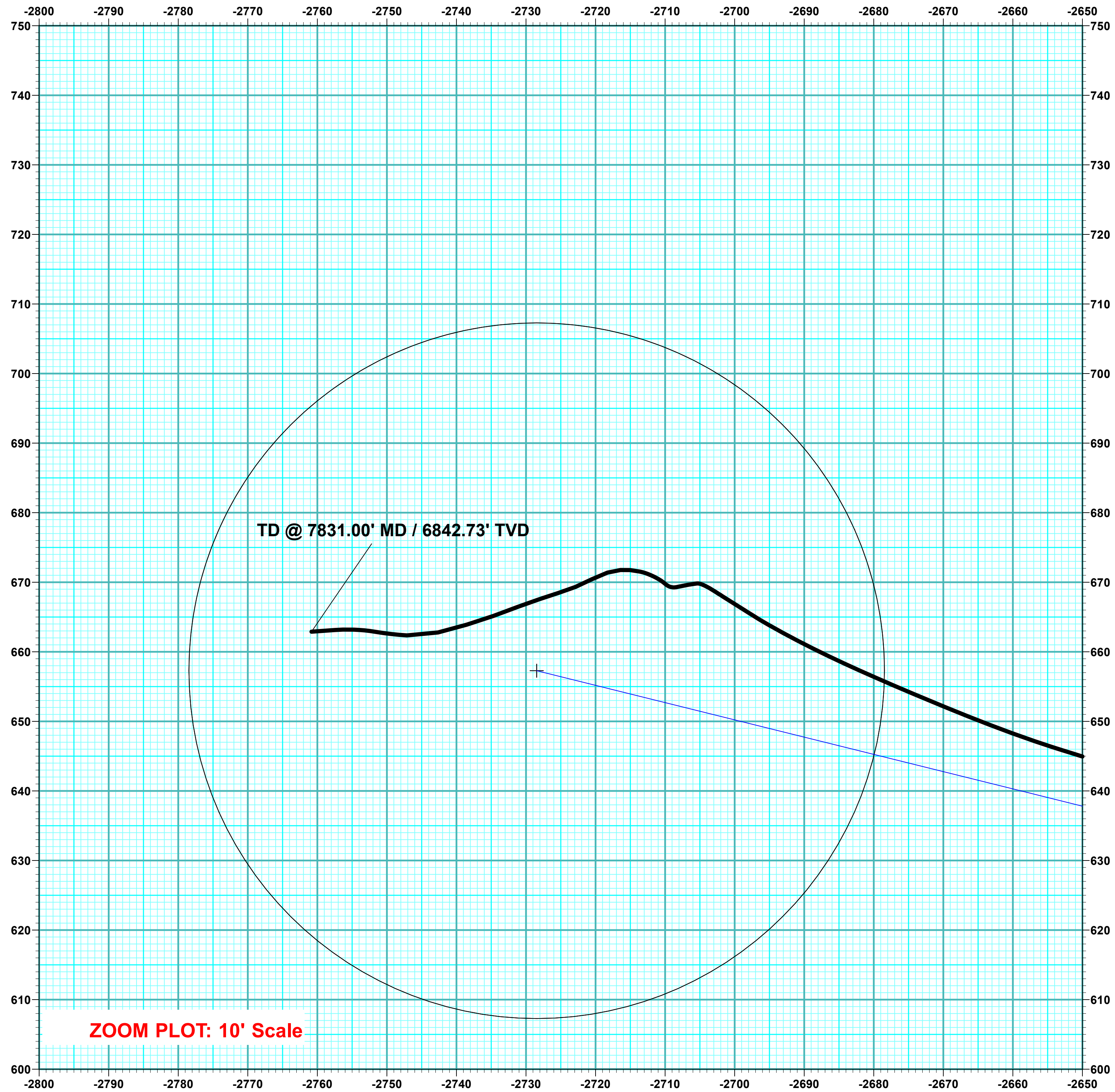
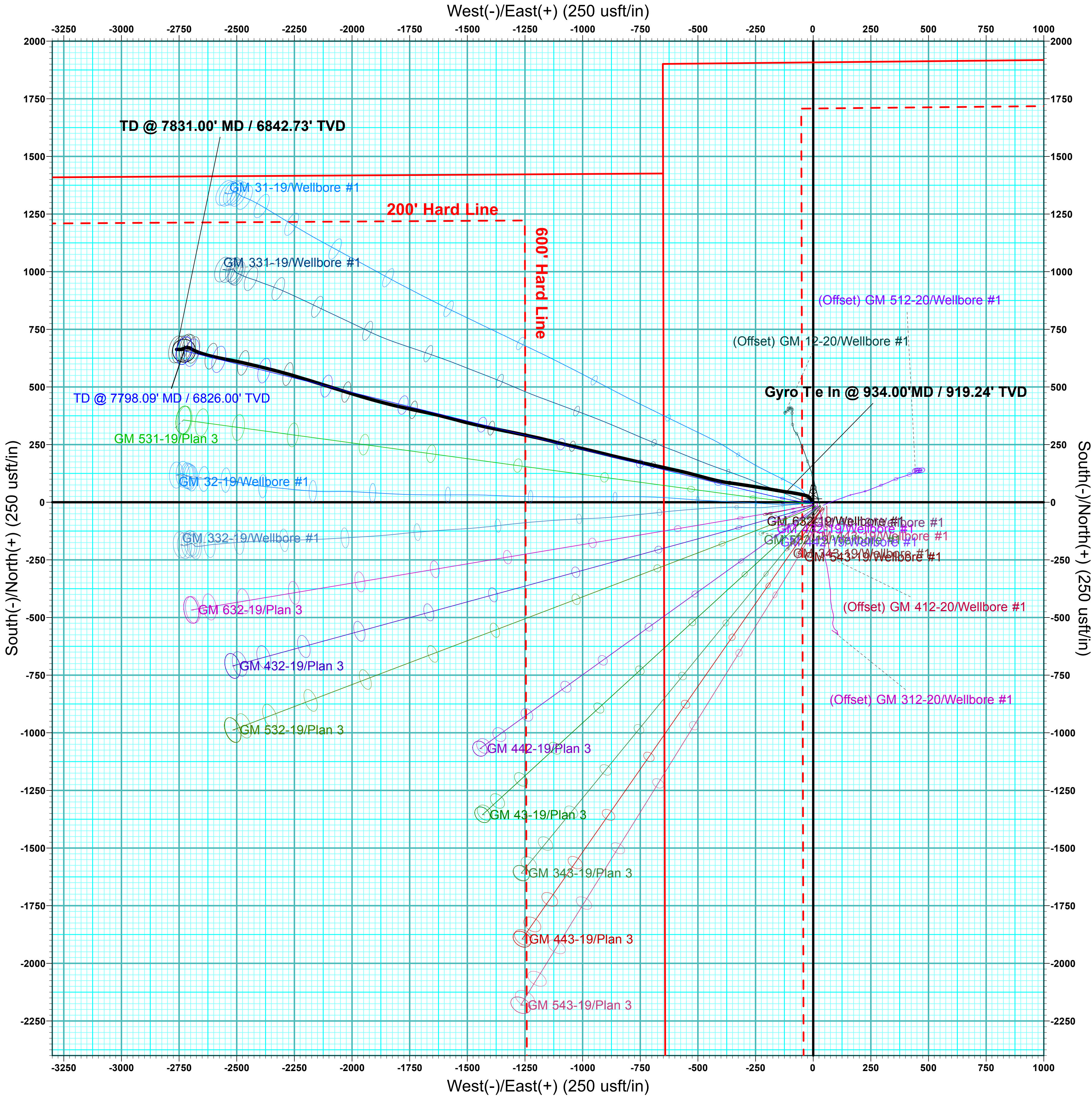
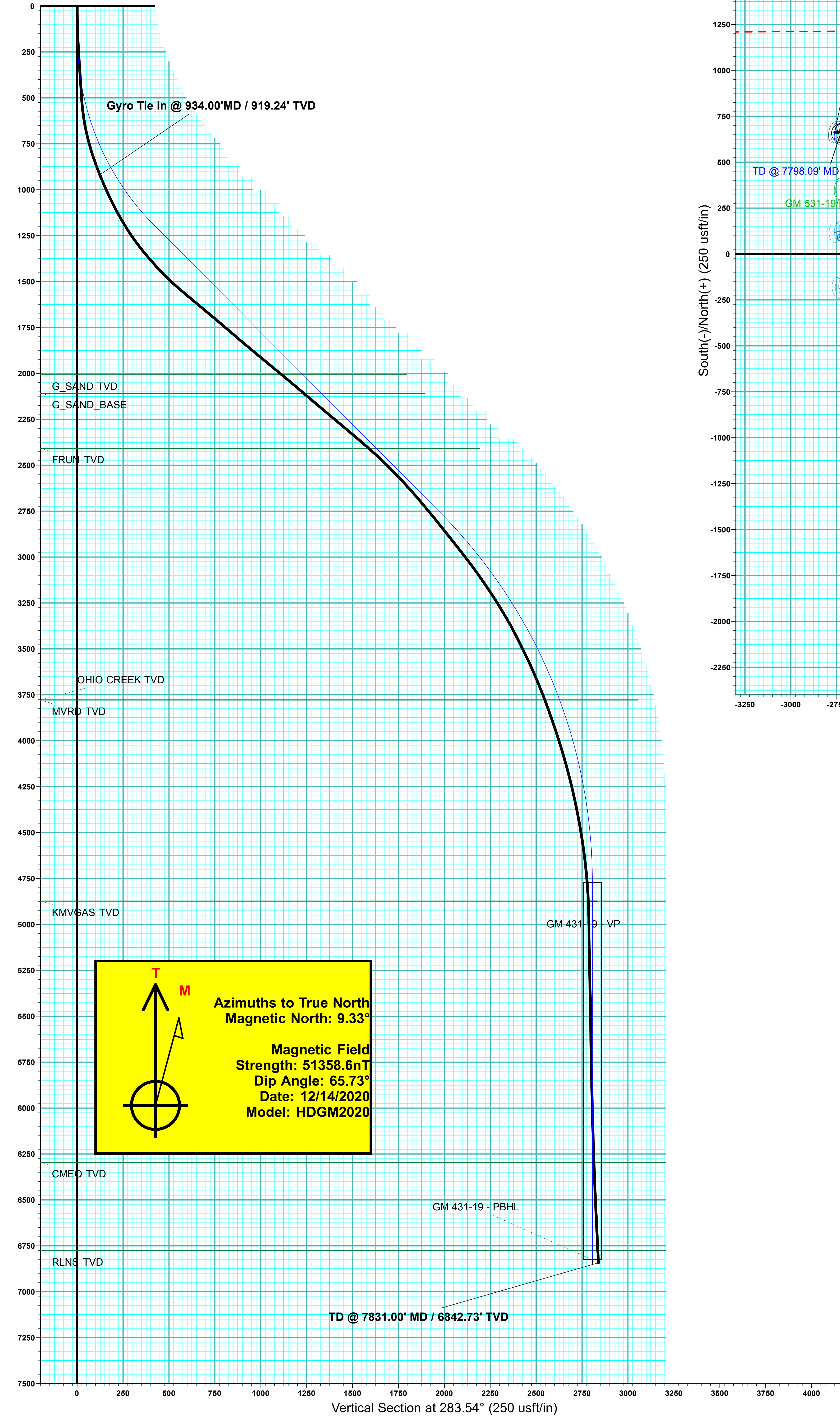
PROJECT DETAILS: Garfield County, CO

Geodetic System: US State Plane 1983
Datum: North American Datum 1983
Ellipsoid: GRS 1980
Zone: Colorado Central Zone
System Datum: Mean Sea Level



WELL DETAILS: GM 431-19						
Ground Elevation:		5747.90				
+N/-S	+E/-W	Northing	Easting	Latitude	Longitude	
0.00	0.00	1622126.83	2255383.71	39.511818	-108.139572	

DESIGN TARGET DETAILS							
Name	TVD	+N/-S	+E/-W	Northing	Easting	Latitude	Longitude
GM 431-19 - VP	4873.00	657.28	-2728.46	1622863.10	2252675.50	39.513622	-108.149243
GM 431-19 - PBHL	6826.00	657.28	-2728.46	1622863.10	2252675.50	39.513622	-108.149243



DESIGN ANNOTATIONS									
MD	Inc	Azi	TVD	+N/-S	+E/-W	VSecDeparture	Annotation		
100.00	0.00	0.00	100.00	0.00	0.00	0.00	Build 3.5"/100'		
185.71	2.65	250.00	185.69	-0.60	-1.65	1.46	EOB @ 3.00° Inc / 250.00° Azm		
235.71	3.00	250.00	235.62	-1.48	-4.08	3.61	Build 4"/100'		
1291.91	44.31	283.90	1184.40	80.41	-402.88	410.51	EOB @ 44.71° Inc / 283.93° Azm		
3509.55	44.77	283.93	2755.48	457.23	-1921.98	1975.61	Drop 2"/100'		
5745.09	0.06	283.93	4770.10	657.28	-2728.46	2806.51	EOD @ Vertical		
7798.09	0.00	0.00	6823.10	657.28	-2728.46	2806.51	TD @ 7798.09' MD / 6826.00' TVD		

ANNOTATIONS									
MD	Inc	Azi	TVD	+N/-S	+E/-W	VSecDeparture	Annotation		
934.00	22.09	278.09	919.24	44.89	-116.27	123.55	Gyro Tie In @ 934.00' MD / 919.24' TVD		
7831.00	2.72	265.97	6842.73	662.90	-2760.84	2839.31	TD @ 7831.00' MD / 6842.73' TVD		