

Sec 20, T6S, R96W
GM 331-19
Q201096 & RM-200869
Plan 3

Company Name: Terra Energy Partners, LLP
GM 331-19
Garfield County, CO
Rig: KB=24" @ 5771.90usft (H&P #318)
Created by: Chase Chambers
Date: 2:26, December 31 2020

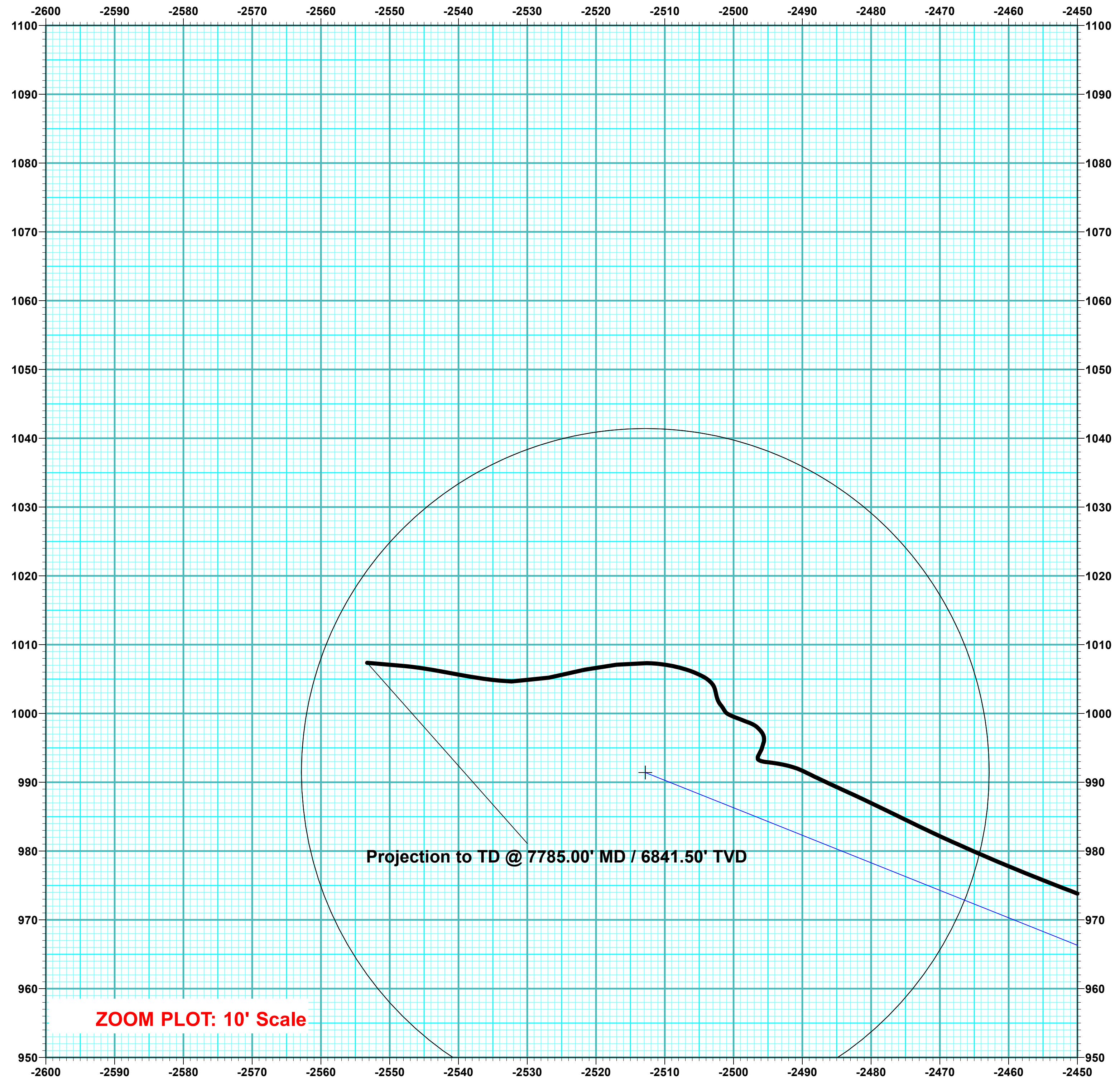
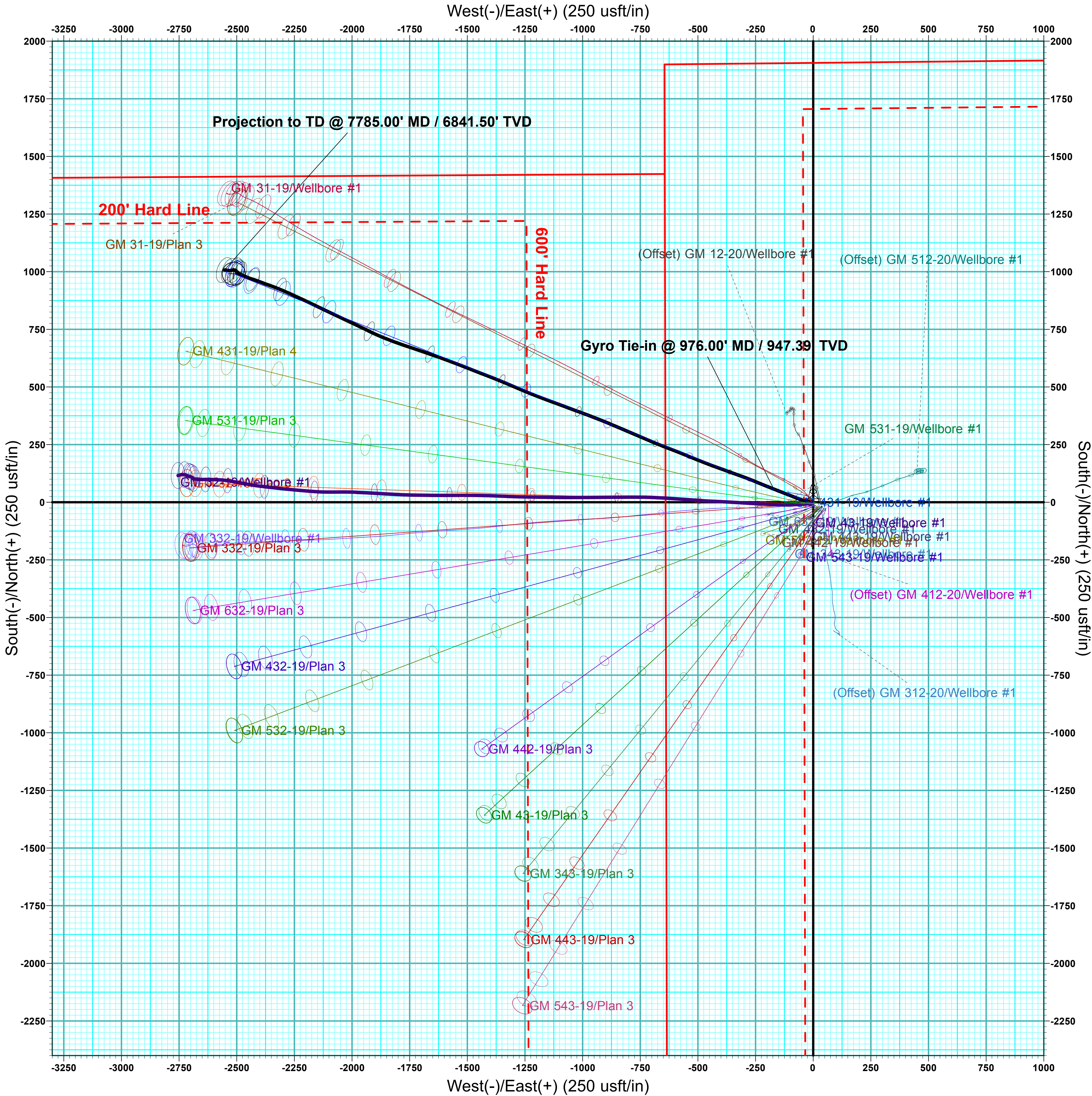
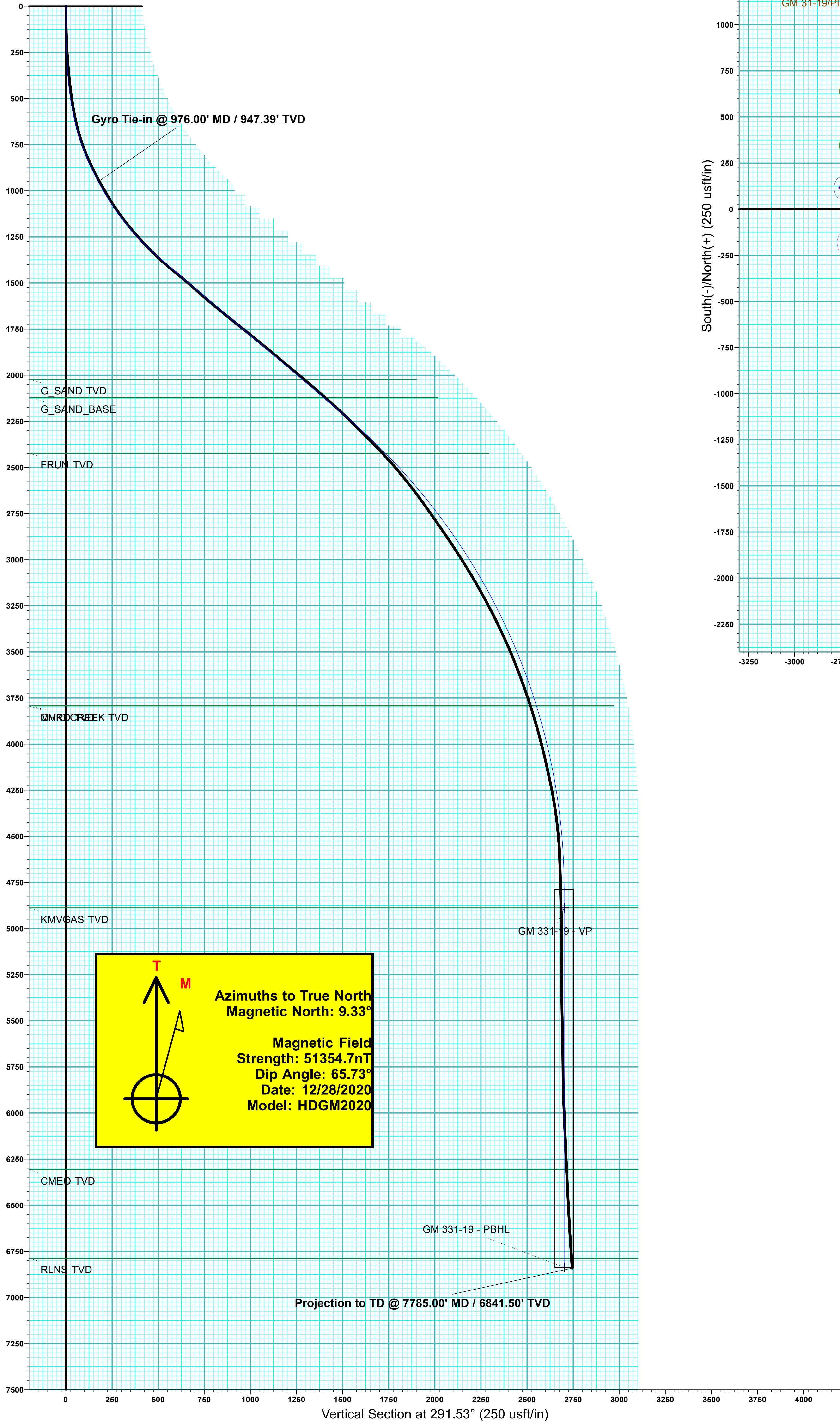
PROJECT DETAILS: Garfield County, CO

Geodetic System: US State Plane 1983
Datum: North American Datum 1983
Ellipsoid: GRS 1980
Zone: Colorado Central Zone
System Datum: Mean Sea Level



WELL DETAILS: GM 331-19						
Ground Elevation:		5747.90				
+N/-S	+E/-W	Northing	Easting	Latitude	Longitude	
0.00	0.00	1622129.10	2255376.56	39.511824	-108.139598	

DESIGN TARGET DETAILS							
Name	TVD	+N/-S	+E/-W	Northing	Easting	Latitude	Longitude
GM 331-19 - VP	4888.00	991.42	-2512.82	1623193.10	2252893.60	39.514546	-108.148504
GM 331-19 - PBHL	6837.00	991.42	-2512.82	1623193.10	2252893.60	39.514546	-108.148504



DESIGN ANNOTATIONS									
MD	Inc	Azi	TVD	+N/-S	+E/-W	VSec	Departure	Annotation	
130.00	0.00	0.00	130.00	0.00	0.00	0.00	0.00	Start Build 3.00	
230.00	3.00	275.00	229.95	0.23	-2.61	2.51	2.62	EOB @ 3.00° Inc / 275.00° Azm	
350.00	3.00	275.00	349.79	0.78	-8.86	8.53	8.90	Start DLS 4.00 TFO 17.58	
1520.40	49.68	291.78	1370.24	179.07	-480.23	512.43	513.07	EOB @ 49.68° Inc / 291.78° Azm	
2830.98	49.68	291.78	2218.23	549.92	-1408.14	1511.70	1512.34	Start Drop -1.70	
5753.46	0.00	0.00	4788.00	991.42	-2512.82	2701.33	2701.98	EOD @ Vertical	
7802.46	0.00	0.00	6837.00	991.42	-2512.82	2701.33	2701.98	TD @ 7802.46' MD / 6837.00' TVD	

ANNOTATIONS									
MD	Inc	Azi	TVD	+N/-S	+E/-W	VSec	Departure	Annotation	
976.00	28.66	291.60	947.39	57.23	-170.84	179.92	181.11	Gyro Tie-in @ 976.00' MD / 947.39' TVD	
7785.00	4.00	274.94	6841.50	1007.36	-2553.28	2744.82	2757.01	Projection to TD @ 7785.00' MD / 6841.50' TVD	