



Well Services
E-LINE

RADIAL CEMENT BOND
GAMMA RAY
CCL LOG

Company NOBLE ENERGY
Well HAMBERT R G 32-6
Field WATTENBURG
County WELD State CO

Location: API # : 05-123-13446

Other Services

SE/NW
LAT. 40.27052 LONG. -104.6899
SEC 32 TWP 4N RGE 65W

Permanent Datum GL
Log Measured From K.B. OF 12' Elevation 4932'
Drilling Measured From KELLY BUSHING
Elevation K.B. 4944'
D.F. 4943'
G.L. 4932'

Date 10-22-2020

Run Number ONE
Depth Driller 7500'
Depth Logger 5000'
Bottom Logged Interval 5000'
Top Log Interval 4100'
Open Hole Size 7 7/8"
Type Fluid WATER
Density / Viscosity 1.0
Max. Recorded Temp. 147°F
Estimated Cement Top 4166'
Time Well Ready ON ARRIVAL
Time Logger on Bottom N/A
Equipment Number 3812
Location GREELEY, CO
Recorded By J. KERR
Witnessed By P. BURNS

Borehole Record
Run Number Bit From To Size Weight From To


Casing Record	Size	Wgt/Ft	Top	Bottom
Surface String	8 5/8"	24 #	SURFACE	303'
Prot. String				
Production String	4.5"	15.10#	SURFACE	7433'
Liner				

<<< Fold Here >>>

All interpretations are opinions based on inferences from electrical or other measurements and we cannot and do not guarantee the accuracy or correctness of any interpretation, and we shall not, except in the case of gross or willful negligence on our part, be liable or responsible for any loss, costs, damages, or expenses incurred or sustained by anyone resulting from any interpretation made by any of our officers, agents or employees. These interpretations are also subject to our general terms and conditions set out in our current Price Schedule.

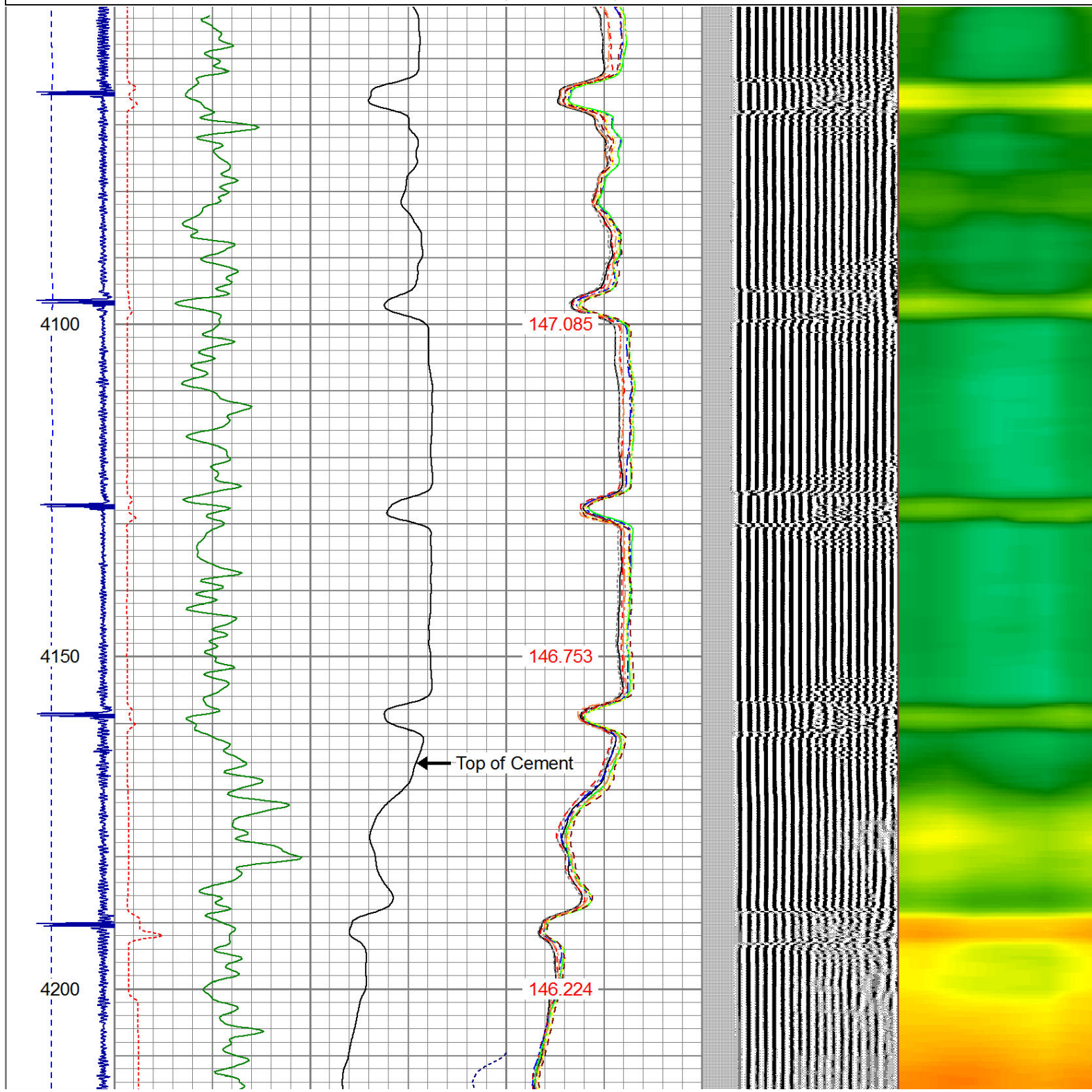
Comments

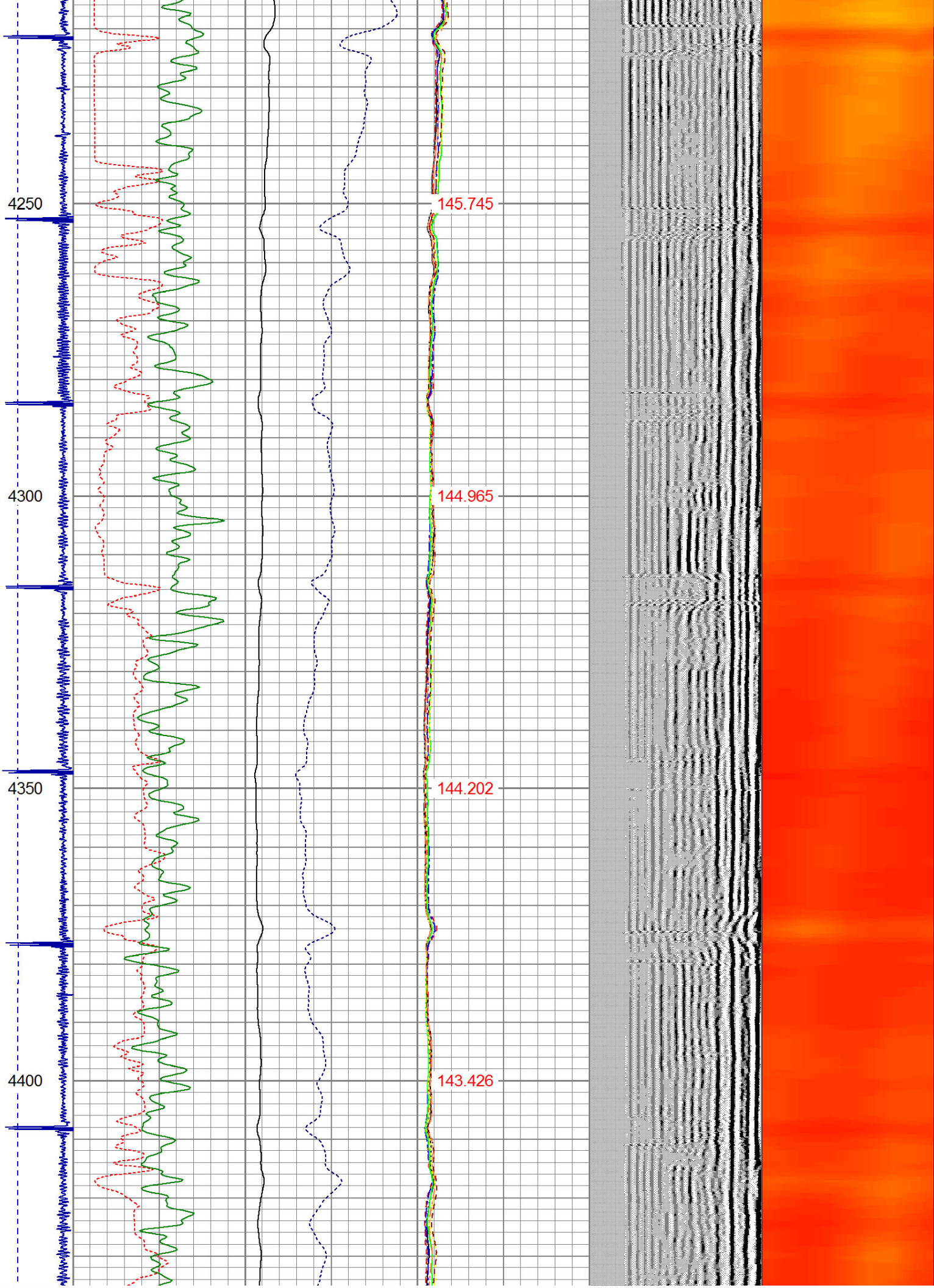
RAN CBL TO VERIFY CEMENT COVERAGE
CEMENT FROM 4765' - 4166'

Sensor	Offset (ft)	Schematic	Description	Len (ft)	OD (in)	Wt (lb)
HEAD/COIL	15.13		1_4	1.00	1.36	5.00

HEADVOLT	10.15					
IntTemp	14.71					
WVF3FT	11.46		RBT-Probe (Base) Probe Radii Bond Tool with Digital Telemetry	8.92	2.75	90.00
WVFCAL	11.46					
WVFS1	11.46					
WVFS2	11.46					
WVFS3	11.46					
WVFS4	11.46					
WVFS5	11.46					
WVFS6	11.46					
WVFS7	11.46					
WVFS8	11.46					
WVF5FT	10.46					
CNLSC	6.00		CNT-Probe_B (275) Bow centralizer	2.88	2.75	40.00
CNSSC	5.17					
CCL	3.64					
GR	0.90		GR-Probe (275) Probe 2.75"	4.33	2.75	30.00
Dataset: hambert r g 32-6.db: field/well/run1/pass2 Total Length: 17.13 ft Total Weight: 165.00 lb O.D. 2.75 in						

-9	CCL	1	200	TT (usec)	1100	0	AMP (mV)	100	0	AMPS1	100	200	VDL	1200	1	Cement Map	8
LSPD			0	GR (GAPI)	200	0	AMPx5 (mV)	20	0	AMPS2	100				1		100
(ft/min)			200	GR (GAPI)	400				0	AMPS3	100						
0		250							0	AMPS4	100						
									0	AMPS5	100						
									0	AMPS6	100						
									0	AMPS7	100						
									0	AMPS8	100						
										IntTemp							
										(degF)							





4450

142.377

4500

141.19

4550

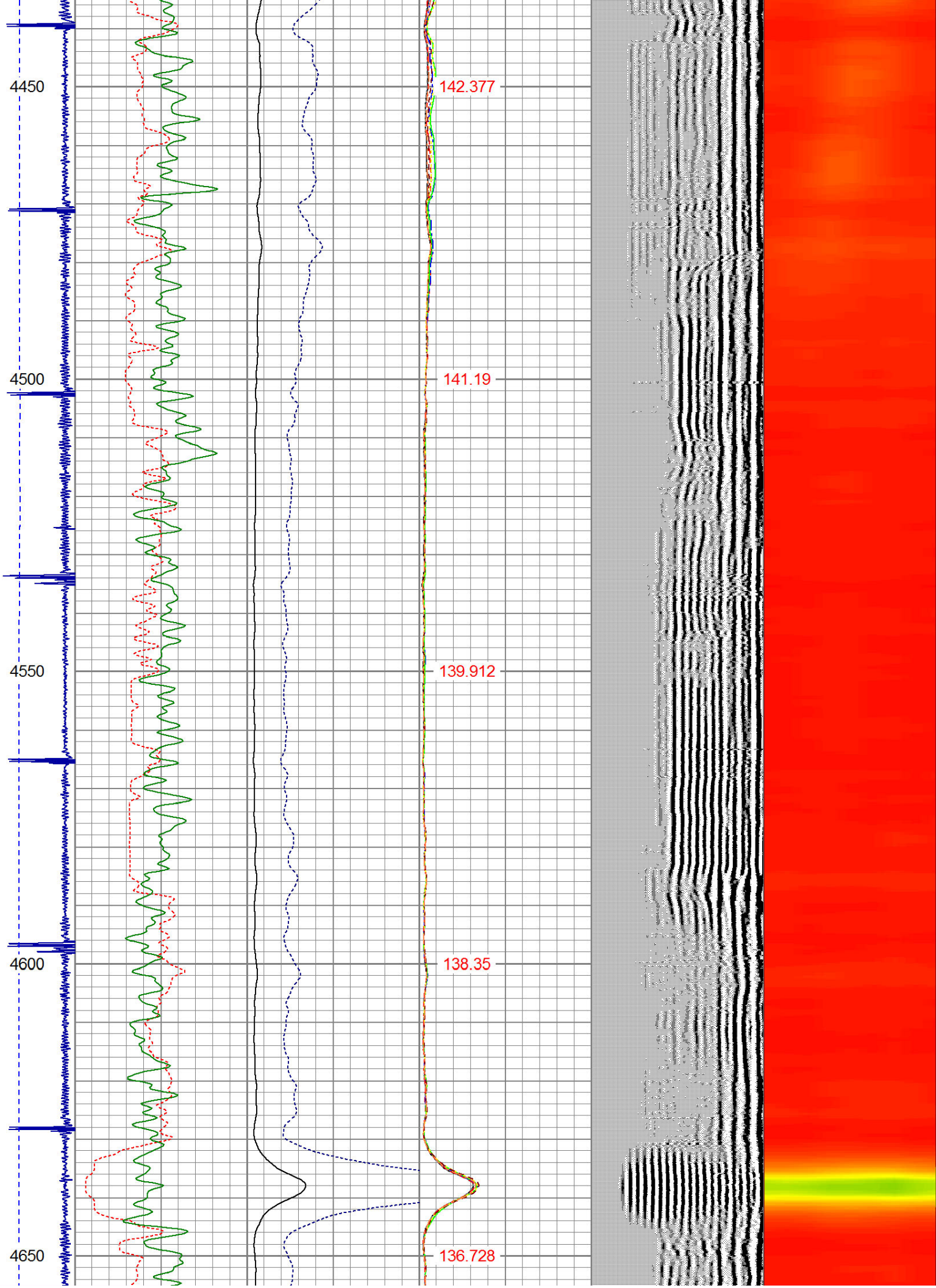
139.912

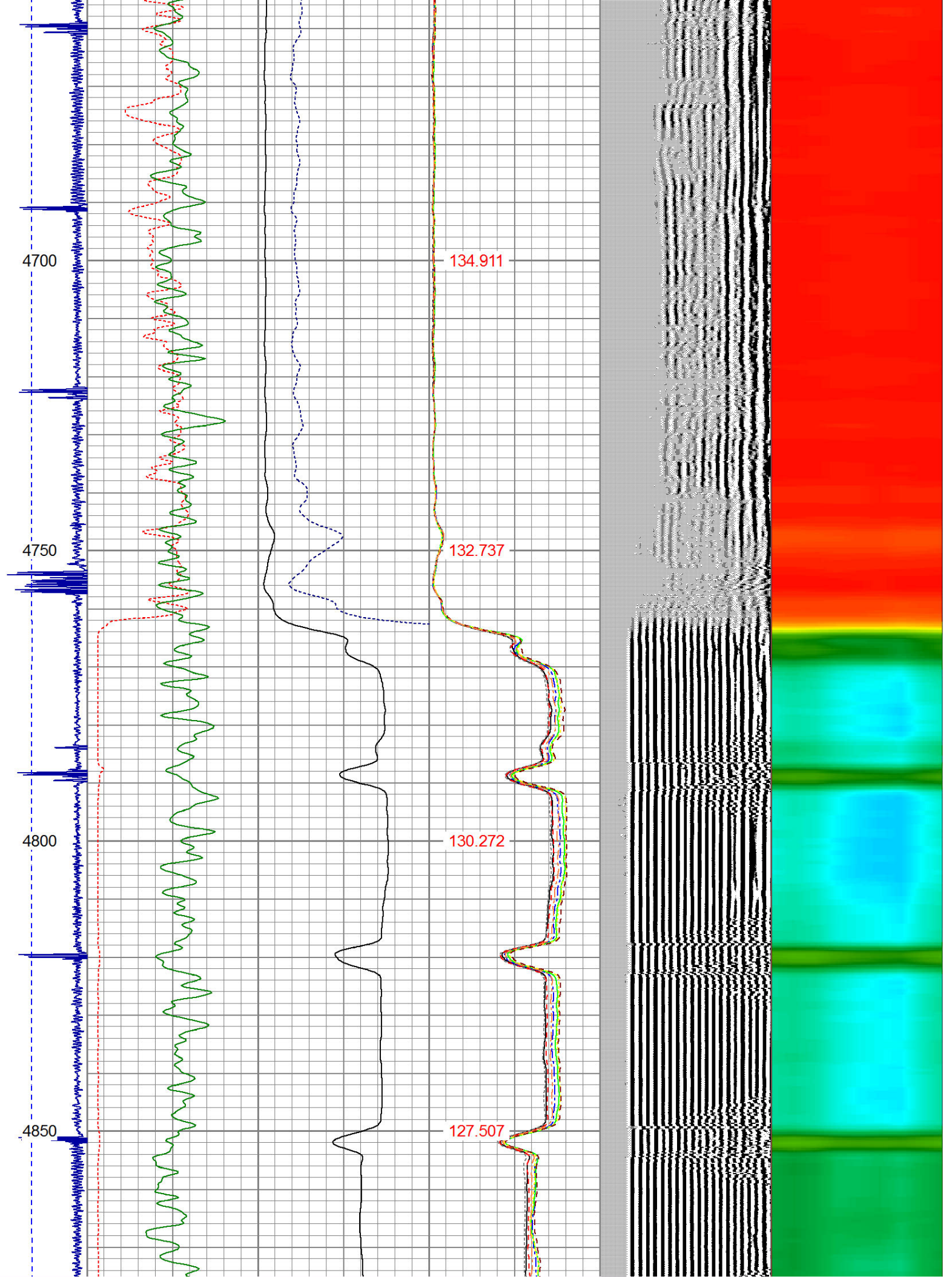
4600

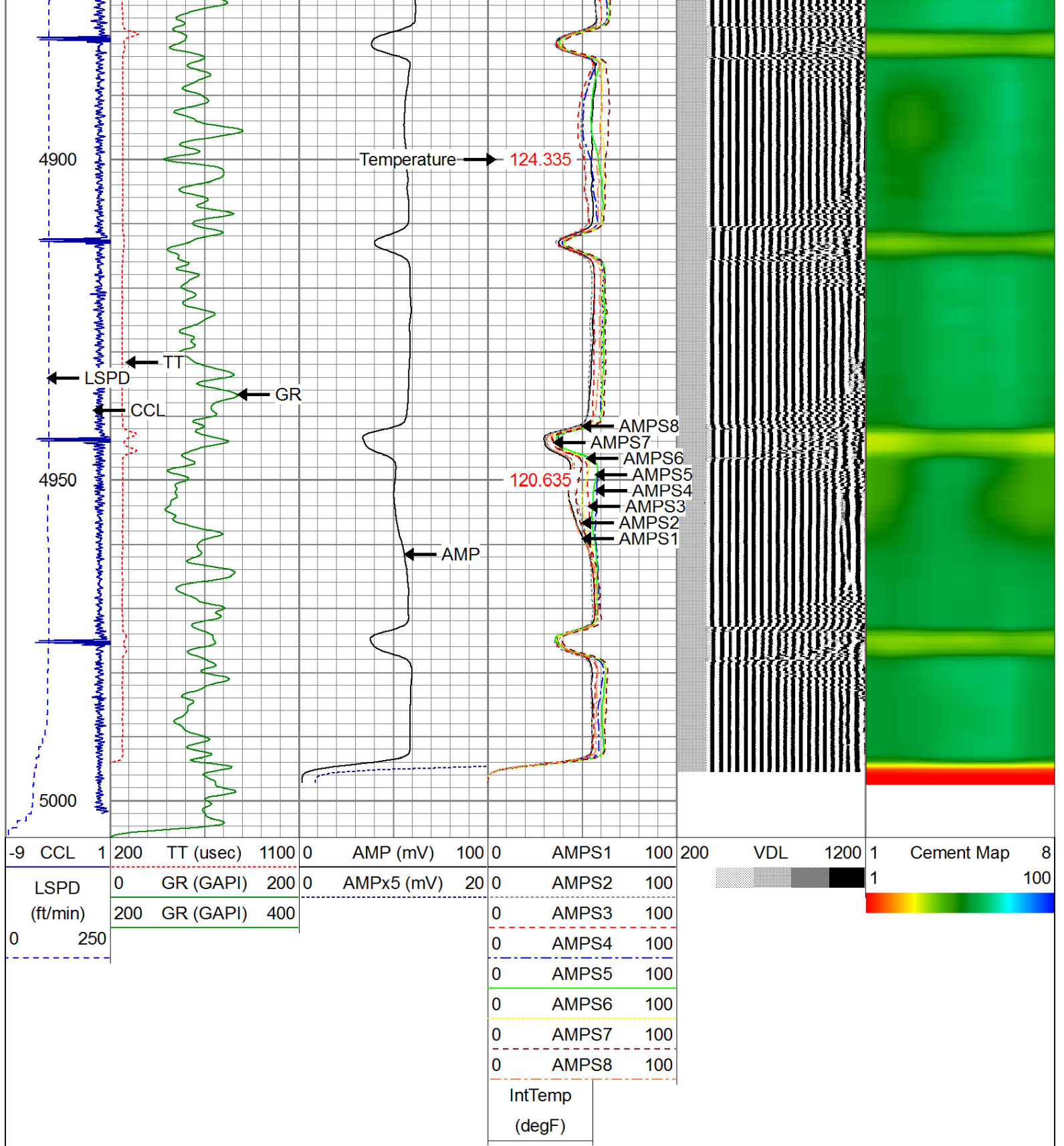
138.35

4650

136.728







Well Services
E-LINE

Company NOBLE ENERGY

Well HAMBERT R G 32-6

Field WATTENBURG

County WELD

State CO