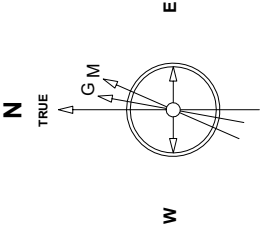


Great Western Operating Company, LLC

Created by	mmount
Date plotted	25-Nov-2020
Plot reference is	Tower LD 19-222HNX (AWB).
Ref wellpath is	Tower LD 19-222HNX (AWPH1).
Coordinates are in	Feet reference S13 - Tower LD 19-222HNX.
True Vertical Depths are	reference Rig Datum.
Measured Depths are	reference Rig Datum.
Rig Datum:	Actual Datum #1
Rig Datum to Mean Sea Level:	5244.00 ft.
Plot North is aligned to	TRUE North.

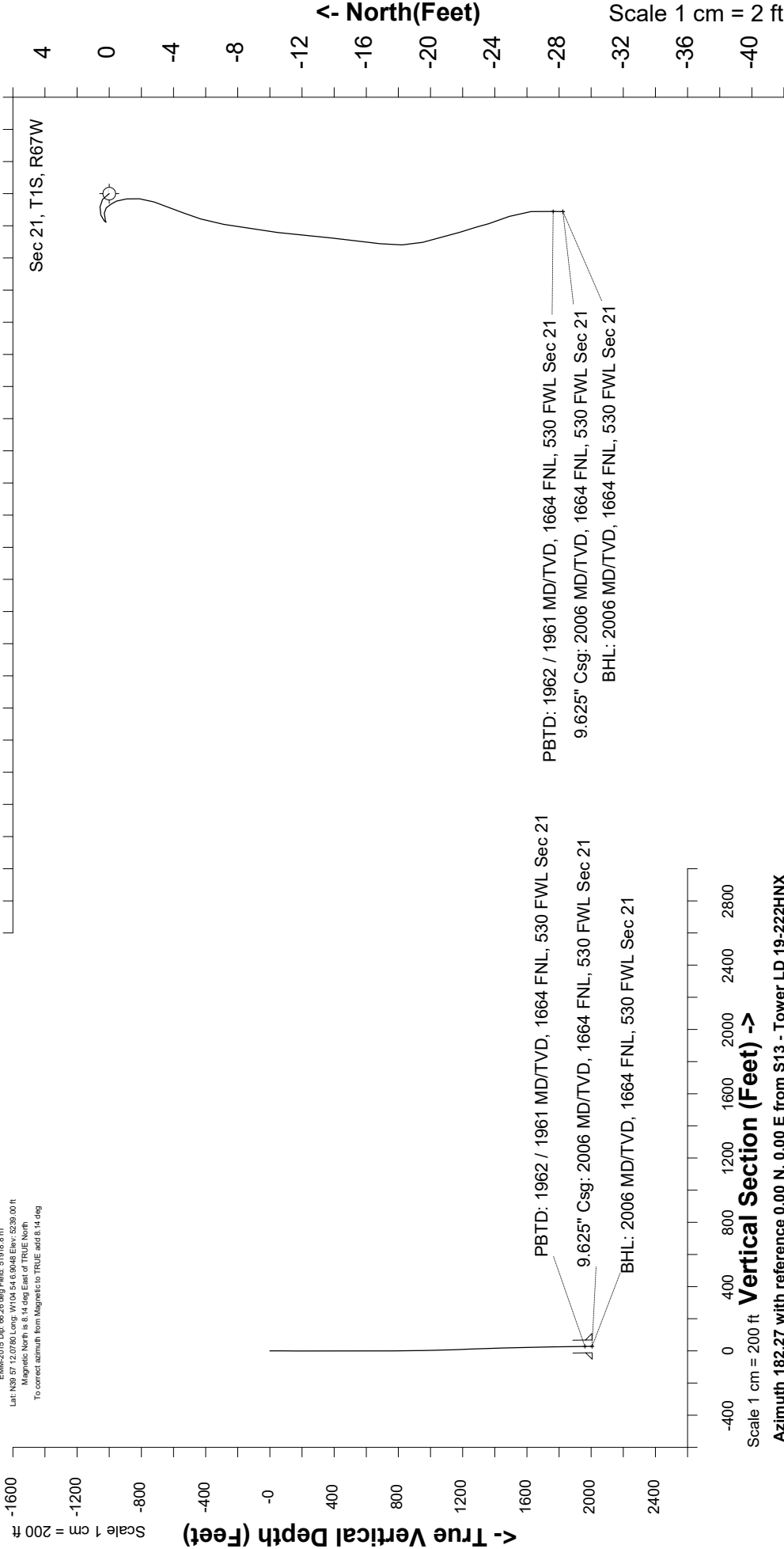
Location	Colorado	Slot	S13 - Tower LD 19-222HNX
Field	Wattenburg	Well	Tower LD 19-222HNX
Installation	Tower	Wellbore	Tower LD 19-222HNX (AWB)



Feb-13-2019
EIMM2015 Dip: 68.26 deg Field: 51918.8 nT
Lat: N39 57 12.0760 Long: W104 54 6.9048 Elev: 5239.00 ft
Magnetic North is 8.14 deg East of TRUE North.
To correct azimuth from Magnetic to TRUE add 8.14 deg

Scale 1 cm = 2 ft

East (Feet) ->



Vertical Section (Feet) ->

Scale 1 cm = 200 ft

Azimuth 182.27 with reference 0.00 N, 0.00 E from S13 - Tower LD 19-222HNX

Great Western Operating Co, LLC
 Directional Survey Report
 Wellpath: Tower LD 19-222HNX
 MDs and TVDs are from Rig Floor 5244.0ft above Mean Sea Level

Wellpath Report

MD[ft]	Inc[deg]	Azi[deg]	TVD[ft]	North[ft]	East[ft]	DLS [deg/100ft]	Vertical Section[ft]
0.00	0.00	0.00	0.00	0.00	0.00		0.00
82.00	0.22	321.81	82.00	0.12	-0.10	0.27	-0.12
168.00	0.31	315.30	168.00	0.42	-0.36	0.11	-0.40
254.00	0.40	267.84	254.00	0.57	-0.83	0.35	-0.54
343.00	0.26	258.88	343.00	0.52	-1.34	0.17	-0.47
432.00	0.31	222.67	431.99	0.31	-1.70	0.21	-0.24
522.00	0.26	57.34	521.99	0.24	-1.69	0.63	-0.17
612.00	0.40	97.95	611.99	0.30	-1.21	0.29	-0.26
702.00	0.09	172.83	701.99	0.19	-0.89	0.43	-0.16
792.00	0.40	135.22	791.99	-0.10	-0.66	0.37	0.13
882.00	0.97	171.78	881.98	-1.08	-0.33	0.77	1.09
972.00	1.27	197.35	971.97	-2.79	-0.51	0.64	2.80
1062.00	1.23	203.77	1061.95	-4.62	-1.20	0.16	4.67
1152.00	2.11	191.03	1151.91	-7.13	-1.91	1.06	7.20
1241.00	2.24	186.28	1240.84	-10.47	-2.41	0.25	10.56
1331.00	2.11	185.40	1330.78	-13.87	-2.76	0.15	13.96
1421.00	1.76	188.21	1420.73	-16.88	-3.11	0.40	16.99
1511.00	1.63	167.30	1510.69	-19.50	-3.03	0.70	19.61
1601.00	1.45	162.20	1600.66	-21.83	-2.40	0.25	21.91
1691.00	0.92	165.71	1690.64	-23.62	-1.87	0.59	23.67
1781.00	0.83	154.20	1780.63	-24.90	-1.41	0.22	24.94
1871.00	0.97	178.90	1870.62	-26.25	-1.11	0.45	26.28
1951.00	0.79	180.83	1950.61	-27.48	-1.11	0.23	27.50
2006.00	0.79	180.83	2005.60	-28.24	-1.12	==>	28.26