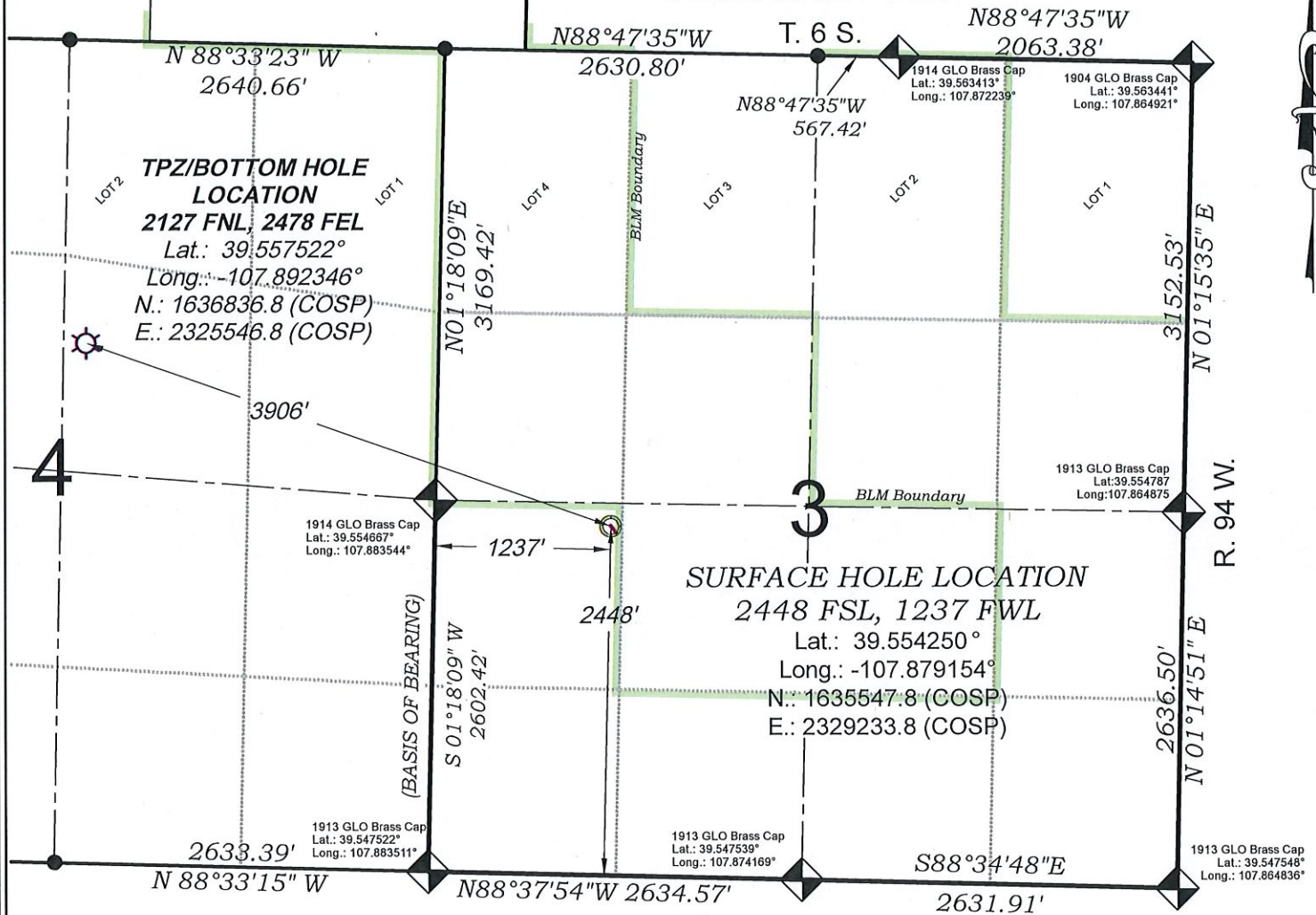


Federal NR 432-4



SEE LOCATION DRAWING PLAT FOR
 VISIBLE IMPROVEMENTS WITHIN
 500' OF THIS LOCATION

EXISTING GROUND ELEV.: 6729.6
 PROPOSED PAD ELEV.: 6729.7

- LEGEND -

FIELD LOCATED SECTION
 MONUMENTS AS DESCRIBED

FIELD SURVEYED
 WELL LOCATION

CALCULATED TOP OF PRODUCTION ZONE
 /BOTTOM HOLE LOCATION

CALCULATED SECTION
 CORNER LOCATION

SURVEYORS STATEMENT

I, MICHAEL J. LANGHORNE, A REGISTERED LAND SURVEYOR IN THE
 STATE OF COLORADO DO HEREBY CERTIFY THAT THE SURVEY SHOWN
 HEREON WAS PREPARED UNDER MY DIRECT SUPERVISION AND HAS
 BEEN STAKED ON THE GROUND AS SHOWN ON THE PLAT AND
 CHECKING THAT THIS MAP IS A TRUE REPRESENTATION THEREOF.

MICHAEL J. LANGHORNE, COLORADO REGISTRATION NO. 36572
 FOR AND ON BEHALF OF
 BOOKCLIFF SURVEY SERVICES, INC.

REFERENCES

- 1) Dependent Resurvey T. 6 S., R. 94 W., 6th P.M (GLO PLAT)
- 2) U.S.G.S. QUAD: RIFLE, CO

REVISED: 9/9/20

136 East Third Street
 Rifle, Colorado
 81650 Ph. (970)
 625-2720 Fax (970)
 625-2773

BOOKCLIFF
 Survey Services, Inc.

SURVEY DATE: 7/22/20
 MAP DATE: 8/31/20
 SCALE: 1" = 1200'
 PLAT: 1 of 7
 PROJECT: TEP Valley

WELL LOCATION PLAT Prepared for:



TEP Rocky Mountain LLC

NW1/4 SW1/4, SECTION 3
 T. 6 S., R. 94 W. of the 6th P.M.
 GARFIELD COUNTY, COLORADO