



00244645

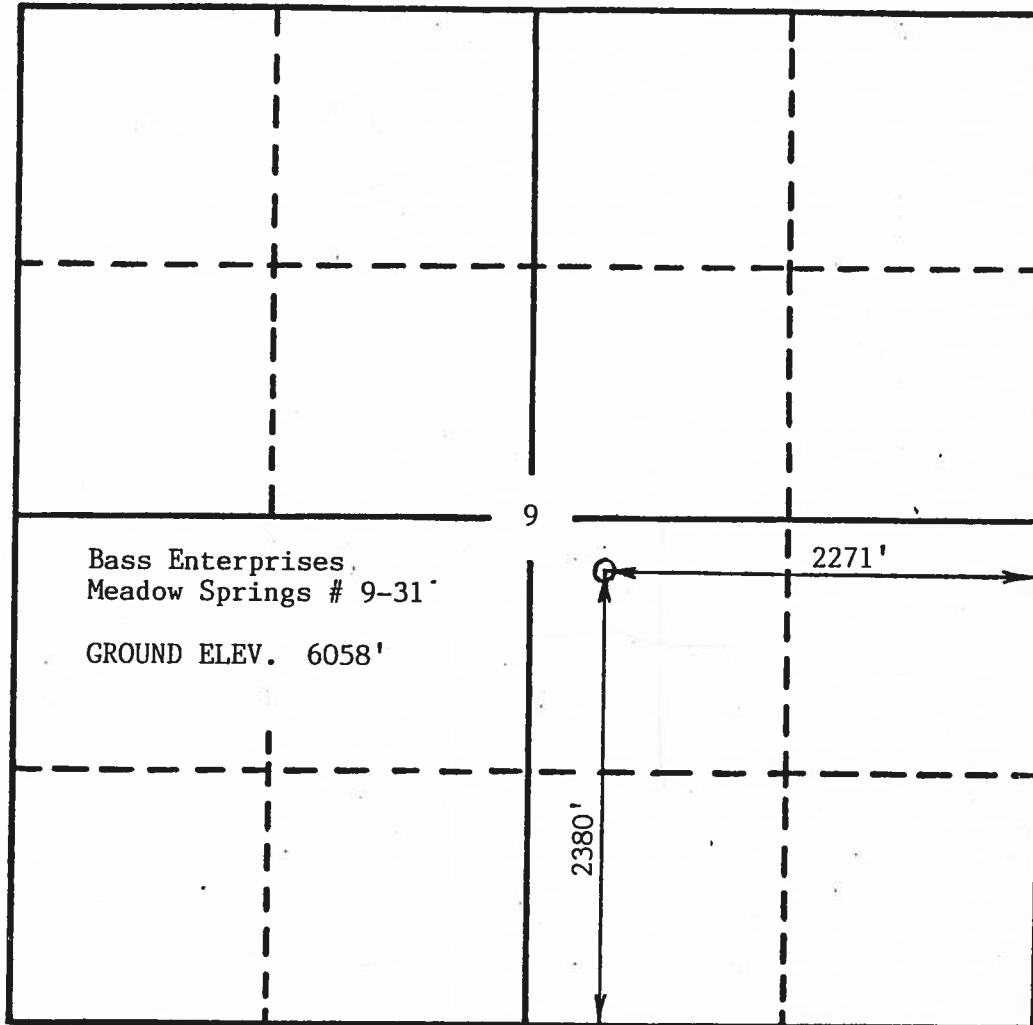
RECEIVED

JAN 14 1985

COLO. OIL & GAS CONS. COMM.

R 68 W

T 11 N



1"=1000'

Flatirons Surveying, Inc., in accordance with a request from Bass Enterprises Production Co., has determined the location of the Meadow Springs # 9-31 to be 2380' FSL and 2271' FEL, in the NW 1/4 of the SE 1/4 of Section 9, T11N, R68W, Sixth Principal Meridian, Larimer County, Colorado.

Surveyor's Certificate

I, John Hall, a R.L.S. in the State of Colorado, do hereby certify that this survey was made under my direct supervision and that this plat represents said survey.

84-2731

Dec. 28, 1984



FLATIRONS SURVEYING
1800 30TH ST., STE. 219
BOULDER, CO 80301
(303) 443-7001