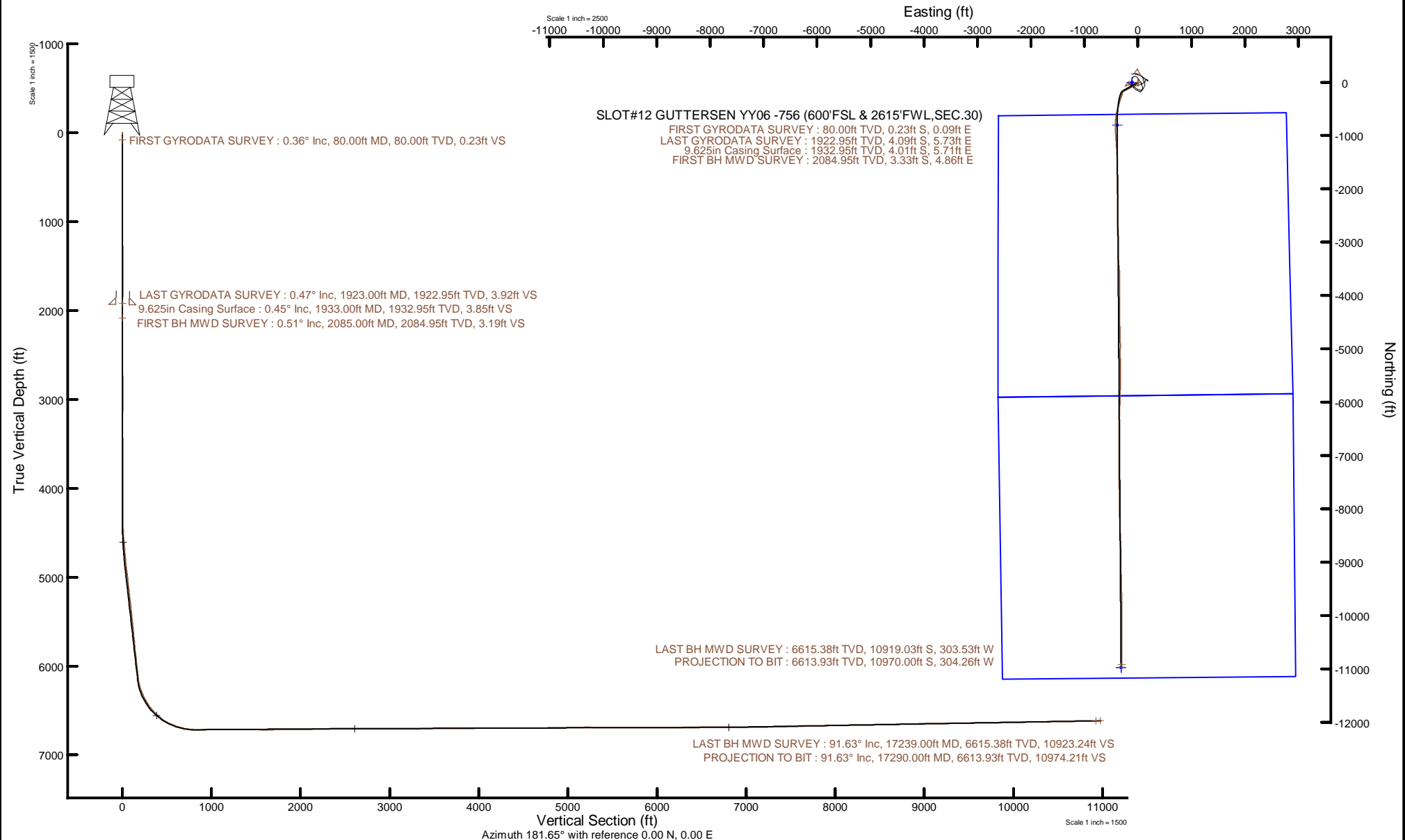


# NOBLE ENERGY, INC

Location: COLORADO Slot: SLOT#12 GUTTERSEN YY06 -756 (600'FSL & 2615'FWL,SEC.30)  
Field: WELD COUNTY (NOBLE NAD 83 GRID) Well: GUTTERSEN YY06 -756  
Facility: SEC.30-T03N-R63W Wellbore: GUTTERSEN YY06 -756 PWB



Plot reference wellpath is GUTTERSEN YY06 -756 PWP Rev-B.0	Grid System: NAD83 / Lambert Colorado SP, Northern Zone (501), US feet
True vertical depths are referenced to RIG (30) (RKB)	North Reference: Grid north
Reference wellpath measured depths are referenced to RIG (30) (RKB)	Scale: True distance
RIG (30) (RKB) to Mean Sea Level: 4820 feet	Coordinates are in feet referenced to Slot
Mean Sea Level to Mud line (At Slot: SLOT#12 GUTTERSEN YY06 -756 (600'FSL & 2615'FWL,SEC.30)): 0 feet	Depths are in feet
Offset wellpath MDs are referenced to each path's default MD datum	Created by: painsetr on 2020-07-17; Database: WellArchitectDB





# Actual Wellpath Report

GUTTERSEN YY06 -756 AWP

Page 1 of 10



## REFERENCE WELLPATH IDENTIFICATION

Operator	NOBLE ENERGY, INC	Well	GUTTERSEN YY06 -756
Field	WELD COUNTY (NOBLE NAD 83 GRID)	API/Legal	
Facility	SEC.30-T03N-R63W	Wellbore	GUTTERSEN YY06 -756 AWB
Slot	SLOT#12 GUTTERSEN YY06 -756 (600'FSL & 2615'FWL,SEC.30)		

## REPORT SETUP INFORMATION

Projection System	NAD83 / Lambert Colorado SP, Northern Zone (501), US feet	Software System	WellArchitect® 6.0
North Reference	Grid	User	Painsetr
Scale	0.999957	Report Generated	7/17/2020 at 6:03:53 AM
Convergence at slot	0.66° East	Database	WellArchitectDB

## WELLPATH LOCATION

	Local coordinates		Grid coordinates		Geographic coordinates	
	North[ft]	East[ft]	Easting[US ft]	Northing[US ft]	Latitude	Longitude
Slot Location	148.73	111.76	3284673.27	1313984.81	40.1907947°	-104.4809939°
Facility Reference Pt			3284561.52	1313836.09	40.1903900°	-104.4814000°
Field Reference Pt			3000000.00	4454105.15	48.7761986°	-105.5000000°

## WELLPATH DATUM

Calculation method	Minimum curvature	RIG (30') (RKB) to Facility Vertical Datum	4820.00ft
Horizontal Reference Pt	Slot	RIG (30') (RKB) to Mean Sea Level	4820.00ft
Vertical Reference Pt	RIG (30') (RKB)	RIG (30') (RKB) to Mud Line at Slot (SLOT#12 GUTTERSEN YY06 -756 (600'FSL & 2615'FWL,SEC.30))	4820.00ft
MD Reference Pt	RIG (30') (RKB)	Section Origin	N 0.00, E 0.00 ft
Field Vertical Reference	Mean Sea Level	Section Azimuth	181.65°

### REFERENCE WELLPATH IDENTIFICATION

Operator	NOBLE ENERGY, INC	Well	GUTTERSEN YY06 -756
Field	WELD COUNTY (NOBLE NAD 83 GRID)	API/Legal	
Facility	SEC.30-T03N-R63W	Wellbore	GUTTERSEN YY06 -756 AWB
Slot	SLOT#12 GUTTERSEN YY06 -756 (600'FSL & 2615'FWL,SEC.30)		

### WELLPATH DATA (182 stations)

MD [ft]	Inclination [°]	Azimuth [°]	TVD [ft]	Vert Sect [ft]	North [ft]	East [ft]	Latitude	Longitude	DLS [°/100ft]	Toolface [°]	Build Rate [°/100ft]	Turn Rate [°/100ft]	Comments
0.00	0.000	158.570	0.00	0.00	0.00	0.00	40.1907947	-104.4809939	0.00	0.00	0.00	0.00	
80.00	0.360	158.570	80.00	0.23	-0.23	0.09	40.1907941	-104.4809936	0.45	-87.20	0.45	0.00	FIRST GYRODATA SURVEY
173.00	0.560	111.320	173.00	0.65	-0.67	0.62	40.1907929	-104.4809917	0.44	168.80	0.22	-50.81	
265.00	0.180	137.290	264.99	0.91	-0.94	1.14	40.1907921	-104.4809899	0.44	-12.30	-0.41	28.23	
360.00	0.560	128.920	359.99	1.30	-1.34	1.60	40.1907910	-104.4809882	0.40	-96.40	0.40	-8.81	
455.00	0.680	87.440	454.99	1.54	-1.61	2.53	40.1907902	-104.4809849	0.48	-160.17	0.13	-43.66	
550.00	0.360	67.420	549.98	1.37	-1.47	3.36	40.1907906	-104.4809819	0.38	75.69	-0.34	-21.07	
645.00	0.490	97.720	644.98	1.29	-1.41	4.04	40.1907907	-104.4809795	0.27	29.20	0.14	31.89	
739.00	0.690	106.650	738.98	1.48	-1.62	4.98	40.1907901	-104.4809761	0.23	-170.01	0.21	9.50	
834.00	0.370	97.760	833.97	1.66	-1.83	5.83	40.1907895	-104.4809731	0.35	94.06	-0.34	-9.36	
929.00	0.450	136.720	928.97	1.96	-2.14	6.39	40.1907886	-104.4809711	0.30	76.32	0.08	41.01	
1023.00	0.500	152.060	1022.97	2.58	-2.77	6.84	40.1907869	-104.4809695	0.14	123.79	0.05	16.32	
1118.00	0.420	177.480	1117.96	3.28	-3.49	7.05	40.1907849	-104.4809688	0.23	-57.29	-0.08	26.76	
1213.00	0.450	171.940	1212.96	4.00	-4.21	7.12	40.1907830	-104.4809686	0.05	-179.61	0.03	-5.83	
1307.00	0.270	171.680	1306.96	4.58	-4.79	7.20	40.1907813	-104.4809683	0.19	174.96	-0.19	-0.28	
1402.00	0.060	189.910	1401.96	4.85	-5.06	7.22	40.1907806	-104.4809683	0.23	97.74	-0.22	19.19	
1497.00	0.070	229.510	1496.96	4.94	-5.15	7.17	40.1907804	-104.4809684	0.05	-85.83	0.01	41.68	
1591.00	0.090	194.550	1590.96	5.05	-5.26	7.11	40.1907801	-104.4809687	0.06	88.96	0.02	-37.19	
1686.00	0.330	267.690	1685.96	5.14	-5.34	6.82	40.1907799	-104.4809697	0.33	98.34	0.25	76.99	
1781.00	0.460	320.810	1780.96	4.87	-5.05	6.30	40.1907807	-104.4809715	0.39	102.45	0.14	55.92	
1876.00	0.450	329.810	1875.95	4.27	-4.44	5.87	40.1907824	-104.4809731	0.08	88.80	-0.01	9.47	
1923.00	0.470	345.430	1922.95	3.92	-4.09	5.73	40.1907833	-104.4809735	0.27	-119.28	0.04	33.23	LAST GYRODATA SURVEY
2085.00	0.510	279.650	2084.95	3.19	-3.33	4.86	40.1907854	-104.4809767	0.33	-178.03	0.02	-40.60	FIRST BH MWD SURVEY
2180.00	0.160	275.330	2179.94	3.12	-3.24	4.31	40.1907857	-104.4809786	0.37	-167.48	-0.37	-4.55	
2369.00	0.070	258.140	2368.94	3.13	-3.24	3.93	40.1907857	-104.4809800	0.05	-120.67	-0.05	-9.10	
2464.00	0.260	150.860	2463.94	3.33	-3.44	3.98	40.1907851	-104.4809798	0.30	-111.60	0.20	-112.93	
2559.00	0.260	107.670	2558.94	3.57	-3.70	4.29	40.1907844	-104.4809787	0.20	41.92	0.00	-45.46	
2653.00	0.550	131.180	2652.94	3.92	-4.06	4.83	40.1907834	-104.4809768	0.35	177.80	0.31	25.01	
2748.00	0.490	131.450	2747.94	4.47	-4.63	5.48	40.1907819	-104.4809745	0.06	-148.16	-0.06	0.28	
2842.00	0.310	106.790	2841.93	4.79	-4.97	6.02	40.1907809	-104.4809725	0.26	-41.65	-0.19	-26.23	

### REFERENCE WELLPATH IDENTIFICATION

Operator	NOBLE ENERGY, INC	Well	GUTTERSEN YY06 -756
Field	WELD COUNTY (NOBLE NAD 83 GRID)	API/Legal	
Facility	SEC.30-T03N-R63W	Wellbore	GUTTERSEN YY06 -756 AWB
Slot	SLOT#12 GUTTERSEN YY06 -756 (600'FSL & 2615'FWL,SEC.30)		

### WELLPATH DATA (182 stations)

MD [ft]	Inclination [°]	Azimuth [°]	TVD [ft]	Vert Sect [ft]	North [ft]	East [ft]	Latitude	Longitude	DLS [°/100ft]	Toolface [°]	Build Rate [°/100ft]	Turn Rate [°/100ft]	Comments
2937.00	0.470	91.140	2936.93	4.86	-5.05	6.66	40.1907807	-104.4809703	0.20	-154.55	0.17	-16.47	
3032.00	0.240	59.280	3031.93	4.75	-4.96	7.22	40.1907809	-104.4809683	0.31	-4.76	-0.24	-33.54	
3127.00	0.480	56.900	3126.93	4.41	-4.64	7.73	40.1907818	-104.4809664	0.25	-136.69	0.25	-2.51	
3221.00	0.370	343.060	3220.93	3.90	-4.13	7.97	40.1907831	-104.4809656	0.55	165.94	-0.12	-78.55	
3316.00	0.210	123.650	3315.93	3.70	-3.93	8.02	40.1907837	-104.4809653	0.58	61.50	-0.17	147.99	
3411.00	0.480	162.540	3410.92	4.17	-4.41	8.29	40.1907824	-104.4809644	0.36	62.72	0.28	40.94	
3506.00	0.590	178.950	3505.92	5.03	-5.28	8.41	40.1907800	-104.4809640	0.20	-170.70	0.12	17.27	
3600.00	0.100	115.730	3599.92	5.55	-5.80	8.50	40.1907785	-104.4809637	0.59	94.76	-0.52	-67.26	
3695.00	0.110	145.540	3694.92	5.66	-5.91	8.62	40.1907782	-104.4809633	0.06	167.25	0.01	31.38	
3789.00	0.090	148.440	3788.92	5.79	-6.05	8.71	40.1907779	-104.4809630	0.02	-94.64	-0.02	3.09	
3884.00	0.150	90.530	3883.92	5.85	-6.11	8.88	40.1907777	-104.4809624	0.13	154.40	0.06	-60.96	
3979.00	0.090	198.870	3978.92	5.92	-6.18	8.98	40.1907775	-104.4809620	0.21	123.48	-0.06	114.04	
4074.00	0.090	265.820	4073.92	6.00	-6.26	8.88	40.1907773	-104.4809624	0.10	180.00	0.00	70.47	
4169.00	0.000	7.290	4168.92	6.01	-6.26	8.80	40.1907773	-104.4809626	0.09	0.00	-0.09	0.00	
4263.00	0.090	101.740	4262.92	6.02	-6.28	8.88	40.1907772	-104.4809624	0.10	139.12	0.10	0.00	
4358.00	1.430	238.500	4357.91	6.68	-6.91	7.94	40.1907755	-104.4809658	1.58	-1.67	1.41	143.96	
4452.00	4.180	237.400	4451.79	9.25	-9.37	4.05	40.1907689	-104.4809798	2.93	2.21	2.93	-1.17	
4547.00	6.730	238.240	4546.35	14.27	-14.17	-3.60	40.1907559	-104.4810074	2.69	-8.15	2.68	0.88	
4642.00	8.220	236.750	4640.54	21.22	-20.82	-14.01	40.1907380	-104.4810449	1.58	5.58	1.57	-1.57	
4737.00	8.850	237.150	4734.49	29.24	-28.51	-25.83	40.1907173	-104.4810875	0.67	10.02	0.66	0.42	
4831.00	10.160	238.460	4827.19	37.88	-36.77	-38.97	40.1906950	-104.4811349	1.41	-9.78	1.39	1.39	
4926.00	12.350	236.700	4920.36	48.28	-46.73	-54.61	40.1906682	-104.4811913	2.33	170.60	2.31	-1.85	
5020.00	11.830	237.120	5012.28	59.50	-57.48	-71.10	40.1906392	-104.4812507	0.56	175.85	-0.55	0.45	
5115.00	10.410	237.690	5105.49	69.82	-67.36	-86.53	40.1906126	-104.4813064	1.50	6.76	-1.49	0.60	
5210.00	11.850	238.520	5198.70	79.94	-77.04	-102.11	40.1905865	-104.4813625	1.53	79.21	1.52	0.87	
5304.00	11.880	239.260	5290.69	90.40	-87.02	-118.65	40.1905596	-104.4814222	0.16	118.42	0.03	0.79	
5399.00	11.660	241.340	5383.70	100.48	-96.63	-135.48	40.1905338	-104.4814828	0.50	62.62	-0.23	2.19	
5494.00	11.740	242.090	5476.72	110.09	-105.76	-152.45	40.1905093	-104.4815439	0.18	63.48	0.08	0.79	
5588.00	11.780	242.480	5568.75	119.49	-114.67	-169.41	40.1904853	-104.4816049	0.09	167.81	0.04	0.41	
5683.00	11.640	242.630	5661.77	128.86	-123.55	-186.52	40.1904615	-104.4816665	0.15	-173.11	-0.15	0.16	

REFERENCE WELLPATH IDENTIFICATION			
Operator	NOBLE ENERGY, INC	Well	GUTTERSEN YY06 -756
Field	WELD COUNTY (NOBLE NAD 83 GRID)	API/Legal	
Facility	SEC.30-T03N-R63W	Wellbore	GUTTERSEN YY06 -756 AWB
Slot	SLOT#12 GUTTERSEN YY06 -756 (600'FSL & 2615'FWL,SEC.30)		

WELLPATH DATA (182 stations)													
MD [ft]	Inclination [°]	Azimuth [°]	TVD [ft]	Vert Sect [ft]	North [ft]	East [ft]	Latitude	Longitude	DLS [°/100ft]	Toolface [°]	Build Rate [°/100ft]	Turn Rate [°/100ft]	Comments
5778.00	10.890	242.150	5754.94	137.93	-132.15	-202.96	40.1904384	-104.4817258	0.80	-7.79	-0.79	-0.51	
5873.00	11.950	241.450	5848.06	147.30	-141.04	-219.54	40.1904145	-104.4817854	1.13	-20.50	1.12	-0.74	
5974.00	12.130	241.130	5946.84	157.94	-151.16	-238.02	40.1903873	-104.4818520	0.19	-162.52	0.18	-0.32	
6069.00	11.650	240.380	6039.80	167.99	-160.72	-255.09	40.1903616	-104.4819135	0.53	-90.06	-0.51	-0.79	
6163.00	11.650	240.260	6131.86	177.86	-170.12	-271.59	40.1903363	-104.4819729	0.03	-81.15	0.00	-0.13	
6258.00	16.130	204.050	6224.23	195.09	-186.97	-285.32	40.1902905	-104.4820228	10.06	-26.55	4.72	-38.12	
6352.00	24.940	194.020	6312.19	226.60	-218.19	-295.47	40.1902051	-104.4820604	10.06	24.89	9.37	-10.67	
6447.00	31.280	199.570	6395.96	269.68	-260.92	-308.60	40.1900883	-104.4821091	7.21	-1.78	6.67	5.84	
6542.00	37.570	199.250	6474.28	320.80	-311.55	-326.43	40.1899499	-104.4821750	6.62	-14.42	6.62	-0.34	
6637.00	48.360	195.580	6543.71	383.06	-373.28	-345.57	40.1897810	-104.4822461	11.66	-0.13	11.36	-3.86	
6731.00	55.400	195.560	6601.70	454.79	-444.47	-365.41	40.1895863	-104.4823200	7.49	-9.07	7.49	-0.02	
6826.00	64.990	193.880	6648.87	535.00	-524.12	-386.27	40.1893683	-104.4823979	10.21	-29.87	10.09	-1.77	
6921.00	72.620	189.340	6683.20	622.16	-610.80	-403.99	40.1891309	-104.4824649	9.18	-25.47	8.03	-4.78	
7015.00	80.160	185.720	6705.31	712.96	-701.30	-415.90	40.1888829	-104.4825113	8.85	-19.26	8.02	-3.85	
7110.00	88.030	182.980	6715.08	807.27	-795.44	-423.05	40.1886247	-104.4825407	8.77	-61.59	8.28	-2.88	
7205.00	92.190	175.300	6714.90	902.09	-890.34	-421.62	40.1883642	-104.4825395	9.19	143.67	4.38	-8.08	
7300.00	89.510	177.270	6713.49	996.65	-985.11	-415.47	40.1881039	-104.4825214	3.50	-61.58	-2.82	2.07	
7394.00	90.890	174.720	6713.16	1090.18	-1078.87	-408.91	40.1878463	-104.4825017	3.08	119.16	1.47	-2.71	
7489.00	89.450	177.300	6712.88	1184.71	-1173.63	-402.30	40.1875860	-104.4824820	3.11	-162.35	-1.52	2.72	
7584.00	89.230	177.230	6713.97	1279.43	-1268.52	-397.76	40.1873254	-104.4824696	0.24	-52.27	-0.23	-0.07	
7678.00	91.110	174.800	6713.70	1372.96	-1362.28	-391.23	40.1870678	-104.4824501	3.27	123.99	2.00	-2.59	
7773.00	88.770	178.270	6713.80	1467.56	-1457.09	-385.49	40.1868074	-104.4824335	4.41	57.56	-2.46	3.65	
7868.00	89.660	179.670	6715.10	1562.45	-1552.06	-383.78	40.1865467	-104.4824312	1.75	51.68	0.94	1.47	
7963.00	90.150	180.290	6715.25	1657.41	-1647.06	-383.75	40.1862859	-104.4824350	0.83	-6.12	0.52	0.65	
8057.00	90.430	180.260	6714.78	1751.38	-1741.05	-384.20	40.1860280	-104.4824405	0.30	90.00	0.30	-0.03	
8152.00	90.430	180.290	6714.07	1846.35	-1836.05	-384.66	40.1857672	-104.4824460	0.03	-74.74	0.00	0.03	
8247.00	90.490	180.070	6713.30	1941.31	-1931.05	-384.96	40.1855065	-104.4824510	0.24	-39.70	0.06	-0.23	
8342.00	91.080	179.580	6712.00	2036.26	-2026.04	-384.67	40.1852457	-104.4824539	0.81	-87.33	0.62	-0.52	
8436.00	91.230	176.330	6710.11	2130.03	-2119.95	-381.31	40.1849879	-104.4824457	3.46	112.49	0.16	-3.46	
8531.00	89.510	180.480	6709.49	2224.85	-2214.88	-378.67	40.1847272	-104.4824402	4.73	-49.62	-1.81	4.37	

### REFERENCE WELLPATH IDENTIFICATION

Operator	NOBLE ENERGY, INC	Well	GUTTERSEN YY06 -756
Field	WELD COUNTY (NOBLE NAD 83 GRID)	API/Legal	
Facility	SEC.30-T03N-R63W	Wellbore	GUTTERSEN YY06 -756 AWP
Slot	SLOT#12 GUTTERSEN YY06 -756 (600'FSL & 2615'FWL,SEC.30)		

### WELLPATH DATA (182 stations)

MD [ft]	Inclination [°]	Azimuth [°]	TVD [ft]	Vert Sect [ft]	North [ft]	East [ft]	Latitude	Longitude	DLS [°/100ft]	Toolface [°]	Build Rate [°/100ft]	Turn Rate [°/100ft]	Comments
8626.00	90.250	179.610	6709.69	2319.81	-2309.88	-378.75	40.1844665	-104.4824443	1.20	105.07	0.78	-0.92	
8721.00	90.180	179.870	6709.33	2414.76	-2404.88	-378.31	40.1842057	-104.4824467	0.28	-143.30	-0.07	0.27	
8816.00	89.630	179.460	6709.49	2509.70	-2499.88	-377.76	40.1839449	-104.4824486	0.72	-8.13	-0.58	-0.43	
8910.00	90.680	179.310	6709.24	2603.63	-2593.87	-376.75	40.1836869	-104.4824489	1.13	-150.55	1.12	-0.16	
9005.00	90.060	178.960	6708.62	2698.53	-2688.86	-375.32	40.1834261	-104.4824476	0.75	-135.00	-0.65	-0.37	
9100.00	89.880	178.780	6708.67	2793.42	-2783.84	-373.44	40.1831654	-104.4824448	0.27	15.59	-0.19	-0.19	
9194.00	90.310	178.900	6708.52	2887.31	-2877.82	-371.54	40.1829073	-104.4824419	0.47	135.34	0.46	0.13	
9289.00	89.450	179.750	6708.72	2982.23	-2972.81	-370.42	40.1826466	-104.4824418	1.27	-24.78	-0.91	0.89	
9384.00	89.970	179.510	6709.20	3077.17	-3067.81	-369.81	40.1823858	-104.4824435	0.60	83.29	0.55	-0.25	
9478.00	90.090	180.530	6709.15	3171.13	-3161.80	-369.84	40.1821278	-104.4824475	1.09	-40.75	0.13	1.09	
9573.00	92.120	178.780	6707.32	3266.04	-3256.78	-369.27	40.1818671	-104.4824493	2.82	-101.84	2.14	-1.84	
9667.00	91.510	175.880	6704.34	3359.72	-3350.62	-364.89	40.1816094	-104.4824375	3.15	-116.16	-0.65	-3.09	
9762.00	90.340	173.500	6702.81	3454.00	-3445.19	-356.10	40.1813495	-104.4824099	2.79	95.89	-1.23	-2.51	
9856.00	89.910	177.660	6702.60	3547.45	-3538.89	-348.86	40.1810921	-104.4823879	4.45	92.86	-0.46	4.43	
9951.00	89.780	180.270	6702.86	3642.34	-3633.86	-347.14	40.1808314	-104.4823856	2.75	-65.00	-0.14	2.75	
10046.00	90.680	178.340	6702.48	3737.25	-3728.85	-345.99	40.1805706	-104.4823854	2.24	-175.60	0.95	-2.03	
10140.00	89.510	178.250	6702.32	3831.09	-3822.81	-343.19	40.1803126	-104.4823792	1.25	35.21	-1.24	-0.10	
10235.00	92.060	180.050	6701.02	3925.98	-3917.78	-341.78	40.1800519	-104.4823781	3.29	126.56	2.68	1.89	
10329.00	90.650	181.950	6698.80	4019.94	-4011.73	-343.42	40.1797941	-104.4823878	2.52	-76.51	-1.50	2.02	
10519.00	91.110	180.030	6695.88	4209.90	-4201.67	-346.71	40.1792728	-104.4824074	1.04	-115.48	0.24	-1.01	
10614.00	89.660	176.990	6695.24	4304.74	-4296.62	-344.24	40.1790121	-104.4824024	3.55	92.34	-1.53	-3.20	
10708.00	89.540	179.940	6695.90	4398.58	-4390.57	-341.72	40.1787542	-104.4823973	3.14	55.95	-0.13	3.14	
10803.00	90.520	181.390	6695.85	4493.56	-4485.56	-342.82	40.1784935	-104.4824051	1.84	-92.53	1.03	1.53	
10898.00	90.250	175.330	6695.21	4588.36	-4580.48	-340.10	40.1782329	-104.4823993	6.39	106.80	-0.28	-6.38	
10992.00	89.320	178.410	6695.56	4682.02	-4674.33	-334.97	40.1779751	-104.4823848	3.42	47.76	-0.99	3.28	
11087.00	91.390	180.690	6694.97	4776.95	-4769.31	-334.23	40.1777144	-104.4823860	3.24	-120.04	2.18	2.40	
11182.00	90.030	178.340	6693.79	4871.86	-4864.29	-333.42	40.1774536	-104.4823870	2.86	96.76	-1.43	-2.47	
11276.00	89.780	180.450	6693.95	4965.79	-4958.28	-332.43	40.1771956	-104.4823874	2.26	22.39	-0.27	2.24	
11371.00	91.600	181.200	6692.81	5060.76	-5053.26	-333.80	40.1769350	-104.4823961	2.07	-97.74	1.92	0.79	
11466.00	91.200	178.270	6690.48	5155.67	-5148.22	-333.36	40.1766743	-104.4823985	3.11	-170.43	-0.42	-3.08	

### REFERENCE WELLPATH IDENTIFICATION

Operator	NOBLE ENERGY, INC	Well	GUTTERSEN YY06 -756
Field	WELD COUNTY (NOBLE NAD 83 GRID)	API/Legal	
Facility	SEC.30-T03N-R63W	Wellbore	GUTTERSEN YY06 -756 AWP
Slot	SLOT#12 GUTTERSEN YY06 -756 (600'FSL & 2615'FWL,SEC.30)		

### WELLPATH DATA (182 stations)

MD [ft]	Inclination [°]	Azimuth [°]	TVD [ft]	Vert Sect [ft]	North [ft]	East [ft]	Latitude	Longitude	DLS [°/100ft]	Toolface [°]	Build Rate [°/100ft]	Turn Rate [°/100ft]	Comments
11560.00	89.420	177.970	6689.97	5249.49	-5242.16	-330.27	40.1764163	-104.4823913	1.92	90.99	-1.89	-0.32	
11655.00	89.380	180.320	6690.97	5344.39	-5337.14	-328.86	40.1761556	-104.4823901	2.47	-94.87	-0.04	2.47	
11749.00	89.260	178.910	6692.09	5438.32	-5431.13	-328.23	40.1758976	-104.4823917	1.51	77.88	-0.13	-1.50	
11844.00	89.750	181.190	6692.91	5533.27	-5526.12	-328.31	40.1756369	-104.4823959	2.45	160.64	0.52	2.40	
11939.00	89.380	181.320	6693.63	5628.27	-5621.09	-330.39	40.1753762	-104.4824073	0.41	-26.24	-0.39	0.14	
12033.00	90.800	180.620	6693.48	5722.26	-5715.08	-331.98	40.1751183	-104.4824168	1.68	158.39	1.51	-0.74	
12128.00	88.680	181.460	6693.91	5817.24	-5810.05	-333.70	40.1748577	-104.4824269	2.40	36.38	-2.23	0.88	
12222.00	91.450	183.500	6693.80	5911.22	-5903.95	-337.77	40.1746001	-104.4824453	3.66	-102.35	2.95	2.17	
12317.00	90.620	179.720	6692.09	6006.19	-5998.88	-340.44	40.1743396	-104.4824587	4.07	98.68	-0.87	-3.98	
12412.00	90.030	183.580	6691.55	6101.17	-6093.82	-343.17	40.1740791	-104.4824724	4.11	-76.32	-0.62	4.06	
12507.00	90.580	181.320	6691.04	6196.15	-6188.73	-347.23	40.1738187	-104.4824909	2.45	81.51	0.58	-2.38	
12601.00	90.680	181.990	6690.01	6290.14	-6282.68	-349.95	40.1735609	-104.4825044	0.72	138.26	0.11	0.71	
12696.00	89.660	182.900	6689.73	6385.13	-6377.59	-354.00	40.1733005	-104.4825228	1.44	-75.24	-1.07	0.96	
12791.00	90.340	180.320	6689.73	6480.12	-6472.54	-356.67	40.1730400	-104.4825363	2.81	173.88	0.72	-2.72	
12885.00	90.060	180.350	6689.40	6574.10	-6566.54	-357.22	40.1727820	-104.4825421	0.30	-96.34	-0.30	0.03	
12980.00	89.910	179.000	6689.42	6669.04	-6661.54	-356.68	40.1725212	-104.4825441	1.43	-23.57	-0.16	-1.42	
13075.00	90.460	178.760	6689.12	6763.93	-6756.52	-354.82	40.1722605	-104.4825413	0.63	98.74	0.58	-0.25	
13170.00	90.180	180.580	6688.59	6858.86	-6851.51	-354.28	40.1719997	-104.4825433	1.94	-119.40	-0.29	1.92	
13264.00	89.780	179.870	6688.62	6952.83	-6945.51	-354.65	40.1717417	-104.4825485	0.87	10.01	-0.43	-0.76	
13359.00	91.480	180.170	6687.58	7047.79	-7040.50	-354.68	40.1714810	-104.4825525	1.82	-123.61	1.79	0.32	
13453.00	90.090	178.080	6686.29	7141.68	-7134.47	-353.24	40.1712230	-104.4825512	2.67	59.28	-1.48	-2.22	
13548.00	91.260	180.050	6685.17	7236.57	-7229.45	-351.69	40.1709623	-104.4825495	2.41	-135.72	1.23	2.07	
13642.00	90.460	179.270	6683.76	7330.50	-7323.43	-351.14	40.1707043	-104.4825514	1.19	20.20	-0.85	-0.83	
13737.00	92.280	179.940	6681.49	7425.41	-7418.40	-350.48	40.1704436	-104.4825530	2.04	134.24	1.92	0.71	
13832.00	91.540	180.700	6678.32	7520.33	-7513.35	-351.01	40.1701830	-104.4825588	1.12	-92.64	-0.78	0.80	
13926.00	91.420	178.130	6675.89	7614.22	-7607.30	-350.05	40.1699251	-104.4825592	2.74	123.47	-0.13	-2.73	
14021.00	90.580	179.400	6674.23	7709.08	-7702.26	-348.01	40.1696644	-104.4825558	1.60	-41.41	-0.88	1.34	
14115.00	91.600	178.500	6672.45	7802.96	-7796.23	-346.28	40.1694064	-104.4825535	1.45	103.14	1.09	-0.96	
14210.00	91.020	180.980	6670.27	7897.87	-7891.19	-345.85	40.1691457	-104.4825558	2.68	-87.60	-0.61	2.61	
14304.00	91.140	178.090	6668.50	7991.78	-7985.16	-345.09	40.1688877	-104.4825569	3.08	74.11	0.13	-3.07	

REFERENCE WELLPATH IDENTIFICATION			
Operator	NOBLE ENERGY, INC	Well	GUTTERSEN YY06 -756
Field	WELD COUNTY (NOBLE NAD 83 GRID)	API/Legal	
Facility	SEC.30-T03N-R63W	Wellbore	GUTTERSEN YY06 -756 AWB
Slot	SLOT#12 GUTTERSEN YY06 -756 (600'FSL & 2615'FWL,SEC.30)		

WELLPATH DATA (182 stations)													
MD [ft]	Inclination [°]	Azimuth [°]	TVD [ft]	Vert Sect [ft]	North [ft]	East [ft]	Latitude	Longitude	DLS [°/100ft]	Toolface [°]	Build Rate [°/100ft]	Turn Rate [°/100ft]	Comments
14399.00	91.450	179.180	6666.35	8086.63	-8080.11	-342.83	40.1686271	-104.4825527	1.19	-109.69	0.33	1.15	
14493.00	91.110	178.230	6664.25	8180.48	-8174.06	-340.70	40.1683691	-104.4825490	1.07	-147.93	-0.36	-1.01	
14587.00	90.280	177.710	6663.11	8274.28	-8267.99	-337.37	40.1681112	-104.4825409	1.04	44.16	-0.88	-0.55	
14682.00	91.690	179.080	6661.48	8369.10	-8362.94	-334.71	40.1678505	-104.4825353	2.07	-129.42	1.48	1.44	
14777.00	90.950	178.180	6659.29	8463.95	-8457.88	-332.44	40.1675898	-104.4825311	1.23	-56.65	-0.78	-0.95	
14871.00	91.200	177.800	6657.53	8557.74	-8551.81	-329.15	40.1673319	-104.4825232	0.48	84.79	0.27	-0.40	
14966.00	91.320	179.120	6655.44	8652.57	-8646.75	-326.59	40.1670712	-104.4825179	1.39	-110.61	0.13	1.39	
15061.00	90.650	177.340	6653.81	8747.38	-8741.69	-323.66	40.1668105	-104.4825113	2.00	40.80	-0.71	-1.87	
15156.00	91.750	178.290	6651.82	8842.14	-8836.59	-320.04	40.1665499	-104.4825023	1.53	138.27	1.16	1.00	
15250.00	90.550	179.360	6649.93	8936.01	-8930.55	-318.11	40.1662920	-104.4824992	1.71	64.74	-1.28	1.14	
15345.00	90.800	179.890	6648.81	9030.94	-9025.54	-317.49	40.1660312	-104.4825009	0.62	-59.03	0.26	0.56	
15439.00	90.920	179.690	6647.40	9124.88	-9119.53	-317.15	40.1657732	-104.4825035	0.25	-42.76	0.13	-0.21	
15534.00	91.320	179.320	6645.54	9219.80	-9214.51	-316.32	40.1655125	-104.4825045	0.57	77.00	0.42	-0.39	
15629.00	91.350	179.450	6643.33	9314.70	-9309.48	-315.31	40.1652518	-104.4825047	0.14	-140.27	0.03	0.14	
15724.00	90.580	178.810	6641.73	9409.59	-9404.45	-313.86	40.1649911	-104.4825035	1.05	-67.53	-0.81	-0.67	
15819.00	91.200	177.310	6640.25	9504.39	-9499.38	-310.65	40.1647304	-104.4824959	1.71	76.42	0.65	-1.58	
15913.00	91.540	178.720	6638.01	9598.17	-9593.30	-307.39	40.1644725	-104.4824881	1.54	156.88	0.36	1.50	
16008.00	90.650	179.100	6636.19	9693.04	-9688.26	-305.59	40.1642118	-104.4824855	1.02	110.25	-0.94	0.40	
16103.00	90.030	180.780	6635.63	9788.00	-9783.26	-305.49	40.1639510	-104.4824891	1.88	-57.52	-0.65	1.77	
16198.00	91.080	179.130	6634.71	9882.95	-9878.25	-305.41	40.1636903	-104.4824927	2.06	53.12	1.11	-1.74	
16292.00	91.290	179.410	6632.76	9976.84	-9972.22	-304.21	40.1634323	-104.4824923	0.37	86.84	0.22	0.30	
16387.00	91.350	180.500	6630.57	10071.78	-10067.19	-304.14	40.1631716	-104.4824959	1.15	-168.47	0.06	1.15	
16482.00	90.860	180.400	6628.74	10166.74	-10162.17	-304.89	40.1629110	-104.4825025	0.53	-20.17	-0.52	-0.11	
16576.00	91.350	180.220	6626.93	10260.69	-10256.15	-305.39	40.1626530	-104.4825082	0.56	-132.04	0.52	-0.19	
16671.00	90.800	179.610	6625.15	10355.63	-10351.14	-305.25	40.1623923	-104.4825115	0.86	-8.97	-0.58	-0.64	
16765.00	91.940	179.430	6622.90	10449.54	-10445.10	-304.47	40.1621344	-104.4825126	1.23	160.32	1.21	-0.19	
16860.00	90.150	180.070	6621.17	10544.47	-10540.08	-304.05	40.1618736	-104.4825150	2.00	-48.87	-1.88	0.67	
16955.00	90.770	179.360	6620.40	10639.41	-10635.08	-303.58	40.1616129	-104.4825172	0.99	77.76	0.65	-0.75	
17049.00	90.950	180.190	6618.99	10733.35	-10729.07	-303.21	40.1613549	-104.4825198	0.90	-96.84	0.19	0.88	
17144.00	90.890	179.690	6617.47	10828.29	-10824.05	-303.11	40.1610942	-104.4825233	0.53	56.76	-0.06	-0.53	



REFERENCE WELLPATH IDENTIFICATION			
Operator	NOBLE ENERGY, INC	Well	GUTTERSEN YY06 -756
Field	WELD COUNTY (NOBLE NAD 83 GRID)	API/Legal	
Facility	SEC.30-T03N-R63W	Wellbore	GUTTERSEN YY06 -756 AWB
Slot	SLOT#12 GUTTERSEN YY06 -756 (600'FSL & 2615'FWL,SEC.30)		

WELLPATH DATA (182 stations) † = interpolated, ‡ = extrapolated station													
MD [ft]	Inclination [°]	Azimuth [°]	TVD [ft]	Vert Sect [ft]	North [ft]	East [ft]	Latitude	Longitude	DLS [°/100ft]	Toolface [°]	Build Rate [°/100ft]	Turn Rate [°/100ft]	Comments
17239.00	91.630	180.820	6615.38	10923.24	-10919.03	-303.53	40.1608335	-104.4825287	1.42	0.00	0.78	1.19	LAST BH MWD SURVEY
17290.00‡	91.630	180.820	6613.93	10974.21	-10970.00	-304.26	40.1606936	-104.4825334	0.00		0.00	0.00	PROJECTION TO BIT

HOLE & CASING SECTIONS - Ref Wellbore: GUTTERSEN YY06 -756 AWB      Ref Wellpath: GUTTERSEN YY06 -756 AWP										
String/Diameter	Start MD [ft]	End MD [ft]	Interval [ft]	Start TVD [ft]	End TVD [ft]	Start N/S [ft]	Start E/W [ft]	End N/S [ft]	End E/W [ft]	
9.625in Casing Surface	30.00	1933.00	1903.00	30.00	1932.95	-0.03	0.01	-4.01	5.71	

REFERENCE WELLPATH IDENTIFICATION			
Operator	NOBLE ENERGY, INC	Well	GUTTERSEN YY06 -756
Field	WELD COUNTY (NOBLE NAD 83 GRID)	API/Legal	
Facility	SEC.30-T03N-R63W	Wellbore	GUTTERSEN YY06 -756 AWB
Slot	SLOT#12 GUTTERSEN YY06 -756 (600'FSL & 2615'FWL,SEC.30)		

TARGETS								
Name	TVD [ft]	North [ft]	East [ft]	Grid East [US ft]	Grid North [US ft]	Latitude	Longitude	Shape
SEC.06-T02N-R63W	-1.00	0.08	-113.01	3284560.26	1313984.89	40.1907985	-104.4813984	polygon
	2D Polygon: dimensions not calculated							
SEC.31-T03N-R63W	-1.00	0.08	-113.01	3284560.26	1313984.89	40.1907985	-104.4813984	polygon
	2D Polygon: dimensions not calculated							
GUTTERSEN YY06 -756 BHL Rev-2 (200'FSL & 2220'FWL,SEC.06)	6615.00	-10972.65	-315.52	3284357.76	1303012.66	40.1606867	-104.4825738	point
GUTTERSEN YY06 -756 BHL Rev-1 (200'FSL & 2220'FWL,SEC.06)	6631.00	-10972.65	-315.52	3284357.76	1303012.66	40.1606867	-104.4825738	point
GUTTERSEN YY06 -756 TPZ Rev-1 (200'FNL & 2220'FWL,SEC.31)	6716.00	-803.67	-389.45	3284283.84	1313181.18	40.1886011	-104.4824208	point

WELLPATH COMPOSITION - Ref Wellbore: GUTTERSEN YY06 -756 AWB Ref Wellpath: GUTTERSEN YY06 -756 AWP					
Start MD [ft]	End MD [ft]	Positional Uncertainty Model	Log Name/Comment	Wellbore	Survey Date
0.00	1923.00	Gyrodata 2015 - GC+DROP+COND	Gyrodata 2015 - GC+DROP+COND 13-1/2" <80 - 1923>	GUTTERSEN YY06 -756 AWB	7/16/2020
1923.00	17290.00	OWSG MWD rev2 (MS+IFR1) NOBLE	OWSG MWD Rev2 (MS+IFR1) NOBLE 8-1/2" <2085 - 17239>	GUTTERSEN YY06 -756 AWB	7/16/2020



# Actual Wellpath Report

GUTTERSEN YY06 -756 AWP

Page 10 of 10



## REFERENCE WELLPATH IDENTIFICATION

Operator	NOBLE ENERGY, INC	Well	GUTTERSEN YY06 -756
Field	WELD COUNTY (NOBLE NAD 83 GRID)	API/Legal	
Facility	SEC.30-T03N-R63W	Wellbore	GUTTERSEN YY06 -756 AWB
Slot	SLOT#12 GUTTERSEN YY06 -756 (600'FSL & 2615'FWL,SEC.30)		

## WELLPATH COMMENTS

MD [ft]	Inclination [°]	Azimuth [°]	TVD [ft]	Comment
80.00	0.360	158.570	80.00	FIRST GYRODATA SURVEY
1923.00	0.470	345.430	1922.95	LAST GYRODATA SURVEY
2085.00	0.510	279.650	2084.95	FIRST BH MWD SURVEY
17239.00	91.630	180.820	6615.38	LAST BH MWD SURVEY
17290.00	91.630	180.820	6613.93	PROJECTION TO BIT