



Gamma Ray

LWD MEMORY LOG

Scale:

1:240

True Vertical Depth

Depth Reference:

Driller's Depth

Status:

Final Print

API No: 05-123-48641-00

Job ID: 110462621

Permanent Datum (P.D.): Mean Sea Level

Log Measured From: Rig Floor

Dates

From: 2020-07-15
To: 2020-07-17
Spud: 2020-07-12

Drilled (ft) 1943.00
Top: 1943.00
Bottom: 17289.50

Logged (ft) 1943.00
Top: 1943.00
Bottom: 17277.00

Azi Reference North: 66.57
Total Magnetic Field Strength: (nT) 52003
Mag to Reference North Correction: (deg) 7.26

Interval

Magnetic Field Reference

Borehole Record

Casing Record

Hole Size (in)	From (ft)	To (ft)	Size (in)	Weight (lb/ft)	From (ft)	To (ft)
----------------	-----------	---------	-----------	----------------	-----------	---------

13.500	30.00	1943.00	9.625	36.00	30.00	1933.00
8.500	1943.00	17290.00				

Mud Record

Deviation Record

Type	From (ft)	To (ft)	Hole Size (in)	Interval (ft)	Inc Az (Start)	Inc Az (End)
Oil Based Mud	1943.00	17290.00	8.500	15347.00	0.47 345.43	91.63 180.82

Acquisition System

Software Version

Other

Cadence	RT 5.7	Rig: H&P 517
Plot Studio	5.7.8906.1	Contractor: Helmerich & Payne Drilling Co
		District: RMA Unit: D&E

(C) 2020 Baker Hughes Company - All rights reserved. Baker Hughes and its affiliates provides this information on an "as is" basis for general information purposes and believes it to be accurate as of the date of publication. Baker Hughes does not make any representation as to the accuracy or completeness of the information and makes no warranties of any kind, specific, implied or oral, to the fullest extent permissible by law, including those of merchantability and fitness for a particular purpose or use. Baker Hughes hereby disclaims any and all liability for any direct, indirect, consequential or special damages, claims for lost profits, or third party claims arising from the use of the information, whether a claim is asserted in contract, tort, or otherwise. The Baker Hughes logo is a trademark of Baker Hughes Company.

Log Run Summary

Run No	Bit Run No.	Bit Size (in)	Bit Type	Bit Gauge Length (in)	Assembly Type	Logged Interval		Bit Depth Interval		Date / Time		Circ. Hours (h)
						Top	Bottom	From	To	Start Logging	End Logging	
						(ft)	(ft)	(ft)	(ft)			
1	1	8.500	PDC	3.00	AutoTrak Curve	1930.05	2187.05	1943.00	2200.00	2020-07-13 00:09	2020-07-13 01:05	3.01
2	2	8.500	PDC	3.00	AutoTrak Curve	2187.05	5972.08	2200.00	5985.03	2020-07-13 06:47	2020-07-13 17:31	9.44
3	3	8.500	PDC	3.00	AutoTrak Curve	5971.05	17276.55	5984.00	17289.50	2020-07-13 17:42	2020-07-15 21:00	37.65

Crew

Name	Arrive Wellsite	Depart Wellsite	Name	Arrive Wellsite	Depart Wellsite	Name	Arrive Wellsite	Depart Wellsite
Tien Bui	2020-07-12	2020-07-16						

Mud Properties Record

Date / Time	Run No.	Depth (ft)	Mud Type	Density (ppg)	Viscosity (cP)	pH	Fluid Loss (cm3)	Oil / Water	Source	Total Chlorides (ppm)	K+ (%)
2020-07-12 14:24	1	1943.00	Oil Based Mud	9.2	14	N/A	20.0	68/20	Active Pit	26500	0.00
2020-07-13 05:30	2	2200.00	Oil Based Mud	9.2	14	N/A	20.0	68/20	Active Pit	27000	0.00
2020-07-13 22:13	3	5985.00	Oil Based Mud	9.3	11	N/A	18.2	69.2/21.2	Active Pit	30000	0.00

Equipment and Service Data

Run No.	Tool	Serial Number	Measurement	Sensor Offset (ft)	Bit Offset (ft)	Max O.D. (in)	Min I.D. (in)
1	AutoTrak Curve Steering Unit	15092344	Near Bit VSS	5.93	6.78	7.000	4.330
1	AutoTrak Curve Steering Unit	15092344	Near Bit Inclination	5.93	6.78	7.000	4.330
1	AutoTrak Curve MWD	1421820	Gamma (single)	2.74	12.95	7.000	3.250
1	AutoTrak Curve MWD	1421820	Directional (mag)	12.27	22.48	7.000	3.250
2	AutoTrak Curve Steering Unit	14514942	Near Bit Inclination	5.93	6.78	7.000	4.330
2	AutoTrak Curve Steering Unit	14514942	Near Bit VSS	5.93	6.78	7.000	4.330
2	AutoTrak Curve MWD	12398178	Gamma (single)	2.74	12.95	7.000	3.250
2	AutoTrak Curve MWD	12398178	Directional (mag)	12.27	22.48	7.000	3.250
3	AutoTrak Curve Steering Unit	15068338	Near Bit VSS	5.93	6.78	7.000	4.330
3	AutoTrak Curve Steering Unit	15068338	Near Bit Inclination	5.93	6.78	7.000	4.330
3	AutoTrak Curve MWD	14334277	Gamma (single)	2.74	12.95	7.000	3.250
3	AutoTrak Curve MWD	14334277	Directional (mag)	12.27	22.48	7.000	3.250

Service and Tool Mnemonics

Mnemonic	Name	Description
ATC SU	AutoTrak Curve SU	Auto Trak Curve Steering Unit
ATC MWD	AutoTrak Curve MWD	Auto Trak Curve MWD
ATC LCPM	AutoTrak Curve LCPM	Auto Trak Curve LCPM

Comments

1	Depth measurements were obtained from a depth control system not supplied or operated by Baker Hughes. Due to lack of control by Baker Hughes logging engineers, depth calibrations and measurements could not be independently verified.
2	Baker Hughes runs 1 through 3 utilized 6.75 inch ATC services (Directional and Gamma Ray) behind an 8.5 inch PDC bit and rotary steerable assembly from 1943 to 17290 feet MD (1942 to 6613 feet TVD).
3	Baker Hughes LWD Run 1 to Run 3 utilized 6 ¾ inch NaviGamma service (Gamma Ray and Directional) behind an 8 1/2 inch bit and rotary steerable assembly from 1943 to 17290 feet MD (1943 to 6614 feet TVD).

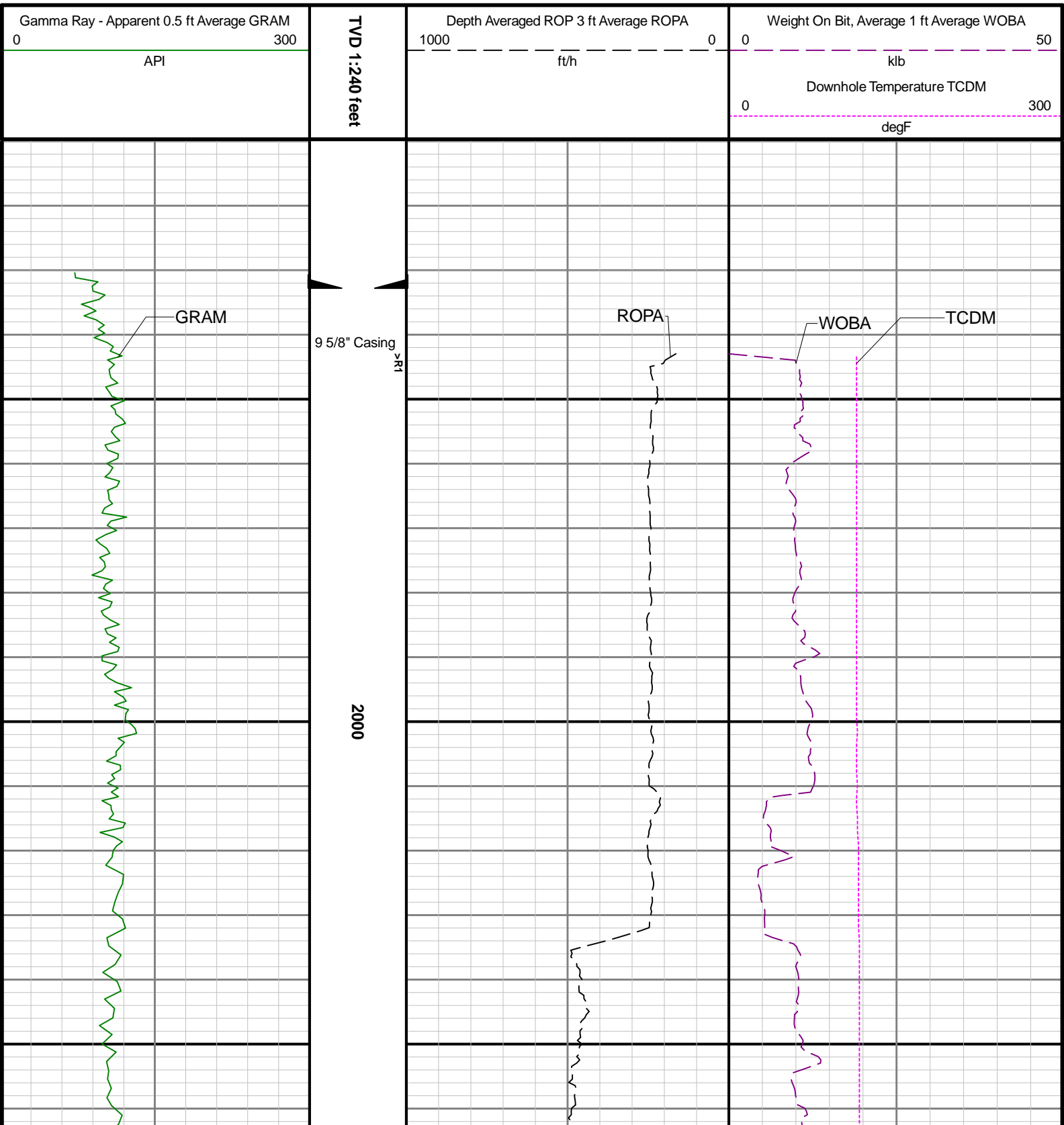
Remarks

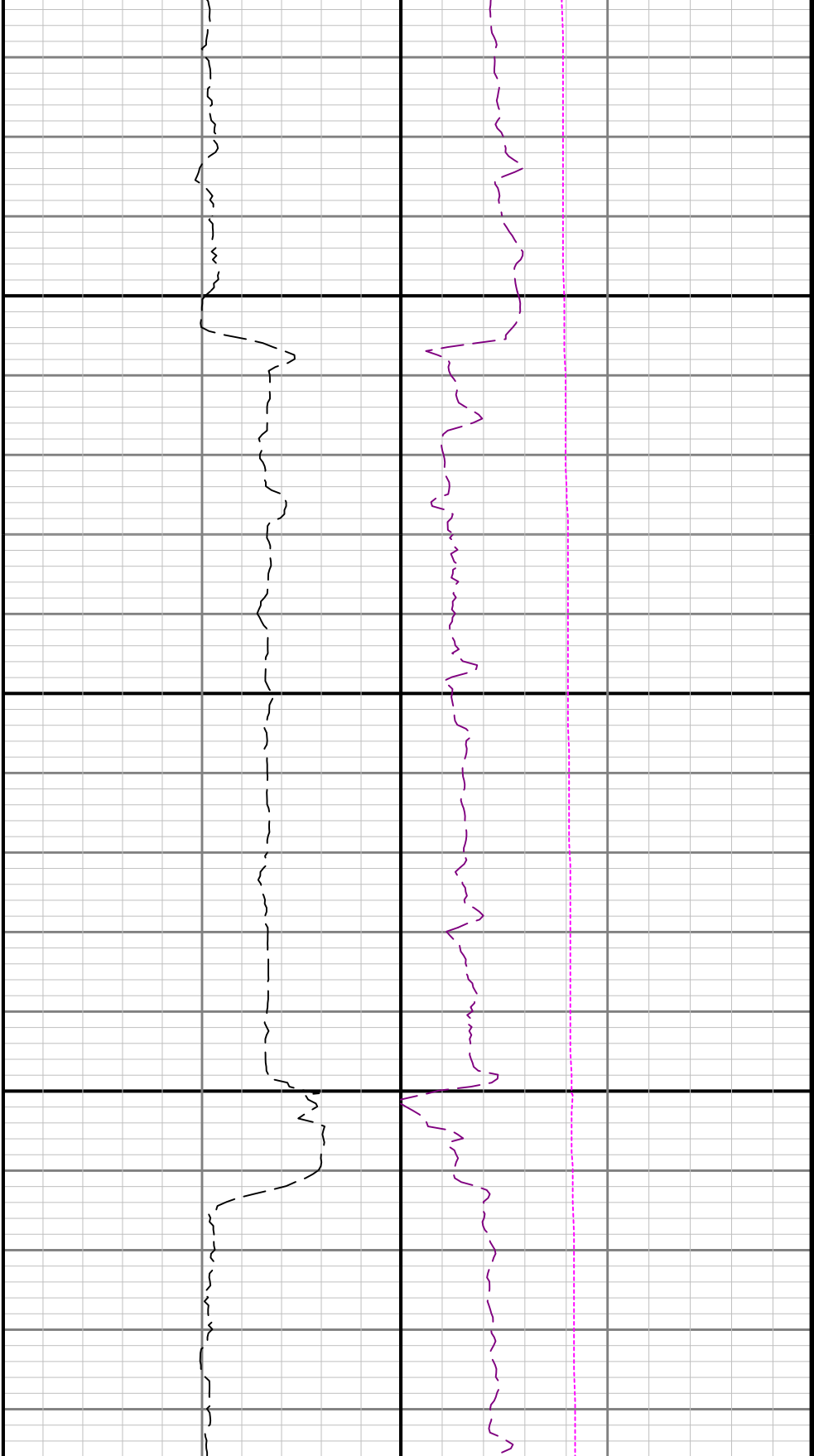
Number	Depth (ft)	Hole Section (in)	Run No.	Remark
1	2185.00	8.500	2	The interval from 2185 to 2199 feet MD (2198 to 2198 feet TVD) was logged up to 6.07 hours later due to a trip out of hole to change BHA.
2	5838.00	8.500	2	The interval from 5838 to 5897 feet MD (5814 to 5872 feet TVD) has gaps in Gamma Ray data due to losing connection with the third party Pason depth tracking system.
3	5972.00	8.500	3	The interval from 5972 to 5984 feet MD (5956 to 5956 feet TVD) was logged up to 6.52 hours later due to a trip out of hole to change BHA.

Curve Mnemonics

Presented Curves	Description	Units
ROPA	Depth Averaged ROP 3 ft Average	ft/h
WORA	Weight On Bit 1 ft Average	klb

GRAM	Gamma Ray - Apparent - Memory 0.5 ft Average	API
TCDM	Directional Real-Time Survey Temperature	degF



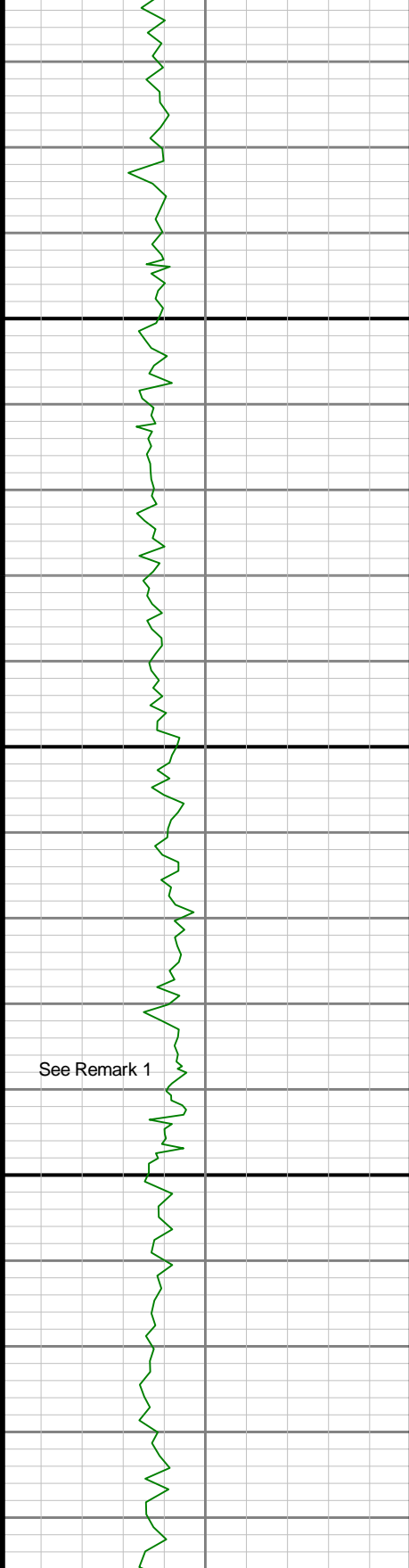


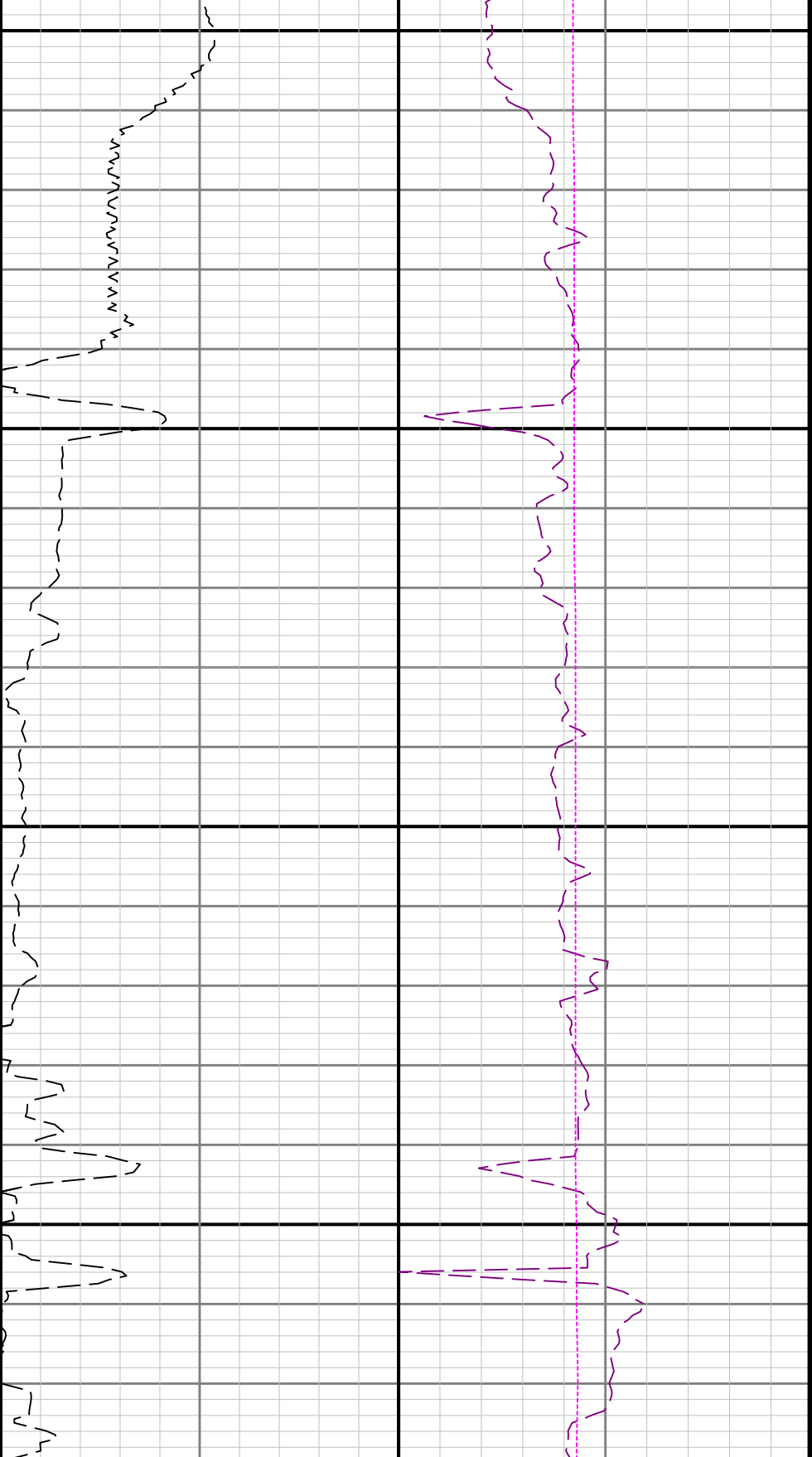
R1○R2

2100

2200

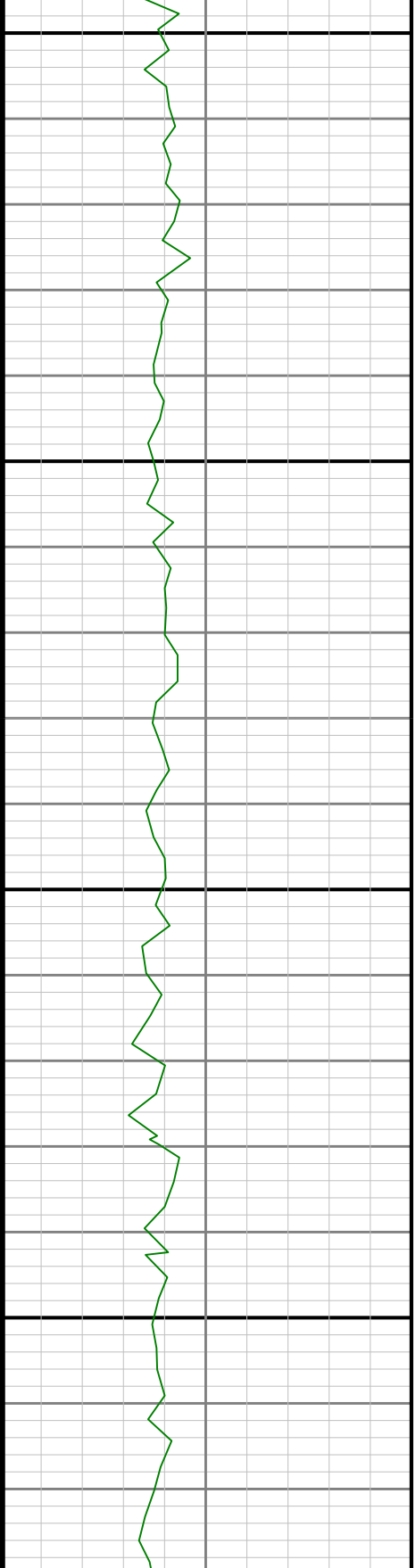
See Remark 1

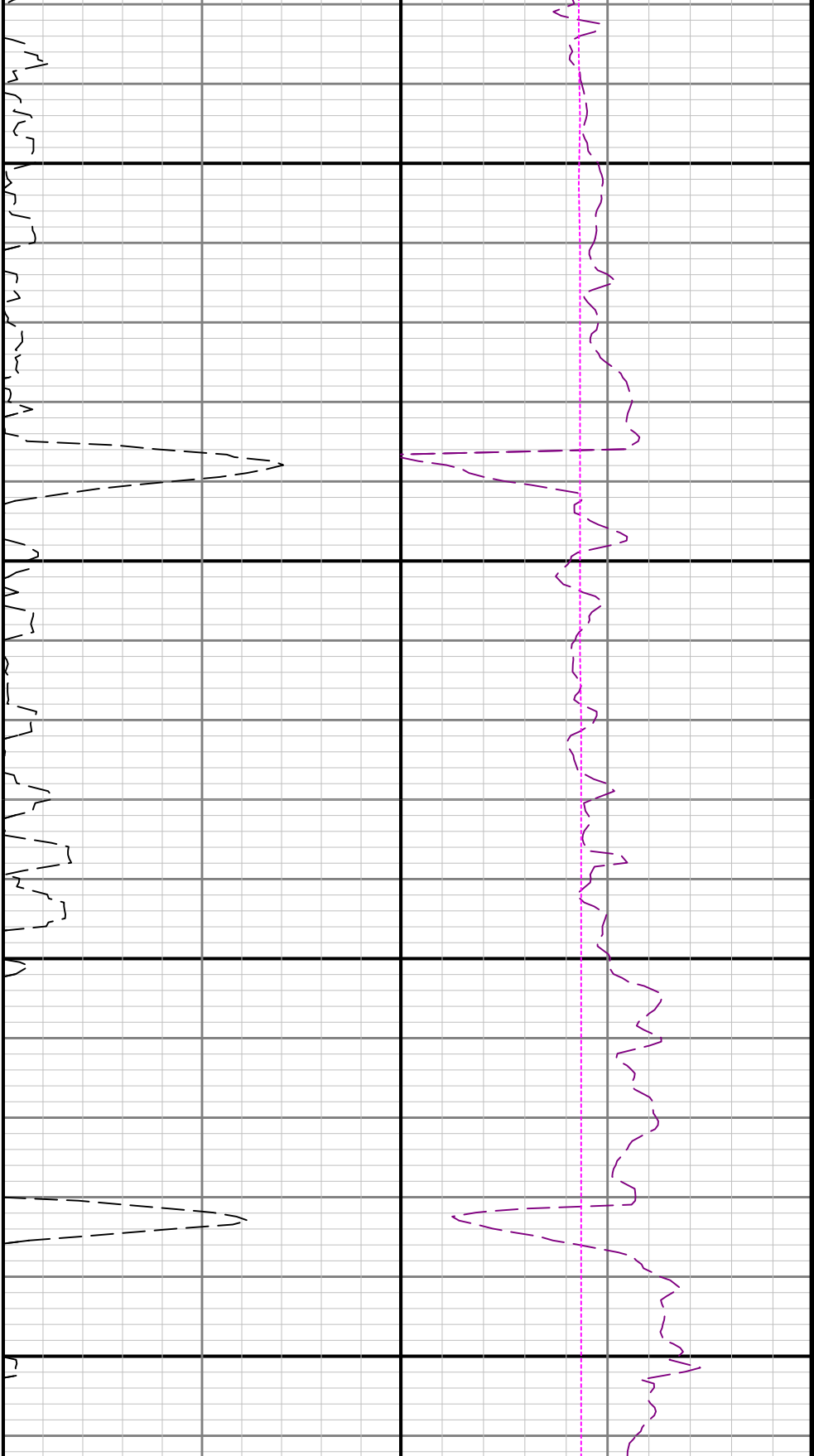




2300

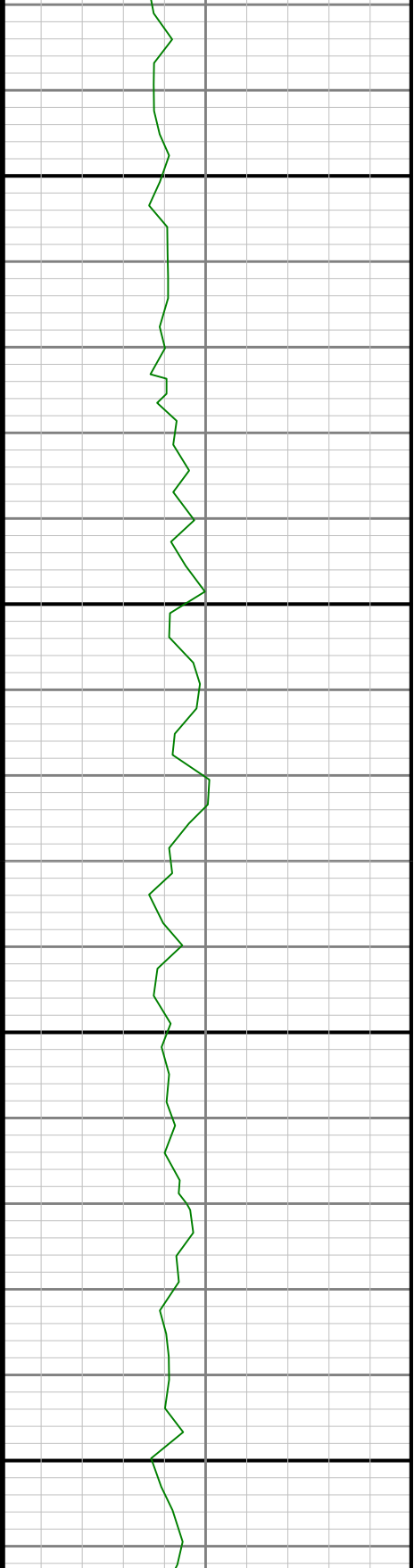
2400

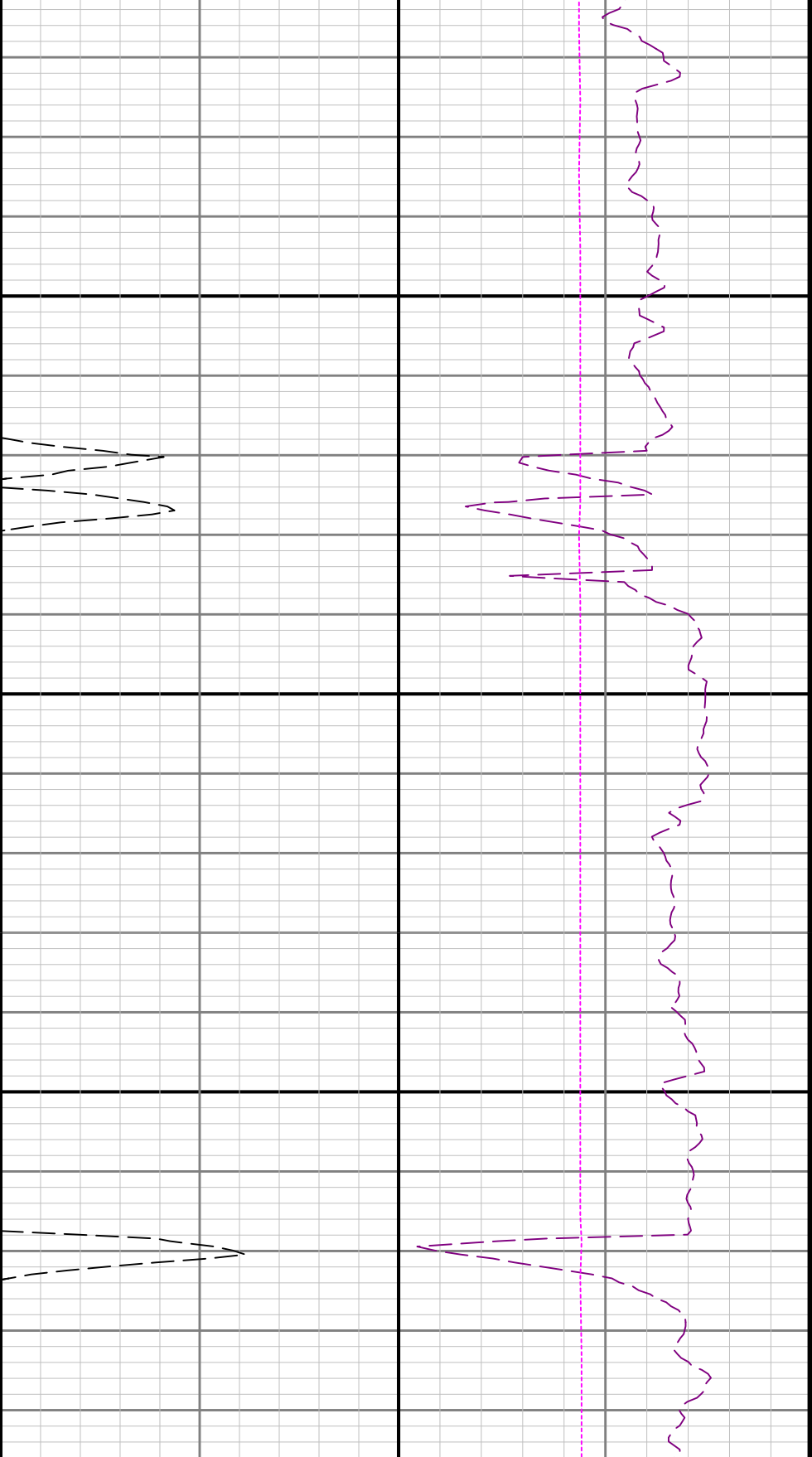




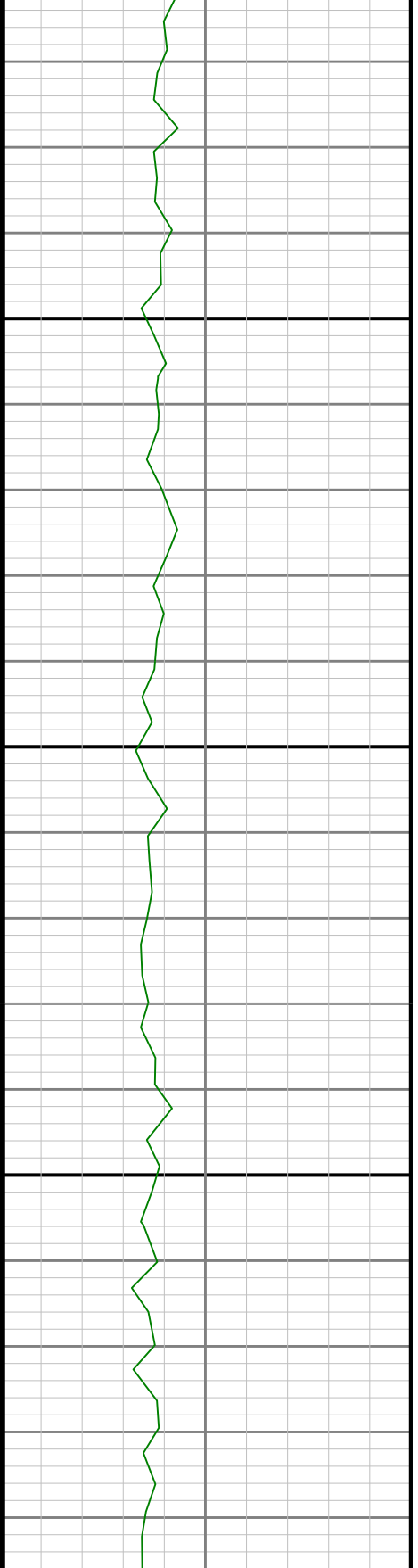
2500

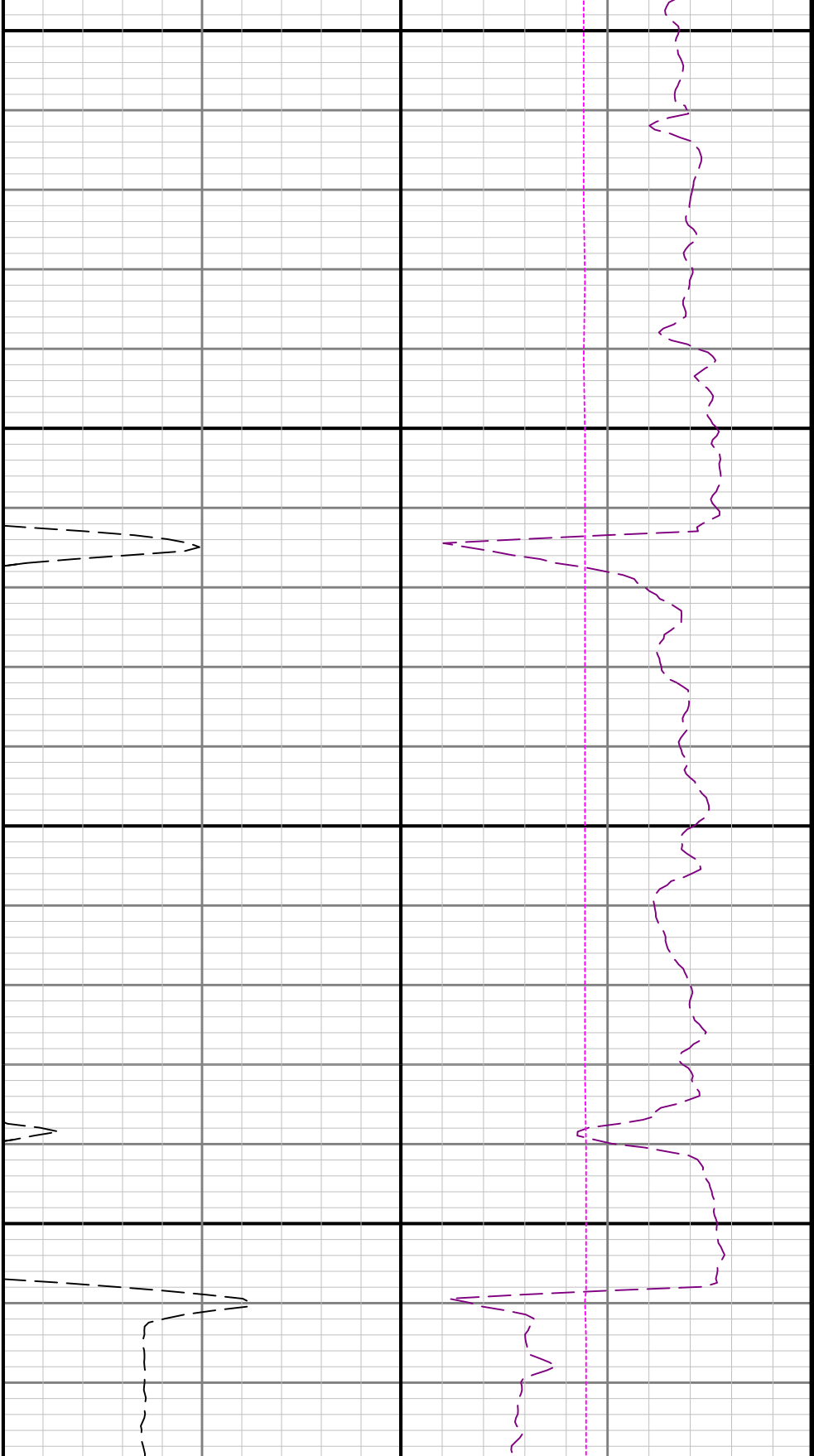
2600





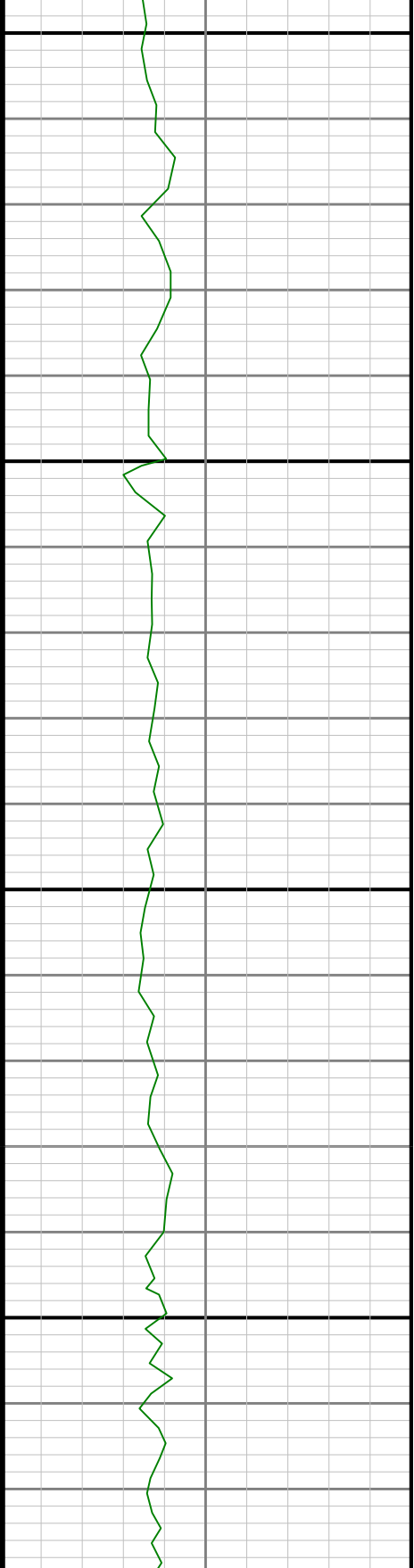
2700

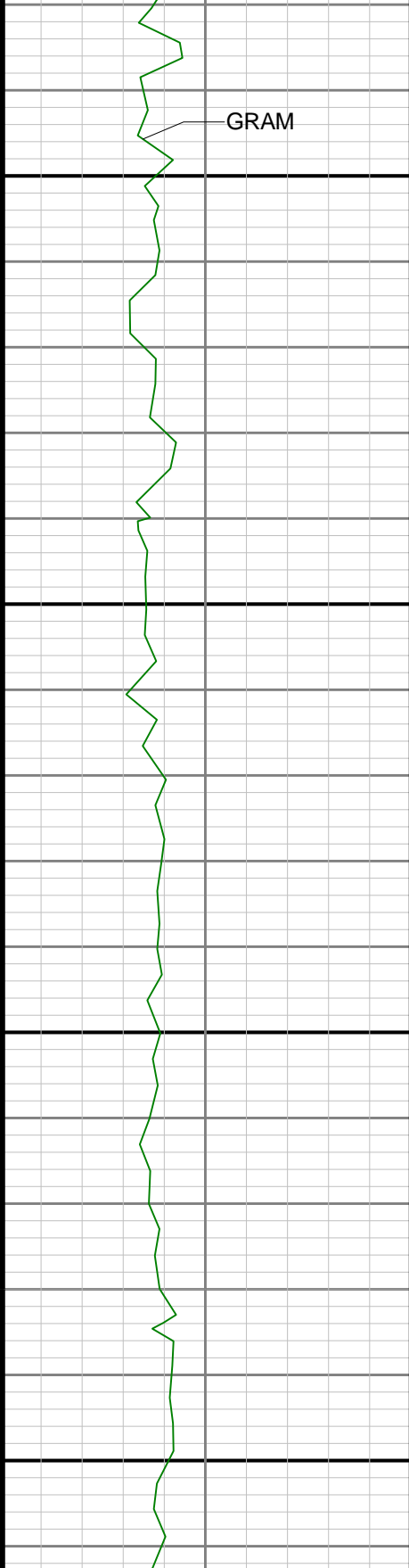




2800

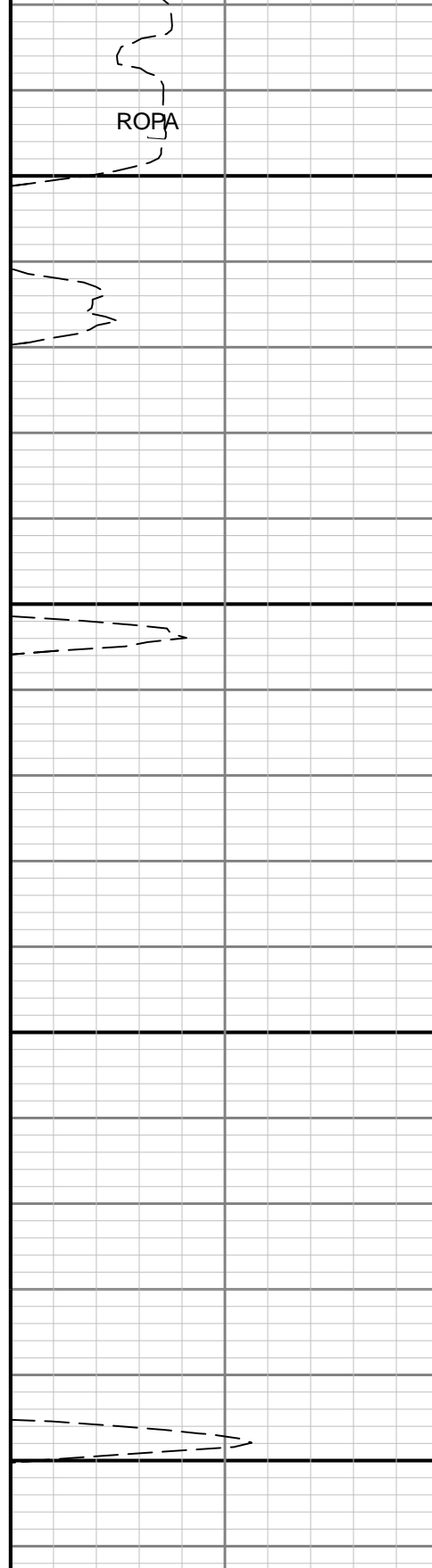
2900





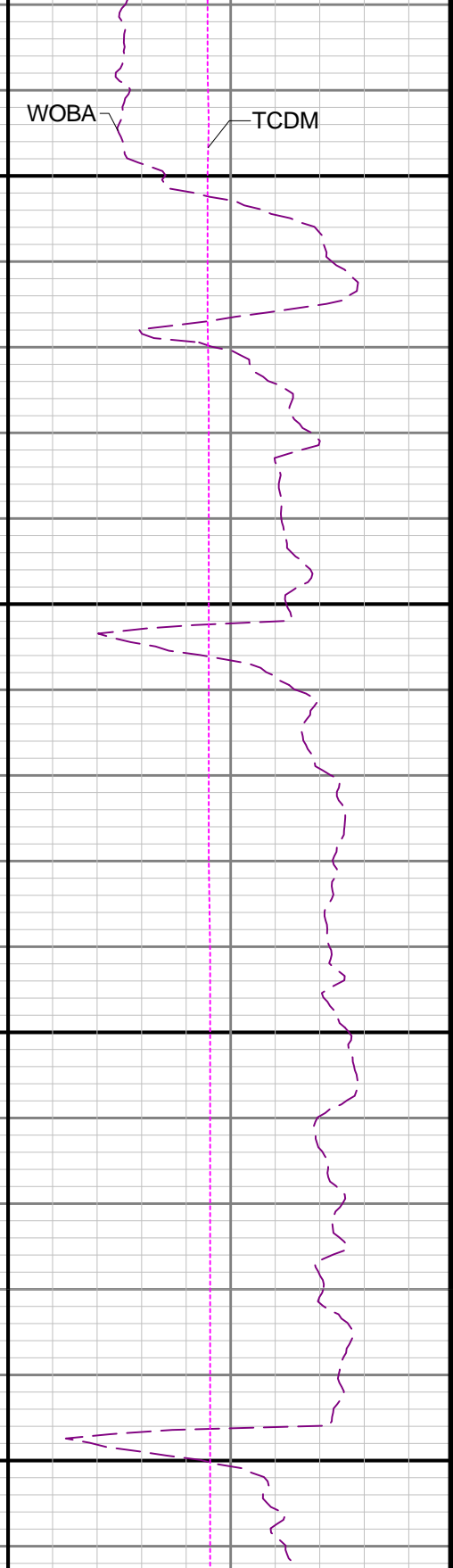
3000

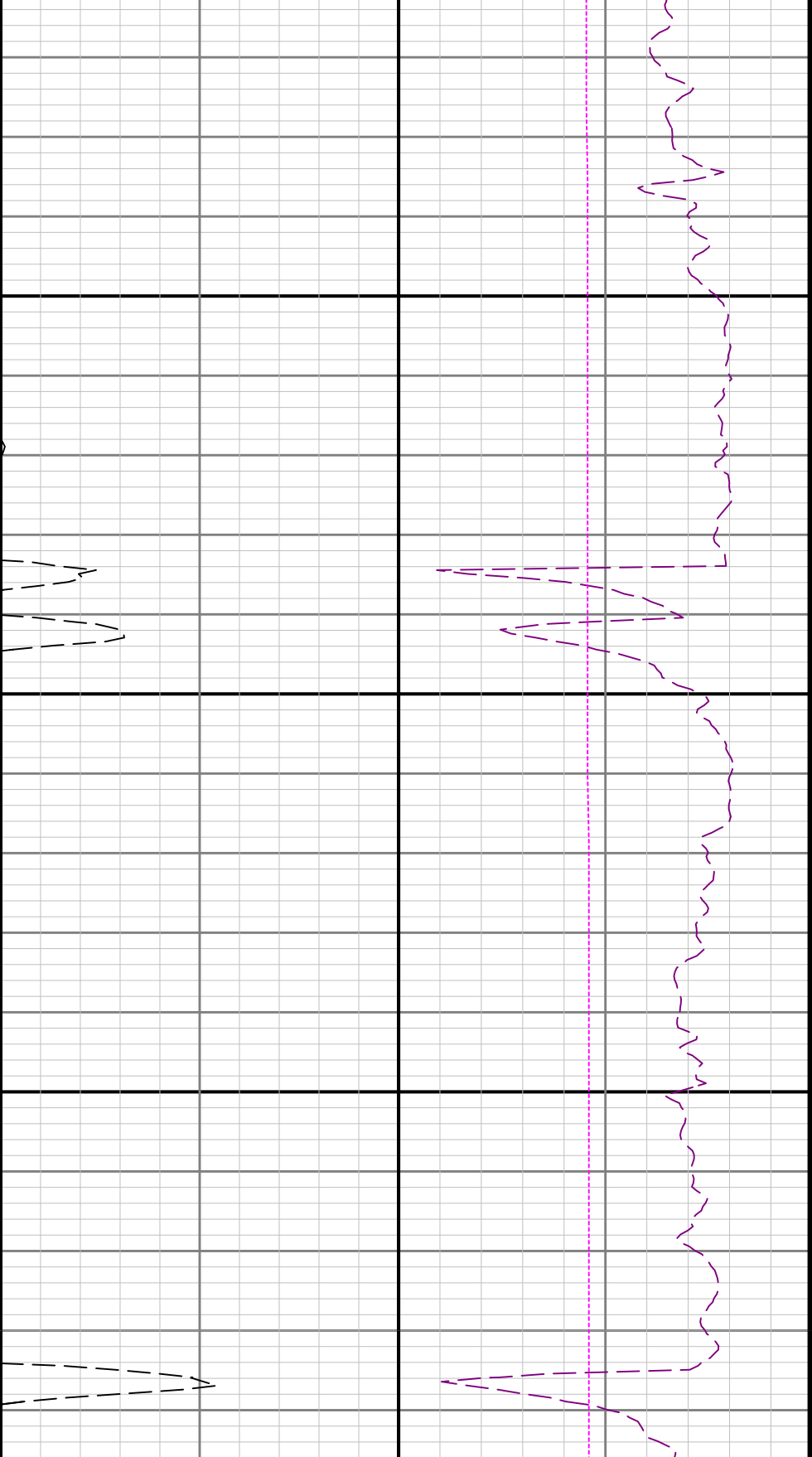
3100



WOBA

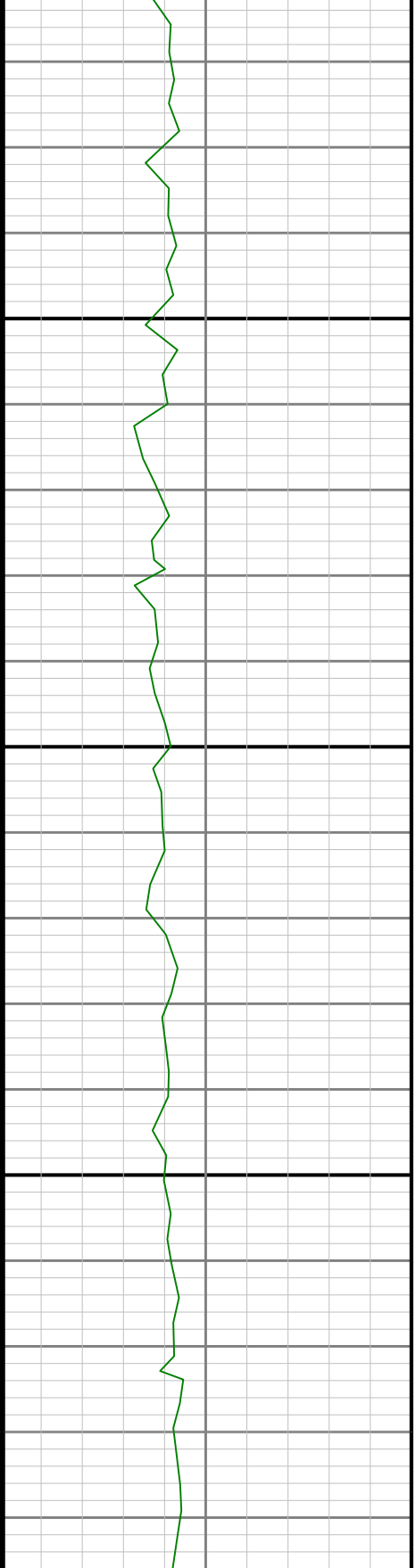
TCDM

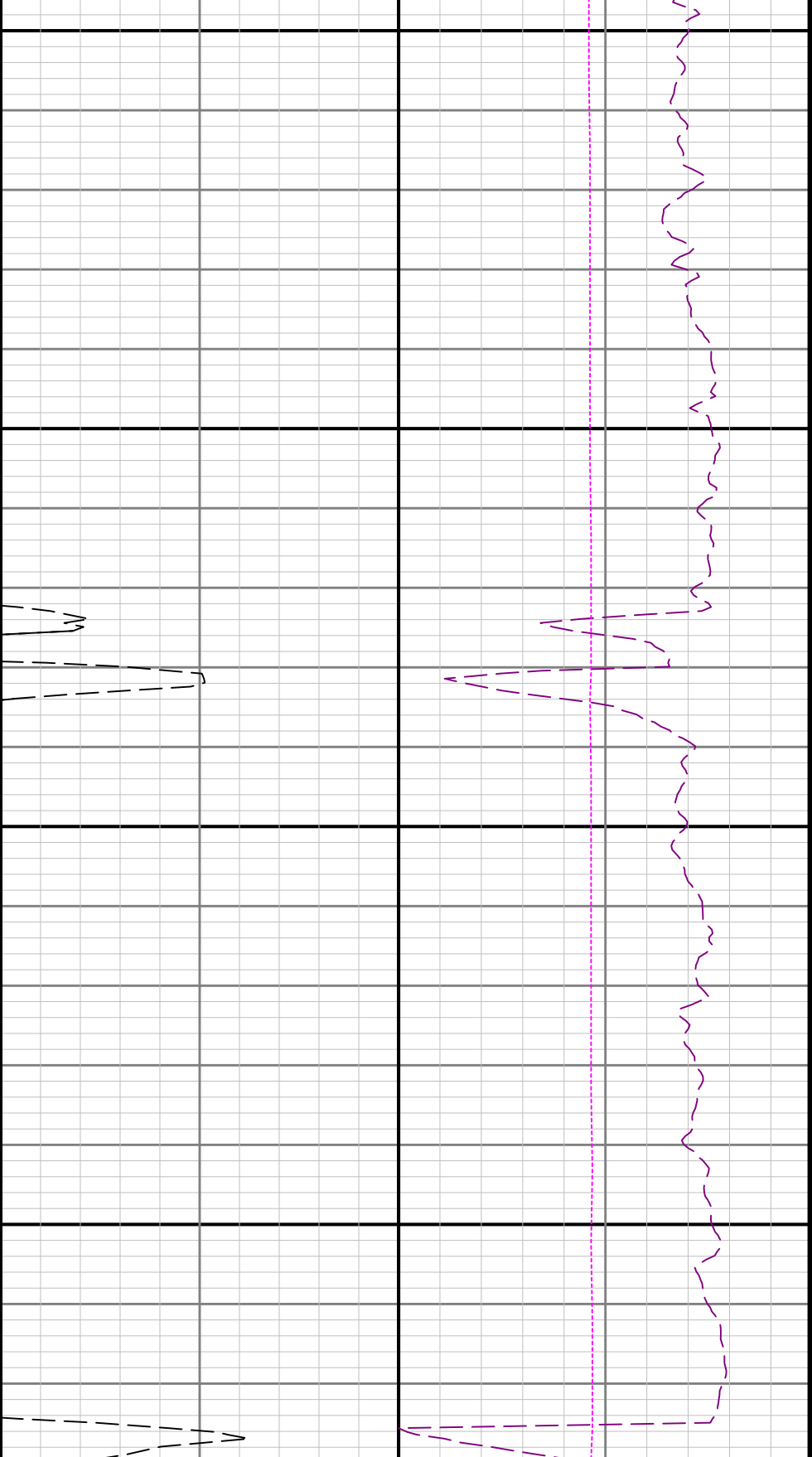




3200

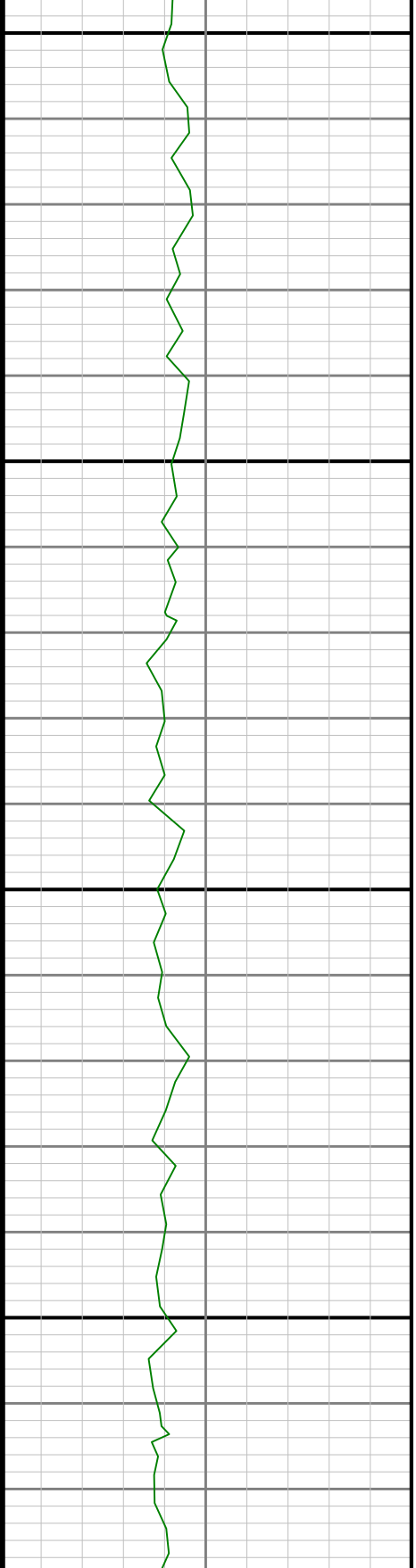
3300

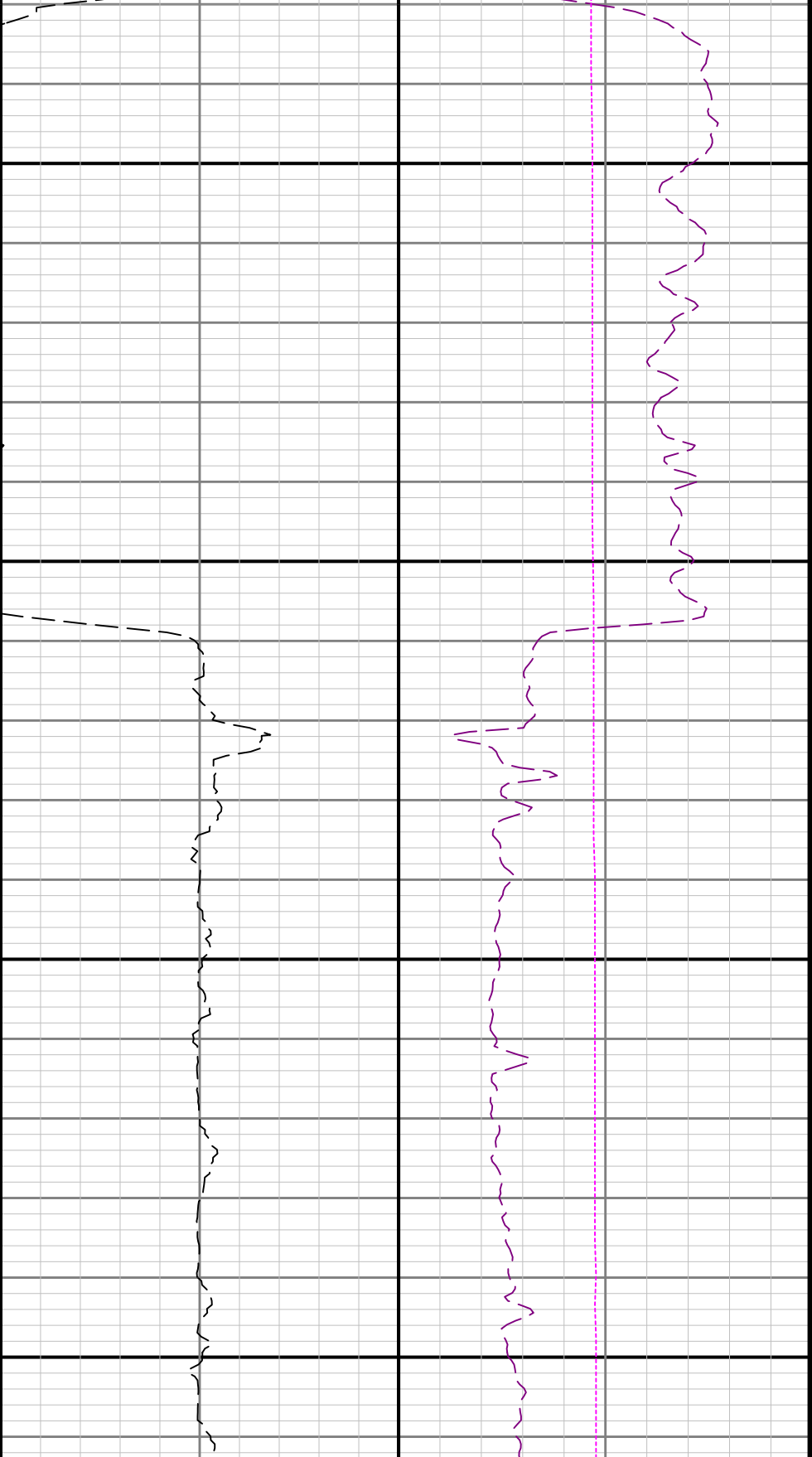




3400

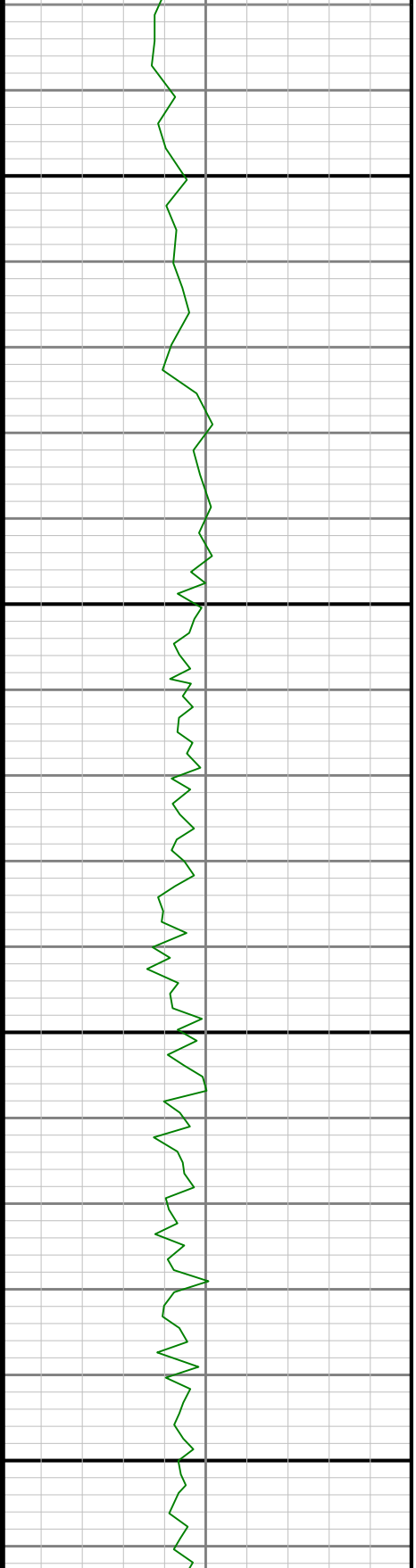
3500

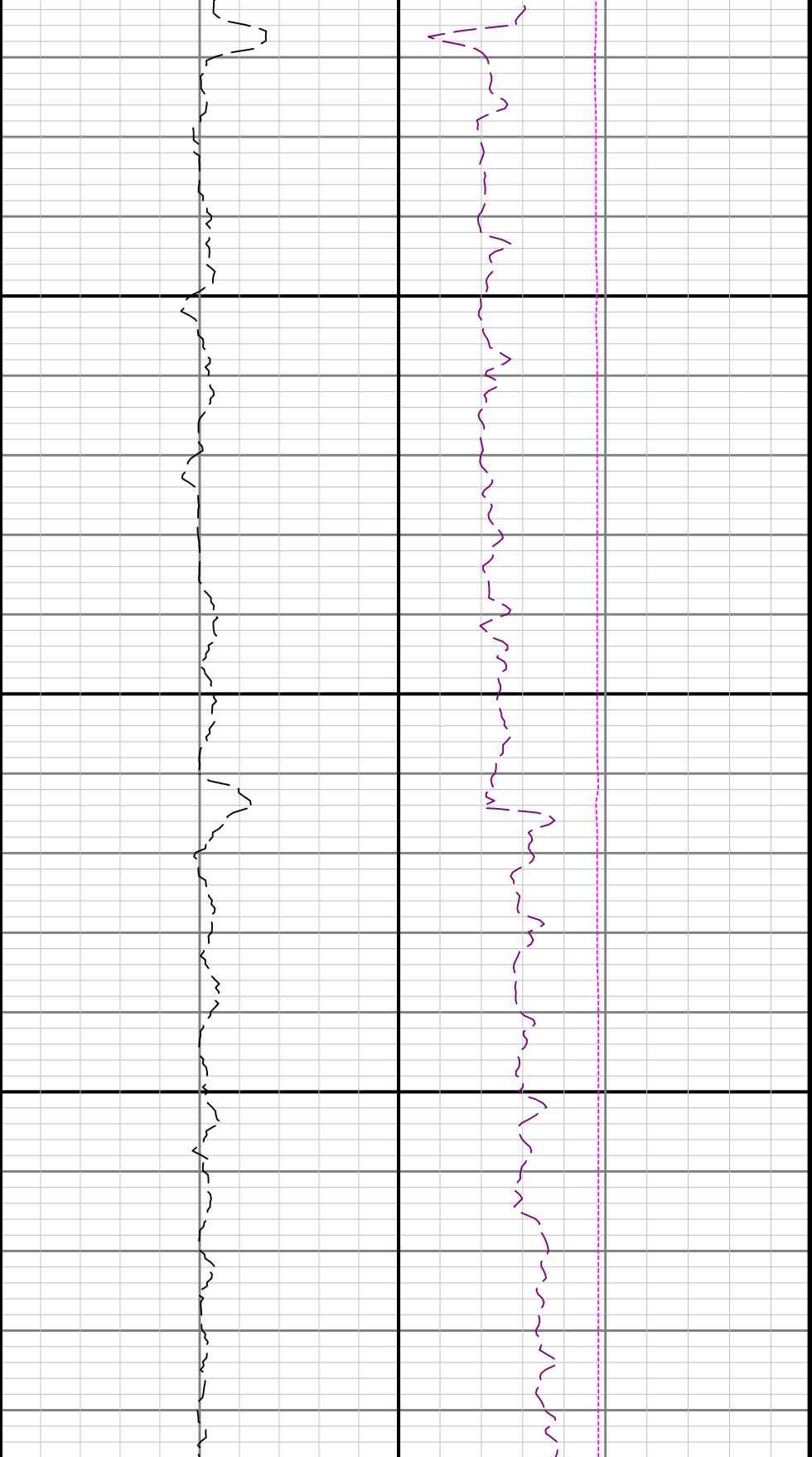




3600

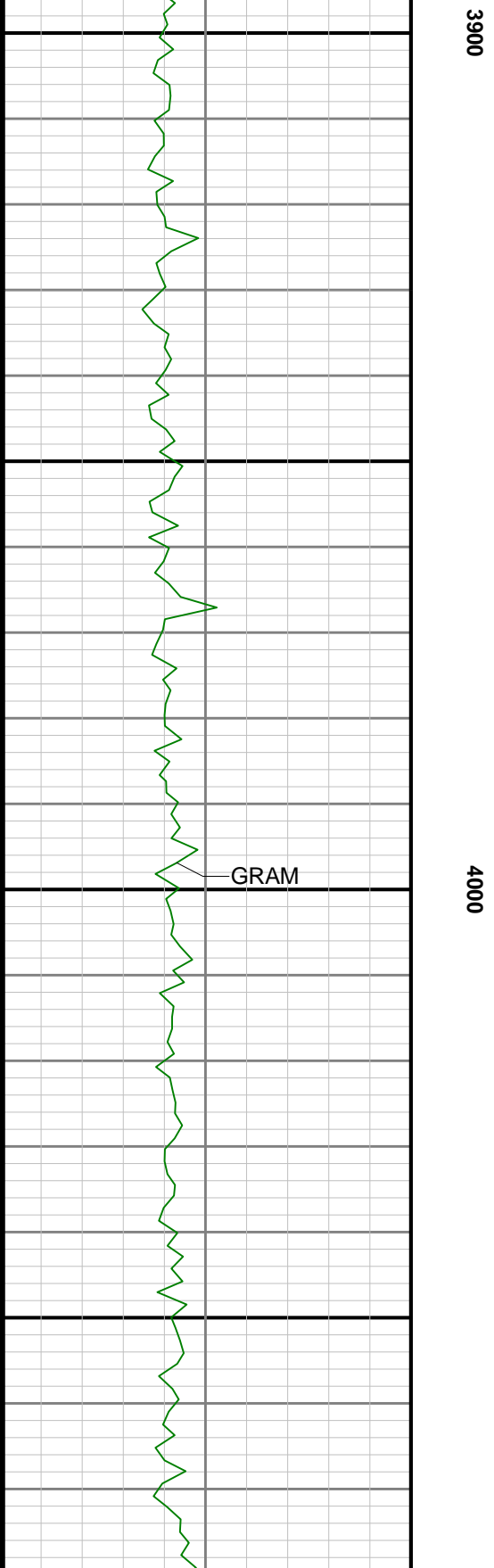
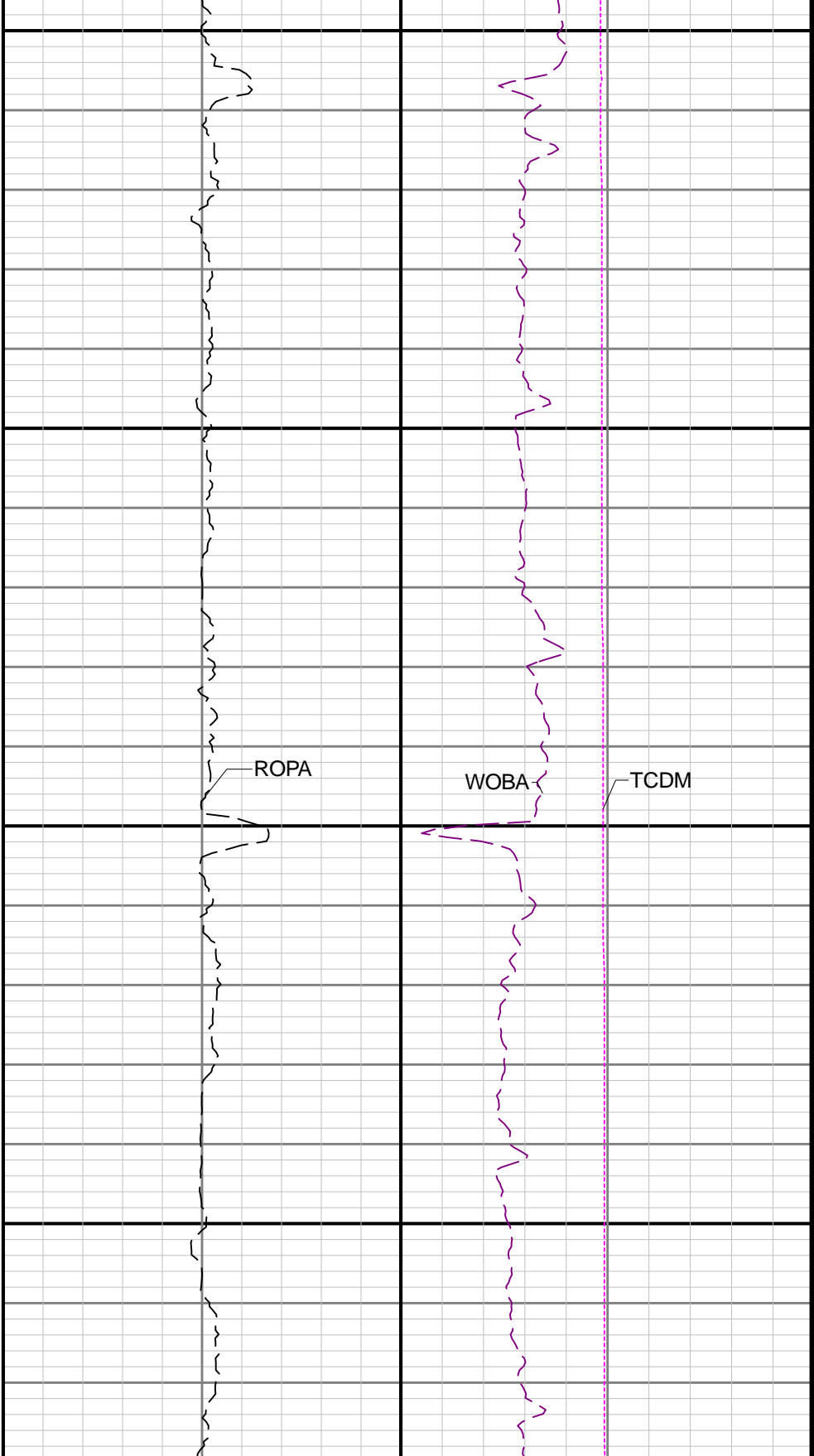
3700

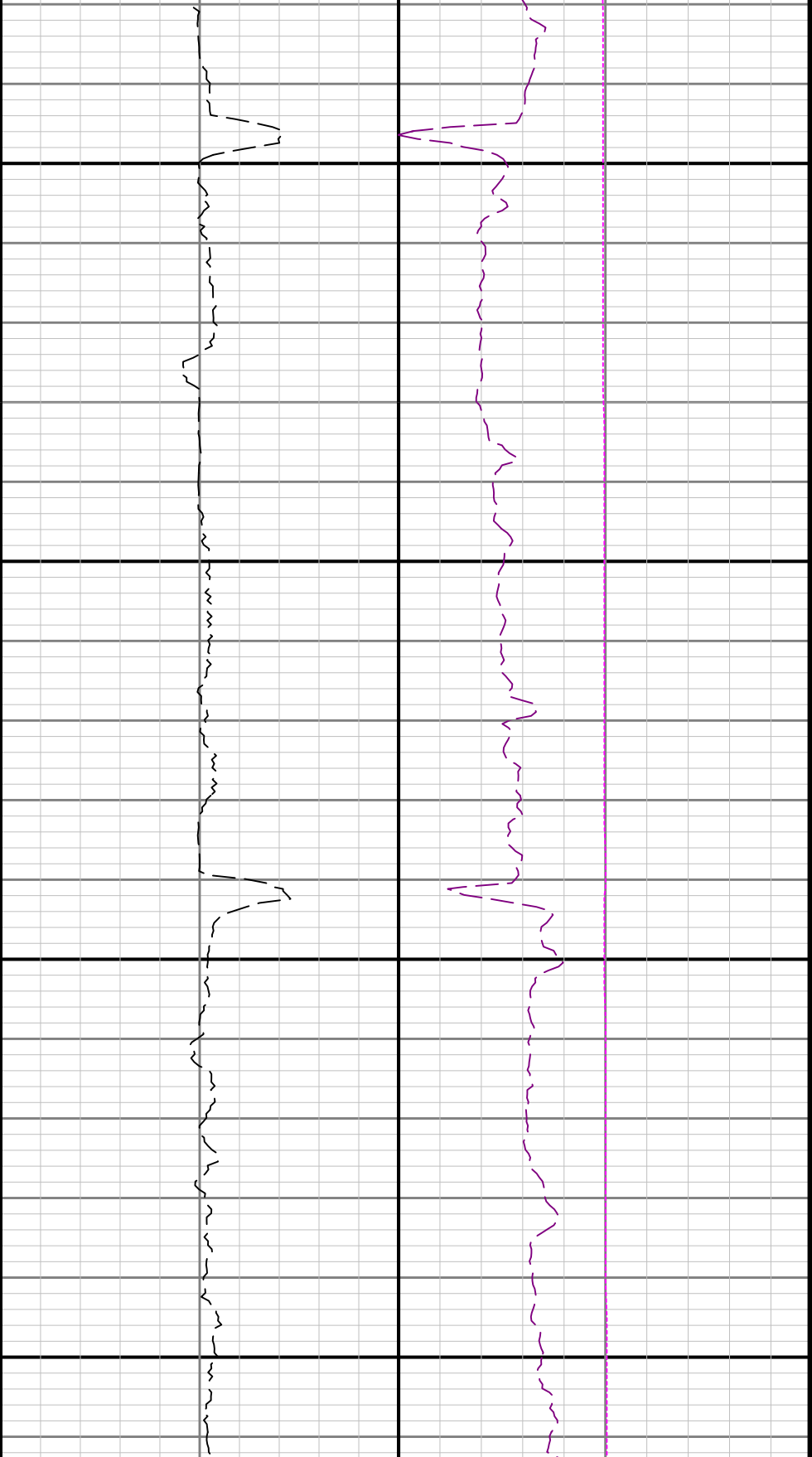




3800

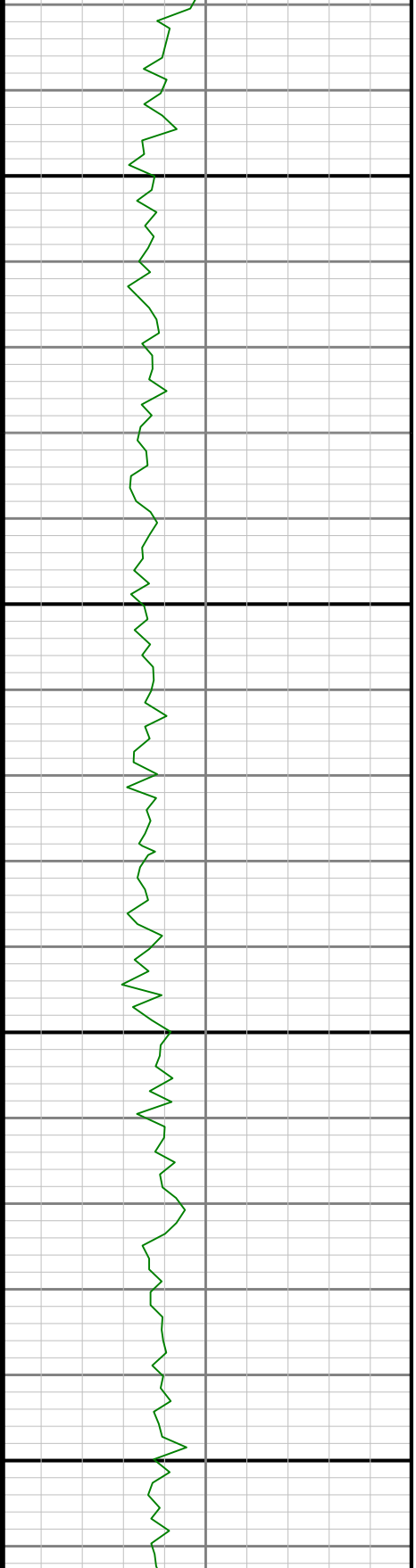


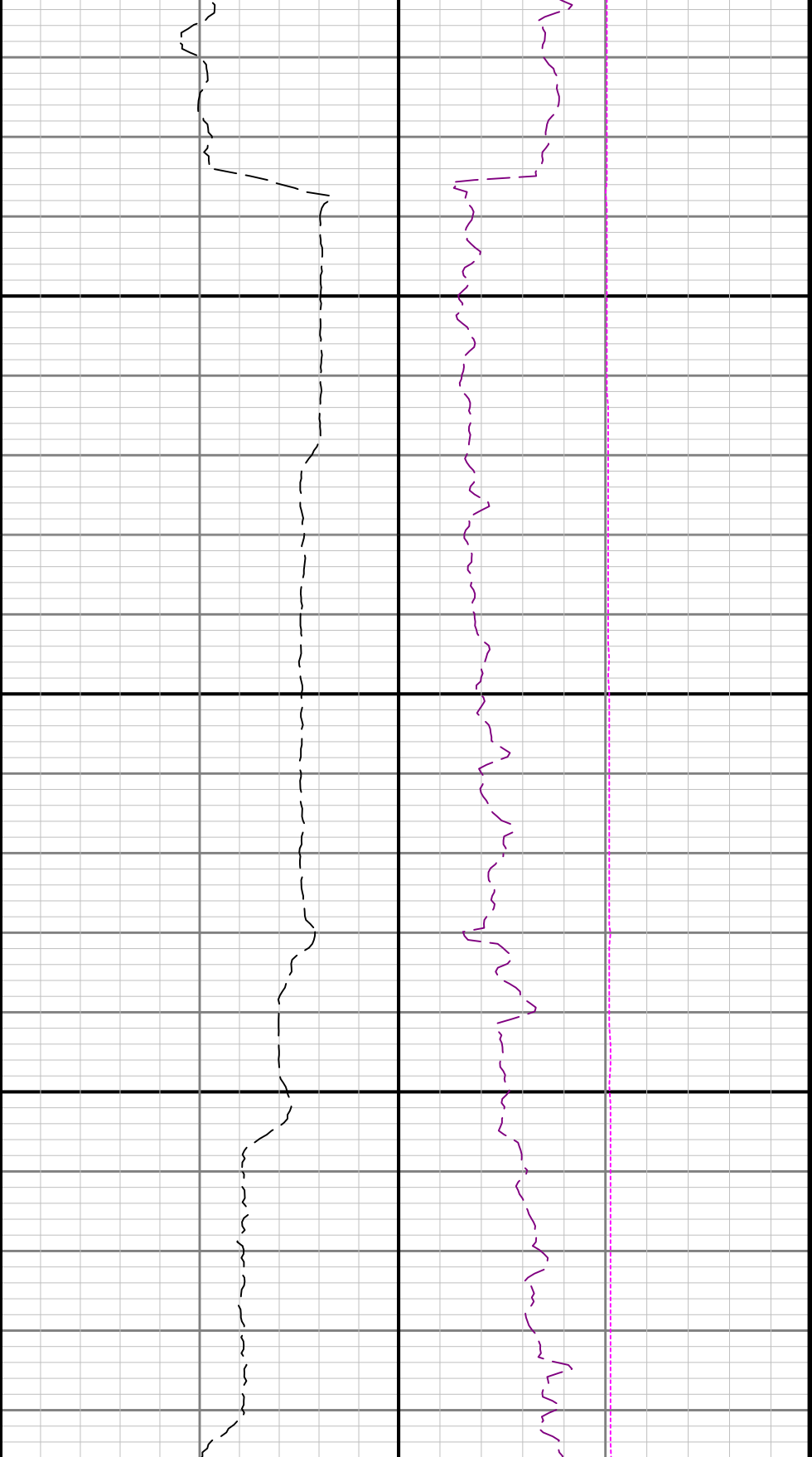




4100

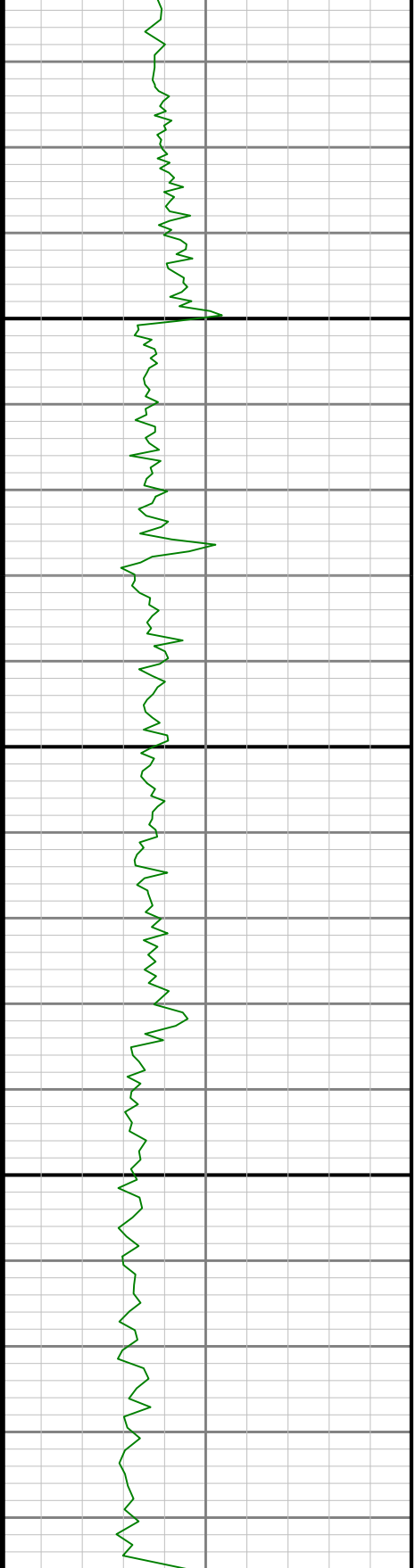
4200

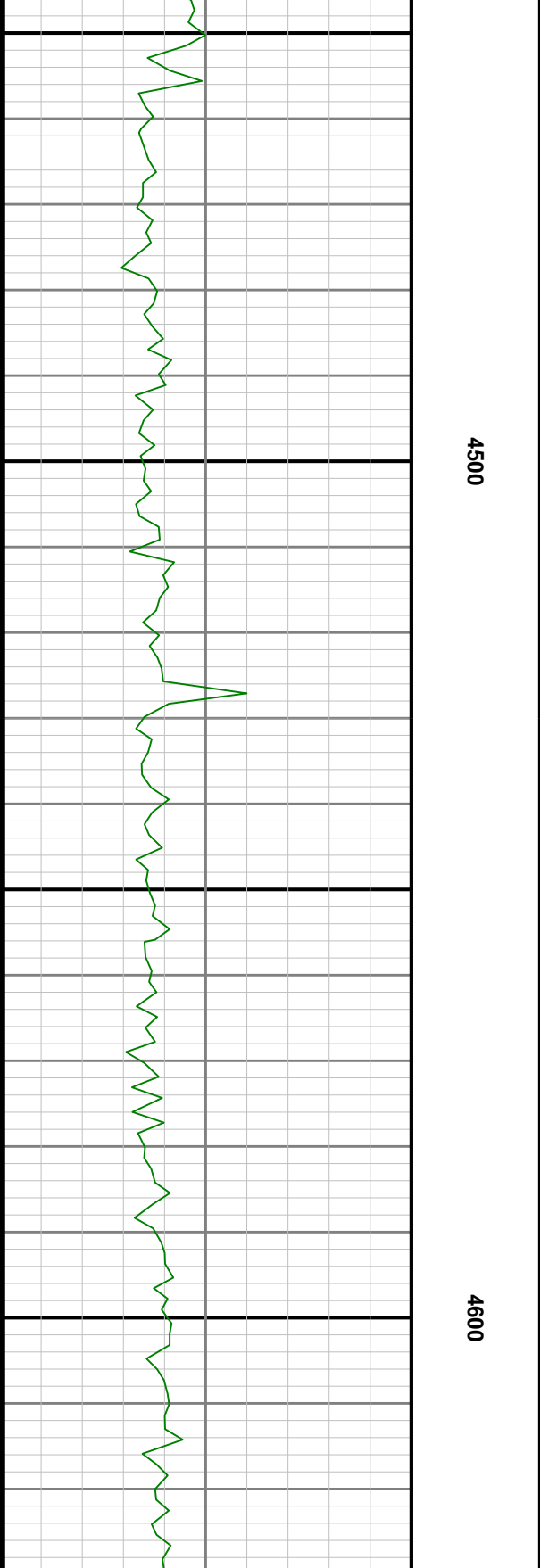
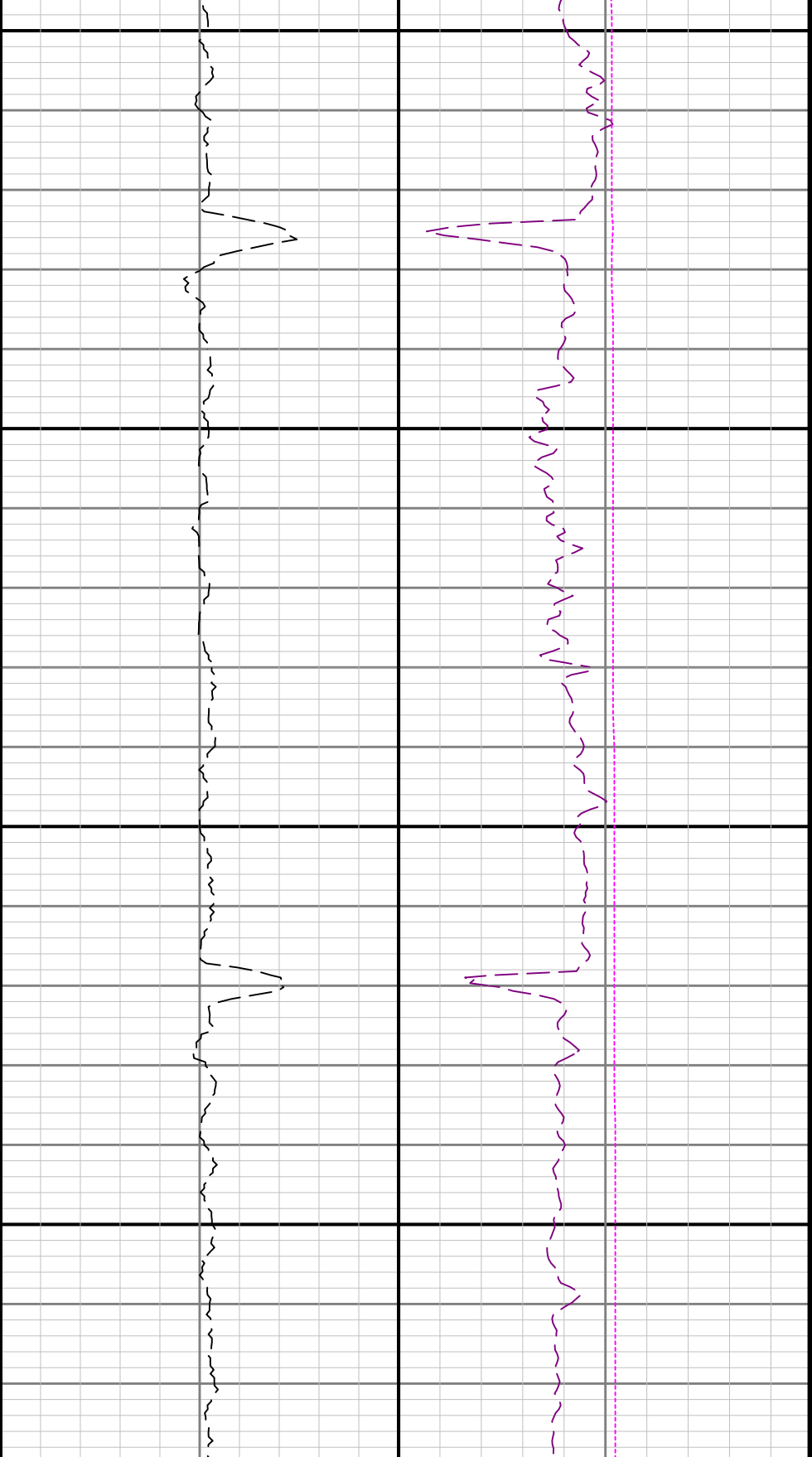


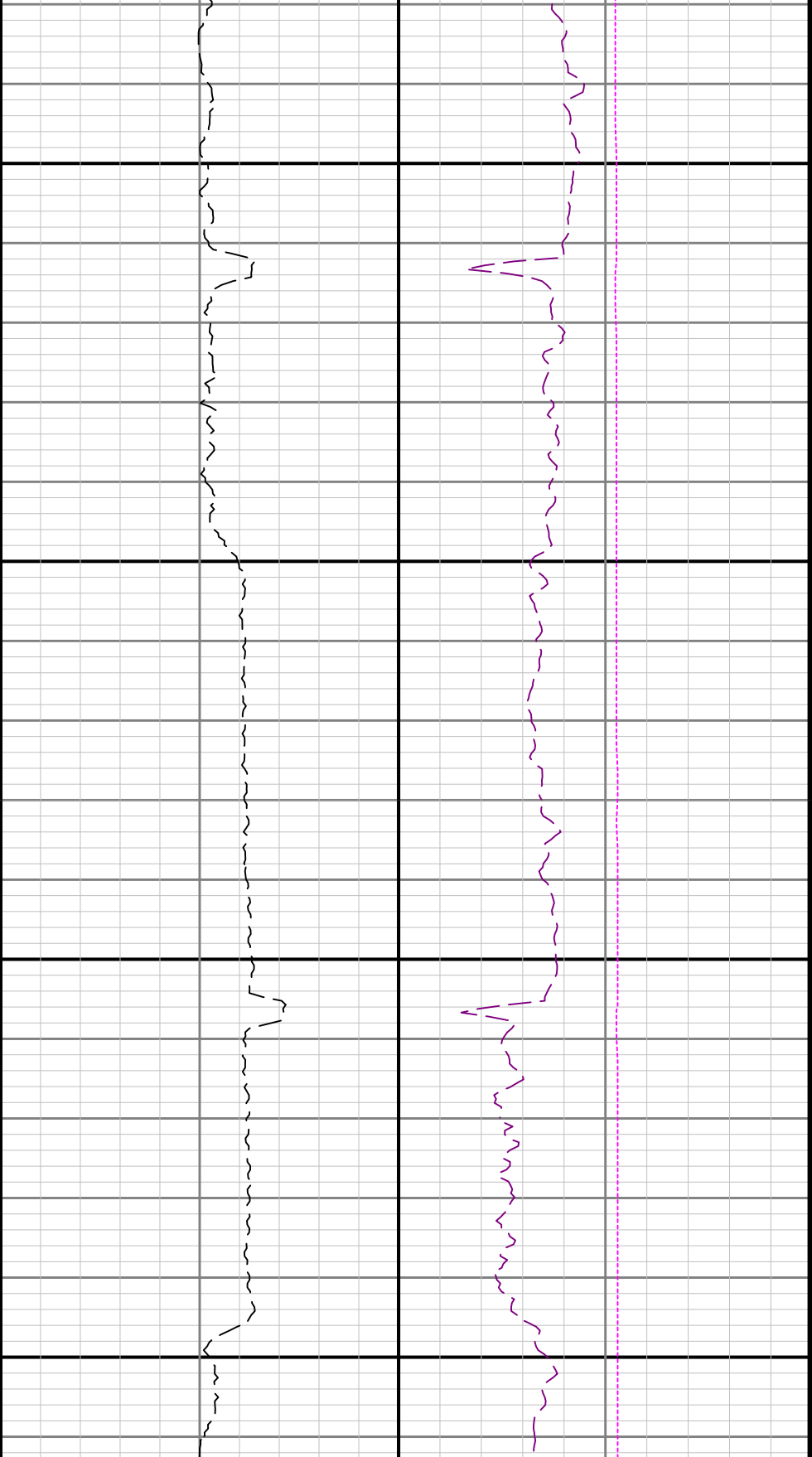


4300

4400

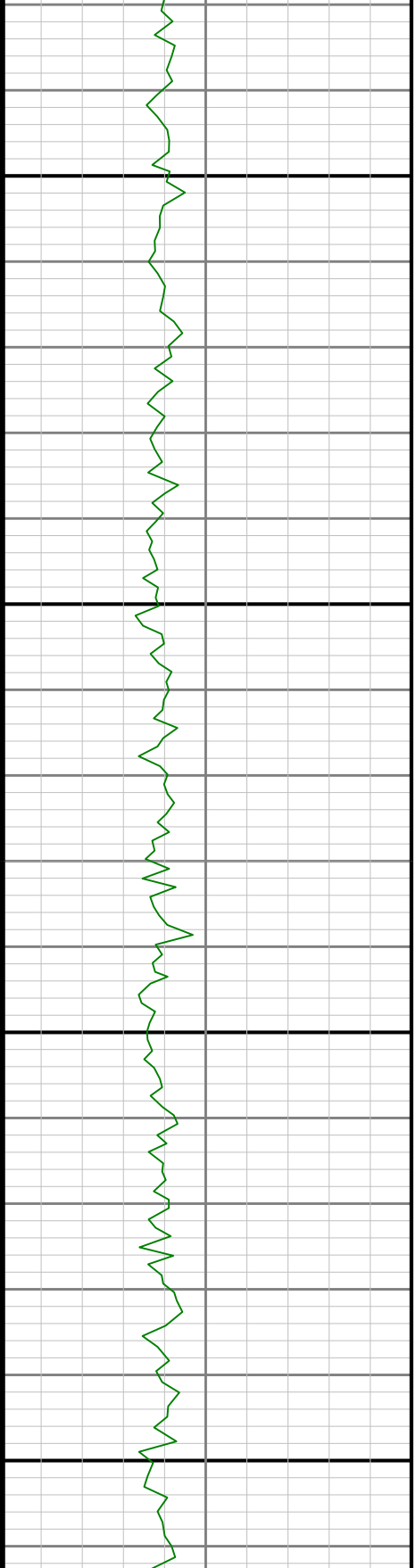


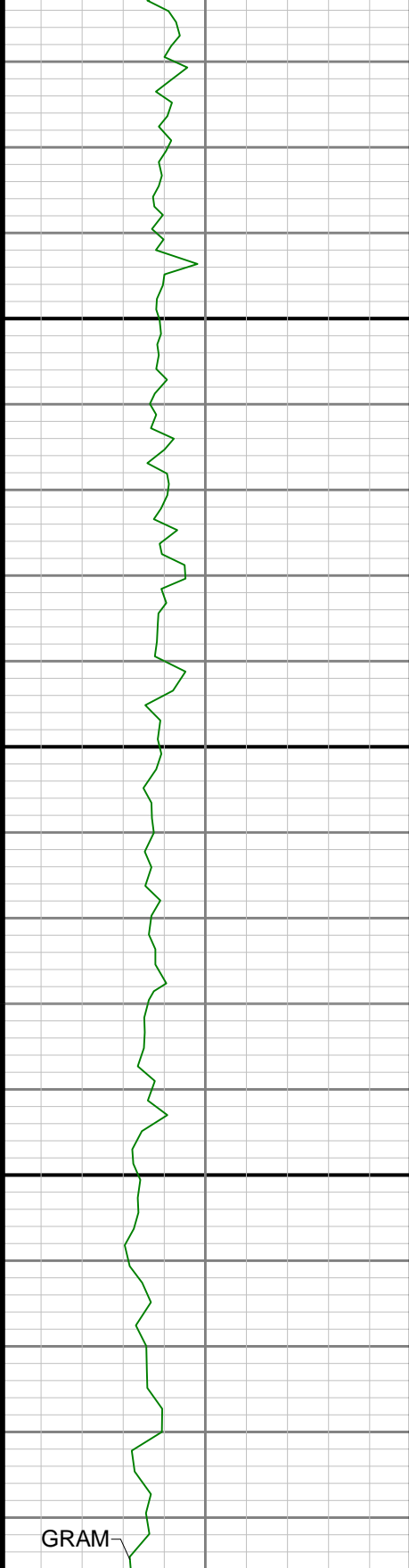




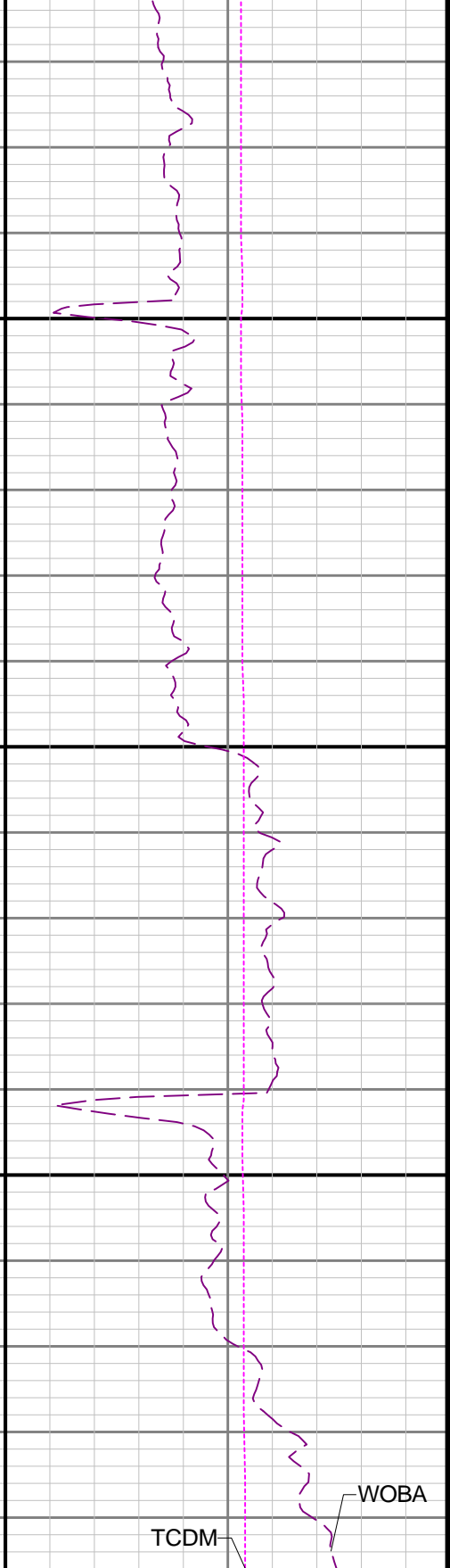
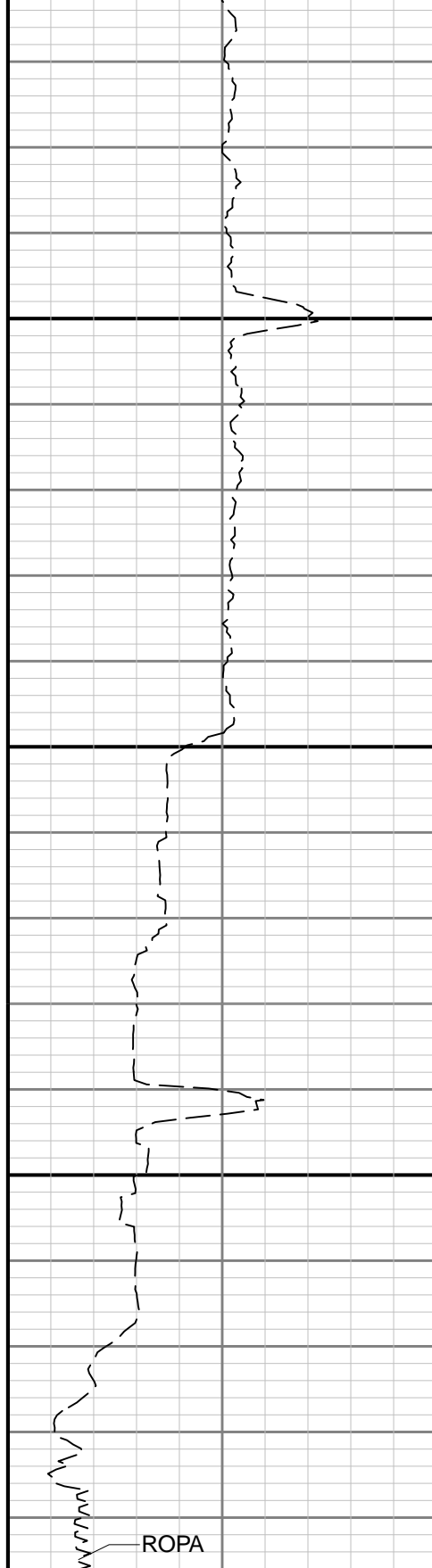
4700

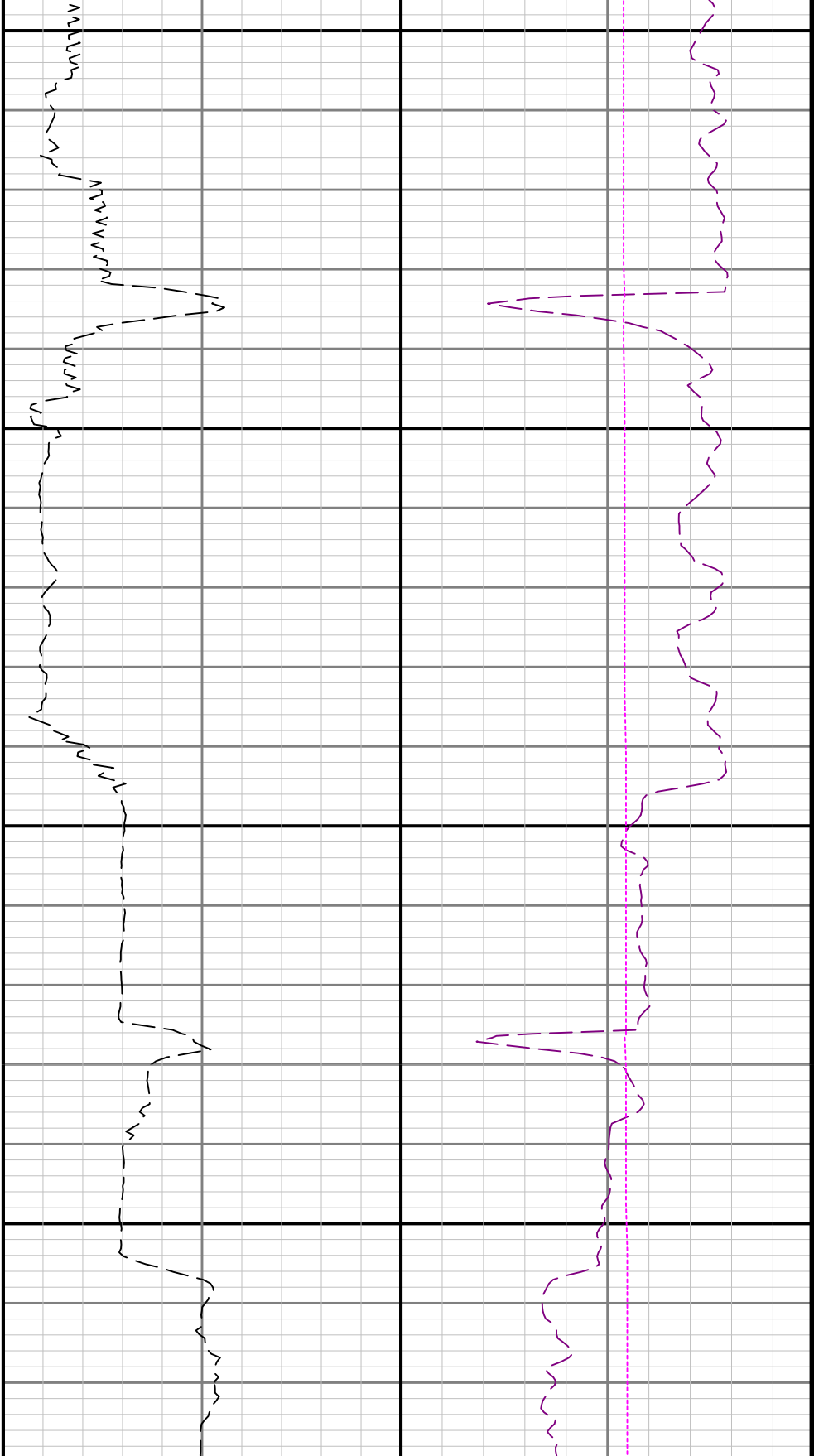
4800





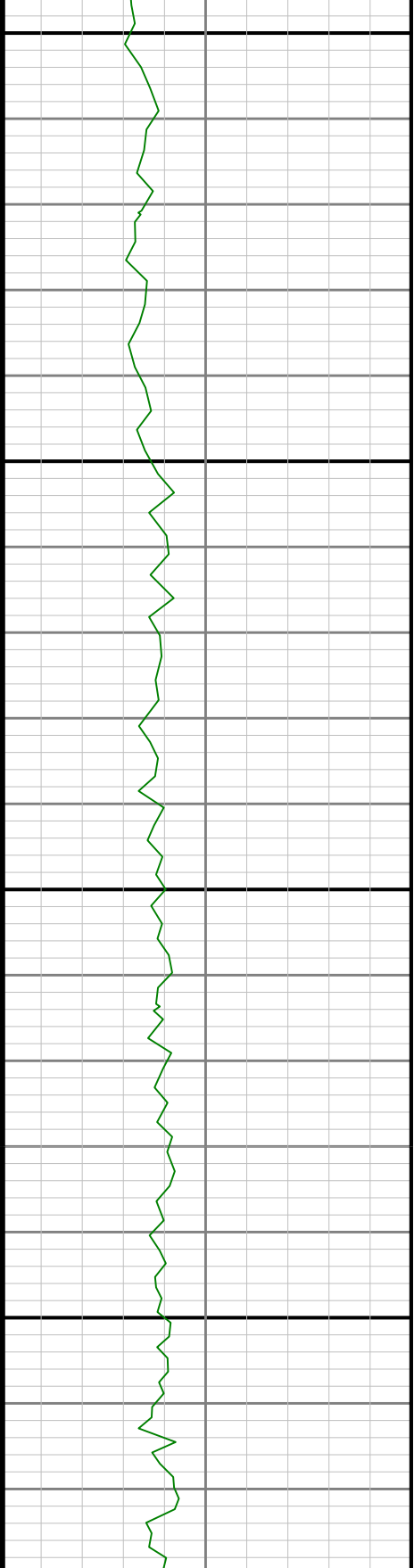
4900

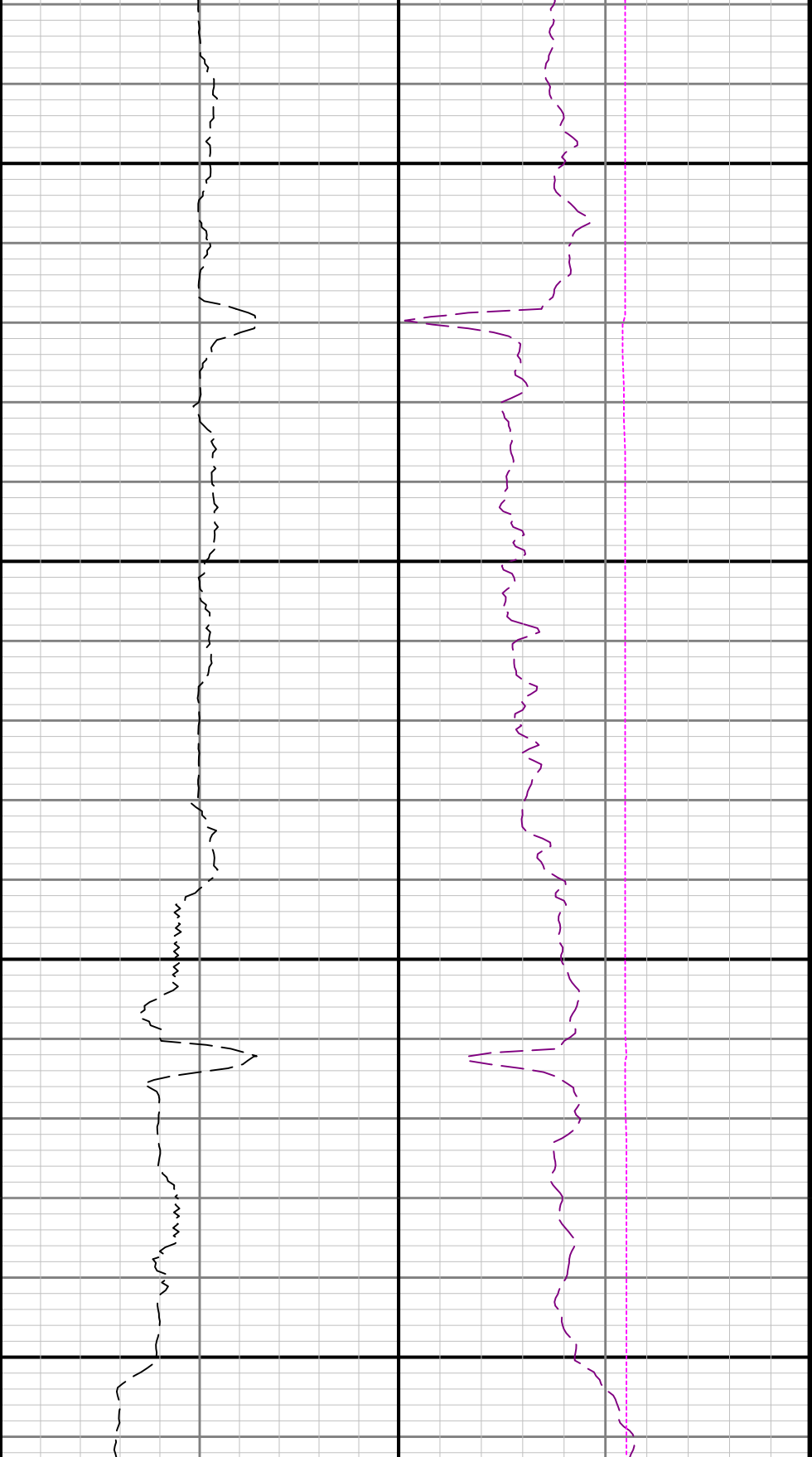




5000

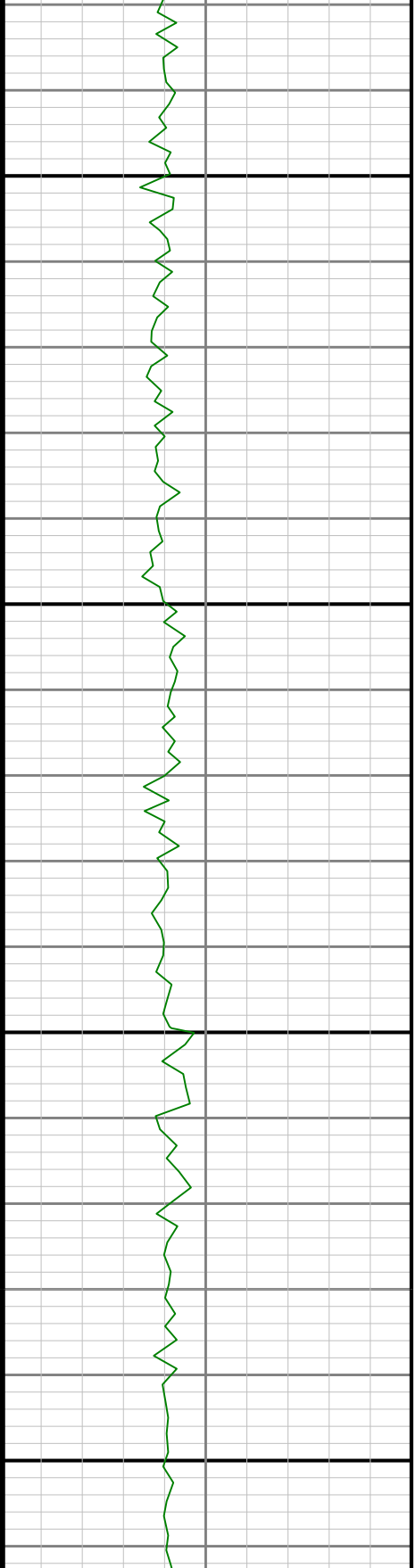
5100

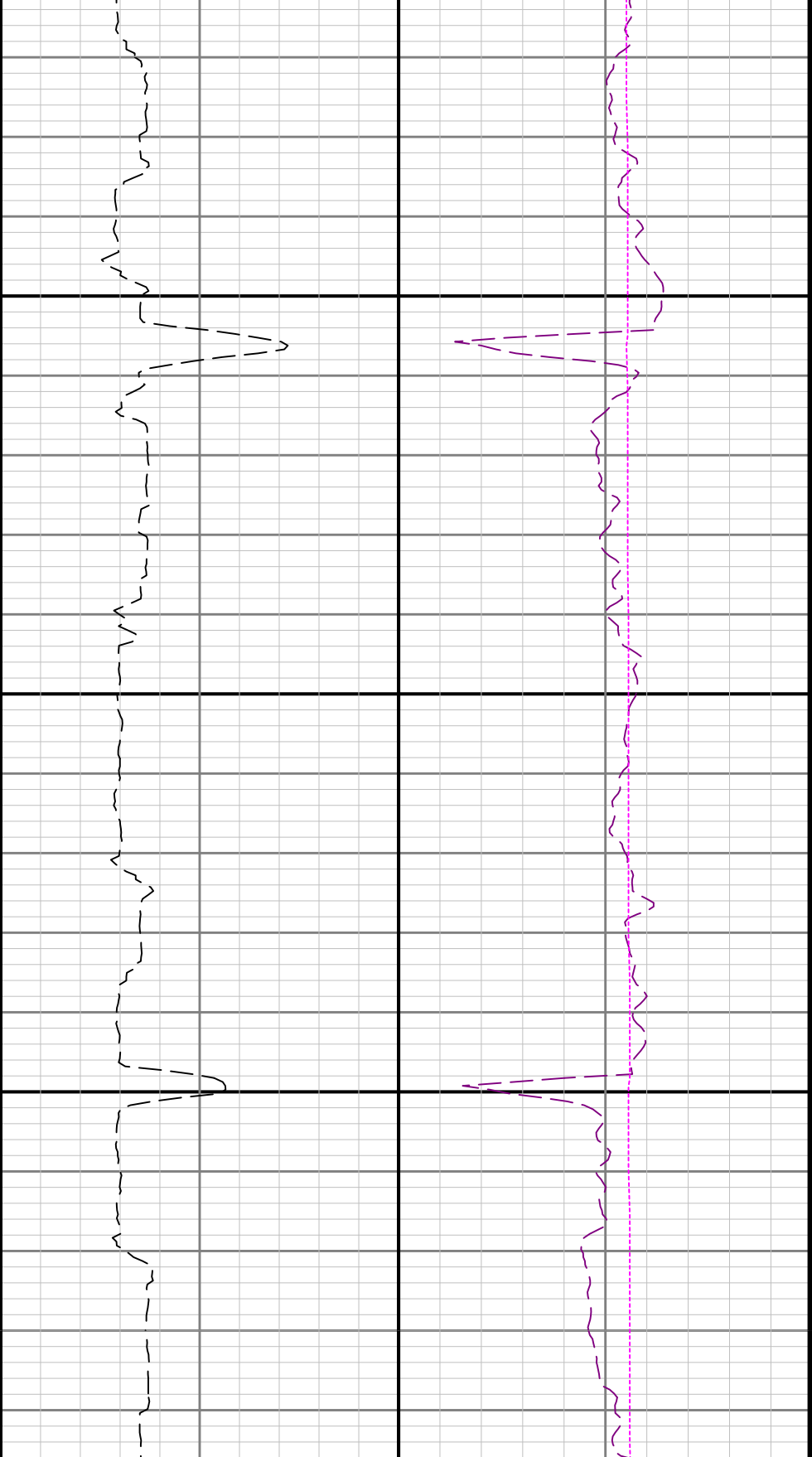




5200

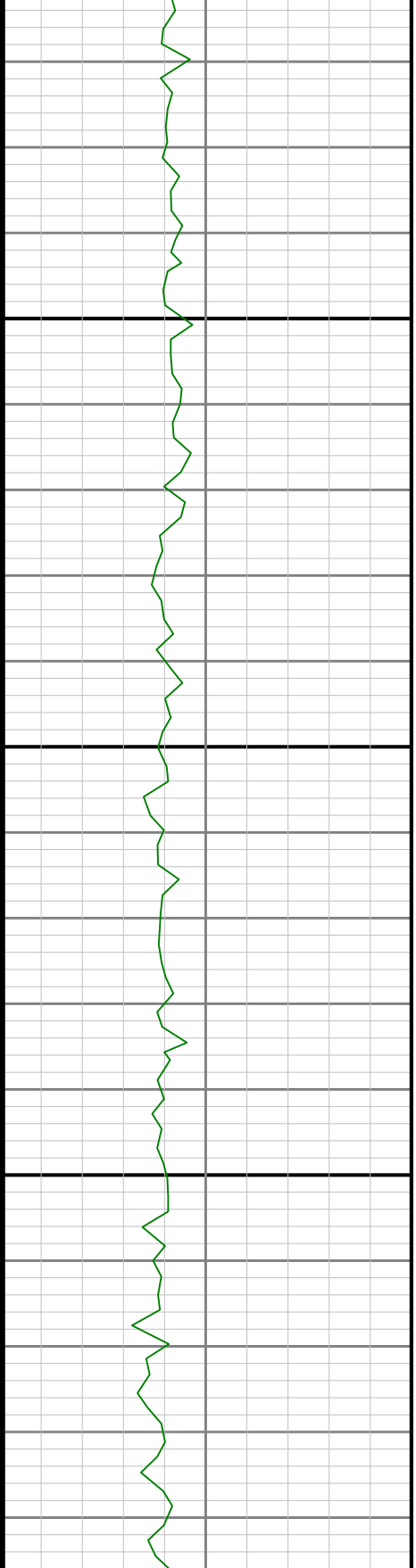
5300

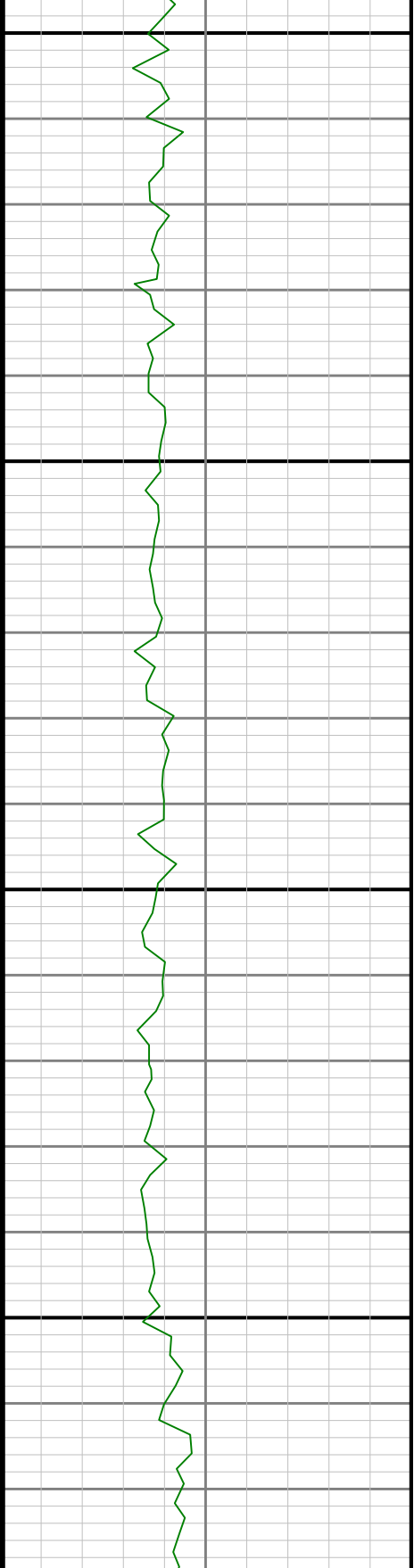
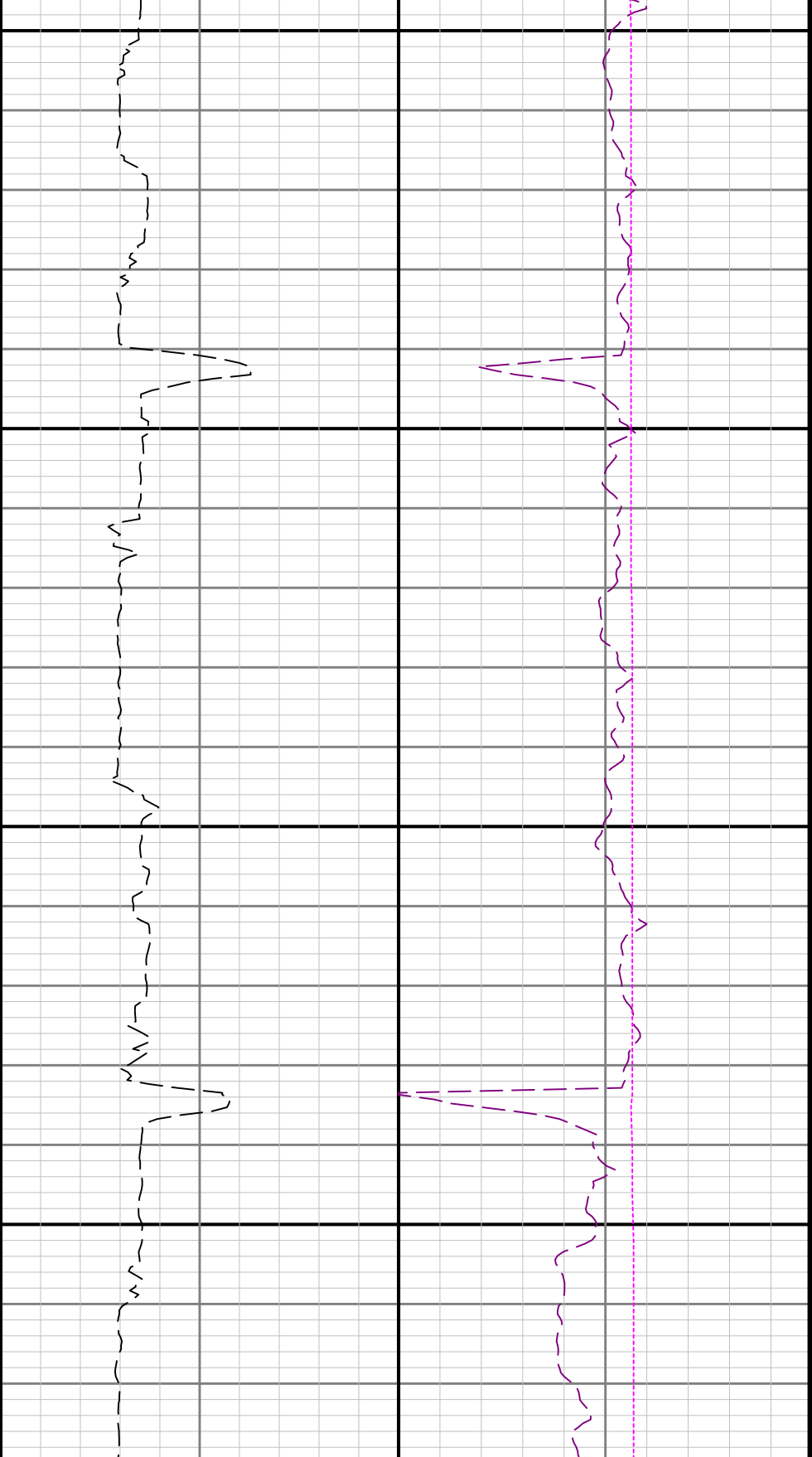


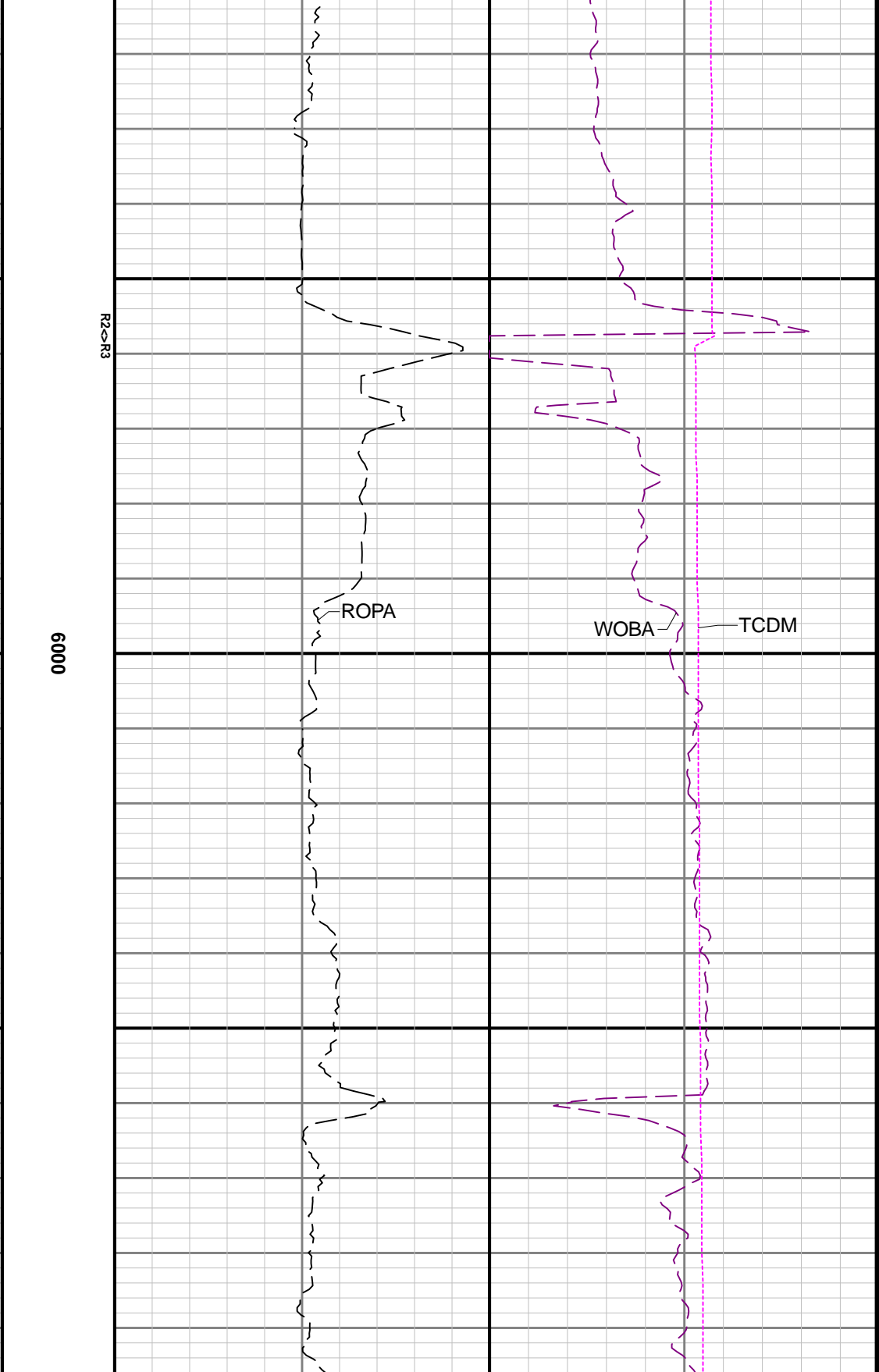
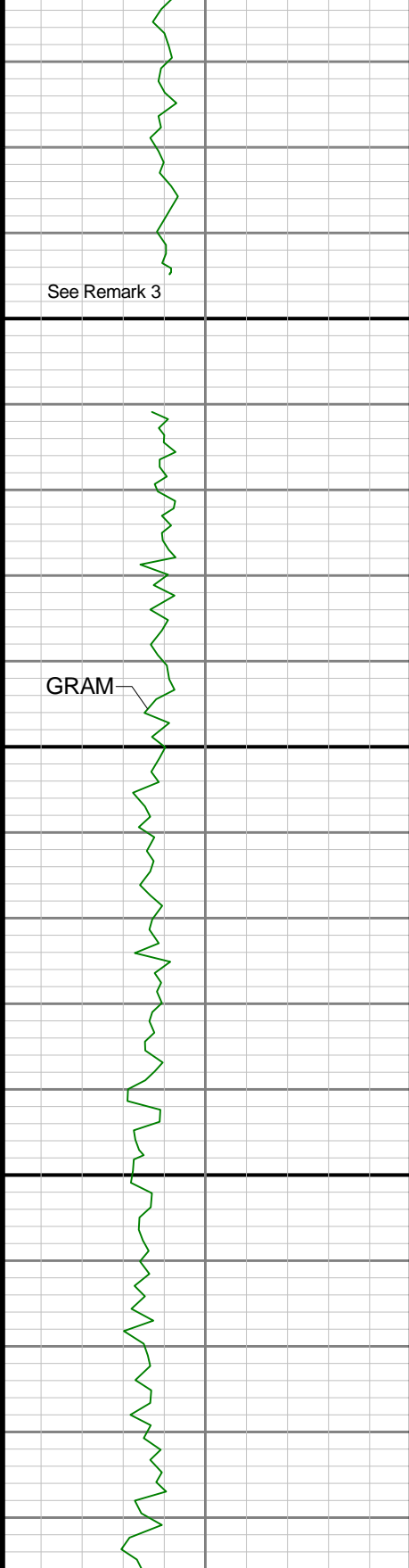


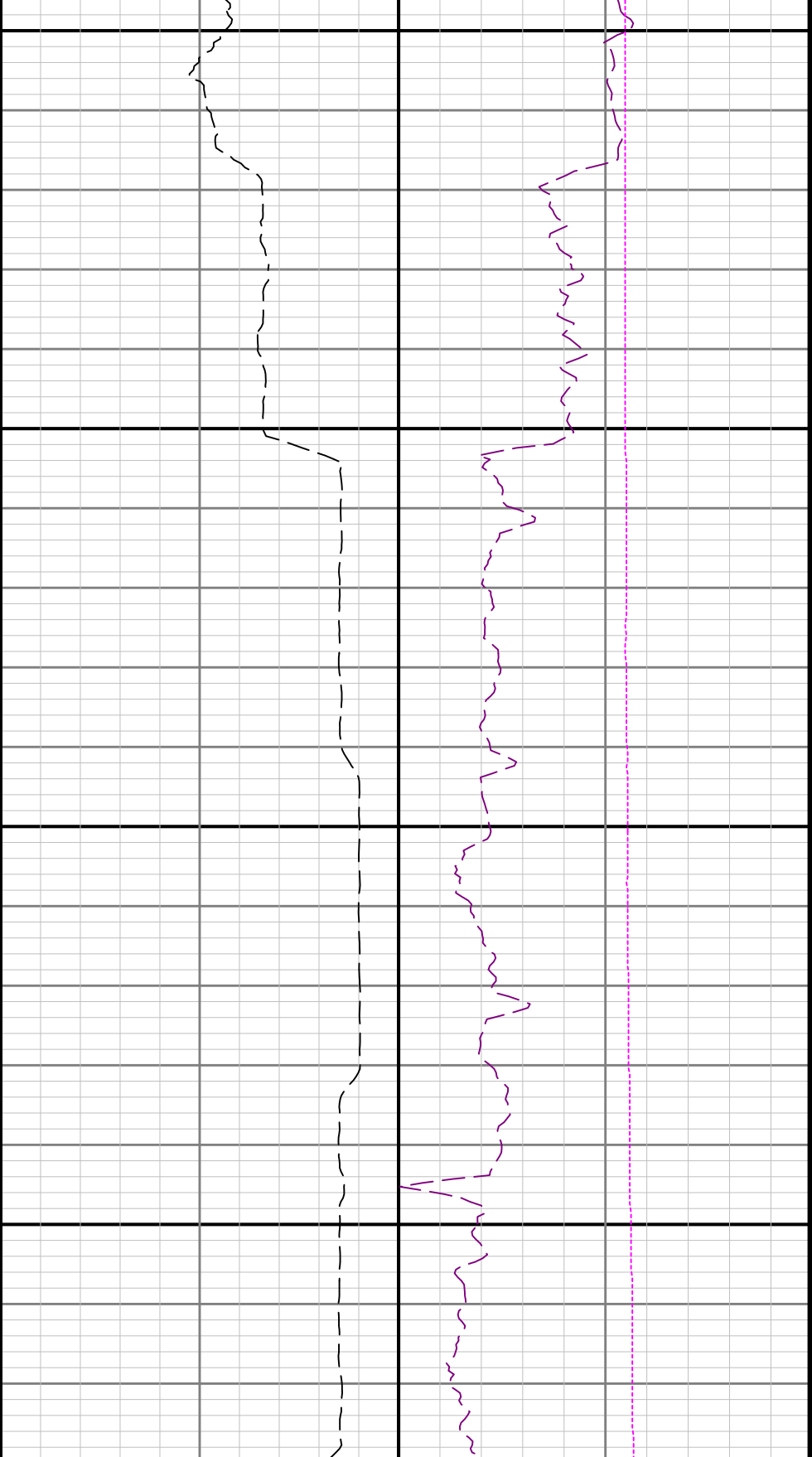
5400

5500





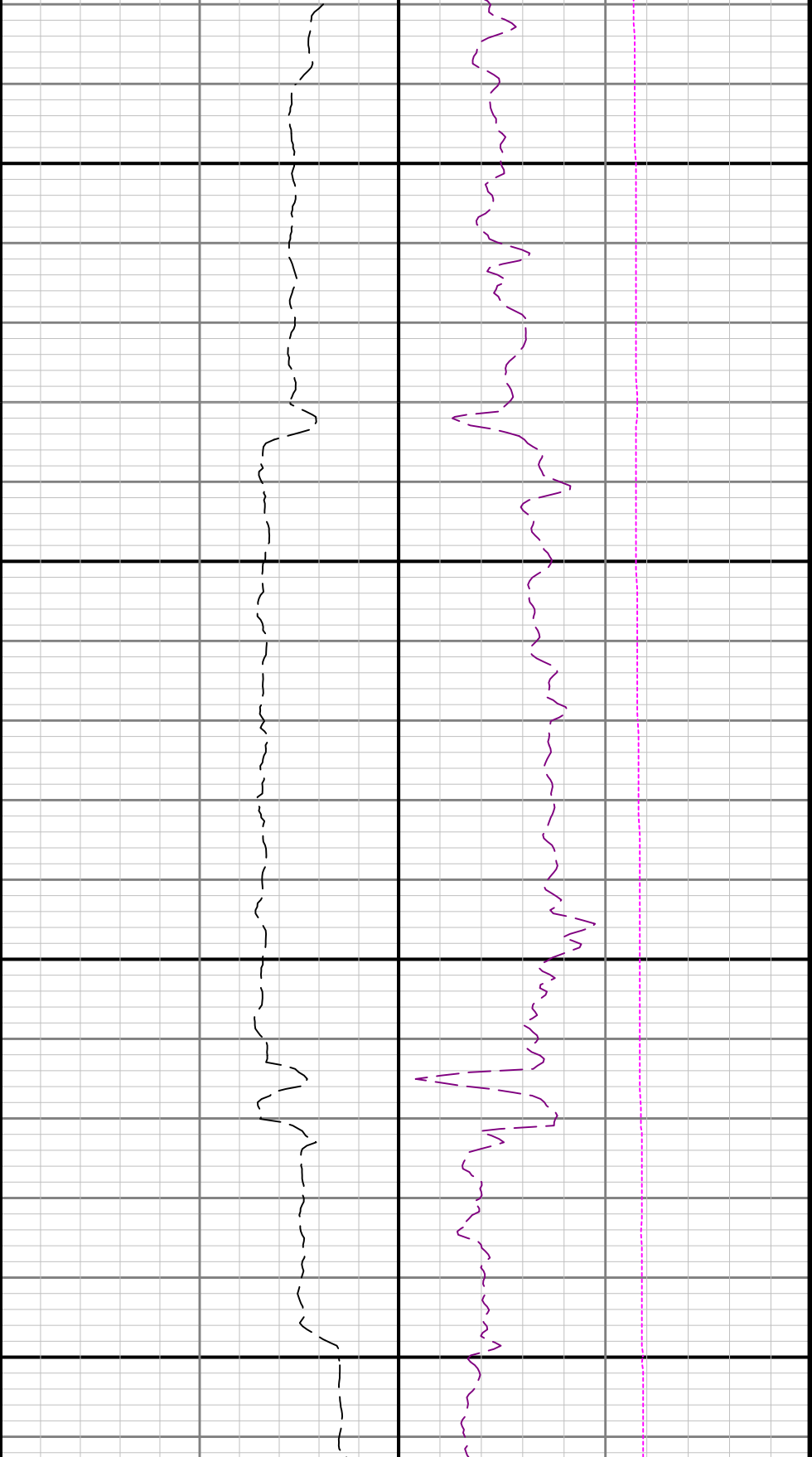




6100

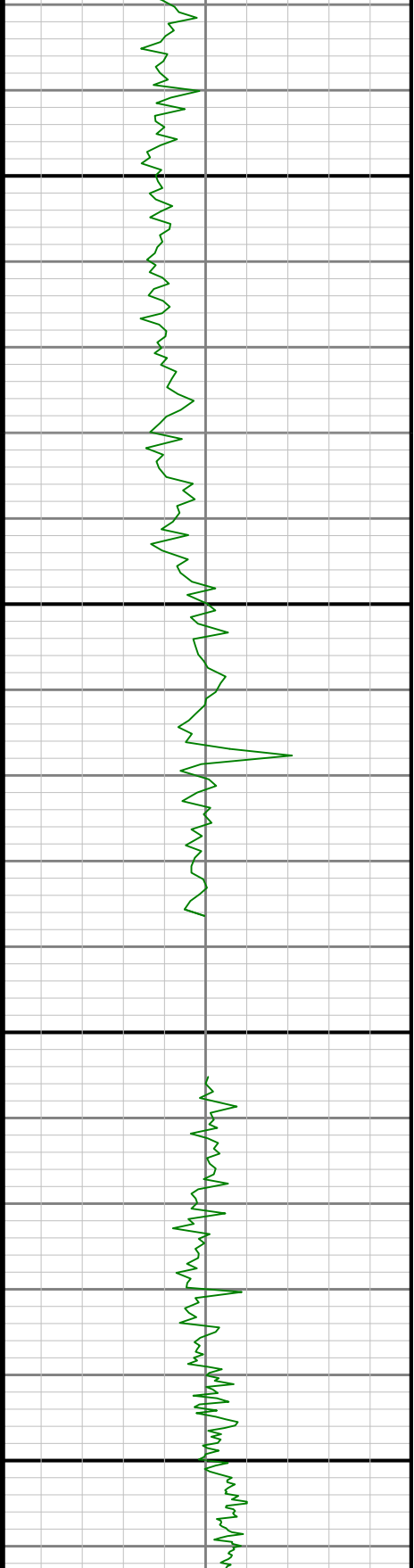
6200

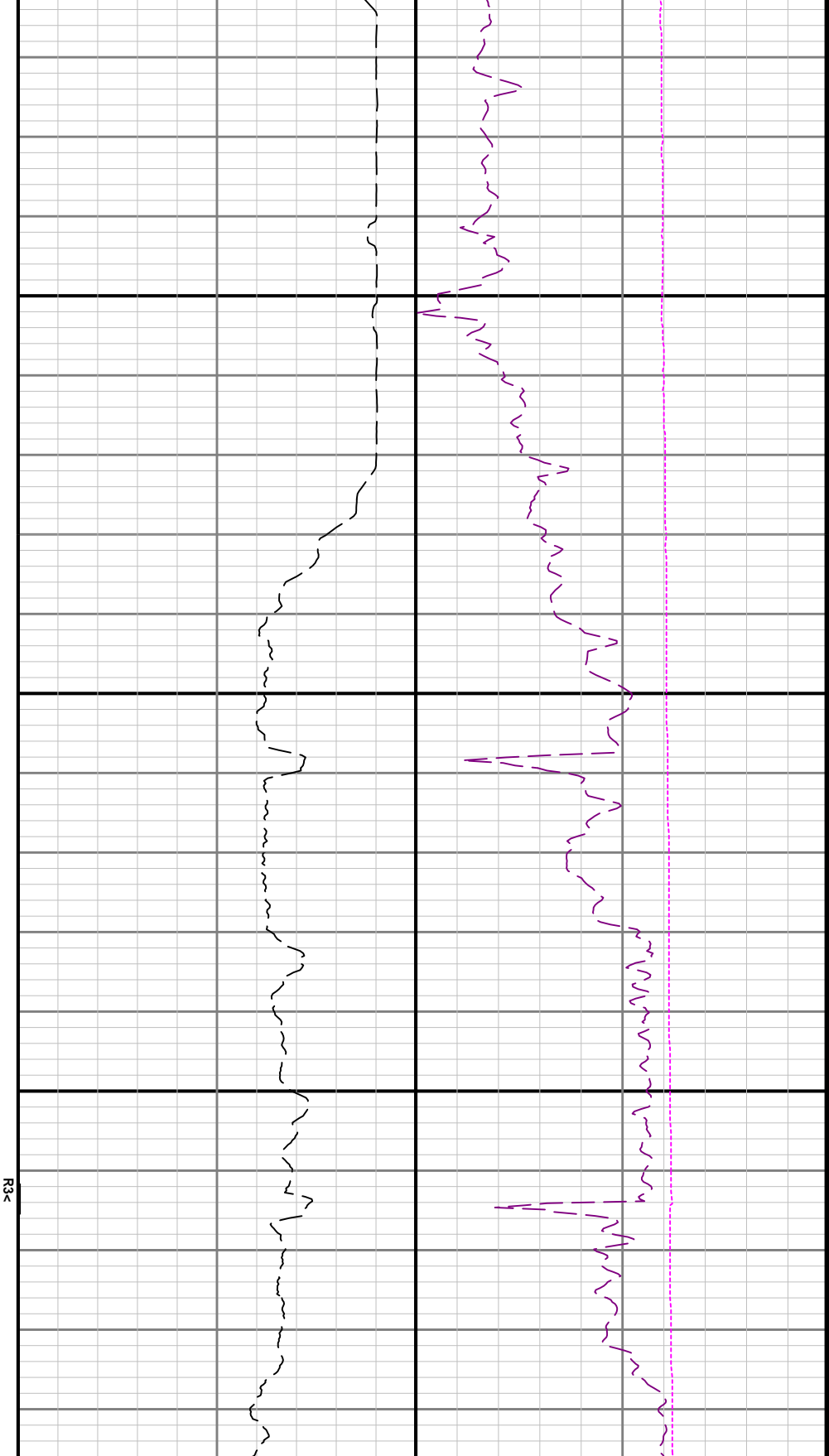




6300

6400

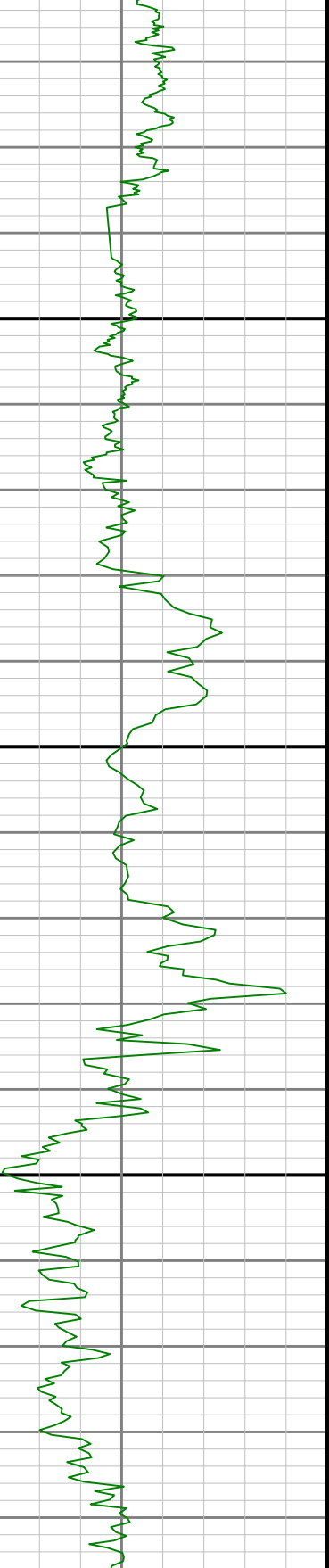


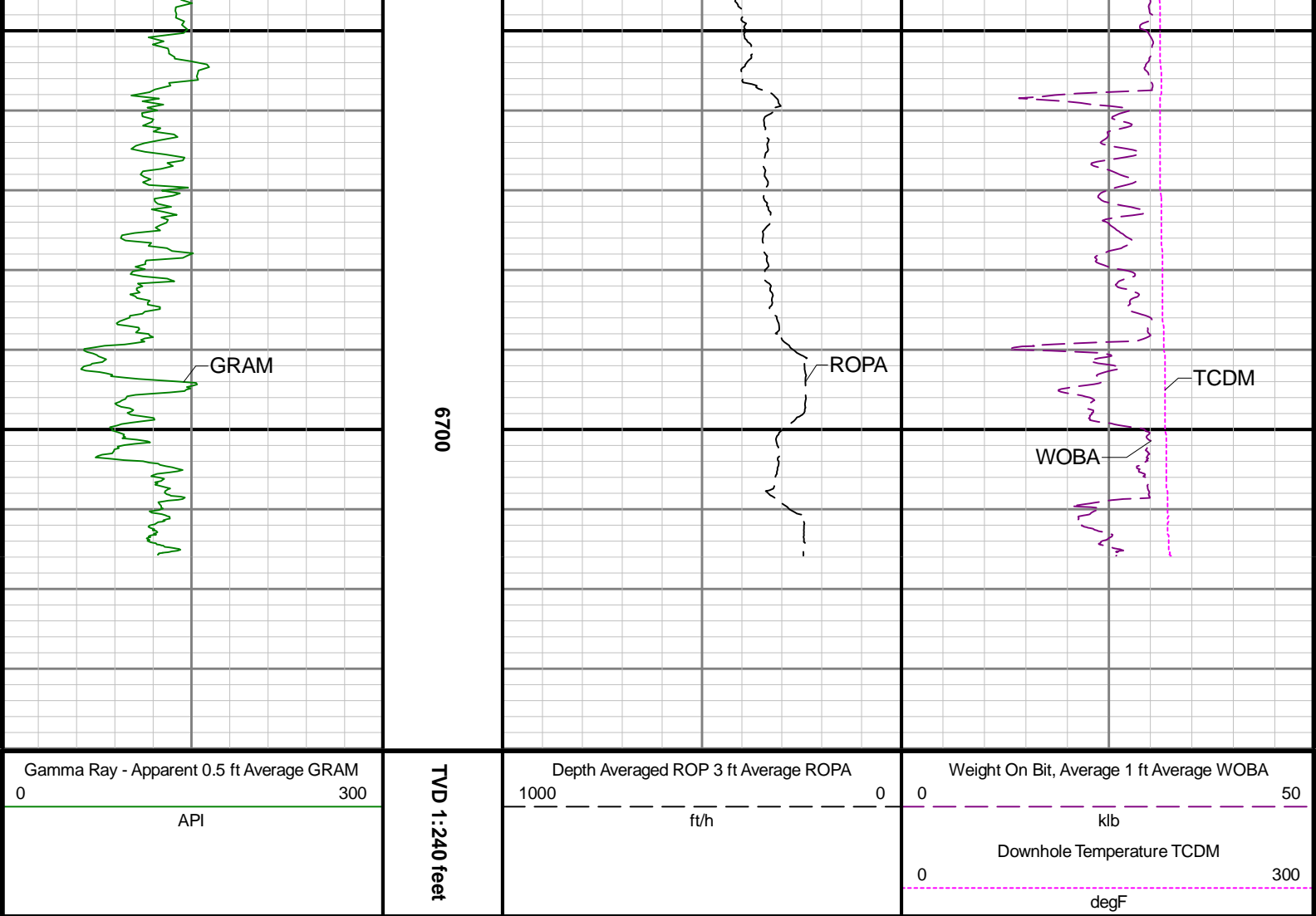


6500

6600

R3<





Directional Survey Summary

Latitude:	40° 11' 26.861" N	Longitude:	104° 28' 51.578" W
North Reference:	Grid	Drill Depth Zero:	Rig Floor
Vertical Datum is:	Mean Sea Level	Vertical Datum to DDZ: (ft)	4820.00
Vertical Section North: (ft)	0.00	Vertical Section East: (ft)	0.00
Vertical Section Azimuth: (deg)	181.65		
Grid Convergence: (deg)	-0.66	Magnetic Declination: (deg)	7.92
Total Correction: (deg)	7.26	TVD Calculation Method:	Minimum Curvature
Magnetic Correction:	Off	Local Magnetic Field: (nT)	52003
Local Magnetic Dip Angle: (deg)	66.57	Local Gravity Field: (m/s2)	9.800

Tie-In / Projection	Measured Depth (ft)	Inclination (deg)	Azimuth (deg)	Temperature (degF)	North (ft)	East (ft)	True Vertical Depth (ft)	TVD Subsea (ft)	Vertical Section (ft)	Course Length (ft)	Dog Leg Severity (deg/100ft)	Build Rate (deg/100ft)	Turn Rate (deg/100ft)
Tie-In	0.00	0.00	0.00	N/A	0.00	0.00	0.00	-4820.00	0.00	0.00	0.00	0.00	0.00
	80.00	0.36	158.57	N/A	-0.23	0.09	80.00	-4740.00	0.23	80.00	0.45	0.45	198.21
	173.00	0.56	111.32	N/A	-0.67	0.62	173.00	-4647.00	0.65	93.00	0.44	0.22	-50.81
	265.00	0.18	137.29	N/A	-0.94	1.14	264.99	-4555.01	0.91	92.00	0.44	-0.41	28.23
	360.00	0.56	128.92	N/A	-1.34	1.60	359.99	-4460.01	1.30	95.00	0.40	0.40	-8.81
	455.00	0.68	87.44	N/A	-1.61	2.53	454.99	-4365.01	1.54	95.00	0.48	0.13	-43.66
	550.00	0.36	67.42	N/A	-1.47	3.36	549.98	-4270.02	1.37	95.00	0.38	-0.34	-21.07
	645.00	0.49	97.72	N/A	-1.41	4.04	644.98	-4175.02	1.29	95.00	0.27	0.14	31.89

	739.00	0.69	106.65	N/A	-1.62	4.98	738.98	-4081.02	1.48	94.00	0.23	0.21	9.50
	834.00	0.37	97.76	N/A	-1.83	5.83	833.97	-3986.03	1.66	95.00	0.35	-0.34	-9.36
	929.00	0.45	136.72	N/A	-2.14	6.39	928.97	-3891.03	1.96	95.00	0.30	0.08	41.01
	1023.00	0.50	152.06	N/A	-2.77	6.84	1022.97	-3797.03	2.58	94.00	0.14	0.05	16.32
	1118.00	0.42	177.48	N/A	-3.49	7.05	1117.96	-3702.04	3.28	95.00	0.23	-0.08	26.76
	1213.00	0.45	171.94	N/A	-4.21	7.12	1212.96	-3607.04	4.00	95.00	0.05	0.03	-5.83
	1307.00	0.27	171.68	N/A	-4.79	7.20	1306.96	-3513.04	4.58	94.00	0.19	-0.19	-0.28
	1402.00	0.06	189.91	N/A	-5.06	7.22	1401.96	-3418.04	4.85	95.00	0.23	-0.22	19.19
	1497.00	0.07	229.51	N/A	-5.15	7.17	1496.96	-3323.04	4.94	95.00	0.05	0.01	41.68
	1591.00	0.09	194.55	N/A	-5.26	7.11	1590.96	-3229.04	5.05	94.00	0.06	0.02	-37.19
	1686.00	0.33	267.69	N/A	-5.34	6.82	1685.96	-3134.04	5.14	95.00	0.33	0.25	76.99
	1781.00	0.46	320.81	N/A	-5.05	6.30	1780.96	-3039.04	4.87	95.00	0.39	0.14	55.92
	1876.00	0.45	329.81	N/A	-4.44	5.87	1875.95	-2944.05	4.27	95.00	0.08	-0.01	9.47
	1923.00	0.47	345.43	N/A	-4.09	5.73	1922.95	-2897.05	3.92	47.00	0.27	0.04	33.23
	2085.00	0.51	279.65	117.6	-3.33	4.86	2084.95	-2735.05	3.19	162.00	0.33	0.02	-40.60
	2180.00	0.16	275.33	258.1	-3.24	4.31	2179.94	-2640.06	3.12	95.00	0.37	-0.37	-4.55
	2369.00	0.07	258.14	350.0	-3.24	3.93	2368.94	-2451.06	3.13	189.00	0.05	-0.05	-9.10
	2464.00	0.26	150.86	128.4	-3.44	3.98	2463.94	-2356.06	3.33	95.00	0.30	0.20	-112.93
	2559.00	0.26	107.67	131.1	-3.70	4.29	2558.94	-2261.06	3.57	95.00	0.20	-0.00	-45.46
	2653.00	0.55	131.18	131.1	-4.06	4.83	2652.94	-2167.06	3.92	94.00	0.35	0.31	25.01
	2748.00	0.49	131.45	131.1	-4.63	5.48	2747.94	-2072.06	4.47	95.00	0.06	-0.06	0.28
	2842.00	0.31	106.79	133.8	-4.97	6.02	2841.93	-1978.07	4.79	94.00	0.26	-0.19	-26.23
	2937.00	0.47	91.14	133.8	-5.05	6.66	2936.93	-1883.07	4.86	95.00	0.20	0.17	-16.47
	3032.00	0.24	59.28	133.8	-4.96	7.22	3031.93	-1788.07	4.75	95.00	0.31	-0.24	-33.54
	3127.00	0.48	56.90	136.5	-4.64	7.73	3126.93	-1693.07	4.41	95.00	0.25	0.25	-2.51
	3221.00	0.37	343.06	136.5	-4.13	7.97	3220.93	-1599.07	3.90	94.00	0.55	-0.12	-78.55
	3316.00	0.21	123.65	139.2	-3.93	8.02	3315.93	-1504.07	3.70	95.00	0.58	-0.17	147.99
	3411.00	0.48	162.54	139.2	-4.41	8.29	3410.92	-1409.08	4.17	95.00	0.36	0.28	40.94
	3506.00	0.59	178.95	139.2	-5.28	8.41	3505.92	-1314.08	5.03	95.00	0.20	0.12	17.27
	3600.00	0.10	115.73	141.9	-5.80	8.50	3599.92	-1220.08	5.55	94.00	0.59	-0.52	-67.26
	3695.00	0.11	145.54	141.9	-5.91	8.62	3694.92	-1125.08	5.66	95.00	0.06	0.01	31.38
	3789.00	0.09	148.44	144.6	-6.05	8.71	3788.92	-1031.08	5.79	94.00	0.02	-0.02	3.09
	3884.00	0.15	90.53	144.6	-6.11	8.88	3883.92	-936.08	5.85	95.00	0.13	0.06	-60.96
	3979.00	0.09	198.87	147.3	-6.18	8.98	3978.92	-841.08	5.92	95.00	0.21	-0.06	114.04
	4074.00	0.09	265.82	147.3	-6.26	8.88	4073.92	-746.08	6.00	95.00	0.10	0.00	70.47
	4169.00	0.00	7.29	150.0	-6.26	8.80	4168.92	-651.08	6.01	95.00	0.09	-0.09	106.81
	4263.00	0.09	101.74	150.0	-6.28	8.88	4262.92	-557.08	6.02	94.00	0.10	0.10	100.48
	4358.00	1.43	238.50	152.7	-6.91	7.94	4357.91	-462.09	6.68	95.00	1.58	1.41	143.96
	4452.00	4.18	237.40	152.7	-9.37	4.05	4451.79	-368.21	9.25	94.00	2.93	2.93	-1.17
	4547.00	6.73	238.24	155.4	-14.17	-3.60	4546.35	-273.65	14.27	95.00	2.69	2.68	0.88
	4642.00	8.22	236.75	158.1	-20.82	-14.01	4640.54	-179.46	21.22	95.00	1.58	1.57	-1.57
	4737.00	8.85	237.15	158.1	-28.51	-25.83	4734.49	-85.51	29.24	95.00	0.67	0.66	0.42
	4831.00	10.16	238.46	158.1	-36.77	-38.97	4827.19	7.19	37.88	94.00	1.41	1.39	1.39
	4926.00	12.35	236.70	160.8	-46.73	-54.61	4920.36	100.36	48.29	95.00	2.33	2.31	-1.85
	5020.00	11.83	237.12	160.8	-57.48	-71.10	5012.28	192.28	59.51	94.00	0.56	-0.55	0.45
	5115.00	10.41	237.69	163.5	-67.36	-86.53	5105.49	285.49	69.82	95.00	1.50	-1.49	0.60
	5210.00	11.85	238.52	163.5	-77.04	-102.11	5198.70	378.70	79.95	95.00	1.53	1.52	0.87
	5304.00	11.88	239.26	163.5	-87.02	-118.65	5290.69	470.69	90.40	94.00	0.16	0.03	0.79
	5399.00	11.66	241.34	166.2	-96.63	-135.48	5383.70	563.70	100.49	95.00	0.50	-0.23	2.19
	5494.00	11.74	242.09	166.2	-105.76	-152.45	5476.72	656.72	110.10	95.00	0.18	0.08	0.79
	5588.00	11.78	242.48	168.9	-114.67	-169.41	5568.75	748.75	119.50	94.00	0.09	0.04	0.41
	5683.00	11.64	242.63	168.9	-123.55	-186.52	5661.77	841.77	128.87	95.00	0.15	-0.15	0.16
	5778.00	10.89	242.15	171.6	-132.15	-202.96	5754.94	934.94	137.94	95.00	0.80	-0.79	-0.51
	5873.00	11.95	241.45	168.9	-141.04	-219.54	5848.06	1028.06	147.31	95.00	1.13	1.12	-0.74
	5974.00	12.13	241.13	158.1	-151.16	-238.02	5946.84	1126.84	157.95	101.00	0.19	0.18	-0.32
	6069.00	11.65	240.38	163.5	-160.72	-255.09	6039.80	1219.80	168.00	95.00	0.53	-0.51	-0.79
	6163.00	11.65	240.26	163.5	-170.12	-271.59	6131.86	1311.86	177.87	94.00	0.03	-0.00	-0.13
	6258.00	16.13	204.05	166.2	-186.97	-285.32	6224.23	1404.23	195.11	95.00	10.06	4.72	-38.12
	6352.00	24.94	194.02	174.3	-218.19	-295.47	6312.19	1492.19	226.61	94.00	10.06	9.37	-10.67
	6447.00	31.28	199.57	171.6	-260.92	-308.60	6395.96	1575.96	269.69	95.00	7.21	6.67	5.84
	6542.00	37.57	199.25	179.7	-311.55	-326.43	6474.28	1654.28	320.82	95.00	6.62	6.62	-0.34

	6637.00	48.36	195.58	179.7	-373.28	-345.57	6543.71	1723.71	383.07	95.00	11.66	11.36	-3.86
	6731.00	55.40	195.56	185.2	-444.47	-365.41	6601.70	1781.70	454.81	94.00	7.49	7.49	-0.02
	6826.00	64.99	193.88	185.2	-524.12	-386.27	6648.87	1828.87	535.02	95.00	10.21	10.09	-1.77
	6921.00	72.62	189.34	187.9	-610.80	-403.99	6683.20	1863.20	622.18	95.00	9.18	8.03	-4.78
	7015.00	80.16	185.72	193.3	-701.30	-415.90	6705.31	1885.31	712.98	94.00	8.85	8.02	-3.85
	7110.00	88.03	182.98	193.3	-795.44	-423.05	6715.08	1895.08	807.29	95.00	8.77	8.28	-2.88
	7205.00	92.19	175.30	196.0	-890.34	-421.62	6714.90	1894.90	902.11	95.00	9.19	4.38	-8.08
	7300.00	89.51	177.27	198.7	-985.11	-415.47	6713.49	1893.49	996.67	95.00	3.50	-2.82	2.07
	7394.00	90.89	174.72	198.7	-1078.87	-408.91	6713.16	1893.16	1090.20	94.00	3.08	1.47	-2.71
	7489.00	89.45	177.30	198.7	-1173.63	-402.30	6712.88	1892.88	1184.73	95.00	3.11	-1.52	2.72
	7584.00	89.23	177.23	201.4	-1268.52	-397.76	6713.97	1893.97	1279.45	95.00	0.24	-0.23	-0.07
	7678.00	91.11	174.80	204.1	-1362.28	-391.23	6713.70	1893.70	1372.98	94.00	3.27	2.00	-2.59
	7773.00	88.77	178.27	206.8	-1457.09	-385.49	6713.80	1893.80	1467.58	95.00	4.41	-2.46	3.65
	7868.00	89.66	179.67	206.8	-1552.06	-383.78	6715.10	1895.10	1562.46	95.00	1.75	0.94	1.47
	7963.00	90.15	180.29	209.5	-1647.06	-383.75	6715.25	1895.25	1657.42	95.00	0.83	0.52	0.65
	8057.00	90.43	180.26	212.2	-1741.05	-384.20	6714.78	1894.78	1751.40	94.00	0.30	0.30	-0.03
	8152.00	90.43	180.29	212.2	-1836.05	-384.66	6714.07	1894.07	1846.37	95.00	0.03	-0.00	0.03
	8247.00	90.49	180.07	214.9	-1931.05	-384.96	6713.30	1893.30	1941.33	95.00	0.24	0.06	-0.23
	8342.00	91.08	179.58	214.9	-2026.04	-384.67	6712.00	1892.00	2036.27	95.00	0.81	0.62	-0.52
	8436.00	91.23	176.33	214.9	-2119.95	-381.31	6710.11	1890.11	2130.05	94.00	3.46	0.16	-3.46
	8531.00	89.51	180.48	217.6	-2214.88	-378.67	6709.49	1889.49	2224.87	95.00	4.73	-1.81	4.37
	8626.00	90.25	179.61	217.6	-2309.88	-378.75	6709.69	1889.69	2319.83	95.00	1.20	0.78	-0.92
	8721.00	90.18	179.87	217.6	-2404.88	-378.31	6709.33	1889.33	2414.77	95.00	0.28	-0.07	0.27
	8816.00	89.63	179.46	220.3	-2499.88	-377.76	6709.49	1889.49	2509.72	95.00	0.72	-0.58	-0.43
	8910.00	90.68	179.31	220.3	-2593.87	-376.75	6709.24	1889.24	2603.64	94.00	1.13	1.12	-0.16
	9005.00	90.06	178.96	223.0	-2688.86	-375.32	6708.62	1888.62	2698.55	95.00	0.75	-0.65	-0.37
	9100.00	89.88	178.78	223.0	-2783.84	-373.44	6708.67	1888.67	2793.44	95.00	0.27	-0.19	-0.19
	9194.00	90.31	178.90	223.0	-2877.82	-371.54	6708.52	1888.52	2887.32	94.00	0.47	0.46	0.13
	9289.00	89.45	179.75	225.7	-2972.81	-370.42	6708.72	1888.72	2982.24	95.00	1.27	-0.91	0.89
	9384.00	89.97	179.51	228.4	-3067.81	-369.81	6709.20	1889.20	3077.18	95.00	0.60	0.55	-0.25
	9478.00	90.09	180.53	228.4	-3161.80	-369.84	6709.15	1889.15	3171.14	94.00	1.09	0.13	1.09
	9573.00	92.12	178.78	228.4	-3256.78	-369.27	6707.32	1887.32	3266.06	95.00	2.82	2.14	-1.84
	9667.00	91.51	175.88	231.1	-3350.62	-364.89	6704.34	1884.34	3359.73	94.00	3.15	-0.65	-3.09
	9762.00	90.34	173.50	233.8	-3445.19	-356.10	6702.81	1882.81	3454.01	95.00	2.79	-1.23	-2.51
	9856.00	89.91	177.66	231.1	-3538.89	-348.86	6702.60	1882.60	3547.47	94.00	4.45	-0.46	4.43
	9951.00	89.78	180.27	233.8	-3633.86	-347.14	6702.86	1882.86	3642.35	95.00	2.75	-0.14	2.75
	10046.00	90.68	178.34	233.8	-3728.85	-345.99	6702.48	1882.48	3737.27	95.00	2.24	0.95	-2.03
	10140.00	89.51	178.25	236.5	-3822.81	-343.19	6702.32	1882.32	3831.10	94.00	1.25	-1.24	-0.10
	10235.00	92.06	180.05	236.5	-3917.78	-341.78	6701.02	1881.02	3925.99	95.00	3.29	2.68	1.89
	10329.00	90.65	181.95	236.5	-4011.73	-343.42	6698.80	1878.80	4019.95	94.00	2.52	-1.50	2.02
	10519.00	91.11	180.03	236.5	-4201.67	-346.71	6695.88	1875.88	4209.91	190.00	1.04	0.24	-1.01
	10614.00	89.66	176.99	239.2	-4296.62	-344.24	6695.24	1875.24	4304.75	95.00	3.55	-1.53	-3.20
	10708.00	89.54	179.94	239.2	-4390.57	-341.72	6695.90	1875.90	4398.59	94.00	3.14	-0.13	3.14
	10803.00	90.52	181.39	241.9	-4485.56	-342.82	6695.85	1875.85	4493.58	95.00	1.84	1.03	1.53
	10898.00	90.25	175.33	241.9	-4580.48	-340.10	6695.21	1875.21	4588.37	95.00	6.39	-0.28	-6.38
	10992.00	89.32	178.41	241.9	-4674.33	-334.97	6695.56	1875.56	4682.03	94.00	3.42	-0.99	3.28
	11087.00	91.39	180.69	241.9	-4769.31	-334.23	6694.97	1874.97	4776.96	95.00	3.24	2.18	2.40
	11182.00	90.03	178.34	244.6	-4864.29	-333.42	6693.79	1873.79	4871.87	95.00	2.86	-1.43	-2.47
	11276.00	89.78	180.45	247.3	-4958.28	-332.43	6693.95	1873.95	4965.79	94.00	2.26	-0.27	2.24
	11371.00	91.60	181.20	247.3	-5053.26	-333.80	6692.81	1872.81	5060.77	95.00	2.07	1.92	0.79
	11466.00	91.20	178.27	231.1	-5148.22	-333.36	6690.48	1870.48	5155.68	95.00	3.11	-0.42	-3.08
	11560.00	89.42	177.97	236.5	-5242.16	-330.27	6689.97	1869.97	5249.50	94.00	1.92	-1.89	-0.32
	11655.00	89.38	180.32	236.5	-5337.14	-328.86	6690.97	1870.97	5344.40	95.00	2.47	-0.04	2.47
	11749.00	89.26	178.91	241.9	-5431.13	-328.23	6692.09	1872.09	5438.33	94.00	1.51	-0.13	-1.50
	11844.00	89.75	181.19	241.9	-5526.12	-328.31	6692.91	1872.91	5533.28	95.00	2.45	0.52	2.40
	11939.00	89.38	181.32	244.6	-5621.09	-330.39	6693.63	1873.63	5628.27	95.00	0.41	-0.39	0.14
	12033.00	90.80	180.62	244.6	-5715.08	-331.98	6693.48	1873.48	5722.26	94.00	1.68	1.51	-0.74
	12128.00	88.68	181.46	244.6	-5810.05	-333.70	6693.91	1873.91	5817.25	95.00	2.40	-2.23	0.88
	12222.00	91.45	183.50	247.3	-5903.95	-337.77	6693.80	1873.80	5911.23	94.00	3.66	2.95	2.17
	12317.00	90.62	179.72	250.0	-5998.88	-340.44	6692.09	1872.09	6006.19	95.00	4.07	-0.87	-3.98
	12412.00	90.03	183.58	250.0	-6093.82	-343.17	6691.55	1871.55	6101.17	95.00	4.11	-0.62	4.06

	12507.00	90.58	181.32	250.0	-6188.73	-347.23	6691.04	1871.04	6196.16	95.00	2.45	0.58	-2.38
	12601.00	90.68	181.99	250.0	-6282.68	-349.95	6690.01	1870.01	6290.15	94.00	0.72	0.11	0.71
	12696.00	89.66	182.90	252.7	-6377.59	-354.00	6689.73	1869.73	6385.14	95.00	1.44	-1.07	0.96
	12791.00	90.34	180.32	252.7	-6472.54	-356.67	6689.73	1869.73	6480.13	95.00	2.81	0.72	-2.72
	12885.00	90.06	180.35	252.7	-6566.54	-357.22	6689.40	1869.40	6574.11	94.00	0.30	-0.30	0.03
	12980.00	89.91	179.00	252.7	-6661.54	-356.68	6689.42	1869.42	6669.05	95.00	1.43	-0.16	-1.42
	13075.00	90.46	178.76	255.4	-6756.52	-354.82	6689.12	1869.12	6763.93	95.00	0.63	0.58	-0.25
	13170.00	90.18	180.58	255.4	-6851.51	-354.28	6688.59	1868.59	6858.87	95.00	1.94	-0.29	1.92
	13264.00	89.78	179.87	255.4	-6945.51	-354.65	6688.62	1868.62	6952.84	94.00	0.87	-0.43	-0.76
	13359.00	91.48	180.17	255.4	-7040.50	-354.68	6687.58	1867.58	7047.79	95.00	1.82	1.79	0.32
	13453.00	90.09	178.08	258.1	-7134.47	-353.24	6686.29	1866.29	7141.69	94.00	2.67	-1.48	-2.22
	13548.00	91.26	180.05	258.1	-7229.45	-351.69	6685.17	1865.17	7236.58	95.00	2.41	1.23	2.07
	13642.00	90.46	179.27	258.1	-7323.43	-351.14	6683.76	1863.76	7330.51	94.00	1.19	-0.85	-0.83
	13737.00	92.28	179.94	258.1	-7418.40	-350.48	6681.49	1861.49	7425.42	95.00	2.04	1.92	0.71
	13832.00	91.54	180.70	258.1	-7513.35	-351.01	6678.32	1858.32	7520.34	95.00	1.12	-0.78	0.80
	13926.00	91.42	178.13	260.8	-7607.30	-350.05	6675.89	1855.89	7614.23	94.00	2.74	-0.13	-2.73
	14021.00	90.58	179.40	260.8	-7702.26	-348.01	6674.23	1854.23	7709.09	95.00	1.60	-0.88	1.34
	14115.00	91.60	178.50	263.5	-7796.23	-346.28	6672.45	1852.45	7802.97	94.00	1.45	1.09	-0.96
	14210.00	91.02	180.98	263.5	-7891.19	-345.85	6670.27	1850.27	7897.88	95.00	2.68	-0.61	2.61
	14304.00	91.14	178.09	266.2	-7985.16	-345.09	6668.50	1848.50	7991.79	94.00	3.08	0.13	-3.07
	14399.00	91.45	179.18	266.2	-8080.11	-342.83	6666.35	1846.35	8086.63	95.00	1.19	0.33	1.15
	14493.00	91.11	178.23	266.2	-8174.06	-340.70	6664.25	1844.25	8180.48	94.00	1.07	-0.36	-1.01
	14587.00	90.28	177.71	269.0	-8267.99	-337.37	6663.11	1843.11	8274.28	94.00	1.04	-0.88	-0.55
	14682.00	91.69	179.08	269.0	-8362.94	-334.71	6661.48	1841.48	8369.11	95.00	2.07	1.48	1.44
	14777.00	90.95	178.18	269.0	-8457.88	-332.44	6659.29	1839.29	8463.95	95.00	1.23	-0.78	-0.95
	14871.00	91.20	177.80	269.0	-8551.81	-329.15	6657.53	1837.53	8557.74	94.00	0.48	0.27	-0.40
	14966.00	91.32	179.12	269.0	-8646.75	-326.59	6655.44	1835.44	8652.57	95.00	1.39	0.13	1.39
	15061.00	90.65	177.34	269.0	-8741.69	-323.66	6653.81	1833.81	8747.38	95.00	2.00	-0.71	-1.87
	15156.00	91.75	178.29	269.0	-8836.59	-320.04	6651.82	1831.82	8842.15	95.00	1.53	1.16	1.00
	15250.00	90.55	179.36	271.7	-8930.55	-318.11	6649.93	1829.93	8936.01	94.00	1.71	-1.28	1.14
	15345.00	90.80	179.89	269.0	-9025.54	-317.49	6648.81	1828.81	9030.94	95.00	0.62	0.26	0.56
	15439.00	90.92	179.69	271.7	-9119.53	-317.15	6647.40	1827.40	9124.88	94.00	0.25	0.13	-0.21
	15534.00	91.32	179.32	271.7	-9214.51	-316.32	6645.54	1825.54	9219.80	95.00	0.57	0.42	-0.39
	15629.00	91.35	179.45	271.7	-9309.48	-315.31	6643.33	1823.33	9314.70	95.00	0.14	0.03	0.14
	15724.00	90.58	178.81	271.7	-9404.45	-313.86	6641.73	1821.73	9409.59	95.00	1.05	-0.81	-0.67
	15819.00	91.20	177.31	271.7	-9499.38	-310.65	6640.25	1820.25	9504.39	95.00	1.71	0.65	-1.58
	15913.00	91.54	178.72	274.4	-9593.30	-307.39	6638.01	1818.01	9598.17	94.00	1.54	0.36	1.50
	16008.00	90.65	179.10	274.4	-9688.26	-305.59	6636.19	1816.19	9693.05	95.00	1.02	-0.94	0.40
	16103.00	90.03	180.78	274.4	-9783.26	-305.49	6635.63	1815.63	9788.00	95.00	1.88	-0.65	1.77
	16198.00	91.08	179.13	274.4	-9878.25	-305.41	6634.71	1814.71	9882.95	95.00	2.06	1.11	-1.74
	16292.00	91.29	179.41	274.4	-9972.22	-304.21	6632.76	1812.76	9976.85	94.00	0.37	0.22	0.30
	16387.00	91.35	180.50	271.7	-10067.19	-304.14	6630.57	1810.57	10071.78	95.00	1.15	0.06	1.15
	16482.00	90.86	180.40	271.7	-10162.17	-304.89	6628.74	1808.74	10166.74	95.00	0.53	-0.52	-0.11
	16576.00	91.35	180.22	274.4	-10256.15	-305.39	6626.93	1806.93	10260.69	94.00	0.56	0.52	-0.19
	16671.00	90.80	179.61	274.4	-10351.14	-305.25	6625.15	1805.15	10355.63	95.00	0.86	-0.58	-0.64
	16765.00	91.94	179.43	274.4	-10445.10	-304.47	6622.90	1802.90	10449.54	94.00	1.23	1.21	-0.19
	16860.00	90.15	180.07	274.4	-10540.08	-304.05	6621.17	1801.17	10544.47	95.00	2.00	-1.88	0.67
	16955.00	90.77	179.36	274.4	-10635.08	-303.58	6620.40	1800.40	10639.41	95.00	0.99	0.65	-0.75
	17049.00	90.95	180.19	277.1	-10729.07	-303.21	6618.99	1798.99	10733.35	94.00	0.90	0.19	0.88
	17144.00	90.89	179.69	277.1	-10824.05	-303.11	6617.47	1797.47	10828.29	95.00	0.53	-0.06	-0.53
	17239.00	91.63	180.82	277.1	-10919.03	-303.53	6615.38	1795.38	10923.24	95.00	1.42	0.78	1.19
Projection	17290.00	91.63	180.82	N/A	-10970.00	-304.26	6613.93	1793.93	10974.21	51.00	0.00	-0.00	-0.00