

RMWS

ROCKY MOUNTAIN WIRELINE SERVICE

CEMENT BOND LOG

CCL/GR

Company

SNOW CONSULTING

Well

DEBEQUE #1

Field

DEBEQUE

County

MESA

State

CO.

Location:

AP# : 05-07-05147-00

PERFORATIONS

LAT: 39.340361 & LON: -108.226000

SEC

21

TWP

8S

RGE

97W

Elevation

G.L.

8S

97W

N/A

Permanent Datum

Log Measured From

G.L.

Drilling Measured From

Ft Above PD

N/A

Elevation

D.F.

G.L.

Run Number

ONE

Depth Driller

N/A

Present Depth Driller

300'

Depth Logger

300'

Bottom Logged Interval

300'

Top Log Interval

SURFACE

Fluid Level

FULL

Type Fluid

WATER

Max. Recorded Temp.

N/A

Estimated Cement Top

N/A

Equipment Number

208

Location

GRAND JUNCTION

Recorded By

K. FAVORITE

Witnessed By

P. EDWARDS

Run Number

Bit

From

To

Size

Weight

From

To

4.3"

11.6#

SURFACE

1068'

10.3/4"

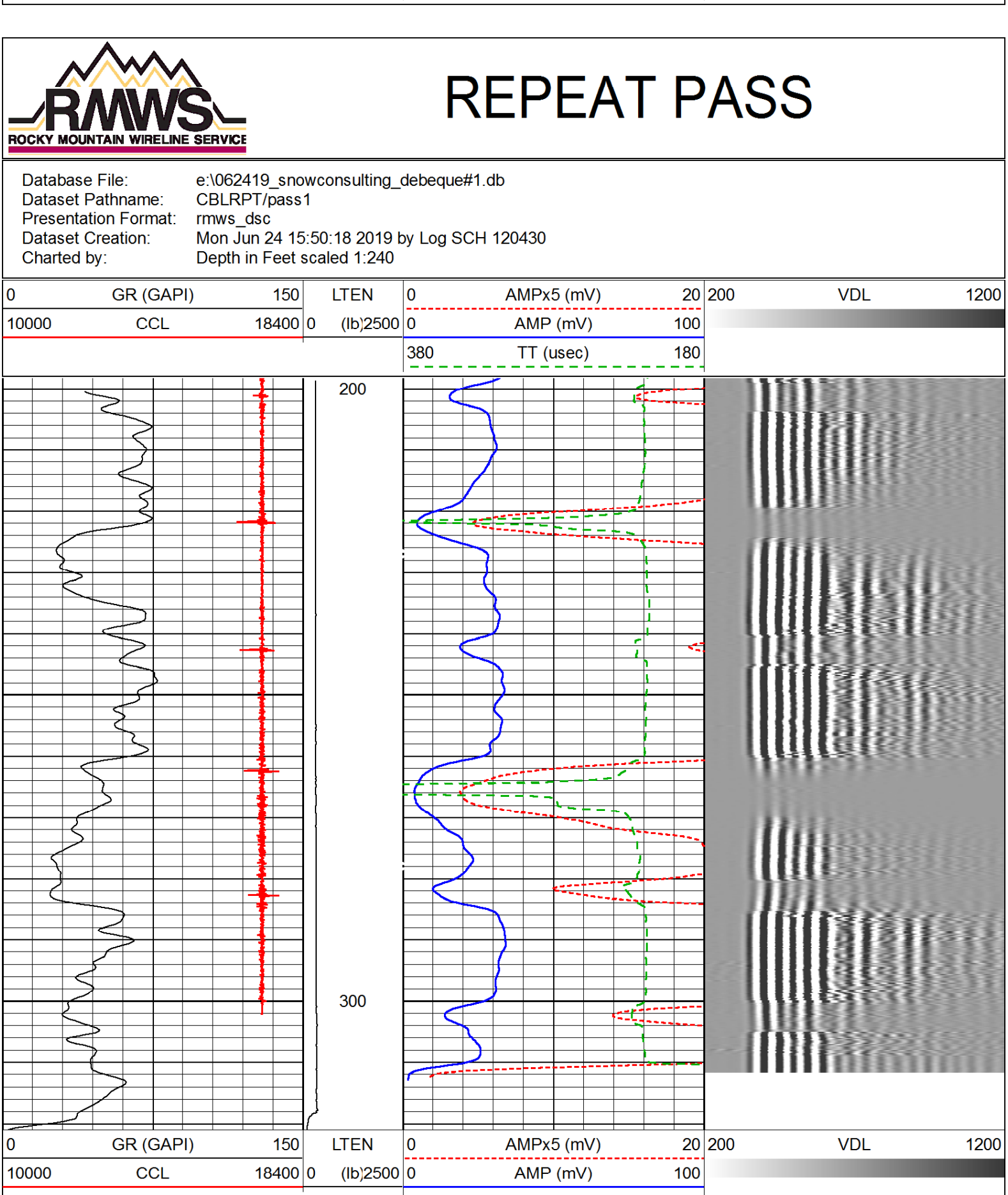
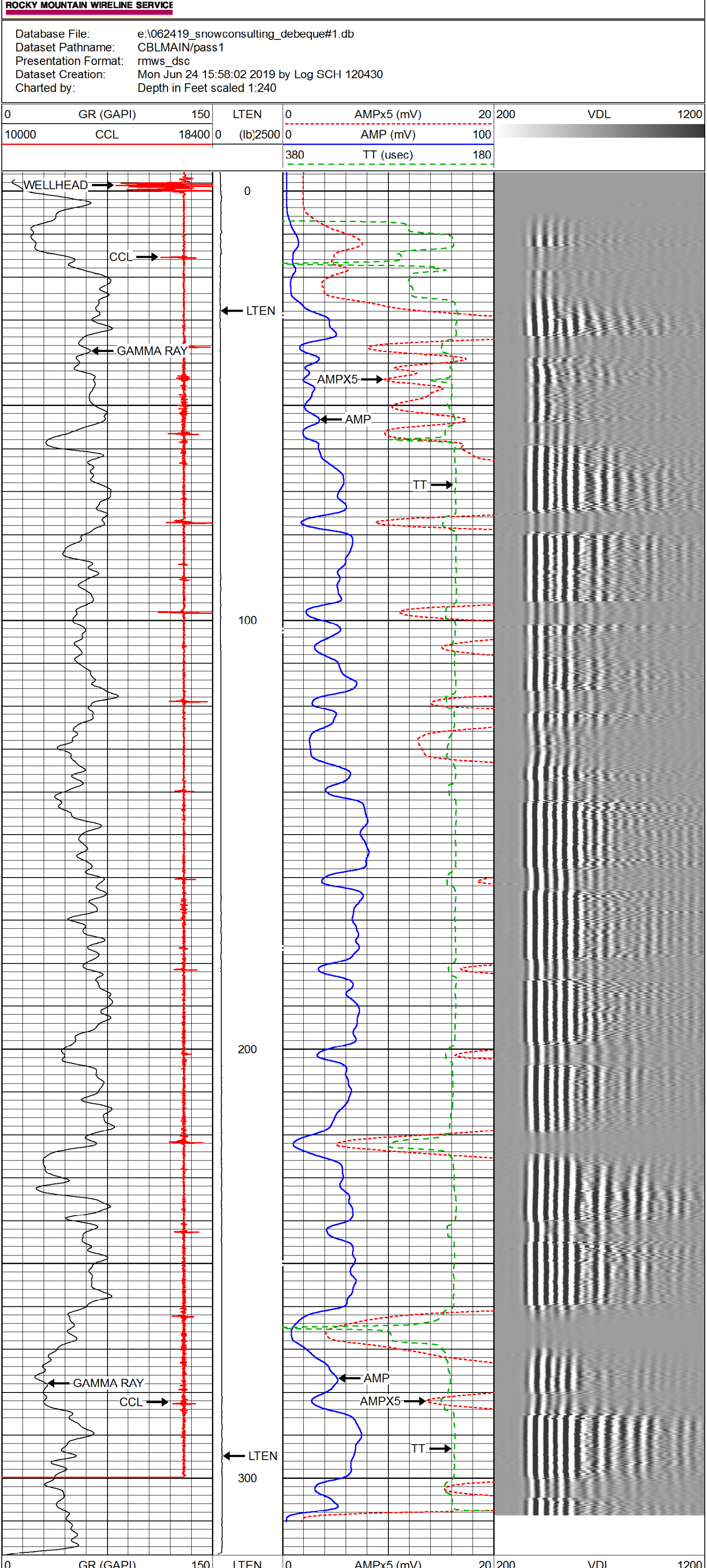
TBD

<<< Fold Here >>>

All interpretations are opinions based on inferences from electrical or other measurements and we cannot and do not guarantee the accuracy or correctness of any interpretation, and we shall not, except in the case of gross or willful negligence on our part, be liable or responsible for any loss, costs, damages, or expenses incurred or sustained by anyone resulting from any interpretation made by any of our officers, agents or employees. These interpretations are also subject to our general terms and conditions set out in our current Price Schedule.

WARRIOR 7.0 SOFTWARE - Comments

MAIN SCALE 5" = 100'  
CASING PSI = STATIC



Database File: e:\062419\_snowconsulting\_debeque#1.db

Dataset Pathname: CBLMAIN/pass1

Dataset Creation: Mon Jun 24 15:58:02 2019 by Log SCH 120430

Segmented Cement Bond Log Calibration Report

Serial Number: 10009897

Tool Model: 004

Calibration Casing Diameter: 4.500 in

Calibration Depth: 8751.306 ft

Master Calibration, performed Tue Jun 04 09:58:55 2019:

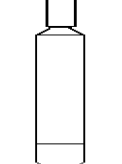
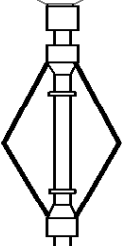
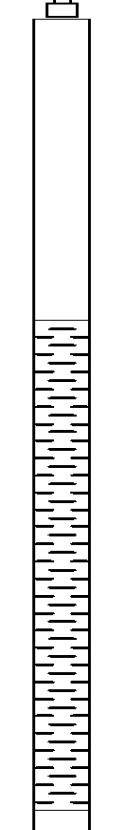












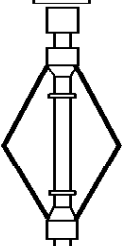


	Raw (v)		Calibrated (mv)		Results	
	Zero	Cal	Zero	Cal	Gain	Offset
3FT	0.000	0.908	2.000	81.196	62.992	1.995
5FT	0.000	0.296	2.000	81.196	214.578	2.125
S1	0.000	0.964	0.000	100.000	103.772	-0.009
S2	0.000	0.908	0.000	100.000	110.201	-0.010
S3	0.000	0.837	0.000	100.000	119.481	-0.011
S4	0.000	0.828	0.000	100.000	120.816	-0.011
S5	0.000	0.847	0.000	100.000	118.042	-0.011
S6	0.000	0.904	0.000	100.000	110.610	-0.010
S7	0.000	0.999	0.000	100.000	100.140	-0.009
S8	0.000	1.023	0.000	100.000	97.764	-0.009

Log Variables

Database: e:\062419\_snowconsulting\_debeque#1.db

Dataset: field/well/CBLMAIN/pass1

Top - Bottom							
PPT usec 0	CASEWGHT lb/ft 11.6	MAXAMPL mV 0	MINAMPL mV 1	MINATFN db/ft 0.8	CASEID in 4	CASEOD in 4.5	PERFS  0
TDEPTH ft 0	BOTTEMP degF 100	BOREID in 7.875					

CCL	18.13		CCL-028 (10007913) CCL UW 3 1/8" SONDEX	1.61	3.13	36.00
			PRC-022 (215770) ( 6 ARM 2 3/8" ROLLER CENTRALIZER SONDEX )	3.00	2.38	21.40
			RBT-004 (10009897) Radial Bond Tool (UW 3 1/8)	9.47	3.13	140.00
WVF3FT	10.28					
WVFS1	10.28					
WVFS2	10.28					
WVFS3	10.28					
WVFS4	10.28					
WVFS5	10.28					
WVFS6	10.28					
WVFS7	10.28					
WVFS8	10.28					
CBLTEMP	10.28					
CBLROT	10.28					
WVF5FT	9.28					
			PRC-022 (10007457) ( 6 ARM 2 3/8" ROLLER CENTRALIZER SONDEX )	3.00	2.38	21.40
GR	0.72		PGR-020 (10009364) Production Gamma Ray	1.93	1.69	9.50
TSTAMP	0.00		BUL-006 (10005985) Bullnose Terminator	0.22	1.69	1.20
ITEMPX	0.00					
HVOLT	0.00					
Dataset: 062419_snowconsulting_debeque#1.db: field/well/CBLMAIN/pass1						

RMWS

ROCKY MOUNTAIN WIRELINE SERVICE

Company

SNOW CONSULTING

Well

DEBEQUE #1

Field

DEBEQUE

County

MESA

State

CO.