

HALLIBURTON

iCem[®] Service

EXTRACTION OIL & GAS-EBUS

Rinn Valley West 18N-20-14N

Surface Casing

Job Date: Saturday, June 06, 2020

Sincerely,

Nathaniel Moore

Legal Notice

Disclaimer:

All information in this report is provided subject to the terms and conditions which govern the services provided by Halliburton. Halliburton personnel use their best efforts in gathering information and their best judgment in interpreting it, but any interpretation, research, analysis or recommendation furnished by Halliburton are opinions based upon inferences from measurements and empirical relationships and assumptions, which inferences and empirical relationships and assumptions are not infallible, and with respect to which professionals in the industry may differ. iCem 3D Displacement results are used to understand how fluids intermix during a cement job. Simulation and 3D displacement results are not intended as and should not be used as a replacement for bond logs in determining top of cement. Current 3D model calculations are known to model more volume than the input volume for standard cases due to known calculation improvements required. For rotational cases, the modeled volume will be impacted by the same calculations impacting the standard cases, as well as additional constraints imposed to make the calculation time required operationally feasible. Therefore, until further notice, 3D displacement results should not be used for replacement of a bond log, or used as an identifier of top of cement. HALLIBURTON IS UNABLE TO GUARANTEE THE ACCURACY OF ANY CHART INTERPRETATION, RESEARCH ANALYSIS, OR JOB RECOMMENDATION and any interpretation or recommendation is not for use of or reliance upon by any third party. The customer has full responsibility for any of its decisions which are based on the information provided in this report.

Table of Contents

1.0 Cementing Job Summary 4

 1.1 Executive Summary4

2.0 Real-Time Job Summary 7

 2.1 Job Event Log7

3.0 Attachments..... 9

 3.1 Job Chart.....9

 3.2 Recorded Data10

1.0 Cementing Job Summary

1.1 Executive Summary

Halliburton appreciates the opportunity to perform the cementing services on the Rinn Valley West 18N-25-14N surface casing. A pre-job safety meeting was held before the job where details of the job were discussed, potential safety hazards were reviewed, and environmental compliance procedures were outlined.

Approximately 15 bbls of cement were returned to surface.

Halliburton maintains a continuous quality improvement process and appreciates any comments or suggestions that you may have. Halliburton again thanks you for the opportunity to perform service work on this well. We hope to be your solutions provider for future projects.

Respectfully,

Halliburton Fort Lupton

The Road to Excellence Starts with Safety

Sold To #: 369404		Ship To #: 3895042		Quote #:		Sales Order #: 0906542226					
Customer: EXTRACTION OIL & GAS-EBUS				Customer Rep: Blaine Dunlavy							
Well Name: RINN VALLEY WEST			Well #: 18N-20-14N		API/UWI #: 05-123-47482-00						
Field: WATTENBERG		City (SAP): FIRESTONE		County/Parish: WELD		State: COLORADO					
Legal Description: SE SE-18-2N-68W-217FSL-1009FEL											
Contractor: ENSIGN DRLG				Rig/Platform Name/Num: ENSIGN 147							
Job BOM: 7521 7521											
Well Type: HORIZONTAL OIL											
Sales Person: HALAMERICA\HX41066				Srvc Supervisor: Nathaniel Moore							
Job											
Formation Name											
Formation Depth (MD)		Top		Bottom							
Form Type				BHST							
Job depth MD		1621ft		Job Depth TVD		1621					
Water Depth				Wk Ht Above Floor							
Perforation Depth (MD)		From		To							
Well Data											
Description	New / Used	Size in	ID in	Weight lbm/ft	Thread	Grade	Top MD ft	Bottom MD ft	Top TVD ft	Bottom TVD ft	
Open Hole Section			13.5				0	1621	0	1621	
Casing	0	9.625	8.921	36			0	1621	0	1621	
Tools and Accessories											
Type	Size in	Qty	Make	Depth ft		Type	Size in	Qty	Make		
						Top Plug	9.625	1	HES		
Float Shoe	9.625			1621							
Float Collar	9.625			1577							
						Plug Container	9.625	1	HES		
Fluid Data											
Stage/Plug #: 1											
Fluid #	Stage Type	Fluid Name			Qty	Qty UoM	Mixing Density lbm/gal	Yield ft3/sack	Mix Fluid Gal	Rate bbl/min	Total Mix Fluid Gal
1	Water with dye	Water with dye			10	bbl	8.34				

Fluid #	Stage Type	Fluid Name	Qty	Qty UoM	Mixing Density lbm/gal	Yield ft ³ /sack	Mix Fluid Gal	Rate bbl/min	Total Mix Fluid Gal
2	SwiftCem	SWIFTCM (TM) SYSTEM	525	sack	13.5	1.74		8	9.17
9.17 Gal		FRESH WATER							
0.1250 lbm		POLY-E-FLAKE (101216940)							
Fluid #	Stage Type	Fluid Name	Qty	Qty UoM	Mixing Density lbm/gal	Yield ft ³ /sack	Mix Fluid Gal	Rate bbl/min	Total Mix Fluid Gal
3	Displacement	Displacement	122	bbl	8.34				
Cement Left In Pipe	Amount	44 ft			Reason			Shoe Joint	
Mix Water:	pH 7	Mix Water Chloride:	<300 ppm			Mix Water Temperature:	68 °F		
Cement Temperature:	68 °F	Plug Displaced by:	Water			Disp. Temperature:			
Plug Bumped?	Yes	Bump Pressure:	573 psi			Floats Held?	Yes		
Cement Returns:	15 bbl	Returns Density:	13.5 lb/gal			Returns Temperature:			
Comment									

2.0 Real-Time Job Summary

2.1 Job Event Log

Type	Seq. No.	Activity	Graph Label	Date	Time	Source	PS Pump Press (psi)	DH Density (ppg)	Comb Pump Rate (bbl/min)	Pump Stg Tot (bbl)	Comments
Event	1	Call Out	Call Out	6/6/2020	00:00:00	USER					Ready to pump at 0400
Event	2	Arrive At Loc	Arrive At Loc	6/6/2020	03:00:00	USER					End journey management. Meet with company representative to discuss job: Surface Casing: 13.5" hole to 1621'. 9 5/8" 36# casing to 1621'. FC at 1577'. 8.5 ppg water based well fluid.
Event	3	Pre-Rig Up Safety Meeting	Pre-Rig Up Safety Meeting	6/6/2020	05:00:00	USER	-3.00	8.23	0.00	13.10	Hazard hunt. Discussed possible hazards associated with location, rig up, job performance, and weather.
Event	4	Rig-Up Completed	Rig-Up Completed	6/6/2020	05:20:00	USER	-4.00	8.24	0.00	13.10	Rigged up complete / Rigged up to a edge of red zone
Event	5	Pre-Job Safety Meeting	Pre-Job Safety Meeting	6/6/2020	05:30:00	USER	-4.00	8.24	0.00	13.10	Meeting with Halliburton and rig personnel. Communicated potential safety hazard and job details.
Event	6	Start Job	Start Job	6/6/2020	05:40:04	COM5	-5.00	7.94	0.00	0.00	Fill lines 2 bbl water
Event	7	Test Lines	Test Lines	6/6/2020	05:40:59	COM5	64.00	8.42	0.00	1.40	500 psi kickout test and 3000 psi pressure test
Event	8	Pump Spacer 1	Pump Spacer 1	6/6/2020	05:42:44	COM5	52.00	8.35	1.40	1.50	10 bbl dyed water
Event	9	Pump Lead Cement	Pump Lead Cement	6/6/2020	05:46:59	COM5	257.00	14.15	6.20	0.10	525 sks/162 bbl SwiftCem 13.5 ppg 1.74 ft3/sk 9.17 gal/sk

iCem® Service

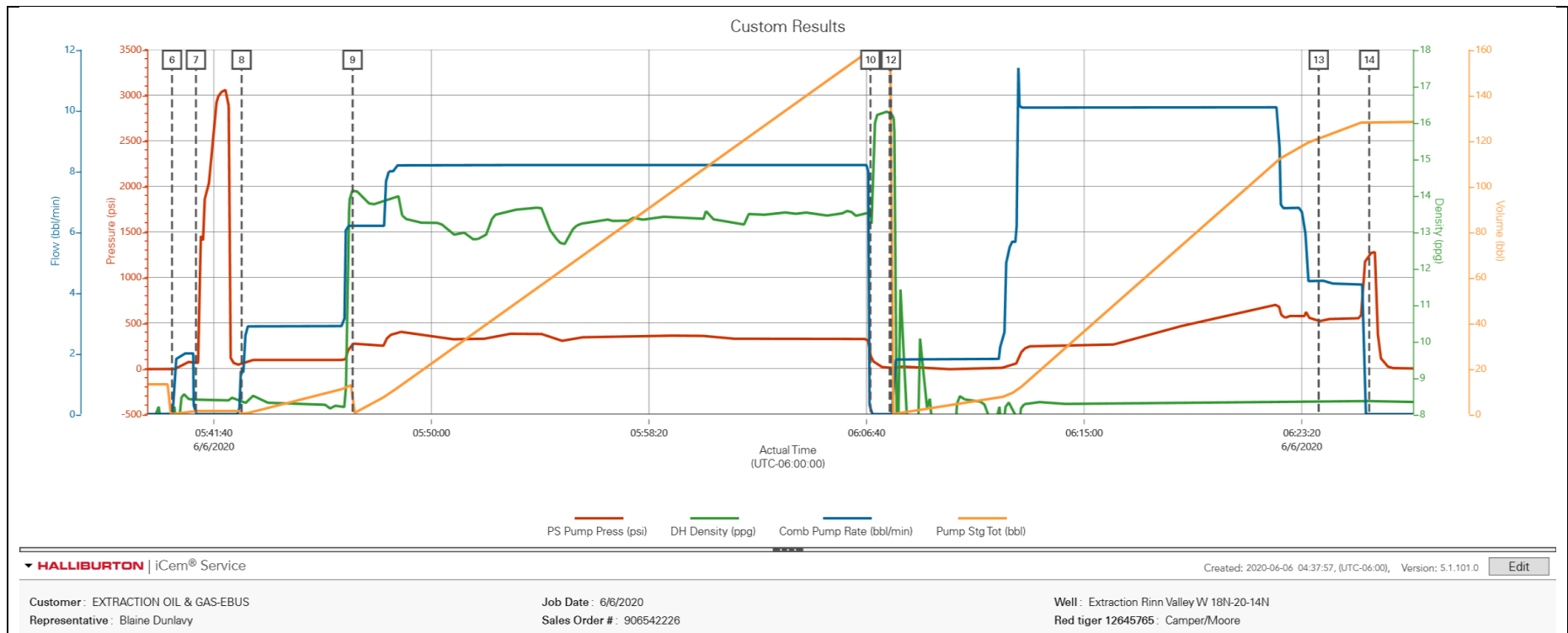
(v. 5.1.101.0)

Created: Saturday, June 06, 2020

Event	10	Shutdown	Shutdown	6/6/2020	06:06:49	COM5	146.00	13.66	0.00	159.30	Washup on top of the plug
Event	11	Drop Top Plug	Drop Top Plug	6/6/2020	06:07:33	COM5	8.00	16.28	0.00	159.30	HES top plug witnessed by company rep
Event	12	Pump Displacement	Pump Displacement	6/6/2020	06:07:36	COM5	7.00	16.26	0.00	0.00	122 bbl water displacement.
Event	13	Other	Other	6/6/2020	06:23:59	COM5	534.00	8.33	4.40	121.00	Cement to surface 107 bbl into displacement. 15 bbl of cement back.
Event	14	Bump Plug	Bump Plug	6/6/2020	06:25:55	COM5	1252.00	8.36	0.00	128.30	573 psi final pump pressure. Pressured up to 1117 psi.
Event	15	End Job	End Job	6/6/2020	06:29:06	COM5	104.00	8.34	6.00	129.40	Check floats. 0.5 bbl back. Floats held.
Event	16	Pre-Rig Down Safety Meeting	Pre-Rig Down Safety Meeting	6/6/2020	07:00:00	USER					Discussed possible hazards associated with weather, location and rigging down iron and hoses.
Event	17	Rig-Down Completed	Rig-Down Completed	6/6/2020	07:30:00	USER					All Halliburton items were secured for travel.

3.0 Attachments

3.1 Job Chart



3.2 Recorded Data

