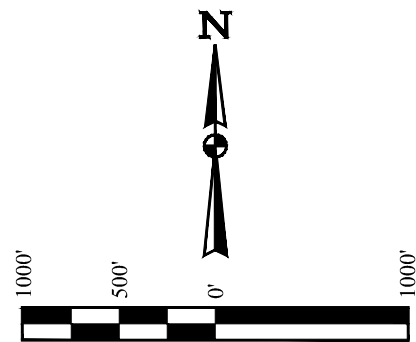


T8N, R59W, 6th P.M.

- LEGEND:
- = PROPOSED WELLHEAD.
 - ◊ = PRODUCTION INTERVAL.
 - = TARGET BOTTOM HOLE.
 - ▲ = SECTION CORNERS LOCATED. (NAD 83)

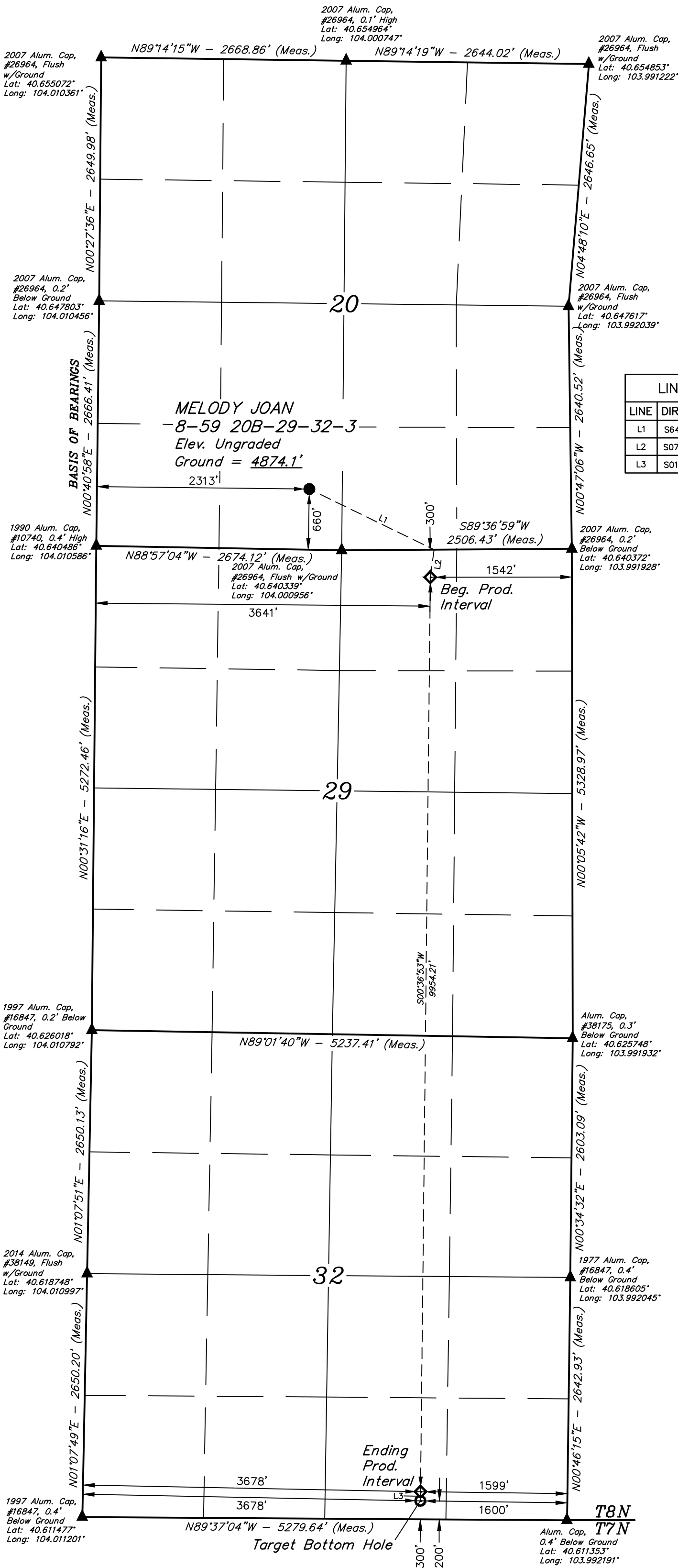
NOTE:
Distances referenced
on plat to section lines
are perpendicular.



BASIS OF ELEVATION

SPOT ELEVATION LOCATED AT THE NORTHEAST CORNER OF SECTION 2, T9N, R61W, 6th P.M., TAKEN FROM THE GROVER SOUTH, QUADRANGLE, COLORADO, WELD COUNTY, 7.5 MINUTE QUAD (TOPOGRAPHICAL MAP) PUBLISHED BY THE UNITED STATES DEPARTMENT OF THE INTERIOR, GEOLOGICAL SURVEY. SAID ELEVATION IS MARKED AS BEING 5043 FEET.

LINE TABLE		
LINE	DIRECTION	LENGTH
L1	S64°05'46"E	1510.46'
L2	S07°46'09"W	303.06'
L3	S01°07'49"W	100.01'



PDOP = 1.2

SURFACE LOCATION	
660' FSL 2313' FWL	
NAD 83 (SURFACE LOCATION)	
LATITUDE = 40°38'31.81" (40.642169)	LONGITUDE = 104°00'08.00" (104.002222)
NAD 27 (SURFACE LOCATION)	
LATITUDE = 40°38'31.85" (40.642182)	LONGITUDE = 104°00'06.18" (104.001717)
STATE PLANE NAD 83 (CO. NORTH)	
N: 1480294.77 E: 3415636.70	
STATE PLANE NAD 27 (CO. NORTH)	
N: 480293.31 E: 2415787.88	
BEG. PROD. INTERVAL	
300' FSL 3641' FWL 1542' FEL	
NAD 83 (BEG. PROD. INTERVAL)	
LATITUDE = 40°38'22.30" (40.639528)	LONGITUDE = 103°59'50.93" (103.997482)
NAD 27 (BEG. PROD. INTERVAL)	
LATITUDE = 40°38'22.34" (40.639540)	LONGITUDE = 103°59'49.12" (103.996976)
STATE PLANE NAD 83 (CO. NORTH)	
N: 1479354.82 E: 3416968.40	
STATE PLANE NAD 27 (CO. NORTH)	
N: 479353.38 E: 2417119.63	
ENDING PROD. INTERVAL	
300' FSL 3678' FWL 1599' FEL	
NAD 83 (ENDING PROD. INTERVAL)	
LATITUDE = 40°36'43.97" (40.612214)	LONGITUDE = 103°59'52.56" (103.997934)
NAD 27 (ENDING PROD. INTERVAL)	
LATITUDE = 40°36'44.02" (40.612227)	LONGITUDE = 103°59'50.74" (103.997428)
STATE PLANE NAD 83 (CO. NORTH)	
N: 1469403.32 E: 3417011.51	
STATE PLANE NAD 27 (CO. NORTH)	
N: 469402.05 E: 2417162.89	
TARGET BOTTOM HOLE	
200' FSL 3678' FWL 1600' FEL	
NAD 83 (TARGET BOTTOM HOLE)	
LATITUDE = 40°36'42.98" (40.611940)	LONGITUDE = 103°59'52.59" (103.997941)
NAD 27 (TARGET BOTTOM HOLE)	
LATITUDE = 40°36'43.03" (40.611952)	LONGITUDE = 103°59'50.77" (103.997436)
STATE PLANE NAD 83 (CO. NORTH)	
N: 1469303.34 E: 3417011.04	
STATE PLANE NAD 27 (CO. NORTH)	
N: 469302.07 E: 2417162.43	

CERTIFICATE OF RECORD REGISTRATION
THIS IS TO CERTIFY THAT THE ABOVE IS A TRUE AND CORRECT COPY OF THE ORIGINAL SURVEY RECORDS AND THAT THE SAME ARE TRUE AND CORRECT TO THE BEST OF MY KNOWLEDGE AND BELIEF.

REGISTERED LAND SURVEYOR
REGISTRATION NO. 28285
STATE OF COLORADO
JAMES FRESHWATER, G.B.

REV: 2 04-09-20 K.B. (SL & BPI CHANGE)

BISON OIL & GAS II

MELODY JOAN 8-59 20B-29-32-3
SE 1/4 SW 1/4, SECTION 20, T8N, R59W, 6th P.M.
WELD COUNTY, COLORADO



UELS, LLC
Corporate Office * 85 South 200 East
Vernal, UT 84078 * (435) 789-1017

SURVEYED BY	JAMES FRESHWATER, G.B.	10-31-17	SCALE
DRAWN BY	J.J.	11-10-17	1" = 1000'

WELL LOCATION PLAT