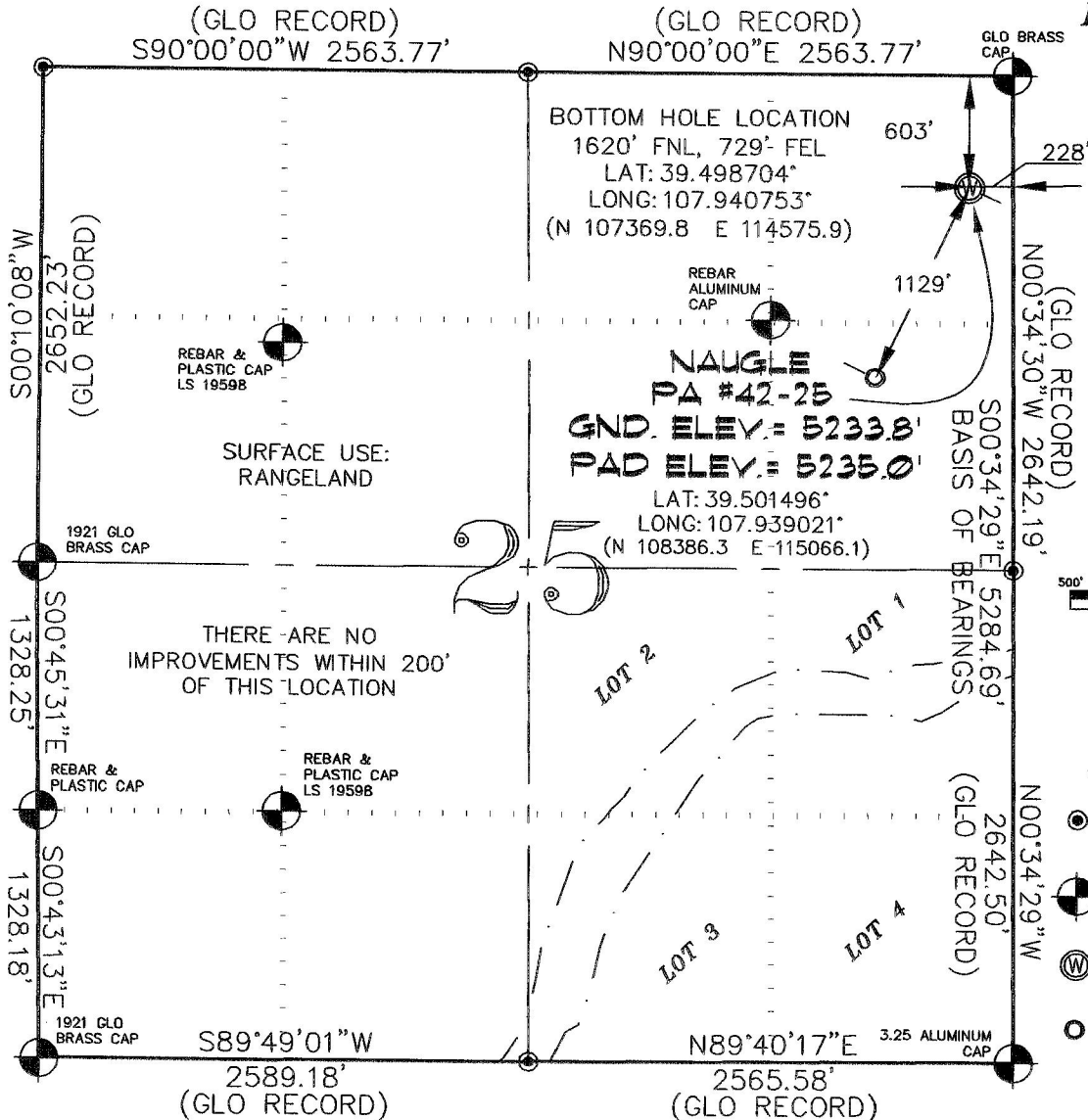


SEC. 25, T. 6 S., R. 95 W. OF THE 6TH P.M.

PLAT #1
LOCATION PLAT



THIS WELL LOCATION PLAT WAS PREPARED FOR: WILLIAMS PRODUCTION, RMT TO LOCATE THE PA #42-25 WELL, 603 FEET FROM THE NORTH LINE AND 228 FEET FROM THE EAST LINE IN THE NE1/4 NE1/4 OF SECTION 25, T. 6 S., R. 95 W. OF THE 6TH P.M. GARFIELD COUNTY, COLORADO.

REFERENCE NOTES

- 1) T. 6 S., R. 95 W., 6TH P.M. GLO PLAT.
- 2) U.S.G.S. QUAD: RULISON, CO
- 3) ELEVATIONS BASED ON N.A.V.D. 1988
- 4) LATITUDES AND LONGITUDES ARE BASED ON NAD 83, COLORADO CENTRAL ZONE.
- 5) GPS OPERATOR IVAN MARTIN, OBSERVED A PDOP OF 1.9.
- 6) ALL GPS OBSERVATIONS ARE IN COMPLIANCE WITH COGCC RULE NO. 215.
- 7) SURFACE AND BOTTOM HOLE LOCATIONS ARE MEASURED 90° FROM SECTION LINES.

SURVEYOR'S CERTIFICATE

I, George R. Bauer: a Professional Land Surveyor in the State of Colorado do hereby certify that this Survey was made under my direct supervision, and that this Plat represents said Survey.

GEORGE R. BAUER
27925
9/30/07

COLORADO P.L.S. 27925

REVIS: 5/28/07

VIEW: 1E



CONSTRUCTION SURVEYS, INC.
0012 SUNRISE BLVD.
SILT, CO 81652
970-876-5753

SURVEYED: 05/11/06

SCALE: 1" = 1000'

DRAFTED: 05/17/06

DWG: BARRETT\PA41-25

CHECKED: 05/18/06

SHEET: 1 OF 4



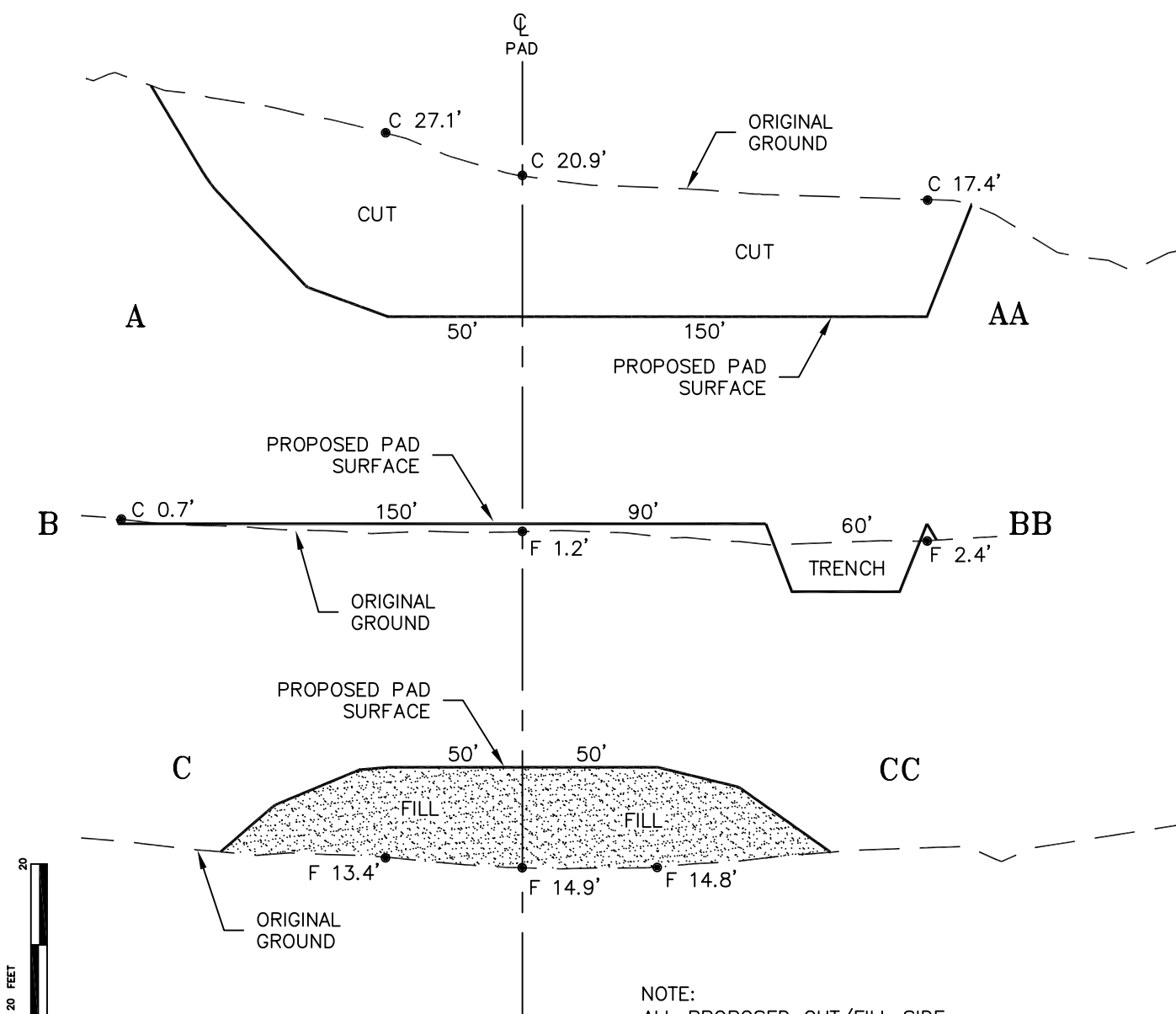
WILLIAMS PRODUCTION, RMT

SCALE: 1" = 80'

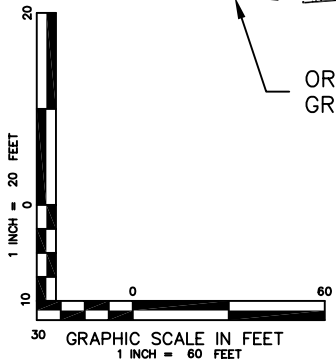
SHEET: 2 of 9

ESTIMATED DIRT QUANTITIES (YDS)				
ITEM	CUT	FILL	TOPSOIL	EXCESS
PAD	31630	23520	3080	5030
CUTTINGS TRENCH	4780			4780
TOTALS	36710	23520	3080	9810

PLAT #3 **CROSS SECTIONS OF PIT & PAD**



NOTE:
 ALL PROPOSED CUT/FILL SIDE
 SLOPES ARE 1.5:1



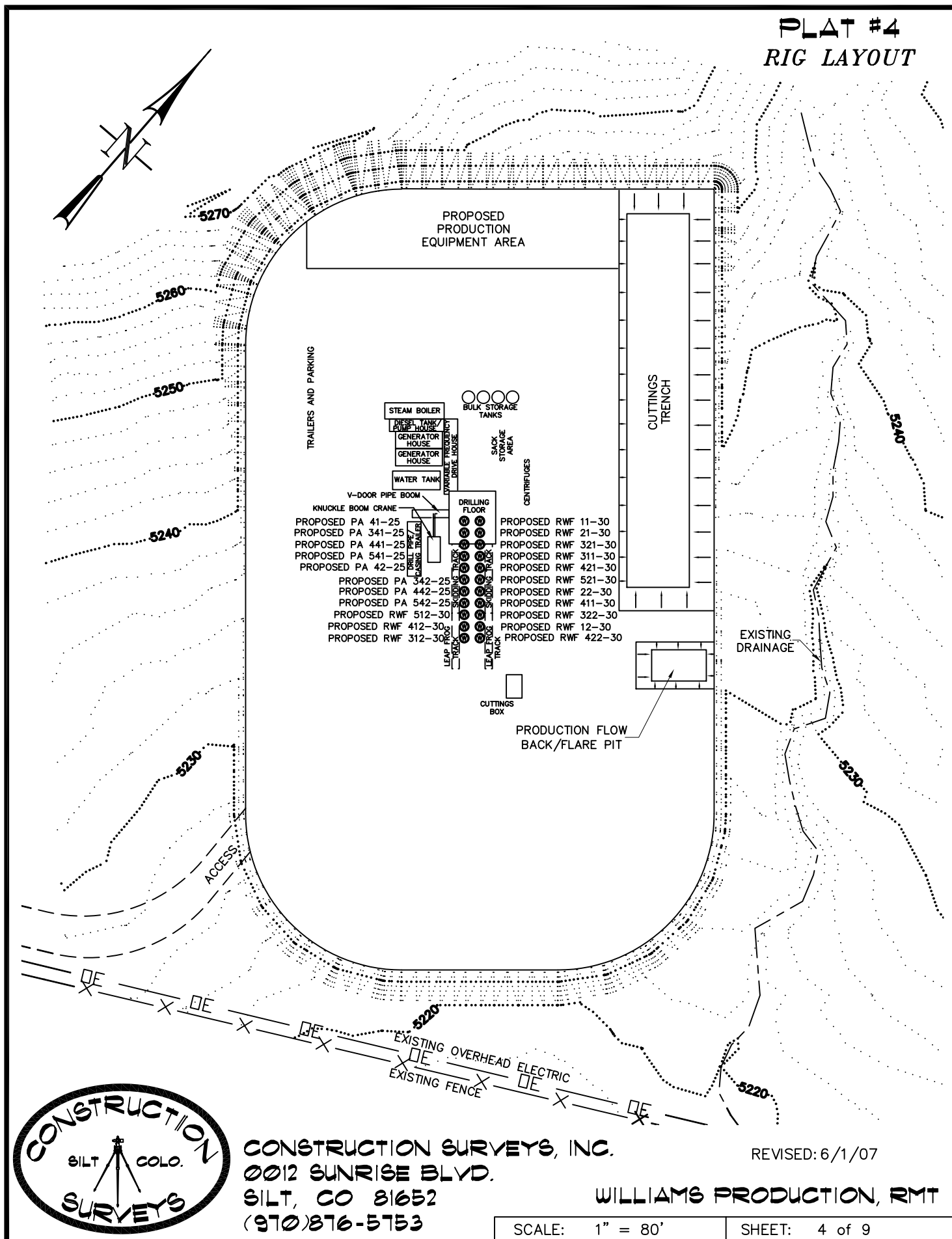
CONSTRUCTION SURVEYS, INC.
 0012 SUNRISE BLVD.
 SILT, CO 81652
 (970)876-5753

REVISED: 6/1/07

WILLIAMS PRODUCTION, RMT

SCALE: AS SHOWN	SHEET: 3 of 9
-----------------	---------------

PLAT #4 RIG LAYOUT



CONSTRUCTION SURVEYS, INC.
0012 SUNRISE BLVD.
SILT, CO 81652
(970)876-5753

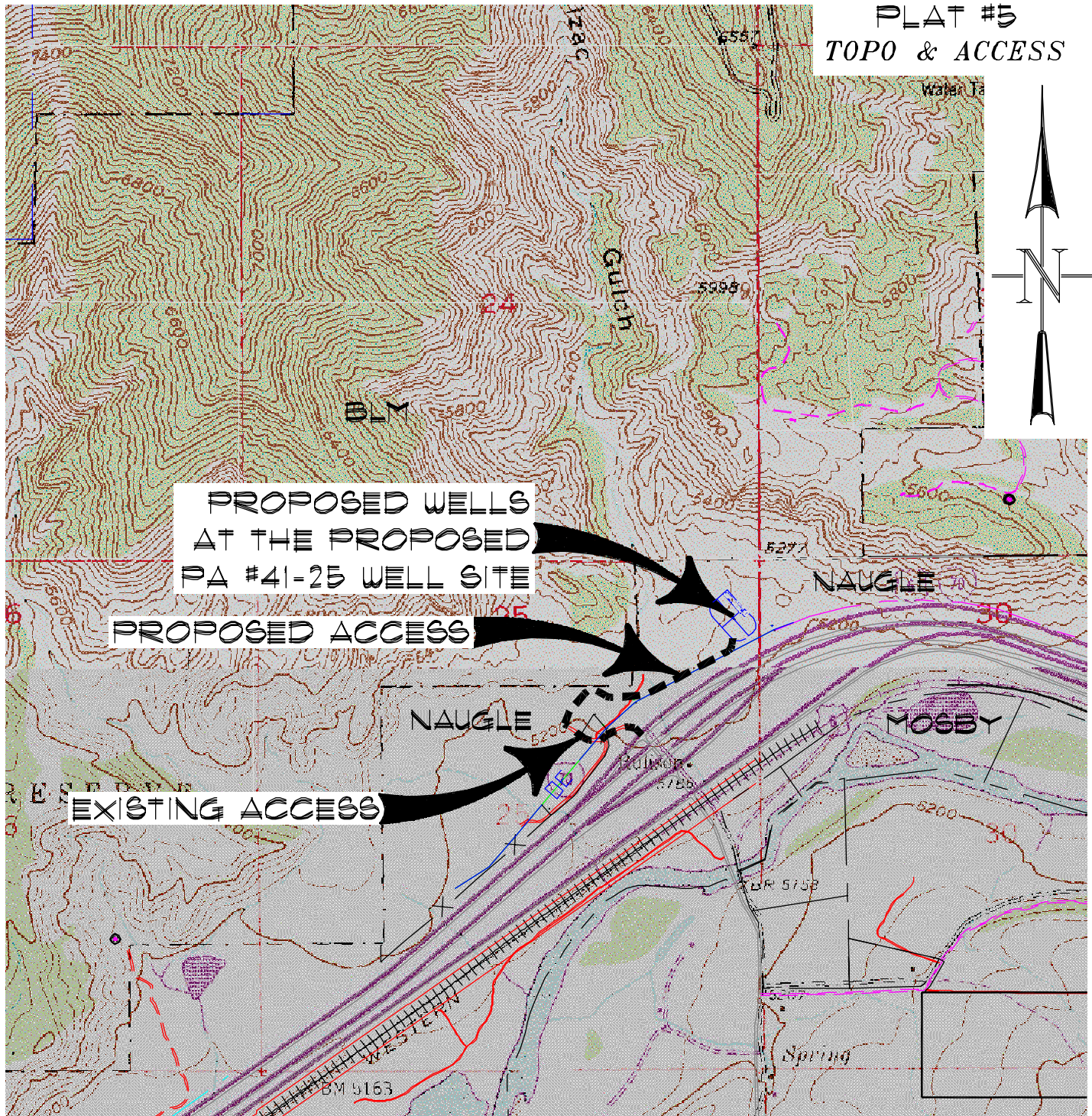
REVISED: 6/1/07

WILLIAMS PRODUCTION, RMT

SCALE: 1" = 80'

SHEET: 4 of 9

**PLAT #5
TOPO & ACCESS**



ACCESS:

FROM THE I-70 WESTBOUND EXIT RAMP AT THE RULISON EXIT, PROCEED NORTHWESTERLY ± 0.1 MILES ALONG THE DIRT/GRAVEL ROAD TO A 'T' INTERSECTION, PROCEED RIGHT IN A GENERAL NORTHWESTERLY DIRECTION ± 0.1 MILES TO AN INTERSECTION WITH A PROPOSED FLAGGED ACCESS CENTERLINE, PROCEED FORWARD IN A GENERAL NORTHEASTERLY DIRECTION ± 0.4 MILES TO THE PROPOSED PA #41-25 WELL SITE, BEING THE LOCATION.



CONSTRUCTION SURVEYS, INC.
0012 SUNRISE BLVD.
SILT, CO 81652
(970)876-5753

REVISED: 7/21/06

WILLIAMS PRODUCTION RMT

SCALE: 1" = 2000'

SHEET 5 OF 9



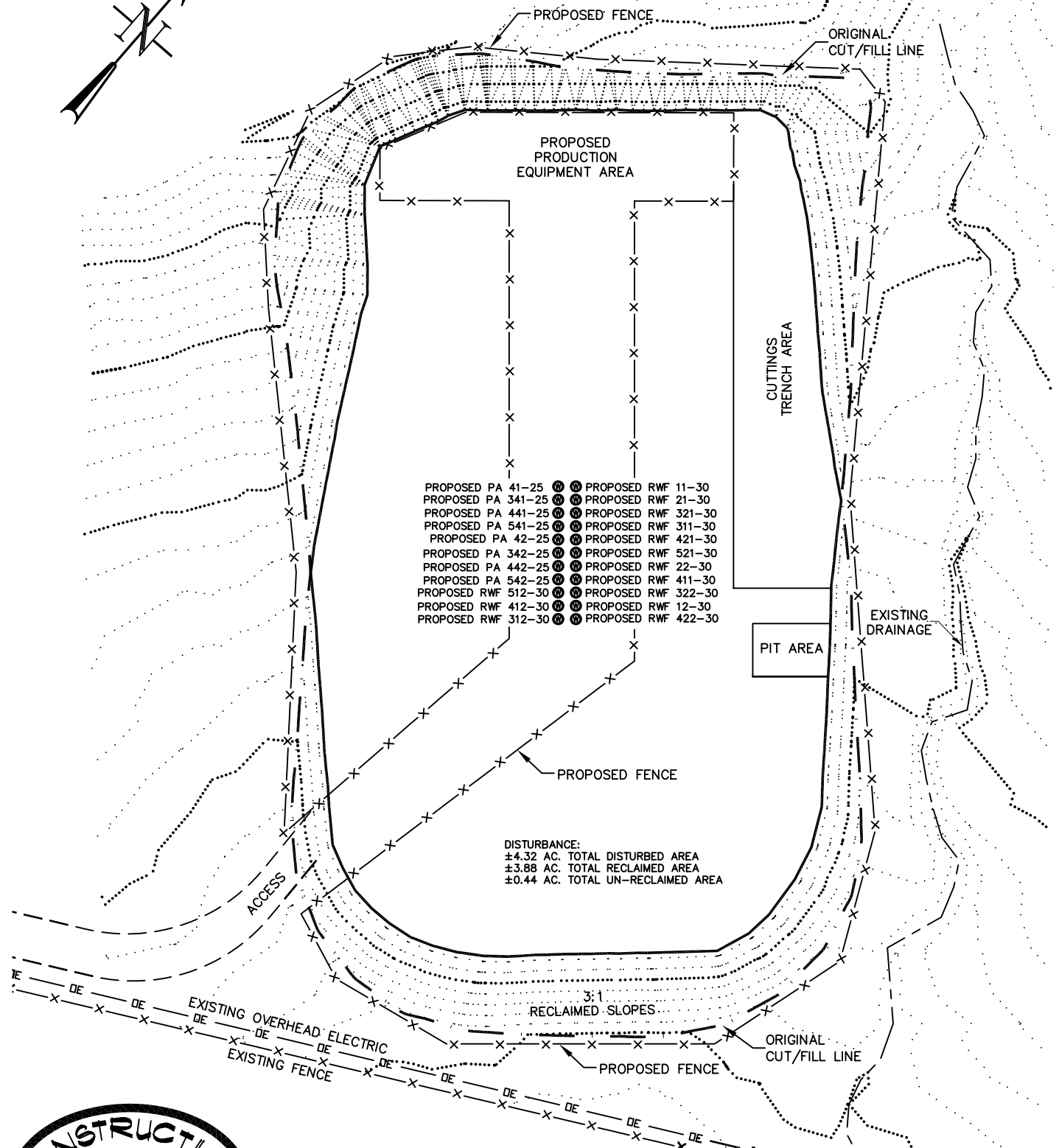
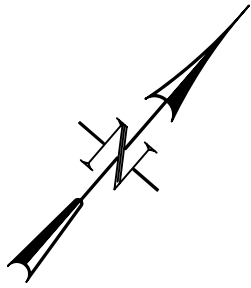
REVISÉ: 5/25/07

WILLIAMS PRODUCTION, RMT

SCALE: 1" = 500'

SHEET: 6 OF 9

PLAT #7 **RECLAMATION PAD &** **PRODUCTION EQUIPMENT LAYOUT**



CONSTRUCTION SURVEYS, INC.
 0012 SUNRISE BLVD.
 SILT, CO 81652
 (970)876-5753

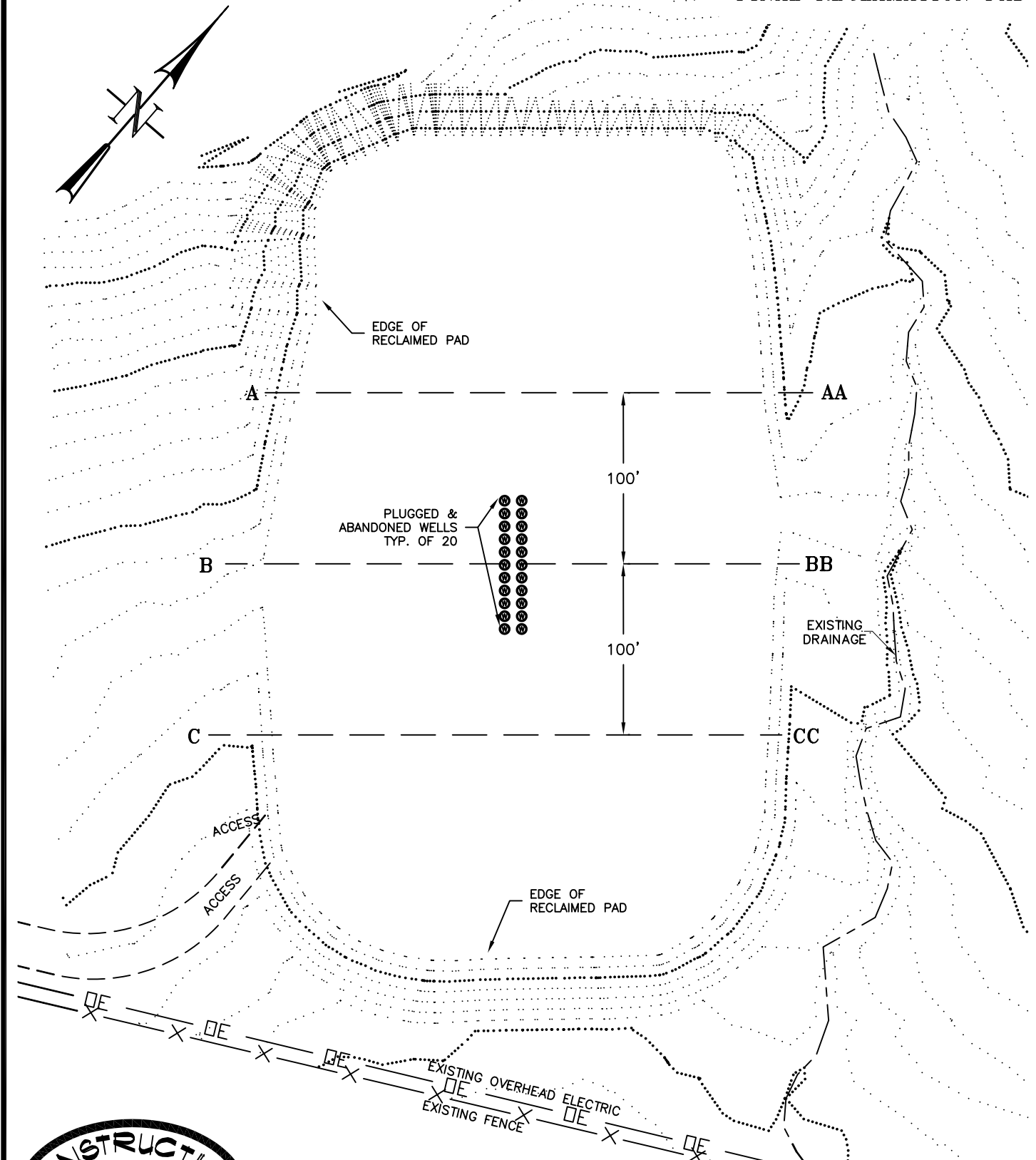
REVISED: 6/1/07

WILLIAMS PRODUCTION RMT

SCALE: 1" = 80'

SHEET: 7 of 9

PLAT #8
FINAL RECLAMATION PAD



CONSTRUCTION SURVEYS, INC.
0012 SUNRISE BLVD.
SILT, CO 81652
(970)876-5753

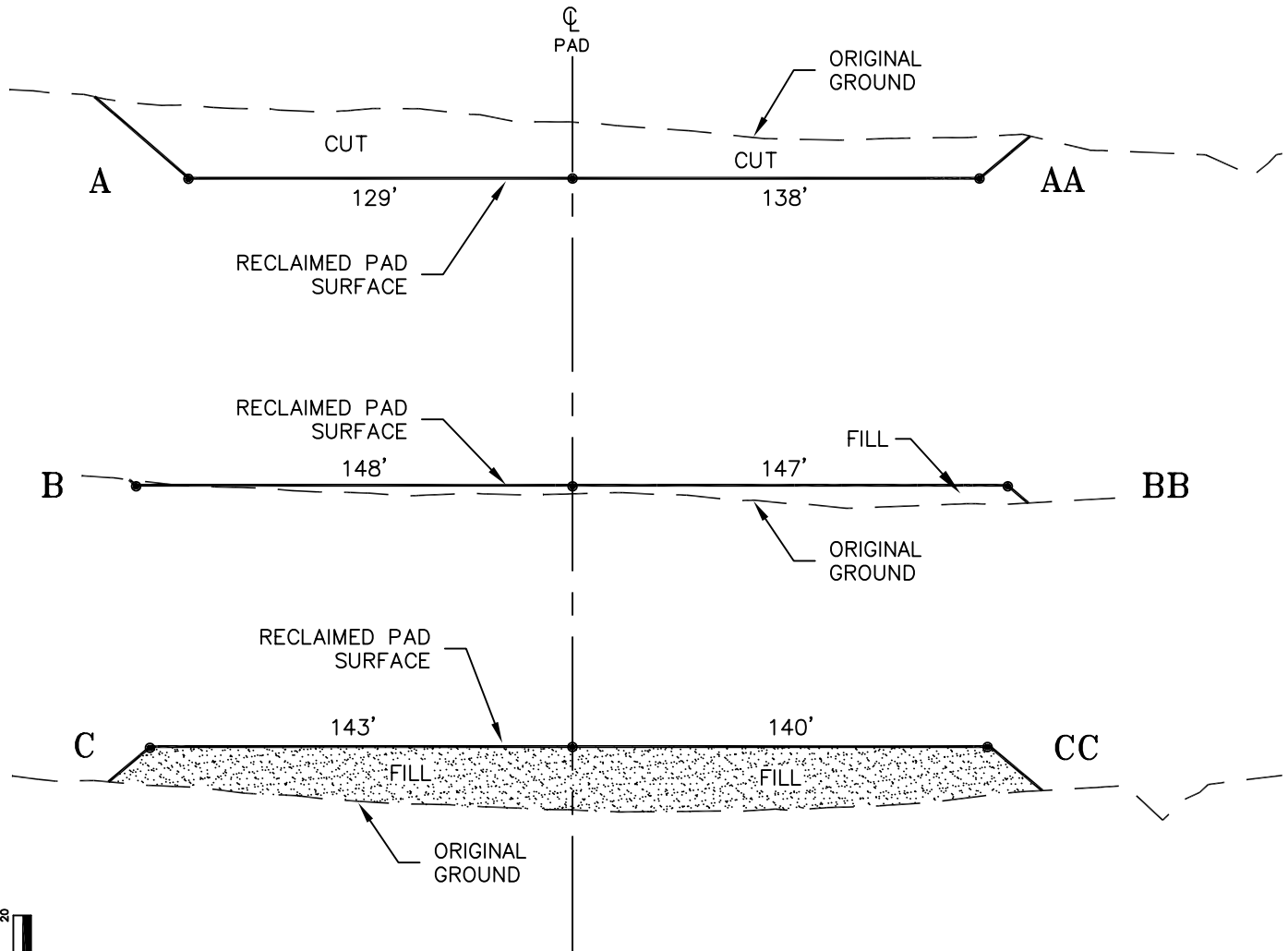
REVISED: 5/25/07

WILLIAMS PRODUCTION RMT

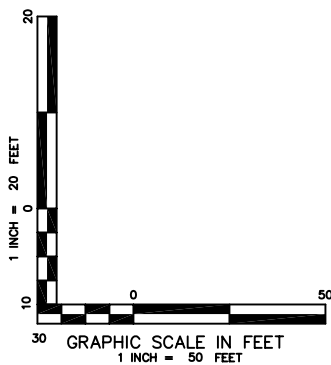
SCALE: 1" = 80'

SHEET: 8 of 9

PLAT #9
CROSS SECTIONS OF
FINAL RECLAMATION PAD



NOTE:
 ALL EXISTING RECLAIMED SIDE SLOPES
 ARE 3:1 UNLESS OTHERWISE NOTED



CONSTRUCTION SURVEYS, INC.
 0012 SUNRISE BLYD.
 SILT, CO 81652
 (970)876-5753

WILLIAMS PRODUCTION, RMT

SCALE: AS SHOWN

SHEET: 9 of 9