



Magnum Cementing Services Operations Ltd. LLC  
P.O Box 60010  
Strathmore, Alberta T1P 0C3

# Field Ticket

Job Date: March 31, 2020  
Job Number: JOB00083698

Bill To:  
PDC Energy  
PO Box 26

Bridgeport, West Virginia  
26330

UWI: Booth 43-35  
Surface: NESE, SEC 35, 7N, 65W  
Pricing Area: Area 1  
Competitive: STDU  
Depth: 3060  
Job Type: Balanced Plug

	Units	Per	Unit Price	Cost
<b>Services and Equipment</b>				
PCMP Add Time: Operating		1 HR		
PCMP Unit Travel		50 MI		
PCMP - Remedial Set Up (6 Hr min)		3,060 FT		
<b>Equipment</b>				
MDAC		1 Job		
Communication Headsets		2 RDIO		
<b>Material Handling &amp; Delivery</b>				
Bulk Material Blending		500 SKS		
Bulk Material Delivery		25,000 SKMI		
<b>Products &amp; Materials</b>				
MAG S 14.1		266 SKS		
MCDF-L		4 GAL		

Customer Stamp:

SERVICES PROVIDED BY MAGNUM CEMENTING SERVICES  
LTD. ARE GOVERNED BY AND SUBJECT TO THE ATTACHED  
TERMS AND CONDITIONS.

Received By: Hector Terrazas 970-506-9272  
Comments:

All totals are estimated (including mileage), and are subject to change depending on actual amounts used. Applicable taxes will be added to the invoice. Prices may change without notice due to fluctuating market conditions. Prices are in effect for 30 days from date shown.



## US Treatment Report

**Customer:** PDC Energy  
**Rep:** Hector Terrazas  
**Supervisor:** Vitalijs Neverdasovs  
**Job Type:** US Remedial  
 Balanced Plug

**Rig:** Ensign 354  
**Well:** PDC Booth 43-35  
**UWI:** Booth 43-35  
**Surface:** NESE, SEC 35, 7N, 65W

**Job #:** JOB00083698  
**Job Date:** Mar 31 @ 08:00  
**Time Requested:** Mar 31 @ 08:00  
**Time Arrived:** Mar 31 @ 10:00  
**Time Released:** Mar 31 @ 16:30

266 sk    MAG S 14.1

Yield: 1.28 ft<sup>3</sup>/sk = 60.64bbls    Mix Water: 5.89 gal/sk = 1566.74gal

Casing 1 Casing Size (in)	8.625	Casing 1 Weight (lb/ft)	24	Casing 2 Casing Size (in)	4.5
Casing 2 Weight (lb/ft)	10.5	Hole Size (in)	10	Mud Type	TBD
Perfs Set 1 (ft)	3060 to 2800	Perfs Set 2 (ft)	1750 to 1540	Perfs Set 3 (ft)	607 to 0
TMD (ft)	3060	Tubing (in)	2.375	Tubing WT (lb/ft)	4.7
TVD (ft)	3060				

Treatment Info:    Sacks Used: 0    Sacks Not Used: 0

Preflush: 10bbls Fresh Water

Displace:

Circulation Time:

Slurry Temp: 58    Bulk Sample: Yes  
 Water Temp: 55    Water Sample: Yes  
 Bulk Temp: 62    Slurry Sample: Yes

Slurry Returns:    Plug Bumped:    Pump Out Lines: Yes    Float Held:

Time	Pressure psi	Annular Pressure psi	Volume Per Stage bbls	Total Stage Volume bbls	Rate bbls/mi n	Treatment Detail
10:00	0.00					Arrive on Location
11:40	0.00					Safety Meeting - DISCUSS HAZARDS AND JOB PROCEDURE WITH ALL PERSONELL INVOLVED
11:53	862.00		10		2.4	Fill Lines - LOAD LINE/ BRAKE CIRCULATION
11:59	2,221.00		0.1	0.1	0.2	Start Pressure Test
12:03	623.00		20.5		2.0	Pump Slurry - BATCH/ WEIGHT/ PUMP 90 SKS OF MAG S @ 14.1 PPG. CALCULATED TOP OF CEMENT @2800'.
12:13	106.00		9		2.0	Displace - FRESH WATER DISPLACEMENT
12:18	0.00					CEMENT CREW ON STAND BY. WAITING FOR 2ND STAGE.
12:18	0.00					Stop Pumping - SHUT DOWN/ OPEN BLEED OFF
14:02	321.00		2		1.0	FRESH WATER AHEAD
14:09	150.00		5		1.0	Displace - FRESH WATER DISPLACEMENT
14:19	0.00					CEMENT CREW WAITING FOR NEXT STAGE
14:19	0.00					Stop Pumping - SHUTDOWN/ OPEN BLEED OFF
16:12	350.00		20.5		2.2	Pump Slurry - BATCH/WEIGHT/PUMP 90 SKS OF MAG S @ 14.1 PPG. PER CUSTOMER SET PLUG TO THE SURFACE SHOE





Customer: PDC

Date: MARCH 31 2020

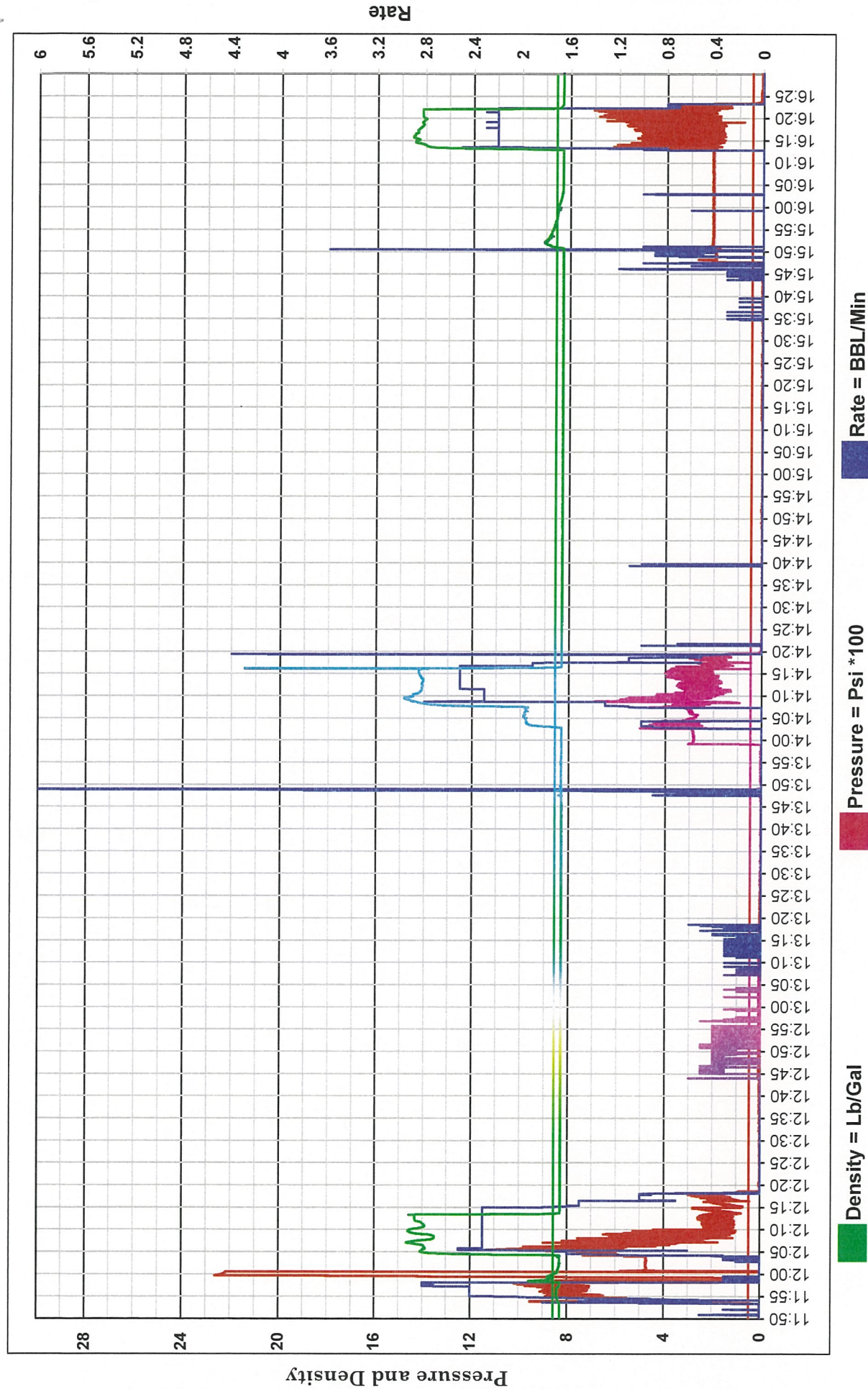
Ticket: 83698

Well Name: BOOTH 43-35

UWI: BOOTH 43-35

Job Type: P & A

Unit  
1015





Magnum Cementing Services LLC LLC  
600 17th Street, Ste 2800S  
Denver, Colorado 80202

Field Ticket

Job Date: April 01, 2020  
Job Number: JOB00083738

Bill To:  
PDC Energy  
PO Box 26  
  
Bridgeport, West Virginia  
26330

UWI: Booth 43-35  
Surface: NESE, Sec 35, 7N, 65W  
Pricing Area: Area 1  
Competitive: STDU  
Depth: 607  
Job Type: Balanced Plug

	Units	Per	Unit Price	Cost
<b>Services and Equipment</b>				
PCMP Unit Travel	50	MI		
PCMP - Remedial Set Up (6 Hr min)	607	FT		
<b>Equipment</b>				
MDAC	1	UNIT		
Communication Headsets	2	UNIT		
<b>Material Handling &amp; Delivery</b>				
Bulk Material Blending	400	SKS		
Bulk Material Delivery	20,000	SKMI		
<b>Products &amp; Materials</b>				
MAG S 14.1	251	SKS		
MCDF-L	4	GAL		

Customer Stamp:

SERVICES PROVIDED BY MAGNUM CEMENTING SERVICES  
LTD. ARE GOVERNED BY AND SUBJECT TO THE ATTACHED  
TERMS AND CONDITIONS.

Received By: Hector Terrazas 970-506-9272  
Comments:

All totals are estimated (including mileage), and are subject to change depending on actual amounts used. Applicable taxes will be added to the invoice. Prices may change without notice due to fluctuating market conditions. Prices are in effect for 30 days from date shown.





## US Treatment Report

**Customer:** PDC Energy  
**Rep:** Hector Terrazas  
**Supervisor:** Vitalijs Neverdasovs  
**Job Type:** US Remedial  
 Balanced Plug

**Rig:** Rigless  
**Well:** PDC Booth 43-35  
**UWI:** Booth 43-35  
**Surface:** NESE, Sec 35, 7N, 65W

**Job #:** JOB00083738  
**Job Date:** Apr 01 @ 00:00  
**Time Requested:** Apr 01 @ 07:00  
**Time Arrived:** Apr 01 @ 08:00  
**Time Released:** Apr 01 @ 10:00

251 sk     MAG S 14.1

Yield:    1.28 ft<sup>3</sup>/sk = 57.22bbls     Mix Water:    5.89 gal/sk = 1478.39gal

Casing 1 Casing Size (in)	8.625	Casing 1 Weight (lb/ft)	24	Casing 2 Casing Size (in)	4.5
Hole Size (in)	10	Mud Density (lb/gal)	8.4	Mud Type	H2O
Perfs Set 1 (ft)	607-0	TMD (ft)	607	Tubing (in)	2.375
Tubing Length (ft)	607	Tubing WT (lb/ft)	4.7	TVD (ft)	607

Treatment Info:     Sacks Used: 0     Sacks Not Used: 0

Preflush:

Circulation Time:

Displace:

Slurry Temp: 60     Bulk Sample: Yes  
 Water Temp: 50     Water Sample: Yes  
 Bulk Temp: 65     Slurry Sample: Yes

Slurry Returns:     Plug Bumped:     Pump Out Lines: Yes     Float Held:

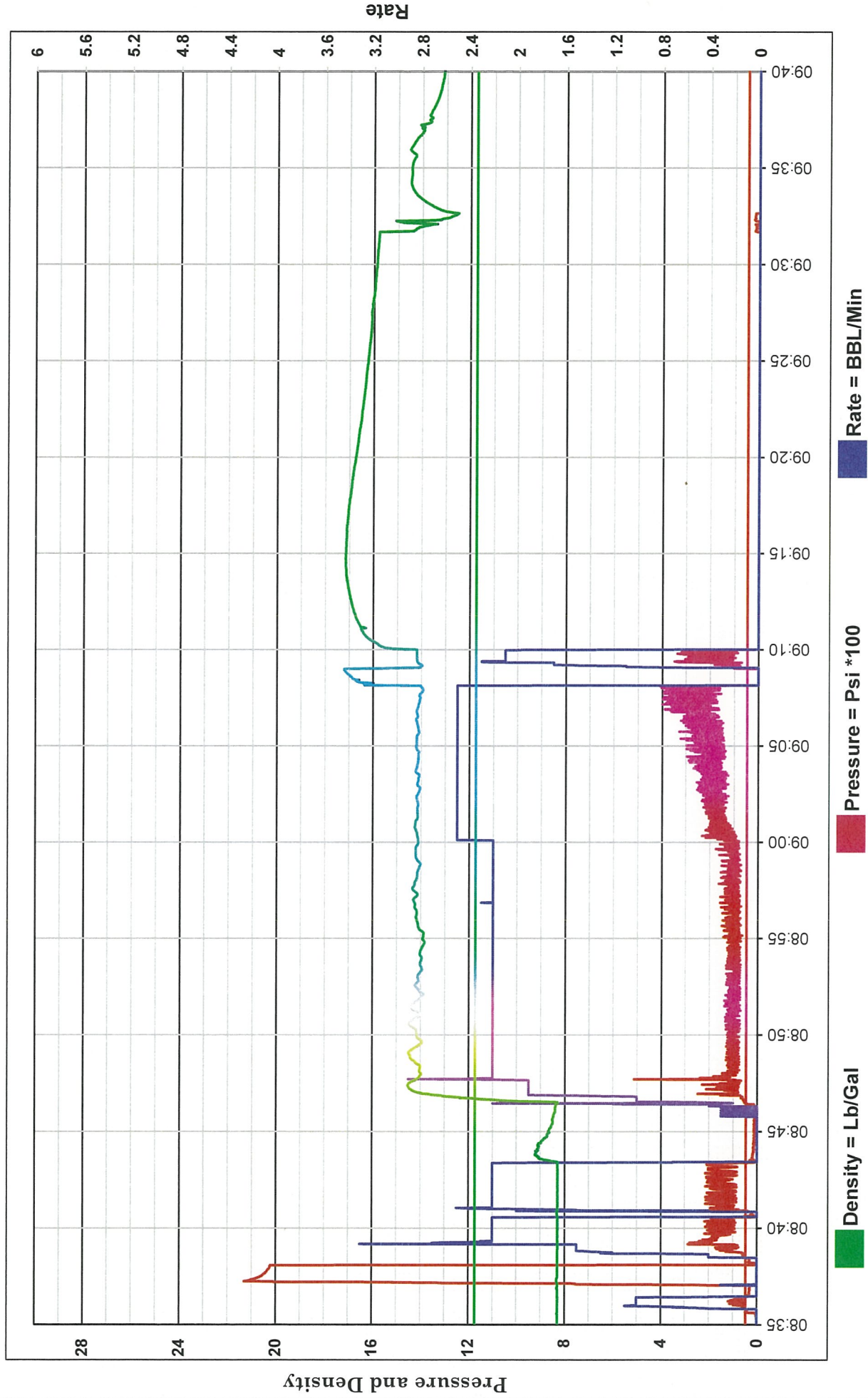
Time	Pressure psi	Annular Pressure psi	Volume Per Stage bbls	Total Stage Volume bbls	Rate bbls/mi n	Treatment Detail
08:00	0.00					Arrive on Location
08:20	0.00					Safety Meeting - DISCUSS HAZARDS AND JOB PROCEDURE WITH ALL PERSONELL INVOLVED
08:35	65.00		1		1.0	Fill Lines - LOAD LINE/ BRAKE CIRCULATION
08:37	2,150.00		0.1	0.1	0.2	Start Pressure Test
08:39	210.00		10		2.2	PUMP FRESH WATER AHEAD
08:46	115.00		57		2.2	Pump Slurry - BATCH/ WEIGHT/ PUMP 251 SKS OF MAG S @ 14.1 PPG
09:10	0.00					Stop Pumping - GOT CEMENT TO SURFACE
09:31	20.00		3		1	TOP OFF WELL
09:40	50.00		25			Wash Up Truck - WASH PUMPS AND LINES
10:05	0.00					Leave Location



Customer: PDC  
Date: APR 1 2020  
Ticket: 83738

Well Name: BOOTH 43-35  
UWI: BOOTH 43-35  
Job Type: P&A

Unit  
1015





		CUSTOMER P. O. NUMBER		SERVICE ORDER <b>4056</b>		PAGE <b>1 of 1</b>	
						DATE <b>3/30/2020</b>	
SureFire Wireline You are hereby requested to perform or attempt to perform the following service(s) or furnish the following equipment:							
SERVICE(S) AND/OR EQUIPMENT REQUESTED							
CUSTOMER		COMPANY		PDC Energy, Inc			
FURNISHED		LEASE		WELL NUMBER		43-35	
LEASE/WELL		API		05-123-21737			
INFORMATION		FIELD		PARISH/COUNTY		STATE	
		Wattenberg		Weld		Colorado	
THE UNDERSIGNED, HEREINAFTER REFERRED TO AS CUSTOMER AGREES TO PAY YOU FOR THE ABOVE SPECIFIED SERVICE(S) (INCLUDING LEASED EQUIPMENT) AND ANY ADDITIONAL SERVICE(S) REQUESTED, AT THE FIELD OFFICE OF SUREFIRE WIRELINE WEST COLORADO LLC., IN ACCORDANCE WITH THE APPLICABLE PROVISIONS OF YOUR CURRENT PRICE SCHEDULE. IN CONSIDERATION OF THE PRICES AS ARE SET OUT IN YOUR CURRENT APPLICABLE PRICE SCHEDULE WE CHOOSE TO BE BOUND BY THE TERMS AND CONDITIONS SET OUT IN THE CURRENT PRICE SCHEDULE (ALSO PRINTED ON THE REVERSE SIDE HEREOF), INCLUDING THE ASSUMPTION BY US OF THE LIABILITIES AND RESPONSIBILITIES CONTAINED IN THE RESPONSIBILITIES HEREIN ASSUMED BY US. WHEN SIGNED BY AN AGENT ON BEHALF OF CUSTOMER, SAID AGENT REPRESENTS THAT HE HAS FULL AUTHORITY FROM HIS PRINCIPAL TO EXECUTE SAME, IN THE ABSENCE OF AUTHORITY, THE SIGNER AGREES THAT HE SHALL BE OBLIGATED HEREUNDER AS CUSTOMER.							
CUSTOMER NAME <b>PDC Energy, Inc</b>							
INVOICE MAILING ADDRESS				CITY		STATE	
						ZIP CODE	
SIGNATURE OF CUSTOMER OR AUTHORIZED REPRESENTATIVE				Thank you for using SureFire Wireline!!		Total runs, all pages <b>5</b>	
THE ESTIMATED CHARGES AND DATA SHOWN ARE SUBJECT TO CORRECTION BY SUREFIRE WIRELINE WEST COLORADO ACCOUNTING UNIT NUMBER <b>804</b> OPERATION TYPE: <b>DAYLIGHT</b> WELL TYPE: <b>WORKOVER</b> ROUND TRIP MILEAGE TRIP: <b>FIRST</b> HOISTING TYPE: <b>WORKOVER RIG</b>							
WIRELINE DEPTH		MAX. WELLHEAD PRESSURE		PSI		BOTTOM HOLE PRESSURE	
						PSI	
Desc. NO.	PERF. INTERVAL	PLUG DEPTH	OPERATION	ITEM	QUAN.	UNIT PRICE	DISC. PRICE
1			P - 5K Packoff	each	1		
2		7009'	P - Plug or Retainer - setting (3rd party)	each	1		
3		7009'	P - Dump Bailer (2 sxs Cement)	per run	1		
4		6754'	P - Plug or Retainer - setting (3rd party)	each	1		
5		6754'	P - Dump Bailer (2 sxs Cement)	per run	1		
6	CBL - 3600'-0'		P - Radial Cement Bond Log (2000'-6000')	each	1		
7	Cut - 3000'		P - Jet Cutters (all)	each	1		
8							
9							
10							
11							
12							
13							
14							
15							
16							
17							
18							
19							
20							
21							
22							
23							
24							
STANDARD PRICING				TO			
Runs for this job				TO			
5				TOTAL D			
ESTIMATED TOTAL C							
SIGNATURE OF CUSTOMER OR AUTHORIZED REPRESENTATIVE				LOGS RECEIVED AT WELL		CUST. IN	
				Hector			
						WIRELINE ENGINEER	
						Meisner, Jacob	
CASING/TUBING RECORD		TO		PERM. DEPTH DATUM		GROUND LEVEL	
SIZE	WEIGHT	TYPE	FROM	LOG MEAS. FROM		ELEV. ABOVE PERM DATUM	
		Casing 1		WHICH IS		D.F. G.L.	
		Casing 2		Fluid Type		Fluid Weight	
		Tubing		Water Based		8.345 lbs/gal	
		Liner		Fluid Level		Variable feet	
		Drill Pipe		Bottom Hole Temperature		Degrees F	
SUREFIRE ENGINEER NAMES		Crew		WORK WITNESSED BY NAME		REMARKS	
Meisner, Jacob		Crew 1		Hector T.		District doing job: Kersey, CO	
SUREFIRE OPERATORS		Crew 2				Line of Business: Completions	
Schneider, Kyle		Crew 3				Type of Job: Vertical P and A	
Kuntz, Shane		Crew 4				Class: Vert. Domestic	
		Crew 5				District job is in: Kersey, CO	
		Crew 6				AFE#:	
						Engineer: Meisner, Jacob	
						MSA#:	