

Top - Bottom

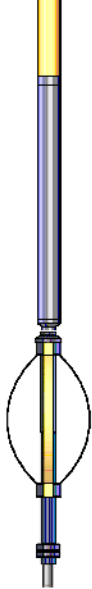
BOREID in 7.875	BOTTEMP degF 100	CASEOD in 5.5	CASETHCK in 0.275	CASEWGHT lb/ft 17	MAXAMPL mV 71.9	MINAMPL mV 1
MINATTN db/ft 0.8	PERFS 0	PPT usec 264	SRFTEMP degF 25	TDEPTH ft 0		


Variable Description

BOREID : Borehole I.D.
BOTTEMP : Bottom Hole Temperature
CASEOD : Casing O.D.
CASETHCK : Casing Thickness
CASEWGHT : Casing Weight
MAXAMPL : Maximum Amplitude

MINAMPL : Minimum Amplitude
MINATTN : Minimum Attenuation
PERFS : Perforation Flag
PPT : Predicted Pipe Time
SRFTEMP : Surface Temperature
TDEPTH : Total Depth

Sensor	Offset (ft)	Schematic	Description	Length (ft)	O.D. (in)	Weight (lb)
			Cable Head-Titan_144 1 7/16" Titan Cable Head	1.03	1.44	2.00
			Centralizer-275 Probe 2 3/4" Probe Adjustable Spring Centralizer	2.88	2.75	15.00
			PROBE-RBT-DIGITAL-RBL-DC (FW1401-48.75 Probe 2 3/4" Radii Bond-Corrosion Package	48.75	2.75	100.00
WVFS8	14.76					
WVFS7	14.76					
WVFS6	14.76					
WVFS5	14.76					
WVFS4	14.76					
WVFS3	14.76					
WVFS2	14.76					
WVFS1	14.76					
WVFCAL	14.76					
WV3FT	14.76					
WV5FT	13.76					
HEADVOLT	10.57					
			Centralizer-275 Probe 2 3/4" Probe Adjustable Spring Centralizer	2.88	2.75	15.00

CCL	6.78		PROBE-GR/CCL-ANALOG-GR/CCL-A (1104.54 2 3/4" Gamma with CCL-Analog	1104.54	2.75	60.00
GR	4.05		Centralizer-275 Probe 2 3/4" Probe Adjustable Spring Centralizer	2.88	2.75	15.00
			Bullnose-Titan GO Pin Pressure Cap	0.27	1.38	1.00
Dataset: anadarko_uprr 38 pan am o true 2_0512311055_20200203_scbl.db: field/well/run1/pass1.8 Total length: 23.23 ft Total weight: 208.00 lb O.D.: 2.75 in						


PIONEER

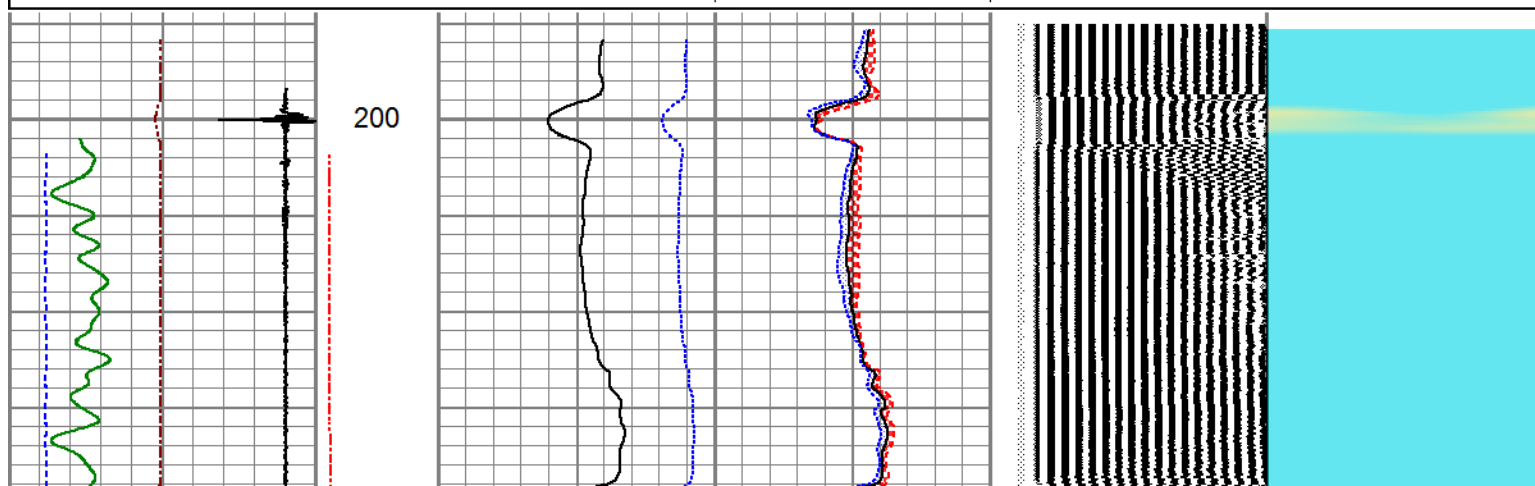
Pioneer Energy Services

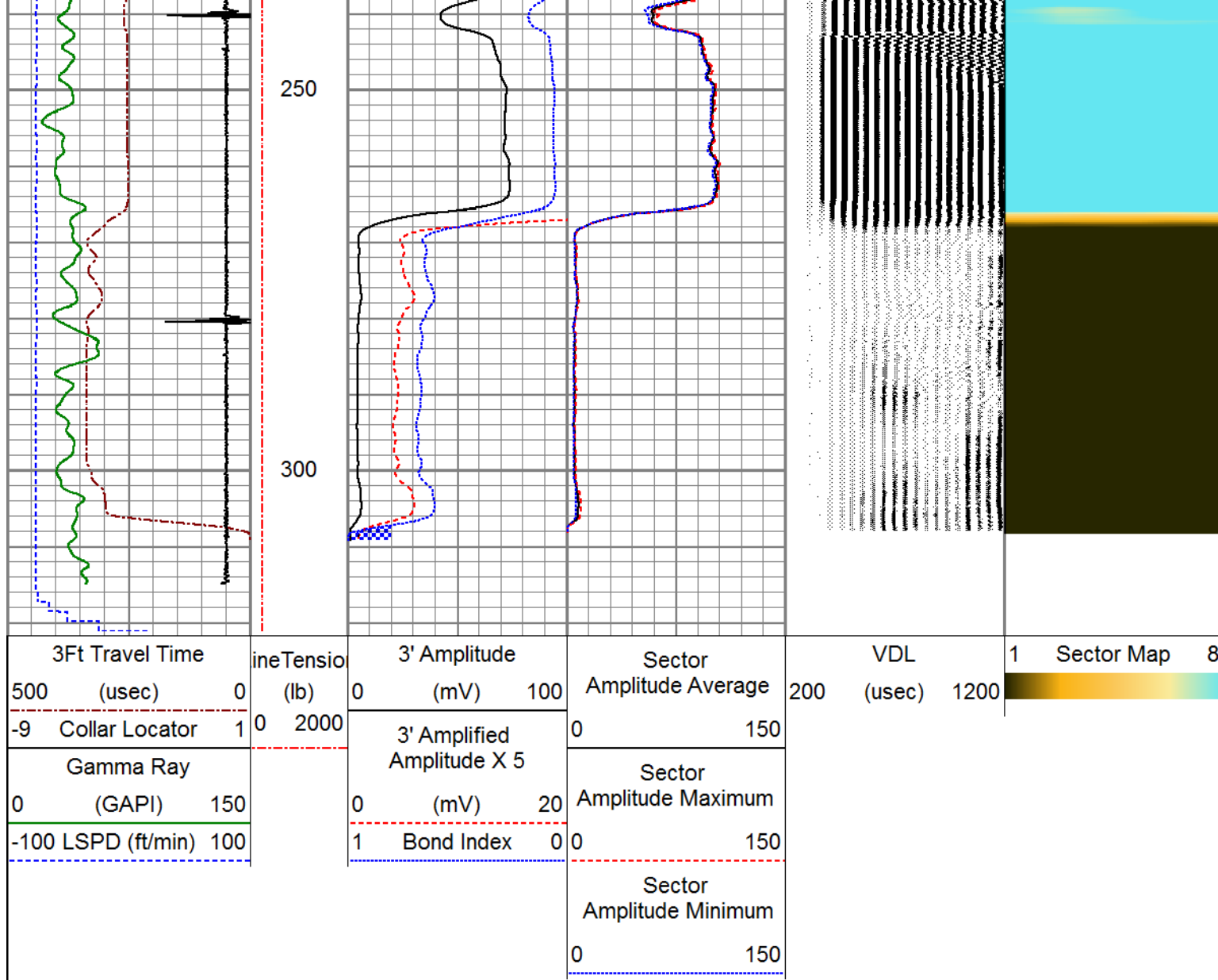
FREE PIPE SECTION


ZERO PSI APPLIED AT SURFACE

Database File anadarko_uprr 38 pan am o true 2_0512311055_20200203_scbl.db
Dataset Pathname pass1.4
Presentation Format pinr_scbl
Dataset Creation Mon Feb 03 08:00:26 2020
Charted by Depth in Feet scaled 1:240

3Ft Travel Time	ineTensio	3' Amplitude	Sector	VDL	1	Sector Map	8
500 (usec) 0	(lb)	0 (mV) 100	Amplitude Average	200 (usec) 1200			
-9 Collar Locator 1	0 2000	3' Amplified Amplitude X 5	0 150				
Gamma Ray			Sector				
0 (GAPI) 150		0 (mV) 20	Amplitude Maximum				
-100 LSPD (ft/min) 100		1 Bond Index 0	0 150				
			Sector Amplitude Minimum				
			0 150				





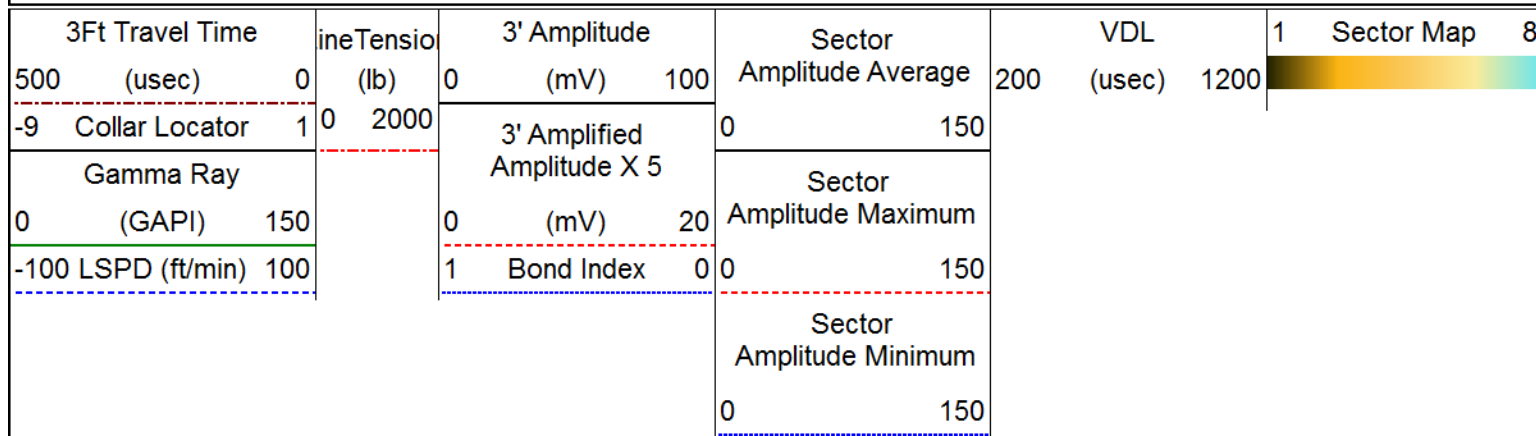


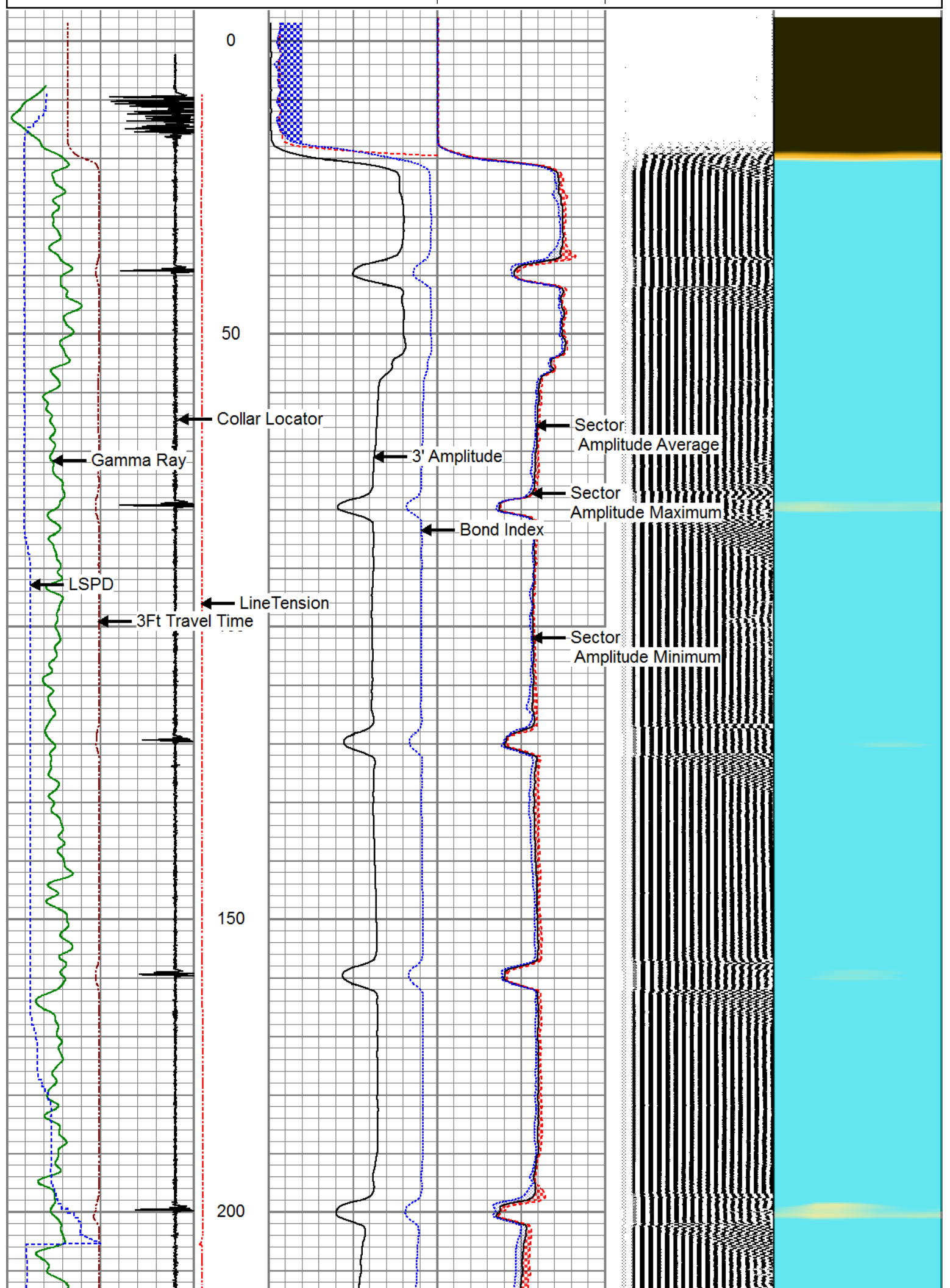
PIONEER
Pioneer Energy Services

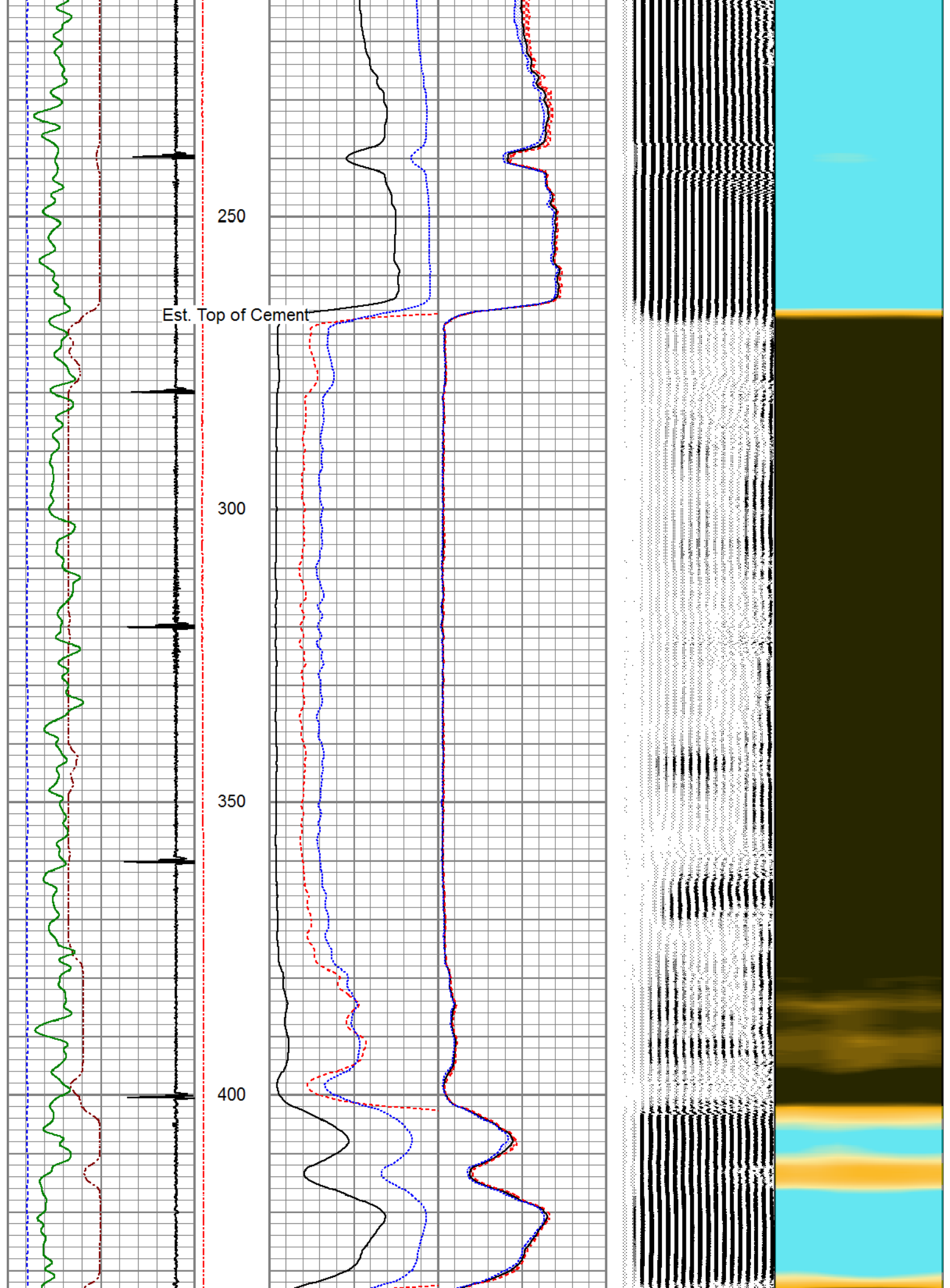
MAIN LOG

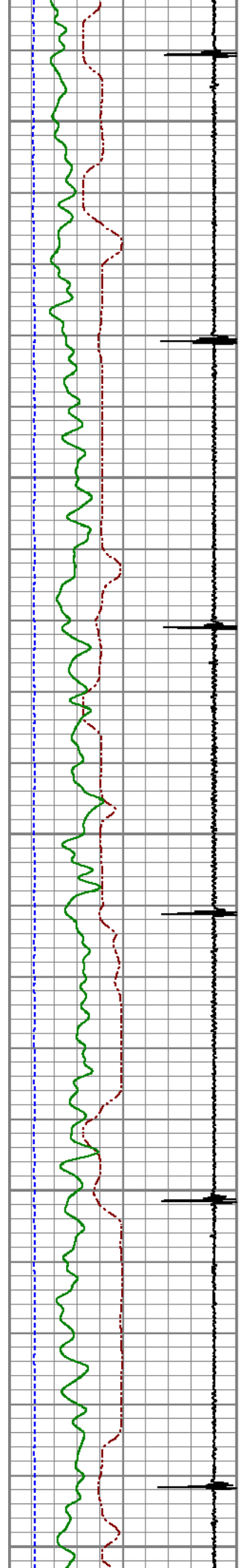
500 PSI APPLIED AT SURFACE

Database File	anadarko_uprr 38 pan am o true 2_0512311055_20200203_scbl.db
Dataset Pathname	pass1.8
Presentation Format	pinr_scbl
Dataset Creation	Mon Feb 03 08:17:30 2020
Charted by	Depth in Feet scaled 1:240









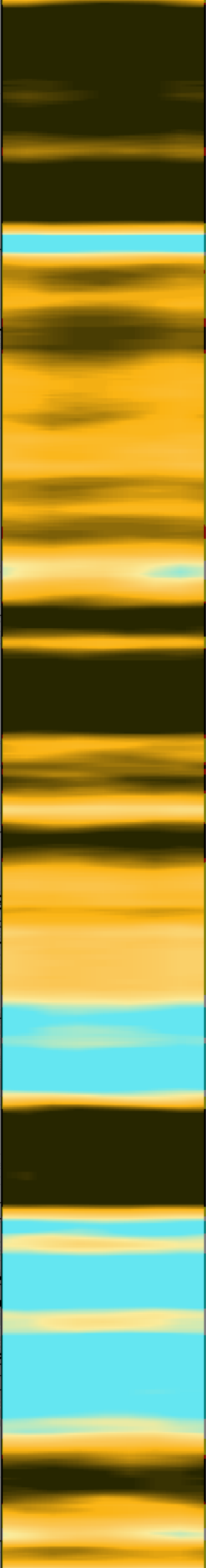
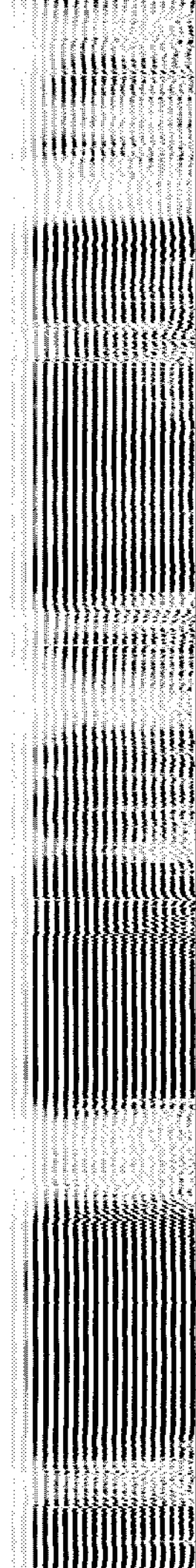
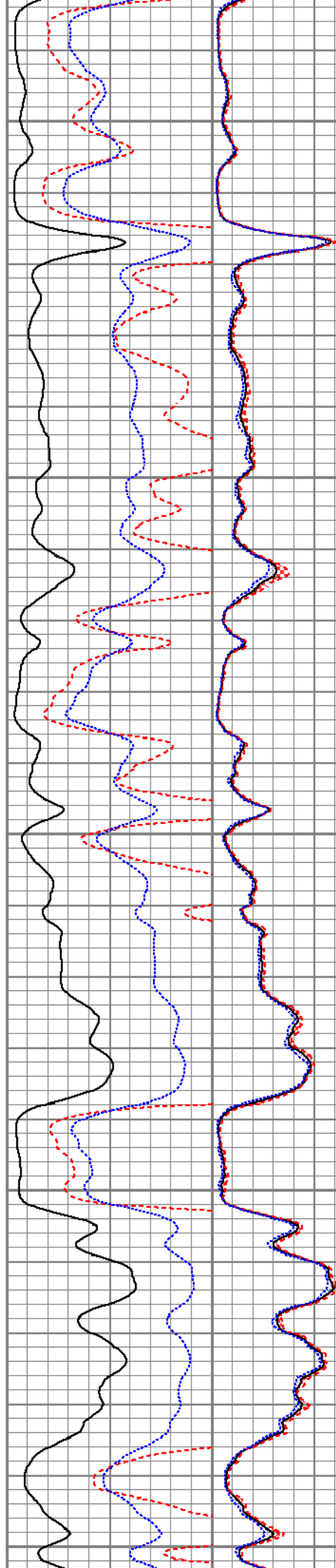
450

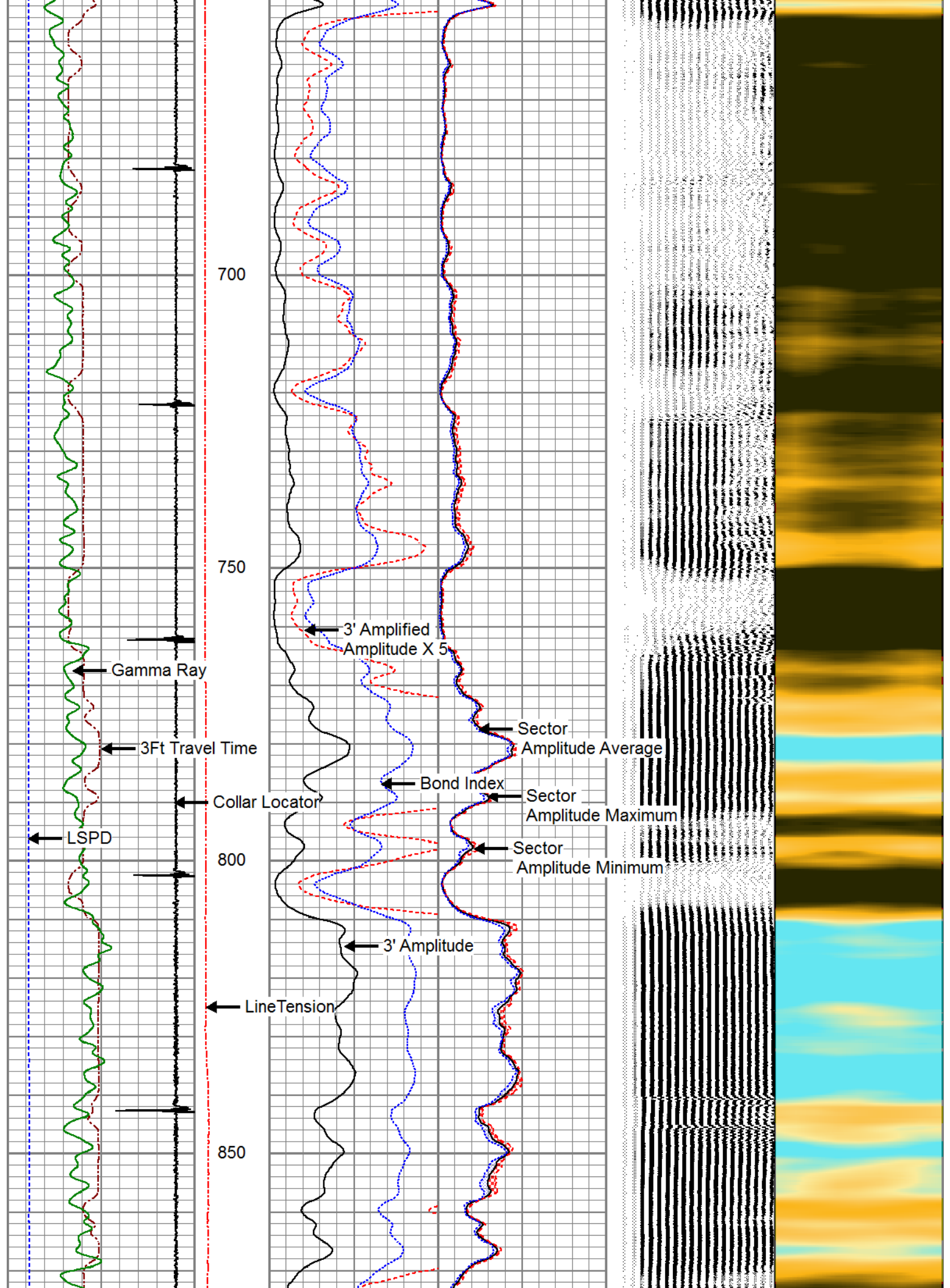
500

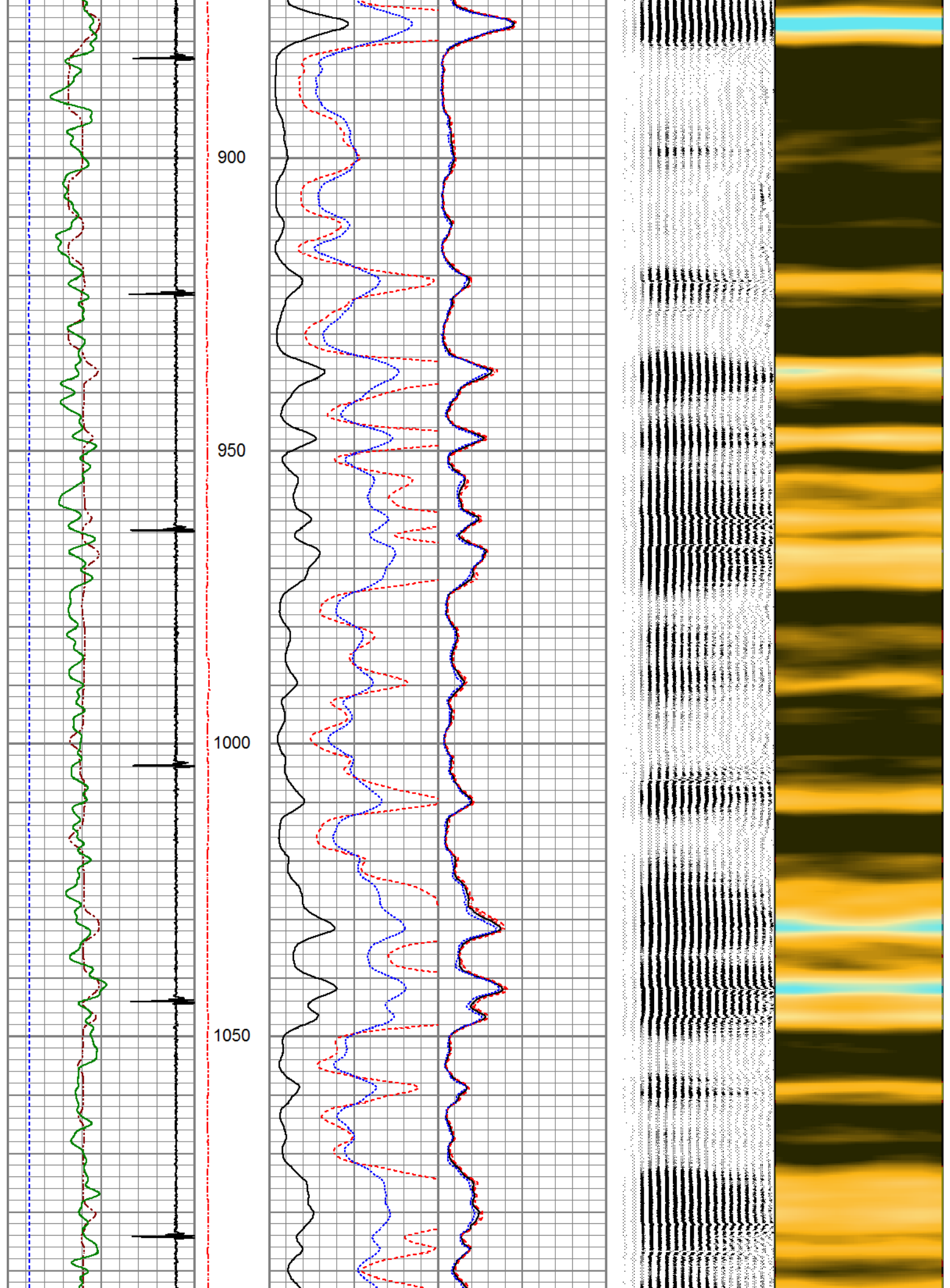
550

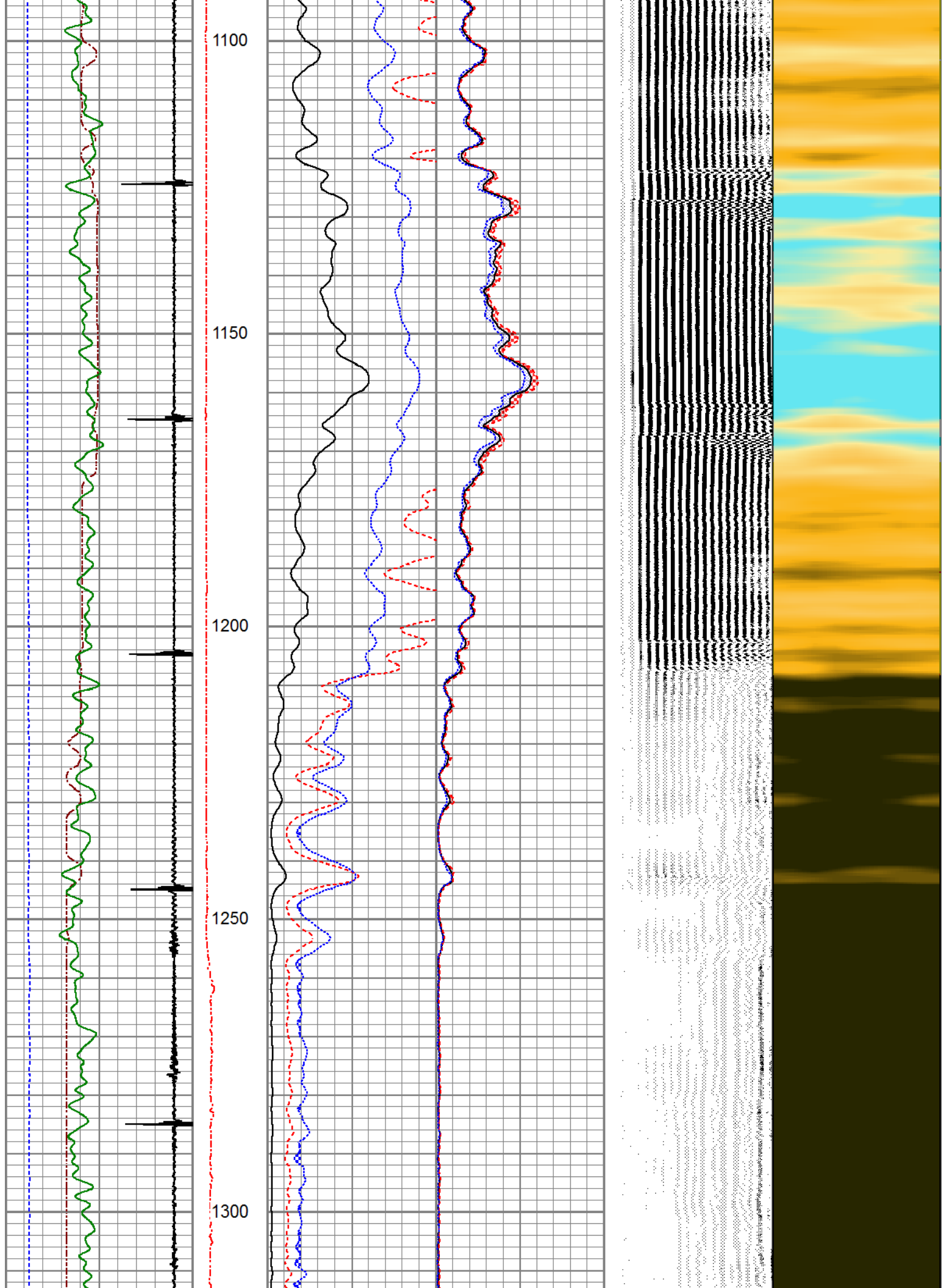
600

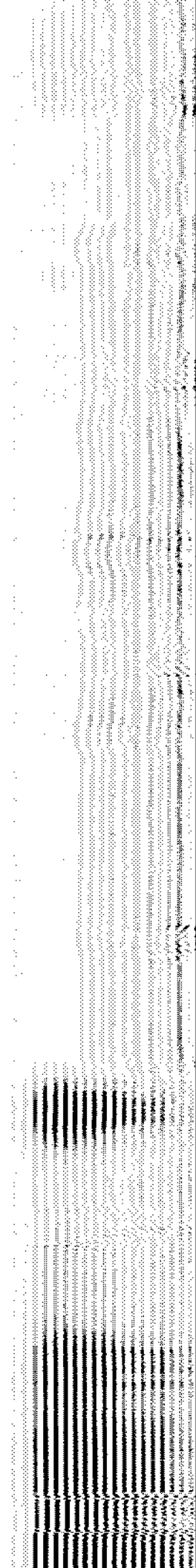
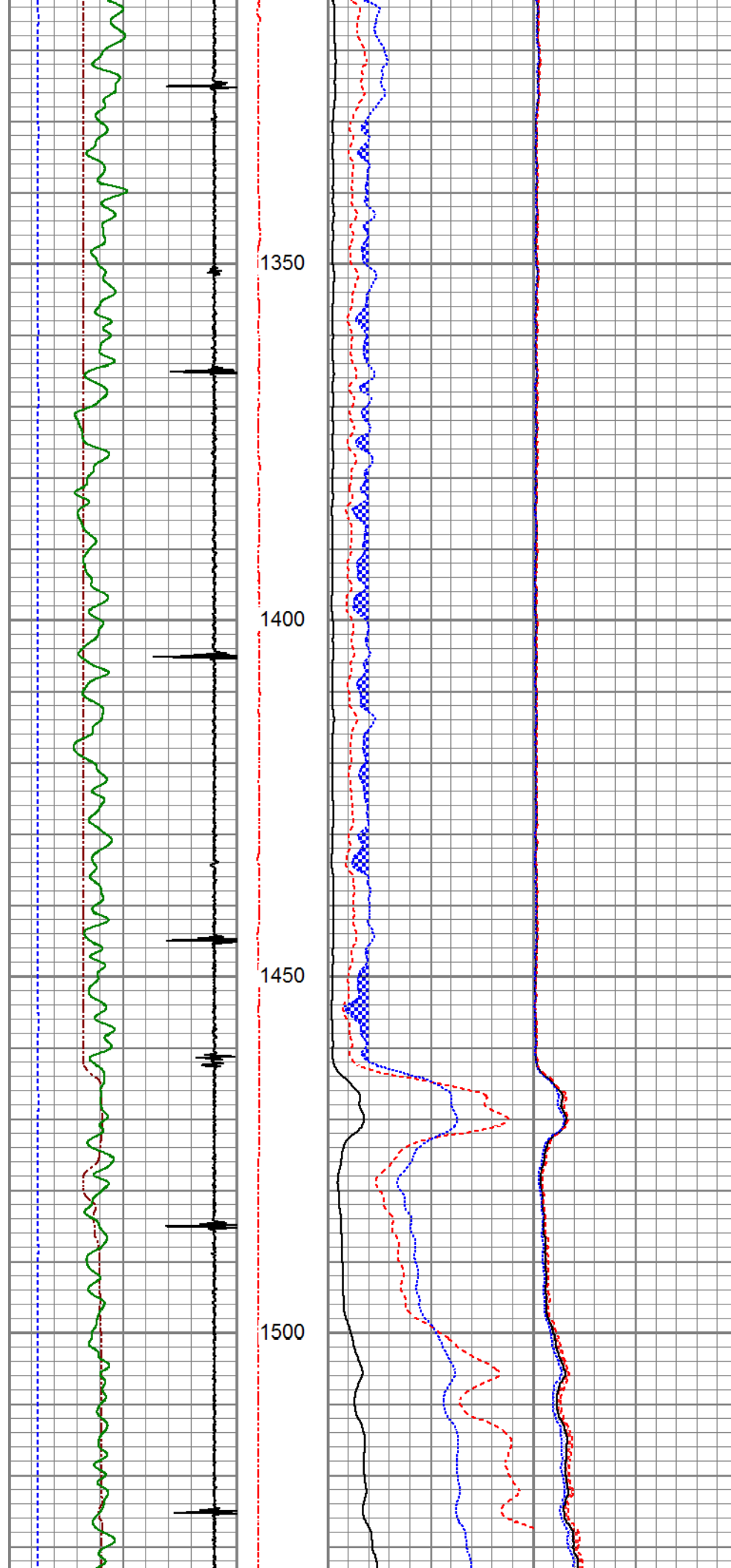
650

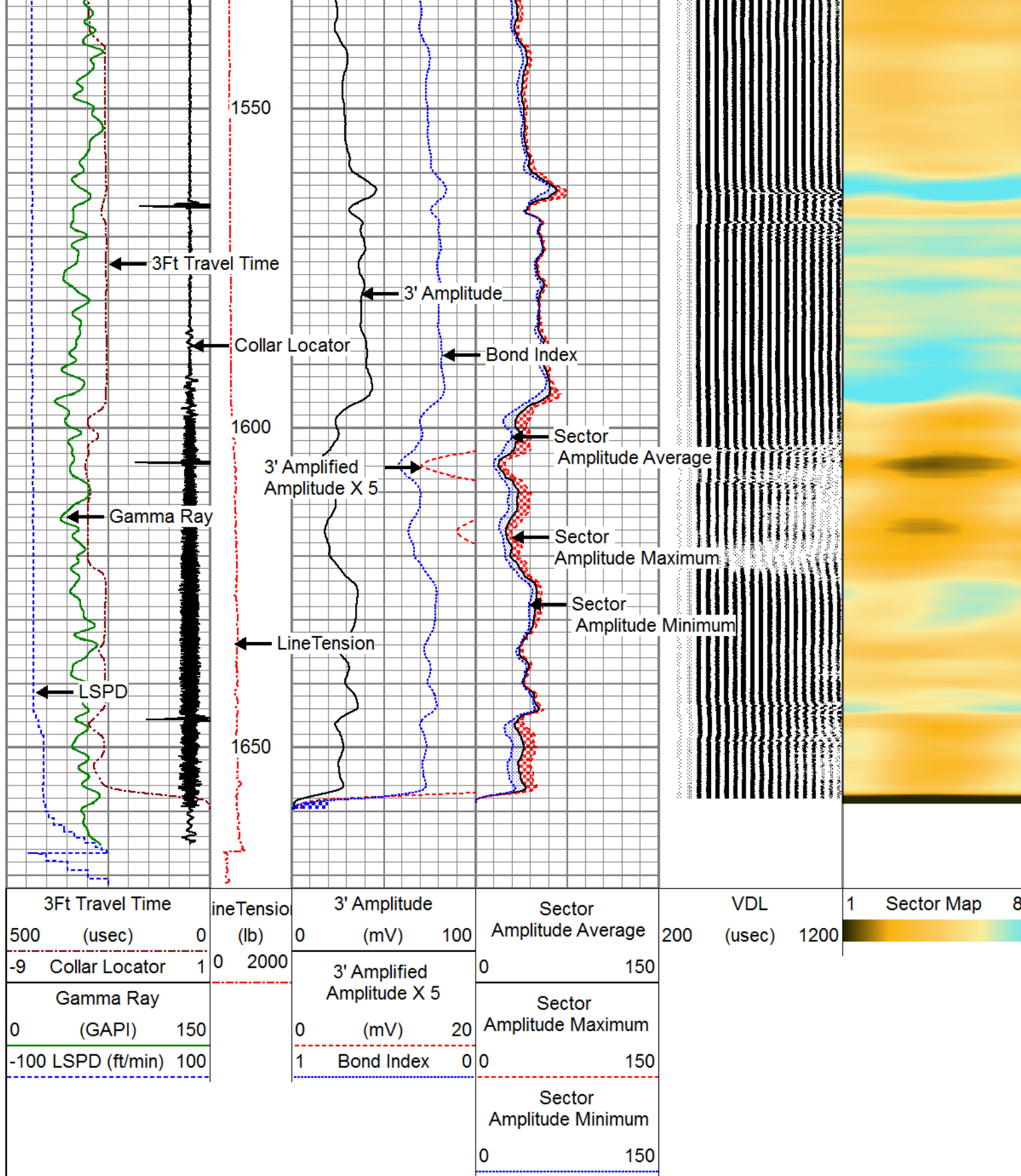










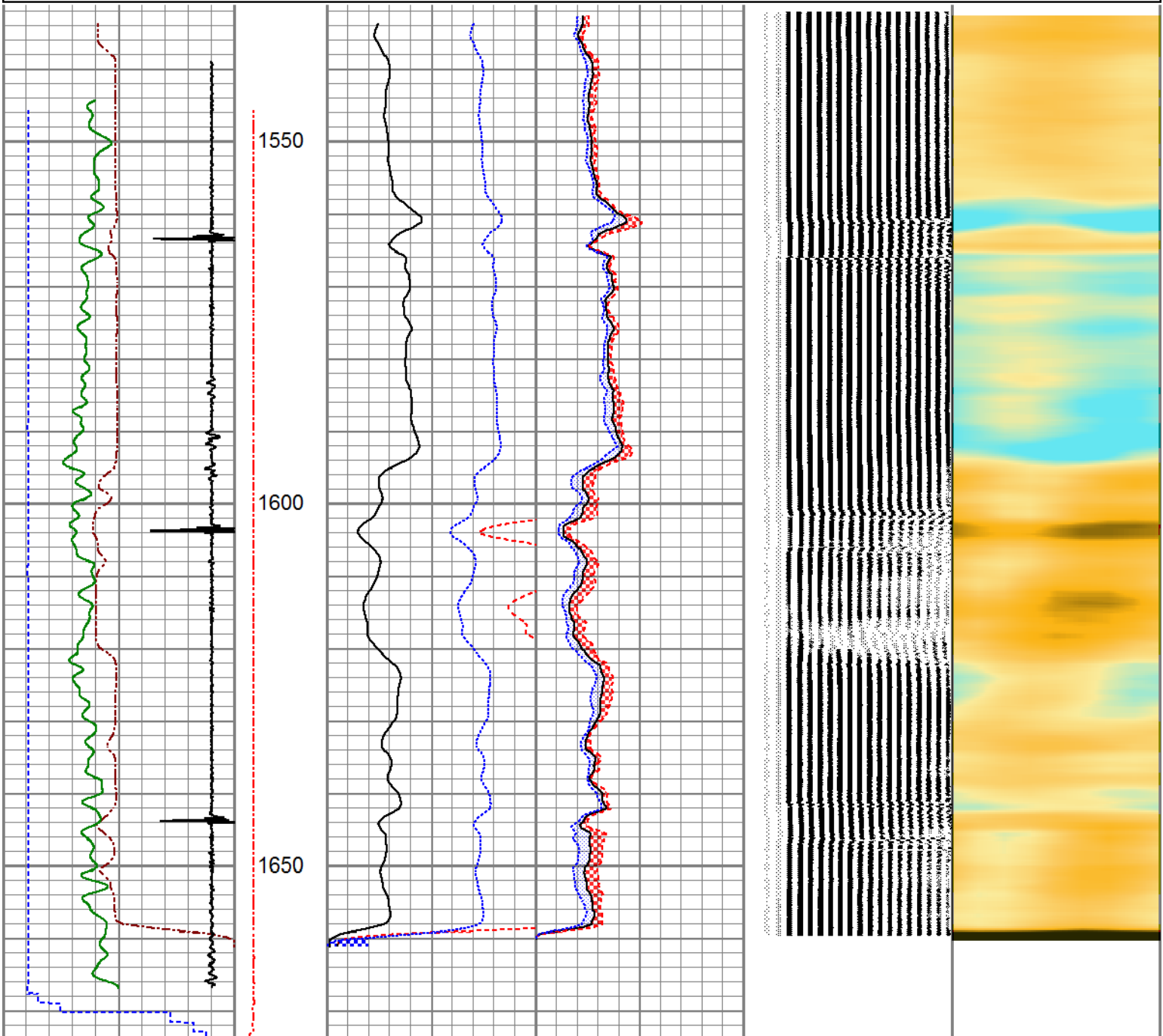


REPEAT SECTION

ZERO PSI APPLIED AT SURFACE

Database File anadarko_uprr 38 pan am o true 2_0512311055_20200203_scbl.db
 Dataset Pathname pass1.6
 Presentation Format npr_cobl

3Ft Travel Time			ineTensio (lb)	3' Amplitude		Sector		VDL		1	Sector Map	8		
500	(usec)	0		0	(mV)	100	Amplitude Average	200	(usec)	1200				
-9	Collar Locator	1		3' Amplified Amplitude X 5		0	150							
Gamma Ray						Sector								
0	(GAPI)	150		0	(mV)	20	Amplitude Maximum							
-100	LSPD (ft/min)	100		1	Bond Index	0	150							
						Sector								
						Amplitude Minimum								
						0	150							



3Ft Travel Time			ineTensio (lb)	3' Amplitude		Sector		VDL		1	Sector Map	8		
500	(usec)	0		0	(mV)	100	Amplitude Average	200	(usec)	1200				
-9	Collar Locator	1		3' Amplified Amplitude X 5		0	150							
Gamma Ray				3' Amplified Amplitude X 5		Sector								

0	(GAPI)	150	0	(mV)	20	Amplitude Maximum
-100	LSPD (ft/min)	100	1	Bond Index	0	0 150
						Sector Amplitude Minimum
						0 150

		Calibration Report
Database File	anadarko_uprr 38 pan am o true 2_0512311055_20200203_scbl.db	
Dataset Pathname	pass1.8	
Dataset Creation	Mon Feb 03 08:17:30 2020	

Gamma Ray Calibration Report		
Serial Number:	110246	
Tool Model:	GR/CCL-A	
Performed:	Mon Sep 09 12:21:39 2019	
Calibrator Value:	1.0	GAPI
Background Reading:	0.0	cps
Calibrator Reading:	1.0	cps
Sensitivity:	0.6660	GAPI/cps

Segmented Cement Bond Log Calibration Report		
Serial Number:	FW1401-41-T	
Tool Model:	RBL-DC	
Calibration Casing Diameter:	5.500	in
Calibration Depth:	257.618	ft

Master Calibration, performed Mon Feb 03 07:59:25 2020:						
	Raw (v)		Calibrated (mv)		Results	
	Zero	Cal	Zero	Cal	Gain	Offset
3'	0.000	1.162	1.000	71.921	61.032	1.000
CAL	0.000	1.504				
5'	0.000	1.160	1.000	71.921	61.114	1.000
SUM						
S1	0.000	1.094	0.000	100.000	91.407	0.000
S2	0.000	1.136	0.000	100.000	87.994	0.000
S3	0.000	1.180	0.000	100.000	84.718	0.000
S4	0.000	1.195	0.000	100.000	83.658	0.000
S5	0.000	1.184	0.000	100.000	84.465	0.000
S6	0.000	1.152	0.000	100.000	86.843	0.000
S7	0.000	1.133	0.000	100.000	88.265	0.000
S8	0.000	1.115	0.000	100.000	89.672	0.000

Air Zero Calibration, performed Thu Nov 29 15:24:07 2018:			
	Raw (v)	Calibrated (v)	Results
	Zero	Zero	Offset
3'	0.000	0.000	0.000
5'	0.000	0.000	0.000
SUM			

S1	0.000	0.000	0.000
S2	0.000	0.000	0.000
S3	0.000	0.000	0.000
S4	0.000	0.000	0.000
S5	0.000	0.000	0.000
S6	0.000	0.000	0.000
S7	0.000	0.000	0.000
S8	0.000	0.000	0.000



Company	ANADARKO PETROLEUM CORP.
Well	UPRR 38 PAN AM O TRUE 2
Field	WATTENBERG
County	WELD
State	COLORADO