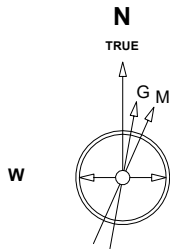


# Great Western Operating Company, LLC

Location	Colorado	Slot	S15 - Postle IC 09-299HN
Field	Wattenburg	Well	Postle IC 09-299HN
Installation	Postle West	Wellbore	Postle IC 09-299HN (AWB)

Created by	admin
Date plotted	22-May-2018
Plot reference is Postle IC 09-299HN (AWB).	
Ref wellpath is Postle IC 09-299HN (AWP#1).	
Coordinates are in Feet reference S15 - Postle IC 09-299HN.	
True Vertical Depths are reference Rig Datum.	
Measured Depths are reference Rig Datum.	
Rig Datum: Actual Datum #1	
Rig Datum to Mean Sea Level: 4996.90 ft.	
Plot North is aligned to TRUE North.	



Scale 1 cm = 400 ft

East (Feet) ->

-13600 -12800 -12000 -11200 -10400 -9600 -8800 -8000 -7200 -6400 -5600 -4800 -4000 -3200 -2400 -1600 -800 0 800 1600

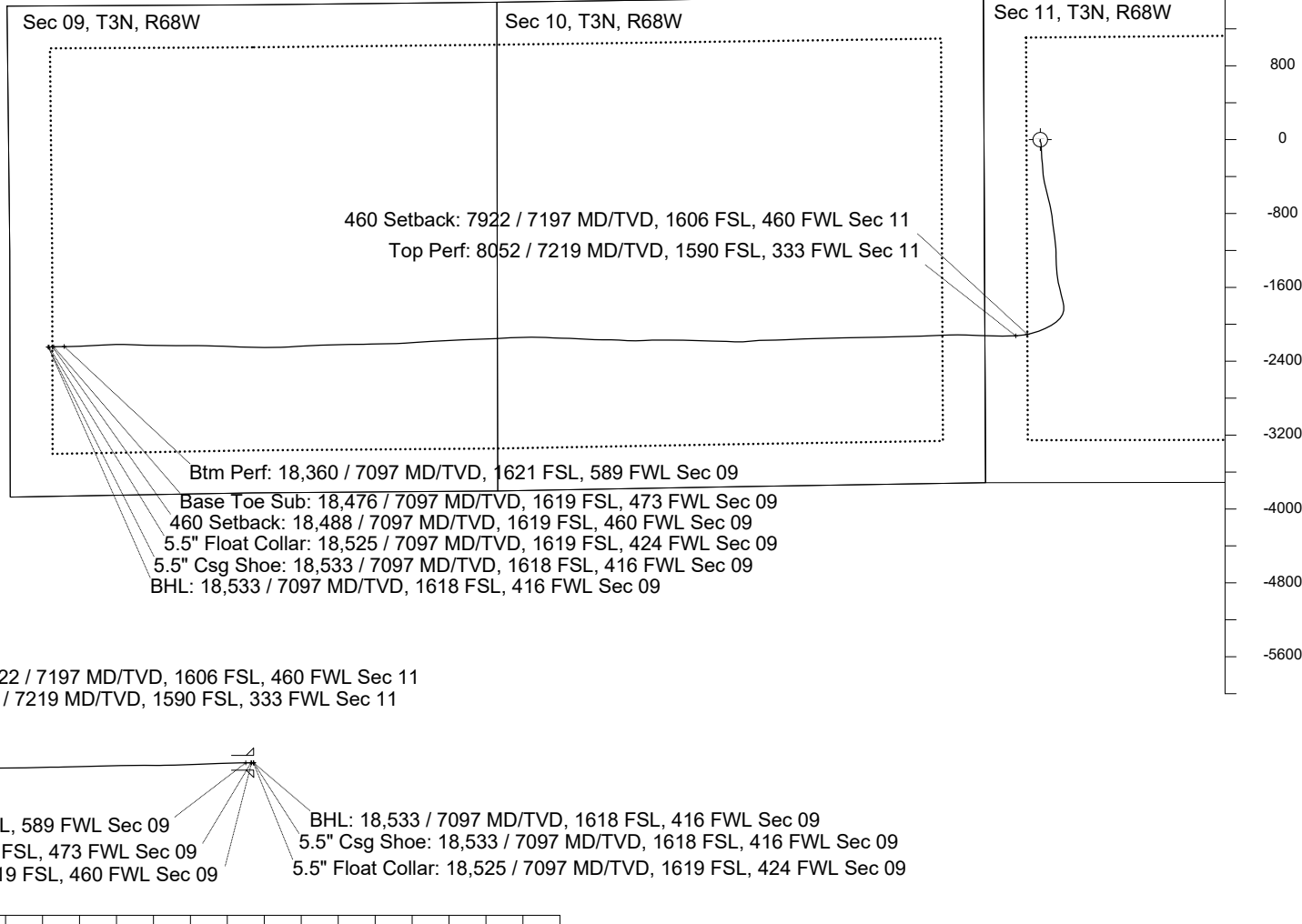
Aug-7-2014  
IGRF Model [1900.0-2020.0] Dip: 66.77 deg Field: 52617.4 nT  
Lat: N40 14 38.2488 Long: W104 58 42.6288 Elev: 4976.90 ft  
Magnetic North is 8.62 deg East of TRUE North  
To correct azimuth from Magnetic to TRUE add 8.62 deg

<- True Vertical Depth (Feet)

Scale 1 cm = 800 ft

<- North(Feet)

Scale 1 cm = 400 ft



-1600 0 1600 3200 4800 6400 8000 9600 11200 12800 14400 16000 17600

Scale 1 cm = 800 ft

Vertical Section (Feet) ->

Azimuth 258.19 with reference 0.00 N, 0.00 E from S15 - Postle IC 09-299HN

Great Western Operating Co, LLC Wellbore Survey Report Wellpath: Postle IC 09-299HN (AWP#1) MDs and TVDs are from Rig ( Actual Datum #1 4996.9ft above Mean Sea Level )
--

Wellbore Information

Date Created	Date Revised	API #	Name
Mar-22-2018	May-22-2018	05-123-46041	Postle IC 09-299HN (AWB)

Slot Coordinates

Latitude	Longitude
40.243672	-104.977598

Pad Information

Name	Ground Elev
Postle West	4976.90

Field

Name
Wattenburg

Wellpath Report

MD[ft]	Inc[deg]	Azi[deg]	TVD[ft]	North[ft]	East[ft]	Dogleg [deg/100ft]	Vertical Section[ft]
0.00	0.00	0.000	0.00	0.00	0.00		0.00
20.00	0.00	278.260	20.00	0.00	0.00	==>	0.00
214.00	0.40	278.260	214.00	0.10	-0.67	0.21	0.64
309.00	0.53	190.460	309.00	-0.29	-1.08	0.69	1.11
405.00	0.57	197.750	404.99	-1.18	-1.30	0.08	1.52
500.00	0.53	133.770	499.99	-1.93	-1.13	0.61	1.50
596.00	1.27	165.500	595.98	-3.27	-0.54	0.90	1.20
691.00	0.97	188.350	690.96	-5.08	-0.40	0.56	1.43
785.00	1.32	201.090	784.94	-6.88	-0.90	0.46	2.29
880.00	1.23	184.300	879.92	-8.92	-1.37	0.40	3.17
976.00	1.05	162.070	975.90	-10.78	-1.18	0.49	3.36
1070.00	0.92	152.140	1069.88	-12.27	-0.56	0.23	3.06
1165.00	0.48	178.420	1164.88	-13.34	-0.19	0.56	2.92
1260.00	0.57	185.710	1259.87	-14.21	-0.23	0.12	3.13
1449.00	0.40	210.500	1448.87	-15.71	-0.66	0.14	3.86
1528.00	0.53	225.880	1527.86	-16.21	-1.06	0.23	4.36
1617.00	0.00	98.430	1616.86	-16.49	-1.36	0.60	4.70
1706.00	0.04	316.790	1705.86	-16.47	-1.38	0.04	4.72
1796.00	0.15	45.870	1795.86	-16.37	-1.31	0.17	4.64
1885.00	0.28	27.070	1884.86	-16.09	-1.13	0.16	4.40
1975.00	0.49	79.860	1974.86	-15.83	-0.65	0.43	3.88
2064.00	0.37	141.230	2063.86	-15.98	-0.10	0.51	3.37
2153.00	0.25	125.220	2152.86	-16.32	0.24	0.17	3.11
2243.00	0.13	77.720	2242.86	-16.41	0.50	0.21	2.87
2332.00	0.24	150.170	2331.86	-16.55	0.69	0.27	2.71
2421.00	0.07	44.700	2420.86	-16.68	0.82	0.30	2.61
2511.00	0.06	260.900	2510.86	-16.64	0.82	0.14	2.61
2600.00	0.07	92.960	2599.86	-16.65	0.82	0.15	2.60
2689.00	0.06	227.230	2688.86	-16.69	0.84	0.13	2.59
2779.00	0.06	203.700	2778.86	-16.76	0.79	0.03	2.66
2868.00	0.06	343.460	2867.86	-16.76	0.76	0.13	2.69
2958.00	0.09	239.690	2957.86	-16.75	0.68	0.13	2.76
3047.00	0.09	284.930	3046.86	-16.77	0.56	0.08	2.89
3137.00	1.89	160.920	3136.84	-18.15	0.97	2.16	2.77
3226.00	4.49	159.200	3225.69	-22.80	2.69	2.92	2.04
3316.00	7.42	163.000	3315.20	-31.65	5.64	3.28	0.96
3405.00	9.53	169.120	3403.22	-44.38	8.71	2.58	0.56
3494.00	13.04	174.690	3490.49	-61.62	11.03	4.13	1.82
3584.00	15.34	180.310	3577.74	-83.64	11.91	2.98	5.47
3673.00	19.50	181.180	3662.64	-110.28	11.54	4.68	11.29
3763.00	21.88	176.090	3746.84	-142.03	12.37	3.31	16.97
3852.00	24.45	173.780	3828.66	-176.89	15.50	3.06	21.05
3941.00	27.88	175.270	3908.53	-215.95	19.21	3.92	25.41
4031.00	28.02	175.210	3988.03	-257.99	22.71	0.16	30.59
4120.00	29.99	177.060	4065.87	-301.04	25.60	2.43	36.58
4210.00	29.96	175.440	4143.83	-345.91	28.54	0.90	42.89
4299.00	30.15	173.440	4220.86	-390.27	32.86	1.15	47.74
4389.00	30.10	169.830	4298.71	-434.94	39.43	2.01	50.46
4478.00	29.92	167.050	4375.79	-478.54	48.34	1.58	50.66
4568.00	29.89	165.160	4453.81	-522.09	59.12	1.05	49.04
4657.00	29.98	166.940	4530.93	-565.19	69.82	1.00	47.38
4747.00	29.92	166.990	4608.92	-608.96	79.96	0.07	46.42
4836.00	29.91	165.900	4686.06	-652.11	90.36	0.61	45.08
4925.00	29.79	165.760	4763.25	-695.06	101.20	0.16	43.26
5014.00	29.90	168.110	4840.45	-738.20	111.21	1.32	42.29
5104.00	29.90	170.560	4918.47	-782.28	119.51	1.36	43.19
5193.00	29.88	172.480	4995.64	-826.14	126.05	1.08	45.77
5282.00	30.03	173.890	5072.75	-870.26	131.32	0.81	49.65
5372.00	30.25	172.240	5150.58	-915.12	136.78	0.95	53.49
5461.00	30.19	171.580	5227.49	-959.47	143.09	0.38	56.40
5551.00	30.26	172.100	5305.25	-1004.32	149.52	0.30	59.29
5640.00	30.07	173.880	5382.20	-1048.70	154.98	1.03	63.03
5730.00	30.12	173.230	5460.07	-1093.54	160.04	0.37	67.25
5819.00	30.33	173.320	5536.97	-1138.04	165.29	0.24	71.23
5909.00	30.21	176.710	5614.71	-1183.21	169.23	1.90	76.62
5998.00	29.21	180.880	5692.01	-1227.29	170.18	2.58	84.71
6088.00	30.10	180.450	5770.22	-1271.81	169.67	1.02	94.33
6177.00	30.25	175.750	5847.17	-1316.49	171.15	2.66	102.03
6267.00	30.12	173.360	5924.97	-1361.53	175.45	1.34	107.05
6356.00	30.15	176.400	6001.95	-1406.02	179.43	1.72	112.26
6445.00	30.12	177.220	6078.92	-1450.63	181.92	0.46	118.96
6535.00	30.36	173.310	6156.68	-1495.78	185.66	2.20	124.53
6624.00	30.39	167.720	6233.48	-1540.13	193.07	3.18	126.36

MD[ft]	Inc[deg]	Azi[deg]	TVD[ft]	North[ft]	East[ft]	Dogleg [deg/100ft]	Vertical Section[ft]
6713.00	30.24	164.640	6310.32	-1583.74	203.80	1.75	124.79
6803.00	30.26	167.270	6388.07	-1627.71	214.80	1.47	123.03
6892.00	30.35	167.430	6464.90	-1671.53	224.63	0.14	122.38
6981.00	30.28	164.570	6541.74	-1715.11	235.50	1.62	120.66
7071.00	29.99	166.760	6619.58	-1758.88	246.69	1.26	118.67
7160.00	29.92	173.110	6696.71	-1802.58	254.45	3.56	120.03
7250.00	30.31	186.190	6774.64	-1847.49	254.69	7.29	128.98
7339.00	33.08	204.570	6850.54	-1892.02	242.14	11.25	150.39
7428.00	37.76	219.750	6923.19	-1935.17	214.54	11.16	186.23
7518.00	43.66	231.150	6991.48	-1975.93	172.63	10.53	235.60
7607.00	49.91	239.510	7052.45	-2012.55	119.27	9.80	295.33
7697.00	57.37	245.790	7105.80	-2045.63	54.90	10.01	365.10
7786.00	64.07	250.490	7149.32	-2074.41	-17.11	8.82	441.49
7876.00	71.33	255.250	7183.47	-2098.82	-96.63	9.43	524.32
7922.07	75.04	258.120	7196.79	-2108.96	-139.53	10.02	568.39
7965.00	78.53	260.700	7206.61	-2116.64	-180.61	10.02	610.17
8052.00	85.65	267.480	7218.59	-2125.46	-266.22	11.25	695.77
8055.00	85.90	267.710	7218.81	-2125.58	-269.21	11.25	698.72
8144.00	89.91	271.270	7222.06	-2126.37	-358.11	6.02	785.90
8234.00	90.00	269.640	7222.13	-2125.65	-448.11	1.81	873.84
8323.00	89.91	270.070	7222.20	-2125.88	-537.11	0.49	961.00
8412.00	89.88	272.080	7222.36	-2124.21	-626.09	2.26	1047.76
8502.00	90.00	272.680	7222.46	-2120.47	-716.01	0.68	1135.01
8591.00	90.22	272.230	7222.29	-2116.66	-804.92	0.56	1221.26
8681.00	89.08	270.670	7222.84	-2114.38	-894.89	2.15	1308.85
8770.00	89.23	268.300	7224.15	-2115.18	-983.87	2.67	1396.11
8859.00	89.35	266.910	7225.25	-2118.90	-1072.78	1.57	1483.90
8949.00	90.18	267.080	7225.62	-2123.62	-1162.66	0.94	1572.84
9038.00	90.22	266.840	7225.31	-2128.34	-1251.53	0.27	1660.80
9128.00	90.52	268.360	7224.73	-2132.11	-1341.45	1.72	1749.58
9217.00	90.31	269.790	7224.09	-2133.54	-1430.43	1.62	1836.97
9306.00	89.88	269.240	7223.94	-2134.30	-1519.43	0.78	1924.24
9396.00	89.66	268.670	7224.30	-2135.94	-1609.41	0.68	2012.65
9485.00	91.20	269.470	7223.63	-2137.38	-1698.40	1.95	2100.05
9575.00	91.23	268.640	7221.72	-2138.87	-1788.36	0.92	2188.41
9664.00	91.11	269.250	7219.91	-2140.51	-1877.33	0.70	2275.83
9754.00	91.20	268.570	7218.09	-2142.22	-1967.29	0.76	2364.24
9843.00	90.99	268.620	7216.39	-2144.40	-2056.25	0.24	2451.76
9933.00	91.05	268.610	7214.79	-2146.57	-2146.21	0.07	2540.25
10022.00	89.88	268.530	7214.07	-2148.80	-2235.18	1.32	2627.79
10111.00	90.03	267.680	7214.14	-2151.74	-2324.13	0.97	2715.46
10200.00	89.82	267.390	7214.25	-2155.57	-2413.04	0.40	2803.28
10290.00	89.91	268.350	7214.46	-2158.91	-2502.98	1.07	2891.99
10379.00	90.06	267.910	7214.49	-2161.82	-2591.93	0.52	2979.66
10469.00	89.97	267.950	7214.46	-2165.07	-2681.87	0.11	3068.36
10558.00	89.75	268.080	7214.68	-2168.15	-2770.82	0.29	3156.05
10648.00	89.88	268.770	7214.97	-2170.62	-2860.79	0.78	3244.62
10737.00	89.85	269.280	7215.18	-2172.14	-2949.77	0.57	3332.03
10827.00	89.91	267.290	7215.37	-2174.83	-3039.73	2.21	3420.63
10916.00	89.72	264.380	7215.66	-2181.29	-3128.48	3.28	3508.83
11006.00	89.60	265.000	7216.19	-2189.62	-3218.09	0.70	3598.24
11095.00	89.60	274.110	7216.81	-2190.31	-3307.00	10.24	3685.40
11184.00	89.78	271.610	7217.30	-2185.87	-3395.88	2.82	3771.49
11274.00	90.34	271.450	7217.20	-2183.47	-3485.84	0.65	3859.06
11363.00	90.49	271.500	7216.56	-2181.18	-3574.81	0.18	3945.68
11453.00	90.40	272.180	7215.86	-2178.29	-3664.76	0.76	4033.13
11542.00	90.25	272.440	7215.35	-2174.70	-3753.69	0.34	4119.44
11632.00	90.00	270.510	7215.16	-2172.39	-3843.65	2.16	4207.02
11721.00	89.97	269.960	7215.18	-2172.02	-3932.65	0.62	4294.06
11810.00	89.88	270.310	7215.30	-2171.81	-4021.65	0.41	4381.13
11900.00	90.00	270.510	7215.39	-2171.17	-4111.65	0.26	4469.09
11989.00	89.69	268.670	7215.63	-2171.80	-4200.64	2.10	4556.33
12078.00	89.82	266.720	7216.01	-2175.38	-4289.57	2.20	4644.10
12168.00	89.88	268.990	7216.25	-2178.75	-4379.50	2.52	4732.82
12257.00	90.18	273.520	7216.20	-2176.80	-4468.45	5.10	4819.49
12347.00	90.00	273.800	7216.06	-2171.06	-4558.27	0.37	4906.23
12436.00	90.15	270.490	7215.94	-2167.73	-4647.19	3.72	4992.58
12525.00	90.22	268.940	7215.66	-2168.17	-4736.19	1.74	5079.79
12615.00	90.15	272.550	7215.37	-2167.00	-4826.17	4.01	5167.62
12704.00	89.97	274.130	7215.27	-2161.81	-4915.01	1.79	5253.52
12793.00	90.22	272.940	7215.12	-2156.33	-5003.84	1.37	5339.34
12883.00	90.15	271.430	7214.83	-2152.90	-5093.77	1.68	5426.67
12972.00	90.06	271.370	7214.67	-2150.72	-5182.75	0.12	5513.31
13062.00	90.18	272.460	7214.48	-2147.71	-5272.69	1.22	5600.74
13151.00	90.09	272.890	7214.27	-2143.56	-5361.60	0.49	5686.90
13240.00	91.60	271.690	7212.96	-2140.00	-5450.51	2.17	5773.21
13330.00	91.66	269.730	7210.40	-2138.89	-5540.46	2.18	5861.03
13419.00	91.66	266.910	7207.82	-2141.50	-5629.38	3.17	5948.59
13508.00	91.66	266.870	7205.24	-2146.32	-5718.21	0.04	6036.53
13598.00	91.54	266.860	7202.73	-2151.24	-5808.04	0.13	6125.46
13687.00	91.45	267.950	7200.41	-2155.27	-5896.92	1.23	6213.28
13777.00	91.57	268.160	7198.04	-2158.33	-5986.84	0.27	6301.92

MD[ft]	Inc[deg]	Azi[deg]	TVD[ft]	North[ft]	East[ft]	Dogleg [deg/100ft]	Vertical Section[ft]
13866.00	91.60	268.230	7195.57	-2161.13	-6075.76	0.09	6389.53
13956.00	90.43	267.460	7193.98	-2164.51	-6165.68	1.56	6478.24
14045.00	90.37	267.360	7193.36	-2168.53	-6254.58	0.13	6566.09
14134.00	90.55	267.140	7192.64	-2172.80	-6343.48	0.32	6653.97
14224.00	90.68	267.490	7191.68	-2177.02	-6433.37	0.41	6742.83
14313.00	90.46	267.160	7190.79	-2181.17	-6522.27	0.45	6830.69
14402.00	90.49	266.420	7190.06	-2186.16	-6611.13	0.83	6918.69
14491.00	90.58	265.870	7189.22	-2192.14	-6699.92	0.63	7006.82
14581.00	92.06	265.950	7187.15	-2198.56	-6789.67	1.65	7095.98
14670.00	92.22	266.730	7183.83	-2204.23	-6878.42	0.89	7184.02
14760.00	92.22	267.570	7180.34	-2208.71	-6968.24	0.93	7272.85
14849.00	92.22	269.500	7176.89	-2210.98	-7057.14	2.17	7360.33
14939.00	91.97	269.090	7173.60	-2212.09	-7147.08	0.53	7448.59
15028.00	92.25	268.110	7170.33	-2214.26	-7235.99	1.14	7536.06
15117.00	92.28	268.140	7166.81	-2217.17	-7324.87	0.05	7623.66
15207.00	91.94	269.980	7163.50	-2218.64	-7414.80	2.08	7711.98
15296.00	90.40	269.470	7161.68	-2219.07	-7503.77	1.82	7799.16
15386.00	90.31	268.980	7161.12	-2220.29	-7593.76	0.55	7887.49
15475.00	90.37	268.310	7160.59	-2222.39	-7682.74	0.76	7975.01
15565.00	90.43	267.320	7159.96	-2225.82	-7772.67	1.10	8063.74
15654.00	92.06	267.910	7158.03	-2229.53	-7861.57	1.95	8151.51
15743.00	90.68	266.900	7155.90	-2233.55	-7950.45	1.92	8239.33
15833.00	90.28	266.240	7155.15	-2238.94	-8040.28	0.86	8328.37
15922.00	90.12	266.750	7154.84	-2244.38	-8129.11	0.60	8416.43
16011.00	90.31	268.170	7154.50	-2248.32	-8218.02	1.61	8504.26
16101.00	90.25	269.300	7154.06	-2250.31	-8308.00	1.26	8592.74
16190.00	90.09	269.830	7153.80	-2250.99	-8396.99	0.62	8679.99
16280.00	90.06	270.560	7153.68	-2250.68	-8486.99	0.81	8768.02
16370.00	90.31	271.870	7153.39	-2248.77	-8576.97	1.48	8855.70
16459.00	90.06	272.910	7153.10	-2245.06	-8665.89	1.20	8941.98
16548.00	90.25	272.300	7152.86	-2241.02	-8754.80	0.72	9028.17
16638.00	90.25	272.040	7152.47	-2237.61	-8844.73	0.29	9115.50
16727.00	90.22	271.010	7152.11	-2235.24	-8933.70	1.16	9202.10
16817.00	92.49	271.610	7149.98	-2233.18	-9023.64	2.61	9289.72
16906.00	92.49	271.050	7146.11	-2231.12	-9112.54	0.63	9376.30
16996.00	92.52	269.510	7142.18	-2230.68	-9202.45	1.71	9464.22
17085.00	92.49	269.490	7138.29	-2231.46	-9291.36	0.04	9551.41
17175.00	92.43	270.610	7134.42	-2231.38	-9381.27	1.25	9639.40
17264.00	92.55	270.950	7130.56	-2230.17	-9470.18	0.40	9726.18
17353.00	92.40	270.670	7126.71	-2228.91	-9559.09	0.36	9812.94
17443.00	92.43	271.470	7122.92	-2227.23	-9648.99	0.89	9900.60
17532.00	92.34	272.130	7119.22	-2224.44	-9737.87	0.75	9987.02
17622.00	91.60	271.850	7116.12	-2221.31	-9827.76	0.88	10074.37
17711.00	91.60	271.280	7113.64	-2218.88	-9916.70	0.64	10160.92
17801.00	91.29	269.520	7111.37	-2218.26	-10006.66	1.99	10248.85
17890.00	91.51	267.540	7109.19	-2220.54	-10095.60	2.24	10336.37
17979.00	91.45	265.800	7106.90	-2225.71	-10184.42	1.96	10424.37
18069.00	91.51	265.060	7104.57	-2232.88	-10274.10	0.82	10513.62
18158.00	91.48	268.180	7102.25	-2238.12	-10362.90	3.50	10601.61
18248.00	91.63	270.060	7099.81	-2239.50	-10452.86	2.09	10689.94
18337.00	91.14	269.230	7097.65	-2240.05	-10541.83	1.08	10777.14
18360.00	90.83	268.840	7097.26	-2240.44	-10564.82	2.18	10799.73
18426.00	89.94	267.710	7096.82	-2242.43	-10630.79	2.18	10864.70
18476.00	90.11	268.000	7096.79	-2244.30	-10680.75	0.67	10913.99
18488.72	90.15	268.070	7096.77	-2244.74	-10693.47	0.67	10926.53
18509.00	90.22	268.190	7096.70	-2245.40	-10713.73	0.67	10946.50
18525.00	90.22	268.190	7096.64	-2245.90	-10729.73	==>	10962.26
18533.00	90.22	268.190	7096.61	-2246.16	-10737.72	==>	10970.14

Comments				
MD[ft]	TVD[ft]	North[ft]	East[ft]	Comment
1528.00	1527.86	-16.21	-1.06	9.625" Csg Shoe: 1528 MD/TVD
7922.07	7196.79	-2108.96	-139.53	460 Setback: 7922 / 7197 MD/TVD, 1606 FSL, 460 FWL Sec 11
8052.00	7218.59	-2125.46	-266.22	Top Perf: 8052 / 7219 MD/TVD, 1590 FSL, 333 FWL Sec 11
18360.00	7097.26	-2240.44	-10564.82	Btm Perf: 18,360 / 7097 MD/TVD, 1621 FSL, 589 FWL Sec 09
18476.00	7096.79	-2244.30	-10680.75	Base Toe Sub: 18,476 / 7097 MD/TVD, 1619 FSL, 473 FWL Sec 09
18488.72	7096.77	-2244.74	-10693.47	460 Setback: 18,488 / 7097 MD/TVD, 1619 FSL, 460 FWL Sec 09
18525.00	7096.64	-2245.90	-10729.73	5.5" Float Collar: 18,525 / 7097 MD/TVD, 1619 FSL, 424 FWL Sec 09
18533.00	7096.61	-2246.16	-10737.72	5.5" Csg Shoe: 18,533 / 7097 MD/TVD, 1618 FSL, 416 FWL Sec 09
18533.00	7096.61	-2246.16	-10737.72	BHL: 18,533 / 7097 MD/TVD, 1618 FSL, 416 FWL Sec 09

Hole Sections								
Diameter [in]	Start MD[ft]	Start TVD[ft]	Start North[ft]	Start East[ft]	End MD[ft]	End TVD[ft]	End North[ft]	End East[ft]
13.500	0.00	0.00	0.00	0.00	1528.00	1527.86	-16.21	-1.06
8.500	1528.00	1527.86	-16.21	-1.06	18533.00	7096.61	-2246.16	-10737.72

Casings								
Name	Top MD[ft]	Top TVD[ft]	Top North[ft]	Top East[ft]	Shoe MD[ft]	Shoe TVD[ft]	Shoe North[ft]	Shoe East[ft]
9 5/8in Casing	0.00	0.00	0.00	0.00	1528.00	1527.86	-16.21	-1.06
5 1/2in Casing	0.00	0.00	0.00	0.00	18533.00	7096.61	-2246.16	-10737.72

Survey Tool Program					
Reference	Survey Name	MD[ft]	TVD[ft]	Survey Tool	Error Model
328111	As Drilled - 20180322	18533.00	7096.61	MWD	

Coordinates are from Slot MD's are from Rig and TVD's are from Rig ( Actual Datum #1 4996.9ft above Mean Sea Level )  
Vertical Section is from 0.00 0.00 on azimuth 258.190 degrees  
Bottom hole distance is 10970.14 Feet on azimuth 258.19 degrees from Wellhead  
Calculation method uses Minimum Curvature method  
Prepared by Great Western Operating Co.  
Date Printed: