

February 21, 2020

Ms. Kate Graves
Senior HSE Representative
Kerr-McGee Oil & Gas Onshore LP
501 N Division Blvd
Platteville, Colorado 80651

**RE: Form 4 Sundry Notice – Final Reclamation
Kerr-McGee Oil & Gas Onshore LP (Operator: 47120)
HUNZIKER 26C-4HZ, Location ID: 440427
SWSE S28-T2N-R67W
Weld County, Colorado**

Dear Ms. Graves:

LT Environmental, Inc. (LTE) was contracted by Kerr-McGee Oil & Gas Onshore LP (Kerr-McGee) to complete final reclamation inspections at plugged and abandoned (P&A) well sites located in Weld County, CO. The reclamation inspections were conducted in accordance with Colorado Oil and Gas Conservation Commission (COGCC) Rule 1004.

The former HUNZIKER 26C-4HZ well (API: 05-123-40888) was P&A'd on April 26, 2019 as identified in the Form 6, Document Number 402038863. On October 14, 2019 LTE conducted a final reclamation inspection for the HUNZIKER 26C-4HZ well pad and has determined that the site is in compliance with final reclamation requirements per COGCC Rule 1004. The former HUNZIKER 26C-4HZ well is located on an active pad (Location ID: 440427) and the associated active tank battery is located 0.06 miles south of the well pad. The former HUNZIKER 26C-4HZ well pad remains in use servicing Kerr-McGee producing wells: API: 05-123-40891; API: 05-123-40893; API: 05-123-40844; API: 05-123-40892; API: 05-123-40890; API: 05-123-40887; API: 05-123-40846; API: 05-123-40886; API: 05-123-40847; API: 05-123-40889 and API: 05-123-40845. All disturbed areas have been compacted and stabilized with road base to minimize erosion. LTE personnel located the P&A wellhead location using a handheld Trimble (R1) Global Positioning System (GPS) unit and latitude and longitude coordinates obtained from the COGCC online database. A general site location map is included as Figure 1; and the Site Map displaying the location of the reclaimed site on aerial imagery is included as Figure 2. Photographs of the P&A location were taken facing each cardinal direction from the P&A wellhead location. The photographic log is included as Attachment 1.



If you have any questions or need additional information, please do not hesitate to contact us.

Sincerely,

LT ENVIRONMENTAL, INC.

A handwritten signature in blue ink, appearing to read 'Stacey Baum'. The signature is fluid and cursive, with the first name being more prominent.

Stacey Baum
Staff Biologist

A handwritten signature in blue ink, appearing to read 'Brian Sulzberger'. The signature is fluid and cursive, with the last name being more prominent.

Brian Sulzberger, P.E.
Senior Engineer

Attachments:

- Figure 1 Site Location Map
- Figure 2 Site Map
- Attachment 1 Photographic Log



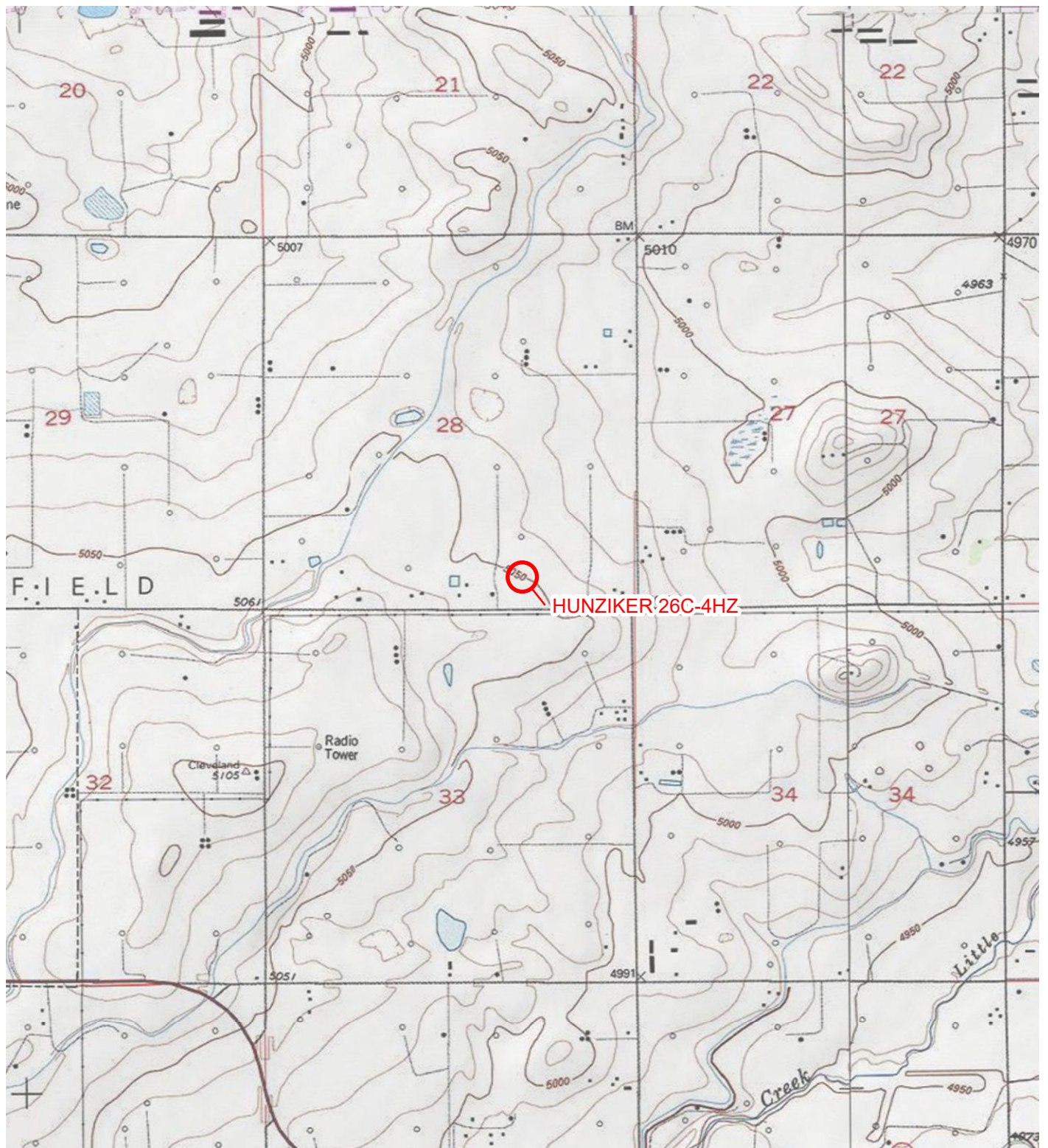
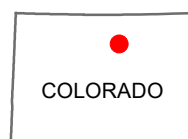


IMAGE COURTESY OF ESRI/USGS

LEGEND

○ SITE LOCATION



COLORADO

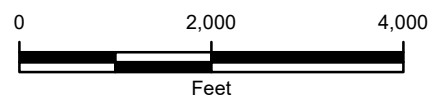


FIGURE 1
SITE LOCATION MAP
HUNZIKER 26C-4HZ
SWSE SEC 28-2N-67W
WELD COUNTY, COLORADO
KERR-MCGEE OIL & GAS ONSHORE LP



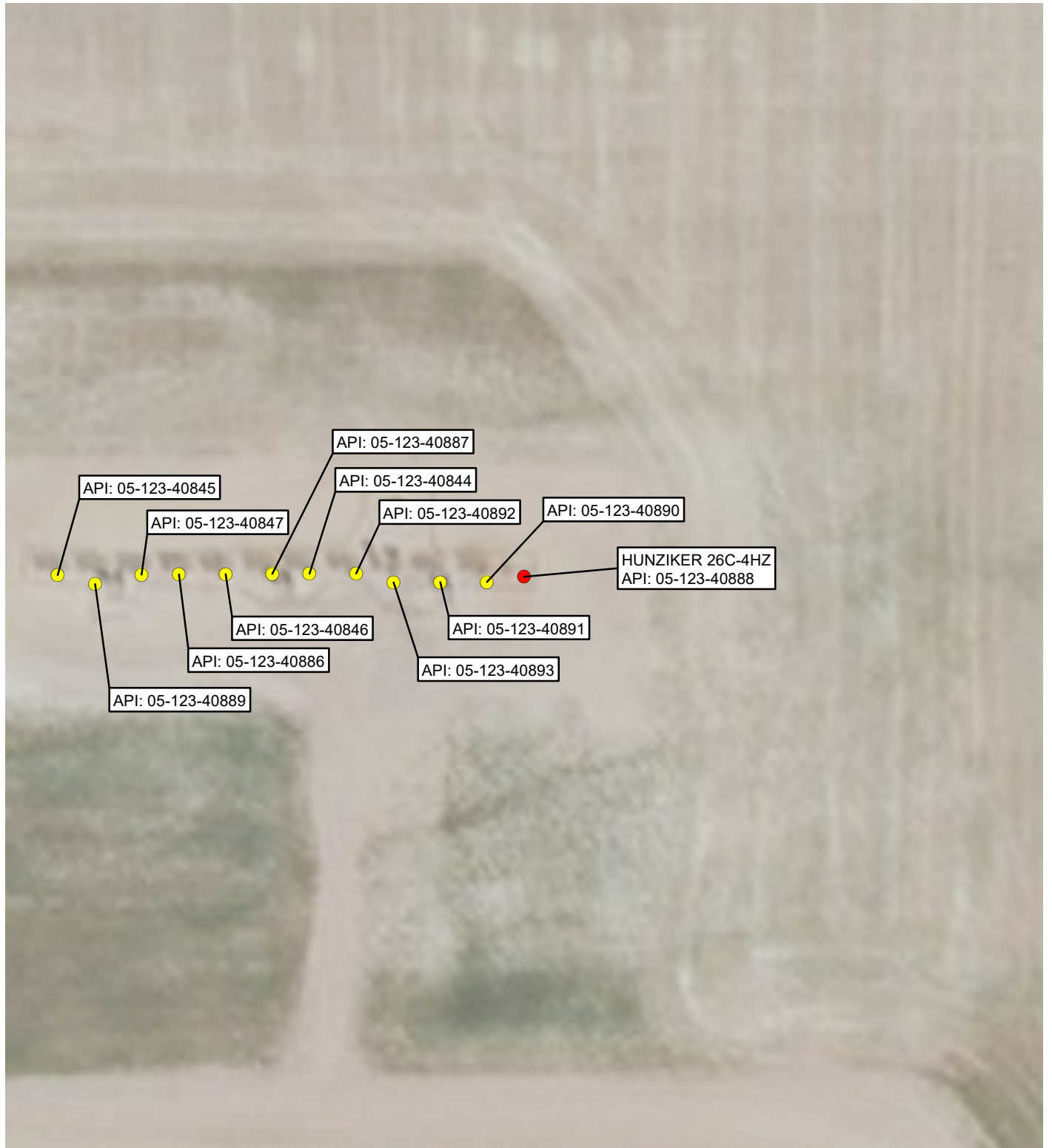


IMAGE COURTESY OF ESRI

LEGEND

- PLUGGED AND ABANDONED WELL (HUNZIKER 26C-4HZ)
- WELLHEAD

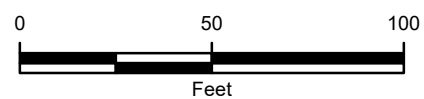


FIGURE 2
SITE MAP
HUNZIKER 26C-4HZ
SWSE SEC 28-2N-67W
WELD COUNTY, COLORADO
KERR-MCGEE OIL & GAS ONSHORE LP



PHOTOGRAPHIC LOG



Photograph 1: View facing north as required in Colorado Oil and Gas Conservation Commission (COGCC) Rule 1004.



Photograph 2: View facing east as required in COGCC Rule 1004.

PHOTOGRAPHIC LOG



Photograph 3: View facing south as required in COGCC Rule 1004.



Photograph 4: View facing west as required in COGCC Rule 1004.

PHOTOGRAPHIC LOG



Photograph 5: Overall site view per COGCC Rule 1004.