



# Crestone Peak Resources

Well Name:

**WARNER 2D-10H-E165**

Project Name:

**Sec 10 T1N-R65W**

Pad Name:

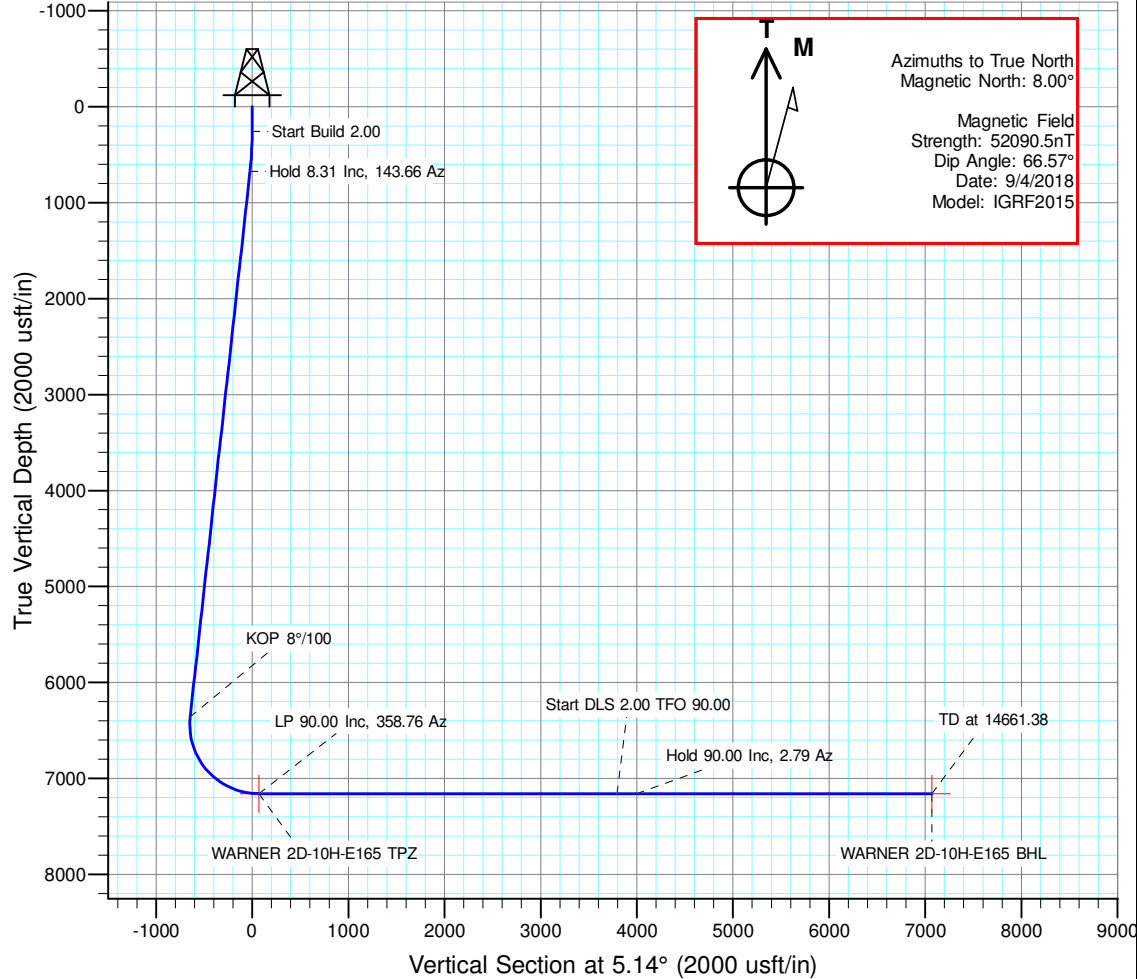
**Warner Pad**

## ANNOTATIONS

MD	Inc	Azi	TVD	+N/-S	+E/-W	VSect	Departure	Annotation
260.00	0.00	0.00	260.00	0.00	0.00	0.00	0.00	Start Build 2.00
675.67	8.31	143.66	674.22	-24.25	17.84	-22.55	30.10	Hold 8.31 Inc, 143.66 Az
6423.75	8.31	143.66	6361.89	-693.71	510.34	-645.22	861.21	KOP 8°/100
7633.67	90.00	358.76	7160.00	18.74	561.99	68.99	1595.40	LP 90.00 Inc, 358.76 Az
11383.67	90.00	358.76	7160.00	3767.86	480.84	3795.78	5345.40	Start DLS 2.00 TFO 90.00
11585.06	90.00	2.79	7160.00	3969.19	483.56	3996.55	5546.79	Hold 90.00 Inc, 2.79 Az
14661.38	90.00	2.79	7160.00	7041.87	633.18	7070.28	8623.11	TD at 14661.38

## DESIGN TARGET DETAILS

Name	TVD	+N/-S	+E/-W	Northing	Easting	Latitude	Longitude	Shape
WARNER 2D-10H-E165 BHL	7160.00	7041.87	633.18	1275510.566	3236129.922	40.086583	-104.656057	Point
WARNER 2D-10H-E165 TPZ	7160.00	18.74	561.99	1268487.076	3236125.397	40.067303	-104.656312	Point

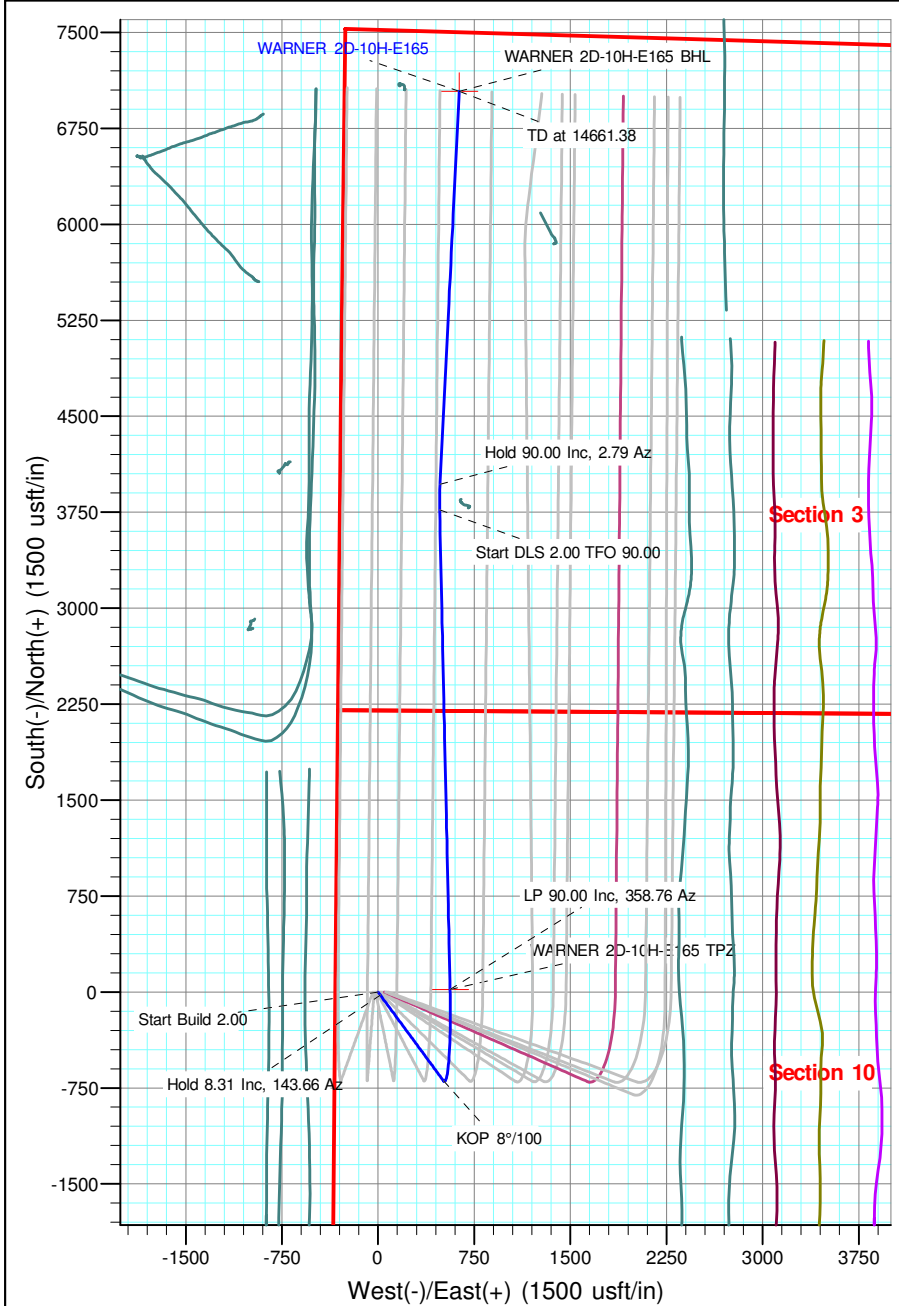


## Geodetic Datum:

North American Datum 1983  
US State Plane 1983, Colorado Northern Zone

## Elevation:

Ground Elevation: 4971.00  
KB Elevation: WELL @ 4994.00usft (Original Well Elev)





# **Crestone Peak Resources**

**Sec 10 T1N-R65W**

**Warner Pad**

**WARNER 2D-10H-E165**

**Wellbore #1**

**Plan: Plan #4 08Oct19 kjs**

## **Standard Planning Report - Geographic**

**08 October, 2019**

<b>Database:</b>	EDM 5000.15 Single User Db	<b>Local Co-ordinate Reference:</b>	Well WARNER 2D-10H-E165
<b>Company:</b>	Crestone Peak Resources	<b>TVD Reference:</b>	WELL @ 4994.00usft (Original Well Elev)
<b>Project:</b>	Sec 10 T1N-R65W	<b>MD Reference:</b>	WELL @ 4994.00usft (Original Well Elev)
<b>Site:</b>	Warner Pad	<b>North Reference:</b>	True
<b>Well:</b>	WARNER 2D-10H-E165	<b>Survey Calculation Method:</b>	Minimum Curvature
<b>Wellbore:</b>	Wellbore #1		
<b>Design:</b>	Plan #4 08Oct19 kjs		

<b>Project</b>	Sec 10 T1N-R65W, Wattenberg Field		
<b>Map System:</b>	US State Plane 1983	<b>System Datum:</b>	Mean Sea Level
<b>Geo Datum:</b>	North American Datum 1983		
<b>Map Zone:</b>	Colorado Northern Zone		

Site		Warner Pad			
Site Position:		Northing:	1,268,463.012 usft	Latitude:	40.067253
From:	Lat/Long	Easting:	3,235,523.582 usft	Longitude:	-104.658463
Position Uncertainty:	0.00 usft	Slot Radius:	13-3/16 "	Grid Convergence:	0.54 °

Well	WARNER 2D-10H-E165					
Well Position	+N/-S	0.00 usft	Northing:	1,268,463.002 usft	Latitude:	40.067252
	+E/-W	0.00 usft	Easting:	3,235,563.607 usft	Longitude:	-104.658320
Position Uncertainty		0.00 usft	Wellhead Elevation:		Ground Level:	4,971.00 usft

<b>Wellbore</b>	Wellbore #1				
<b>Magnetics</b>	<b>Model Name</b>	<b>Sample Date</b>	<b>Declination (°)</b>	<b>Dip Angle (°)</b>	<b>Field Strength (nT)</b>
	IGRF2015	9/4/2018	8.00	66.57	52,090.48740695

<b>Design</b>	Plan #4 08Oct19 kjs			
<b>Audit Notes:</b>				
<b>Version:</b>	<b>Phase:</b>	PLAN	<b>Tie On Depth:</b>	0.00
<b>Vertical Section:</b>	<b>Depth From (TVD) (usft)</b>	<b>+N/-S (usft)</b>	<b>+E/-W (usft)</b>	<b>Direction (°)</b>
	0.00	0.00	0.00	5.14

<b>Plan Survey Tool Program</b>	<b>Date</b>	10/8/2019		
<b>Depth From (usft)</b>	<b>Depth To (usft)</b>	<b>Survey (Wellbore)</b>	<b>Tool Name</b>	<b>Remarks</b>
1	0.00	14,661.38 Plan #4 08Oct19 kjs (Wellbore #1)	MWD	
			OWSG MWD - Standard	

<b>Plan Sections</b>										
<b>Measured Depth (usft)</b>	<b>Inclination (°)</b>	<b>Azimuth (°)</b>	<b>Vertical Depth (usft)</b>	<b>+N/-S (usft)</b>	<b>+E/-W (usft)</b>	<b>Dogleg Rate (°/100usft)</b>	<b>Build Rate (°/100usft)</b>	<b>Turn Rate (°/100usft)</b>	<b>TFO (°)</b>	<b>Target</b>
0.00	0.00	0.00	0.00	0.00	0.00	0.00	0.00	0.00	0.00	
260.00	0.00	0.00	260.00	0.00	0.00	0.00	0.00	0.00	0.00	
675.67	8.31	143.66	674.22	-24.25	17.84	2.00	2.00	0.00	143.66	
6,423.75	8.31	143.66	6,361.89	-693.71	510.34	0.00	0.00	0.00	0.00	
7,633.67	90.00	358.76	7,160.00	18.74	561.99	8.00	6.75	-11.98	-144.61	WARNER 2D-10H-E1
11,383.67	90.00	358.76	7,160.00	3,767.86	480.84	0.00	0.00	0.00	0.00	
11,585.06	90.00	2.79	7,160.00	3,969.19	483.56	2.00	0.00	2.00	90.00	
14,661.38	90.00	2.79	7,160.00	7,041.87	633.18	0.00	0.00	0.00	0.00	WARNER 2D-10H-E1

<b>Database:</b>	EDM 5000.15 Single User Db	<b>Local Co-ordinate Reference:</b>	Well WARNER 2D-10H-E165
<b>Company:</b>	Crestone Peak Resources	<b>TVD Reference:</b>	WELL @ 4994.00usft (Original Well Elev)
<b>Project:</b>	Sec 10 T1N-R65W	<b>MD Reference:</b>	WELL @ 4994.00usft (Original Well Elev)
<b>Site:</b>	Warner Pad	<b>North Reference:</b>	True
<b>Well:</b>	WARNER 2D-10H-E165	<b>Survey Calculation Method:</b>	Minimum Curvature
<b>Wellbore:</b>	Wellbore #1		
<b>Design:</b>	Plan #4 08Oct19 kjs		

Planned Survey									
Measured Depth (usft)	Inclination (°)	Azimuth (°)	Vertical Depth (usft)	+N/-S (usft)	+E/-W (usft)	Map Northing (usft)	Map Easting (usft)	Latitude	Longitude
0.00	0.00	0.00	0.00	0.00	0.00	1,268,463.002	3,235,563.607	40.067252	-104.658320
100.00	0.00	0.00	100.00	0.00	0.00	1,268,463.002	3,235,563.607	40.067252	-104.658320
200.00	0.00	0.00	200.00	0.00	0.00	1,268,463.002	3,235,563.607	40.067252	-104.658320
260.00	0.00	0.00	260.00	0.00	0.00	1,268,463.002	3,235,563.607	40.067252	-104.658320
<b>Start Build 2.00</b>									
300.00	0.80	143.66	300.00	-0.22	0.17	1,268,462.779	3,235,563.774	40.067251	-104.658320
400.00	2.80	143.66	399.94	-2.75	2.03	1,268,460.267	3,235,565.660	40.067244	-104.658313
500.00	4.80	143.66	499.72	-8.09	5.95	1,268,454.966	3,235,569.637	40.067230	-104.658299
600.00	6.80	143.66	599.20	-16.23	11.94	1,268,446.883	3,235,575.702	40.067207	-104.658278
675.67	8.31	143.66	674.22	-24.25	17.84	1,268,438.924	3,235,581.675	40.067185	-104.658257
<b>Hold 8.31 Inc, 143.66 Az</b>									
700.00	8.31	143.66	698.29	-27.08	19.92	1,268,436.111	3,235,583.786	40.067178	-104.658249
800.00	8.31	143.66	797.24	-38.73	28.49	1,268,424.546	3,235,592.465	40.067146	-104.658218
900.00	8.31	143.66	896.19	-50.38	37.06	1,268,412.981	3,235,601.143	40.067114	-104.658188
1,000.00	8.31	143.66	995.13	-62.02	45.63	1,268,401.416	3,235,609.821	40.067082	-104.658157
1,100.00	8.31	143.66	1,094.08	-73.67	54.20	1,268,389.851	3,235,618.499	40.067050	-104.658127
1,200.00	8.31	143.66	1,193.03	-85.32	62.76	1,268,378.286	3,235,627.178	40.067018	-104.658096
1,300.00	8.31	143.66	1,291.98	-96.96	71.33	1,268,366.721	3,235,635.856	40.066986	-104.658065
1,400.00	8.31	143.66	1,390.93	-108.61	79.90	1,268,355.156	3,235,644.534	40.066954	-104.658035
1,500.00	8.31	143.66	1,489.88	-120.26	88.47	1,268,343.591	3,235,653.212	40.066922	-104.658004
1,600.00	8.31	143.66	1,588.83	-131.90	97.04	1,268,332.026	3,235,661.891	40.066890	-104.657974
1,700.00	8.31	143.66	1,687.78	-143.55	105.60	1,268,320.462	3,235,670.569	40.066858	-104.657943
1,800.00	8.31	143.66	1,786.73	-155.20	114.17	1,268,308.897	3,235,679.247	40.066826	-104.657912
1,900.00	8.31	143.66	1,885.68	-166.84	122.74	1,268,297.332	3,235,687.925	40.066794	-104.657882
2,000.00	8.31	143.66	1,984.63	-178.49	131.31	1,268,285.767	3,235,696.604	40.066762	-104.657851
2,100.00	8.31	143.66	2,083.58	-190.14	139.88	1,268,274.202	3,235,705.282	40.066730	-104.657820
2,200.00	8.31	143.66	2,182.53	-201.78	148.44	1,268,262.637	3,235,713.960	40.066698	-104.657790
2,300.00	8.31	143.66	2,281.47	-213.43	157.01	1,268,251.072	3,235,722.638	40.066666	-104.657759
2,400.00	8.31	143.66	2,380.42	-225.08	165.58	1,268,239.507	3,235,731.317	40.066634	-104.657729
2,500.00	8.31	143.66	2,479.37	-236.72	174.15	1,268,227.942	3,235,739.995	40.066602	-104.657698
2,600.00	8.31	143.66	2,578.32	-248.37	182.72	1,268,216.377	3,235,748.673	40.066570	-104.657667
2,700.00	8.31	143.66	2,677.27	-260.02	191.29	1,268,204.813	3,235,757.351	40.066538	-104.657637
2,800.00	8.31	143.66	2,776.22	-271.66	199.85	1,268,193.248	3,235,766.030	40.066506	-104.657606
2,900.00	8.31	143.66	2,875.17	-283.31	208.42	1,268,181.683	3,235,774.708	40.066474	-104.657576
3,000.00	8.31	143.66	2,974.12	-294.96	216.99	1,268,170.118	3,235,783.386	40.066442	-104.657545
3,100.00	8.31	143.66	3,073.07	-306.60	225.56	1,268,158.553	3,235,792.064	40.066410	-104.657514
3,200.00	8.31	143.66	3,172.02	-318.25	234.13	1,268,146.988	3,235,800.743	40.066378	-104.657484
3,300.00	8.31	143.66	3,270.97	-329.90	242.69	1,268,135.423	3,235,809.421	40.066346	-104.657453
3,400.00	8.31	143.66	3,369.92	-341.54	251.26	1,268,123.858	3,235,818.099	40.066314	-104.657423
3,500.00	8.31	143.66	3,468.86	-353.19	259.83	1,268,112.293	3,235,826.777	40.066282	-104.657392
3,600.00	8.31	143.66	3,567.81	-364.84	268.40	1,268,100.728	3,235,835.456	40.066250	-104.657361
3,700.00	8.31	143.66	3,666.76	-376.48	276.97	1,268,089.164	3,235,844.134	40.066219	-104.657331
3,800.00	8.31	143.66	3,765.71	-388.13	285.53	1,268,077.599	3,235,852.812	40.066187	-104.657300
3,900.00	8.31	143.66	3,864.66	-399.78	294.10	1,268,066.034	3,235,861.490	40.066155	-104.657269
4,000.00	8.31	143.66	3,963.61	-411.42	302.67	1,268,054.469	3,235,870.169	40.066123	-104.657239
4,100.00	8.31	143.66	4,062.56	-423.07	311.24	1,268,042.904	3,235,878.847	40.066091	-104.657208
4,200.00	8.31	143.66	4,161.51	-434.72	319.81	1,268,031.339	3,235,887.525	40.066059	-104.657178
4,300.00	8.31	143.66	4,260.46	-446.36	328.37	1,268,019.774	3,235,896.204	40.066027	-104.657147
4,400.00	8.31	143.66	4,359.41	-458.01	336.94	1,268,008.209	3,235,904.882	40.065995	-104.657116
4,500.00	8.31	143.66	4,458.36	-469.66	345.51	1,267,996.644	3,235,913.560	40.065963	-104.657086
4,600.00	8.31	143.66	4,557.31	-481.31	354.08	1,267,985.080	3,235,922.238	40.065931	-104.657055
4,700.00	8.31	143.66	4,656.25	-492.95	362.65	1,267,973.515	3,235,930.917	40.065899	-104.657025
4,800.00	8.31	143.66	4,755.20	-504.60	371.22	1,267,961.950	3,235,939.595	40.065867	-104.656994
4,900.00	8.31	143.66	4,854.15	-516.25	379.78	1,267,950.385	3,235,948.273	40.065835	-104.656963

<b>Database:</b>	EDM 5000.15 Single User Db	<b>Local Co-ordinate Reference:</b>	Well WARNER 2D-10H-E165
<b>Company:</b>	Crestone Peak Resources	<b>TVD Reference:</b>	WELL @ 4994.00usft (Original Well Elev)
<b>Project:</b>	Sec 10 T1N-R65W	<b>MD Reference:</b>	WELL @ 4994.00usft (Original Well Elev)
<b>Site:</b>	Warner Pad	<b>North Reference:</b>	True
<b>Well:</b>	WARNER 2D-10H-E165	<b>Survey Calculation Method:</b>	Minimum Curvature
<b>Wellbore:</b>	Wellbore #1		
<b>Design:</b>	Plan #4 08Oct19 kjs		

Planned Survey									
Measured Depth (usft)	Inclination (°)	Azimuth (°)	Vertical Depth (usft)	+N/-S (usft)	+E/-W (usft)	Map Northing (usft)	Map Easting (usft)	Latitude	Longitude
5,000.00	8.31	143.66	4,953.10	-527.89	388.35	1,267,938.820	3,235,956.951	40.065803	-104.656933
5,100.00	8.31	143.66	5,052.05	-539.54	396.92	1,267,927.255	3,235,965.630	40.065771	-104.656902
5,200.00	8.31	143.66	5,151.00	-551.19	405.49	1,267,915.690	3,235,974.308	40.065739	-104.656871
5,300.00	8.31	143.66	5,249.95	-562.83	414.06	1,267,904.125	3,235,982.986	40.065707	-104.656841
5,400.00	8.31	143.66	5,348.90	-574.48	422.62	1,267,892.560	3,235,991.664	40.065675	-104.656810
5,500.00	8.31	143.66	5,447.85	-586.13	431.19	1,267,880.995	3,236,000.343	40.065643	-104.656780
5,600.00	8.31	143.66	5,546.80	-597.77	439.76	1,267,869.431	3,236,009.021	40.065611	-104.656749
5,700.00	8.31	143.66	5,645.75	-609.42	448.33	1,267,857.866	3,236,017.699	40.065579	-104.656718
5,800.00	8.31	143.66	5,744.70	-621.07	456.90	1,267,846.301	3,236,026.377	40.065547	-104.656688
5,900.00	8.31	143.66	5,843.65	-632.71	465.46	1,267,834.736	3,236,035.056	40.065515	-104.656657
6,000.00	8.31	143.66	5,942.59	-644.36	474.03	1,267,823.171	3,236,043.734	40.065483	-104.656627
6,100.00	8.31	143.66	6,041.54	-656.01	482.60	1,267,811.606	3,236,052.412	40.065451	-104.656596
6,200.00	8.31	143.66	6,140.49	-667.65	491.17	1,267,800.041	3,236,061.090	40.065419	-104.656565
6,300.00	8.31	143.66	6,239.44	-679.30	499.74	1,267,788.476	3,236,069.769	40.065387	-104.656535
6,400.00	8.31	143.66	6,338.39	-690.95	508.30	1,267,776.911	3,236,078.447	40.065355	-104.656504
6,423.75	8.31	143.66	6,361.89	-693.71	510.34	1,267,774.164	3,236,080.508	40.065348	-104.656497
<b>KOP 8°/100</b>									
6,500.00	4.85	96.99	6,437.68	-698.55	516.81	1,267,769.389	3,236,087.027	40.065334	-104.656474
6,600.00	8.74	31.91	6,537.08	-692.61	525.04	1,267,775.409	3,236,095.196	40.065351	-104.656444
6,700.00	16.02	15.77	6,634.71	-672.85	532.82	1,267,795.244	3,236,102.786	40.065405	-104.656417
6,800.00	23.77	9.76	6,728.68	-639.65	540.00	1,267,828.508	3,236,109.649	40.065496	-104.656391
6,900.00	31.64	6.60	6,817.16	-593.66	546.44	1,267,874.555	3,236,115.653	40.065622	-104.656368
7,000.00	39.55	4.60	6,898.41	-535.78	552.01	1,267,932.487	3,236,120.679	40.065781	-104.656348
7,100.00	47.49	3.18	6,970.87	-467.13	556.62	1,268,001.177	3,236,124.631	40.065970	-104.656332
7,200.00	55.45	2.08	7,033.11	-389.05	560.16	1,268,079.289	3,236,127.431	40.066184	-104.656319
7,300.00	63.41	1.17	7,083.94	-303.05	562.57	1,268,165.301	3,236,129.025	40.066420	-104.656310
7,400.00	71.37	0.38	7,122.35	-210.82	563.80	1,268,257.540	3,236,129.381	40.066673	-104.656306
7,500.00	79.34	359.67	7,147.61	-114.15	563.83	1,268,354.210	3,236,128.494	40.066939	-104.656306
7,600.00	87.32	358.99	7,159.21	-14.91	562.66	1,268,453.430	3,236,126.379	40.067211	-104.656310
7,633.67	90.00	358.76	7,160.00	18.74	561.99	1,268,487.076	3,236,125.398	40.067303	-104.656312
<b>LP 90.00 Inc, 358.76 Az - WARNER 2D-10H-E165 TPZ</b>									
7,700.00	90.00	358.76	7,160.00	85.05	560.56	1,268,553.371	3,236,123.333	40.067485	-104.656317
7,800.00	90.00	358.76	7,160.00	185.03	558.39	1,268,653.322	3,236,120.220	40.067760	-104.656325
7,900.00	90.00	358.76	7,160.00	285.01	556.23	1,268,753.274	3,236,117.107	40.068034	-104.656333
8,000.00	90.00	358.76	7,160.00	384.98	554.07	1,268,853.225	3,236,113.994	40.068309	-104.656341
8,100.00	90.00	358.76	7,160.00	484.96	551.90	1,268,953.177	3,236,110.881	40.068583	-104.656348
8,200.00	90.00	358.76	7,160.00	584.93	549.74	1,269,053.129	3,236,107.768	40.068858	-104.656356
8,300.00	90.00	358.76	7,160.00	684.91	547.57	1,269,153.080	3,236,104.656	40.069132	-104.656364
8,400.00	90.00	358.76	7,160.00	784.89	545.41	1,269,253.032	3,236,101.543	40.069407	-104.656371
8,500.00	90.00	358.76	7,160.00	884.86	543.25	1,269,352.983	3,236,098.430	40.069681	-104.656379
8,600.00	90.00	358.76	7,160.00	984.84	541.08	1,269,452.935	3,236,095.317	40.069956	-104.656387
8,700.00	90.00	358.76	7,160.00	1,084.82	538.92	1,269,552.886	3,236,092.204	40.070230	-104.656395
8,800.00	90.00	358.76	7,160.00	1,184.79	536.75	1,269,652.838	3,236,089.091	40.070504	-104.656402
8,900.00	90.00	358.76	7,160.00	1,284.77	534.59	1,269,752.789	3,236,085.978	40.070779	-104.656410
9,000.00	90.00	358.76	7,160.00	1,384.75	532.43	1,269,852.741	3,236,082.865	40.071053	-104.656418
9,100.00	90.00	358.76	7,160.00	1,484.72	530.26	1,269,952.692	3,236,079.752	40.071328	-104.656426
9,200.00	90.00	358.76	7,160.00	1,584.70	528.10	1,270,052.644	3,236,076.640	40.071602	-104.656433
9,300.00	90.00	358.76	7,160.00	1,684.68	525.93	1,270,152.595	3,236,073.527	40.071877	-104.656441
9,400.00	90.00	358.76	7,160.00	1,784.65	523.77	1,270,252.547	3,236,070.414	40.072151	-104.656449
9,500.00	90.00	358.76	7,160.00	1,884.63	521.61	1,270,352.498	3,236,067.301	40.072426	-104.656456
9,600.00	90.00	358.76	7,160.00	1,984.61	519.44	1,270,452.450	3,236,064.188	40.072700	-104.656464
9,700.00	90.00	358.76	7,160.00	2,084.58	517.28	1,270,552.402	3,236,061.075	40.072975	-104.656472
9,800.00	90.00	358.76	7,160.00	2,184.56	515.11	1,270,652.353	3,236,057.962	40.073249	-104.656480
9,900.00	90.00	358.76	7,160.00	2,284.54	512.95	1,270,752.305	3,236,054.849	40.073523	-104.656487

<b>Database:</b>	EDM 5000.15 Single User Db	<b>Local Co-ordinate Reference:</b>	Well WARNER 2D-10H-E165
<b>Company:</b>	Crestone Peak Resources	<b>TVD Reference:</b>	WELL @ 4994.00usft (Original Well Elev)
<b>Project:</b>	Sec 10 T1N-R65W	<b>MD Reference:</b>	WELL @ 4994.00usft (Original Well Elev)
<b>Site:</b>	Warner Pad	<b>North Reference:</b>	True
<b>Well:</b>	WARNER 2D-10H-E165	<b>Survey Calculation Method:</b>	Minimum Curvature
<b>Wellbore:</b>	Wellbore #1		
<b>Design:</b>	Plan #4 08Oct19 kjs		

Planned Survey									
Measured Depth (usft)	Inclination (°)	Azimuth (°)	Vertical Depth (usft)	+N/-S (usft)	+E/-W (usft)	Map Northing (usft)	Map Easting (usft)	Latitude	Longitude
10,000.00	90.00	358.76	7,160.00	2,384.51	510.79	1,270,852.256	3,236,051.737	40.073798	-104.656495
10,100.00	90.00	358.76	7,160.00	2,484.49	508.62	1,270,952.208	3,236,048.624	40.074072	-104.656503
10,200.00	90.00	358.76	7,160.00	2,584.47	506.46	1,271,052.159	3,236,045.511	40.074347	-104.656511
10,300.00	90.00	358.76	7,160.00	2,684.44	504.29	1,271,152.111	3,236,042.398	40.074621	-104.656518
10,400.00	90.00	358.76	7,160.00	2,784.42	502.13	1,271,252.062	3,236,039.285	40.074896	-104.656526
10,500.00	90.00	358.76	7,160.00	2,884.40	499.97	1,271,352.014	3,236,036.172	40.075170	-104.656534
10,600.00	90.00	358.76	7,160.00	2,984.37	497.80	1,271,451.965	3,236,033.059	40.075445	-104.656541
10,700.00	90.00	358.76	7,160.00	3,084.35	495.64	1,271,551.917	3,236,029.946	40.075719	-104.656549
10,800.00	90.00	358.76	7,160.00	3,184.33	493.47	1,271,651.868	3,236,026.834	40.075994	-104.656557
10,900.00	90.00	358.76	7,160.00	3,284.30	491.31	1,271,751.820	3,236,023.721	40.076268	-104.656565
11,000.00	90.00	358.76	7,160.00	3,384.28	489.15	1,271,851.771	3,236,020.608	40.076542	-104.656572
11,100.00	90.00	358.76	7,160.00	3,484.26	486.98	1,271,951.723	3,236,017.495	40.076817	-104.656580
11,200.00	90.00	358.76	7,160.00	3,584.23	484.82	1,272,051.675	3,236,014.382	40.077091	-104.656588
11,300.00	90.00	358.76	7,160.00	3,684.21	482.65	1,272,151.626	3,236,011.269	40.077366	-104.656595
11,383.67	90.00	358.76	7,160.00	3,767.86	480.84	1,272,235.258	3,236,008.664	40.077595	-104.656602
<b>Start DLS 2.00 TFO 90.00</b>									
11,400.00	90.00	359.09	7,160.00	3,784.19	480.54	1,272,251.579	3,236,008.203	40.077640	-104.656603
11,500.00	90.00	1.09	7,160.00	3,884.18	480.69	1,272,351.571	3,236,007.405	40.077915	-104.656603
11,585.06	90.00	2.79	7,160.00	3,969.19	483.56	1,272,436.603	3,236,009.473	40.078148	-104.656592
<b>Hold 90.00 Inc, 2.79 Az</b>									
11,600.00	90.00	2.79	7,160.00	3,984.11	484.29	1,272,451.531	3,236,010.058	40.078189	-104.656590
11,700.00	90.00	2.79	7,160.00	4,083.99	489.15	1,272,551.454	3,236,013.973	40.078463	-104.656572
11,800.00	90.00	2.79	7,160.00	4,183.88	494.02	1,272,651.378	3,236,017.889	40.078737	-104.656555
11,900.00	90.00	2.79	7,160.00	4,283.76	498.88	1,272,751.301	3,236,021.804	40.079012	-104.656537
12,000.00	90.00	2.79	7,160.00	4,383.64	503.74	1,272,851.224	3,236,025.719	40.079286	-104.656520
12,100.00	90.00	2.79	7,160.00	4,483.52	508.61	1,272,951.148	3,236,029.635	40.079560	-104.656503
12,200.00	90.00	2.79	7,160.00	4,583.40	513.47	1,273,051.071	3,236,033.550	40.079834	-104.656485
12,300.00	90.00	2.79	7,160.00	4,683.28	518.33	1,273,150.994	3,236,037.465	40.080108	-104.656468
12,400.00	90.00	2.79	7,160.00	4,783.17	523.20	1,273,250.917	3,236,041.381	40.080383	-104.656451
12,500.00	90.00	2.79	7,160.00	4,883.05	528.06	1,273,350.841	3,236,045.296	40.080657	-104.656433
12,600.00	90.00	2.79	7,160.00	4,982.93	532.92	1,273,450.764	3,236,049.211	40.080931	-104.656416
12,700.00	90.00	2.79	7,160.00	5,082.81	537.79	1,273,550.687	3,236,053.127	40.081205	-104.656398
12,800.00	90.00	2.79	7,160.00	5,182.69	542.65	1,273,650.611	3,236,057.042	40.081479	-104.656381
12,900.00	90.00	2.79	7,160.00	5,282.57	547.52	1,273,750.534	3,236,060.958	40.081754	-104.656364
13,000.00	90.00	2.79	7,160.00	5,382.46	552.38	1,273,850.458	3,236,064.873	40.082028	-104.656346
13,100.00	90.00	2.79	7,160.00	5,482.34	557.24	1,273,950.382	3,236,068.788	40.082302	-104.656329
13,200.00	90.00	2.79	7,160.00	5,582.22	562.11	1,274,050.305	3,236,072.704	40.082576	-104.656311
13,300.00	90.00	2.79	7,160.00	5,682.10	566.97	1,274,150.228	3,236,076.619	40.082850	-104.656294
13,400.00	90.00	2.79	7,160.00	5,781.98	571.83	1,274,250.152	3,236,080.534	40.083124	-104.656277
13,500.00	90.00	2.79	7,160.00	5,881.86	576.70	1,274,350.075	3,236,084.450	40.083399	-104.656259
13,600.00	90.00	2.79	7,160.00	5,981.74	581.56	1,274,449.998	3,236,088.365	40.083673	-104.656242
13,700.00	90.00	2.79	7,160.00	6,081.63	586.42	1,274,549.922	3,236,092.281	40.083947	-104.656224
13,800.00	90.00	2.79	7,160.00	6,181.51	591.29	1,274,649.845	3,236,096.196	40.084221	-104.656207
13,900.00	90.00	2.79	7,160.00	6,281.39	596.15	1,274,749.768	3,236,100.111	40.084495	-104.656190
14,000.00	90.00	2.79	7,160.00	6,381.27	601.02	1,274,849.692	3,236,104.027	40.084770	-104.656172
14,100.00	90.00	2.79	7,160.00	6,481.15	605.88	1,274,949.615	3,236,107.942	40.085044	-104.656155
14,200.00	90.00	2.79	7,160.00	6,581.03	610.74	1,275,049.538	3,236,111.857	40.085318	-104.656138
14,300.00	90.00	2.79	7,160.00	6,680.92	615.61	1,275,149.461	3,236,115.773	40.085592	-104.656120
14,400.00	90.00	2.79	7,160.00	6,780.80	620.47	1,275,249.385	3,236,119.688	40.085866	-104.656103
14,500.00	90.00	2.79	7,160.00	6,880.68	625.33	1,275,349.308	3,236,123.604	40.086141	-104.656085
14,600.00	90.00	2.79	7,160.00	6,980.56	630.20	1,275,449.231	3,236,127.519	40.086415	-104.656068
14,661.38	90.00	2.79	7,160.00	7,041.87	633.18	1,275,510.566	3,236,129.922	40.086583	-104.656057
<b>TD at 14661.38 - WARNER 2D-10H-E165 BHL</b>									

<b>Database:</b>	EDM 5000.15 Single User Db	<b>Local Co-ordinate Reference:</b>	Well WARNER 2D-10H-E165
<b>Company:</b>	Crestone Peak Resources	<b>TVD Reference:</b>	WELL @ 4994.00usft (Original Well Elev)
<b>Project:</b>	Sec 10 T1N-R65W	<b>MD Reference:</b>	WELL @ 4994.00usft (Original Well Elev)
<b>Site:</b>	Warner Pad	<b>North Reference:</b>	True
<b>Well:</b>	WARNER 2D-10H-E165	<b>Survey Calculation Method:</b>	Minimum Curvature
<b>Wellbore:</b>	Wellbore #1		
<b>Design:</b>	Plan #4 08Oct19 kjs		

Design Targets									
Target Name									
- hit/miss target	Dip Angle	Dip Dir.	TVD	+N/-S	+E/-W	Northing	Easting	Latitude	Longitude
- Shape	(°)	(°)	(usft)	(usft)	(usft)	(usft)	(usft)		
WARNER 2D-10H-E165	0.00	0.00	7,160.00	7,041.87	633.18	1,275,510.566	3,236,129.922	40.086583	-104.656057
- plan hits target center									
- Point									
WARNER 2D-10H-E165	0.00	0.00	7,160.00	18.74	561.99	1,268,487.076	3,236,125.398	40.067303	-104.656312
- plan hits target center									
- Point									

Plan Annotations				
Measured Depth	Vertical Depth	Local Coordinates		Comment
(usft)	(usft)	+N/-S (usft)	+E/-W (usft)	
260.00	260.00	0.00	0.00	Start Build 2.00
675.67	674.22	-24.25	17.84	Hold 8.31 Inc, 143.66 Az
6,423.75	6,361.89	-693.71	510.34	KOP 8°/100
7,633.67	7,160.00	18.74	561.99	LP 90.00 Inc, 358.76 Az
11,383.67	7,160.00	3,767.86	480.84	Start DLS 2.00 TFO 90.00
11,585.06	7,160.00	3,969.19	483.56	Hold 90.00 Inc, 2.79 Az
14,661.38	7,160.00	7,041.87	633.18	TD at 14661.38