



# Fox Creek 34-0164D

MD  
5":100'

Company: High Point Resources  
Well Name: Fox Creek 34-0164D  
API: 05-123-49950  
County/Parish: Weld  
State: Colorado  
Country: USA  
Job number: 00284HI-CO  
Field: DU Basin  
Rig Id: Savanna #802  
Survey Company: Atlas Drilling Services  
Day MWD Ben Kilby  
Night MWD Albert Frith

Log measurements: Gamma / ROP  
Depth measured from: RKB ft  
Maximum temperature: 243.5

Depth Start: 1561.0 ft  
End: 8254.0 ft  
Date 10/10/2019  
10/17/2019

Mud Type: WBM  
Density: 9.0  
Viscosity: 29  
Rm: Rmt: Rmc: Elevations  
KB: 20.0  
GL: 5450.8  
DF: 5470.8

Run	Bit Size	Gamma	Offsets	Survey	Start	End	Depths	Start	End	Dates
1	8.75"	47.25 ft	66.00 ft	1561.0 ft	8328.0 ft	10/10/2019	21:30	10/12/2019	23:00	
2	6.125"	47.67 ft	67.00 ft	8328.0 ft	18254.0 ft	10/13/2019	15:00	10/17/2019	19:00	
3										
4										
5										
6										
7										
8										
9										
10										

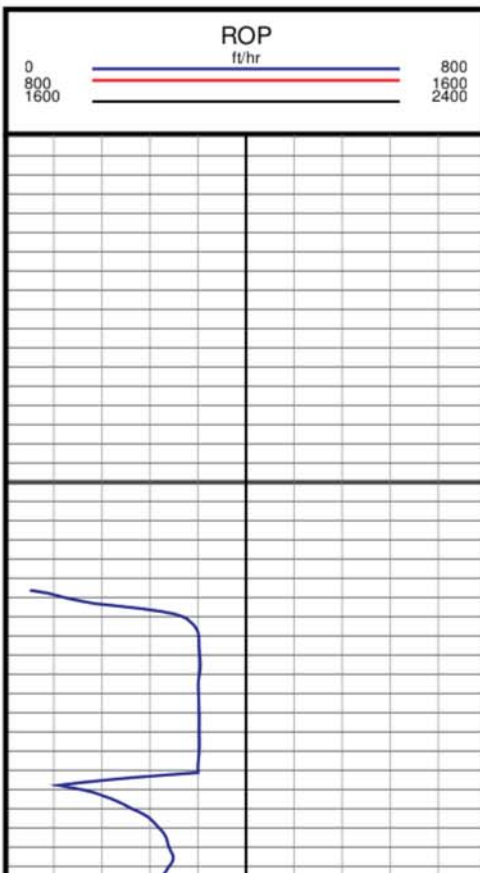
SURFACE FLOAT: 1500.0 / SURFACE SHOE: 1545.0  
INTERMEDIATE FLOAT: 8223.0 / INTERMEDIATE SHOE: 8268.0  
KOP: 7332.0 / LP: 8262.0

Atlas Drilling Services uses its best efforts to provide its customers with accurate information and interpretations in conjunction with services performed but will not be held liable or responsible for the accuracy of such information or interpretation.

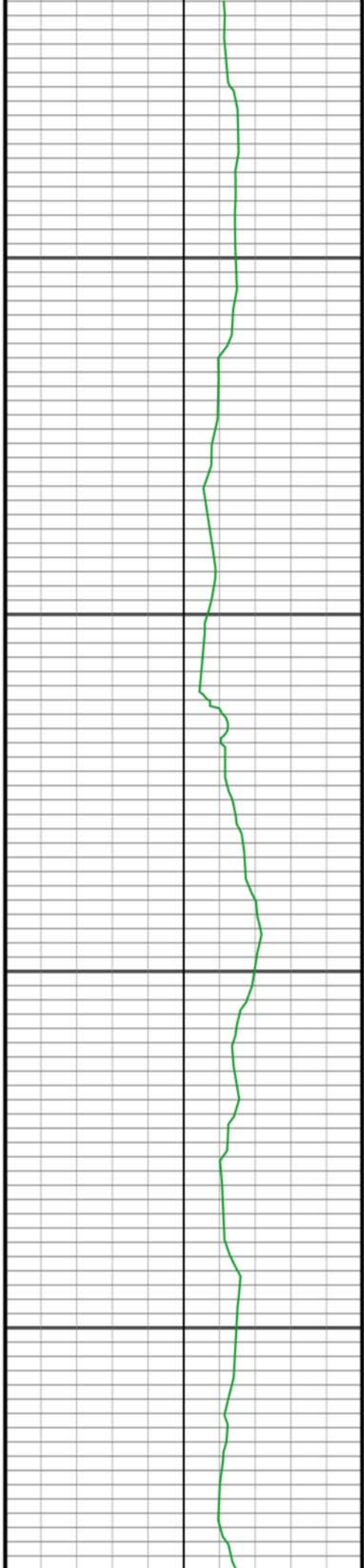


MD

1550



#1 MD(1579.00) Inc(6.09) Azm(5.65) TVD(1575.05) VS(-96.88)  
DLS(1.74)

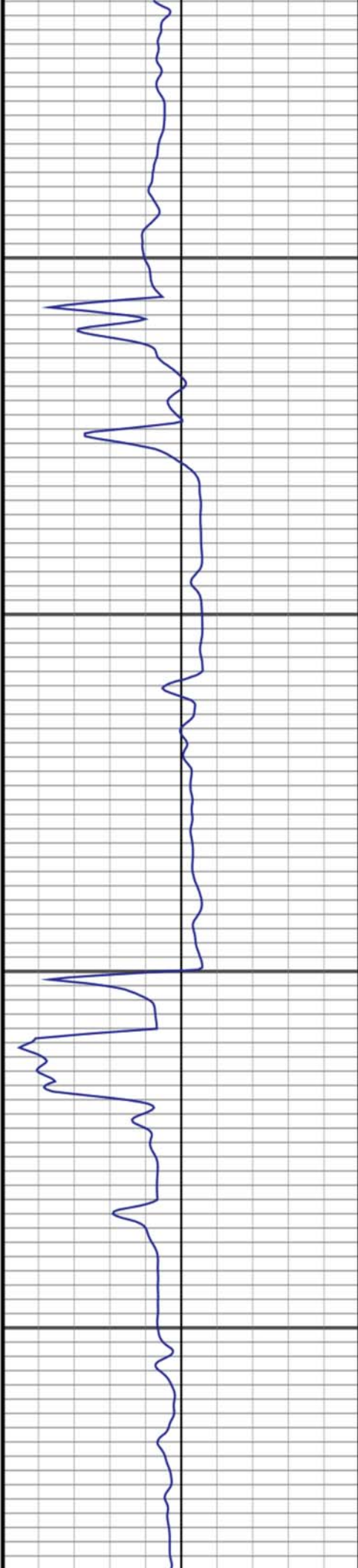


5150

5200

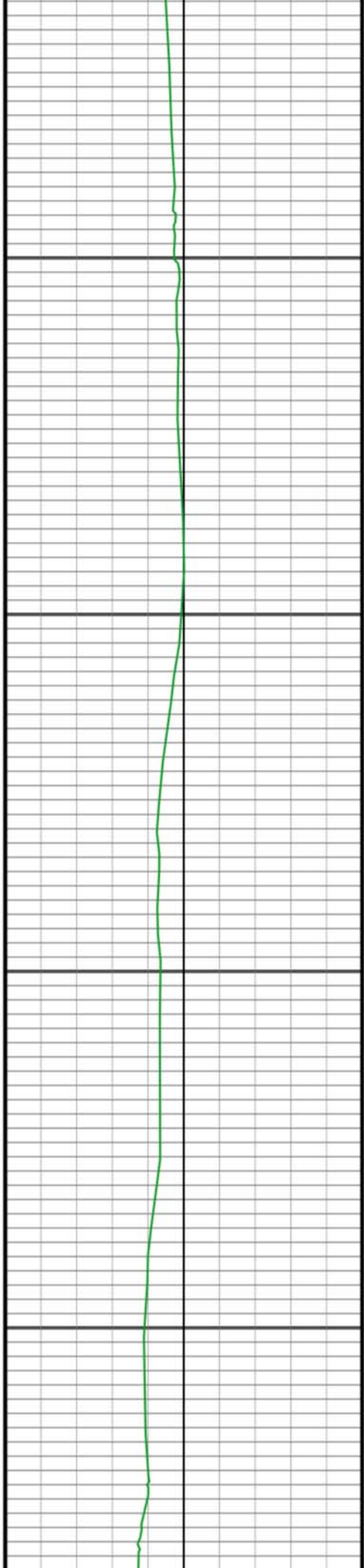
5250

5300



#39 MD(5183.00) Inc(9.32) Azm(347.30) TVD(5014.37)  
VS(-1111.87) DLS(0.38)

#40 MD(5278.00) Inc(9.83) Azm(351.83) TVD(5108.05)  
VS(-1127.42) DLS(0.96)

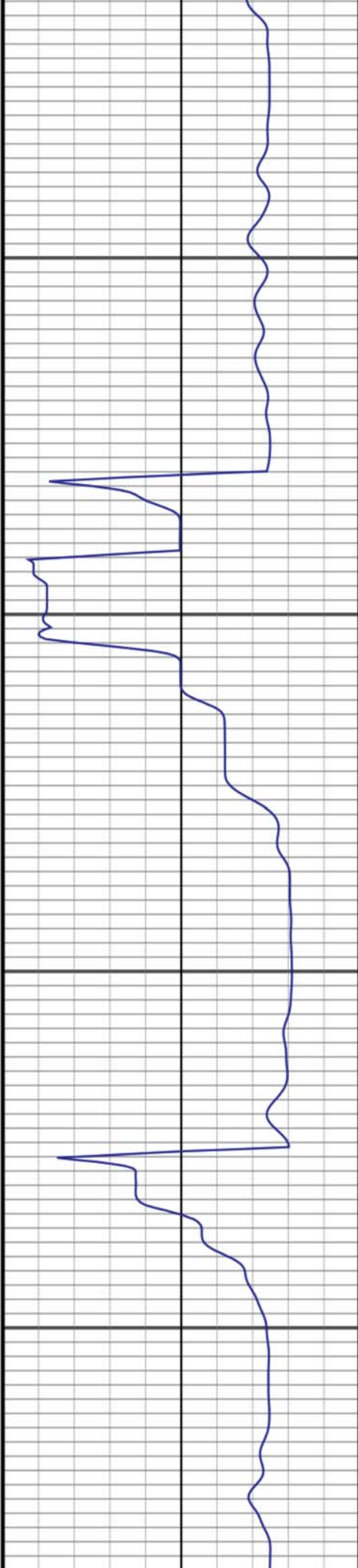


8750

8800

8850

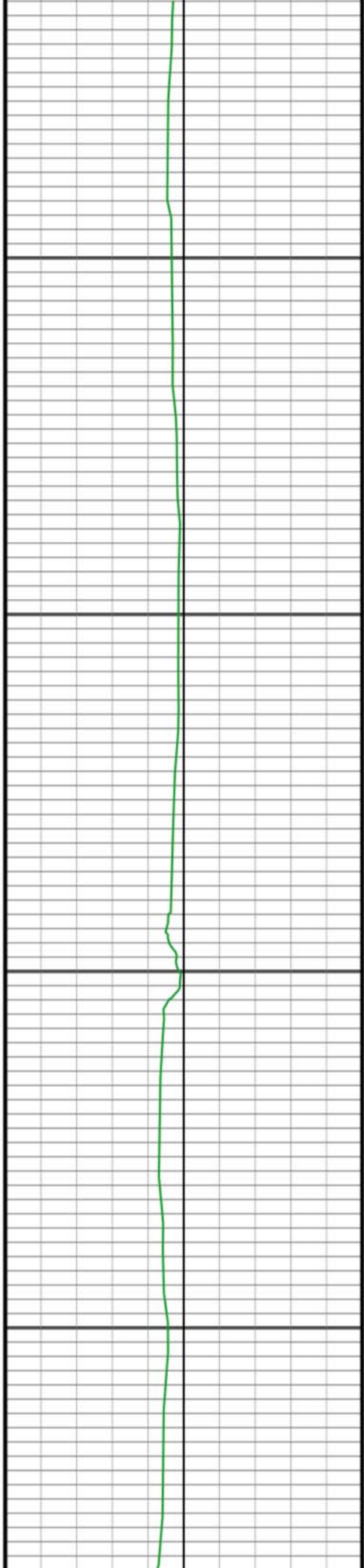
8900



#77 MD(8714.00) Inc(89.69) Azm(179.42) TVD(7720.41)  
VS(-364.66) DLS(1.09)

#78 MD(8809.00) Inc(90.68) Azm(179.73) TVD(7720.10)  
VS(-269.66) DLS(1.09)

#79 MD(8904.00) Inc(89.88) Azm(181.08) TVD(7719.64)  
VS(-174.67) DLS(1.65)

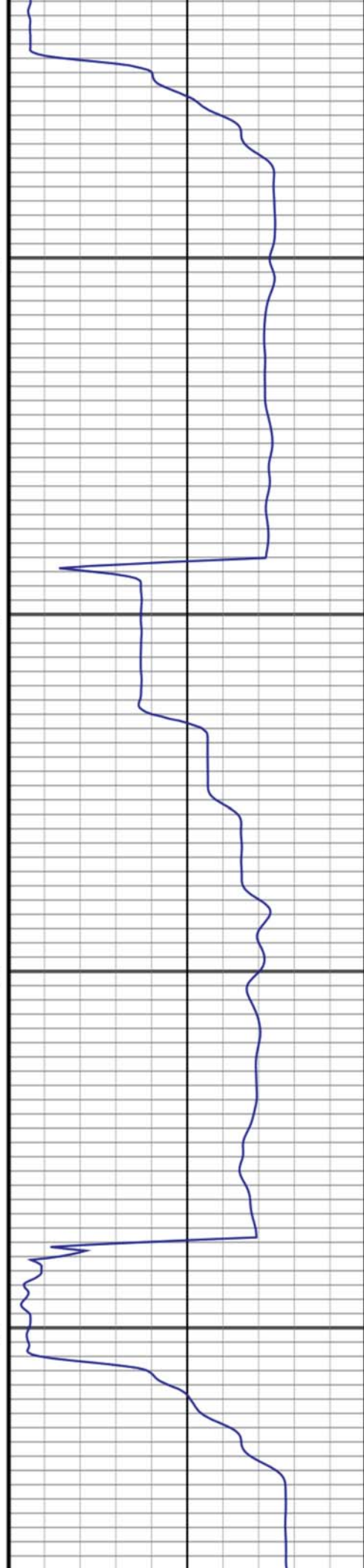


12350

12400

12450

12500

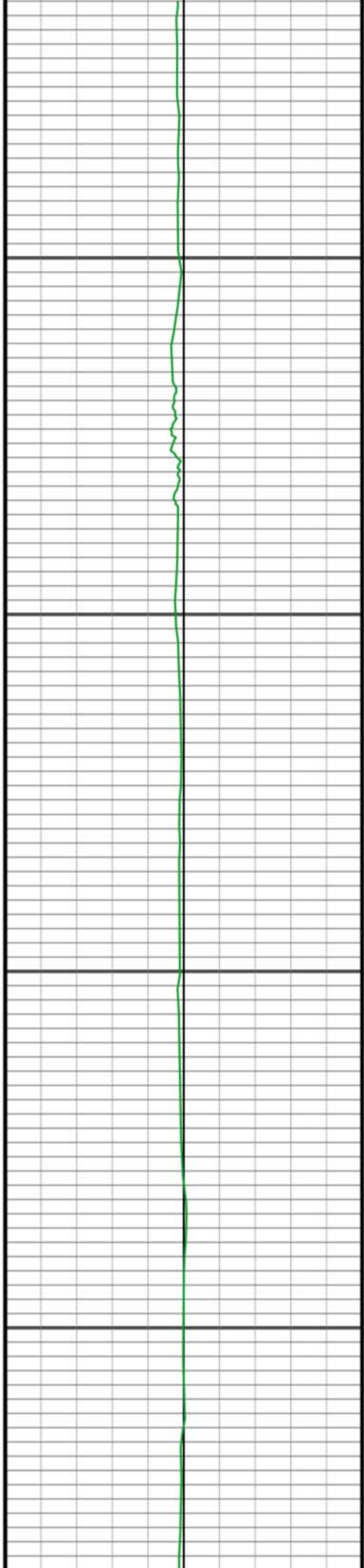


#115 MD(12326.00) Inc(90.55) Azm(179.02) TVD(7716.77)  
VS(3245.40) DLS(2.15)

#116 MD(12421.00) Inc(89.59) Azm(178.15) TVD(7716.65)  
VS(3340.38) DLS(1.36)

#117 MD(12516.00) Inc(90.59) Azm(178.66) TVD(7716.50)  
VS(3435.36) DLS(1.18)



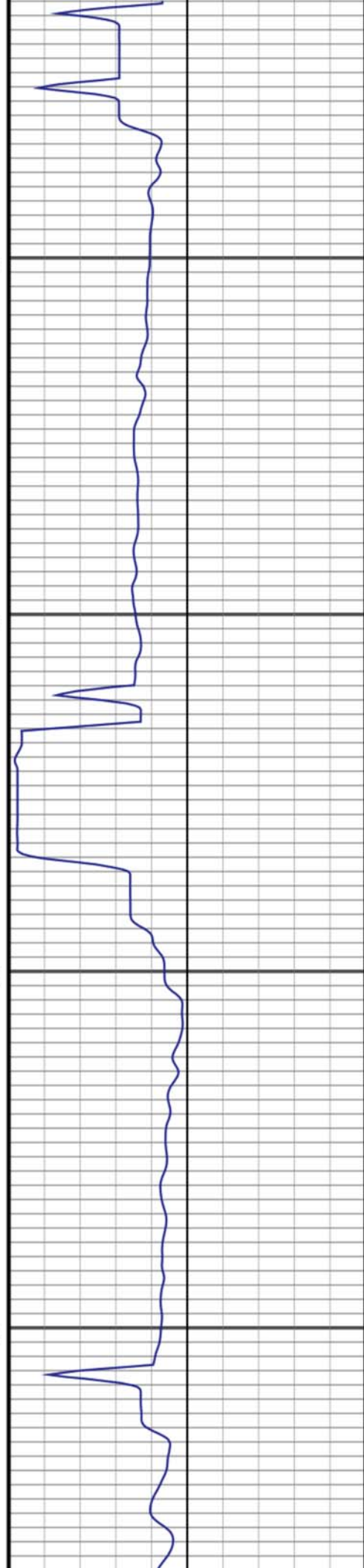


15950

16000

16050

16100



#153 MD(15944.00) Inc(89.42) Azm(178.97) TVD(7706.18)  
VS(6862.83) DLS(1.10)

#154 MD(16039.00) Inc(90.24) Azm(179.83) TVD(7706.46)  
VS(6957.82) DLS(1.25)

#155 MD(16134.00) Inc(88.67) Azm(178.08) TVD(7707.37)