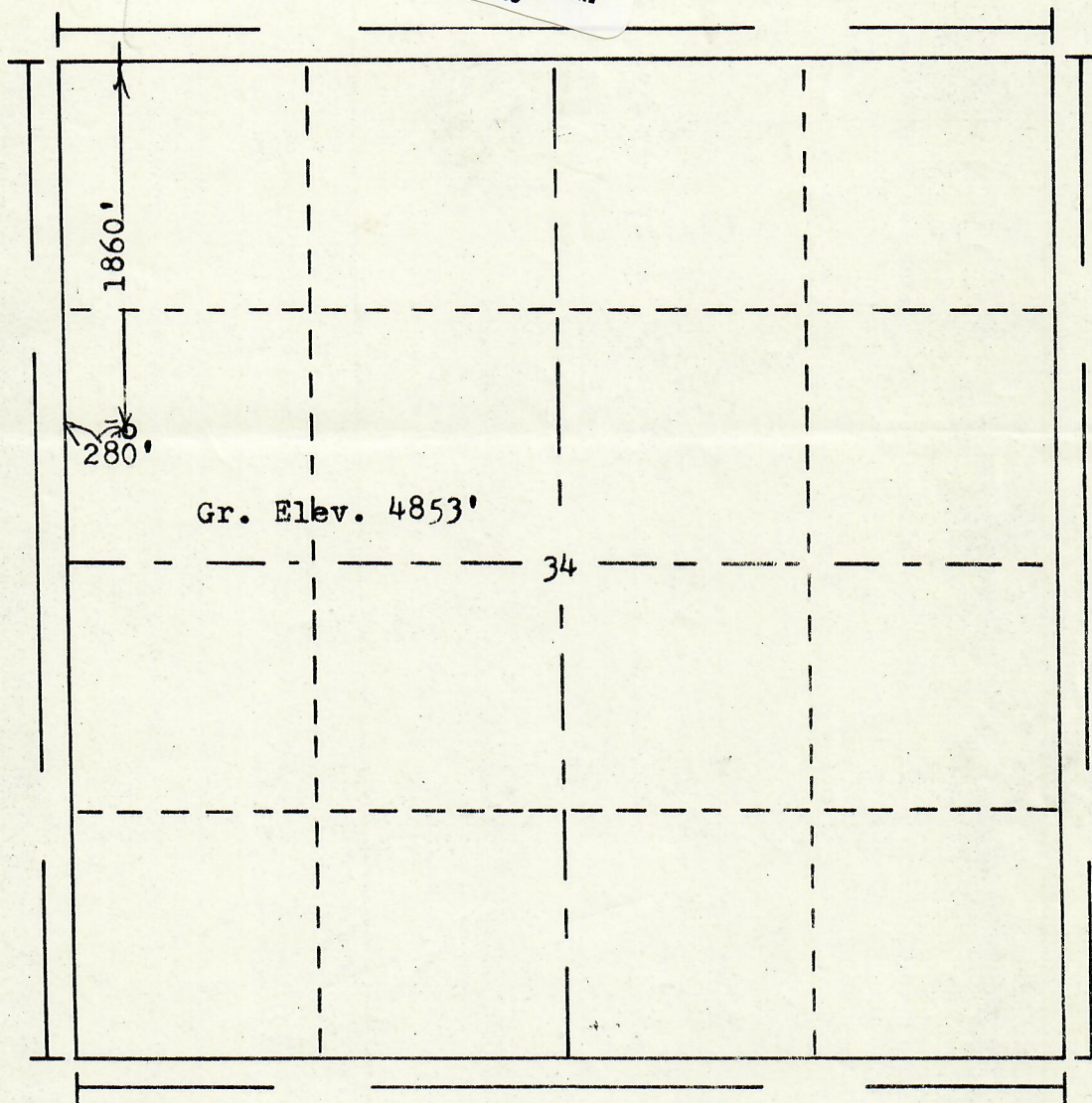




FORM F-106

81-1210

RECEIVED  
APR 22 1981  
COLO. OIL & GAS CONS. COMM.

Scale... 1" = 1000'

**Powers Elevation of Denver, Colorado**

has in accordance with a request from Mr. Coldiron  
for Amoco Production Co.

determined the location of No. 1 Harmony Commercial Industrial  
to be 1860' FN 280' FN Section 34 Township 7N  
Range 68W of the 6th Principal Meridian  
Larimer County, Colorado

I hereby certify that this plat is an  
accurate representation of a correct  
survey showing the location of

Date: 4-7-81

Brian J. Haller  
Licensed Land Surveyor No. 2853  
State of Colorado