

RECEIVED

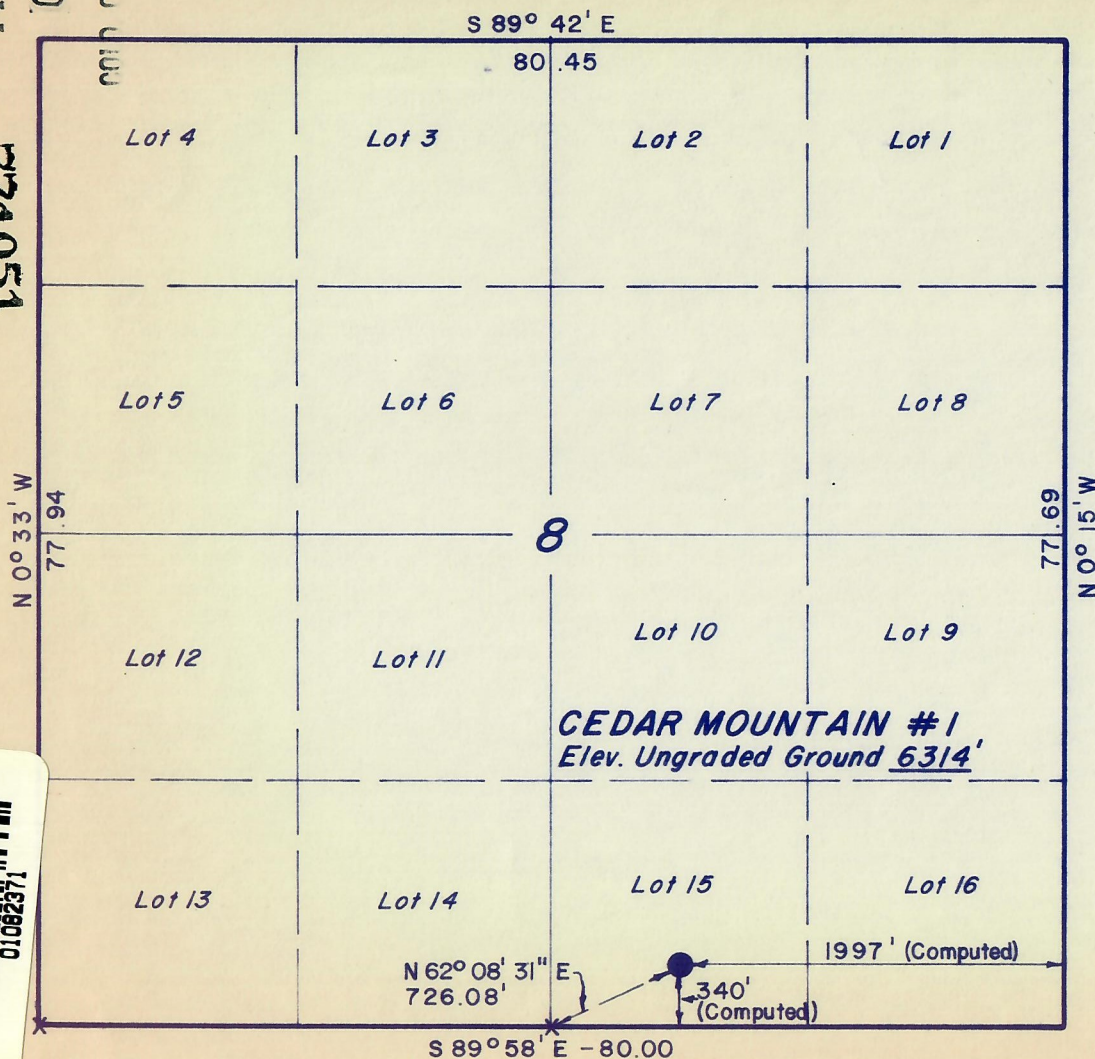
OCT 13 1977

UNSUB. COMM.

150144

T7N, R90W, 6<sup>th</sup> P.M.PROJECT  
ENERGY RESERVE GROUP

Well location, CEDAR MOUNTAIN #1,  
located as shown in the SW 1/4 SE 1/4 (Lot 15)  
Section 8, T7N, R90W, 6<sup>th</sup> P.M.  
Moffat County, Colorado.



X = Section Corners Located



## CERTIFICATE

THIS IS TO CERTIFY THAT THE ABOVE PLAT WAS PREPARED FROM  
FIELD NOTES OF ACTUAL SURVEYS MADE BY ME OR UNDER MY  
SUPERVISION AND THAT THE SAME ARE TRUE, AND CORRECT TO THE  
BEST OF MY KNOWLEDGE AND BELIEF.

*Lene Stewart*

REGISTERED LAND SURVEYOR  
REGISTRATION NO 9186  
STATE OF COLORADO

UINTAH ENGINEERING & LAND SURVEYING  
P.O. BOX Q - 110 EAST - FIRST SOUTH  
VERNAL, UTAH - 84078

SCALE 1" = 1000'	DATE 10-4-77
PARTY M.S. D.S. K.H.	REFERENCES GLO Plat
WEATHER Fair	FILE ENERGY RESERVE GROUP