

RECEIVED

DEC 22 1989

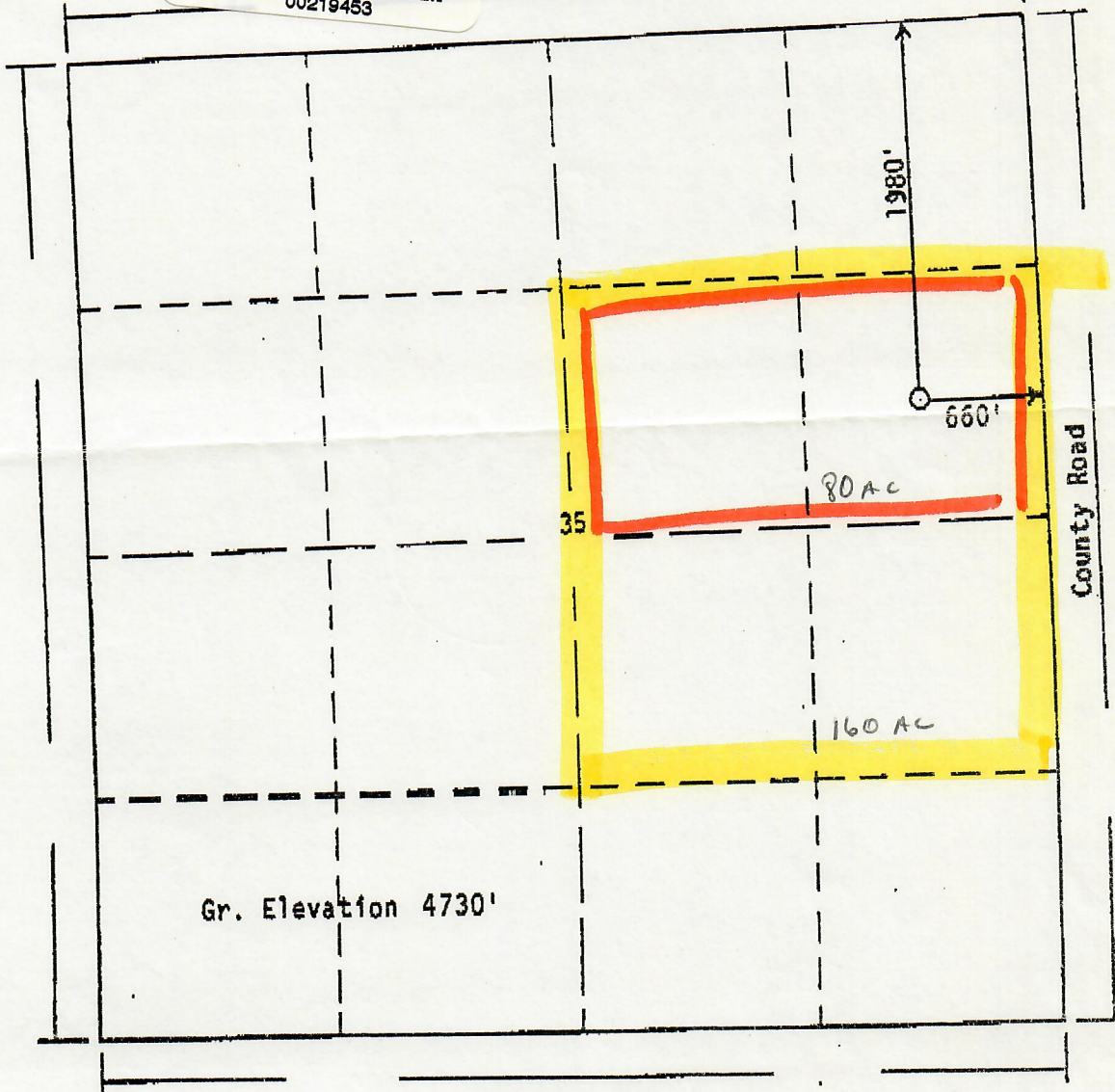
Form PS-102

R. 67 W

COLORADO OIL & GAS CONS. COM.



00219453



N

T. 6 N

Scale: 1"=1000'

Powers Elevation of Denver, Colorado has in accordance with a request from M.W. Hamilton for Colorado Southern Gas Company, Inc. determined the location of 35-1 Christiansen to be 1980fnl, 660fel Section 35, Township 6 N Range 67 W of the 6th Principal Meridian, Weld County, Colorado

I hereby certify that this plat is an accurate representation of a correct survey showing the location of 35-1 Christiansen



20693

Date: 12-19-89

Licensed Land Surveyor No. 20693
State of Colorado