

T8N, R59W, 6th P.M.

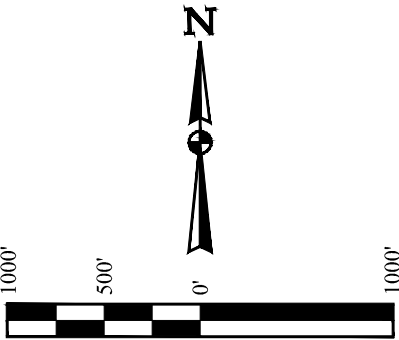
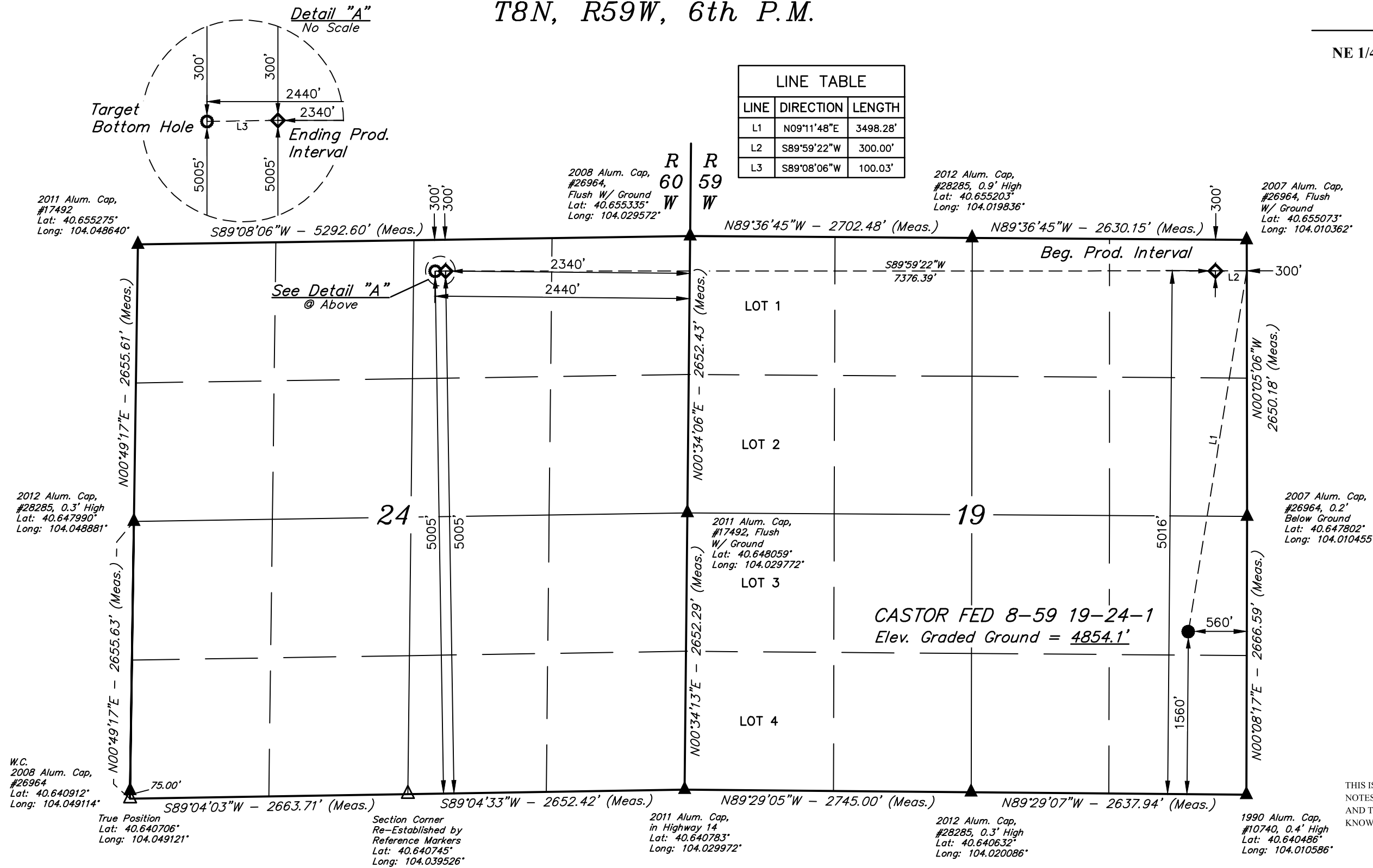
BISON OIL & GAS II

CASTOR FED 8-59 19-24-1
NE 1/4 SE 1/4, SECTION 19, T8N, R59W, 6th P.M.
WELD COUNTY, COLORADO

BASIS OF BEARINGS
TRANSVERSE MERCATOR PROJECTION WITH
A CENTRAL MERIDIAN OF W105°00'00".

BASIS OF ELEVATION
OPUS SOLUTION GENERATED NAVD 88

LINE TABLE		
LINE	DIRECTION	LENGTH
L1	N09°11'48"E	3498.28'
L2	S89°59'22"W	300.00'
L3	S89°08'06"W	100.03'



CERTIFICATE

THIS IS TO CERTIFY THAT THE ABOVE PLAT WAS PREPARED FROM FIELD NOTES OF ACTUAL SURVEYS MADE BY ME OR UNDER MY SUPERVISION, AND THAT THE SAME ARE TRUE AND CORRECT TO THE BEST OF MY KNOWLEDGE AND BELIEF.

REGISTERED LAND SURVEYOR
REGISTRATION NO. 28285
STATE OF COLORADO
09-13-19

REV: 3 09-13-19 C.IVIE (LATERAL CHANGE)



UELS, LLC
Corporate Office * 85 South 200 East
Vernal, UT 84078 * (435) 789-1017

SURVEYED BY	RYAN WILLIAMS, K.M.	04-05-19	SCALE
DRAWN BY	C.IVIE	04-08-19	1" = 1000'

WELL LOCATION PLAT

NOTE:
Distances referenced
on plat to section lines
are perpendicular.

LEGEND:

- = PROPOSED WELLHEAD.
- ◆ = PRODUCTION INTERVAL.
- = TARGET BOTTOM HOLE.
- ▲ = SECTION CORNERS LOCATED. (NAD 83)
- △ = SECTION CORNERS RE-ESTABLISHED.
(Not Set on Ground.) (NAD 83)

SURFACE LOCATION 1560' FSL 560' FEL	BEG. PROD. INTERVAL 300' FNL 5016' FSL 300' FEL	ENDING PROD. INTERVAL 300' FNL 5005' FSL 2340' FEL	TARGET BOTTOM HOLE 300' FNL 5005' FSL 2440' FEL
NAD 83 (SURFACE LOCATION) LATITUDE = 40°38'41.27" (40.644798°) LONGITUDE = 104°00'45.09" (104.012526°)	NAD 83 (BEG. PROD. INTERVAL) LATITUDE = 40°39'15.35" (40.654265°) LONGITUDE = 104°00'41.23" (104.011453°)	NAD 83 (ENDING PROD. INTERVAL) LATITUDE = 40°39'16.15" (40.654486°) LONGITUDE = 104°02'16.90" (104.038027°)	NAD 83 (TARGET BOTTOM HOLE) LATITUDE = 40°39'16.14" (40.654485°) LONGITUDE = 104°02'18.20" (104.038388°)
NAD 27 (SURFACE LOCATION) LATITUDE = 40°38'41.32" (40.644811°) LONGITUDE = 104°00'43.28" (104.012021°)	NAD 27 (BEG. PROD. INTERVAL) LATITUDE = 40°39'15.40" (40.654278°) LONGITUDE = 104°00'39.41" (104.010948°)	NAD 27 (ENDING PROD. INTERVAL) LATITUDE = 40°39'16.20" (40.654499°) LONGITUDE = 104°02'15.08" (104.037523°)	NAD 27 (TARGET BOTTOM HOLE) LATITUDE = 40°39'16.19" (40.654498°) LONGITUDE = 104°02'16.38" (104.037883°)
STATE PLANE NAD 83 (CO. NORTH) N: 1481204.29' E: 3412761.55'	STATE PLANE NAD 83 (CO. NORTH) N: 1484657.78' E: 3413001.41'	STATE PLANE NAD 83 (CO. NORTH) N: 1484615.51' E: 3405627.59'	STATE PLANE NAD 83 (CO. NORTH) N: 1484613.45' E: 3405527.61'
STATE PLANE NAD 27 (CO. NORTH) N: 481202.85' E: 2412912.62'	STATE PLANE NAD 27 (CO. NORTH) N: 484656.28' E: 2413152.44'	STATE PLANE NAD 27 (CO. NORTH) N: 484614.12' E: 2405778.39'	STATE PLANE NAD 27 (CO. NORTH) N: 484612.06' E: 2405678.41'