

# BONANZA CREEK ENERGY

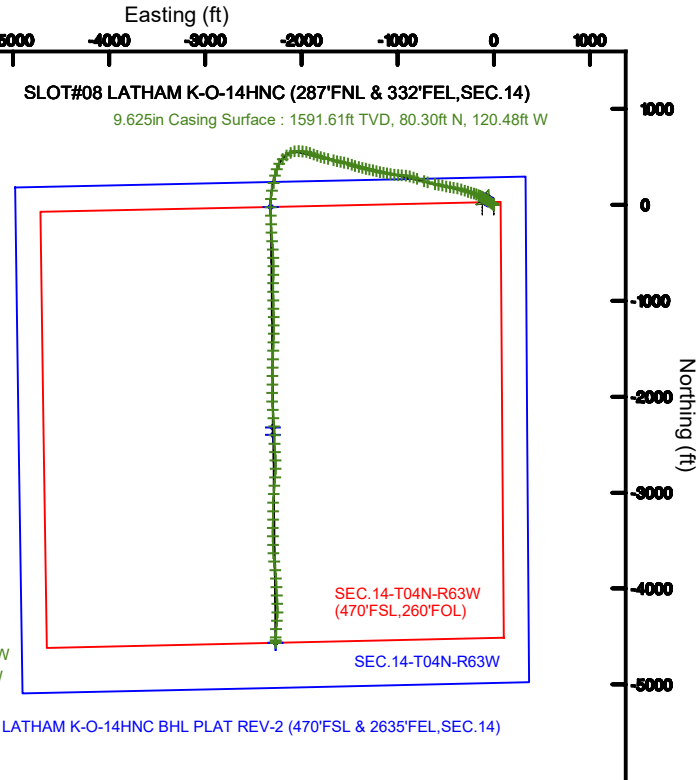
Location: COLORADO Slot: SLOT#08 LATHAM K-O-14HNC (287°FNL & 332°FEL, SEC.14)  
Field: WELD COUNTY (NAD83/TRUE) Well: LATHAM K-O-14HNC  
Facility: SEC.14-T04N-R63W Wellbore: LATHAM K-O-14HNC PWB  
05-123-49901-00

Plot reference wellpath is LATHAM K-O-14HNC (REV-D.0) PWP	Grid System: NAD83 / Lambert Colorado SP, Northern Zone (501), US feet
True vertical depths are referenced to AKITA 519 (4603.8'GL+17'KB@4620.8') (RKB)	North Reference: True north
Measured depths are referenced to AKITA 519 (4603.8'GL+17'KB@4620.8') (RKB)	Scale: True distance
AKITA 519 (4603.8'GL+17'KB@4620.8') (RKB) to Mean Sea Level: 4620.8 feet	Depths are in feet
Mean Sea Level to Ground level (At Slot: SLOT#08 LATHAM K-O-14HNC (287°FNL & 332°FEL, SEC.14)): 0 feet	Created by: doddanna on 2019-07-25
Coordinates are in feet referenced to Slot	Database: WellArchitectDB

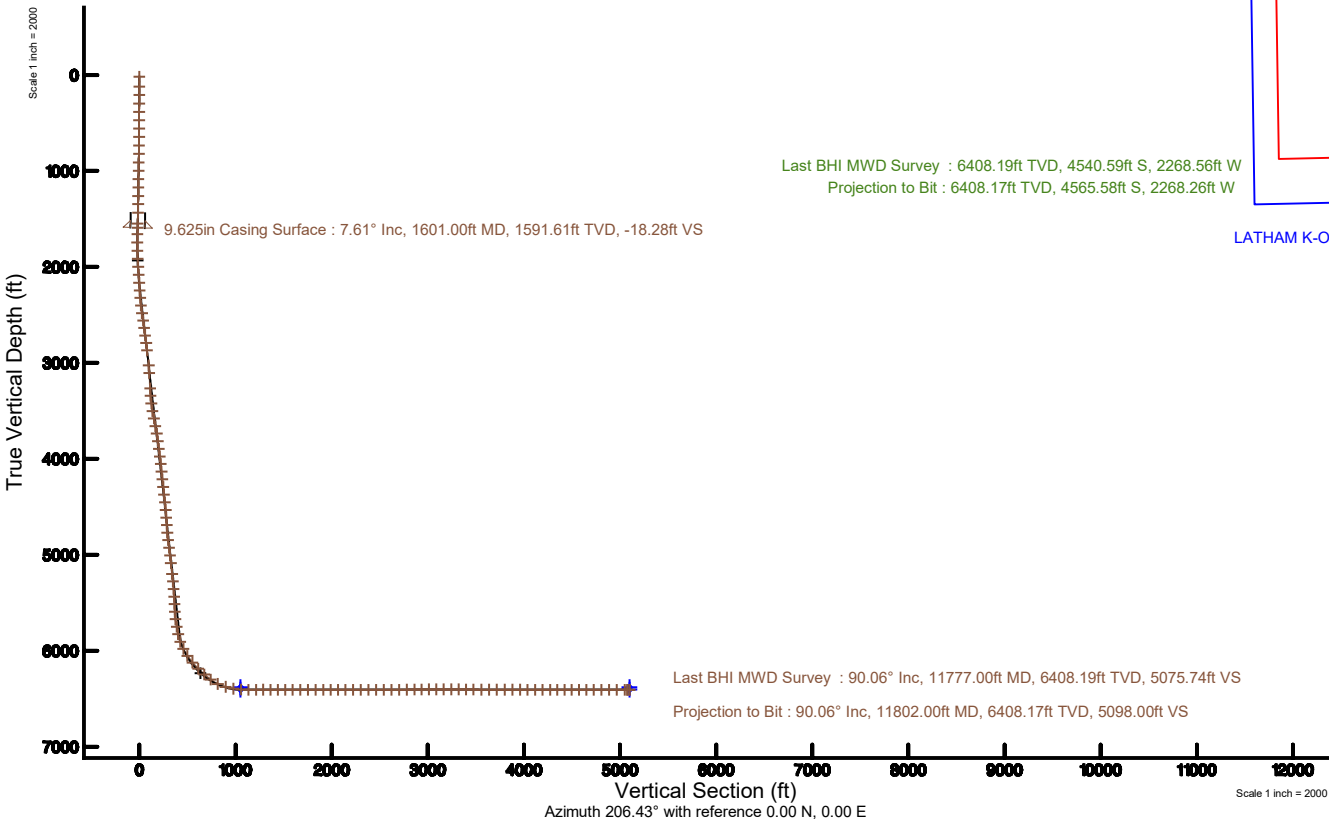


LATHAM K-O-14HNC LP PLAT REV-2 (260°FNL & 2653°FEL, SEC.14)

Last BHI MWD Survey : 6408.19ft TVD, 4540.59ft S, 2268.56ft W  
Projection to Bit : 6408.17ft TVD, 4565.58ft S, 2268.26ft W



LATHAM K-O-14HNC BHL PLAT REV-2 (470°FSL & 2635°FEL, SEC.14)



# Actual Wellpath Report

LATHAM K-O-14HNC AWP

Page 1 of 8



REFERENCE WELLPATH IDENTIFICATION			
Operator	BONANZA CREEK ENERGY	Slot	SLOT#08 LATHAM K-O-14HNC (287'FNL & 332'FEL, SEC.14)
Area	COLORADO	Well	LATHAM K-O-14HNC
Field	WELD COUNTY (NAD83/TRUE)	Wellbore	LATHAM K-O-14HNC AWB
Facility	SEC.14-T04N-R63W		

REPORT SETUP INFORMATION			
Projection System	NAD83 / Lambert Colorado SP, Northern Zone (501), US feet	Software System	WellArchitect® 5.1
North Reference	True	User	Doddanna
Scale	0.999958	Report Generated	7/25/2019 at 2:22:37 PM
Convergence at slot	0.71° East	Database/Source file	WellArchitectDB/LATHAM_K-O-14HNC_AWP.xml

WELLPATH LOCATION						
	Local coordinates		Grid coordinates		Geographic coordinates	
	North[ft]	East[ft]	Easting[US ft]	Northing[US ft]	Latitude	Longitude
Slot Location	-96.31	-152.48	3307537.83	1361043.04	40°19'09.169"N	104°23'49.423"W
Facility Reference Pt			3307689.09	1361141.24	40°19'10.121"N	104°23'47.454"W
Field Reference Pt			3224525.77	1254425.87	40°01'44.400"N	104°41'53.556"W

WELLPATH DATUM			
Calculation method	Minimum curvature	AKITA 519 (4603.8'GL+17'KB@4620.8') (RKB) to Facility Vertical Datum	4620.80ft
Horizontal Reference Pt	Slot	AKITA 519 (4603.8'GL+17'KB@4620.8') (RKB) to Mean Sea Level	4620.80ft
Vertical Reference Pt	AKITA 519 (4603.8'GL+17'KB@4620.8') (RKB)	AKITA 519 (4603.8'GL+17'KB@4620.8') (RKB) to Ground Level at Slot (SLOT#08 LATHAM K-O-14HNC (287'FNL & 332'FEL, SEC.14))	4620.80ft
MD Reference Pt	AKITA 519 (4603.8'GL+17'KB@4620.8') (RKB)	Section Origin	N 0.00, E 0.00 ft
Field Vertical Reference	Mean Sea Level	Section Azimuth	206.43°

# Actual Wellpath Report

LATHAM K-O-14HNC AWP

Page 2 of 8



**BAKER  
HUGHES**

REFERENCE WELLPATH IDENTIFICATION			
Operator	BONANZA CREEK ENERGY	Slot	SLOT#08 LATHAM K-O-14HNC (287'FNL & 332'FEL, SEC.14)
Area	COLORADO	Well	LATHAM K-O-14HNC
Field	WELD COUNTY (NAD83/TRUE)	Wellbore	LATHAM K-O-14HNC AWP
Facility	SEC.14-T04N-R63W		

## WELLPATH DATA (134 stations) † = interpolated/extrapolated station

MD [ft]	Inclination [°]	Azimuth [°]	TVD [ft]	Vert Sect [ft]	North [ft]	East [ft]	Latitude	Longitude	DLS [°/100ft]	Comments
0.00†	0.000	3.640	0.00	0.00	0.00	0.00	40°19'09.169"N	104°23'49.423"W	0.00	
17.00	0.000	3.640	17.00	0.00	0.00	0.00	40°19'09.169"N	104°23'49.423"W	0.00	
121.00	0.330	3.640	121.00	-0.28	0.30	0.02	40°19'09.172"N	104°23'49.422"W	0.32	
209.00	0.940	339.640	208.99	-1.00	1.23	-0.22	40°19'09.181"N	104°23'49.425"W	0.74	
297.00	0.620	16.670	296.99	-1.97	2.36	-0.33	40°19'09.193"N	104°23'49.427"W	0.66	
384.00	1.070	298.940	383.98	-2.47	3.21	-0.91	40°19'09.201"N	104°23'49.434"W	1.28	
472.00	3.890	295.420	471.89	-2.45	4.88	-4.32	40°19'09.218"N	104°23'49.478"W	3.21	
558.00	3.920	295.980	557.69	-2.38	7.42	-9.60	40°19'09.243"N	104°23'49.546"W	0.06	
647.00	3.740	296.660	646.49	-2.36	10.06	-14.93	40°19'09.269"N	104°23'49.615"W	0.21	
736.00	4.810	305.920	735.24	-2.99	13.55	-20.54	40°19'09.303"N	104°23'49.688"W	1.43	
824.00	6.670	307.530	822.80	-4.58	18.83	-27.59	40°19'09.355"N	104°23'49.779"W	2.12	
912.00	6.380	306.180	910.23	-6.40	24.83	-35.59	40°19'09.415"N	104°23'49.882"W	0.37	
1001.00	8.780	304.280	998.44	-8.16	31.58	-45.19	40°19'09.481"N	104°23'50.006"W	2.71	
1088.00	10.110	300.930	1084.26	-9.67	39.24	-57.23	40°19'09.557"N	104°23'50.161"W	1.65	
1177.00	9.400	300.740	1171.97	-10.83	46.97	-70.18	40°19'09.633"N	104°23'50.328"W	0.80	
1267.00	8.900	300.260	1260.83	-11.84	54.24	-82.51	40°19'09.705"N	104°23'50.488"W	0.56	
1354.00	8.350	299.210	1346.84	-12.60	60.71	-93.83	40°19'09.769"N	104°23'50.634"W	0.66	
1442.00	8.060	306.580	1433.95	-14.00	67.50	-104.36	40°19'09.836"N	104°23'50.770"W	1.24	
1557.00	6.940	309.580	1547.96	-17.00	76.74	-116.19	40°19'09.928"N	104°23'50.923"W	1.03	
1668.00	8.627	310.273	1657.93	-20.52	86.39	-127.71	40°19'10.023"N	104°23'51.071"W	1.52	
1756.00	10.833	294.252	1744.68	-21.78	94.06	-140.29	40°19'10.099"N	104°23'51.234"W	3.95	
1844.00	14.250	288.833	1830.57	-20.04	100.95	-158.09	40°19'10.167"N	104°23'51.463"W	4.10	
1932.00	16.276	286.383	1915.46	-16.45	107.93	-180.18	40°19'10.236"N	104°23'51.749"W	2.42	
2020.00	18.840	288.090	1999.36	-12.24	115.82	-205.52	40°19'10.314"N	104°23'52.076"W	2.97	
2108.00	21.250	286.940	2082.02	-7.55	124.88	-234.28	40°19'10.403"N	104°23'52.447"W	2.77	
2197.00	23.240	287.530	2164.39	-2.18	134.87	-266.46	40°19'10.502"N	104°23'52.862"W	2.25	
2285.00	25.770	288.750	2244.46	3.07	146.25	-301.13	40°19'10.614"N	104°23'53.310"W	2.93	
2373.00	26.870	287.450	2323.33	8.73	158.36	-338.22	40°19'10.734"N	104°23'53.789"W	1.41	
2461.00	26.910	282.770	2401.83	16.53	168.73	-376.62	40°19'10.837"N	104°23'54.285"W	2.41	
2550.00	27.720	278.730	2480.91	27.58	176.32	-416.72	40°19'10.912"N	104°23'54.802"W	2.27	

# Actual Wellpath Report

LATHAM K-O-14HNC AWP

Page 3 of 8



**BAKER  
HUGHES**

REFERENCE WELLPATH IDENTIFICATION			
Operator	BONANZA CREEK ENERGY	Slot	SLOT#08 LATHAM K-O-14HNC (287'FNL & 332'FEL,SEC.14)
Area	COLORADO	Well	LATHAM K-O-14HNC
Field	WELD COUNTY (NAD83/TRUE)	Wellbore	LATHAM K-O-14HNC AWP
Facility	SEC.14-T04N-R63W		

## WELLPATH DATA (134 stations)

MD [ft]	Inclination [°]	Azimuth [°]	TVD [ft]	Vert Sect [ft]	North [ft]	East [ft]	Latitude	Longitude	DLS [°/100ft]	Comments
2637.00	26.900	279.270	2558.21	39.54	182.56	-456.15	40°19'10.973"N	104°23'55.311"W	0.98	
2724.00	27.850	283.880	2635.48	49.76	190.61	-495.31	40°19'11.053"N	104°23'55.817"W	2.67	
2813.00	26.990	278.970	2714.49	60.34	198.75	-535.44	40°19'11.133"N	104°23'56.335"W	2.72	
2900.00	26.600	283.690	2792.16	70.56	206.44	-573.87	40°19'11.209"N	104°23'56.831"W	2.49	
2987.00	26.770	281.780	2869.89	79.81	215.05	-611.98	40°19'11.294"N	104°23'57.323"W	1.01	
3163.00	26.170	285.320	3027.45	97.31	233.39	-688.22	40°19'11.476"N	104°23'58.307"W	0.96	
3251.00	25.790	288.430	3106.56	103.72	244.57	-725.09	40°19'11.586"N	104°23'58.784"W	1.61	
3427.00	26.030	290.980	3264.88	112.71	270.50	-797.48	40°19'11.842"N	104°23'59.718"W	0.65	
3515.00	26.920	289.260	3343.65	117.03	283.99	-834.31	40°19'11.975"N	104°24'00.194"W	1.33	
3604.00	27.970	282.830	3422.65	124.45	295.27	-873.69	40°19'12.087"N	104°24'00.702"W	3.53	
3693.00	27.760	277.150	3501.34	136.21	302.49	-914.62	40°19'12.158"N	104°24'01.230"W	2.99	
3782.00	27.190	273.160	3580.31	151.08	306.19	-955.49	40°19'12.195"N	104°24'01.758"W	2.16	
3870.00	26.610	272.730	3658.79	166.95	308.24	-995.25	40°19'12.215"N	104°24'02.271"W	0.70	
3957.00	26.450	277.880	3736.64	180.95	311.82	-1033.91	40°19'12.250"N	104°24'02.770"W	2.65	
4046.00	26.240	281.950	3816.40	192.17	318.61	-1072.80	40°19'12.318"N	104°24'03.272"W	2.04	
4134.00	25.600	280.880	3895.55	202.13	326.23	-1110.50	40°19'12.393"N	104°24'03.759"W	0.90	
4222.00	25.400	280.670	3974.97	212.35	333.31	-1147.71	40°19'12.463"N	104°24'04.240"W	0.25	
4309.00	24.870	282.370	4053.74	221.86	340.69	-1183.92	40°19'12.536"N	104°24'04.707"W	1.03	
4397.00	25.070	282.980	4133.51	230.70	348.84	-1220.16	40°19'12.616"N	104°24'05.175"W	0.37	
4485.00	25.670	284.420	4213.03	239.00	357.77	-1256.79	40°19'12.704"N	104°24'05.648"W	0.98	
4574.00	25.720	282.480	4293.23	247.66	366.75	-1294.32	40°19'12.793"N	104°24'06.132"W	0.95	
4661.00	24.800	281.950	4371.91	256.78	374.60	-1330.60	40°19'12.871"N	104°24'06.601"W	1.09	
4750.00	25.610	283.240	4452.43	265.83	382.87	-1367.59	40°19'12.952"N	104°24'07.078"W	1.10	
4838.00	26.220	286.110	4531.59	273.65	392.63	-1404.78	40°19'13.049"N	104°24'07.558"W	1.58	
4927.00	25.110	288.770	4611.81	279.69	404.16	-1441.55	40°19'13.163"N	104°24'08.033"W	1.80	
5014.00	26.800	289.440	4690.03	284.54	416.63	-1477.52	40°19'13.286"N	104°24'08.498"W	1.97	
5103.00	27.170	286.140	4769.34	290.61	428.95	-1515.97	40°19'13.408"N	104°24'08.994"W	1.73	
5191.00	27.040	280.460	4847.69	299.70	438.17	-1554.94	40°19'13.499"N	104°24'09.497"W	2.94	
5278.00	25.830	281.160	4925.60	310.14	445.43	-1592.99	40°19'13.570"N	104°24'09.988"W	1.44	
5366.00	24.530	284.510	5005.24	318.96	453.72	-1629.48	40°19'13.652"N	104°24'10.459"W	2.19	

# Actual Wellpath Report

LATHAM K-O-14HNC AWP

Page 4 of 8



**BAKER  
HUGHES**

REFERENCE WELLPATH IDENTIFICATION			
Operator	BONANZA CREEK ENERGY	Slot	SLOT#08 LATHAM K-O-14HNC (287'FNL & 332'FEL,SEC.14)
Area	COLORADO	Well	LATHAM K-O-14HNC
Field	WELD COUNTY (NAD83/TRUE)	Wellbore	LATHAM K-O-14HNC AWP
Facility	SEC.14-T04N-R63W		

## WELLPATH DATA (134 stations)

MD [ft]	Inclination [°]	Azimuth [°]	TVD [ft]	Vert Sect [ft]	North [ft]	East [ft]	Latitude	Longitude	DLS [°/100ft]	Comments
5455.00	27.150	282.800	5085.33	327.56	462.85	-1667.18	40°19'13.743"N	104°24'10.946"W	3.06	
5583.00	27.330	284.600	5199.14	340.47	476.73	-1724.09	40°19'13.880"N	104°24'11.681"W	0.66	
5670.00	26.780	284.610	5276.62	348.57	486.70	-1762.39	40°19'13.978"N	104°24'12.175"W	0.63	
5759.00	26.060	286.690	5356.32	355.99	497.38	-1800.51	40°19'14.084"N	104°24'12.668"W	1.32	
5847.00	25.830	289.240	5435.46	361.66	509.24	-1837.13	40°19'14.201"N	104°24'13.140"W	1.29	
5935.00	26.500	291.810	5514.44	365.64	522.86	-1873.46	40°19'14.335"N	104°24'13.609"W	1.50	
6024.00	27.450	292.040	5593.76	368.81	537.93	-1910.91	40°19'14.484"N	104°24'14.093"W	1.07	
6112.00	27.670	281.820	5671.82	375.51	549.73	-1949.73	40°19'14.601"N	104°24'14.594"W	5.37	
6201.00	27.270	274.170	5750.81	388.45	555.45	-1990.31	40°19'14.657"N	104°24'15.118"W	3.99	
6288.00	27.690	274.880	5827.99	403.43	558.62	-2030.33	40°19'14.689"N	104°24'15.635"W	0.61	
6376.00	28.980	256.810	5905.59	424.57	555.49	-2071.53	40°19'14.658"N	104°24'16.166"W	9.82	
6464.00	32.500	242.480	5981.31	457.33	539.68	-2113.32	40°19'14.501"N	104°24'16.706"W	9.21	
6552.00	36.890	232.290	6053.71	500.27	512.56	-2155.24	40°19'14.233"N	104°24'17.247"W	8.25	
6641.00	41.040	223.130	6122.95	552.36	474.85	-2196.40	40°19'13.861"N	104°24'17.778"W	7.97	
6730.00	45.190	209.210	6188.06	612.04	425.84	-2231.88	40°19'13.376"N	104°24'18.236"W	11.64	
6816.00	48.550	198.180	6246.94	674.53	368.48	-2256.87	40°19'12.810"N	104°24'18.559"W	10.13	
6904.00	54.920	191.700	6301.45	742.11	301.77	-2274.49	40°19'12.150"N	104°24'18.786"W	9.26	
6993.00	65.240	191.610	6345.78	816.59	226.33	-2290.05	40°19'11.405"N	104°24'18.987"W	11.60	
7081.00	74.670	192.600	6375.91	896.61	145.59	-2307.39	40°19'10.607"N	104°24'19.211"W	10.77	
7169.00	79.820	182.410	6395.38	977.63	60.64	-2318.50	40°19'09.767"N	104°24'19.354"W	12.72	
7257.00	87.690	180.490	6404.95	1056.85	-26.74	-2320.70	40°19'08.904"N	104°24'19.383"W	9.20	
7345.00	90.150	178.220	6406.60	1135.18	-114.70	-2319.71	40°19'08.035"N	104°24'19.370"W	3.80	
7434.00	90.310	177.440	6406.25	1213.32	-203.64	-2316.34	40°19'07.156"N	104°24'19.326"W	0.89	
7521.00	89.940	175.980	6406.06	1288.88	-290.49	-2311.35	40°19'06.298"N	104°24'19.262"W	1.73	
7610.00	90.000	175.810	6406.10	1365.54	-379.26	-2304.98	40°19'05.420"N	104°24'19.179"W	0.20	
7697.00	89.970	176.030	6406.13	1440.49	-466.04	-2298.79	40°19'04.563"N	104°24'19.099"W	0.26	
7786.00	90.000	177.610	6406.15	1517.87	-554.90	-2293.85	40°19'03.685"N	104°24'19.035"W	1.78	
7873.00	89.970	179.680	6406.17	1594.83	-641.87	-2291.79	40°19'02.825"N	104°24'19.009"W	2.38	
7962.00	89.970	181.320	6406.22	1674.87	-730.87	-2292.57	40°19'01.946"N	104°24'19.019"W	1.84	
8050.00	90.000	180.660	6406.24	1754.34	-818.85	-2294.09	40°19'01.077"N	104°24'19.038"W	0.75	

# Actual Wellpath Report

LATHAM K-O-14HNC AWP

Page 5 of 8



**BAKER  
HUGHES**

## REFERENCE WELLPATH IDENTIFICATION

Operator	BONANZA CREEK ENERGY	Slot	SLOT#08 LATHAM K-O-14HNC (287'FNL & 332'FEL,SEC.14)
Area	COLORADO	Well	LATHAM K-O-14HNC
Field	WELD COUNTY (NAD83/TRUE)	Wellbore	LATHAM K-O-14HNC AWP
Facility	SEC.14-T04N-R63W		

## WELLPATH DATA (134 stations)

MD [ft]	Inclination [°]	Azimuth [°]	TVD [ft]	Vert Sect [ft]	North [ft]	East [ft]	Latitude	Longitude	DLS [°/100ft]	Comments
8139.00	89.970	179.500	6406.27	1834.09	-907.85	-2294.22	40°19'00.197"N	104°24'19.040"W	1.30	
8227.00	90.060	179.130	6406.24	1912.42	-995.85	-2293.16	40°18'59.328"N	104°24'19.026"W	0.43	
8314.00	90.000	178.430	6406.20	1989.48	-1082.82	-2291.31	40°18'58.468"N	104°24'19.002"W	0.81	
8402.00	90.000	178.850	6406.20	2067.34	-1170.80	-2289.22	40°18'57.599"N	104°24'18.975"W	0.48	
8488.00	90.030	179.940	6406.17	2143.94	-1256.79	-2288.31	40°18'56.749"N	104°24'18.963"W	1.27	
8576.00	89.910	180.650	6406.22	2222.94	-1344.79	-2288.77	40°18'55.879"N	104°24'18.969"W	0.82	
8665.00	89.910	181.590	6406.36	2303.40	-1433.77	-2290.51	40°18'55.000"N	104°24'18.991"W	1.06	
8752.00	90.000	182.570	6406.43	2382.66	-1520.72	-2293.66	40°18'54.141"N	104°24'19.032"W	1.13	
8841.00	89.940	181.950	6406.48	2463.86	-1609.65	-2297.17	40°18'53.262"N	104°24'19.077"W	0.70	
8929.00	89.940	182.220	6406.57	2544.03	-1697.59	-2300.38	40°18'52.393"N	104°24'19.118"W	0.31	
9017.00	89.880	179.950	6406.71	2623.56	-1785.57	-2302.04	40°18'51.524"N	104°24'19.140"W	2.58	
9105.00	89.850	180.650	6406.91	2702.56	-1873.56	-2302.50	40°18'50.654"N	104°24'19.145"W	0.80	
9193.00	91.450	181.780	6405.91	2782.17	-1961.53	-2304.37	40°18'49.785"N	104°24'19.169"W	2.23	
9281.00	91.200	178.040	6403.88	2860.88	-2049.49	-2304.23	40°18'48.916"N	104°24'19.168"W	4.26	
9368.00	90.090	174.770	6402.90	2936.19	-2136.30	-2298.78	40°18'48.058"N	104°24'19.097"W	3.97	
9457.00	90.120	174.950	6402.74	3012.02	-2224.95	-2290.80	40°18'47.182"N	104°24'18.994"W	0.21	
9545.00	89.910	176.800	6402.71	3087.79	-2312.71	-2284.47	40°18'46.315"N	104°24'18.912"W	2.12	
9633.00	90.150	180.100	6402.67	3165.50	-2400.67	-2282.09	40°18'45.445"N	104°24'18.881"W	3.76	
9722.00	90.150	177.750	6402.43	3244.43	-2489.65	-2280.42	40°18'44.566"N	104°24'18.860"W	2.64	
9809.00	89.450	175.820	6402.74	3320.04	-2576.51	-2275.54	40°18'43.708"N	104°24'18.797"W	2.36	
9898.00	89.260	177.310	6403.74	3397.22	-2665.34	-2270.21	40°18'42.830"N	104°24'18.728"W	1.69	
9985.00	89.260	181.030	6404.86	3474.53	-2752.31	-2268.95	40°18'41.971"N	104°24'18.711"W	4.28	
10074.00	89.510	185.080	6405.82	3556.21	-2841.16	-2273.69	40°18'41.093"N	104°24'18.772"W	4.56	
10162.00	90.340	185.290	6405.93	3638.23	-2928.80	-2281.65	40°18'40.227"N	104°24'18.875"W	0.97	
10249.00	90.030	184.510	6405.65	3719.16	-3015.48	-2289.08	40°18'39.370"N	104°24'18.971"W	0.96	
10337.00	89.630	182.120	6405.92	3800.09	-3103.32	-2294.17	40°18'38.502"N	104°24'19.036"W	2.75	
10427.00	90.460	180.120	6405.84	3881.44	-3193.30	-2295.93	40°18'37.613"N	104°24'19.059"W	2.41	
10514.00	89.450	180.170	6405.91	3959.45	-3280.30	-2296.15	40°18'36.753"N	104°24'19.062"W	1.16	
10602.00	89.540	181.610	6406.69	4038.84	-3368.28	-2297.51	40°18'35.884"N	104°24'19.079"W	1.64	
10690.00	90.000	177.880	6407.04	4117.46	-3456.26	-2297.12	40°18'35.014"N	104°24'19.074"W	4.27	

# Actual Wellpath Report

LATHAM K-O-14HNC AWP

Page 6 of 8



REFERENCE WELLPATH IDENTIFICATION			
Operator	BONANZA CREEK ENERGY	Slot	SLOT#08 LATHAM K-O-14HNC (287'FNL & 332'FEL,SEC.14)
Area	COLORADO	Well	LATHAM K-O-14HNC
Field	WELD COUNTY (NAD83/TRUE)	Wellbore	LATHAM K-O-14HNC AWB
Facility	SEC.14-T04N-R63W		

WELLPATH DATA (134 stations)										
MD [ft]	Inclination [°]	Azimuth [°]	TVD [ft]	Vert Sect [ft]	North [ft]	East [ft]	Latitude	Longitude	DLS [°/100ft]	Comments
10778.00	89.820	178.700	6407.18	4195.06	-3544.22	-2294.49	40°18'34.145"N	104°24'19.040"W	0.95	
10866.00	90.000	177.090	6407.32	4272.36	-3632.16	-2291.26	40°18'33.276"N	104°24'18.998"W	1.84	
10954.00	90.090	172.990	6407.25	4347.47	-3719.81	-2283.66	40°18'32.410"N	104°24'18.900"W	4.66	
11043.00	89.910	173.040	6407.25	4421.76	-3808.15	-2272.83	40°18'31.537"N	104°24'18.760"W	0.21	
11131.00	89.880	175.720	6407.41	4496.34	-3895.72	-2264.22	40°18'30.672"N	104°24'18.649"W	3.05	
11219.00	89.880	179.740	6407.59	4573.52	-3983.63	-2260.73	40°18'29.803"N	104°24'18.604"W	4.57	
11306.00	90.000	175.420	6407.69	4649.70	-4070.54	-2257.06	40°18'28.944"N	104°24'18.556"W	4.97	
11394.00	89.910	177.180	6407.76	4725.81	-4158.35	-2251.38	40°18'28.076"N	104°24'18.483"W	2.00	
11483.00	89.820	181.280	6407.96	4804.95	-4247.32	-2250.18	40°18'27.197"N	104°24'18.467"W	4.61	
11571.00	89.720	185.290	6408.32	4885.85	-4335.16	-2255.23	40°18'26.329"N	104°24'18.532"W	4.56	
11658.00	90.150	185.740	6408.42	4967.12	-4421.76	-2263.59	40°18'25.473"N	104°24'18.640"W	0.72	
11746.00	90.090	180.730	6408.23	5047.98	-4509.59	-2268.55	40°18'24.605"N	104°24'18.704"W	5.69	
11777.00	90.060	179.310	6408.19	5075.74	-4540.59	-2268.56	40°18'24.299"N	104°24'18.704"W	4.58	Last BHI MWD Survey
11802.00	90.060	179.310	6408.17	5098.00	-4565.58	-2268.26	40°18'24.052"N	104°24'18.700"W	0.00	Projection to Bit

HOLE & CASING SECTIONS									
- Ref Wellbore: LATHAM K-O-14HNC AWB					Ref Wellpath: LATHAM K-O-14HNC AWP				
String/Diameter	Start MD [ft]	End MD [ft]	Interval [ft]	Start TVD [ft]	End TVD [ft]	Start N/S [ft]	Start E/W [ft]	End N/S [ft]	End E/W [ft]
9.625in Casing Surface	17.00	1601.00	1584.00	17.00	1591.61	0.00	0.00	80.30	-120.48

# Actual Wellpath Report

LATHAM K-O-14HNC AWP

Page 7 of 8



REFERENCE WELLPATH IDENTIFICATION			
Operator	BONANZA CREEK ENERGY	Slot	SLOT#08 LATHAM K-O-14HNC (287'FNL & 332'FEL,SEC.14)
Area	COLORADO	Well	LATHAM K-O-14HNC
Field	WELD COUNTY (NAD83/TRUE)	Wellbore	LATHAM K-O-14HNC AWB
Facility	SEC.14-T04N-R63W		

TARGETS								
Name	TVD [ft]	North [ft]	East [ft]	Grid East [US ft]	Grid North [US ft]	Latitude	Longitude	Shape
LATHAM K-O-14HNC BHL PLAT (470'FSL & 2635'FEL,SEC.14)	6380.80	-4565.42	-2269.15	3305325.74	1356449.96	40°18'24.054"N	104°24'18.712"W	point
LATHAM K-O-14HNC LP PLAT (260'FNL & 2653'FEL,SEC.14)	6380.80	-22.29	-2320.29	3305218.09	1360991.90	40°19'08.948"N	104°24'19.377"W	point
LATHAM K-O-14HNC BHL PLAT REV-2 (470'FSL & 2635'FEL,SEC.14)	6405.00	-4565.42	-2269.15	3305325.74	1356449.96	40°18'24.054"N	104°24'18.712"W	point
LATHAM K-O-14HNC LP PLAT REV-2 (260'FNL & 2653'FEL,SEC.14)	6405.00	-22.29	-2320.29	3305218.10	1360991.90	40°19'08.948"N	104°24'19.377"W	point
SEC.14-T04N-R63W (470'FSL,260'FOL)	16619.80	-2319.91	-2297.20	3305269.76	1358694.84	40°18'46.243"N	104°24'19.076"W	polygon
SEC.14-T04N-R63W	16620.80	-2398.89	-2296.01	3305271.94	1358615.89	40°18'45.463"N	104°24'19.061"W	polygon

WELLPATH COMPOSITION - Ref Wellbore: LATHAM K-O-14HNC AWB					Ref Wellpath: LATHAM K-O-14HNC AWP	
Start MD [ft]	End MD [ft]	Positional Uncertainty Model	Log Name/Comment		Wellbore	
17.00	1557.00	BHI NaviTrak (Rotating)	BHI NAVITRAK MWD 13.5" (ROTATING)<121-1557>		LATHAM K-O-14HNC AWB	
1557.00	11777.00	BHI AutoTrak Curve (Short)	BHI ATC 8.5" (SHORT)<1668-11777>		LATHAM K-O-14HNC AWB	
11777.00	11802.00	Blind Drilling (std)	Projection to bit		LATHAM K-O-14HNC AWB	



# Actual Wellpath Report

LATHAM K-O-14HNC AWP

Page 8 of 8



REFERENCE WELLPATH IDENTIFICATION			
Operator	BONANZA CREEK ENERGY	Slot	SLOT#08 LATHAM K-O-14HNC (287'FNL & 332'FEL,SEC.14)
Area	COLORADO	Well	LATHAM K-O-14HNC
Field	WELD COUNTY (NAD83/TRUE)	Wellbore	LATHAM K-O-14HNC AWB
Facility	SEC.14-T04N-R63W		

WELLPATH COMMENTS				
MD [ft]	Inclination [°]	Azimuth [°]	TVD [ft]	Comment
11777.00	90.060	179.310	6408.19	Last BHI MWD Survey
11802.00	90.060	179.310	6408.17	Projection to Bit