

SAMPLE ID@DEPTH BELOW GROUND SURFACE
 SAMPLE DATE
 B: BENZENE IN MILLIGRAMS PER KILOGRAM (mg/kg)
 T: TOLUENE (mg/kg)
 E: ETHYLBENZENE (mg/kg)
 X: TOTAL XYLENES (mg/kg)
 TPH: TOTAL PETROLEUM HYDROCARBONS (mg/kg)
 EC: ELECTRICAL CONDUCTIVITY IN
 MILLIMHOS PER CENTIMETER (MMHOS/CM)
 SAR: SODIUM ADSORPTION RATIO (UNITLESS)
 pH: SCIENTIFIC UNITS
BOLD: INDICATES RESULT EXCEEDS THE
 APPLICABLE COGCC TABLE 910-1 CONCENTRATION LEVEL
 <: INDICATES RESULT IS LESS THAN THE
 LABORATORY REPORTING LIMIT

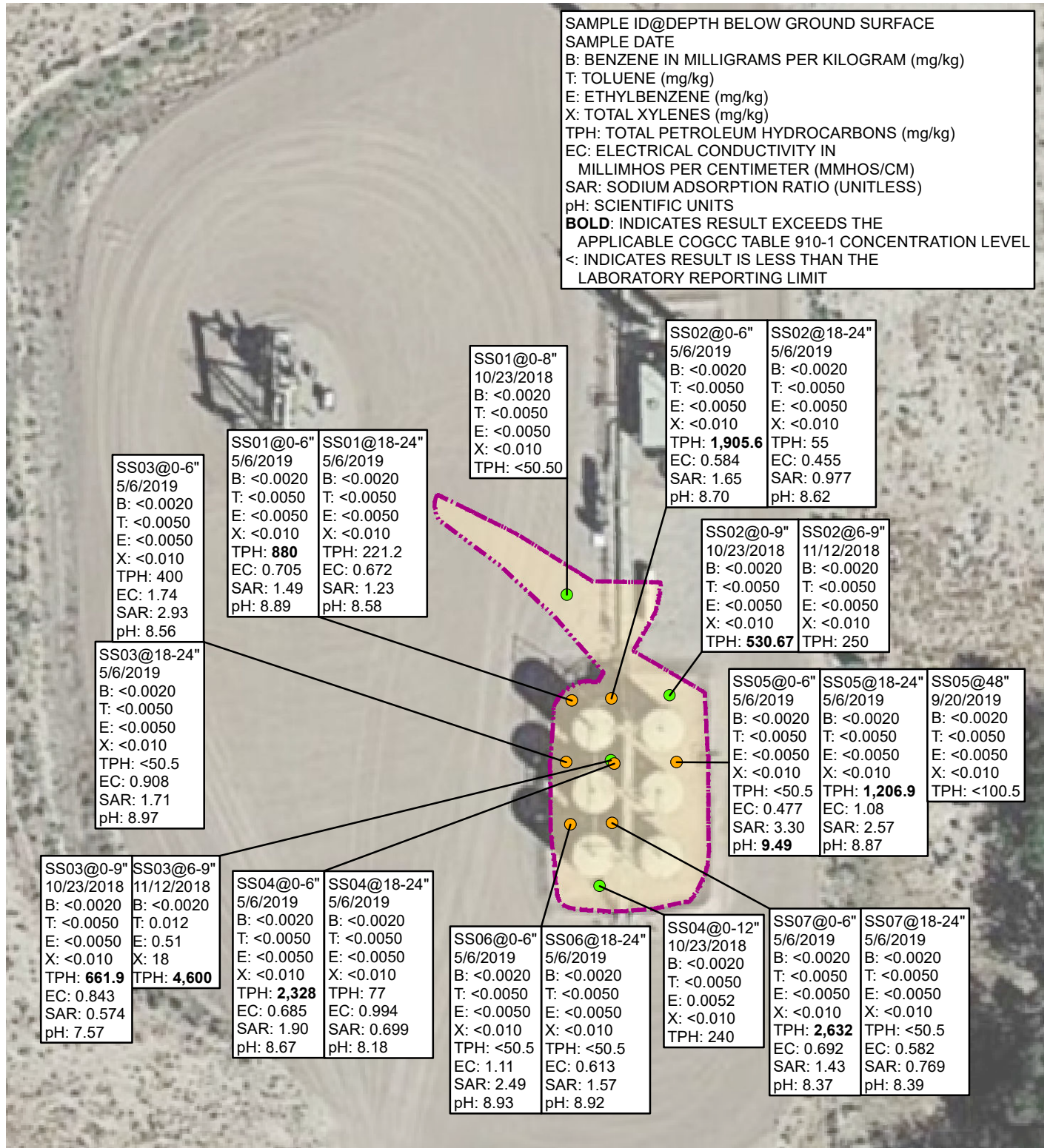


IMAGE COURTESY OF GOOGLE EARTH 2013

LEGEND

● SOIL SAMPLE 2018

● SOIL SAMPLE 2019

APPROXIMATE AREA OF IMPACT

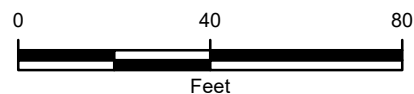


FIGURE 3
 SOIL ANALYTICAL RESULTS
 CRITTER CREEK 9-15H
 SESE SEC 15-T11N-R63W
 WELD COUNTY, COLORADO
 HIGHPOINT RESOURCES

