

Pulsed Neutron Emulated OH Log

Company Laramie Energy LLC
Well CC Federal 0697-03-01W
Field Grand Valley
County Garfield State Colorado

Location: API #: 05-045-23992

SEC 4 TWP 6S RGE 9TW

Other Services
RBL

Permanent Datum
Log Measured From
Drilling Measured From

Ground Level
Kelly Bushing
Kelly Bushing

Elevation
8609'
8639'
8638'
8609'

Date 20-AUG-2019

Run Number	---			
Depth Driller	---			
Depth Logger	---			
Bottom Logged Interval	---			
Top Log Interval	---			
Open Hole Size	8.750"			
Type Fluid	Water			
Density / Viscosity	8.34 lb/gal			
Max. Recorded Temp.	---			
Estimated Cement Top	---			
Time Well Ready	---			
Time Logger on Bottom	---			
Equipment Number	HD-0359			
Location	Grand Junction, CO			
Recorded By	Z. Fisher			
Witnessed By	---			
Borehole Record				
Run Number	Bit	From	To	Size
				Weight
				From
				To
Tubing Record				
Casing Record	Size (in)	Wgt (lbs/ft)	Grade	Top
Surface Casing	9 5/8	36	J-55	Surface
Intermediate #1	4 1/2	11.6	P-110	Surface
Intermediate #2				
Inner				

<<< Fold Here >>>

All interpretations are opinions based on inferences from electrical or other measurements and we cannot and do not guarantee the accuracy or correctness of any interpretation, and we shall not, except in the case of gross or willful negligence on our part, be liable or responsible for any loss, costs, damages, or expenses incurred or sustained by anyone resulting from any interpretation made by any of our officers, agents or employees. These interpretations are also subject to our general terms and conditions set out in our current Price Schedule.

Comments

This well is an Offset Well
Depth referenced to Reliance RBL dated 17-AUG-2019
Reliance Hunter RAS PN data was collected on this well
Training Well: CC 0697-04-08E
TW models were built using Schlumberger OH provided by the client and
Reliance Hunter PN data
Density Porosity Matrix = 2.68 g/cc
Emulation results may be affected by areas of poor bond
Emulation results may be affected by washouts and quality of OH data
Thank you for choosing Reliance Oilfield Services, LLC!

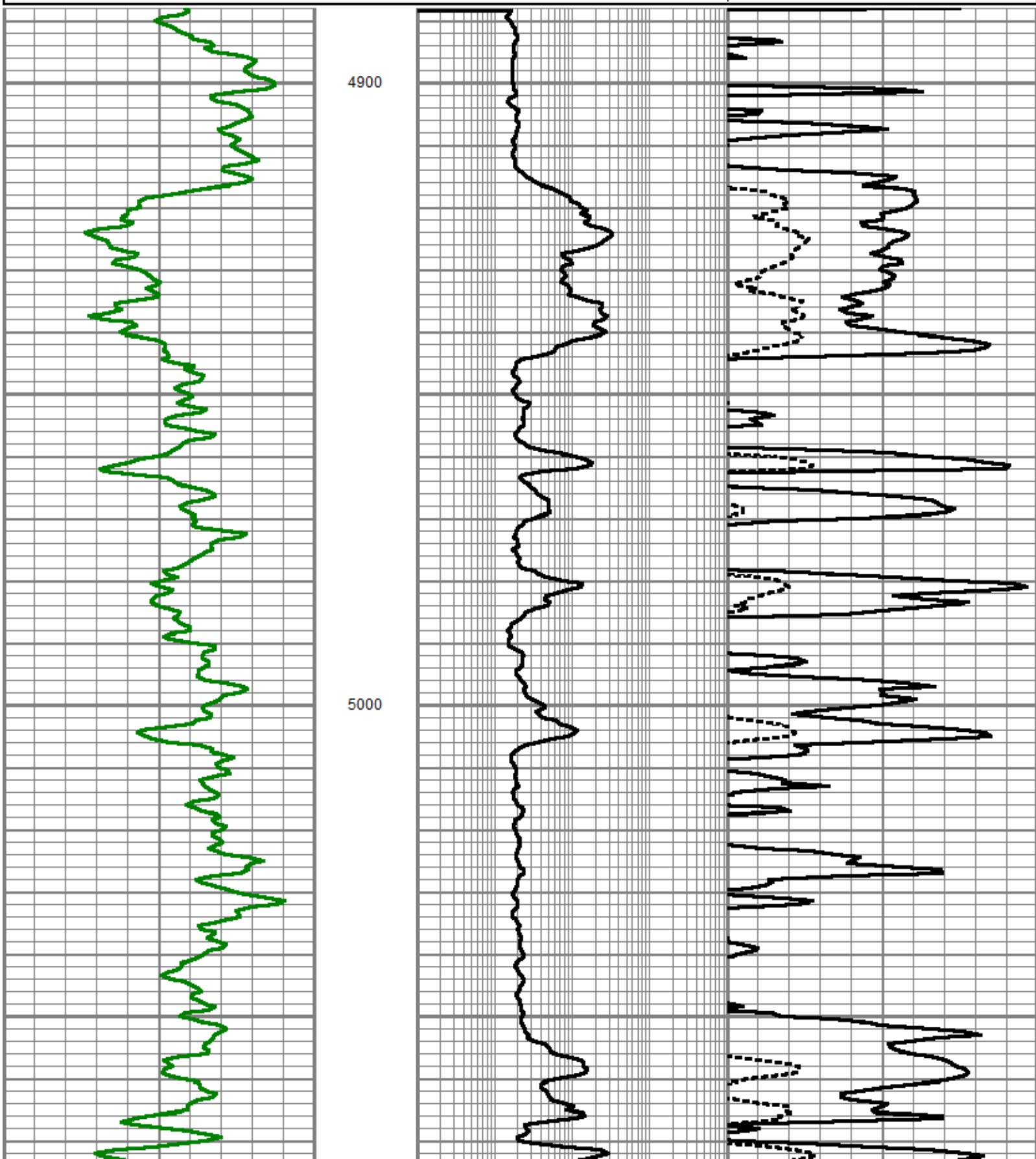
Database File	laramie_cc federal 0697-03-01w_pn_8-20-19\processed_laramie energy_cc federal 0697-03-01w_pn_08-20-19.db
Dataset Pathname	emulation2/merge1
Presentation Format	ros_emulation_output
Dataset Creation	Mon Sep 09 06:13:30 2019
Charted by	Depth in Feet scaled 1:240

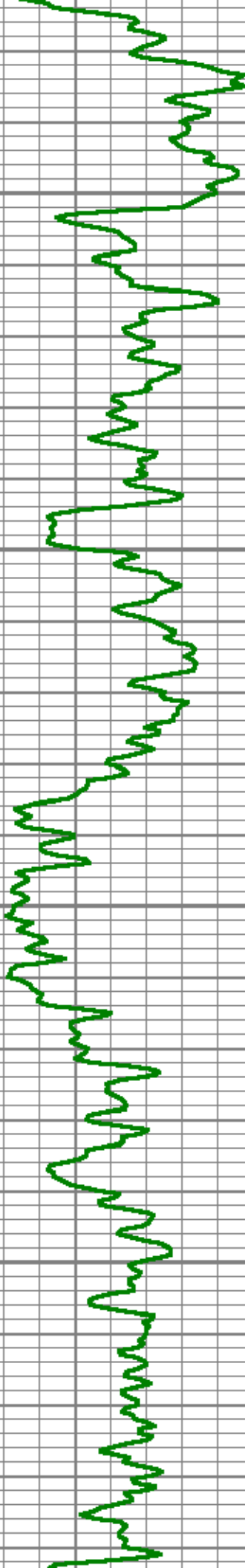
0 Normalized Gamma Ray (GAPI) 150

0.2 Emulated Resistivity (Ohm-m) 2000

0.3 Emulated Density Porosity -0.1

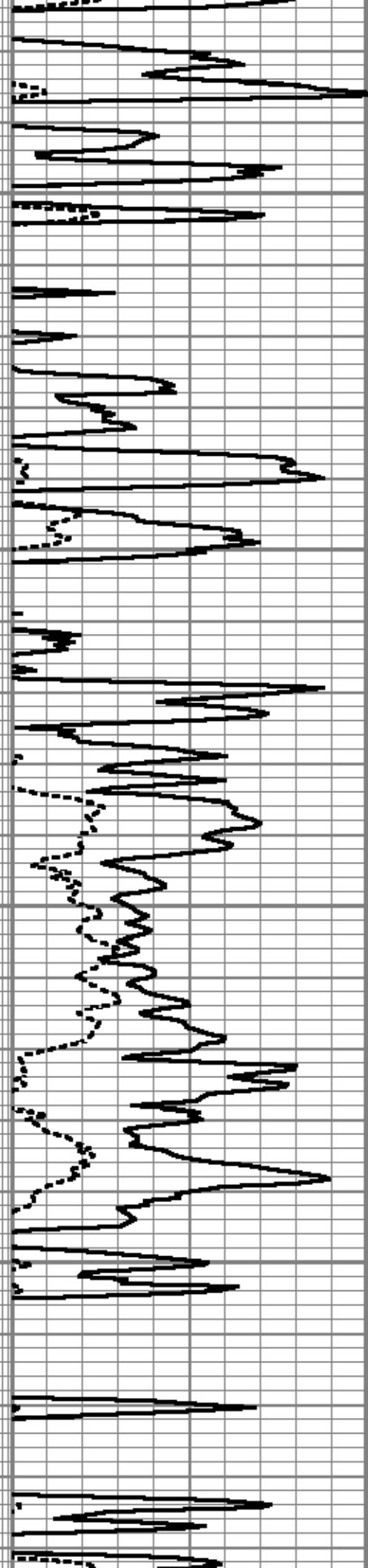
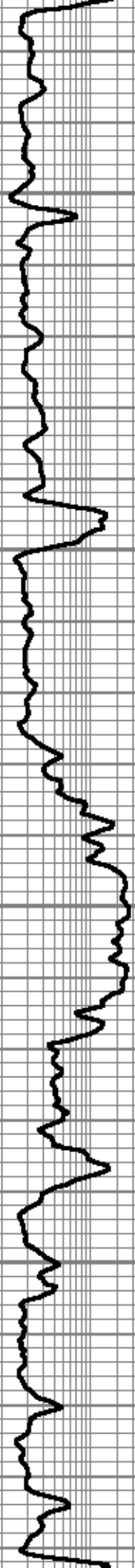
0.3 Emulated Neutron Porosity -0.1

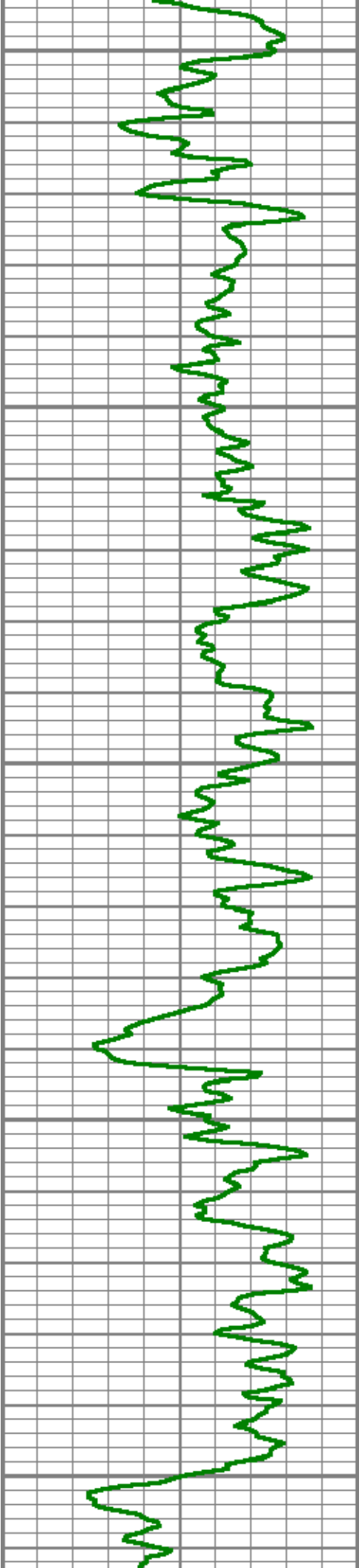




5100

5200

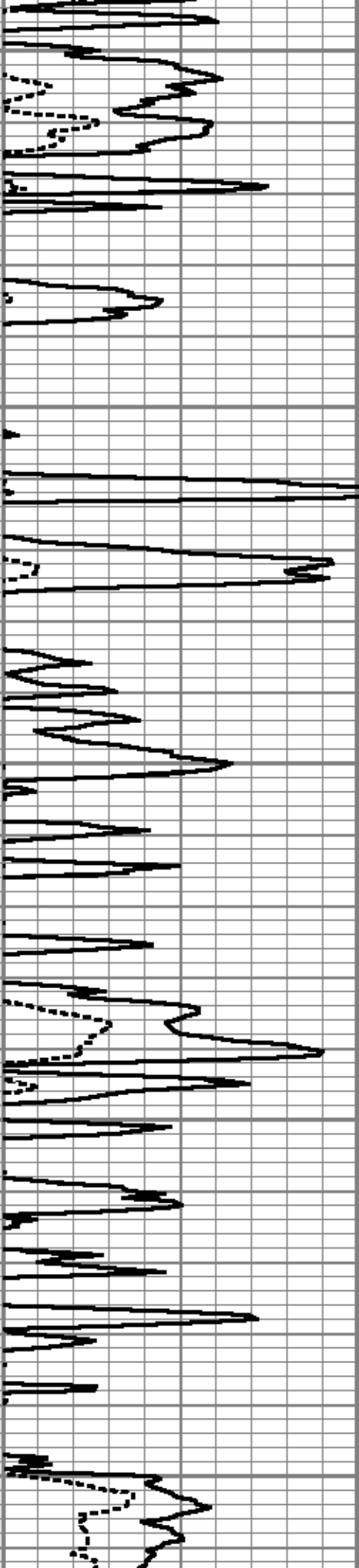
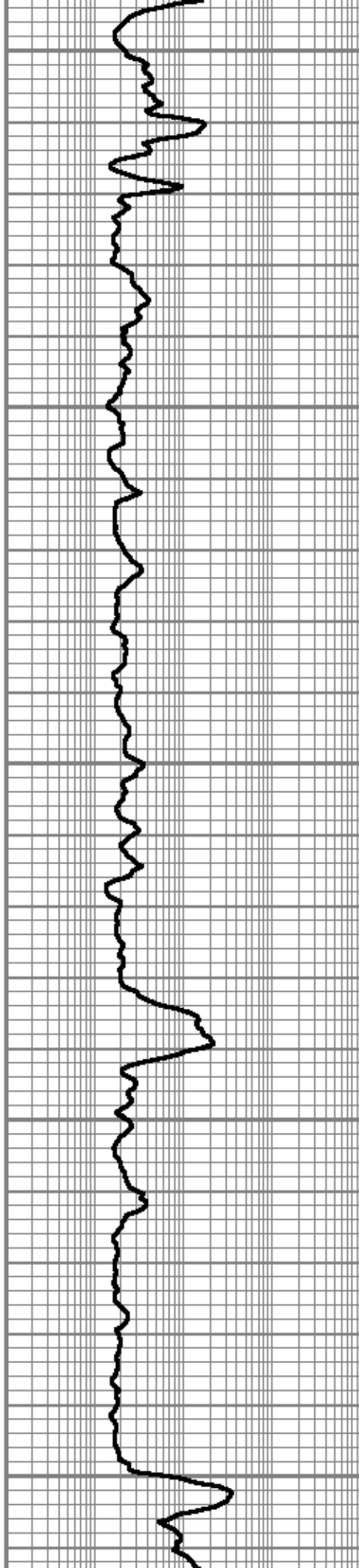


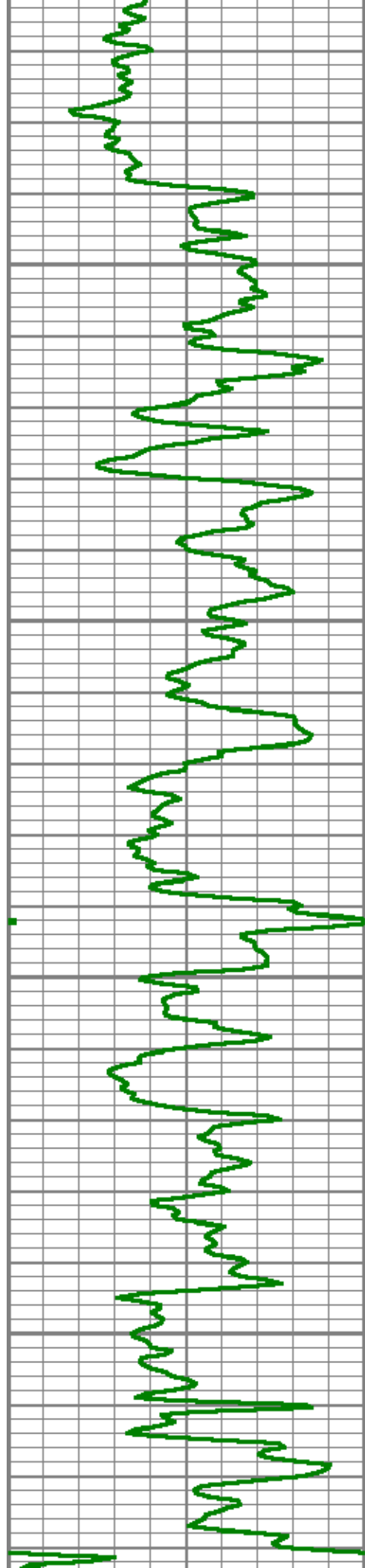


5300

5400

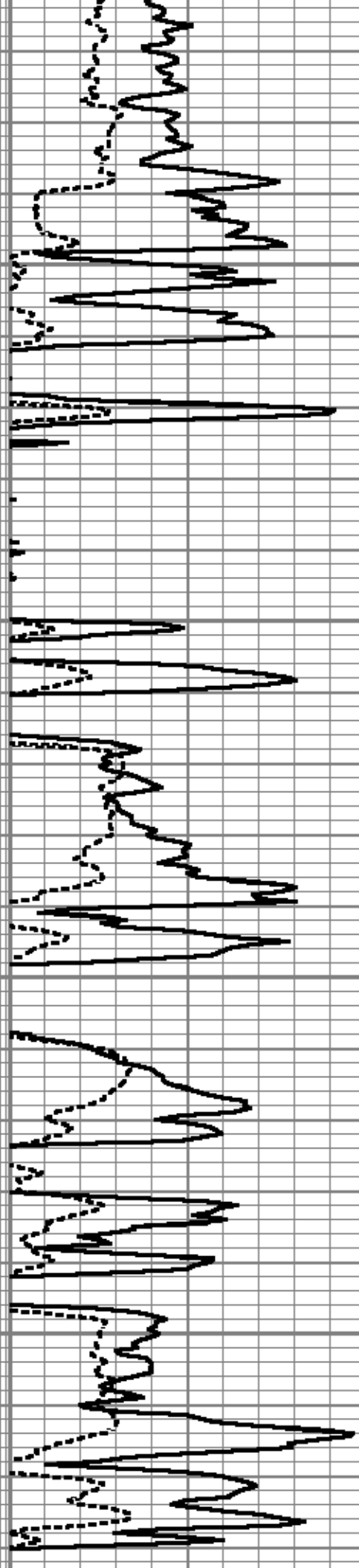
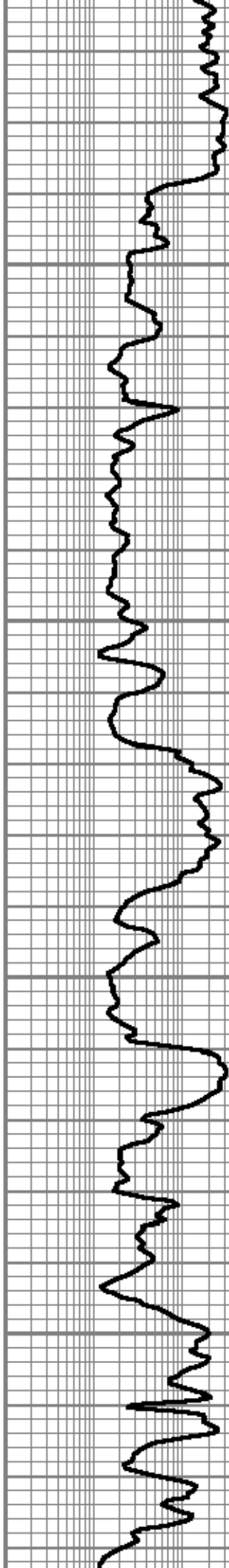
5500

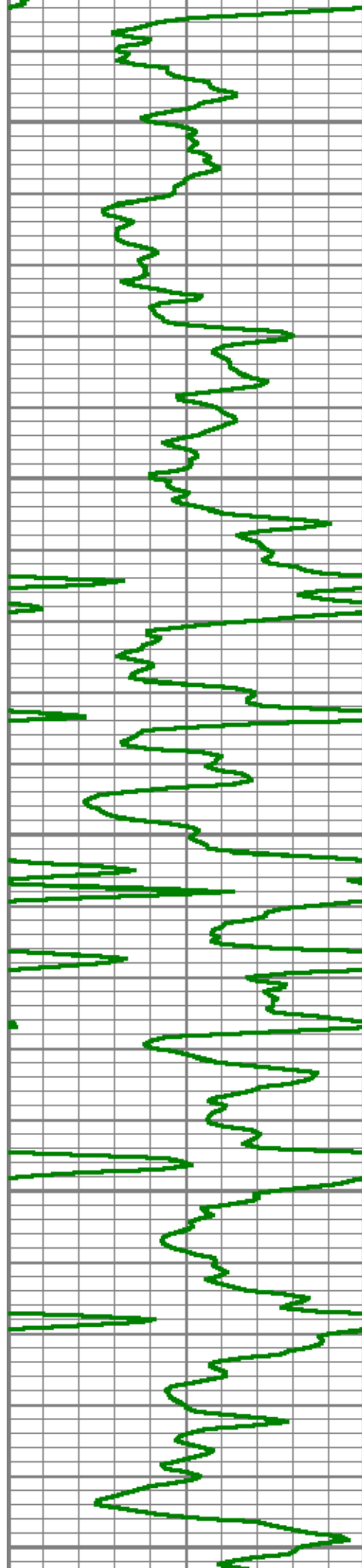




5600

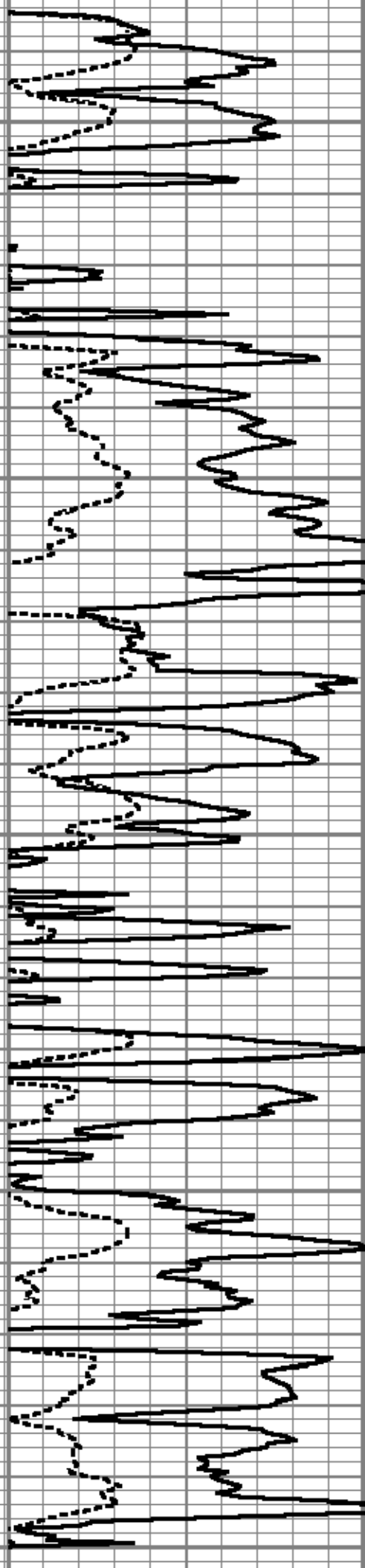
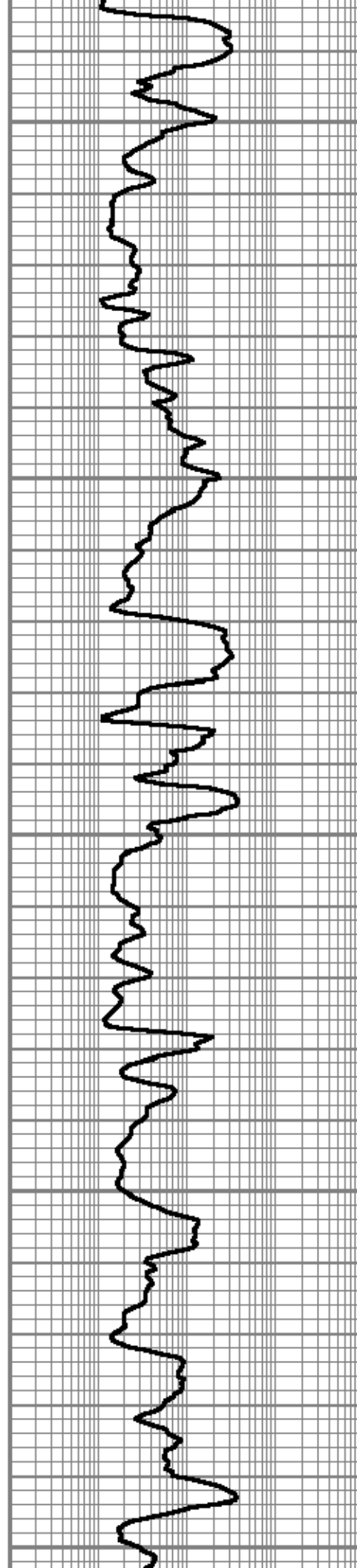
5700

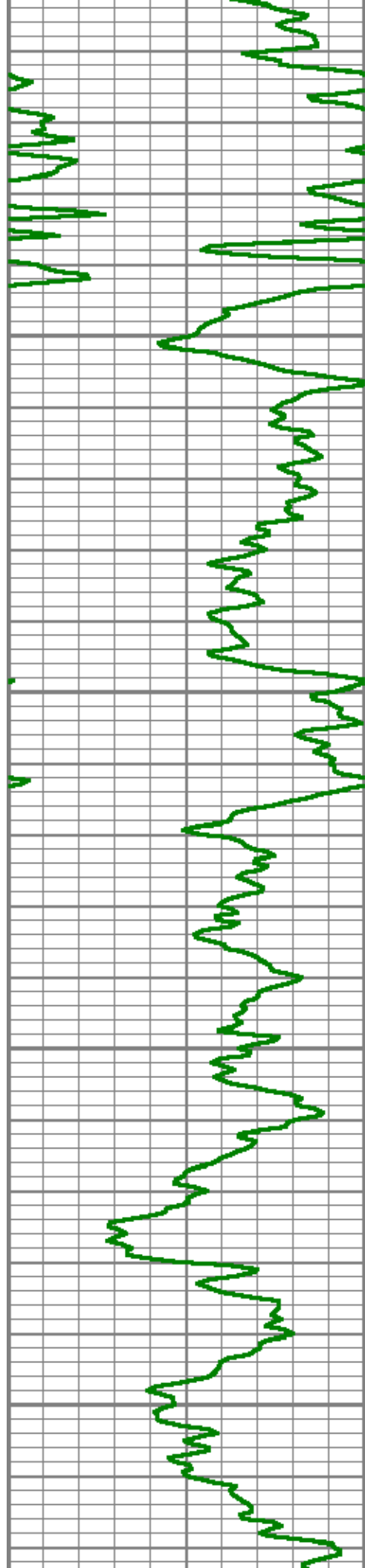




5800

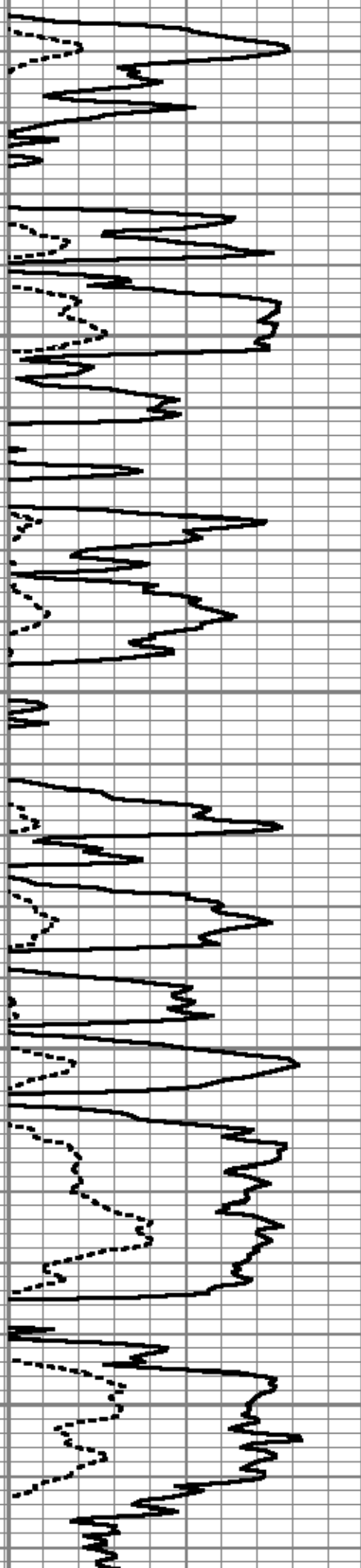
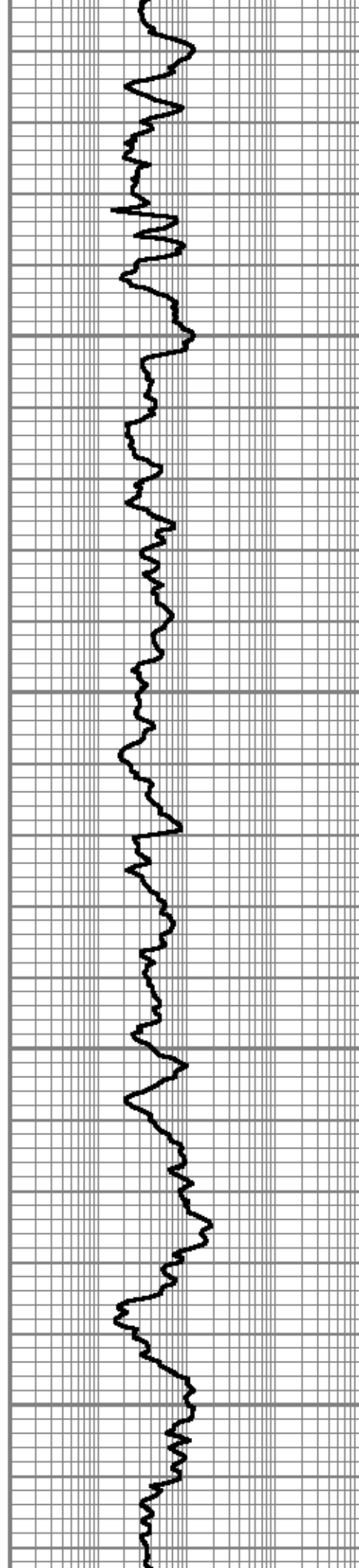
5900

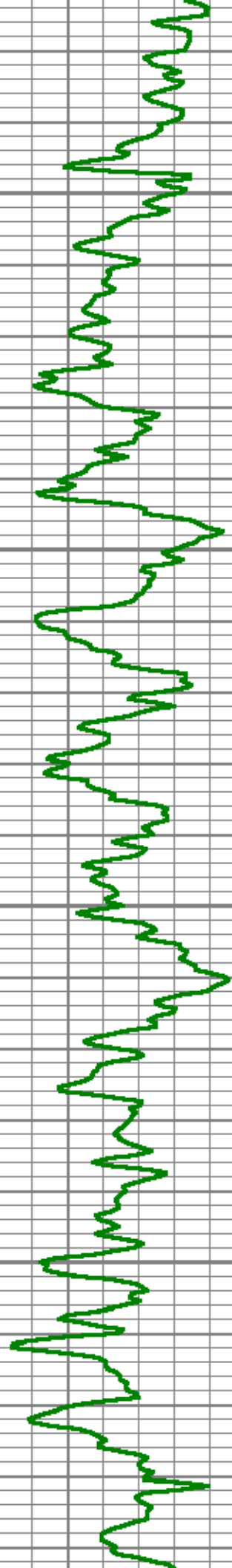




6000

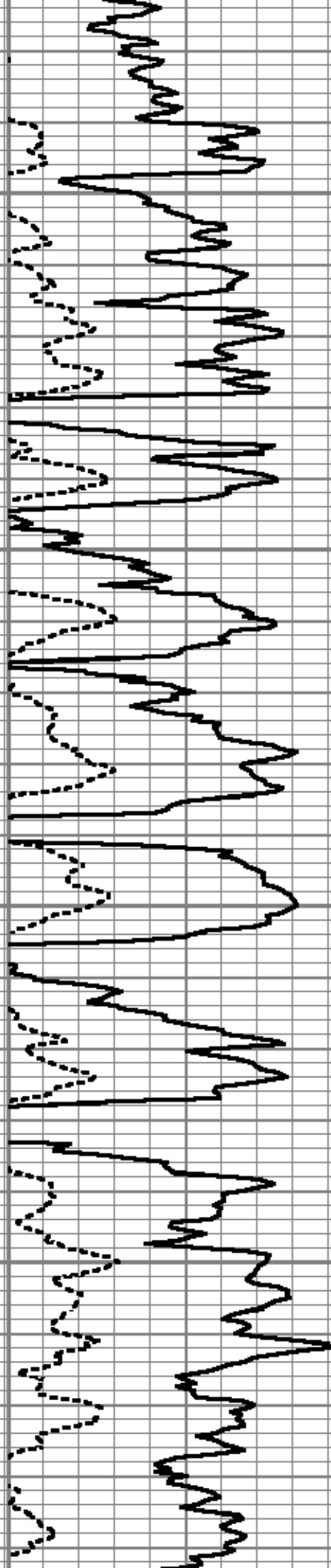
6100

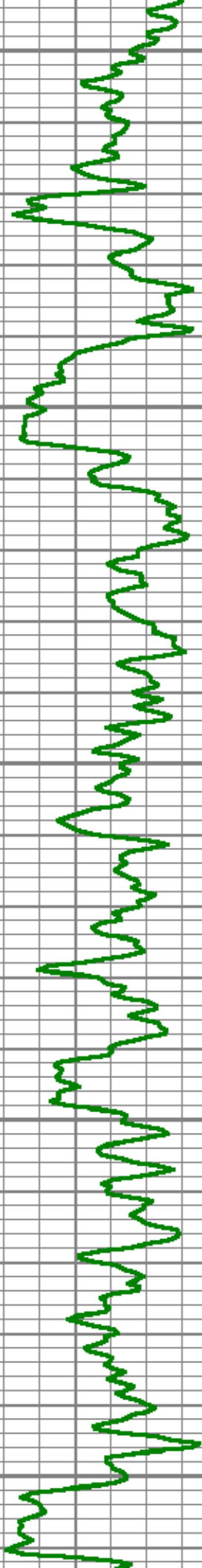




6200

6300

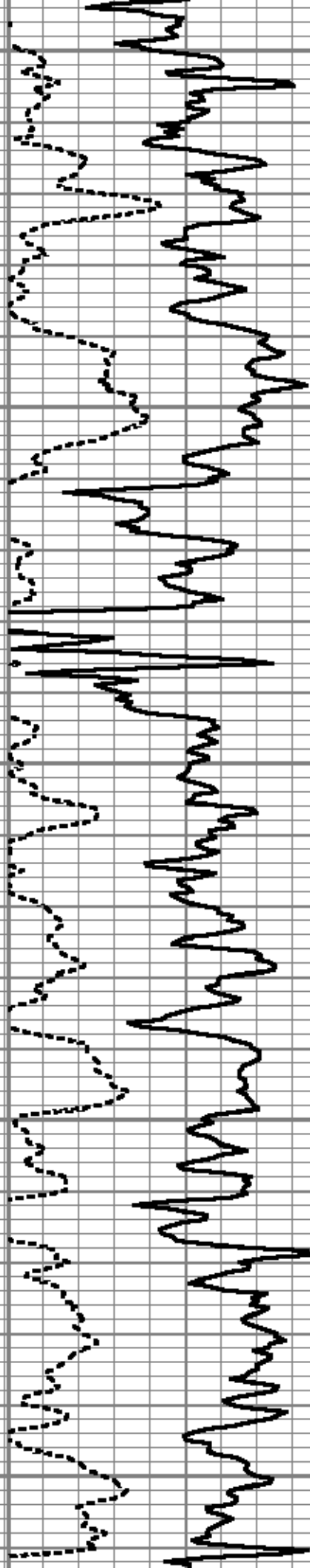
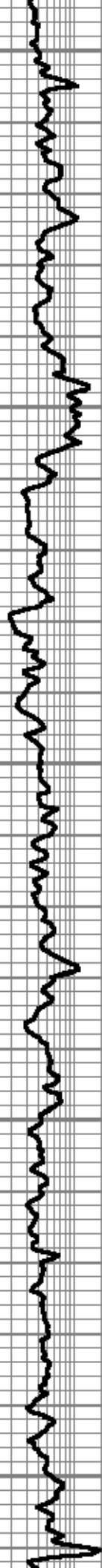


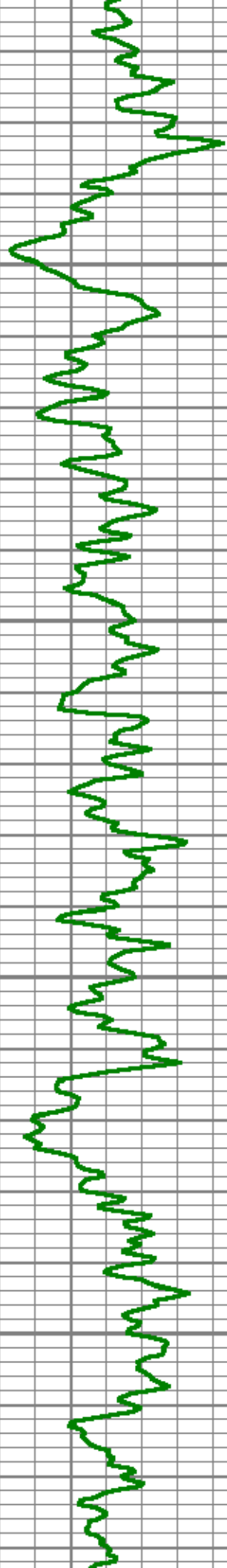


6400

6500

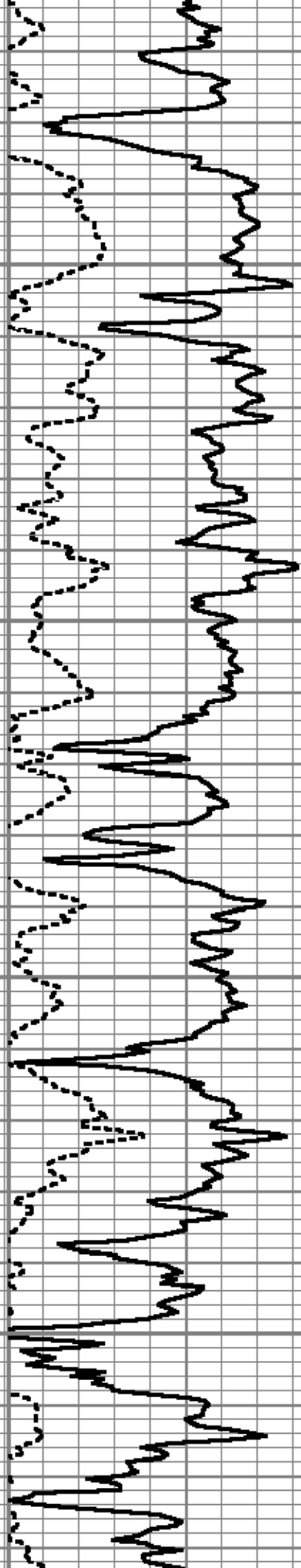
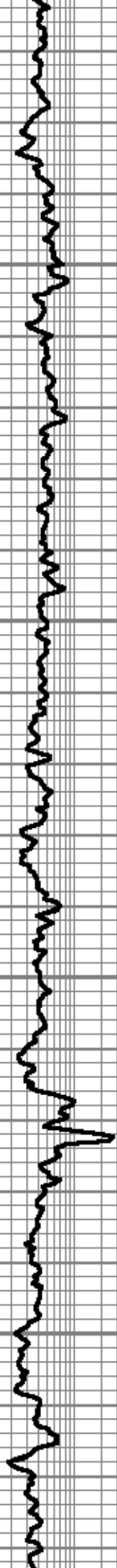
6600

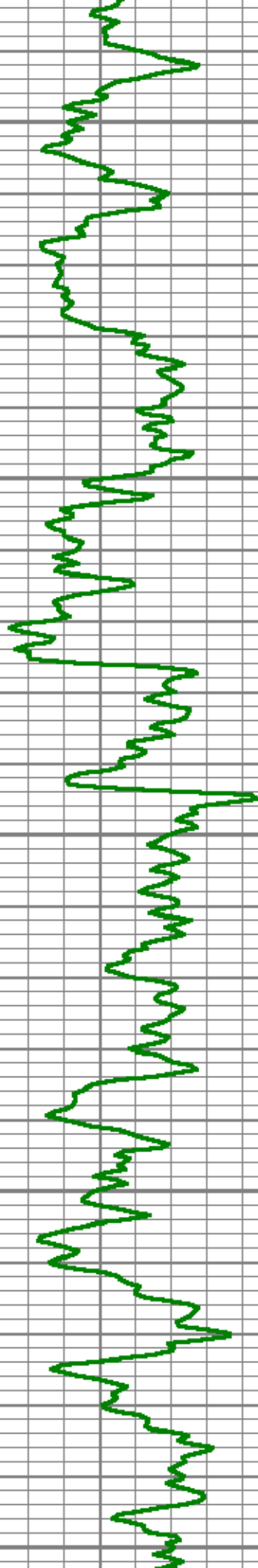




6700

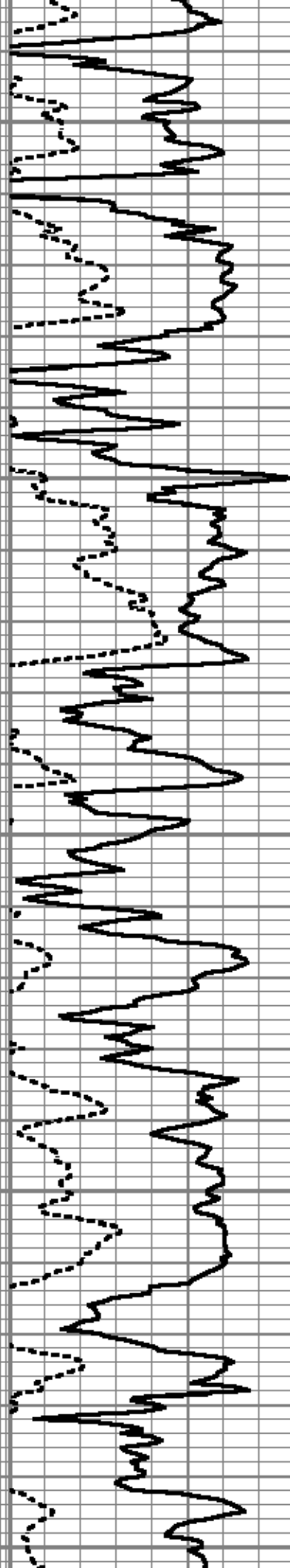
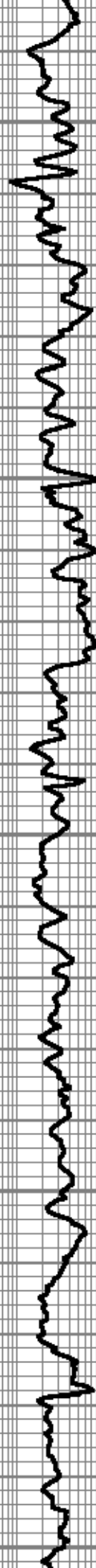
6800





6900

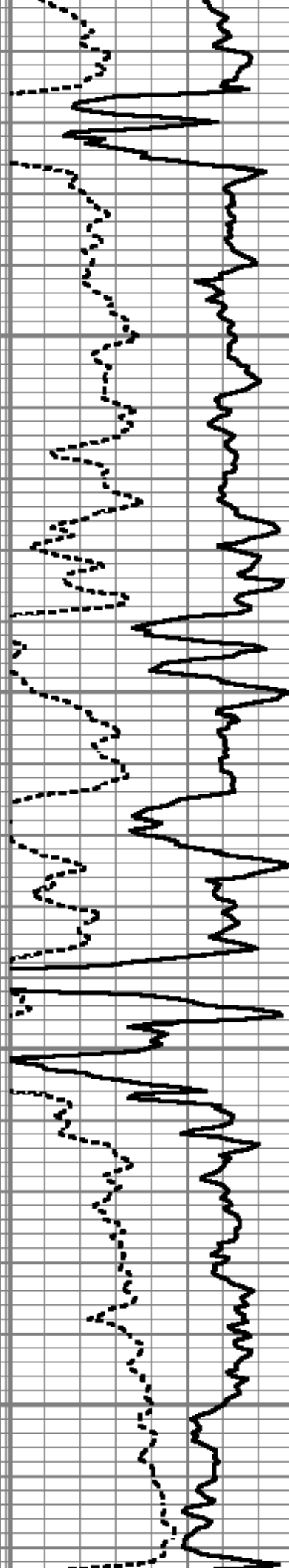
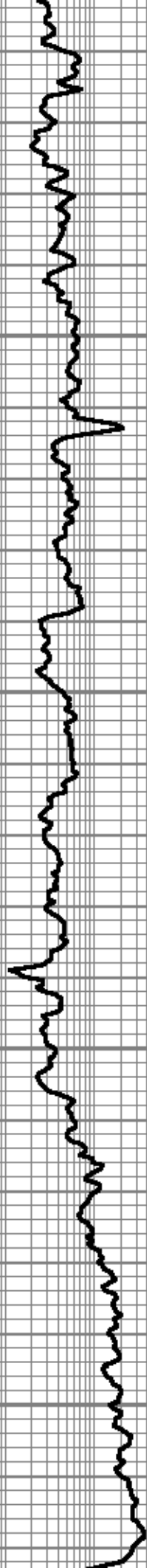
7000

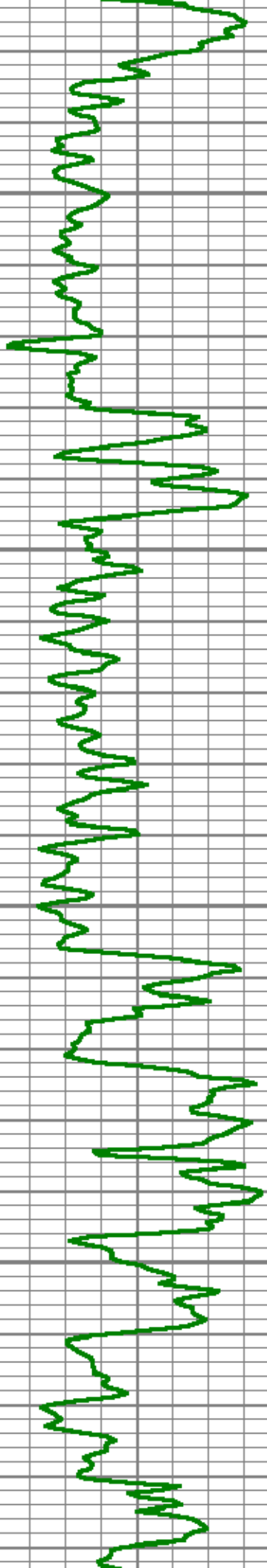




7100

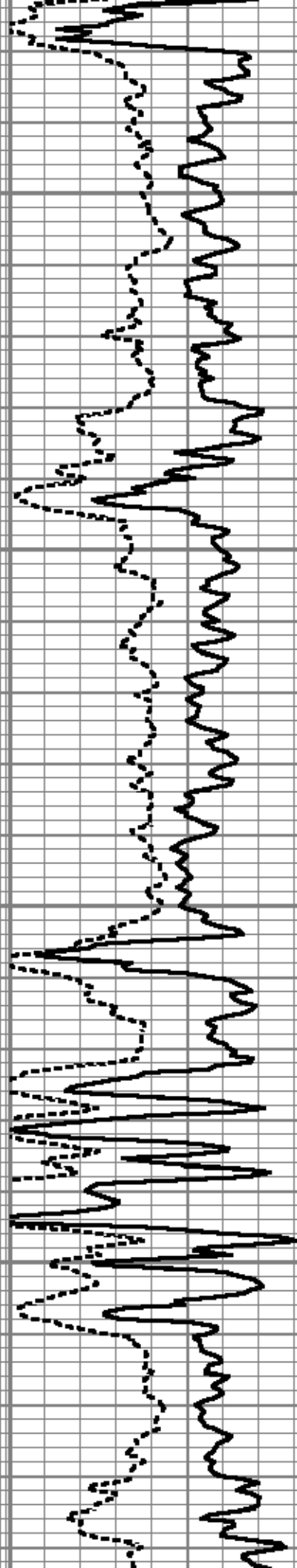
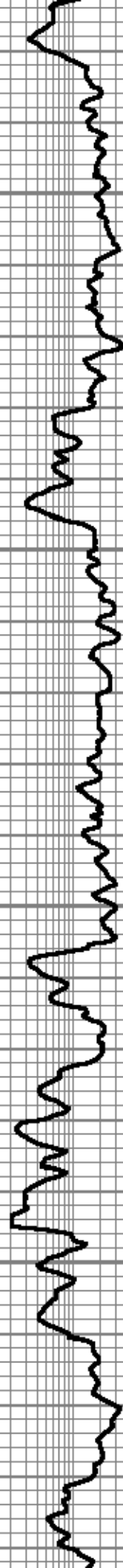
7200

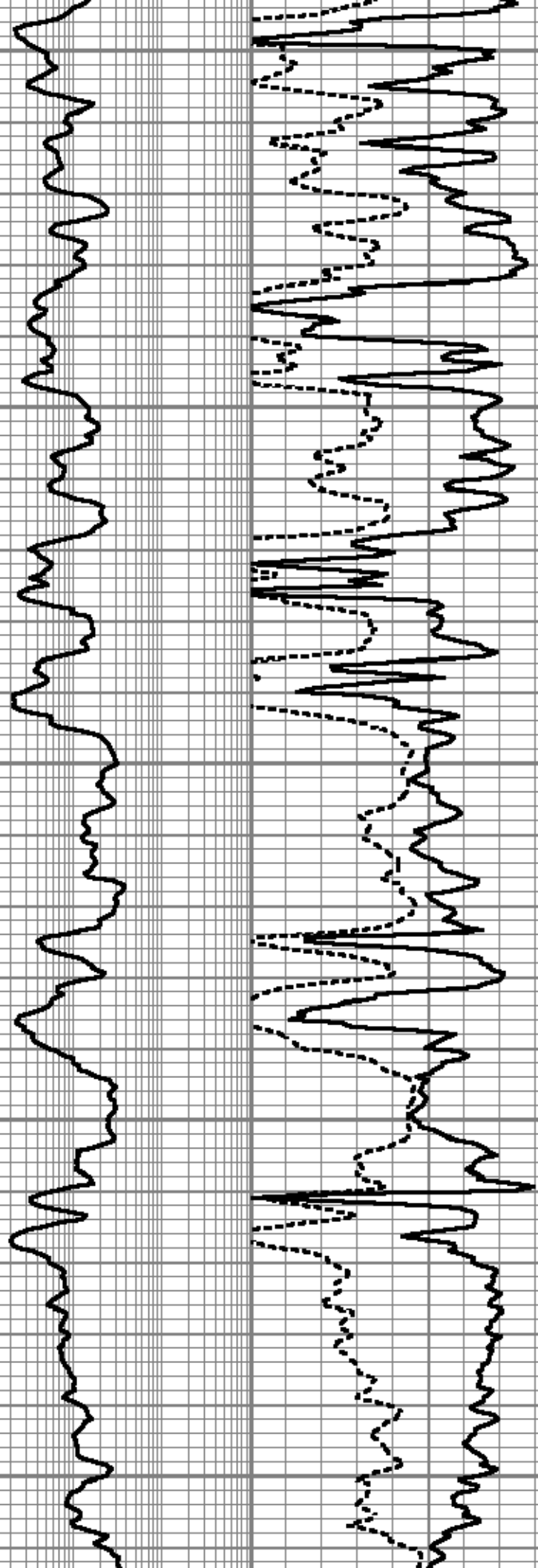
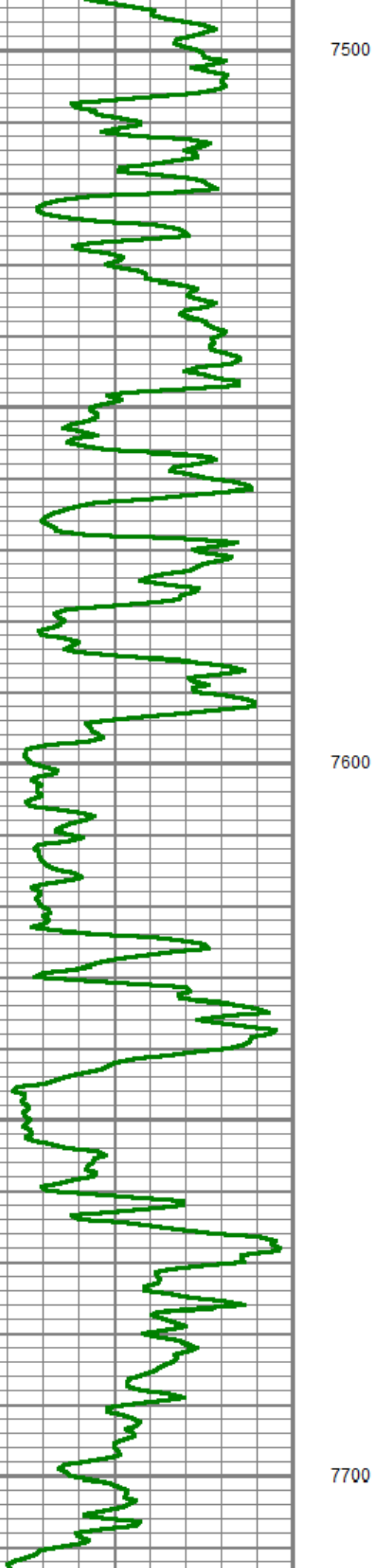


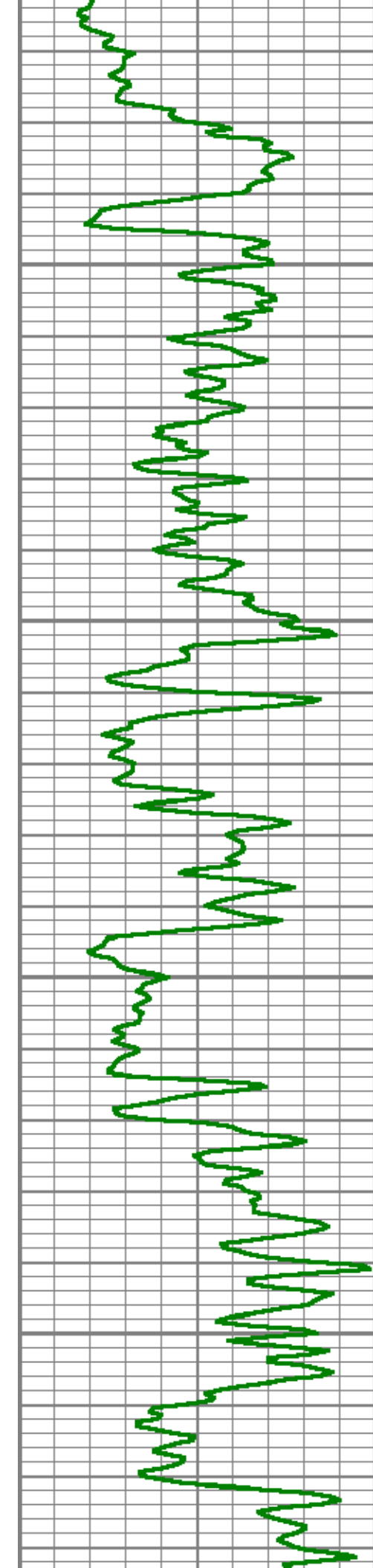


7300

7400

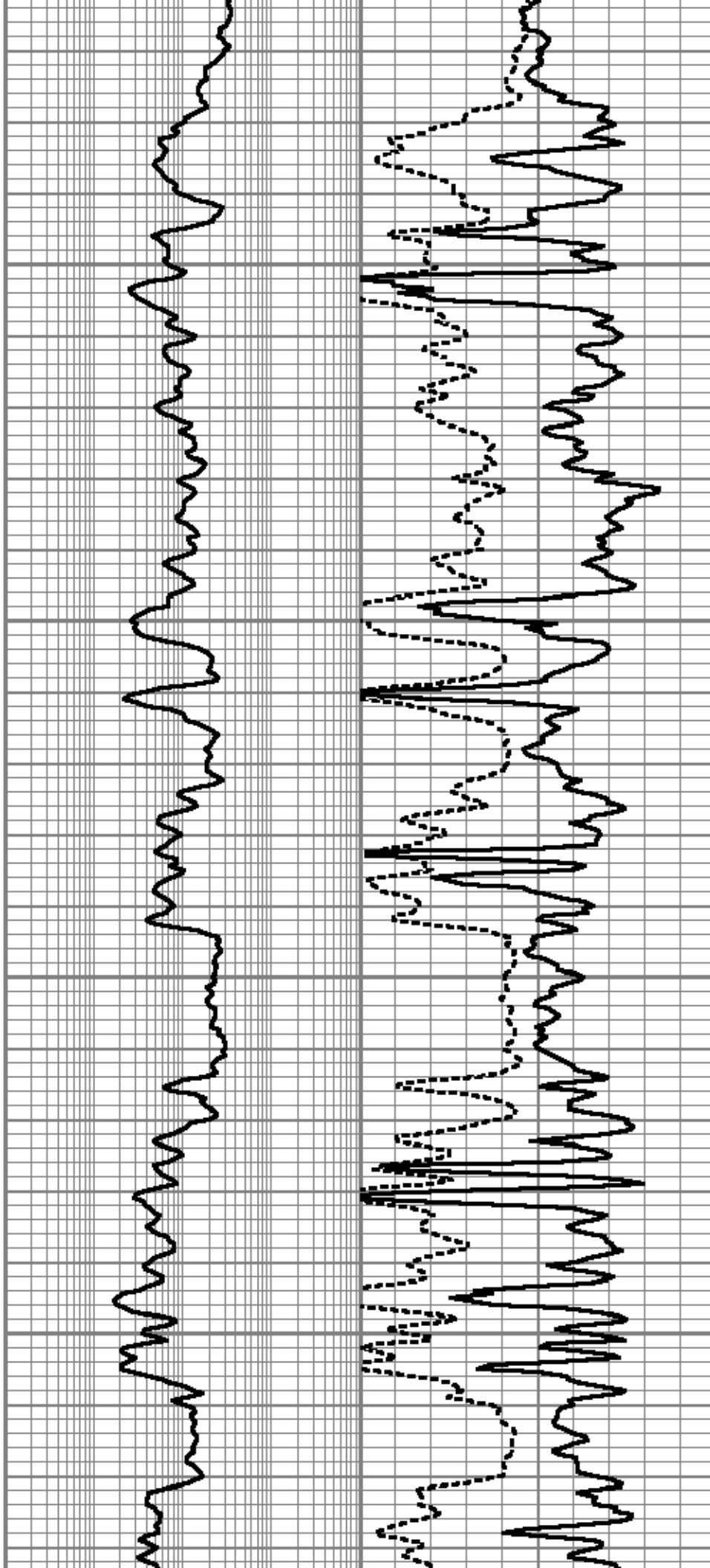


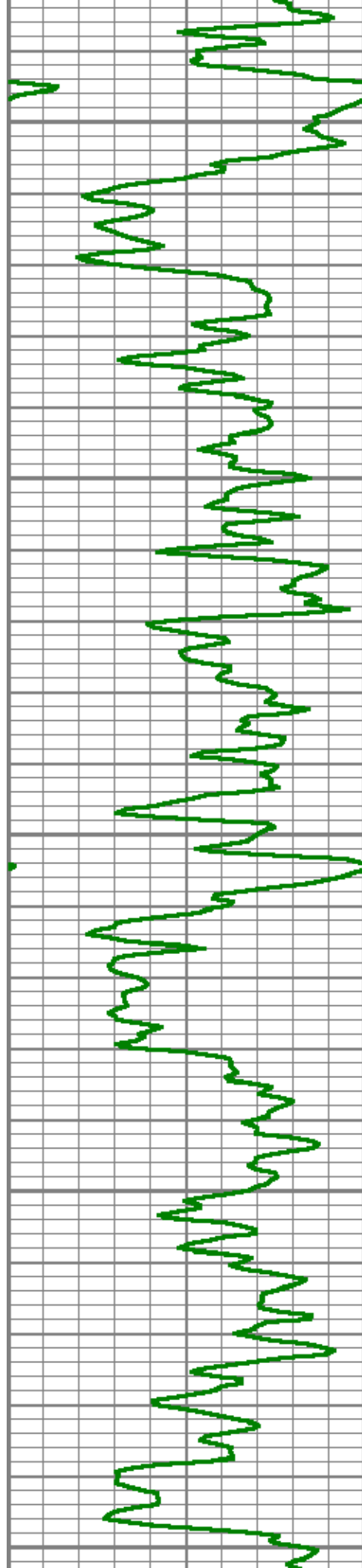




7800

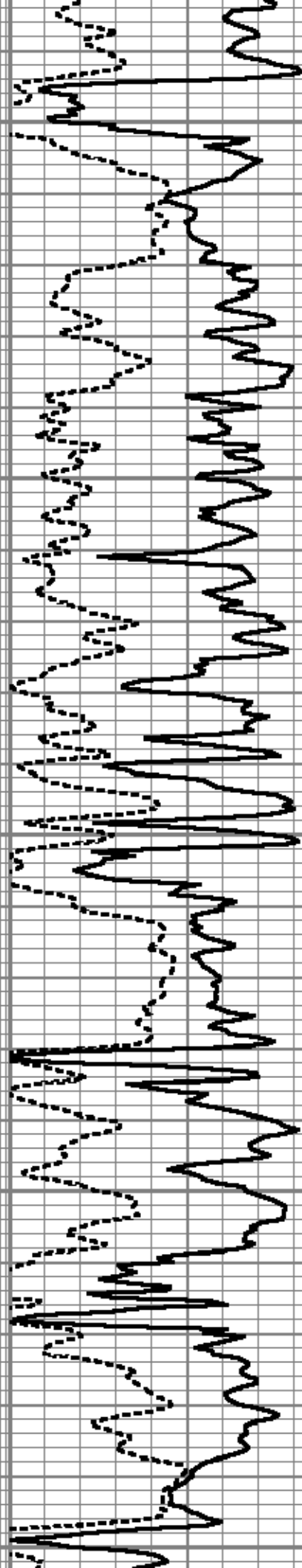
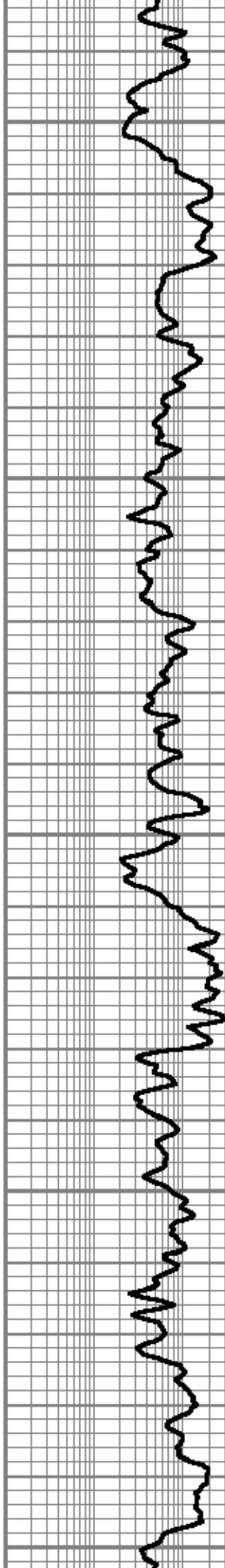
7900

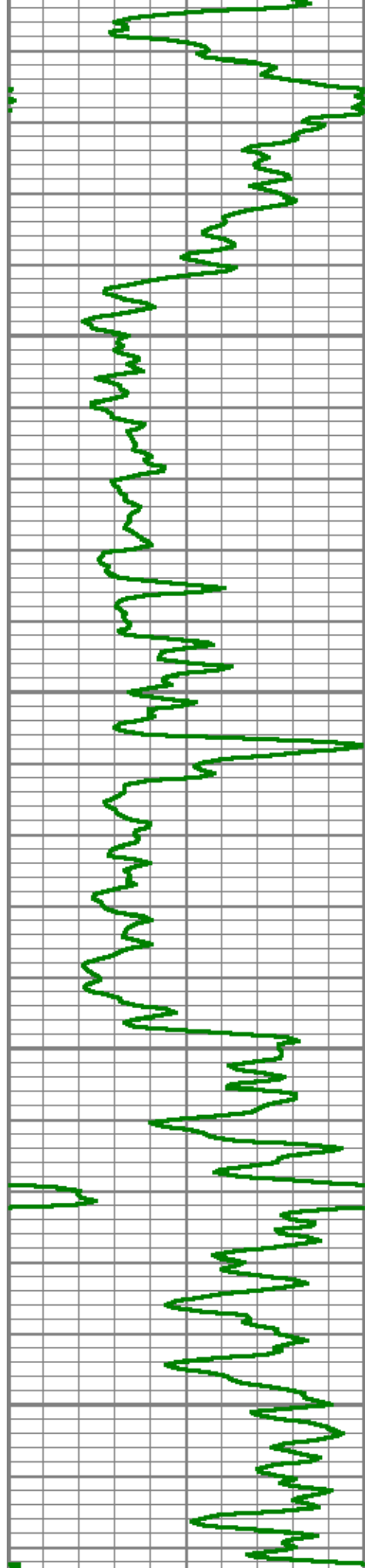




8000

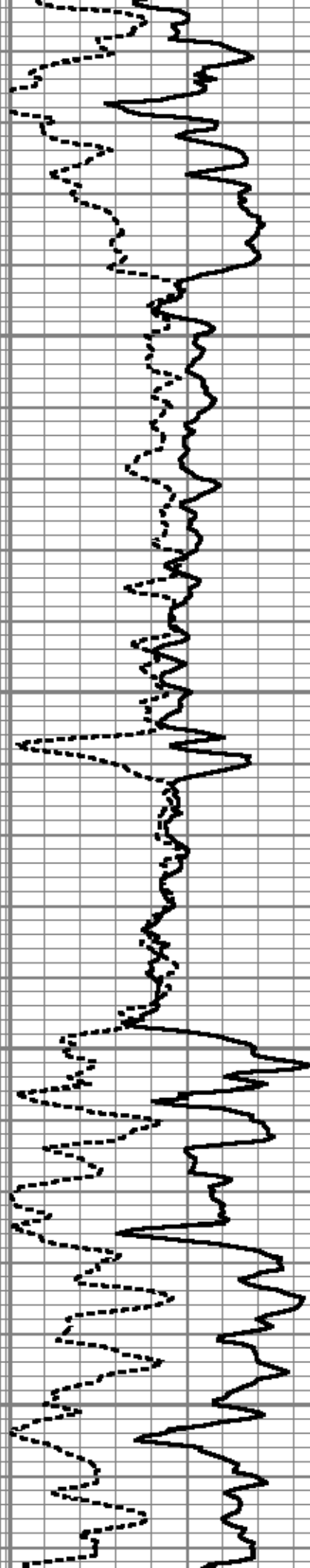
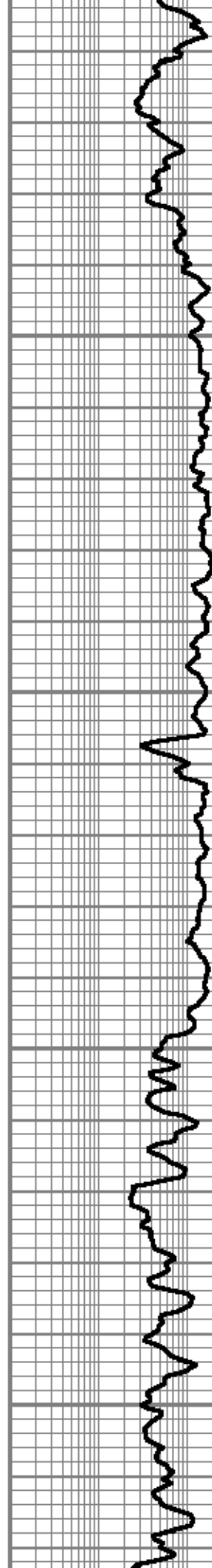
8100

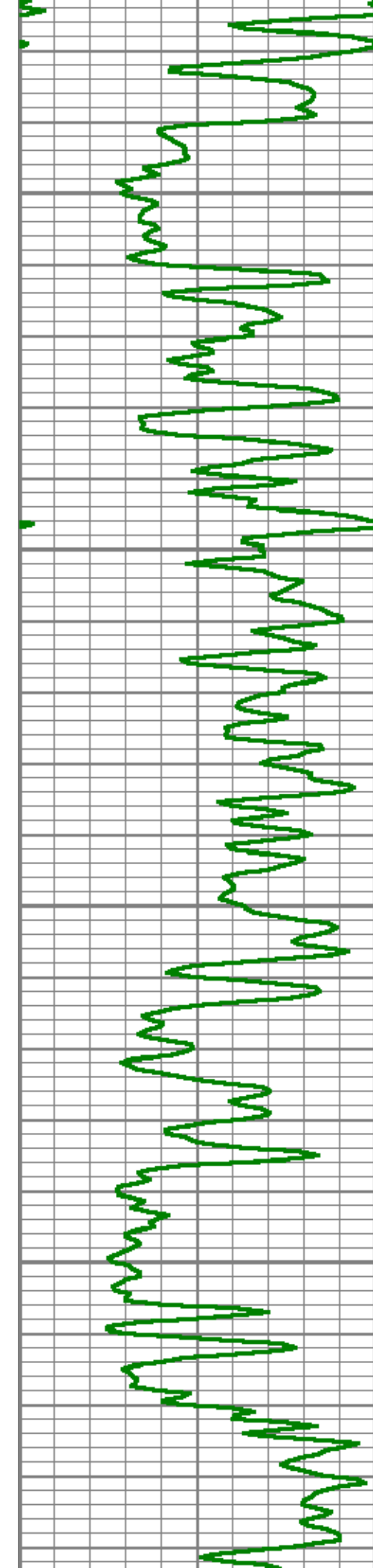




8200

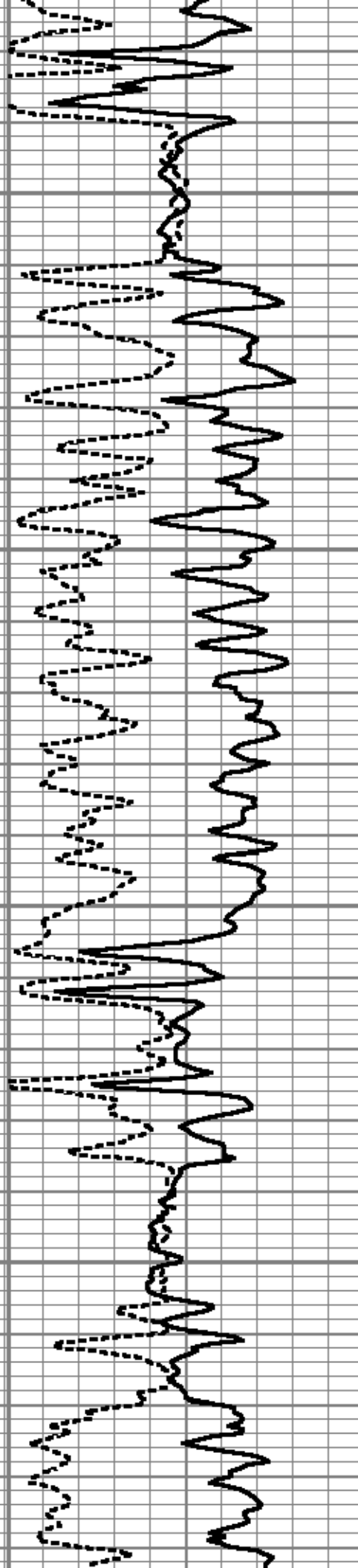
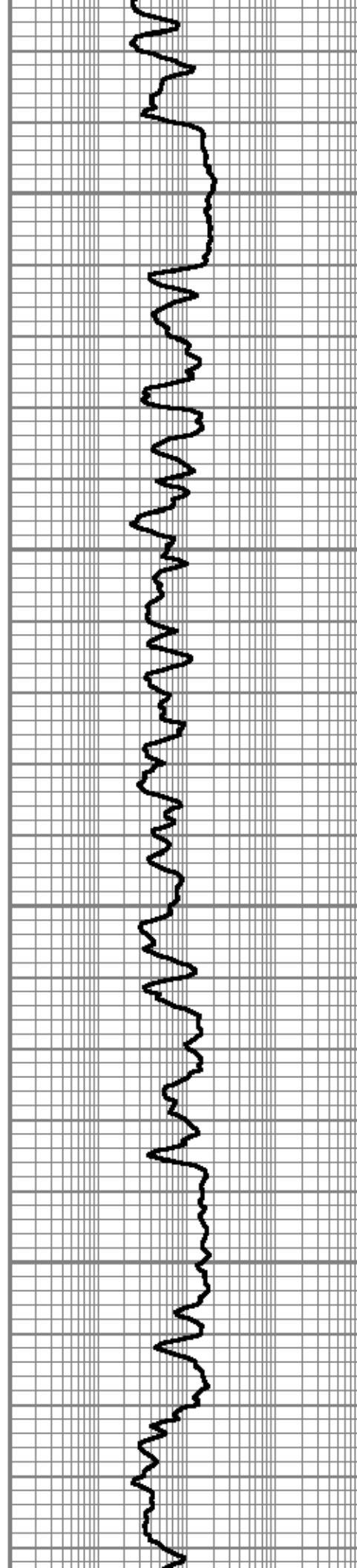
8300

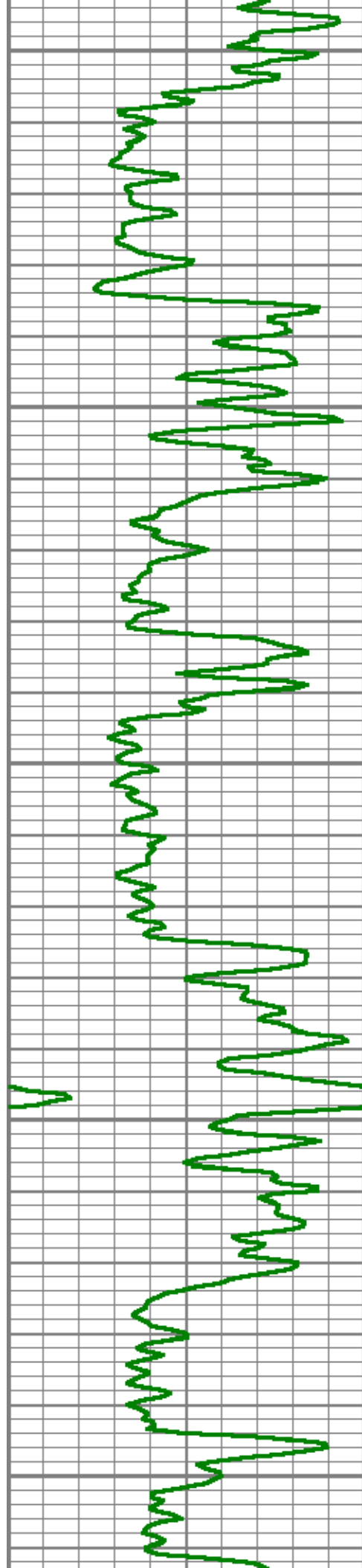




8400

8500

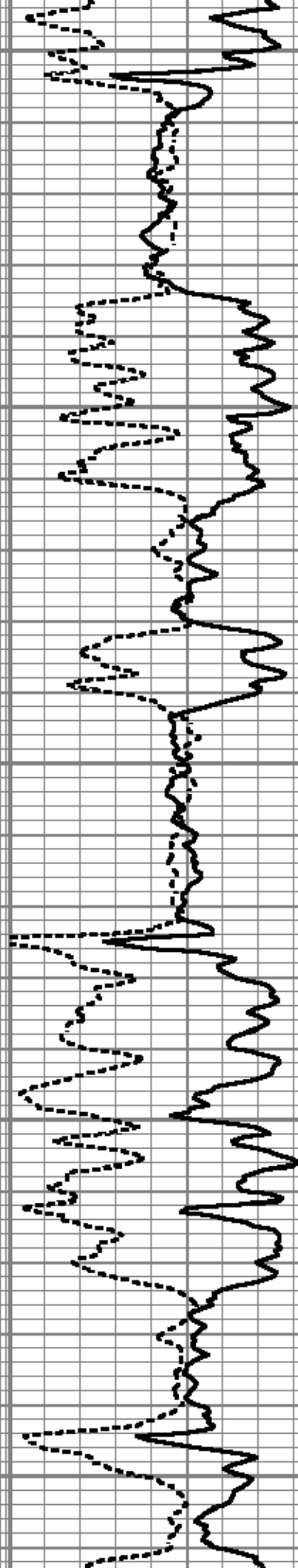
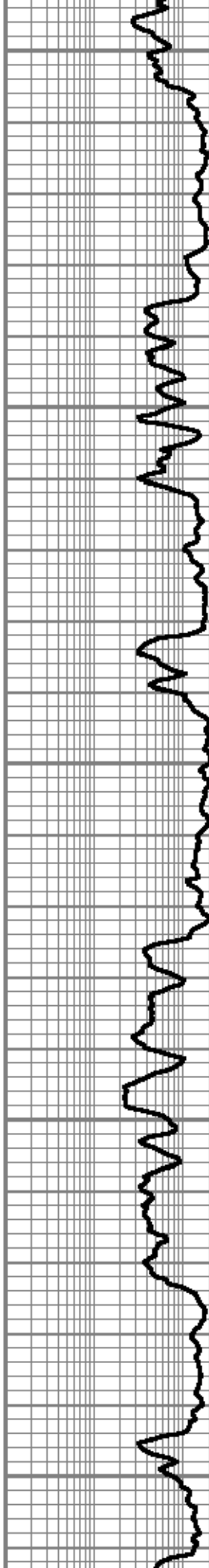


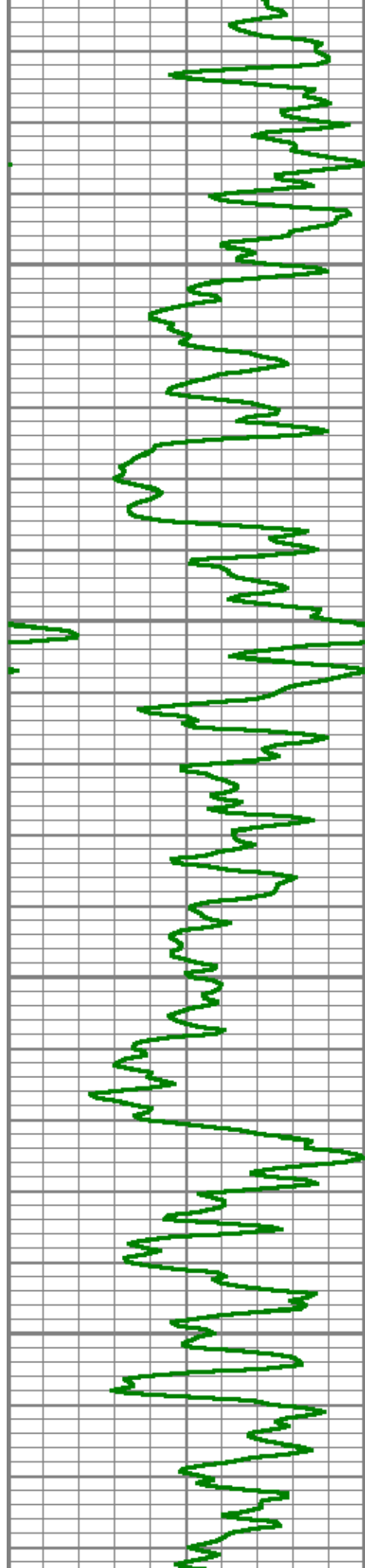


8600

8700

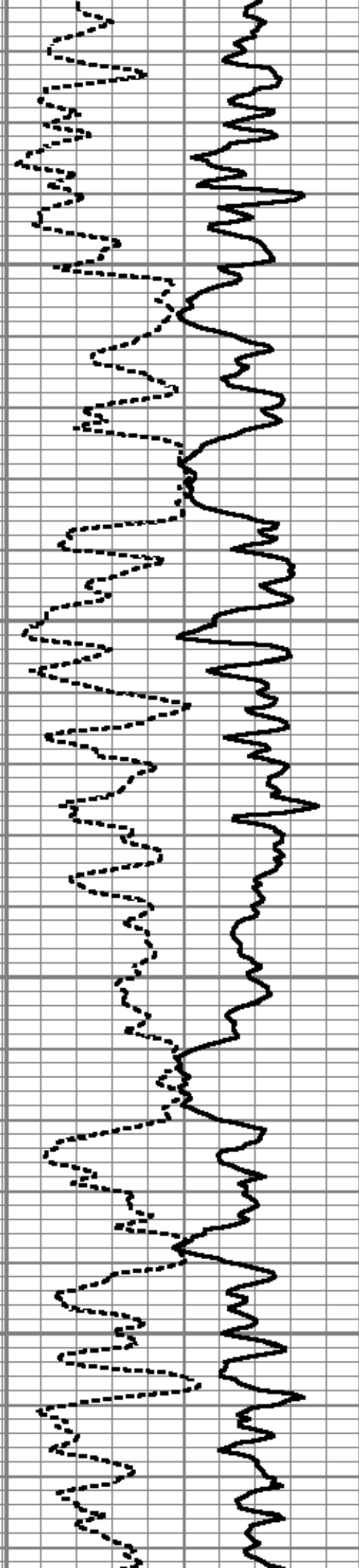
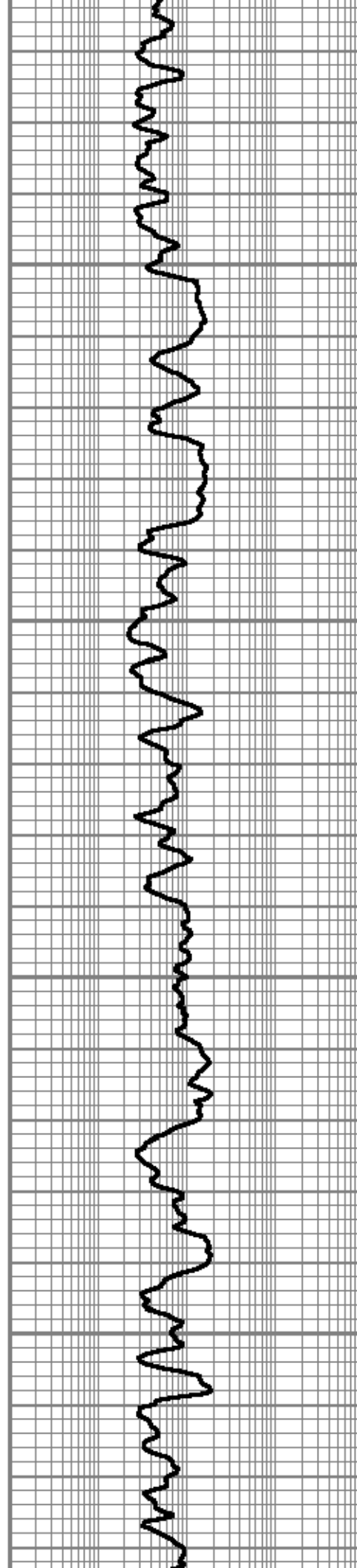
8800

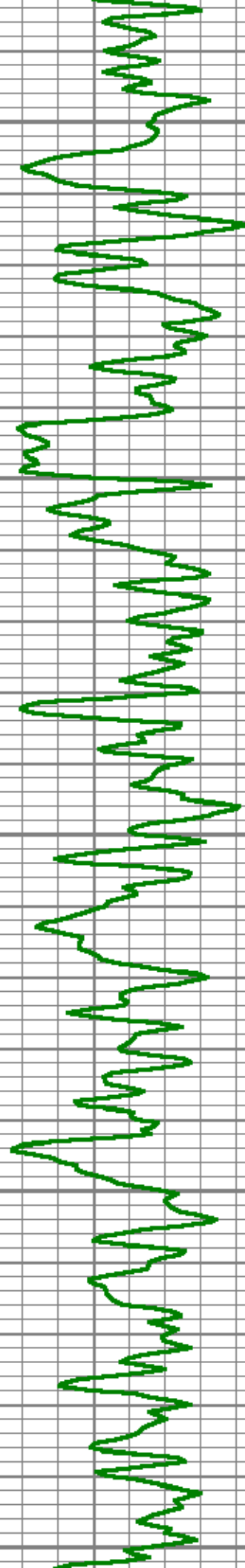




8900

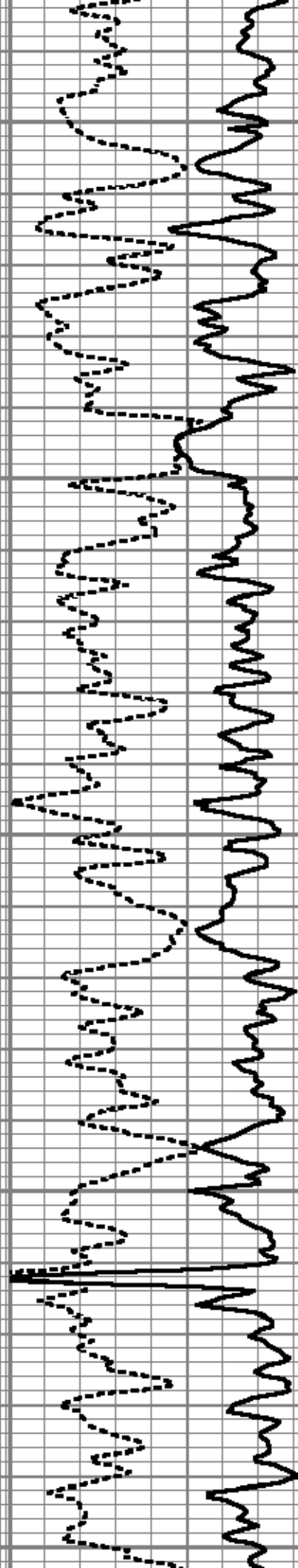
9000

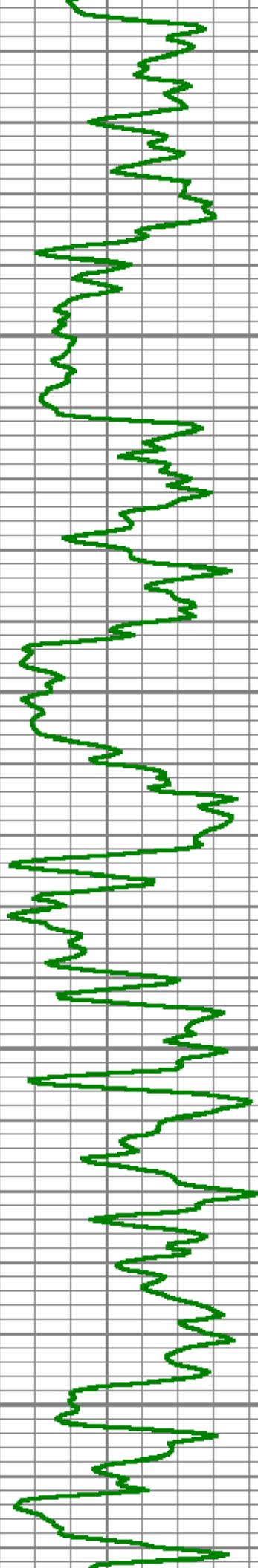




9100

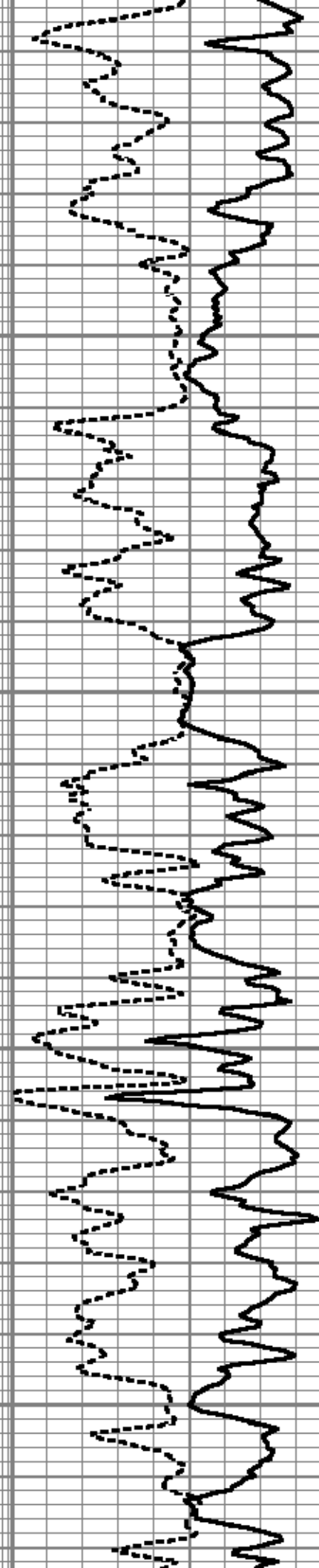
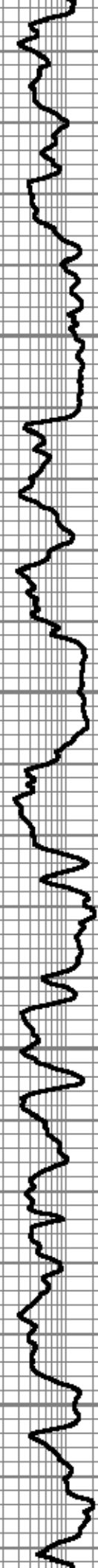
9200

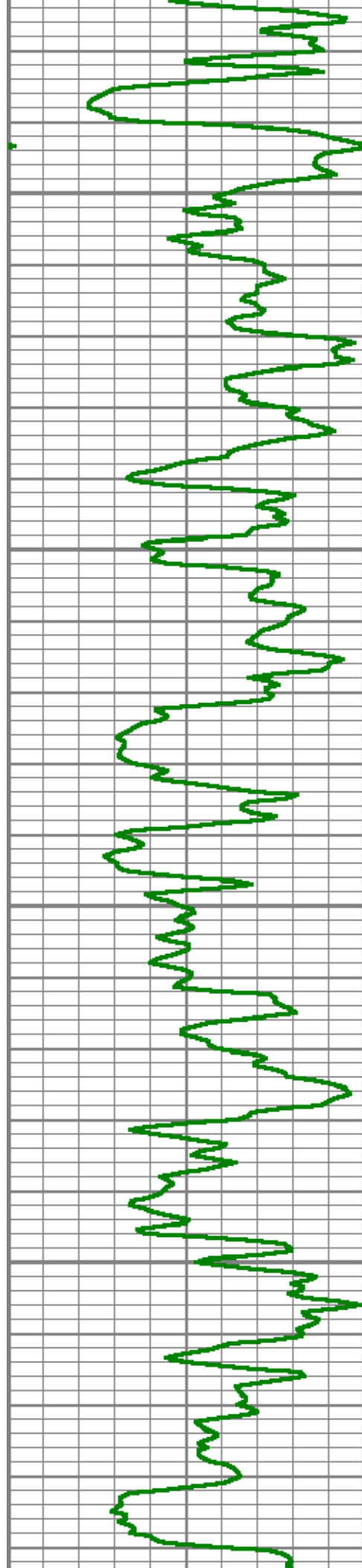




9300

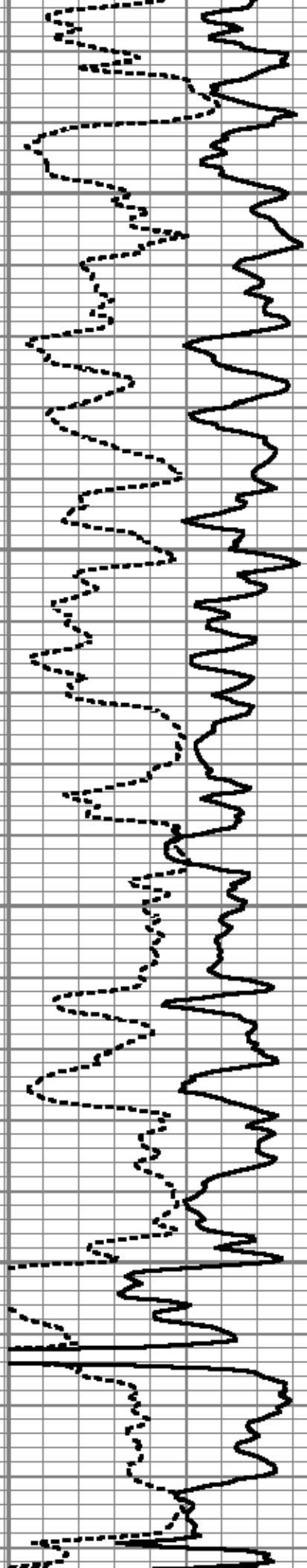
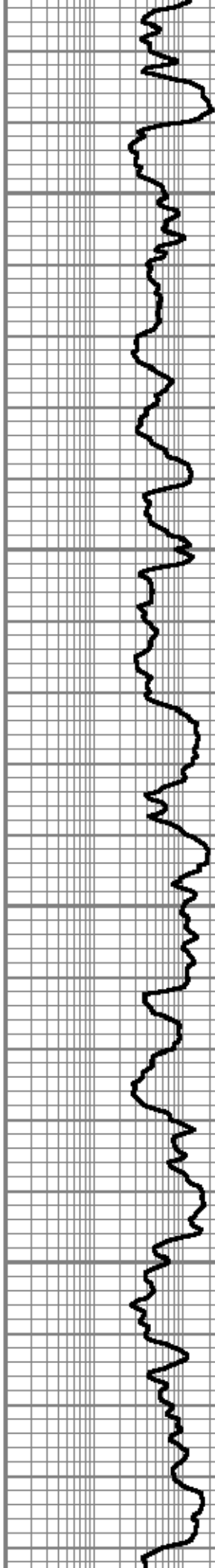
9400

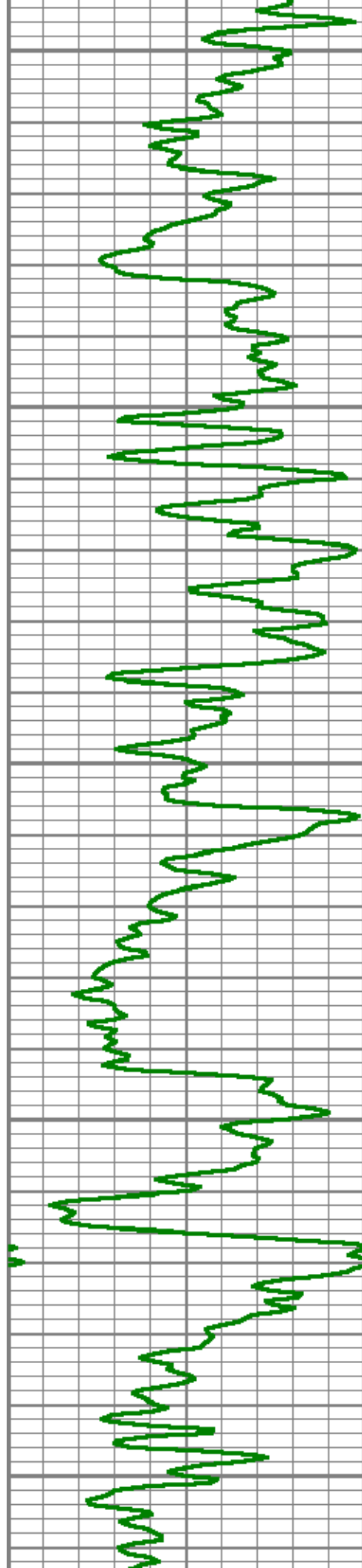




9500

9600

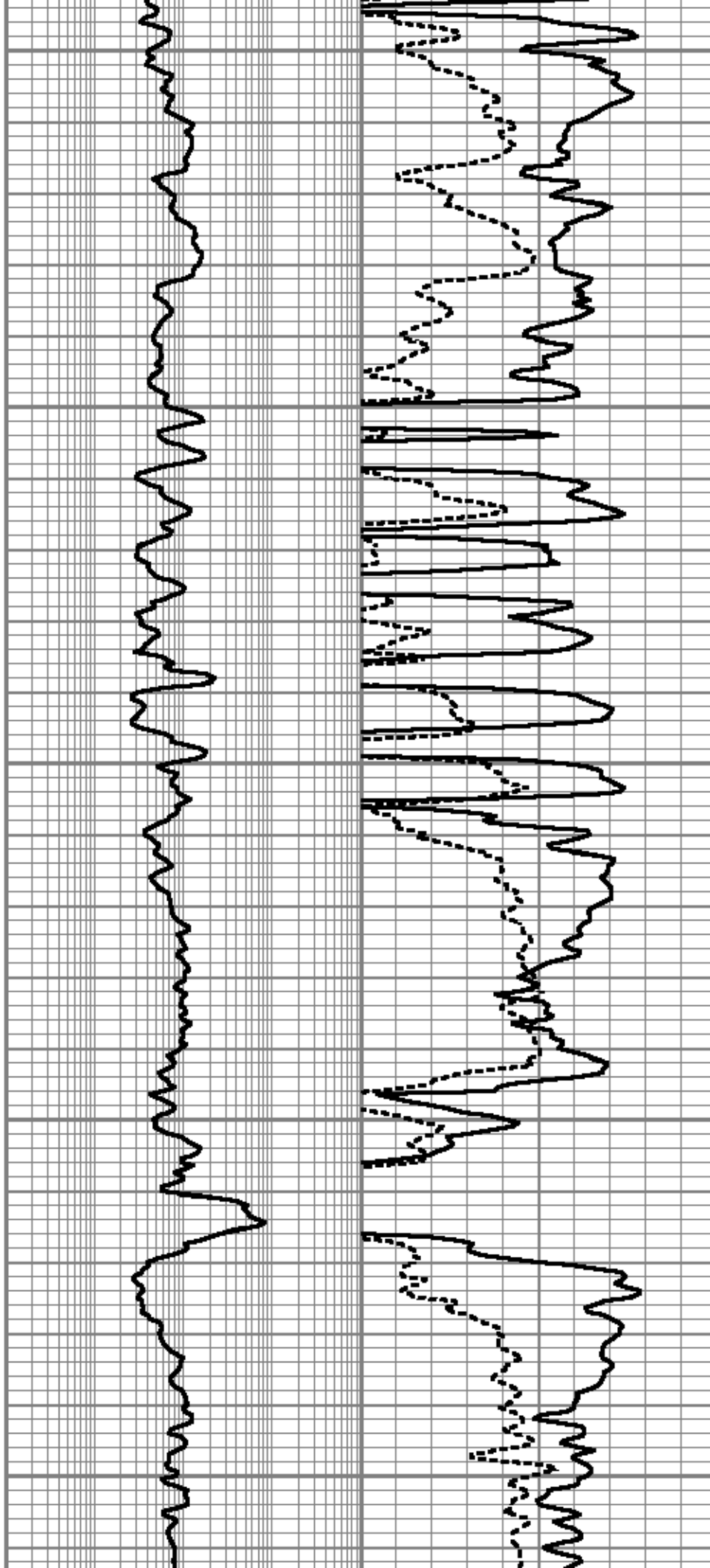


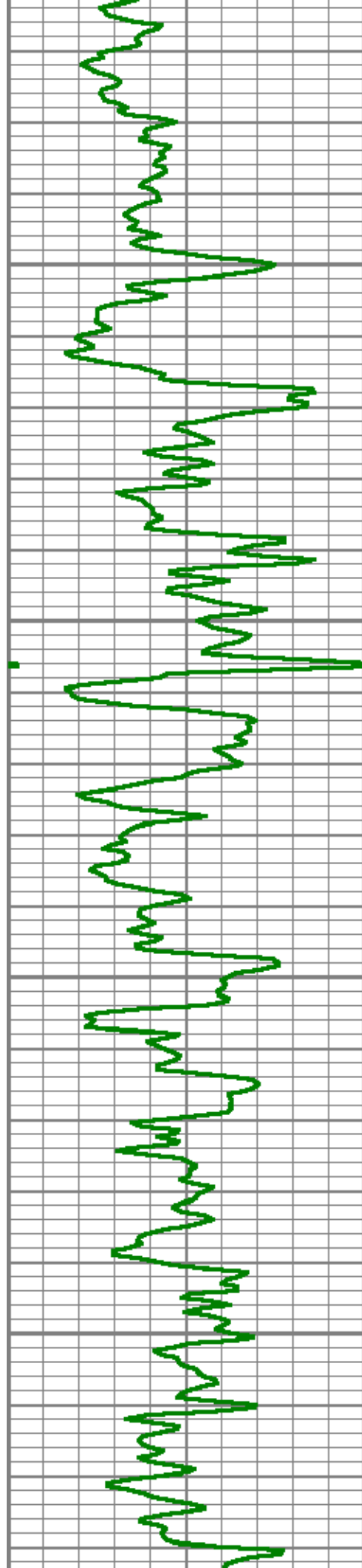


9700

9800

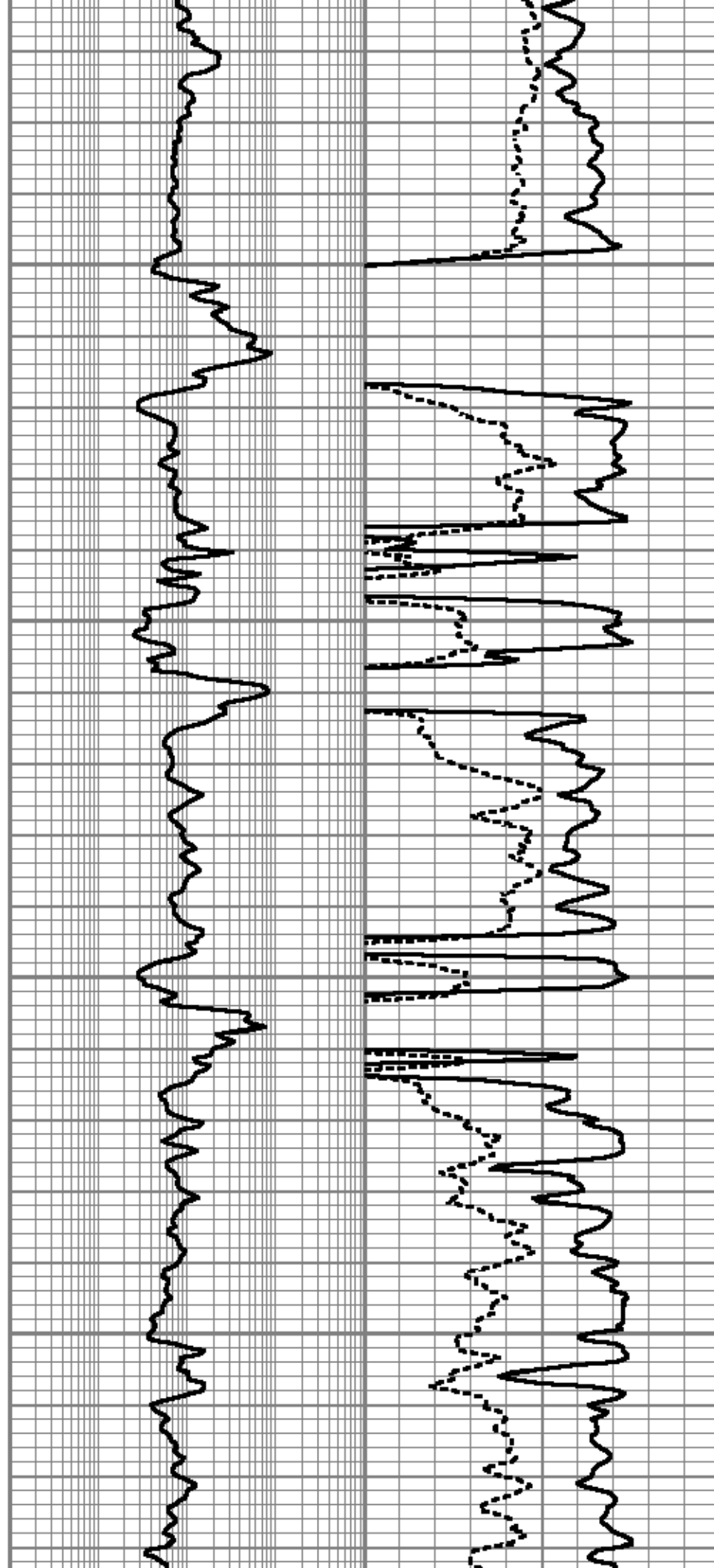
9900

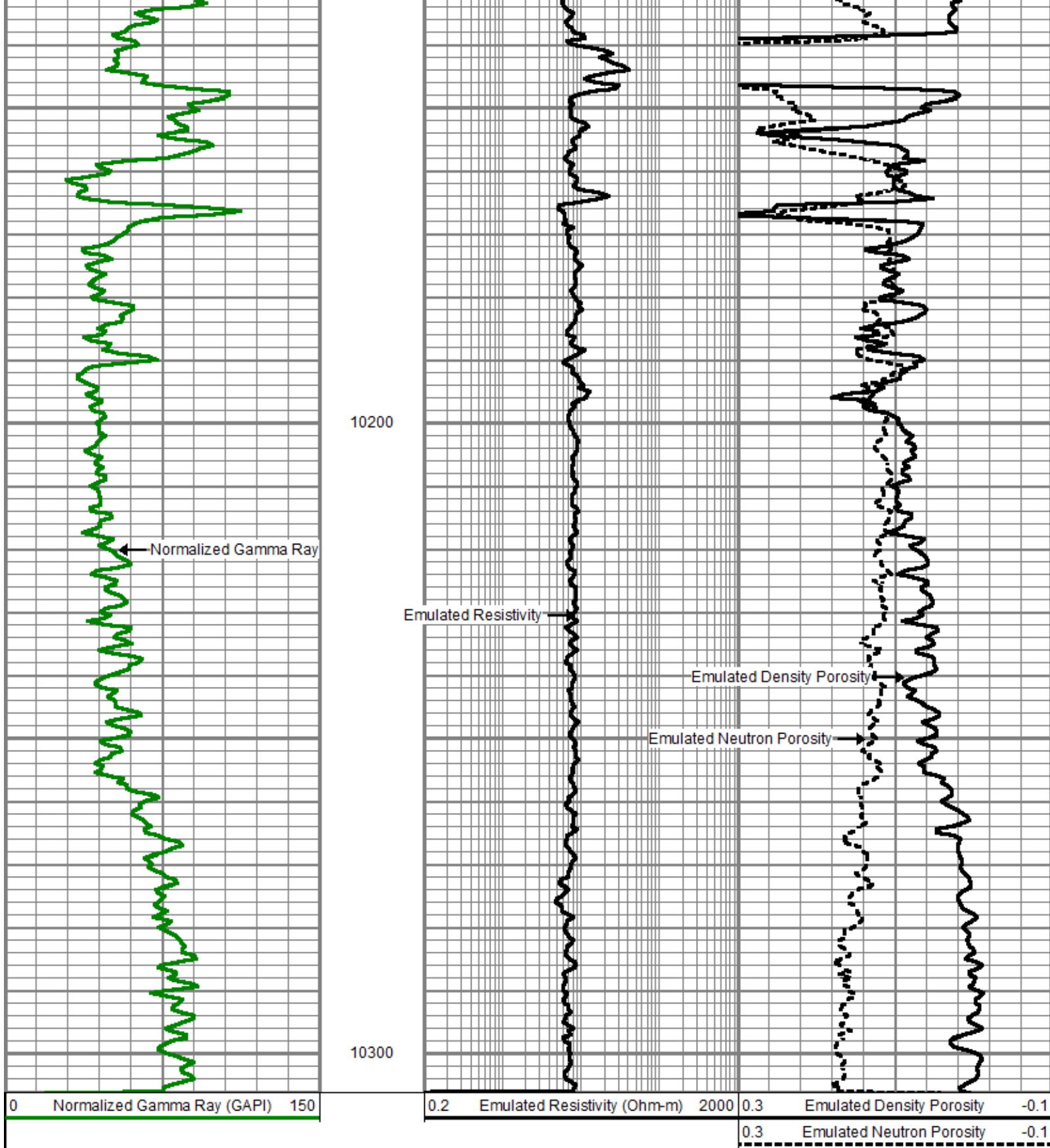




10000

10100





Company	Laramie Energy LLC
Well	CC Federal 0697-03-01W
Field	Grand Valley
County	Garfield
State	Colorado