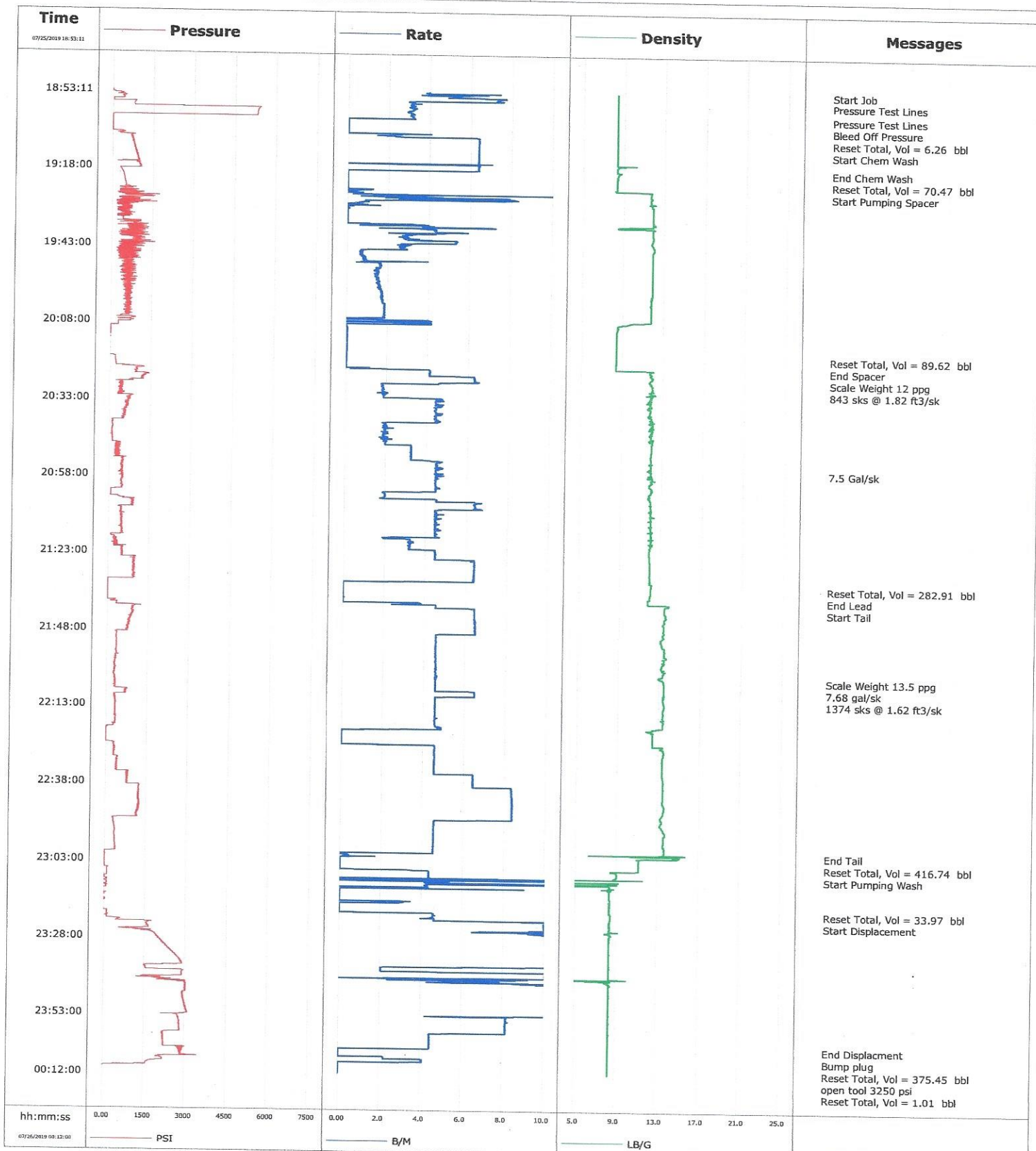


Well	LINDSEY 4	Client	PDC
Field	DJ	SIR No.	3025927
Engineer	NORM HASLAUER	Job Type	PRODUCTION
Country	United States	Job Date	07-25-2019





Cementing Service Report

				Customer PDC		Job Number 3025927											
Well LINDSEY 4 EB2L-00888		Location (legal)		Schlumberger Location		Job Start Jul/25/2019											
Field DJ		Formation Name/Type		Deviation deg		Bit Size in		Well MD 16667.0 ft		Well TVD 6519.0 ft							
County WELD		State/Province Colorado		BHP psi		BHST 215 degF		BHCT 215 degF		Pore Press. Gradient lb/gal							
Well Master 0064182860		API/UWI															
Rig Name E161		Drilled For Oil & Gas		Service Via Land		Casing/Liner											
Offshore Zone		Well Class New		Well Type Development		Depth, ft		Size, in		Weight, lb/ft		Grade		Thread			
						1631.0		9.6		36.0							
						16667.0		5.5		20.0							
Drilling Fluid Type		Max. Density lb/gal		Plastic Viscosity cP		Tubing/Drill Pipe											
Service Line Cementing		Job Type PRODUCTION				T/D		Depth, ft		Size, in		Weight, lb/ft		Grade		Thread	
Max. Allowed Tub. Press psi		Max. Allowed Ann. Press psi		WH Connection Double Cement head		Perforations/Open Hole											
						Top, ft		Bottom, ft		shot/ft		No. of Shots		Total Interval ft			
						ft		ft						ft			
						ft		ft						Diameter in			
						ft		ft									
Service Instructions Provide cement and services for a 5 1/2" production string. 8-1/2" OH TD: 16,675' 9 5/8" SURFACE: 1,631' 5-1/2" 20LB P-110HC PRODUCTION CASING: 16,675' TVD: 6,700' TOP OF LEAD CEMENT: 500' (NO EXCESS) TOP OF TAIL CEMENT: 7,000' (NO						Treat Down Casing		Displacement 369.0 bbl		Packer Type		Packer Depth ft					
						Tubing Vol. bbl		Casing Vol. 371.0 bbl		Annular Vol. bbl		Openhole Vol. bbl					
Casing/Tubing Secured <input checked="" type="checkbox"/>		1 Hole Vol. Circulated prior to Cement <input checked="" type="checkbox"/>				Casing Tools		Squeeze Job									
Lift Pressure 2234 psi						Shoe Type Float		Squeeze Type									
Pipe Rotated <input type="checkbox"/>		Pipe Reciprocated <input type="checkbox"/>				Shoe Depth 16667.0 ft		Tool Type									
No. Centralizers		Top Plugs 1		Bottom Plugs 2		Stage Tool Type		Tool Depth ft									
Cement Head Type						Stage Tool Depth ft		Tail Pipe Size in									
Job Scheduled For Jul/25/2019		Arrived on Location Jul/25/2019		Leave Location Jul/25/2019		Collar Type Float		Tail Pipe Depth ft									
						Collar Depth 16651.0 ft		Sqz. Total Vol. bbl									
Date		Time 24-hr clock		Treating Pressure PSI		Flow Rate B/M		Density LB/G		Volume BBL		Message					
07/25/2019		18:53:11		1		4.0		8.33		0.0		Started Acquisition					
07/25/2019		18:53:12		1		3.9		8.33		0.0		Start Job					
07/25/2019		18:56:45		48		3.2		8.33		6.2		Pressure Test Lines					
07/25/2019		19:01:16		1802		3.1		8.33		6.3		Pressure Test Lines					
07/25/2019		19:01:20		68		3.2		8.33		6.3		Bleed Off Pressure					
07/25/2019		19:06:03		10		0.0		8.33		6.3		Reset Total, Vol = 6.26 bbl					
07/25/2019		19:06:31		10		0.0		8.33		6.3		Start Chem Wash					
07/25/2019		19:18:31		476		2.6		8.41		76.6		End Chem Wash					
07/25/2019		19:18:34		380		0.0		8.69		76.7		Reset Total, Vol = 70.47 bbl					
07/25/2019		19:24:41		647		1.2		10.87		76.8		Start Pumping Spacer					
07/25/2019		20:19:02		-2		0.0		8.40		166.3		Reset Total, Vol = 89.62 bbl					
07/25/2019		20:19:15		-1		0.0		8.40		166.4		End Spacer					
07/25/2019		20:22:00		219		0.0		8.39		166.4		Scale Weight 12 ppg					
07/25/2019		20:24:00		989		4.1		11.85		171.1		843 sks @ 1.82 ft3/sk					
07/25/2019		20:56:10		468		4.4		11.92		281.7		7.5 Gal/sk					
07/25/2019		21:33:48		9		0.0		12.02		449.3		Reset Total, Vol = 282.91 bbl					
07/25/2019		21:33:55		10		0.0		12.02		449.3		End Lead					
07/25/2019		21:36:00		9		0.0		11.98		449.3		Start Tail					
07/25/2019		22:04:00		311		4.6		13.39		579.6		Scale Weight 13.5 ppg					
07/25/2019		22:05:00		308		4.6		13.44		584.2		7.68 gal/sk					
07/25/2019		22:07:00		338		4.6		13.44		593.3		1374 sks @ 1.62 ft3/sk					

Well			Field	Job Start	Customer	Job Number
LINDSEY 4 EB2L-00888			DJ	Jul/25/2019	PDC	3025927
Date	Time 24-hr clock	Treating Pressure PSI	Flow Rate B/M	Density LB/G	Volume BBL	Message
07/25/2019	23:00:48	7	0.3	15.15	866.0	Reset Total, Vol = 416.74 bbl
07/25/2019	23:00:50	8	0.4	15.12	866.0	Start Pumping Wash
07/25/2019	23:19:42	4	0.7	8.37	900.0	Reset Total, Vol = 33.97 bbl
07/25/2019	23:19:45	115	2.8	8.39	900.0	Start Displacement
07/26/2019	00:04:00	3000	0.0	8.34	1275.4	End Displacment
07/26/2019	00:04:04	2739	0.0	8.34	1275.4	Bump plug
07/26/2019	00:05:37	2821	0.0	8.34	1275.4	Reset Total, Vol = 375.45 bbl
07/26/2019	00:06:44	3403	2.2	8.34	1275.8	open tool 3250 psi
07/26/2019	00:06:59	2145	2.2	8.34	1276.4	Reset Total, Vol = 1.01 bbl

Post Job Summary

Average Pump Rates, bbl/min					Volume of Fluid Injected, bbl				
Slurry	N2	Mud	Maximum Rate		Total Slurry	Mud	Spacer	N2	
					678.0		150.0		
Treating Pressure Summary, psi					Breakdown Fluid				
Maximum	Final	Average	Bump Plug to	Breakdown	Type	Volume	Density		
	0		2943			bbl	lb/gal		
Avg. N2 Percent	Designed Slurry Volume	Displacement	Mix Water Temp		Cement Circulated to Surface?		Volume		
%	668.0 bbl	370.0 bbl	75 degF		Washed Thru Perfs	<input checked="" type="checkbox"/>	bbl		
Customer or Authorized Representative	Schlumberger Supervisor		Circulation Lost		To		ft		
BRADY SHARP	NORM HASLAUER				Job Completed			<input checked="" type="checkbox"/>	