



Lat40°, Inc. 6250 W. 10th Street, Unit 2, Greeley, CO 970-515-5294

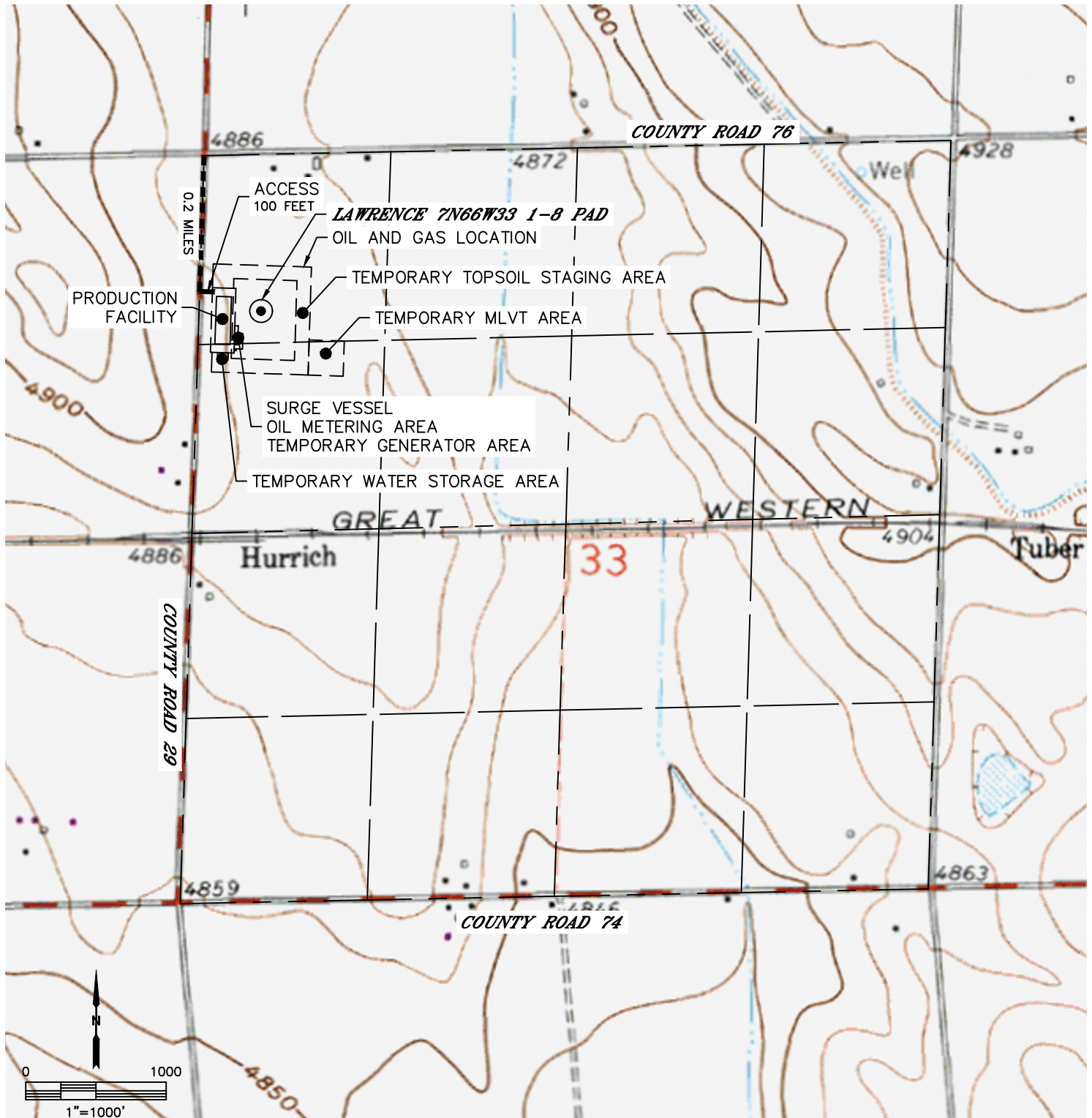
## ACCESS ROAD MAP

LAWRENCE 7N66W33 1-8 PAD

SECTION: 33  
TOWNSHIP: 7N  
RANGE: 66W  
6TH. P.M.  
WELD COUNTY, CO

### DRIVING DIRECTIONS TO LAWRENCE 7N66W33 1-8 PAD

FROM THE INTERSECTION OF COUNTY ROAD 76 AND COUNTY ROAD 29. GO SOUTH ON COUNTY ROAD 29 FOR 0.2 MILES TO A PROPOSED ACCESS TO THE EAST, THENCE EAST FOR 100 FEET TO THE PROPOSED PRODUCTION FACILITY AND DRILL PAD.





Lat40°, Inc. 6250 W. 10th Street, Unit 2, Greeley, CO 970-515-5294

# ACCESS ROAD MAP

LAWRENCE 7N66W33 1-8 PAD

SECTION: 33  
TOWNSHIP: 7N  
RANGE: 66W  
6TH. P.M.  
WELD COUNTY, CO

