



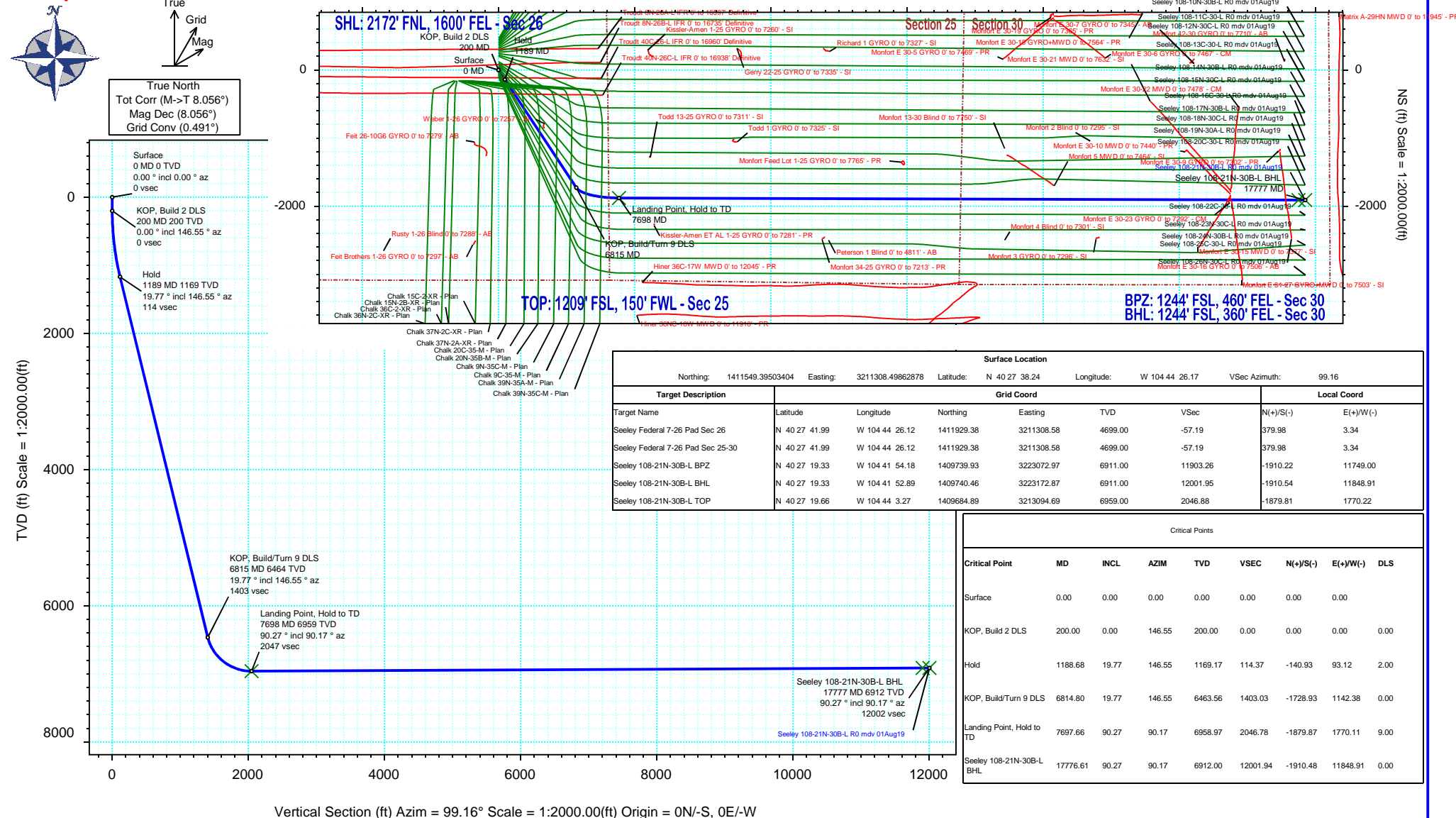
SRC Energy

Rev 0

Schlumberger

Borehole: Original Hole		Well: Seeley 108-21N-30B-L	Field: CO, Weld County (NAD 83 NZ) - SRC	Structure: SRC Energy 26-06N-66W (Chalk-Seeley Federal 7-26 Pad DSU 108)
Gravity & Magnetic Parameters Model: HDGM 2019 Dip: 66.847° Date: 31-Jul-2019 MagDec: 8.056° FS: 52216.185nT Gravity FS: 999.049mgm (9.80665 Based)			Surface Location NAD83 Colorado State Plane, Northern Zone, US Feet Lat: N 40 27 38.24 Northing: 1411549.4ftUS Grid Conv: 0.4907° Lon: W 104 44 26.17 Easting: 3211308.5ftUS Scale Fact: 0.99996354	
			Miscellaneous Slot: Seeley 108-21N-30B-L TVD Ref: KB 4ft(4699ft above MSL) Plan: Seeley 108-21N-30B-L R0 mdv 01Aug19	

Proposal





Seeley 108-21N-30B-L R0 mdv 01Aug19 Proposal Geodetic Report

(Def Plan)

Report Date: August 27, 2019 - 10:36 AM
Client: SRC Energy
Field: CO, Weld County (NAD 83 NZ) - SRC
Structure / Slot: SRC Energy 26-06N-66W (Chalk-Seeley Federal 7-26 Pad DSU 108) / Seeley 108-21N-30B-L
Well: Seeley 108-21N-30B-L
Borehole: Original Hole
UWI / API#: Unknown / 05-123-48899
Survey Name: Seeley 108-21N-30B-L R0 mdv 01Aug19
Survey Date: July 18, 2019
Tort / AHD / DDI / ERD Ratio: 99.231 ° / 12811.341 ft / 6.512 / 1.841
Coordinate Reference System: NAD83 Colorado State Plane, Northern Zone, US Feet
Location Lat / Long: N 40° 27' 38.23560", W 104° 44' 26.16720"
Location Grid N/E Y/X: N 1411549.395 ftUS, E 3211308.499 ftUS
CRS Grid Convergence Angle: 0.4907 °
Grid Scale Factor: 0.99996354
Version / Patch: 2.10.760.0

Survey / DLS Computation: Minimum Curvature / Lubinski
Vertical Section Azimuth: 99.159 ° (True North)
Vertical Section Origin: 0.000 ft, 0.000 ft
TVD Reference Datum: KB 4ft
TVD Reference Elevation: 4699.000 ft above MSL
Seabed / Ground Elevation: 4695.000 ft above MSL
Magnetic Declination: 8.056 °
Total Gravity Field Strength: 999.0491mgn (9.80665 Based)
Gravity Model: GARM
Total Magnetic Field Strength: 52216.185 nT
Magnetic Dip Angle: 66.847 °
Declination Date: July 31, 2019
Magnetic Declination Model: HDGM 2019
North Reference: True North
Grid Convergence Used: 0.0000 °
Total Corr Mag North->True North: 8.0558 °
Local Coord Referenced To: Well Head

Comments	MD (ft)	Incl (°)	Azim True (°)	TVD (ft)	VSEC (ft)	NS (ft)	EW (ft)	DLS (°/100ft)	Northing (ftUS)	Easting (ftUS)	Latitude (°)	Longitude (°)
Surface	0.00	0.00	0.00	0.00	0.00	0.00	0.00	N/A	1411549.40	3211308.50	40.460621	-104.740602
	100.00	0.00	146.55	100.00	0.00	0.00	0.00	0.00	1411549.40	3211308.50	40.460621	-104.740602
KOP, Build 2 DLS	200.00	0.00	146.55	200.00	0.00	0.00	0.00	0.00	1411549.40	3211308.50	40.460621	-104.740602
	300.00	2.00	146.55	299.98	1.18	-1.46	0.96	2.00	1411547.95	3211309.47	40.460617	-104.740599
	400.00	4.00	146.55	399.84	4.72	-5.82	3.85	2.00	1411543.61	3211312.40	40.460605	-104.740588
	500.00	6.00	146.55	499.45	10.63	-13.09	8.65	2.00	1411536.38	3211317.26	40.460585	-104.740571
	600.00	8.00	146.55	598.70	18.88	-23.26	15.37	2.00	1411526.27	3211324.07	40.460557	-104.740547
	700.00	10.00	146.55	697.47	29.47	-36.31	23.99	2.00	1411513.29	3211332.80	40.460521	-104.740516
	800.00	12.00	146.55	795.62	42.39	-52.23	34.51	2.00	1411497.46	3211343.45	40.460478	-104.740478
	900.00	14.00	146.55	893.06	57.61	-71.00	46.91	2.00	1411478.80	3211356.01	40.460426	-104.740433
	1000.00	16.00	146.55	989.64	75.14	-92.59	61.18	2.00	1411457.34	3211370.47	40.460367	-104.740382
	1100.00	18.00	146.55	1085.27	94.93	-116.98	77.30	2.00	1411433.08	3211386.79	40.460300	-104.740324
Hold	1188.68	19.77	146.55	1169.17	114.37	-140.93	93.12	2.00	1411409.27	3211402.82	40.460234	-104.740267
	1200.00	19.77	146.55	1179.82	116.96	-144.13	95.23	0.00	1411406.09	3211404.96	40.460225	-104.740260
	1300.00	19.77	146.55	1273.93	139.86	-172.35	113.88	0.00	1411378.03	3211423.85	40.460148	-104.740193
	1400.00	19.77	146.55	1368.03	162.77	-200.58	132.53	0.00	1411349.97	3211442.74	40.460070	-104.740126
	1500.00	19.77	146.55	1462.13	185.67	-228.80	151.18	0.00	1411321.90	3211461.63	40.459993	-104.740059
	1600.00	19.77	146.55	1556.24	208.58	-257.03	169.83	0.00	1411293.84	3211480.52	40.459915	-104.739992
	1700.00	19.77	146.55	1650.34	231.48	-285.25	188.48	0.00	1411265.78	3211499.41	40.459838	-104.739925
	1800.00	19.77	146.55	1744.45	254.39	-313.48	207.13	0.00	1411237.71	3211518.30	40.459761	-104.739858
	1900.00	19.77	146.55	1838.55	277.29	-341.71	225.78	0.00	1411209.65	3211537.19	40.459683	-104.739791
	2000.00	19.77	146.55	1932.65	300.20	-369.93	244.43	0.00	1411181.59	3211556.08	40.459606	-104.739724
	2100.00	19.77	146.55	2026.76	323.10	-398.16	263.08	0.00	1411153.52	3211574.97	40.459528	-104.739657
	2200.00	19.77	146.55	2120.86	346.01	-426.38	281.73	0.00	1411125.46	3211593.86	40.459451	-104.739590
	2300.00	19.77	146.55	2214.96	368.91	-454.61	300.38	0.00	1411097.39	3211612.75	40.459373	-104.739523
	2400.00	19.77	146.55	2309.07	391.82	-482.83	319.03	0.00	1411069.33	3211631.64	40.459296	-104.739456
	2500.00	19.77	146.55	2403.17	414.72	-511.06	337.68	0.00	1411041.27	3211650.53	40.459218	-104.739389
	2600.00	19.77	146.55	2497.27	437.63	-539.28	356.33	0.00	1411013.20	3211669.42	40.459141	-104.739322
	2700.00	19.77	146.55	2591.38	460.53	-567.51	374.98	0.00	1410985.14	3211688.31	40.459063	-104.739255
	2800.00	19.77	146.55	2685.48	483.44	-595.73	393.63	0.00	1410957.08	3211707.20	40.458986	-104.739187
	2900.00	19.77	146.55	2779.59	506.34	-623.96	412.28	0.00	1410929.01	3211726.09	40.458908	-104.739120
	3000.00	19.77	146.55	2873.69	529.25	-652.19	430.93	0.00	1410900.95	3211744.98	40.458831	-104.739053
	3100.00	19.77	146.55	2967.79	552.15	-680.41	449.58	0.00	1410872.88	3211763.87	40.458753	-104.738986
	3200.00	19.77	146.55	3061.90	575.06	-708.64	468.23	0.00	1410844.82	3211782.76	40.458676	-104.738919
	3300.00	19.77	146.55	3156.00	597.96	-736.86	486.88	0.00	1410816.76	3211801.65	40.458598	-104.738852
	3400.00	19.77	146.55	3250.10	620.87	-765.09	505.53	0.00	1410788.69	3211820.54	40.458521	-104.738785
	3500.00	19.77	146.55	3344.21	643.77	-793.31	524.18	0.00	1410760.63	3211839.43	40.458443	-104.738718
	3600.00	19.77	146.55	3438.31	666.68	-821.54	542.83	0.00	1410732.57	3211858.32	40.458366	-104.738651
	3700.00	19.77	146.55	3532.42	689.58	-849.76	561.48	0.00	1410704.50	3211877.21	40.458288	-104.738584
	3800.00	19.77	146.55	3626.52	712.49	-877.99	580.13	0.00	1410676.44	3211896.10	40.458211	-104.738517
	3900.00	19.77	146.55	3720.62	735.39	-906.22	598.77	0.00	1410648.38	3211914.99	40.458134	-104.738450
	4000.00	19.77	146.55	3814.73	758.30	-934.44	617.42	0.00	1410620.31	3211933.88	40.458056	-104.738383
	4100.00	19.77	146.55	3908.83	781.20	-962.67	636.07	0.00	1410592.25	3211952.77	40.457979	-104.738316
	4200.00	19.77	146.55	4002.93	804.11	-990.89	654.72	0.00	1410564.18	3211971.66	40.457901	-104.738249
	4300.00	19.77	146.55	4097.04	827.01	-1019.12	673.37	0.00	1410536.12	3211990.55	40.457824	-104.738182
	4400.00	19.77	146.55	4191.14	849.92	-1047.34	692.02	0.00	1410508.06	3212009.44	40.457746	-104.738115
	4500.00	19.77	146.55	4285.25	872.82	-1075.57	710.67	0.00	1410479.99	3212028.33	40.457669	-104.738048
	4600.00	19.77	146.55	4379.35	895.73	-1103.79	729.32	0.00	1410451.93	3212047.22	40.457591	-104.737981
	4700.00	19.77	146.55	4473.45	918.63	-1132.02	747.97	0.00	1410423.87	3212066.11	40.457514	-104.737914
	4800.00	19.77	146.55	4567.56	941.54	-1160.24	766.62	0.00	1410395.80	3212085.00	40.457436	-104.737847
	4900.00	19.77	146.55	4661.66	964.44	-1188.47	785.27	0.00	1410367.74	3212103.89	40.457359	-104.737780
	5000.00	19.77	146.55	4755.76	987.35	-1216.70	803.92	0.00	1410339.67	3212122.78	40.457281	-104.737713
	5100.00	19.77	146.55	4849.87	1010.25	-1244.92	822.57	0.00	1410311.61	3212141.67	40.457204	-104.737646
	5200.00	19.77	146.55	4943.97	1033.16	-1273.15	841.22	0.00	1410283.55	3212160.56	40.457126	-104.737579
	5300.00	19.77	146.55	5038.07	1056.06	-1301.37	859.87	0.00	1410255.48	3212179.45	40.457049	-104.737512
	5400.00	19.77	146.55	5132.18	1078.97	-1329.60	878.52	0.00	1410227.42	3212198.34	40.456971	-104.737445
	5500.00	19.77	146.55	5226.28	1101.87	-1357.82	897.17	0.00	1410199.36	3212217.23	40.456894	-104.737378
	5600.00	19.77	146.55	5320.39	1124.78	-1386.05	915.82	0.00	1410171.29	3212236.12	40.456816	-104.737311
	5700.00	19.77	146.55	5414.49	1147.68	-1414.27	934.47	0.00	1410143.23	3212255.01	40.456739	-104.737244
	5800.00	19.77	146.55	5508.59	1170.59	-1442.50	953.12	0.00	1410115.17	3212273.90	40.456661	-104.737177
	5900.00	19.77	146.55	5602.70	1193.49	-1470.73	971.77	0.00	1410087.10	3212292.79	40.456584	-104.737110
	6000.00	19.77	146.55	5696.80	1216.40	-1498.95	990.42	0.00	1410059.04	3212311.68	40.456507	-104.737043
	6100.00	19.77	146.55	5790.90	1239.30	-1527.18	1009.07	0.00	1410030.97	3212330.57	40.456429	-104.736976
	6200.00	19.77	146.55	5885.01	1262.21	-1555.40	1027.72	0.00	1410002.91	3212349.46	40.456352	-104.736909
	6300.00	19.77	146.55	5979.11	1285.11	-1583.63	1046.37	0.00	1409974.85	3212368.35	40.456274	-104.736842
	6400.00	19.77	146.55	6073.22	1308.02	-1611.85	1065.02	0.00	1409946.78	3212387.24	40.456197	-104.736775
	6500.00	19.77	146.55	6167.32	1330.92	-1640.08	1083.67	0.00	1409918.72	3212406.13	40.456119	-104.736708
	6600.00	19.77	146.55	6261.42	1353.83	-1668.30	1102.32	0.00	1409890.66	3212425.02	40.456042	-104.736641
	6700.00	19.77	146.55	6355.53	1376.73	-1696.53	1120.97	0.00	1409862.59	3212443.91	40.455964	-104.736574
	6800.00	19.77	146.55	6449.63	1399.64	-1724.75	1139.62	0.00	1409834.53	3212462.80	40.455887	-104.736507
KOP, Build/Turn 9 DLS	6814.80	19.77	146.55	6463.56	1403.03	-1728.93	1142.38	0.00	1409830.38	3212465.60	40.455875	-104.736497
	6900.00	24.68	130.85	6542.47	1427.96	-1752.63	1163.81	9.00	1409806.87	3212487.23	40.455810	-104.736420
	7000.00	31.80	119.09	6630.58	1470.58	-1779.15	1202.71	9.00	1409780.68	3212526.36	40.455737	-104.736280
	7100.00											

Comments	MD (ft)	Incl (°)	Azim True (°)	TVD (ft)	VSEC (ft)	NS (ft)	EW (ft)	DLS (°/100ft)	Northing (ftUS)	Easting (ftUS)	Latitude (°)	Longitude (°)
Landing Point, Hold to TD	7300.00	56.19	101.81	6845.53	1673.14	-1844.30	1397.39	9.00	1409717.20	3212721.57	40.455558	-104.735581
	7400.00	64.68	98.39	6894.84	1760.01	-1859.42	1482.94	9.00	1409702.81	3212807.25	40.455517	-104.735273
	7500.00	73.25	95.42	6930.71	1853.17	-1870.56	1575.51	9.00	1409692.47	3212899.90	40.455486	-104.734941
	7600.00	81.85	92.71	6952.26	1950.33	-1877.43	1672.81	9.00	1409686.43	3212997.26	40.455468	-104.734591
	7697.66	90.27	90.17	6958.97	2046.78	-1879.87	1770.11	9.00	1409684.82	3213094.58	40.455461	-104.734241
	7700.00	90.27	90.17	6958.96	2049.09	-1879.88	1772.45	0.00	1409684.84	3213096.92	40.455461	-104.734233
	7800.00	90.27	90.17	6958.49	2147.86	-1880.18	1872.45	0.00	1409685.39	3213196.91	40.455460	-104.733874
	7900.00	90.27	90.17	6958.03	2246.64	-1880.49	1972.45	0.00	1409685.94	3213296.90	40.455459	-104.733514
	8000.00	90.27	90.17	6957.56	2345.41	-1880.79	2072.45	0.00	1409686.49	3213396.90	40.455458	-104.733155
	8100.00	90.27	90.17	6957.09	2444.18	-1881.09	2172.45	0.00	1409687.05	3213496.89	40.455457	-104.732796
	8200.00	90.27	90.17	6956.63	2542.95	-1881.40	2272.44	0.00	1409687.60	3213596.88	40.455457	-104.732436
	8300.00	90.27	90.17	6956.16	2641.72	-1881.70	2372.44	0.00	1409688.15	3213696.88	40.455456	-104.732077
	8400.00	90.27	90.17	6955.70	2740.49	-1882.00	2472.44	0.00	1409688.70	3213796.87	40.455455	-104.731718
	8500.00	90.27	90.17	6955.23	2839.27	-1882.31	2572.44	0.00	1409689.26	3213896.86	40.455454	-104.731358
	8600.00	90.27	90.17	6954.76	2938.04	-1882.61	2672.44	0.00	1409689.81	3213996.86	40.455453	-104.730999
	8700.00	90.27	90.17	6954.30	3036.81	-1882.92	2772.44	0.00	1409690.36	3214096.85	40.455452	-104.730640
	8800.00	90.27	90.17	6953.83	3135.58	-1883.22	2872.43	0.00	1409690.91	3214196.84	40.455451	-104.730280
	8900.00	90.27	90.17	6953.37	3234.35	-1883.52	2972.43	0.00	1409691.47	3214296.84	40.455450	-104.729921
	9000.00	90.27	90.17	6952.90	3333.13	-1883.83	3072.43	0.00	1409692.02	3214396.83	40.455450	-104.729562
	9100.00	90.27	90.17	6952.43	3431.90	-1884.13	3172.43	0.00	1409692.57	3214496.82	40.455449	-104.729202
	9200.00	90.27	90.17	6951.97	3530.67	-1884.43	3272.43	0.00	1409693.13	3214596.82	40.455448	-104.728843
	9300.00	90.27	90.17	6951.50	3629.44	-1884.74	3372.43	0.00	1409693.68	3214696.81	40.455447	-104.728484
	9400.00	90.27	90.17	6951.04	3728.21	-1885.04	3472.43	0.00	1409694.23	3214796.81	40.455446	-104.728124
	9500.00	90.27	90.17	6950.57	3826.98	-1885.35	3572.42	0.00	1409694.78	3214896.80	40.455445	-104.727765
	9600.00	90.27	90.17	6950.10	3925.75	-1885.65	3672.42	0.00	1409695.34	3214996.79	40.455444	-104.727406
	9700.00	90.27	90.17	6949.64	4024.53	-1885.95	3772.42	0.00	1409695.89	3215096.79	40.455444	-104.727046
	9800.00	90.27	90.17	6949.17	4123.30	-1886.26	3872.42	0.00	1409696.44	3215196.78	40.455443	-104.726687
	9900.00	90.27	90.17	6948.71	4222.07	-1886.56	3972.42	0.00	1409696.99	3215296.77	40.455442	-104.726328
	10000.00	90.27	90.17	6948.24	4320.84	-1886.86	4072.42	0.00	1409697.55	3215396.77	40.455441	-104.725968
	10100.00	90.27	90.17	6947.77	4419.61	-1887.17	4172.41	0.00	1409698.10	3215496.76	40.455440	-104.725609
	10200.00	90.27	90.17	6947.31	4518.39	-1887.47	4272.41	0.00	1409698.65	3215596.75	40.455439	-104.725250
	10300.00	90.27	90.17	6946.84	4617.16	-1887.77	4372.41	0.00	1409699.20	3215696.75	40.455438	-104.724890
	10400.00	90.27	90.17	6946.38	4715.93	-1888.08	4472.41	0.00	1409699.76	3215796.74	40.455437	-104.724531
	10500.00	90.27	90.17	6945.91	4814.70	-1888.38	4572.41	0.00	1409700.31	3215896.73	40.455436	-104.724172
	10600.00	90.27	90.17	6945.44	4913.47	-1888.69	4672.41	0.00	1409700.86	3215996.73	40.455436	-104.723812
	10700.00	90.27	90.17	6944.98	5012.25	-1888.99	4772.41	0.00	1409701.42	3216096.72	40.455435	-104.723453
	10800.00	90.27	90.17	6944.51	5111.02	-1889.29	4872.40	0.00	1409701.97	3216196.71	40.455434	-104.723094
	10900.00	90.27	90.17	6944.05	5209.79	-1889.60	4972.40	0.00	1409702.52	3216296.71	40.455433	-104.722735
	11000.00	90.27	90.17	6943.58	5308.56	-1889.90	5072.40	0.00	1409703.07	3216396.70	40.455432	-104.722375
	11100.00	90.27	90.17	6943.11	5407.33	-1890.20	5172.40	0.00	1409703.63	3216496.70	40.455431	-104.722016
	11200.00	90.27	90.17	6942.65	5506.10	-1890.51	5272.40	0.00	1409704.18	3216596.69	40.455430	-104.721657
	11300.00	90.27	90.17	6942.18	5604.88	-1890.81	5372.40	0.00	1409704.73	3216696.68	40.455429	-104.721297
	11400.00	90.27	90.17	6941.72	5703.65	-1891.12	5472.39	0.00	1409705.28	3216796.68	40.455428	-104.720938
	11500.00	90.27	90.17	6941.25	5802.42	-1891.42	5572.39	0.00	1409705.84	3216896.67	40.455428	-104.720579
	11600.00	90.27	90.17	6940.78	5901.19	-1891.72	5672.39	0.00	1409706.39	3216996.66	40.455427	-104.720219
	11700.00	90.27	90.17	6940.32	5999.96	-1892.03	5772.39	0.00	1409706.94	3217096.66	40.455426	-104.719860
	11800.00	90.27	90.17	6939.85	6098.73	-1892.33	5872.39	0.00	1409707.49	3217196.65	40.455425	-104.719501
	11900.00	90.27	90.17	6939.39	6197.51	-1892.63	5972.39	0.00	1409708.05	3217296.64	40.455424	-104.719141
	12000.00	90.27	90.17	6938.92	6296.28	-1892.94	6072.38	0.00	1409708.60	3217396.64	40.455423	-104.718782
	12100.00	90.27	90.17	6938.45	6395.05	-1893.24	6172.38	0.00	1409709.15	3217496.63	40.455422	-104.718423
	12200.00	90.27	90.17	6937.99	6493.82	-1893.54	6272.38	0.00	1409709.71	3217596.62	40.455421	-104.718063
	12300.00	90.27	90.17	6937.52	6592.59	-1893.85	6372.38	0.00	1409710.26	3217696.62	40.455420	-104.717704
	12400.00	90.27	90.17	6937.06	6691.37	-1894.15	6472.38	0.00	1409710.81	3217796.61	40.455419	-104.717345
	12500.00	90.27	90.17	6936.59	6790.14	-1894.46	6572.38	0.00	1409711.36	3217896.61	40.455419	-104.716985
	12600.00	90.27	90.17	6936.12	6888.91	-1894.76	6672.38	0.00	1409711.92	3217996.60	40.455418	-104.716626
	12700.00	90.27	90.17	6935.66	6987.68	-1895.06	6772.37	0.00	1409712.47	3218096.59	40.455417	-104.716267
	12800.00	90.27	90.17	6935.19	7086.45	-1895.37	6872.37	0.00	1409713.02	3218196.59	40.455416	-104.715907
	12900.00	90.27	90.17	6934.73	7185.22	-1895.67	6972.37	0.00	1409713.57	3218296.58	40.455415	-104.715548
	13000.00	90.27	90.17	6934.26	7284.00	-1895.97	7072.37	0.00	1409714.13	3218396.57	40.455414	-104.715189
	13100.00	90.27	90.17	6933.79	7382.77	-1896.28	7172.37	0.00	1409714.68	3218496.57	40.455413	-104.714829
	13200.00	90.27	90.17	6933.33	7481.54	-1896.58	7272.37	0.00	1409715.23	3218596.56	40.455412	-104.714470
	13300.00	90.27	90.17	6932.86	7580.31	-1896.89	7372.36	0.00	1409715.78	3218696.55	40.455411	-104.714111
	13400.00	90.27	90.17	6932.40	7679.08	-1897.19	7472.36	0.00	1409716.34	3218796.55	40.455410	-104.713751
	13500.00	90.27	90.17	6931.93	7777.85	-1897.49	7572.36	0.00	1409716.89	3218896.54	40.455409	-104.713392
	13600.00	90.27	90.17	6931.46	7876.63	-1897.80	7672.36	0.00	1409717.44	3218996.53	40.455409	-104.713033
	13700.00	90.27	90.17	6931.00	7975.40	-1898.10	7772.36	0.00	1409718.00	3219096.53	40.455408	-104.712673
	13800.00	90.27	90.17	6930.53	8074.17	-1898.40	7872.36	0.00	1409718.55	3219196.52	40.455407	-104.712314
	13900.00	90.27	90.17	6930.07	8172.94	-1898.71	7972.36	0.00	1409719.10	3219296.51	40.455406	-104.711955
	14000.00	90.27	90.17	6929.60	8271.71	-1899.01	8072.35	0.00	1409719.65	3219396.51	40.455405	-104.711595
	14100.00	90.27	90.17	6929.13	8370.48	-1899.31	8172.35	0.00	1409720.21	3219496.50	40.455404	-104.711236
	14200.00	90.27	90.17	6928.67	8469.26	-1899.62	8272.35	0.00	1409720.76	3219596.50	40.455403	-104.710877
	14300.00	90.27	90.17	6928.20	8568.03	-1899.92	8372.35	0.00	1409721.31	3219696.49	40.455402	-104.710517
	14400.00	90.27	90.17	6927.74	8666.80	-1900.23	8472.35	0.00	1409721.86	3219796.48	40.455401	-104.710158
	14500.00	90.27	90.17	6927.27	8765.57	-1900.53	8572.35	0.00	1409722.42	3219896.48	40.455400	-104.709799
	14600.00	90.27	90.17	6926.80	8864.34	-1900.83	8672.34	0.00	1409722.97	3219996.47	40.455399	-104.709439
	14700.00	90.27	90.17	6926.34	8963.12	-1901.14	8772.34	0.00	1409723.52	3220096.46	40.455398	-104.709080
	14800.00	90.27	90.17	6925.87	9061.89	-1901.44	8872.34	0.00	1409724.07	3220196.46		

Comments	MD (ft)	Incl (°)	Azim True (°)	TVD (ft)	VSEC (ft)	NS (ft)	EW (ft)	DLS (°/100ft)	Northing (ftUS)	Easting (ftUS)	Latitude (°)	Longitude (°)
----------	------------	-------------	------------------	-------------	--------------	------------	------------	------------------	--------------------	-------------------	-----------------	------------------

Survey Type: Def Plan

Survey Error Model: ISCWSA Rev 0 *** 3-D 95.000% Confidence 2.7955 sigma
Survey Program:

Description	Part	MD From (ft)	MD To (ft)	EOU Freq (ft)	Hole Size (in)	Casing Diameter (in)	Expected Max Inclination (deg)	Survey Tool Type	Borehole / Survey
	1	0.000	4.000	1/100.000	13.500	9.625		NAL_MWD_IFR1-Depth Only	Original Hole / Seeley 108-21N-30B-L R0 mdv 01Aug19
	1	4.000	1800.000	1/100.000	13.500	9.625		NAL_MWD_IFR1	Original Hole / Seeley 108-21N-30B-L R0 mdv 01Aug19
	1	1800.000	17776.610	1/100.000	8.500	5.500		NAL_MWD_IFR1+MS	Original Hole / Seeley 108-21N-30B-L R0 mdv 01Aug19