



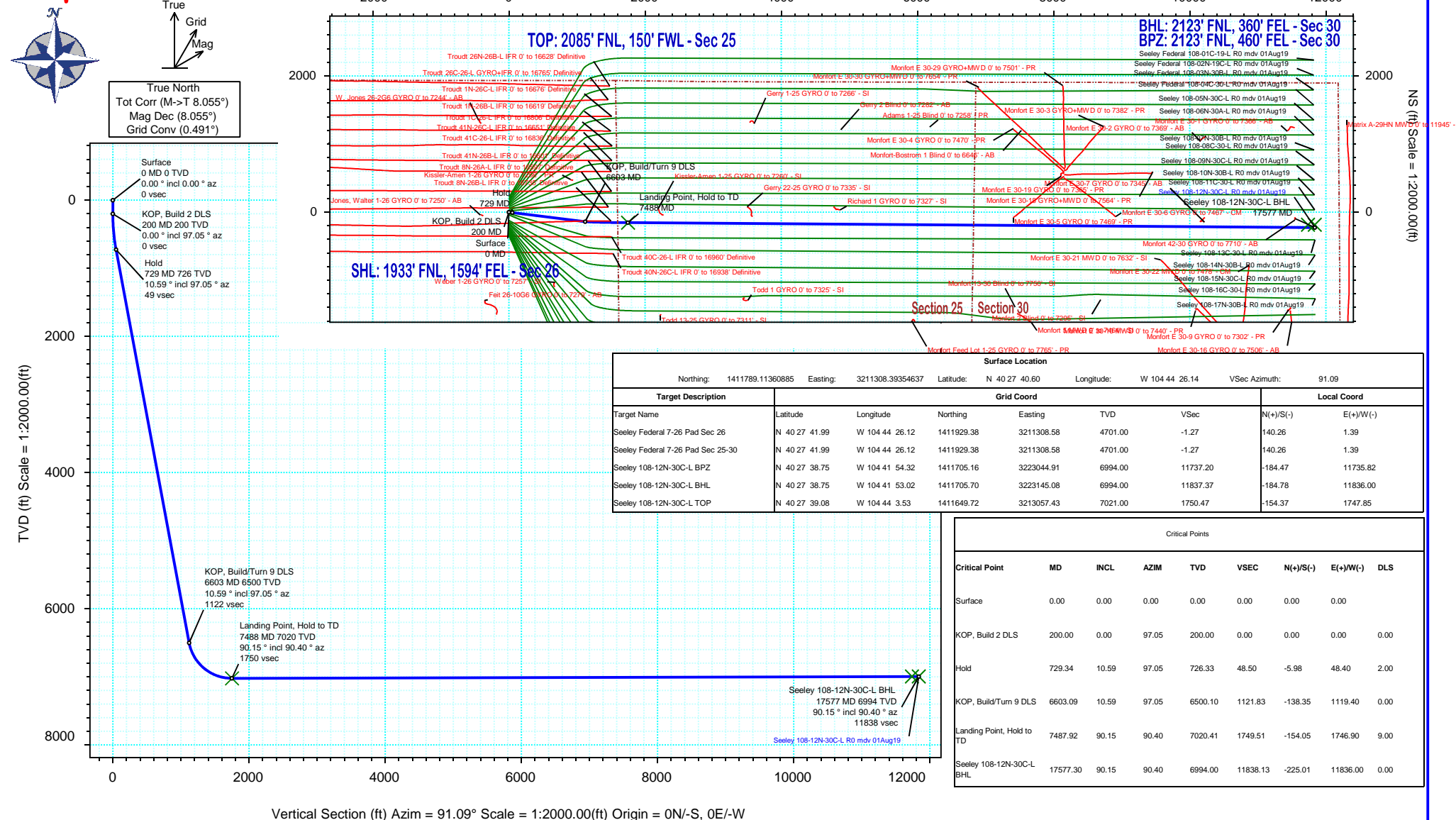
# SRC Energy

## Rev 0

# Schlumberger

Borehole:		Well:	Field:	Structure:
Original Hole		Seeley 108-12N-30C-L	CO, Weld County (NAD 83 NZ) - SRC	SRC Energy 26-06N-66W (Chalk-Seeley Federal 7-26 Pad DSU 108)
Gravity & Magnetic Parameters			Surface Location	Miscellaneous
Model:	HdGM 2019	Dip: 66.847°	NAD83 Colorado State Plane, Northern Zone, US Feet	Slot: Seeley 108-12N-30C-L
MagDec:	8.055°	Date: 31-Jul-2019	Lat: N 40 27 40.60	TVD Ref: KB 4ft(4701ft above MSL)
FS:	52216.305nT	Gravity FS: 999.049mgn (9.80665 Based)	North: 1411789.11ftUS	Plan: Seeley 108-12N-30C-L R0 mdv 01Aug19
			Grid Conv: 0.4907°	
			Scale Fact: 0.99996358	

## Proposal





## Seeley 108-12N-30C-L R0 mdv 01Aug19 Proposal Geodetic Report

(Def Plan)

**Report Date:** August 27, 2019 - 09:28 AM  
**Client:** SRC Energy  
**Field:** CO, Weld County (NAD 83 NZ) - SRC  
**Structure / Slot:** SRC Energy 26-06N-66W (Chalk-Seeley Federal 7-26 Pad DSU 108) / Seeley 108-12N-30C-L  
**Well:** Seeley 108-12N-30C-L  
**Borehole:** Original Hole  
**UWI / API#:** Unknown / 05-123-48898  
**Survey Name:** Seeley 108-12N-30C-L R0 mdv 01Aug19  
**Survey Date:** July 18, 2019  
**Tort / AHD / DDI / ERD Ratio:** 90.222 ° / 11845.067 ft / 6.427 / 1.687  
**Coordinate Reference System:** NAD83 Colorado State Plane, Northern Zone, US Feet  
**Location Lat / Long:** N 40° 27' 40.60440", W 104° 44' 26.14200"  
**Location Grid N/E Y/X:** N 1411789.114 ftUS, E 3211308.394 ftUS  
**CRS Grid Convergence Angle:** 0.4907 °  
**Grid Scale Factor:** 0.99996358  
**Version / Patch:** 2.10.760.0

**Survey / DLS Computation:** Minimum Curvature / Lubinski  
**Vertical Section Azimuth:** 91.089 ° (True North)  
**Vertical Section Origin:** 0.000 ft, 0.000 ft  
**TVD Reference Datum:** KB 4ft  
**TVD Reference Elevation:** 4701.000 ft above MSL  
**Seabed / Ground Elevation:** 4697.000 ft above MSL  
**Magnetic Declination:** 8.055 °  
**Total Gravity Field Strength:** 999.0490mgn (9.80665 Based)  
**Gravity Model:** GARM  
**Total Magnetic Field Strength:** 52216.305 nT  
**Magnetic Dip Angle:** 66.847 °  
**Declination Date:** July 31, 2019  
**Magnetic Declination Model:** HDGM 2019  
**North Reference:** True North  
**Grid Convergence Used:** 0.0000 °  
**Total Corr Mag North->True North:** 8.0553 °  
**Local Coord Referenced To:** Well Head

Comments	MD (ft)	Incl (°)	Azim True (°)	TVD (ft)	VSEC (ft)	NS (ft)	EW (ft)	DLS (°/100ft)	Northing (ftUS)	Easting (ftUS)	Latitude (°)	Longitude (°)
Surface	0.00	0.00	0.00	0.00	0.00	0.00	0.00	N/A	1411789.11	3211308.39	40.461279	-104.740595
	100.00	0.00	97.05	100.00	0.00	0.00	0.00	0.00	1411789.11	3211308.39	40.461279	-104.740595
KOP, Build 2	200.00	0.00	97.05	200.00	0.00	0.00	0.00	0.00	1411789.11	3211308.39	40.461279	-104.740595
DLS	300.00	2.00	97.05	299.98	1.74	-0.21	1.73	2.00	1411788.91	3211310.13	40.461278	-104.740589
	400.00	4.00	97.05	399.84	6.94	-0.86	6.93	2.00	1411788.32	3211315.33	40.461277	-104.740570
	500.00	6.00	97.05	499.45	15.61	-1.92	15.58	2.00	1411787.32	3211323.98	40.461274	-104.740539
	600.00	8.00	97.05	598.70	27.73	-3.42	27.67	2.00	1411785.93	3211336.09	40.461270	-104.740496
	700.00	10.00	97.05	697.47	43.29	-5.34	43.19	2.00	1411784.15	3211351.63	40.461264	-104.740440
Hold	729.34	10.59	97.05	726.33	48.50	-5.98	48.40	2.00	1411783.55	3211356.84	40.461263	-104.740421
	800.00	10.59	97.05	795.79	61.41	-7.57	61.28	0.00	1411782.06	3211369.73	40.461258	-104.740375
	900.00	10.59	97.05	894.09	79.69	-9.83	79.51	0.00	1411779.97	3211387.99	40.461252	-104.740309
	1000.00	10.59	97.05	992.39	97.96	-12.08	97.75	0.00	1411777.87	3211406.24	40.461246	-104.740244
	1100.00	10.59	97.05	1090.68	116.23	-14.33	115.98	0.00	1411775.77	3211424.49	40.461240	-104.740178
	1200.00	10.59	97.05	1188.98	134.51	-16.59	134.22	0.00	1411773.68	3211442.74	40.461233	-104.740113
	1300.00	10.59	97.05	1287.28	152.78	-18.84	152.45	0.00	1411771.58	3211460.99	40.461227	-104.740047
	1400.00	10.59	97.05	1385.58	171.05	-21.10	170.68	0.00	1411769.48	3211479.24	40.461221	-104.739982
	1500.00	10.59	97.05	1483.87	189.33	-23.35	188.92	0.00	1411767.38	3211497.50	40.461215	-104.739916
	1600.00	10.59	97.05	1582.17	207.60	-25.60	207.15	0.00	1411765.29	3211515.75	40.461209	-104.739851
	1700.00	10.59	97.05	1680.47	225.87	-27.86	225.38	0.00	1411763.19	3211534.00	40.461203	-104.739785
	1800.00	10.59	97.05	1778.77	244.15	-30.11	243.62	0.00	1411761.09	3211552.25	40.461196	-104.739720
	1900.00	10.59	97.05	1877.07	262.42	-32.36	261.85	0.00	1411758.99	3211570.50	40.461190	-104.739654
	2000.00	10.59	97.05	1975.36	280.69	-34.62	280.09	0.00	1411756.90	3211588.75	40.461184	-104.739588
	2100.00	10.59	97.05	2073.66	298.97	-36.87	298.32	0.00	1411754.80	3211607.01	40.461178	-104.739523
	2200.00	10.59	97.05	2171.96	317.24	-39.12	316.55	0.00	1411752.70	3211625.26	40.461172	-104.739457
	2300.00	10.59	97.05	2270.26	335.51	-41.38	334.79	0.00	1411750.61	3211643.51	40.461165	-104.739392
	2400.00	10.59	97.05	2368.55	353.79	-43.63	353.02	0.00	1411748.51	3211661.76	40.461159	-104.739326
	2500.00	10.59	97.05	2466.85	372.06	-45.88	371.25	0.00	1411746.41	3211680.01	40.461153	-104.739261
	2600.00	10.59	97.05	2565.15	390.33	-48.14	389.49	0.00	1411744.31	3211698.26	40.461147	-104.739195
	2700.00	10.59	97.05	2663.45	408.61	-50.39	407.72	0.00	1411742.22	3211716.52	40.461141	-104.739130
	2800.00	10.59	97.05	2761.75	426.88	-52.65	425.96	0.00	1411740.12	3211734.77	40.461134	-104.739064
	2900.00	10.59	97.05	2860.04	445.15	-54.90	444.19	0.00	1411738.02	3211753.02	40.461128	-104.738999
	3000.00	10.59	97.05	2958.34	463.43	-57.15	462.42	0.00	1411735.92	3211771.27	40.461122	-104.738933
	3100.00	10.59	97.05	3056.64	481.70	-59.41	480.66	0.00	1411733.83	3211789.52	40.461116	-104.738868
	3200.00	10.59	97.05	3154.94	499.97	-61.66	498.89	0.00	1411731.73	3211807.77	40.461110	-104.738802
	3300.00	10.59	97.05	3253.23	518.25	-63.91	517.12	0.00	1411729.63	3211826.03	40.461104	-104.738737
	3400.00	10.59	97.05	3351.53	536.52	-66.17	535.36	0.00	1411727.54	3211844.28	40.461097	-104.738671
	3500.00	10.59	97.05	3449.83	554.79	-68.42	553.59	0.00	1411725.44	3211862.53	40.461091	-104.738606
	3600.00	10.59	97.05	3548.13	573.07	-70.67	571.83	0.00	1411723.34	3211880.78	40.461085	-104.738540
	3700.00	10.59	97.05	3646.43	591.34	-72.93	590.06	0.00	1411721.24	3211899.03	40.461079	-104.738475
	3800.00	10.59	97.05	3744.72	609.61	-75.18	608.29	0.00	1411719.15	3211917.28	40.461073	-104.738409
	3900.00	10.59	97.05	3843.02	627.88	-77.44	626.53	0.00	1411717.05	3211935.54	40.461066	-104.738343
	4000.00	10.59	97.05	3941.32	646.16	-79.69	644.76	0.00	1411714.95	3211953.79	40.461060	-104.738278
	4100.00	10.59	97.05	4039.62	664.43	-81.94	662.99	0.00	1411712.85	3211972.04	40.461054	-104.738212
	4200.00	10.59	97.05	4137.91	682.70	-84.20	681.23	0.00	1411710.76	3211990.29	40.461048	-104.738147
	4300.00	10.59	97.05	4236.21	700.98	-86.45	699.46	0.00	1411708.66	3212008.54	40.461042	-104.738081
	4400.00	10.59	97.05	4334.51	719.25	-88.70	717.69	0.00	1411706.56	3212026.79	40.461035	-104.738016
	4500.00	10.59	97.05	4432.81	737.52	-90.96	735.93	0.00	1411704.47	3212045.05	40.461029	-104.737950
	4600.00	10.59	97.05	4531.11	755.80	-93.21	754.16	0.00	1411702.37	3212063.30	40.461023	-104.737885
	4700.00	10.59	97.05	4629.40	774.07	-95.46	772.40	0.00	1411700.27	3212081.55	40.461017	-104.737819
	4800.00	10.59	97.05	4727.70	792.34	-97.72	790.63	0.00	1411698.17	3212099.80	40.461011	-104.737754
	4900.00	10.59	97.05	4826.00	810.62	-99.97	808.86	0.00	1411696.08	3212118.05	40.461005	-104.737688
	5000.00	10.59	97.05	4924.30	828.89	-102.22	827.10	0.00	1411693.98	3212136.30	40.460999	-104.737623
	5100.00	10.59	97.05	5022.59	847.16	-104.48	845.33	0.00	1411691.88	3212154.56	40.460992	-104.737557
	5200.00	10.59	97.05	5120.89	865.44	-106.73	863.56	0.00	1411689.78	3212172.81	40.460986	-104.737492
	5300.00	10.59	97.05	5219.19	883.71	-108.99	881.80	0.00	1411687.69	3212191.06	40.460980	-104.737426
	5400.00	10.59	97.05	5317.49	901.98	-111.24	900.03	0.00	1411685.59	3212209.31	40.460974	-104.737361
	5500.00	10.59	97.05	5415.79	920.26	-113.49	918.27	0.00	1411683.49	3212227.56	40.460967	-104.737295
	5600.00	10.59	97.05	5514.08	938.53	-115.75	936.50	0.00	1411681.40	3212245.81	40.460961	-104.737230
	5700.00	10.59	97.05	5612.38	956.80	-118.00	954.73	0.00	1411679.30	3212264.07	40.460955	-104.737164
	5800.00	10.59	97.05	5710.68	975.08	-120.25	972.97	0.00	1411677.20	3212282.32	40.460949	-104.737099
	5900.00	10.59	97.05	5808.98	993.35	-122.51	991.20	0.00	1411675.10	3212300.57	40.460943	-104.737033
	6000.00	10.59	97.05	5907.27	1011.62	-124.76	1009.43	0.00	1411673.01	3212318.82	40.460936	-104.736967
	6100.00	10.59	97.05	6005.57	1029.90	-127.01	1027.67	0.00	1411670.91	3212337.07	40.460930	-104.736902
	6200.00	10.59	97.05	6103.87	1048.17	-129.27	1045.90	0.00	1411668.81	3212355.32	40.460924	-104.736836
	6300.00	10.59	97.05	6202.17	1066.44	-131.52	1064.14	0.00	1411666.71	3212373.58	40.460918	-104.736771
	6400.00	10.59	97.05	6300.47	1084.72	-133.77	1082.37	0.00	1411664.62	3212391.83	40.460912	-104.736705
	6500.00	10.59	97.05	6398.76	1102.99	-136.03	1100.60	0.00	1411662.52	3212410.08	40.460906	-104.736640
	6600.00	10.59	97.05	6497.06	1121.26	-138.28	1118.84	0.00	1411660.42	3212428.33	40.460899	-104.736574
KOP, Build/Turn 9 DLS	6603.09	10.59	97.05	6500.10	1121.83	-138.35	1119.40	0.00	1411660.36	3212428.89	40.460899	-104.736572
	6700.00	19.28	93.95	6593.65	1146.71	-140.55	1144.24	9.00	1411658.37	3212453.75	40.460893	-104.736483
	6800.00	28.26	92.71	6685.07	1186.94	-142.81	1184.44	9.00	1411656.46	3212493.97	40.460887	-104.736339
	6900.00	37.25	92.03	6769.08	1240.98	-145.01	1238.45	9.00	1411654.72	3212547.99	40.460881	-104.736144
	7000.00	46.25	91.59	6843.61	1307.50	-147.09	1304.94	9.00	1411653.21	3212614.49	40.460875	-104.735906
	7100.00	55.25	91.27	6906.82	1384.85	-149.01	1382.27	9.00	1411651.96	3212691.84	40.460870	-104.735628
	7200.00											

Comments	MD (ft)	Incl (°)	Azim True (°)	TVD (ft)	VSEC (ft)	NS (ft)	EW (ft)	DLS (°/100ft)	Northing (ftUS)	Easting (ftUS)	Latitude (°)	Longitude (°)
Landing Point, Hold to TD	7300.00	73.24	90.78	6993.37	1564.24	-152.15	1561.63	9.00	1411650.35	3212871.21	40.460861	-104.734983
	7400.00	82.24	90.57	7014.58	1661.86	-153.30	1659.25	9.00	1411650.04	3212968.83	40.460858	-104.734632
	7487.92	90.15	90.40	7020.41	1749.51	-154.05	1746.90	9.00	1411650.04	3213056.48	40.460856	-104.734317
	7500.00	90.15	90.40	7020.38	1761.59	-154.13	1758.98	0.00	1411650.06	3213068.56	40.460856	-104.734274
	7600.00	90.15	90.40	7020.12	1861.58	-154.83	1858.98	0.00	1411650.21	3213168.56	40.460854	-104.733915
	7700.00	90.15	90.40	7019.86	1961.58	-155.54	1958.97	0.00	1411650.36	3213268.55	40.460852	-104.733555
	7800.00	90.15	90.40	7019.60	2061.57	-156.24	2058.97	0.00	1411650.52	3213368.55	40.460850	-104.733196
	7900.00	90.15	90.40	7019.34	2161.56	-156.94	2158.97	0.00	1411650.67	3213468.54	40.460848	-104.732836
	8000.00	90.15	90.40	7019.07	2261.55	-157.65	2258.96	0.00	1411650.82	3213568.54	40.460846	-104.732477
	8100.00	90.15	90.40	7018.81	2361.55	-158.35	2358.96	0.00	1411650.98	3213668.53	40.460844	-104.732118
	8200.00	90.15	90.40	7018.55	2461.54	-159.05	2458.96	0.00	1411651.13	3213768.53	40.460842	-104.731758
	8300.00	90.15	90.40	7018.29	2561.53	-159.76	2558.96	0.00	1411651.28	3213868.53	40.460840	-104.731399
	8400.00	90.15	90.40	7018.03	2661.52	-160.46	2658.95	0.00	1411651.44	3213968.52	40.460838	-104.731040
	8500.00	90.15	90.40	7017.76	2761.52	-161.16	2758.95	0.00	1411651.59	3214068.52	40.460836	-104.730680
	8600.00	90.15	90.40	7017.50	2861.51	-161.87	2858.95	0.00	1411651.74	3214168.51	40.460834	-104.730321
	8700.00	90.15	90.40	7017.24	2961.50	-162.57	2958.94	0.00	1411651.89	3214268.51	40.460832	-104.729962
	8800.00	90.15	90.40	7016.98	3061.49	-163.27	3058.94	0.00	1411652.05	3214368.50	40.460830	-104.729602
	8900.00	90.15	90.40	7016.72	3161.49	-163.98	3158.94	0.00	1411652.20	3214468.50	40.460828	-104.729243
	9000.00	90.15	90.40	7016.46	3261.48	-164.68	3258.94	0.00	1411652.35	3214568.50	40.460826	-104.728884
	9100.00	90.15	90.40	7016.19	3361.47	-165.38	3358.93	0.00	1411652.51	3214668.49	40.460824	-104.728524
	9200.00	90.15	90.40	7015.93	3461.46	-166.09	3458.93	0.00	1411652.66	3214768.49	40.460822	-104.728165
	9300.00	90.15	90.40	7015.67	3561.46	-166.79	3558.93	0.00	1411652.81	3214868.48	40.460820	-104.727806
	9400.00	90.15	90.40	7015.41	3661.45	-167.49	3658.92	0.00	1411652.97	3214968.48	40.460819	-104.727446
	9500.00	90.15	90.40	7015.15	3761.44	-168.20	3758.92	0.00	1411653.12	3215068.47	40.460817	-104.727087
	9600.00	90.15	90.40	7014.88	3861.43	-168.90	3858.92	0.00	1411653.27	3215168.47	40.460815	-104.726728
	9700.00	90.15	90.40	7014.62	3961.42	-169.60	3958.92	0.00	1411653.42	3215268.47	40.460813	-104.726368
	9800.00	90.15	90.40	7014.36	4061.42	-170.31	4058.91	0.00	1411653.58	3215368.46	40.460811	-104.726009
	9900.00	90.15	90.40	7014.10	4161.41	-171.01	4158.91	0.00	1411653.73	3215468.46	40.460809	-104.725649
10000.00	90.15	90.40	7013.84	4261.40	-171.71	4258.91	0.00	1411653.88	3215568.45	40.460807	-104.725290	
10100.00	90.15	90.40	7013.58	4361.39	-172.42	4358.91	0.00	1411654.04	3215668.45	40.460805	-104.724931	
10200.00	90.15	90.40	7013.31	4461.39	-173.12	4458.90	0.00	1411654.19	3215768.44	40.460803	-104.724571	
10300.00	90.15	90.40	7013.05	4561.38	-173.82	4558.90	0.00	1411654.34	3215868.44	40.460801	-104.724212	
10400.00	90.15	90.40	7012.79	4661.37	-174.53	4658.90	0.00	1411654.50	3215968.44	40.460799	-104.723853	
10500.00	90.15	90.40	7012.53	4761.36	-175.23	4758.89	0.00	1411654.65	3216068.43	40.460797	-104.723493	
10600.00	90.15	90.40	7012.27	4861.36	-175.93	4858.89	0.00	1411654.80	3216168.43	40.460795	-104.723134	
10700.00	90.15	90.40	7012.00	4961.35	-176.64	4958.89	0.00	1411654.95	3216268.42	40.460793	-104.722775	
10800.00	90.15	90.40	7011.74	5061.34	-177.34	5058.89	0.00	1411655.11	3216368.42	40.460791	-104.722415	
10900.00	90.15	90.40	7011.48	5161.33	-178.04	5158.88	0.00	1411655.26	3216468.41	40.460789	-104.722056	
11000.00	90.15	90.40	7011.22	5261.33	-178.75	5258.88	0.00	1411655.41	3216568.41	40.460787	-104.721697	
11100.00	90.15	90.40	7010.96	5361.32	-179.45	5358.88	0.00	1411655.57	3216668.40	40.460785	-104.721337	
11200.00	90.15	90.40	7010.70	5461.31	-180.15	5458.87	0.00	1411655.72	3216768.40	40.460783	-104.720978	
11300.00	90.15	90.40	7010.43	5561.30	-180.86	5558.87	0.00	1411655.87	3216868.40	40.460781	-104.720619	
11400.00	90.15	90.40	7010.17	5661.30	-181.56	5658.87	0.00	1411656.03	3216968.39	40.460779	-104.720259	
11500.00	90.15	90.40	7009.91	5761.29	-182.26	5758.87	0.00	1411656.18	3217068.39	40.460777	-104.719900	
11600.00	90.15	90.40	7009.65	5861.28	-182.97	5858.86	0.00	1411656.33	3217168.38	40.460775	-104.719541	
11700.00	90.15	90.40	7009.39	5961.27	-183.67	5958.86	0.00	1411656.48	3217268.38	40.460773	-104.719181	
11800.00	90.15	90.40	7009.12	6061.27	-184.37	6058.86	0.00	1411656.64	3217368.37	40.460771	-104.718822	
11900.00	90.15	90.40	7008.86	6161.26	-185.08	6158.85	0.00	1411656.79	3217468.37	40.460769	-104.718462	
12000.00	90.15	90.40	7008.60	6261.25	-185.78	6258.85	0.00	1411656.94	3217568.37	40.460767	-104.718103	
12100.00	90.15	90.40	7008.34	6361.24	-186.48	6358.85	0.00	1411657.10	3217668.36	40.460765	-104.717744	
12200.00	90.15	90.40	7008.08	6461.24	-187.19	6458.85	0.00	1411657.25	3217768.36	40.460763	-104.717384	
12300.00	90.15	90.40	7007.82	6561.23	-187.89	6558.84	0.00	1411657.40	3217868.35	40.460761	-104.717025	
12400.00	90.15	90.40	7007.55	6661.22	-188.59	6658.84	0.00	1411657.56	3217968.35	40.460759	-104.716666	
12500.00	90.15	90.40	7007.29	6761.21	-189.30	6758.84	0.00	1411657.71	3218068.34	40.460757	-104.716306	
12600.00	90.15	90.40	7007.03	6861.21	-190.00	6858.83	0.00	1411657.86	3218168.34	40.460755	-104.715947	
12700.00	90.15	90.40	7006.77	6961.20	-190.71	6958.83	0.00	1411658.01	3218268.34	40.460753	-104.715588	
12800.00	90.15	90.40	7006.51	7061.19	-191.41	7058.83	0.00	1411658.17	3218368.33	40.460751	-104.715228	
12900.00	90.15	90.40	7006.25	7161.18	-192.11	7158.83	0.00	1411658.32	3218468.33	40.460749	-104.714869	
13000.00	90.15	90.40	7005.98	7261.18	-192.82	7258.82	0.00	1411658.48	3218568.32	40.460747	-104.714510	
13100.00	90.15	90.40	7005.72	7361.17	-193.52	7358.82	0.00	1411658.63	3218668.32	40.460745	-104.714150	
13200.00	90.15	90.40	7005.46	7461.16	-194.22	7458.82	0.00	1411658.78	3218768.31	40.460743	-104.713791	
13300.00	90.15	90.40	7005.20	7561.15	-194.93	7558.82	0.00	1411658.93	3218868.31	40.460741	-104.713432	
13400.00	90.15	90.40	7004.94	7661.15	-195.63	7658.81	0.00	1411659.09	3218968.31	40.460739	-104.713072	
13500.00	90.15	90.40	7004.67	7761.14	-196.33	7758.81	0.00	1411659.24	3219068.30	40.460737	-104.712713	
13600.00	90.15	90.40	7004.41	7861.13	-197.04	7858.81	0.00	1411659.39	3219168.30	40.460735	-104.712353	
13700.00	90.15	90.40	7004.15	7961.12	-197.74	7958.80	0.00	1411659.55	3219268.29	40.460733	-104.711994	
13800.00	90.15	90.40	7003.89	8061.12	-198.44	8058.80	0.00	1411659.70	3219368.29	40.460731	-104.711635	
13900.00	90.15	90.40	7003.63	8161.11	-199.15	8158.80	0.00	1411659.85	3219468.28	40.460729	-104.711275	
14000.00	90.15	90.40	7003.37	8261.10	-199.85	8258.80	0.00	1411660.00	3219568.28	40.460727	-104.710916	
14100.00	90.15	90.40	7003.10	8361.09	-200.55	8358.79	0.00	1411660.16	3219668.28	40.460725	-104.710557	
14200.00	90.15	90.40	7002.84	8461.09	-201.26	8458.79	0.00	1411660.31	3219768.27	40.460723	-104.710197	
14300.00	90.15	90.40	7002.58	8561.08	-201.96	8558.79	0.00	1411660.46	3219868.27	40.460721	-104.709838	
14400.00	90.15	90.40	7002.32	8661.07	-202.66	8658.78	0.00	1411660.62	3219968.26	40.460719	-104.709479	
14500.00	90.15	90.40	7002.06	8761.06	-203.37	8758.78	0.00	1411660.77	3220068.26	40.460717	-104.709119	
14600.00	90.15	90.40	7001.79	8861.06	-204.07	8858.78	0.00	1411660.92	3220168.25	40.460714	-104.708760	
14700.00	90.15	90.40	7001.53	8961.05	-204.77	8958.78	0.00	1411661.08	3220268.25	40.460712	-104.708401	
14800.00	90.15	90.40	7001.27	9061.04	-205.48	9058.77	0.00	1411661.23	3220368.25	40.460710	-104.708041	
14900.00	90.15	90.40	7001.01	9161.03	-206.18	9158.77	0.00	1411661.38	3220468.24	40.460708	-104.70	

Comments	MD (ft)	Incl (°)	Azim True (°)	TVD (ft)	VSEC (ft)	NS (ft)	EW (ft)	DLS (°/100ft)	Northing (ftUS)	Easting (ftUS)	Latitude (°)	Longitude (°)
----------	------------	-------------	------------------	-------------	--------------	------------	------------	------------------	--------------------	-------------------	-----------------	------------------

Survey Type: Def Plan

Survey Error Model: ISCWSA Rev 0 \*\*\* 3-D 95.000% Confidence 2.7955 sigma  
Survey Program:

Description	Part	MD From (ft)	MD To (ft)	EOU Freq (ft)	Hole Size	Casing Diameter (in)	Expected Max Inclination (deg)	Survey Tool Type	Borehole / Survey
	1	0.000	4.000	1/100.000	13.500	9.625		NAL_MWD_IFR1-Depth Only	Original Hole / Seeley 108-12N-30C-L R0 mdv 01Aug19
	1	4.000	1800.000	1/100.000	13.500	9.625		NAL_MWD_IFR1	Original Hole / Seeley 108-12N-30C-L R0 mdv 01Aug19
	1	1800.000	17577.301	1/100.000	8.500	5.500		NAL_MWD_IFR1+MS	Original Hole / Seeley 108-12N-30C-L R0 mdv 01Aug19