



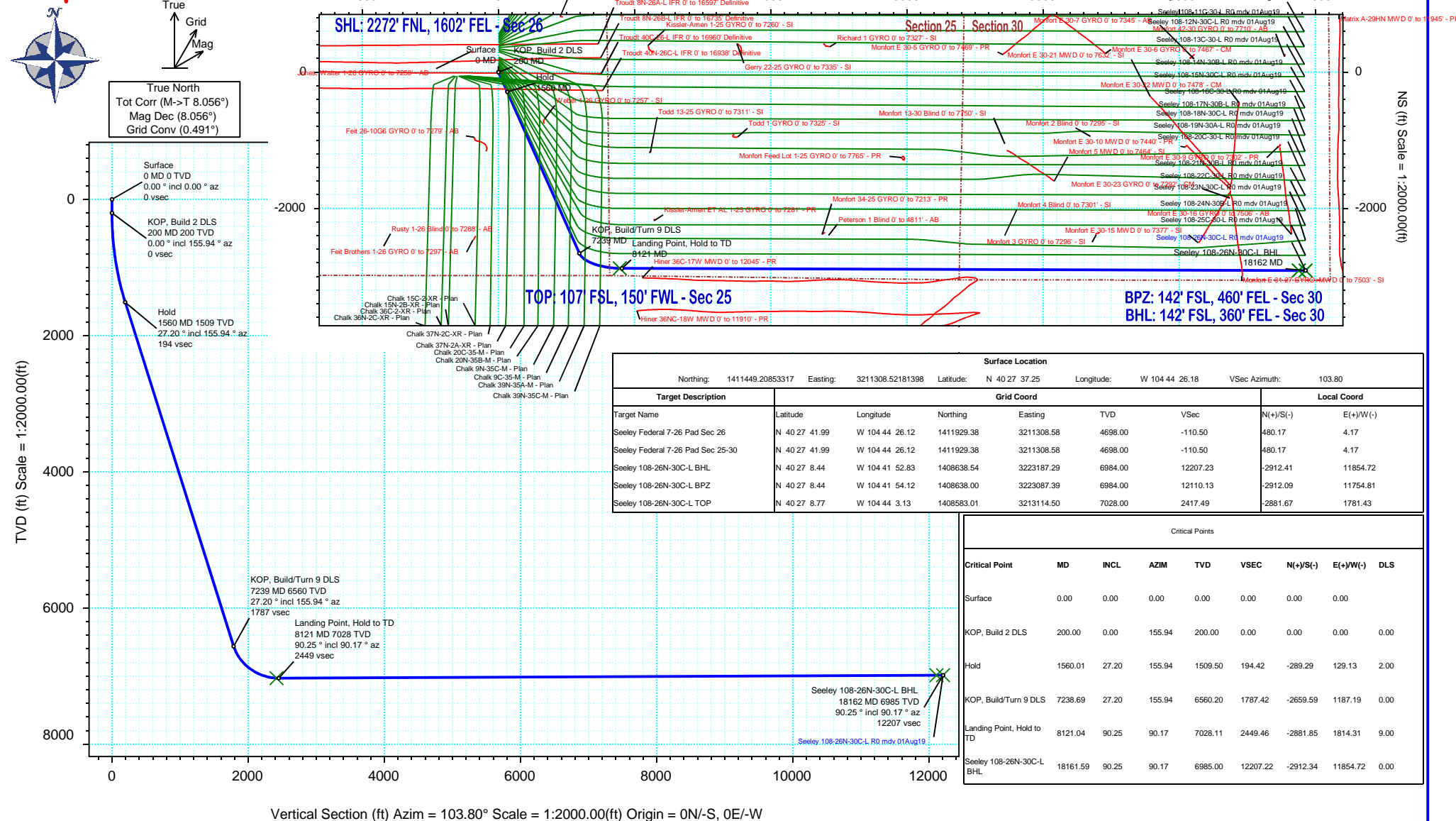
SRC Energy

Rev 0

Schlumberger

Borehole: Original Hole		Well: Seeley 108-26N-30C-L	Field: CO, Weld County (NAD 83 NZ) - SRC	Structure: SRC Energy 26-06N-66W (Chalk-Seeley Federal 7-26 Pad DSU 108)
Gravity & Magnetic Parameters Model: HDGM 2019 Dip: 66.847° Date: 31-Jul-2019 MagDec: 8.056° FS: 52216.136nT Gravity FS: 999.049mgm (9.80665 Based)		Surface Location NAD83 Colorado State Plane, Northern Zone, US Feet Lat: N 40 27 37.25 Northing: 1411449.21ftUS Grid Conv: 0.4907° Lon: W 104 44 26.18 Easting: 3211308.52ftUS Scale Fact: 0.99996352		Miscellaneous Slot: Seeley 108-26N-30C-L TVD Ref: KB 4ft(4698ft above MSL) Plan: Seeley 108-26N-30C-L R0 mdy 01Aug19

Proposal





Seeley 108-26N-30C-L R0 mdv 01Aug19 Proposal Geodetic Report

(Def Plan)

Report Date: August 27, 2019 - 11:04 AM
Client: SRC Energy
Field: CO, Weld County (NAD 83 NZ) - SRC
Structure / Slot: SRC Energy 26-06N-66W (Chalk-Seeley Federal 7-26 Pad DSU 108) / Seeley 108-26N-30C-L
Well: Seeley 108-26N-30C-L
Borehole: Original Hole
UWI / API#: Unknown / 05-123-48890
Survey Name: Seeley 108-26N-30C-L R0 mdv 01Aug19
Survey Date: July 18, 2019
Tort / AHD / DDI / ERD Ratio: 106.611 ° / 13644.933 ft / 6.575 / 1.941
Coordinate Reference System: NAD83 Colorado State Plane, Northern Zone, US Feet
Location Lat / Long: N 40° 27' 37.24560", W 104° 44' 26.17800"
Location Grid N/E Y/X: N 1411449.209 ftUS, E 3211308.522 ftUS
CRS Grid Convergence Angle: 0.4907 °
Grid Scale Factor: 0.99996352
Version / Patch: 2.10.760.0

Survey / DLS Computation: Minimum Curvature / Lubinski
Vertical Section Azimuth: 103.802 ° (True North)
Vertical Section Origin: 0.000 ft, 0.000 ft
TVD Reference Datum: KB 4ft
TVD Reference Elevation: 4698.000 ft above MSL
Seabed / Ground Elevation: 4694.000 ft above MSL
Magnetic Declination: 8.056 °
Total Gravity Field Strength: 999.0492mgn (9.80665 Based)
Gravity Model: GARM
Total Magnetic Field Strength: 52216.136 nT
Magnetic Dip Angle: 66.847 °
Declination Date: July 31, 2019
Magnetic Declination Model: HDGM 2019
North Reference: True North
Grid Convergence Used: 0.0000 °
Total Corr Mag North->True North: 8.0560 °
Local Coord Referenced To: Well Head

Comments	MD (ft)	Incl (°)	Azim True (°)	TVD (ft)	VSEC (ft)	NS (ft)	EW (ft)	DLS (°/100ft)	Northing (ftUS)	Easting (ftUS)	Latitude (°)	Longitude (°)
Surface	0.00	0.00	0.00	0.00	0.00	0.00	0.00	N/A	1411449.21	3211308.52	40.460346	-104.740605
	100.00	0.00	155.94	100.00	0.00	0.00	0.00	0.00	1411449.21	3211308.52	40.460346	-104.740605
KOP, Build 2	200.00	0.00	155.94	200.00	0.00	0.00	0.00	0.00	1411449.21	3211308.52	40.460346	-104.740605
DLS	300.00	2.00	155.94	299.98	1.07	-1.59	0.71	2.00	1411447.62	3211309.25	40.460342	-104.740602
	400.00	4.00	155.94	399.84	4.28	-6.37	2.84	2.00	1411442.86	3211311.42	40.460329	-104.740595
	500.00	6.00	155.94	499.45	9.63	-14.33	6.40	2.00	1411434.93	3211315.04	40.460307	-104.740582
	600.00	8.00	155.94	598.70	17.11	-25.46	11.36	2.00	1411423.85	3211320.10	40.460276	-104.740564
	700.00	10.00	155.94	697.47	26.71	-39.74	17.74	2.00	1411409.62	3211326.60	40.460237	-104.740541
	800.00	12.00	155.94	795.62	38.42	-57.17	25.52	2.00	1411392.27	3211334.53	40.460189	-104.740513
	900.00	14.00	155.94	893.06	52.22	-77.71	34.69	2.00	1411371.81	3211343.87	40.460133	-104.740480
	1000.00	16.00	155.94	989.64	68.11	-101.34	45.24	2.00	1411348.26	3211354.62	40.460068	-104.740442
	1100.00	18.00	155.94	1085.27	86.05	-128.04	57.15	2.00	1411321.67	3211366.77	40.459995	-104.740400
	1200.00	20.00	155.94	1179.82	106.03	-157.76	70.42	2.00	1411292.06	3211380.29	40.459913	-104.740352
	1300.00	22.00	155.94	1273.17	128.02	-190.49	85.03	2.00	1411259.46	3211395.18	40.459823	-104.740299
	1400.00	24.00	155.94	1365.21	152.00	-226.16	100.96	2.00	1411223.93	3211411.41	40.459725	-104.740242
	1500.00	26.00	155.94	1455.84	177.93	-264.75	118.18	2.00	1411185.49	3211428.96	40.459619	-104.740180
Hold	1560.01	27.20	155.94	1509.50	194.42	-289.29	129.13	2.00	1411161.05	3211440.12	40.459552	-104.740141
	1600.00	27.20	155.94	1545.07	205.64	-305.98	136.58	0.00	1411144.42	3211447.72	40.459506	-104.740114
	1700.00	27.20	155.94	1634.01	233.69	-347.72	155.22	0.00	1411102.84	3211466.70	40.459392	-104.740047
	1800.00	27.20	155.94	1722.95	261.74	-389.46	173.85	0.00	1411061.26	3211485.69	40.459277	-104.739980
	1900.00	27.20	155.94	1811.89	289.80	-431.20	192.48	0.00	1411019.69	3211504.68	40.459162	-104.739913
	2000.00	27.20	155.94	1900.83	317.85	-472.94	211.11	0.00	1410978.11	3211523.67	40.459048	-104.739846
	2100.00	27.20	155.94	1989.77	345.90	-514.68	229.75	0.00	1410936.53	3211542.66	40.458933	-104.739779
	2200.00	27.20	155.94	2078.71	373.95	-556.42	248.38	0.00	1410894.95	3211561.65	40.458819	-104.739712
	2300.00	27.20	155.94	2167.66	402.01	-598.16	267.01	0.00	1410853.38	3211580.63	40.458704	-104.739646
	2400.00	27.20	155.94	2256.60	430.06	-639.90	285.64	0.00	1410811.80	3211599.62	40.458590	-104.739579
	2500.00	27.20	155.94	2345.54	458.11	-681.64	304.27	0.00	1410770.22	3211618.61	40.458475	-104.739512
	2600.00	27.20	155.94	2434.48	486.16	-723.39	322.91	0.00	1410728.64	3211637.60	40.458360	-104.739445
	2700.00	27.20	155.94	2523.42	514.22	-765.13	341.54	0.00	1410687.07	3211656.59	40.458246	-104.739378
	2800.00	27.20	155.94	2612.36	542.27	-806.87	360.17	0.00	1410645.49	3211675.57	40.458131	-104.739311
	2900.00	27.20	155.94	2701.31	570.32	-848.61	378.80	0.00	1410603.91	3211694.56	40.458017	-104.739244
	3000.00	27.20	155.94	2790.25	598.37	-890.35	397.43	0.00	1410562.33	3211713.55	40.457902	-104.739177
	3100.00	27.20	155.94	2879.19	626.42	-932.09	416.07	0.00	1410520.75	3211732.54	40.457788	-104.739110
	3200.00	27.20	155.94	2968.13	654.48	-973.83	434.70	0.00	1410479.18	3211751.53	40.457673	-104.739043
	3300.00	27.20	155.94	3057.07	682.53	-1015.57	453.33	0.00	1410437.60	3211770.51	40.457558	-104.738976
	3400.00	27.20	155.94	3146.01	710.58	-1057.31	471.96	0.00	1410396.02	3211789.50	40.457444	-104.738909
	3500.00	27.20	155.94	3234.95	738.63	-1099.05	490.59	0.00	1410354.44	3211808.49	40.457329	-104.738842
	3600.00	27.20	155.94	3323.90	766.69	-1140.79	509.23	0.00	1410312.87	3211827.48	40.457215	-104.738775
	3700.00	27.20	155.94	3412.84	794.74	-1182.53	527.86	0.00	1410271.29	3211846.47	40.457100	-104.738708
	3800.00	27.20	155.94	3501.78	822.79	-1224.27	546.49	0.00	1410229.71	3211865.46	40.456986	-104.738641
	3900.00	27.20	155.94	3590.72	850.84	-1266.01	565.12	0.00	1410188.13	3211884.44	40.456871	-104.738574
	4000.00	27.20	155.94	3679.66	878.90	-1307.75	583.75	0.00	1410146.56	3211903.43	40.456756	-104.738507
	4100.00	27.20	155.94	3768.60	906.95	-1349.49	602.39	0.00	1410104.98	3211922.42	40.456642	-104.738440
	4200.00	27.20	155.94	3857.54	935.00	-1391.23	621.02	0.00	1410063.40	3211941.41	40.456527	-104.738373
	4300.00	27.20	155.94	3946.49	963.05	-1432.97	639.65	0.00	1410021.82	3211960.40	40.456413	-104.738306
	4400.00	27.20	155.94	4035.43	991.10	-1474.71	658.28	0.00	1409980.25	3211979.38	40.456298	-104.738240
	4500.00	27.20	155.94	4124.37	1019.16	-1516.45	676.92	0.00	1409938.67	3211998.37	40.456184	-104.738173
	4600.00	27.20	155.94	4213.31	1047.21	-1558.19	695.55	0.00	1409897.09	3212017.36	40.456069	-104.738106
	4700.00	27.20	155.94	4302.25	1075.26	-1599.93	714.18	0.00	1409855.51	3212036.35	40.455954	-104.738039
	4800.00	27.20	155.94	4391.19	1103.31	-1641.67	732.81	0.00	1409813.94	3212055.34	40.455840	-104.737972
	4900.00	27.20	155.94	4480.14	1131.37	-1683.41	751.44	0.00	1409772.36	3212074.32	40.455725	-104.737905
	5000.00	27.20	155.94	4569.08	1159.42	-1725.15	770.08	0.00	1409730.78	3212093.31	40.455611	-104.737838
	5100.00	27.20	155.94	4658.02	1187.47	-1766.89	788.71	0.00	1409689.20	3212112.30	40.455496	-104.737771
	5200.00	27.20	155.94	4746.96	1215.52	-1808.63	807.34	0.00	1409647.62	3212131.29	40.455381	-104.737704
	5300.00	27.20	155.94	4835.90	1243.57	-1850.37	825.97	0.00	1409606.05	3212150.28	40.455267	-104.737637
	5400.00	27.20	155.94	4924.84	1271.63	-1892.11	844.60	0.00	1409564.47	3212169.27	40.455152	-104.737570
	5500.00	27.20	155.94	5013.78	1299.68	-1933.85	863.24	0.00	1409522.89	3212188.25	40.455038	-104.737503
	5600.00	27.20	155.94	5102.73	1327.73	-1975.59	881.87	0.00	1409481.31	3212207.24	40.454923	-104.737436
	5700.00	27.20	155.94	5191.67	1355.78	-2017.33	900.50	0.00	1409439.74	3212226.23	40.454809	-104.737369
	5800.00	27.20	155.94	5280.61	1383.84	-2059.08	919.13	0.00	1409398.16	3212245.22	40.454694	-104.737302
	5900.00	27.20	155.94	5369.55	1411.89	-2100.82	937.76	0.00	1409356.58	3212264.21	40.454579	-104.737235
	6000.00	27.20	155.94	5458.49	1439.94	-2142.56	956.40	0.00	1409315.00	3212283.19	40.454465	-104.737168
	6100.00	27.20	155.94	5547.43	1467.99	-2184.30	975.03	0.00	1409273.43	3212302.18	40.454350	-104.737101
	6200.00	27.20	155.94	5636.38	1496.05	-2226.04	993.66	0.00	1409231.85	3212321.17	40.454236	-104.737035
	6300.00	27.20	155.94	5725.32	1524.10	-2267.78	1012.29	0.00	1409190.27	3212340.16	40.454121	-104.736968
	6400.00	27.20	155.94	5814.26	1552.15	-2309.52	1030.93	0.00	1409148.69	3212359.15	40.454007	-104.736901
	6500.00	27.20	155.94	5903.20	1580.20	-2351.26	1049.56	0.00	1409107.12	3212378.13	40.453892	-104.736834
	6600.00	27.20	155.94	5992.14	1608.25	-2393.00	1068.19	0.00	1409065.54	3212397.12	40.453777	-104.736767
	6700.00	27.20	155.94	6081.08	1636.31	-2434.74	1086.82	0.00	1409023.96	3212416.11	40.453663	-104.736700
	6800.00	27.20	155.94	6170.02	1664.36	-2476.48	1105.45	0.00	1408982.38	3212435.10	40.453548	-104.736633
	6900.00	27.20	155.94	6258.97	1692.41	-2518.22	1124.09	0.00	1408940.81	3212454.09	40.453434	-104.736566
	7000.00	27.20	155.94	6347.91	1720.46	-2559.96	1142.72	0.00	1408899.23	3212473.08	40.453319	-104.736499
	7100.00	27.20	155.94	6436.85	1748.52	-2601.70	1161.35	0.00	1408857.65	3212492.06	40.453205	-104.736432
	7200.00											

Comments	MD (ft)	Incl (°)	Azim True (°)	TVD (ft)	VSEC (ft)	NS (ft)	EW (ft)	DLS (°/100ft)	Northing (ftUS)	Easting (ftUS)	Latitude (°)	Longitude (°)
	7300.00	29.67	145.56	6614.14	1807.36	-2684.92	1201.49	9.00	1408774.78	3212532.92	40.452976	-104.736288
	7400.00	35.09	132.08	6698.67	1851.22	-2724.68	1236.90	9.00	1408735.33	3212568.66	40.452867	-104.736161
	7500.00	41.63	122.08	6777.12	1908.19	-2761.66	1286.47	9.00	1408698.77	3212618.55	40.452766	-104.735982
	7600.00	48.83	114.46	6847.55	1976.86	-2794.95	1349.01	9.00	1408666.02	3212681.36	40.452674	-104.735758
	7700.00	56.44	108.39	6908.23	2055.55	-2823.74	1422.96	9.00	1408637.87	3212755.56	40.452595	-104.735492
	7800.00	64.29	103.32	6957.66	2142.30	-2847.31	1506.51	9.00	1408615.01	3212839.30	40.452530	-104.735192
	7900.00	72.29	98.89	6994.64	2235.00	-2865.08	1597.60	9.00	1408598.02	3212930.53	40.452482	-104.734865
	8000.00	80.39	94.84	7018.24	2331.35	-2876.62	1693.98	9.00	1408587.31	3213027.00	40.452450	-104.734518
	8100.00	88.53	90.98	7027.88	2428.98	-2881.64	1793.28	9.00	1408583.14	3213126.34	40.452436	-104.734161
Landing Point, Hold to TD	8121.04	90.25	90.17	7028.11	2449.46	-2881.85	1814.31	9.00	1408583.11	3213147.38	40.452436	-104.734086
	8200.00	90.25	90.17	7027.77	2526.20	-2882.09	1893.28	0.00	1408583.55	3213226.34	40.452435	-104.733802
	8300.00	90.25	90.17	7027.34	2623.38	-2882.39	1993.27	0.00	1408584.10	3213326.33	40.452434	-104.733443
	8400.00	90.25	90.17	7026.91	2720.57	-2882.70	2093.27	0.00	1408584.66	3213426.32	40.452433	-104.733084
	8500.00	90.25	90.17	7026.48	2817.75	-2883.00	2193.27	0.00	1408585.21	3213526.32	40.452432	-104.732724
	8600.00	90.25	90.17	7026.05	2914.93	-2883.30	2293.27	0.00	1408585.76	3213626.31	40.452431	-104.732365
	8700.00	90.25	90.17	7025.62	3012.12	-2883.61	2393.27	0.00	1408586.31	3213726.30	40.452431	-104.732006
	8800.00	90.25	90.17	7025.19	3109.30	-2883.91	2493.27	0.00	1408586.87	3213826.30	40.452430	-104.731646
	8900.00	90.25	90.17	7024.76	3206.48	-2884.21	2593.27	0.00	1408587.42	3213926.29	40.452429	-104.731287
	9000.00	90.25	90.17	7024.34	3303.67	-2884.52	2693.26	0.00	1408587.97	3214026.29	40.452428	-104.730928
	9100.00	90.25	90.17	7023.91	3400.85	-2884.82	2793.26	0.00	1408588.52	3214126.28	40.452427	-104.730568
	9200.00	90.25	90.17	7023.48	3498.04	-2885.13	2893.26	0.00	1408589.08	3214226.27	40.452426	-104.730209
	9300.00	90.25	90.17	7023.05	3595.22	-2885.43	2993.26	0.00	1408589.63	3214326.27	40.452425	-104.729850
	9400.00	90.25	90.17	7022.62	3692.40	-2885.73	3093.26	0.00	1408590.18	3214426.26	40.452424	-104.729490
	9500.00	90.25	90.17	7022.19	3789.59	-2886.04	3193.26	0.00	1408590.73	3214526.25	40.452424	-104.729131
	9600.00	90.25	90.17	7021.76	3886.77	-2886.34	3293.26	0.00	1408591.29	3214626.25	40.452423	-104.728772
	9700.00	90.25	90.17	7021.33	3983.95	-2886.64	3393.25	0.00	1408591.84	3214726.24	40.452422	-104.728412
	9800.00	90.25	90.17	7020.90	4081.14	-2886.95	3493.25	0.00	1408592.39	3214826.23	40.452421	-104.728053
	9900.00	90.25	90.17	7020.47	4178.32	-2887.25	3593.25	0.00	1408592.95	3214926.23	40.452420	-104.727694
	10000.00	90.25	90.17	7020.04	4275.50	-2887.55	3693.25	0.00	1408593.50	3215026.22	40.452419	-104.727335
	10100.00	90.25	90.17	7019.61	4372.69	-2887.86	3793.25	0.00	1408594.05	3215126.22	40.452418	-104.726975
	10200.00	90.25	90.17	7019.18	4469.87	-2888.16	3893.25	0.00	1408594.60	3215226.21	40.452418	-104.726616
	10300.00	90.25	90.17	7018.75	4567.05	-2888.47	3993.25	0.00	1408595.16	3215326.20	40.452417	-104.726257
	10400.00	90.25	90.17	7018.32	4664.24	-2888.77	4093.25	0.00	1408595.71	3215426.20	40.452416	-104.725897
	10500.00	90.25	90.17	7017.89	4761.42	-2889.07	4193.24	0.00	1408596.26	3215526.19	40.452415	-104.725538
	10600.00	90.25	90.17	7017.47	4858.60	-2889.38	4293.24	0.00	1408596.81	3215626.18	40.452414	-104.725179
	10700.00	90.25	90.17	7017.04	4955.79	-2889.68	4393.24	0.00	1408597.37	3215726.18	40.452413	-104.724819
	10800.00	90.25	90.17	7016.61	5052.97	-2889.98	4493.24	0.00	1408597.92	3215826.17	40.452412	-104.724460
	10900.00	90.25	90.17	7016.18	5150.16	-2890.29	4593.24	0.00	1408598.47	3215926.17	40.452411	-104.724101
	11000.00	90.25	90.17	7015.75	5247.34	-2890.59	4693.24	0.00	1408599.02	3216026.16	40.452410	-104.723741
	11100.00	90.25	90.17	7015.32	5344.52	-2890.90	4793.24	0.00	1408599.58	3216126.15	40.452410	-104.723382
	11200.00	90.25	90.17	7014.89	5441.71	-2891.20	4893.23	0.00	1408600.13	3216226.15	40.452409	-104.723023
	11300.00	90.25	90.17	7014.46	5538.89	-2891.50	4993.23	0.00	1408600.68	3216326.14	40.452408	-104.722664
	11400.00	90.25	90.17	7014.03	5636.07	-2891.81	5093.23	0.00	1408601.23	3216426.13	40.452407	-104.722304
	11500.00	90.25	90.17	7013.60	5733.26	-2892.11	5193.23	0.00	1408601.79	3216526.13	40.452406	-104.721945
	11600.00	90.25	90.17	7013.17	5830.44	-2892.41	5293.23	0.00	1408602.34	3216626.12	40.452405	-104.721586
	11700.00	90.25	90.17	7012.74	5927.62	-2892.72	5393.23	0.00	1408602.89	3216726.12	40.452404	-104.721226
	11800.00	90.25	90.17	7012.31	6024.81	-2893.02	5493.23	0.00	1408603.45	3216826.11	40.452403	-104.720867
	11900.00	90.25	90.17	7011.88	6121.99	-2893.32	5593.22	0.00	1408604.00	3216926.10	40.452402	-104.720508
	12000.00	90.25	90.17	7011.45	6219.17	-2893.63	5693.22	0.00	1408604.55	3217026.10	40.452402	-104.720148
	12100.00	90.25	90.17	7011.03	6316.36	-2893.93	5793.22	0.00	1408605.10	3217126.09	40.452401	-104.719789
	12200.00	90.25	90.17	7010.60	6413.54	-2894.24	5893.22	0.00	1408605.66	3217226.08	40.452400	-104.719430
	12300.00	90.25	90.17	7010.17	6510.72	-2894.54	5993.22	0.00	1408606.21	3217326.08	40.452399	-104.719070
	12400.00	90.25	90.17	7009.74	6607.91	-2894.84	6093.22	0.00	1408606.76	3217426.07	40.452398	-104.718711
	12500.00	90.25	90.17	7009.31	6705.09	-2895.15	6193.22	0.00	1408607.31	3217526.06	40.452397	-104.718352
	12600.00	90.25	90.17	7008.88	6802.27	-2895.45	6293.21	0.00	1408607.87	3217626.06	40.452396	-104.717992
	12700.00	90.25	90.17	7008.45	6899.46	-2895.75	6393.21	0.00	1408608.42	3217726.05	40.452395	-104.717633
	12800.00	90.25	90.17	7008.02	6996.64	-2896.06	6493.21	0.00	1408608.97	3217826.05	40.452394	-104.717274
	12900.00	90.25	90.17	7007.59	7093.83	-2896.36	6593.21	0.00	1408609.52	3217926.04	40.452393	-104.716914
	13000.00	90.25	90.17	7007.16	7191.01	-2896.67	6693.21	0.00	1408610.08	3218026.03	40.452393	-104.716555
	13100.00	90.25	90.17	7006.73	7288.19	-2896.97	6793.21	0.00	1408610.63	3218126.03	40.452392	-104.716196
	13200.00	90.25	90.17	7006.30	7385.38	-2897.27	6893.21	0.00	1408611.18	3218226.02	40.452391	-104.715837
	13300.00	90.25	90.17	7005.87	7482.56	-2897.58	6993.21	0.00	1408611.74	3218326.01	40.452390	-104.715477
	13400.00	90.25	90.17	7005.44	7579.74	-2897.88	7093.20	0.00	1408612.29	3218426.01	40.452389	-104.715118
	13500.00	90.25	90.17	7005.01	7676.93	-2898.18	7193.20	0.00	1408612.84	3218526.00	40.452388	-104.714759
	13600.00	90.25	90.17	7004.59	7774.11	-2898.49	7293.20	0.00	1408613.39	3218626.00	40.452387	-104.714399
	13700.00	90.25	90.17	7004.16	7871.29	-2898.79	7393.20	0.00	1408613.95	3218725.99	40.452386	-104.714040
	13800.00	90.25	90.17	7003.73	7968.48	-2899.09	7493.20	0.00	1408614.50	3218825.98	40.452385	-104.713681
	13900.00	90.25	90.17	7003.30	8065.66	-2899.40	7593.20	0.00	1408615.05	3218925.98	40.452384	-104.713321
	14000.00	90.25	90.17	7002.87	8162.84	-2899.70	7693.20	0.00	1408615.60	3219025.97	40.452383	-104.712962
	14100.00	90.25	90.17	7002.44	8260.03	-2900.01	7793.19	0.00	1408616.16	3219125.96	40.452382	-104.712603
	14200.00	90.25	90.17	7002.01	8357.21	-2900.31	7893.19	0.00	1408616.71	3219225.96	40.452382	-104.712243
	14300.00	90.25	90.17	7001.58	8454.39	-2900.61	7993.19	0.00	1408617.26	3219325.95	40.452381	-104.711884
	14400.00	90.25	90.17	7001.15	8551.58	-2900.92	8093.19	0.00	1408617.81	3219425.94	40.452380	-104.711525
	14500.00	90.25	90.17	7000.72	8648.76	-2901.22	8193.19	0.00	1408618.37	3219525.94	40.452379	-104.711165
	14600.00	90.25	90.17	7000.29	8745.94	-2901.52	8293.19	0.00	1408618.92	3219625.93	40.452378	-104.710806
	14700.00	90.25	90.17	6999.86	8843.13	-2901.83	8393.19	0.00	1408619.47	3219725.93	40.452377	-104.710447
	14800.00	90.25	90.17	6999.43	8940.31	-2902.13	8493.18	0.00	1408620.03	3219825.92	40.452376	-104.710088
	14900.00	90.25	90.17	6999.00	9037.50							

Comments	MD (ft)	Incl (°)	Azim True (°)	TVD (ft)	VSEC (ft)	NS (ft)	EW (ft)	DLS (°/100ft)	Northing (ftUS)	Easting (ftUS)	Latitude (°)	Longitude (°)
	18000.00	90.25	90.17	6985.69	12050.18	-2911.85	11693.14	0.00	1408637.71	3223025.72	40.452346	-104.698590
	18100.00	90.25	90.17	6985.26	12147.37	-2912.15	11793.14	0.00	1408638.26	3223125.71	40.452345	-104.698230
Seeley 108-26N-30C-L BHL	18161.59	90.25	90.17	6985.00	12207.22	-2912.34	11854.72	0.00	1408638.60	3223187.29	40.452344	-104.698009

Survey Type: Def Plan

Survey Error Model: ISCWSA Rev 0 *** 3-D 95.000% Confidence 2.7955 sigma
Survey Program:

Description	Part	MD From (ft)	MD To (ft)	EOU Freq (ft)	Hole Size	Casing Diameter (in)	Expected Max Inclination (deg)	Survey Tool Type	Borehole / Survey
	1	0.000	4.000	1/100.000	13.500	9.625		NAL_MWD_IFR1-Depth Only	Original Hole / Seeley 108-26N-30C-L R0 mdv 01Aug19
	1	4.000	1800.000	1/100.000	13.500	9.625		NAL_MWD_IFR1	Original Hole / Seeley 108-26N-30C-L R0 mdv 01Aug19
	1	1800.000	18161.585	1/100.000	8.500	5.500		NAL_MWD_IFR1+MS	Original Hole / Seeley 108-26N-30C-L R0 mdv 01Aug19