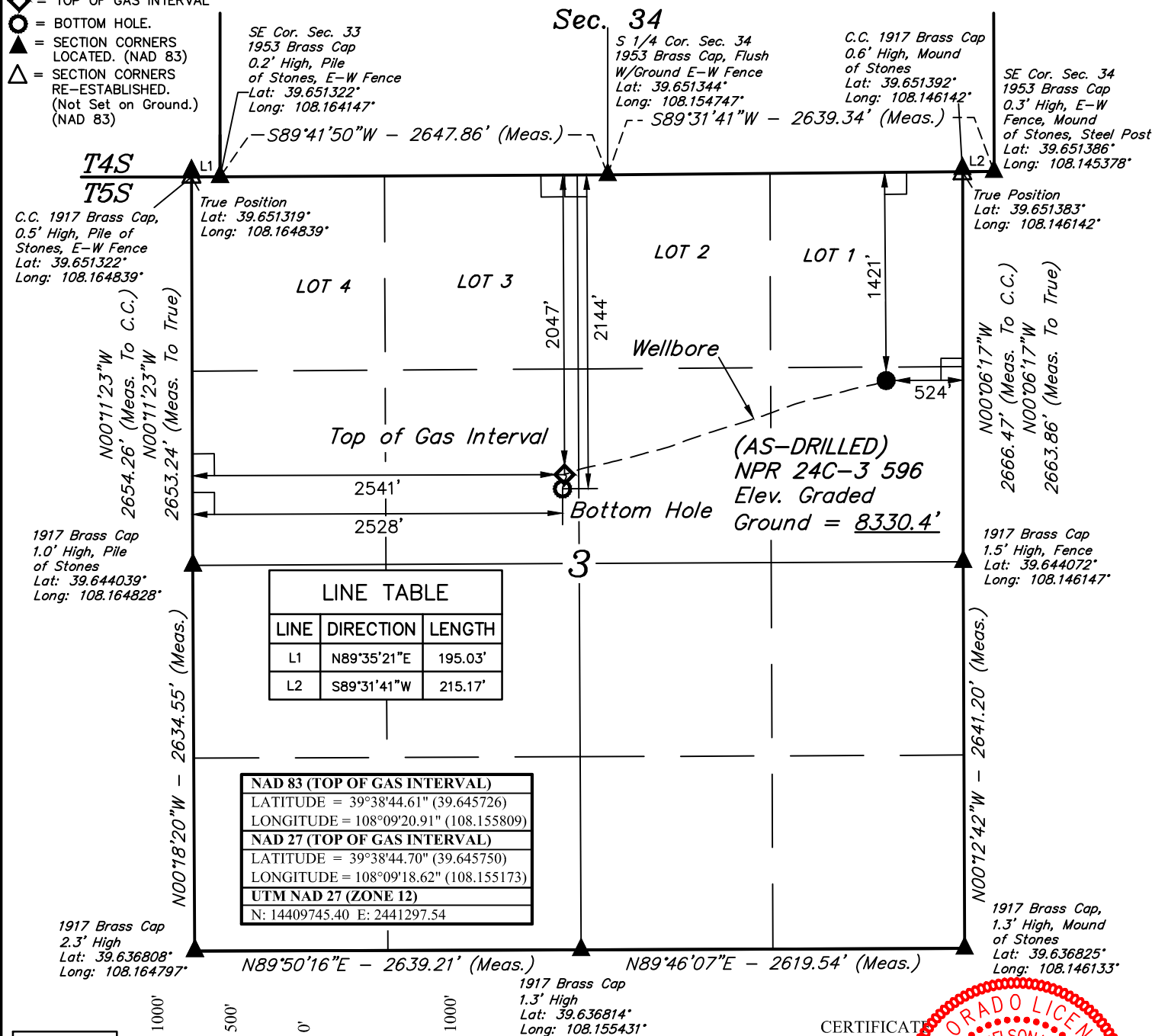


LEGEND:

- = 90° SYMBOL
- = AS-DRILLED WELLHEAD.
- ◆ = TOP OF GAS INTERVAL
- = BOTTOM HOLE.
- ▲ = SECTION CORNERS LOCATED. (NAD 83)
- △ = SECTION CORNERS RE-ESTABLISHED. (Not Set on Ground.) (NAD 83)

T5S, R96W, 6th P.M.



CERTIFICATE

THIS IS TO CERTIFY THAT THE ABOVE PLAT WAS PREPARED AND THE LOCATION AS SHOWN WAS STAKED ON THE GROUND FROM FIELD NOTES OF ACTUAL SURVEYS MADE BY ME OR UNDER MY SUPERVISION AND THAT THE SAME ARE TRUE AND CORRECT TO THE BEST OF MY KNOWLEDGE AND BELIEF.

REGISTERED LAND SURVEYOR
REGISTRATION NO. 19980
STATE OF COLORADO

BASIS OF BEARINGS

BASIS OF BEARINGS IS A G.P.S. OBSERVATION

BASIS OF ELEVATION

BENCH MARK (H79) LOCATED IN THE NE 1/4 OF SECTION 35, T4S, R98W, 6th P.M., TAKEN FROM THE BULL FORK, QUADRANGLE, COLORADO, 7.5 MINUTE SERIES (TOPOGRAPHIC MAP) PUBLISHED BY THE UNITED STATES DEPARTMENT OF THE INTERIOR, GEOLOGICAL SURVEY. SAID ELEVATION IS MARKED AS BEING 8535 FEET.

UELS, LLC

Corporate Office * 85 South 200 East
Vernal, UT 84078 * (435) 789-1017

Caerus Oil & Gas LLC

(AS-DRILLED) NPR 24C-3 596
SE 1/4 NE 1/4, SECTION 3, T5S, R96W, 6th P.M.
GARFIELD COUNTY, COLORADO

SURVEYED BY	JOEL LEFEVERE, D.P.	04-16-19	SCALE
DRAWN BY	M.D.	04-23-19	1" = 1000'

AS-DRILLED WELL LOCATION PLAT