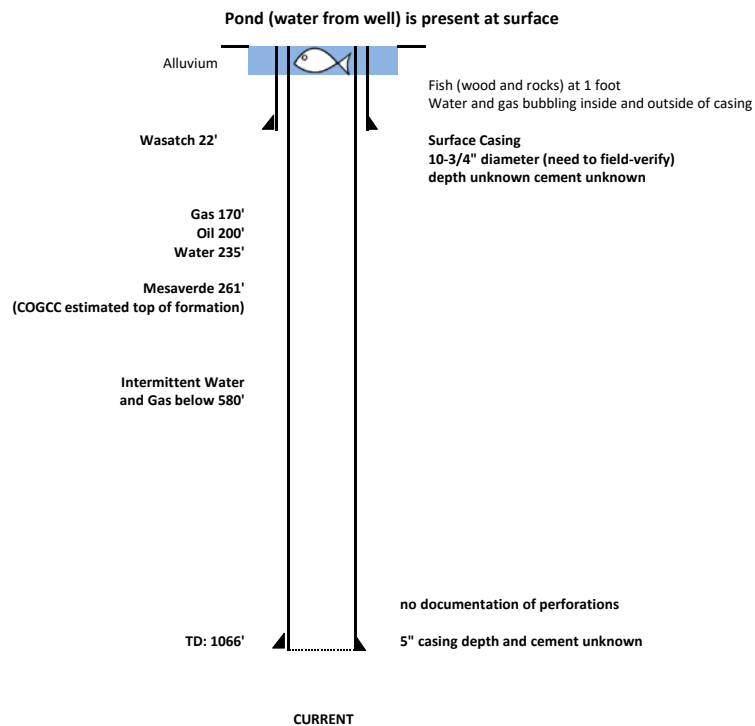


API No. 077-05147

DEBEQUE #1
 SESW 21 8S 97W 6th PM
 Mesa County, CO

Well was drilled in 1902
 Best-available information provided below from "Contributions to Economic Geology" (U.S. Geological Survey, 1911)



not to scale

assumes 10" hole with 2.2 sacks per foot of fill

